

# V&V Reference Report

## L2 ASCDS Version : 8.4.4

Observation 7760 - L2 Version 3  
Chandra X-Ray Center

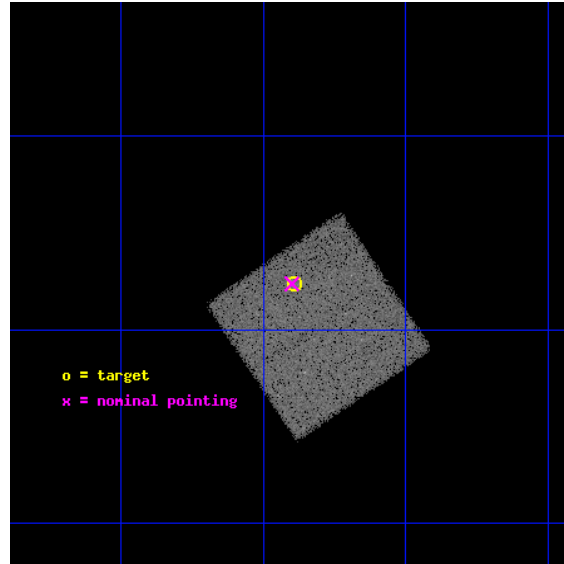
L2 Processing Date : Apr 19 2012

## Contents

<b>1</b>	<b>Front</b>	<b>2</b>
<b>2</b>	<b>OBI</b>	<b>3</b>
2.1	OBI . . . . .	3
2.1.1	Images . . . . .	3
2.1.2	Bias . . . . .	3
2.1.3	Parameters . . . . .	4
2.1.4	Events . . . . .	4
2.2	Compared Parameters . . . . .	5
2.3	Aspect . . . . .	6
2.4	Star Slots . . . . .	9
2.4.1	Slot 3 . . . . .	9
2.4.2	Slot 4 . . . . .	10
2.4.3	Slot 5 . . . . .	11
2.4.4	Slot 6 . . . . .	12
2.4.5	Slot 7 . . . . .	13
2.5	FID Slots . . . . .	14
2.5.1	Slot 0 . . . . .	14
2.5.2	Slot 1 . . . . .	15
2.5.3	Slot 2 . . . . .	16
<b>A</b>	<b>Summary</b>	<b>17</b>
A.1	Status . . . . .	17
A.2	Comments . . . . .	17

# 1 Front

seq_num	701428	Sequence number
obs_id	7760	Observation id
title	Flux ratio anomalies in gravitationally lensed quasars with four images: Chandra observations of 4 new systems.	Proposal title
observer	Dr. Paul Schechter	Principal investigator
object	HE1113-0641	Source name
dtcycle	0	&#160
cycle	P	events from which exps? Prim/Second/Both
ra_targ	169.097917	Observer's specified target RA [deg]
dec_targ	-6.960833	Observer's specified target Dec [deg]
ra_nom	169.10002547364	Nominal RA [deg]
dec_nom	-6.9606215247548	Nominal Dec [deg]
roll_nom	55.958490209903	Nominal Roll [deg]
revision	3	Processing version of data
ontime	15177.0	Sum of GTIs [s]
livetime	14972.180569805	Livetime [s]
ontime7	15177.0	Sum of GTIs [s]
l2events	49938	Number of level 2 events

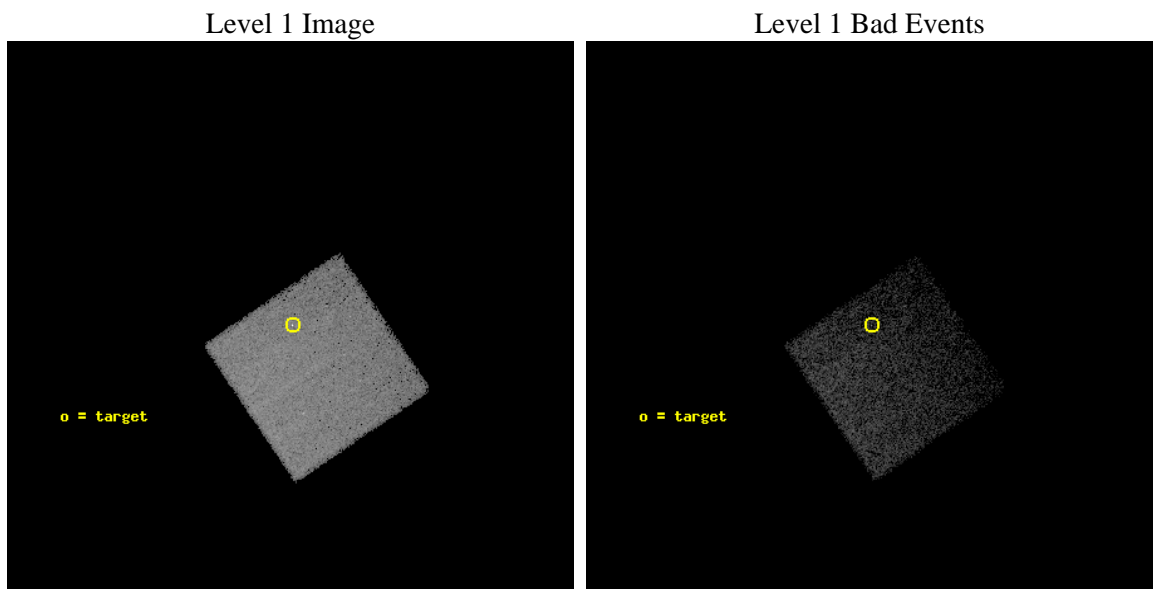




## 2 OBI

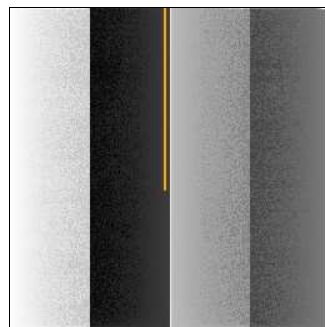
### 2.1 OBI

#### 2.1.1 Images



#### 2.1.2 Bias

Chip 7



### 2.1.3 Parameters

obi_num	0	Obi number	sched_exp_time	15000.000000	[s] Scheduled observation exposure time
ascdsver	8.4.4	Processing system revision	ontime	15177.0	Sum of GTIs [s]
caldsver	4.4.9	&#160	ontime7	15177.0	Sum of GTIs [s]
date	2012-04-19T02:43:15	Date and time of file creation	l1events	102984	Number of level 1 events
revision	3	Processing version of data			

### 2.1.4 Events

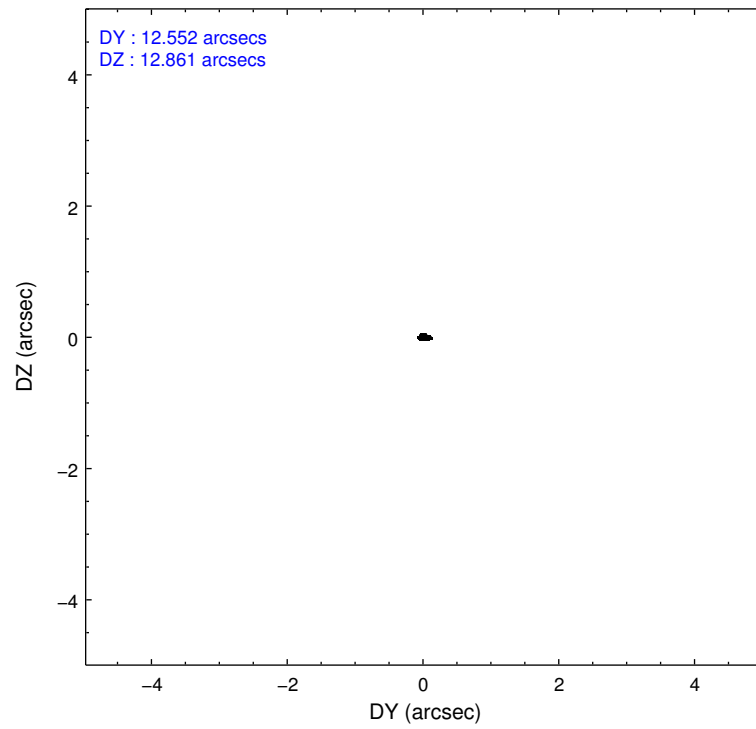
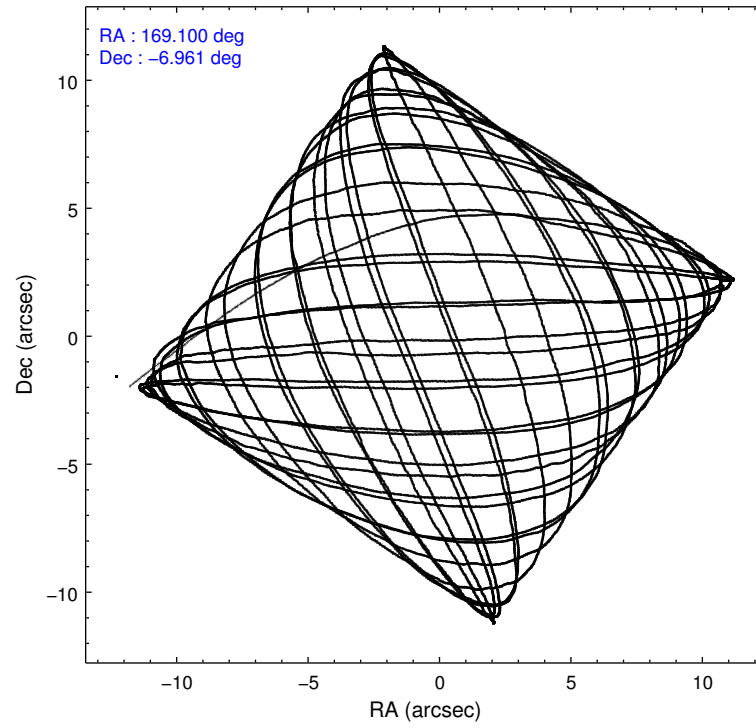
	<b>ccd 7</b>
level 1 events	102984
rejected events	51496
rejected %	50%

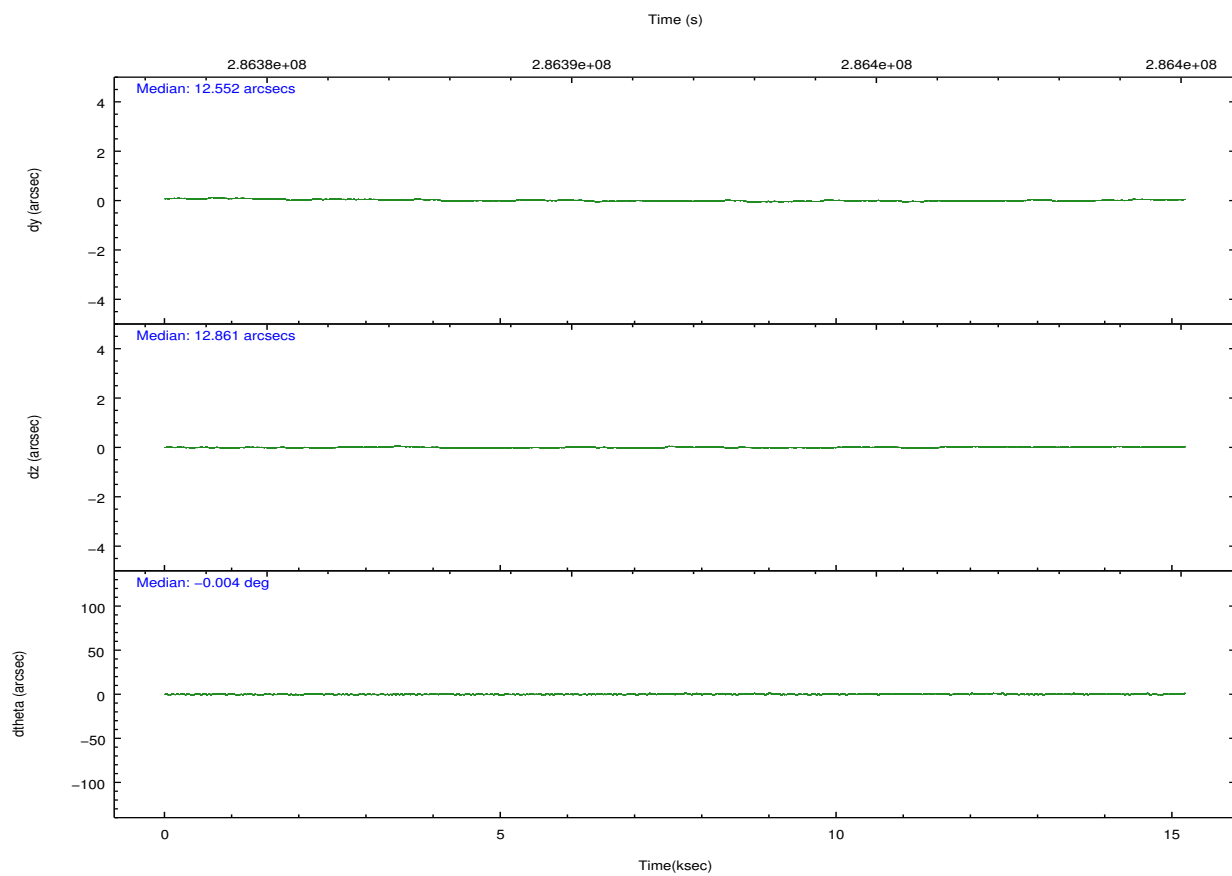
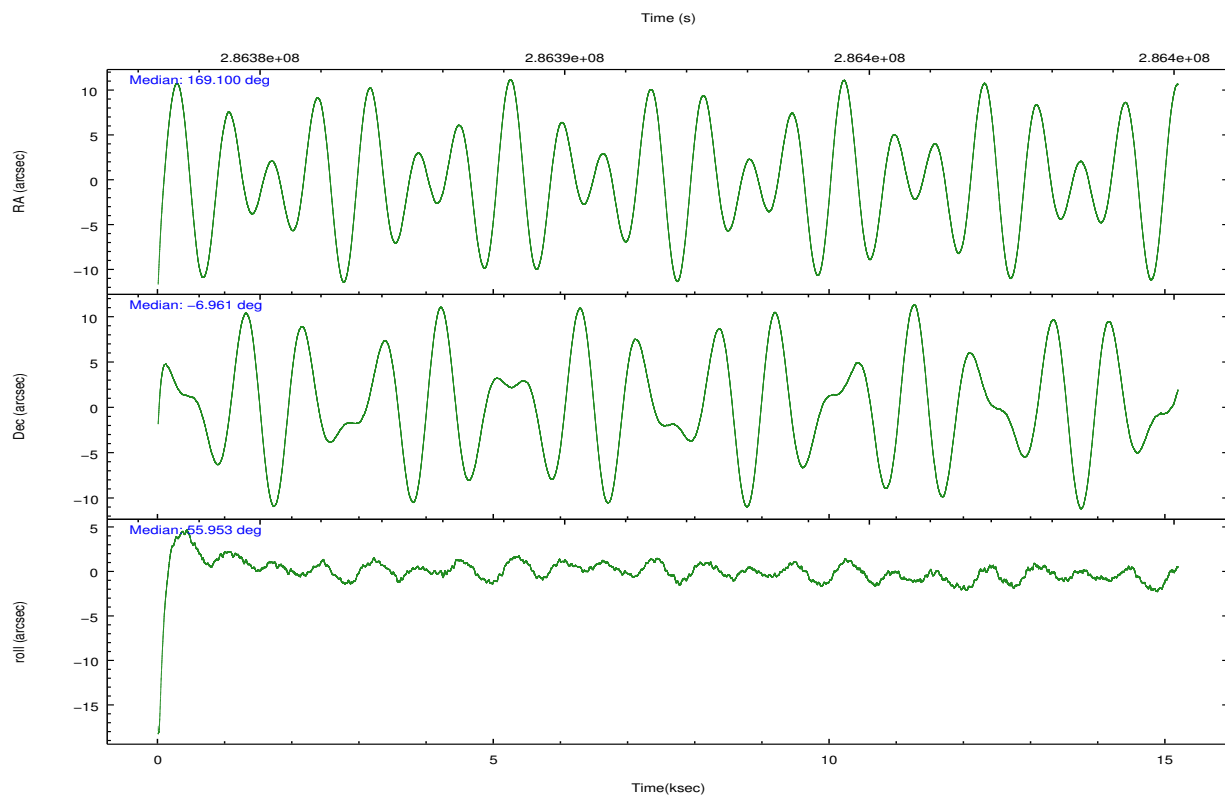
	<b>ccd 7</b>
grade 0 events	5761
	5%
grade 1 events	142
	0%
grade 2 events	11145
	10%
grade 3 events	5044
	4%
grade 4 events	5112
	4%
grade 5 events	11243
	10%
grade 6 events	25431
	24%
grade 7 events	39106
	37%

## 2.2 Compared Parameters

Parameter	Planned	Actual	Parameter	Planned	Actual
Instrument	ACIS	ACIS	Obspar format version number	7	7
Detector	ACIS-7	ACIS-7	Obspar file type	PREDICTED	ACTUAL
Grating	NONE	NONE	Obspar update status	NONE	UPDATED
Data mode	VFAINT	VFAINT	Number of optional ACIS chips dropped	0	0
Observation mode	POINTING	POINTING	On-chip summing requested	N	N
[deg] Pointing RA	169.098454	169.1000254736446	Subarray requested	NONE	NONE
[deg] Pointing Dec	-6.987926	-6.960621524754803	Alternating exposures requested	N	N
[deg] Pointing Roll	55.801686	55.95849020990264	[s] Primary exposure time	0.000000	3
[mm] SIM focus pos	-0.684267	-0.6828225247311905			
[mm] SIM defocus	0	0.001444936568705701			
[mm] SIM translation stage pos	-190.132523	-190.1400660498719			
[mm] SIM translation stage offset	0	0.00754346686406393			
[s] Observation start time (MET)	286384290.184000	286383418.21819			
Observation start date	2007-01-28T15:10:25	2007-01-28T14:56:58			
[s] Observation end time (MET)	286399290.184000	286400206.69398			
Observation end date	2007-01-28T19:20:25	2007-01-28T19:36:46			
Read mode	TIMED	TIMED			

## 2.3 Aspect



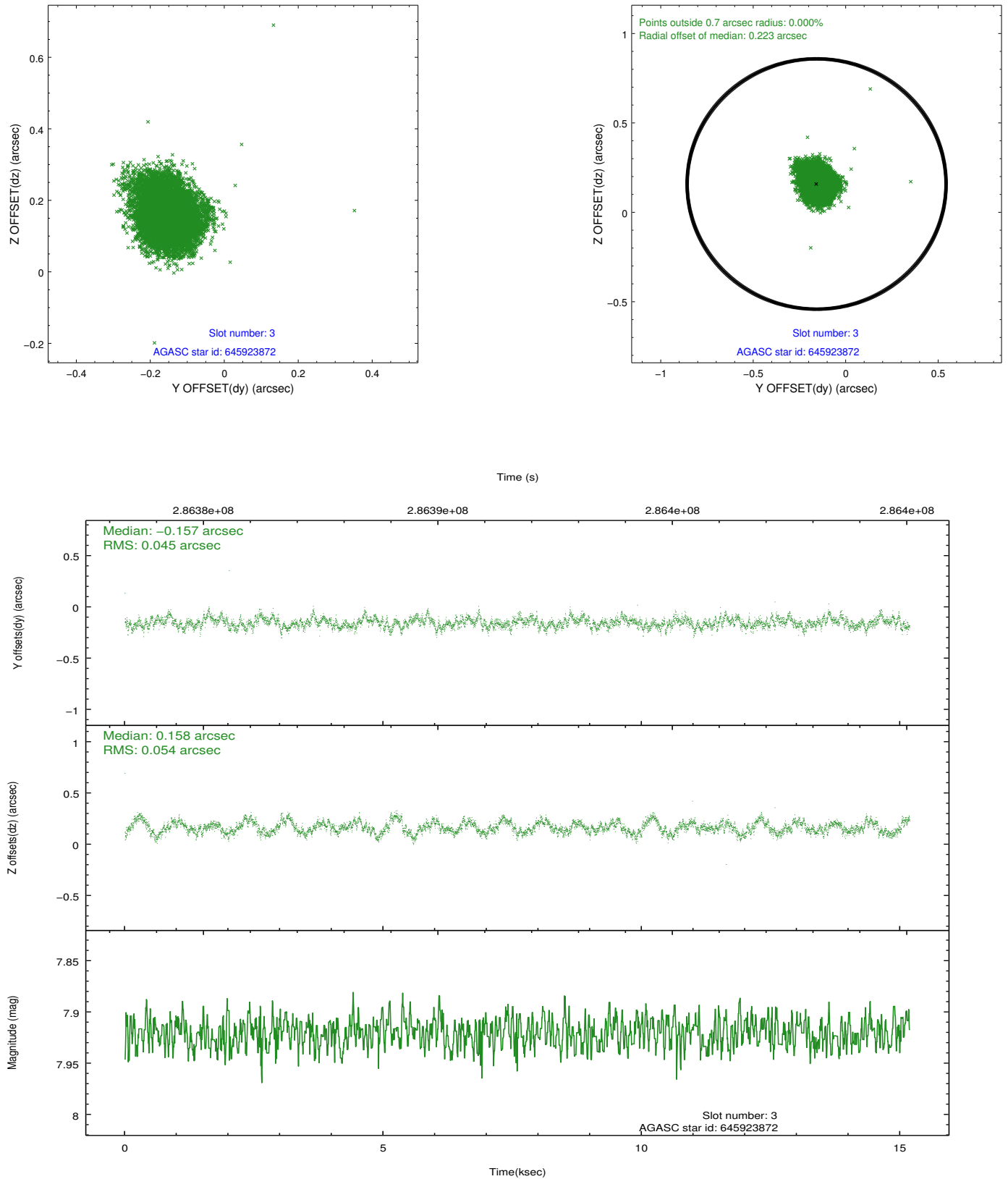


### Slot Statistics

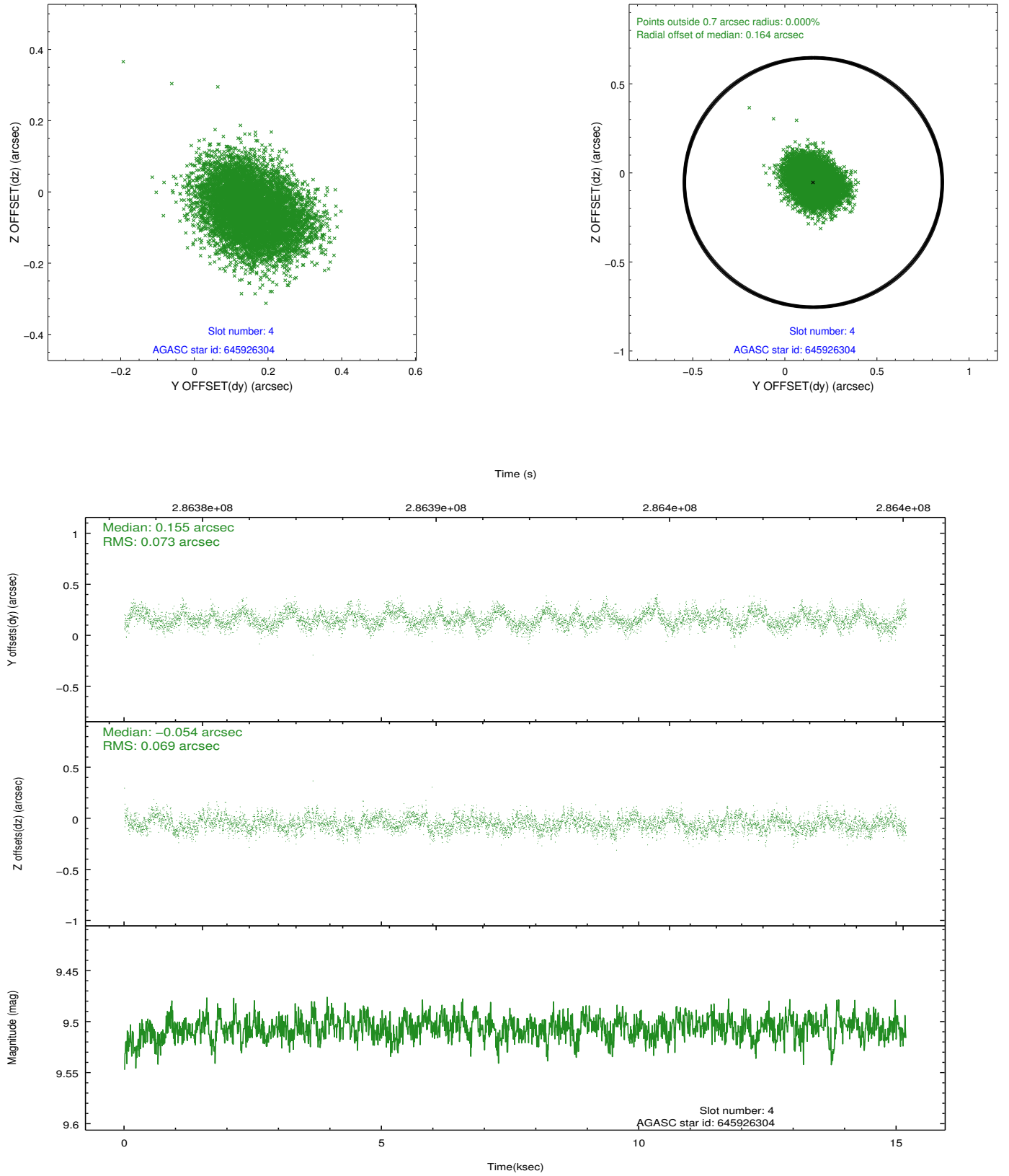
slot	status	id	mag	n_pts	med_dy	med_dz	dr1	dr2	ra	dec	mean_y	mean_z
0	FID	ACIS-S-2	7.10	3704	-0.020	-0.065	0.006	0.011	0.000000	0.000000	-765.49	-1734.24
1	FID	ACIS-S-4	7.20	3704	0.148	0.027	0.006	0.011	0.000000	0.000000	2147.83	174.01
2	FID	ACIS-S-5	7.23	3704	-0.159	0.047	0.006	0.011	0.000000	0.000000	-1818.08	168.06
3	GUIDE	645923872	7.92	7407	-0.157	0.158	0.075	0.118	169.683008	-6.910198	1404.31	-1570.42
4	GUIDE	645926304	9.51	7396	0.155	-0.054	0.107	0.171	168.835783	-7.017778	-617.07	716.07
5	GUIDE	645927568	9.76	7388	0.044	-0.123	0.130	0.206	168.822230	-7.208558	-1211.51	369.42
6	GUIDE	645927600	9.37	7400	0.028	0.070	0.089	0.146	169.015619	-7.486142	-1649.49	-763.43
7	GUIDE	645932048	9.15	7403	-0.071	-0.054	0.083	0.134	168.900798	-6.152997	2087.79	2275.04

## 2.4 Star Slots

### 2.4.1 Slot 3

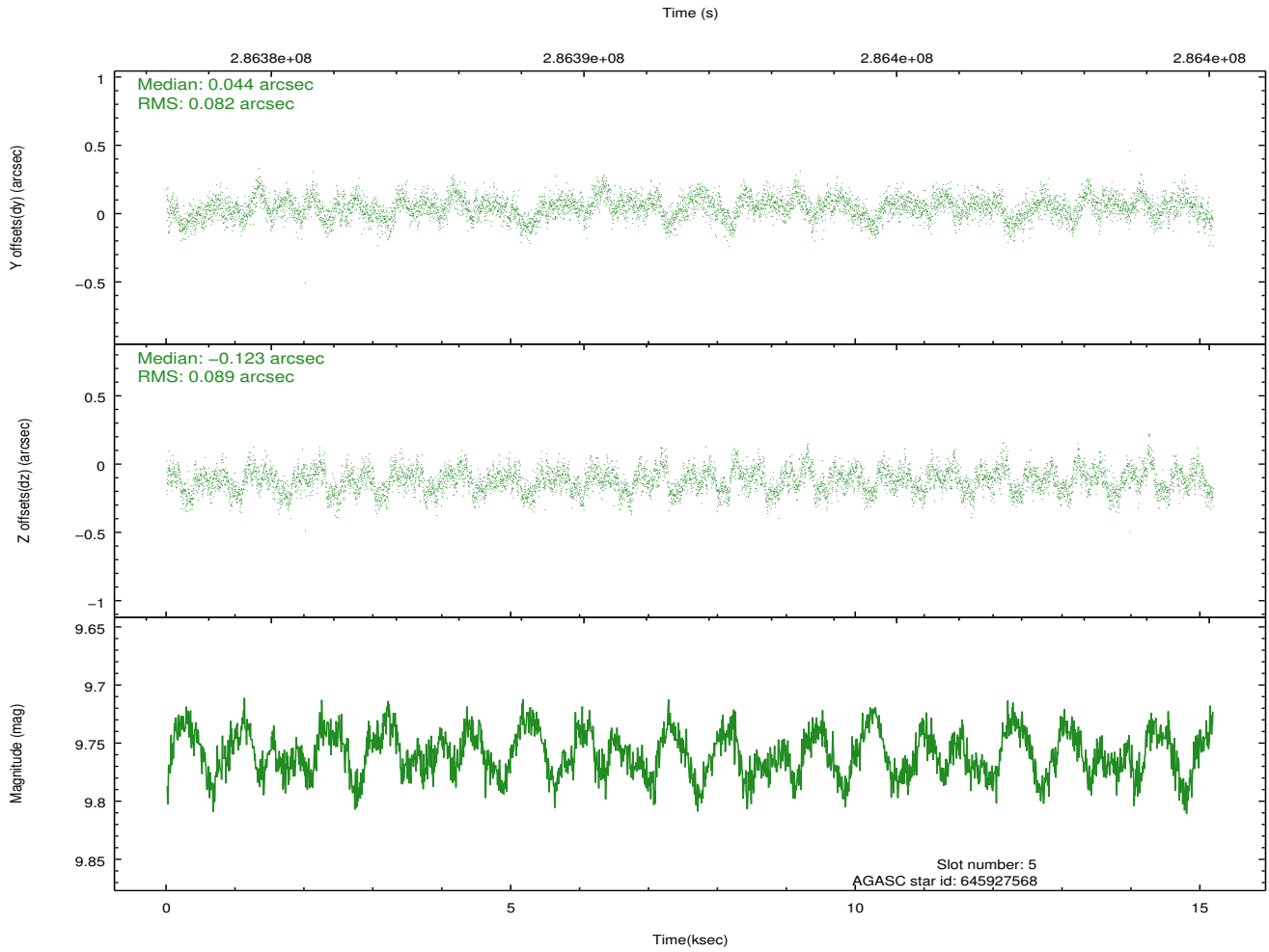
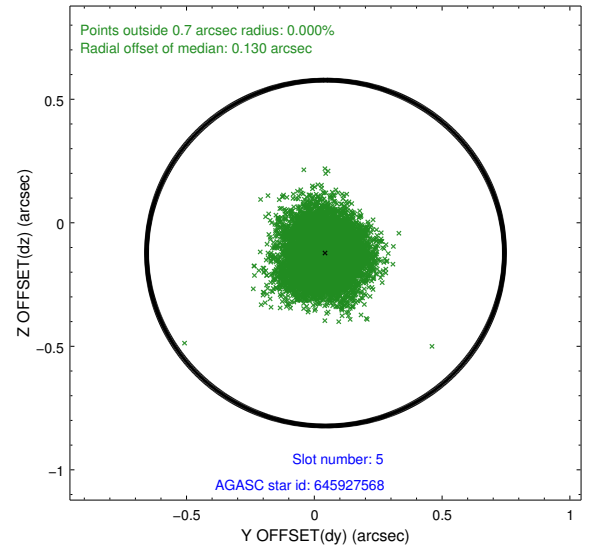
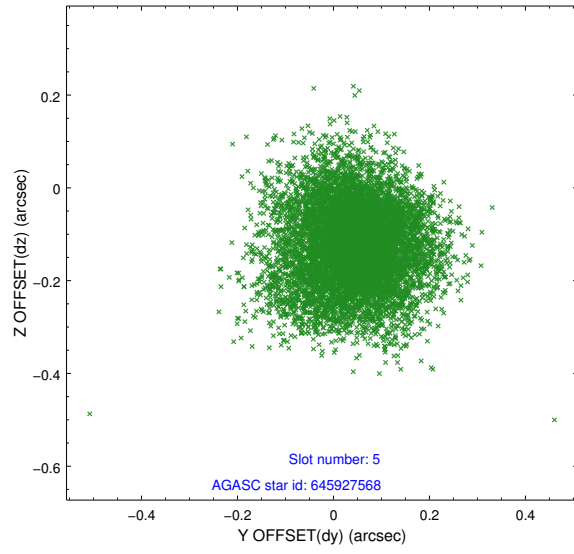


## 2.4.2 Slot 4

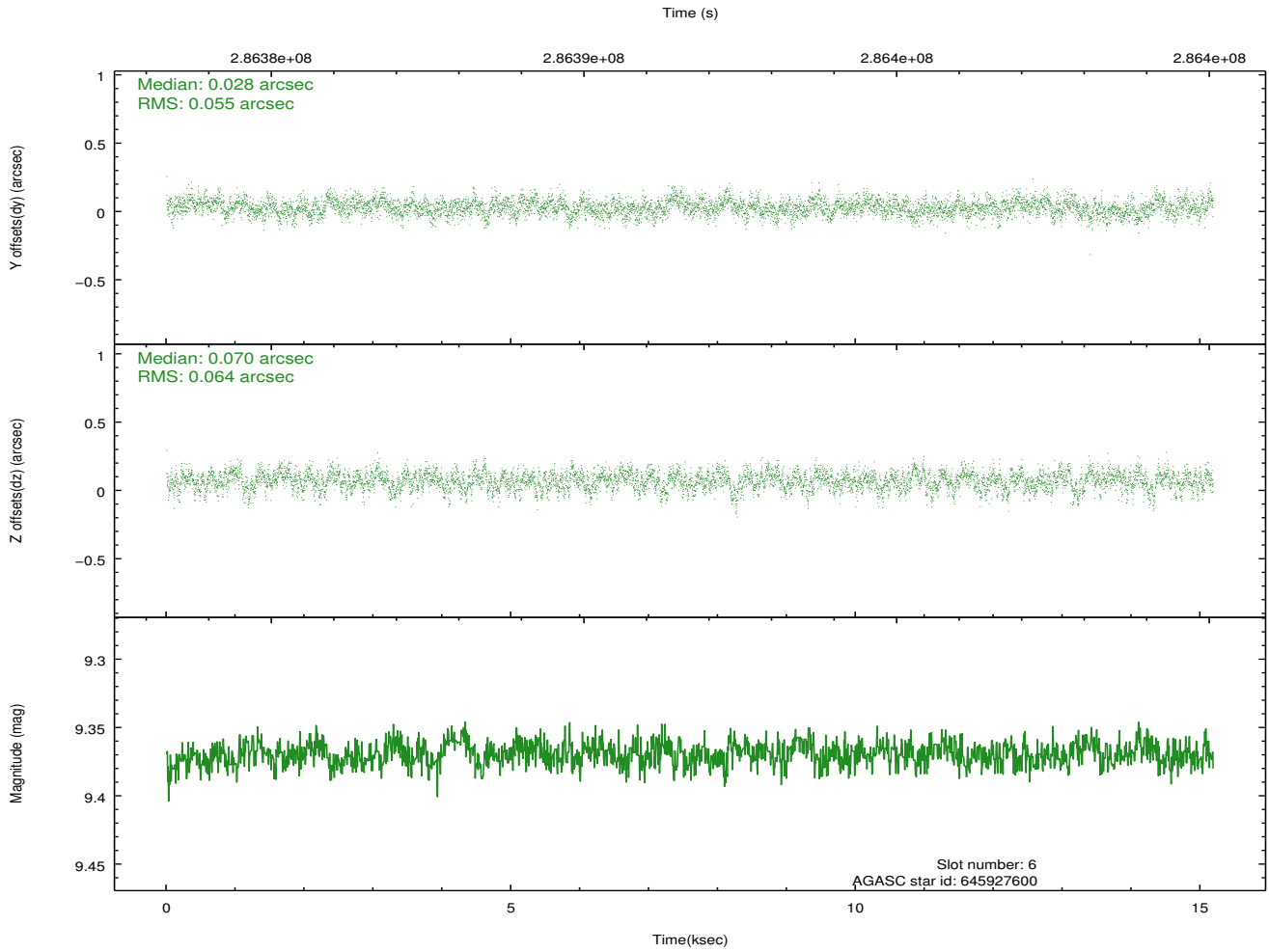
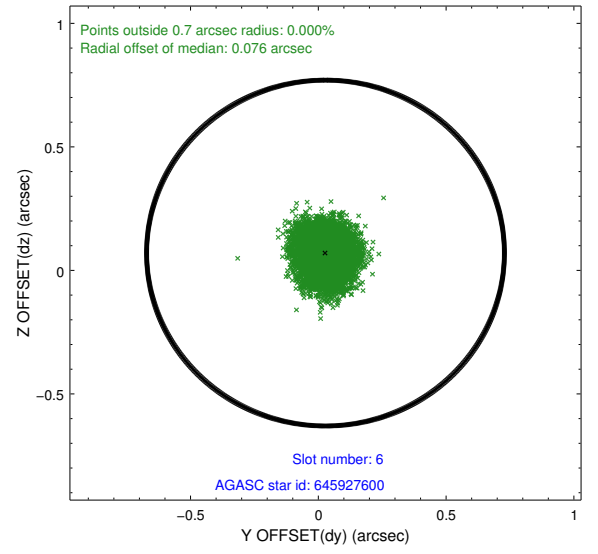
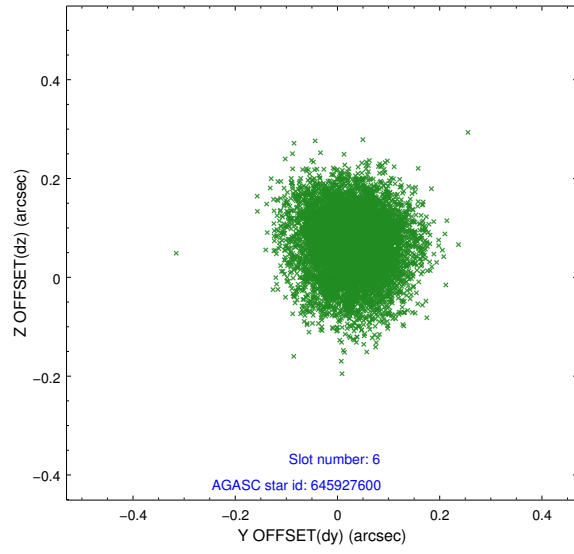




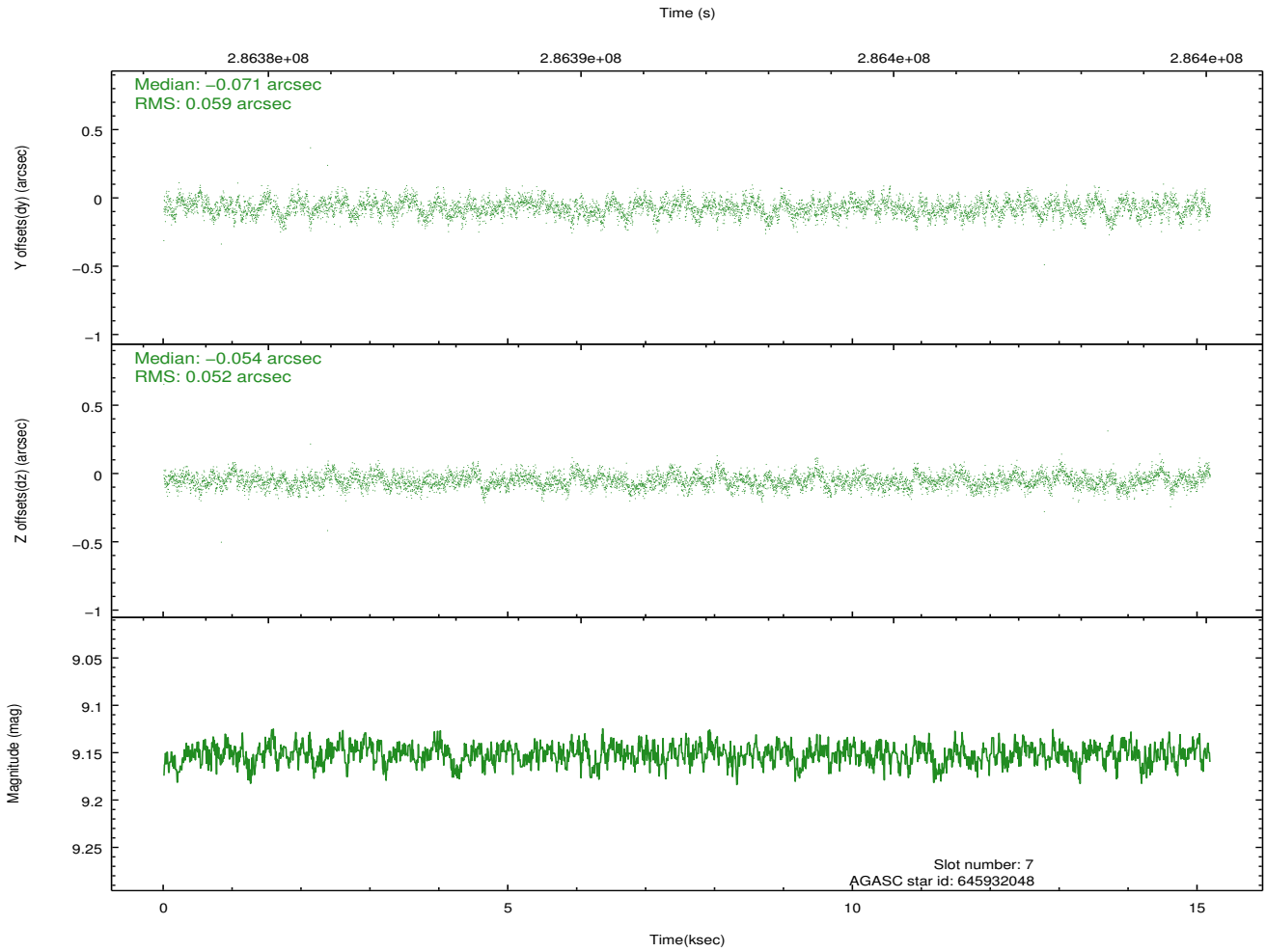
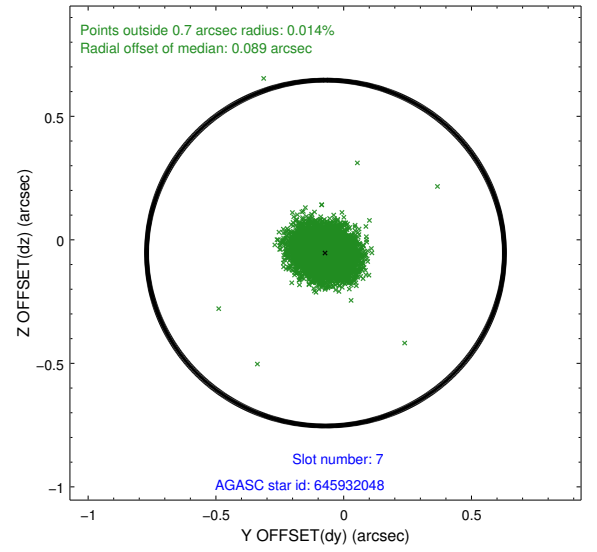
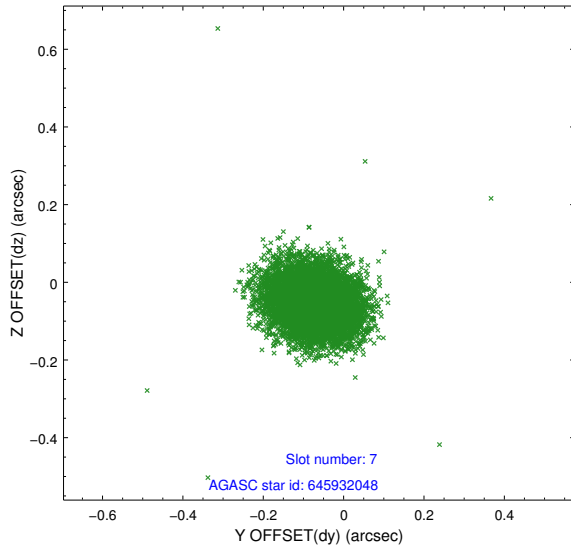
### 2.4.3 Slot 5



## 2.4.4 Slot 6

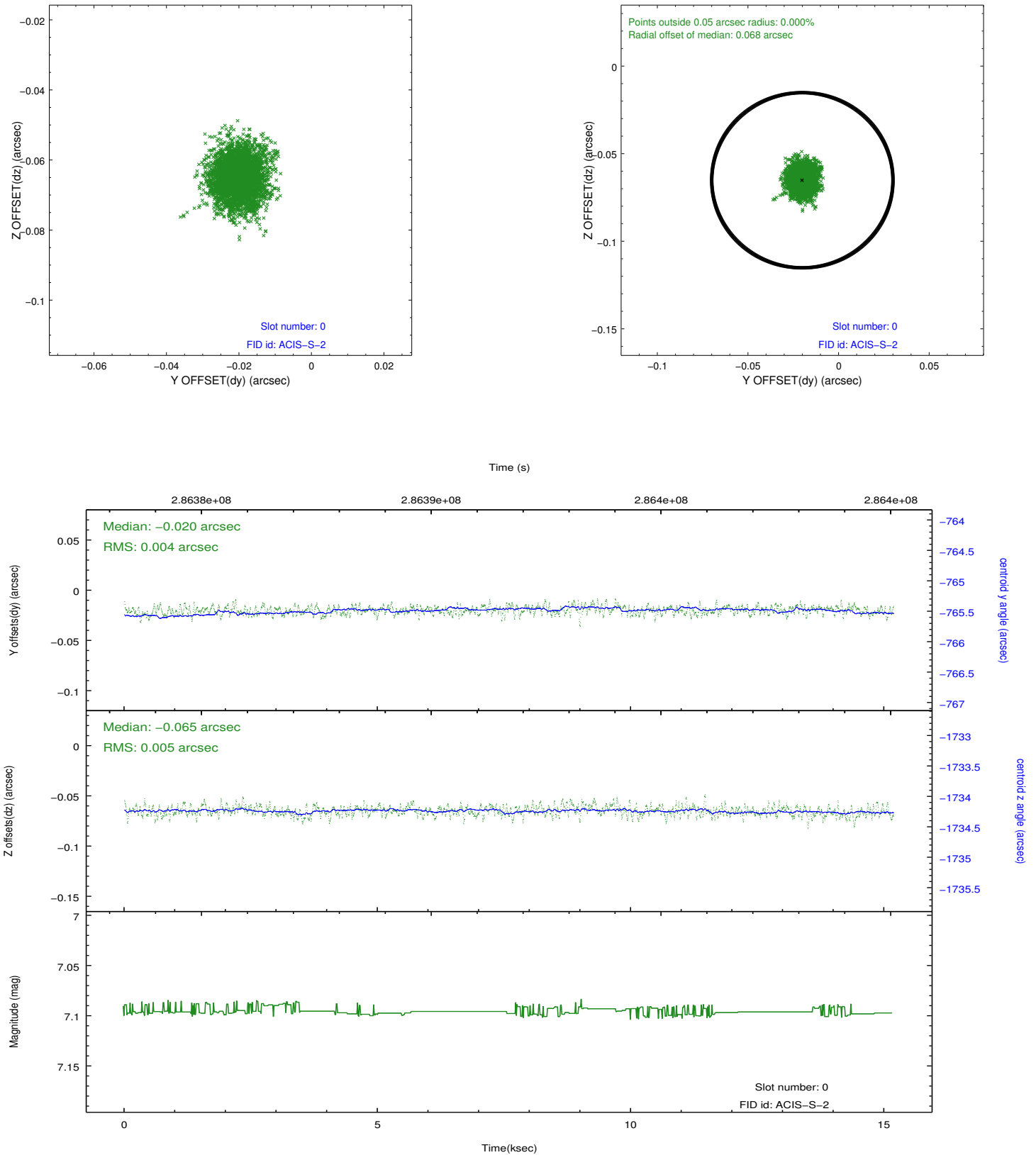


## 2.4.5 Slot 7

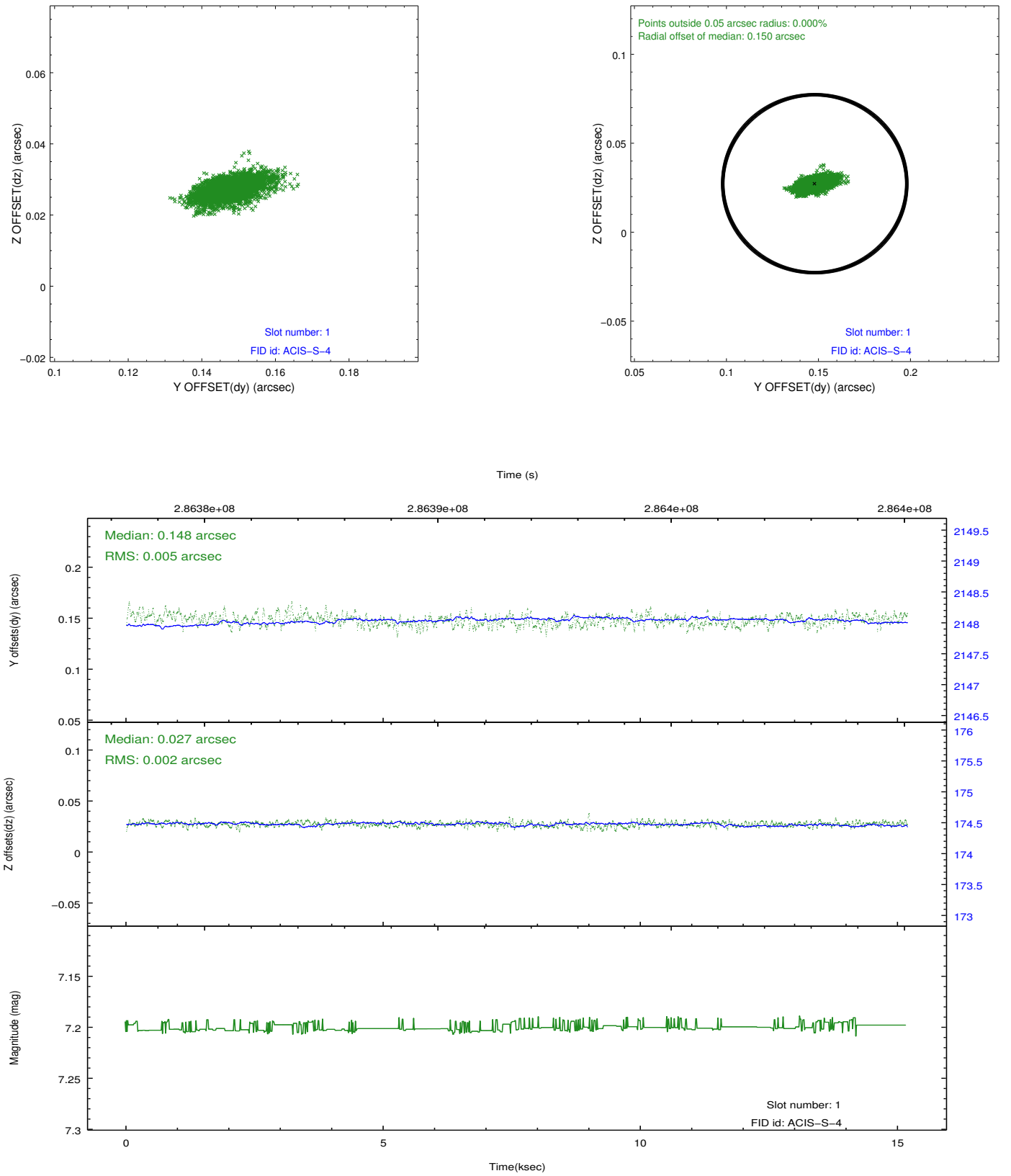


## 2.5 FID Slots

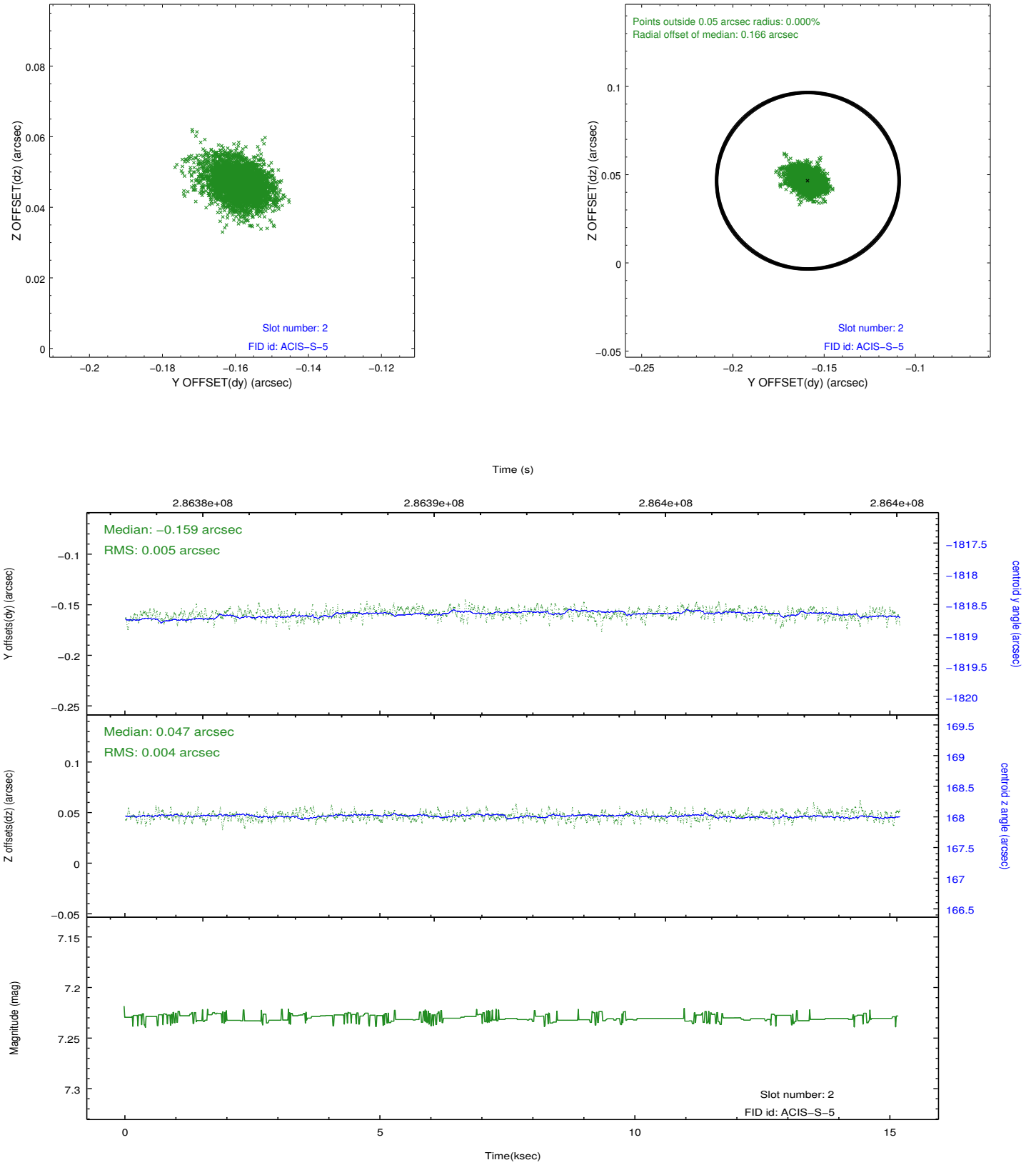
### 2.5.1 Slot 0



## 2.5.2 Slot 1



### 2.5.3 Slot 2



## A Summary

### A.1 Status

V&V Scientist	Jen Lauer
V&V Date (YYYY-MM-DD)	2012.04.19
V&V Edition	1
V&V Disposition and Status	OK
V&V Charge Time	15.177

### A.2 Comments