

V&V Reference Report

L2 ASCDS Version : 8.4.3.1

Observation 7340 - L2 Version 2
Chandra X-Ray Center

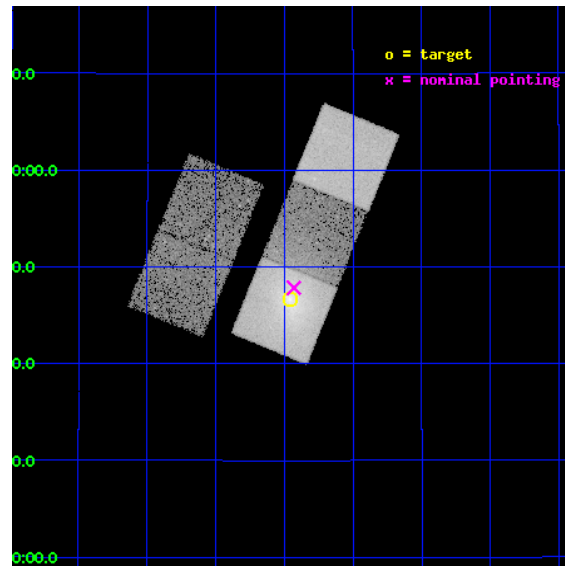
L2 Processing Date : Apr 3 2012

Contents

1	Front	2
2	OBI	3
2.1	OBI	3
2.1.1	Images	3
2.1.2	Bias	3
2.1.3	Parameters	4
2.1.4	Events	4
2.2	Compared Parameters	5
2.3	Aspect	6
2.4	Star Slots	9
2.4.1	Slot 3	9
2.4.2	Slot 4	10
2.4.3	Slot 5	11
2.4.4	Slot 6	12
2.4.5	Slot 7	13
2.5	FID Slots	14
2.5.1	Slot 0	14
2.5.2	Slot 1	15
2.5.3	Slot 2	16
A	Summary	17
A.1	Status	17
A.2	Comments	17

1 Front

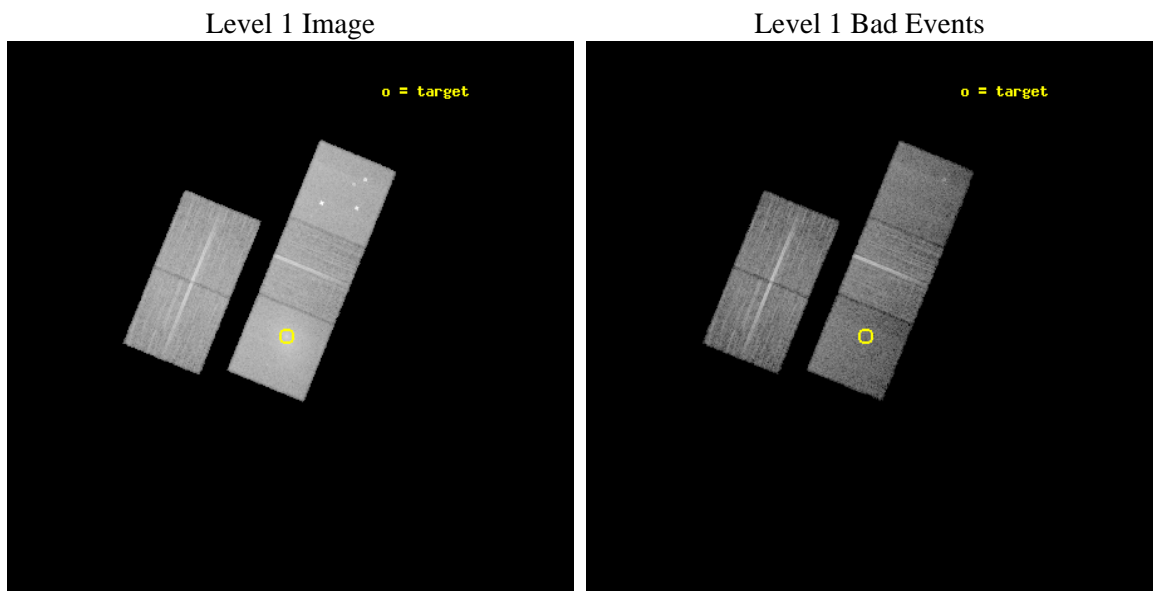
seq_num	800581	Sequence number
obs_id	7340	Observation id
title	Dark Matter in the Core of the Relaxed Cluster A2589	Proposal titl
observer	Dr. DAVID BUOTE	Principal investigator
object	Abell 2589	Source name
dtcycle	0	
cycle	P	events from which exps? Prim/Second/Both
ra_targ	350.989167	Observer's specified target RA [deg]
dec_targ	16.7775	Observer's specified target Dec [deg]
ra_nom	350.98267739154	Nominal RA [deg]
dec_nom	16.797332445806	Nominal Dec [deg]
roll_nom	112.15849472351	Nominal Roll [deg]
revision	2	Processing version of data
ontime	15106.299970925	Sum of GTIs [s]
livetime	14908.925040708	Livetime [s]
ontime2	15103.159000695	Sum of GTIs [s]
ontime3	15103.159000665	Sum of GTIs [s]
ontime5	15106.299970925	Sum of GTIs [s]
ontime6	15103.159000635	Sum of GTIs [s]
ontime7	15106.299970925	Sum of GTIs [s]
l2events	209331	Number of level 2 events



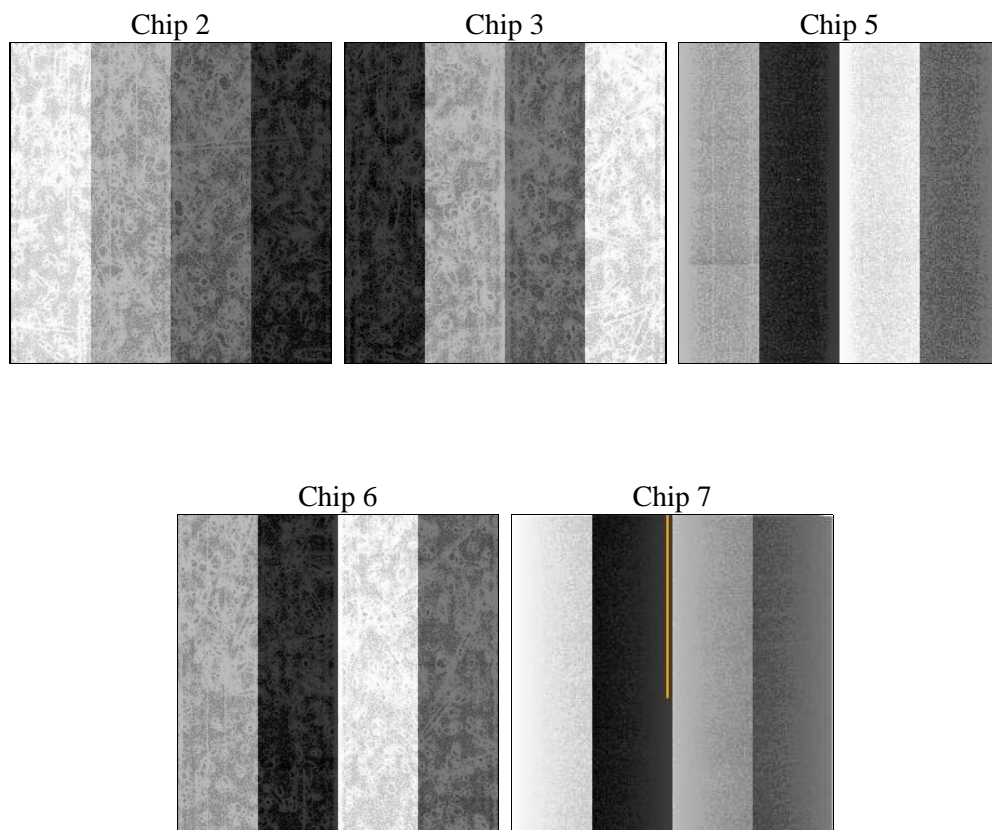
2 OBI

2.1 OBI

2.1.1 Images



2.1.2 Bias



2.1.3 Parameters

obi_num	0	Obi number	sched_exp_time	15000.000000	[s] Scheduled observation exposure time
ascdsver	8.4.3	Processing system revision	ontime	15106.299970925	Sum of GTIs [s]
caldbver	4.4.9	 	ontime2	15103.159000695	Sum of GTIs [s]
date	2012-04-03T11:52:19	Date and time of file creation	ontime3	15103.159000665	Sum of GTIs [s]
revision	2	Processing version of data	ontime5	15106.299970925	Sum of GTIs [s]
			ontime6	15103.159000635	Sum of GTIs [s]
			ontime7	15106.299970925	Sum of GTIs [s]
			l1events	729990	Number of level 1 events

2.1.4 Events

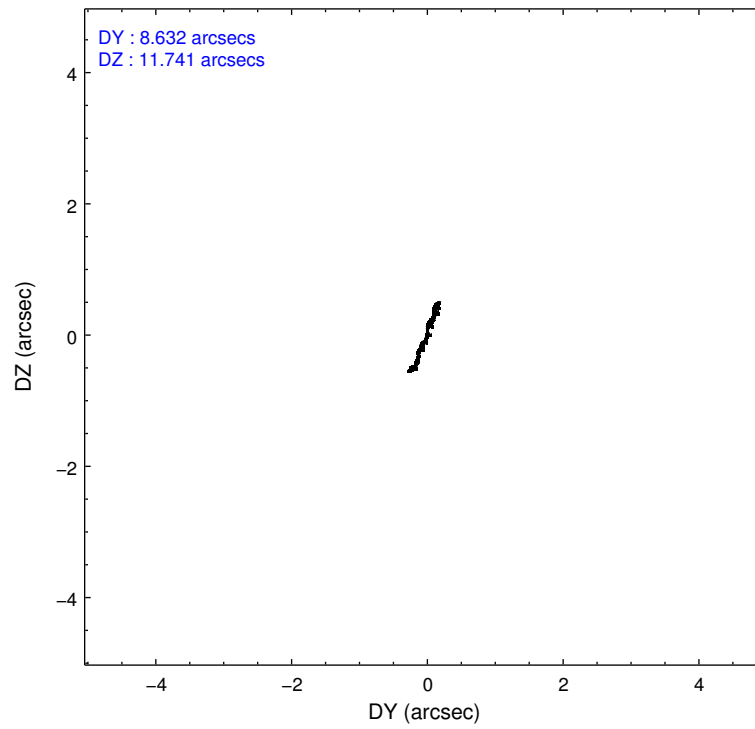
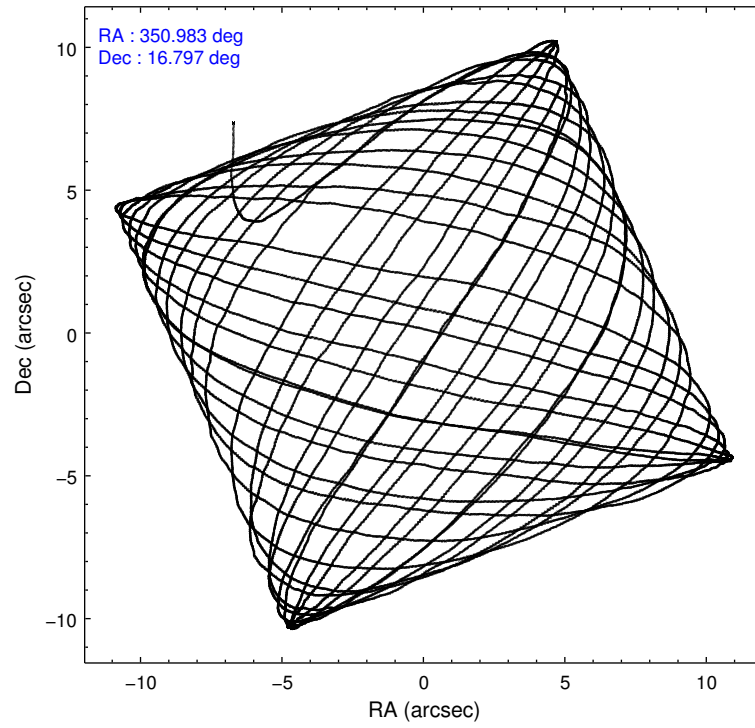
	ccd 2	ccd 3	ccd 5	ccd 6	ccd 7
level 1 events	125758	120814	170387	129504	183527
rejected events	114117	109724	89913	112438	78421
rejected %	90%	90%	52%	86%	42%

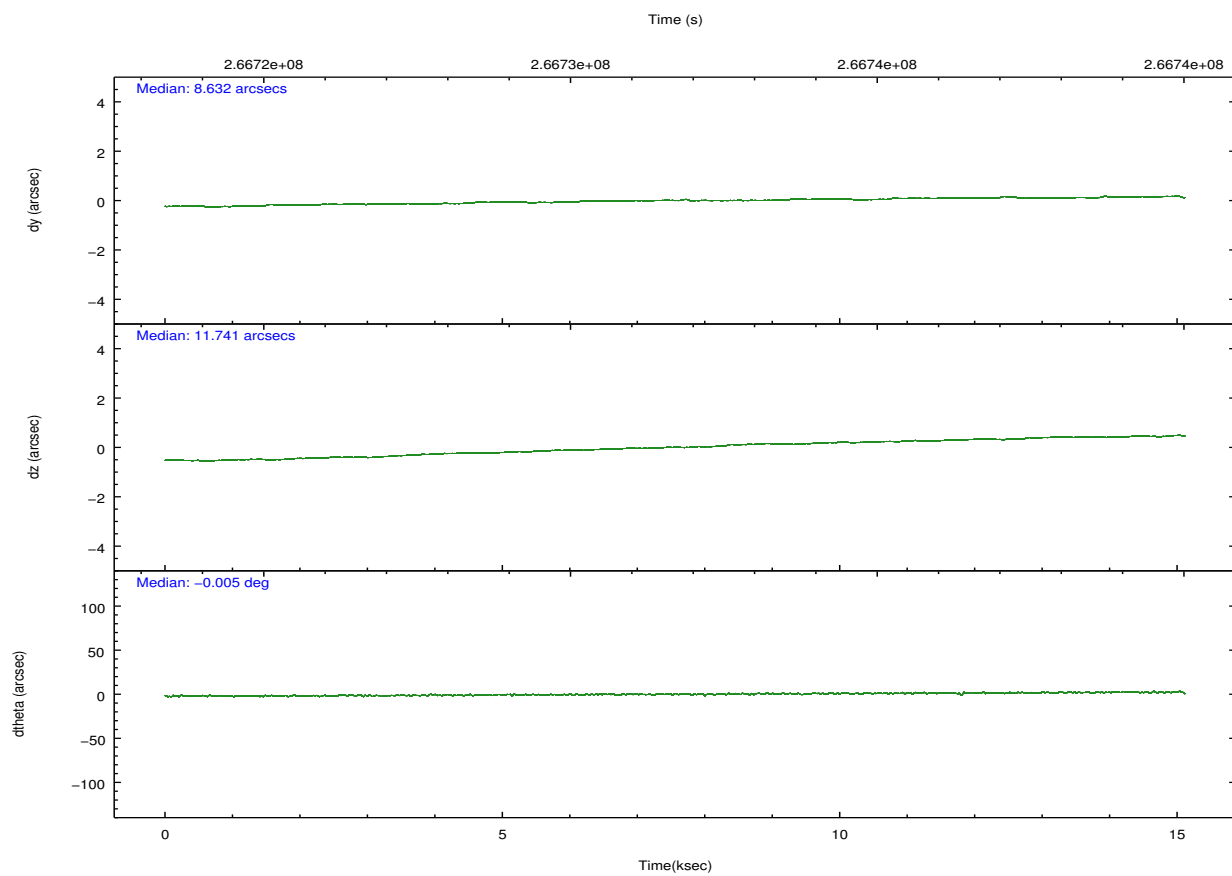
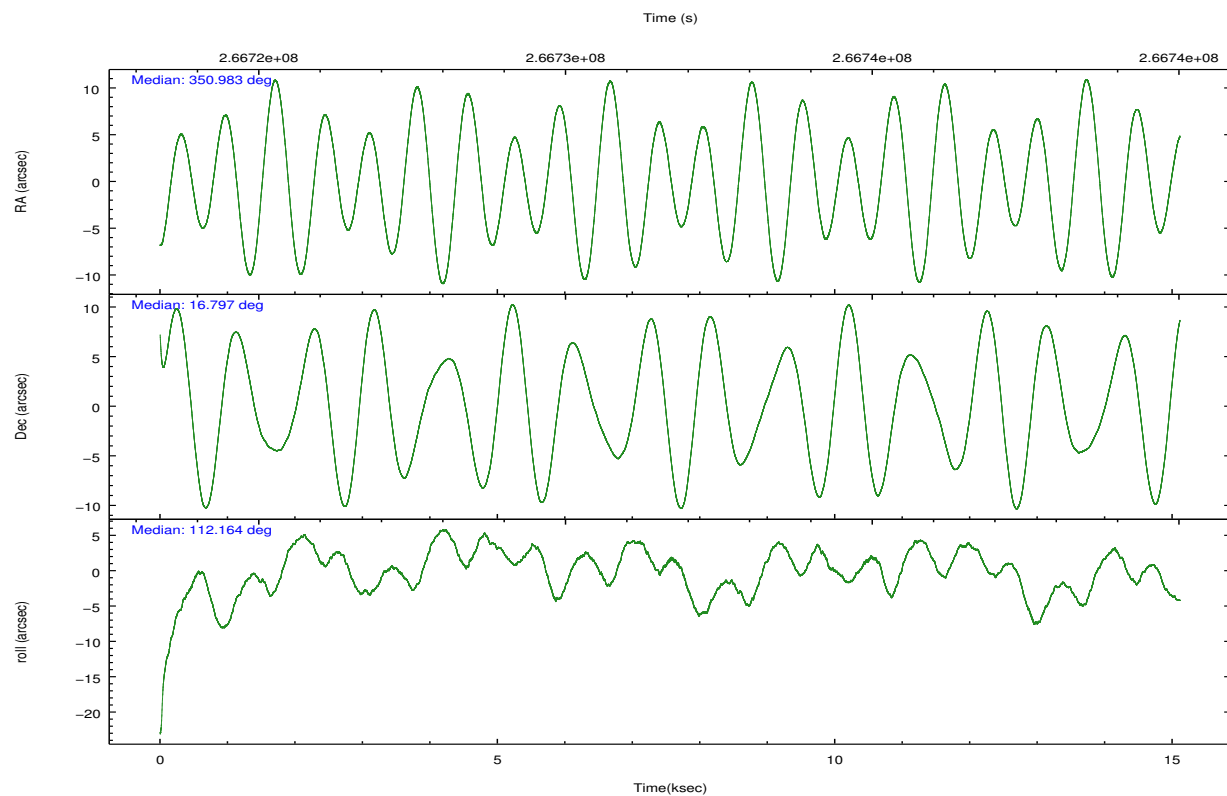
	ccd 2	ccd 3	ccd 5	ccd 6	ccd 7
grade 0 events	4884	4470	12314	8872	20389
	3%	3%	7%	6%	11%
grade 1 events	65	79	334	76	136
	0%	0%	0%	0%	0%
grade 2 events	2793	2477	24604	3303	25137
	2%	2%	14%	2%	13%
grade 3 events	1296	1358	3594	1509	11348
	1%	1%	2%	1%	6%
grade 4 events	1301	1299	3448	1517	11426
	1%	1%	2%	1%	6%
grade 5 events	3798	4752	13356	4811	14409
	3%	3%	7%	3%	7%
grade 6 events	2147	2246	42517	2795	41511
	1%	1%	24%	2%	22%
grade 7 events	109474	104133	70220	106621	59171
	87%	86%	41%	82%	32%

2.2 Compared Parameters

Parameter	Planned	Actual	Parameter	Planned	Actual
Instrument	ACIS	ACIS	Obspar format version number	7	7
Detector	ACIS-23567	ACIS-23567	Obspar file type	PREDICTED	ACTUAL
Grating	NONE	NONE	Obspar update status	NONE	UPDATED
Data mode	VFAINT	VFAINT	Number of optional ACIS chips dropped	0	0
Observation mode	POINTING	POINTING	On-chip summing requested	N	N
[deg] Pointing RA	351.005385	350.9826773915363	Subarray requested	NONE	NONE
[deg] Pointing Dec	16.780896	16.79733244580641	Alternating exposures requested	N	N
[deg] Pointing Roll	111.995317	112.1584947235124	[s] Primary exposure time	0.000000	3.1
[mm] SIM focus pos	-0.684267	-0.6828225247311905			
[mm] SIM defocus	0	0.001444936568705701			
[mm] SIM translation stage pos	-190.132523	-190.1400660498719			
[mm] SIM translation stage offset	0	0.00754346686406393			
[s] Observation start time (MET)	266724261.184000	266722758.01715			
Observation start date	2006-06-15T02:03:16	2006-06-15T01:39:18			
[s] Observation end time (MET)	266739261.184000	266739816.06794			
Observation end date	2006-06-15T06:13:16	2006-06-15T06:23:36			
Read mode	TIMED	TIMED			

2.3 Aspect



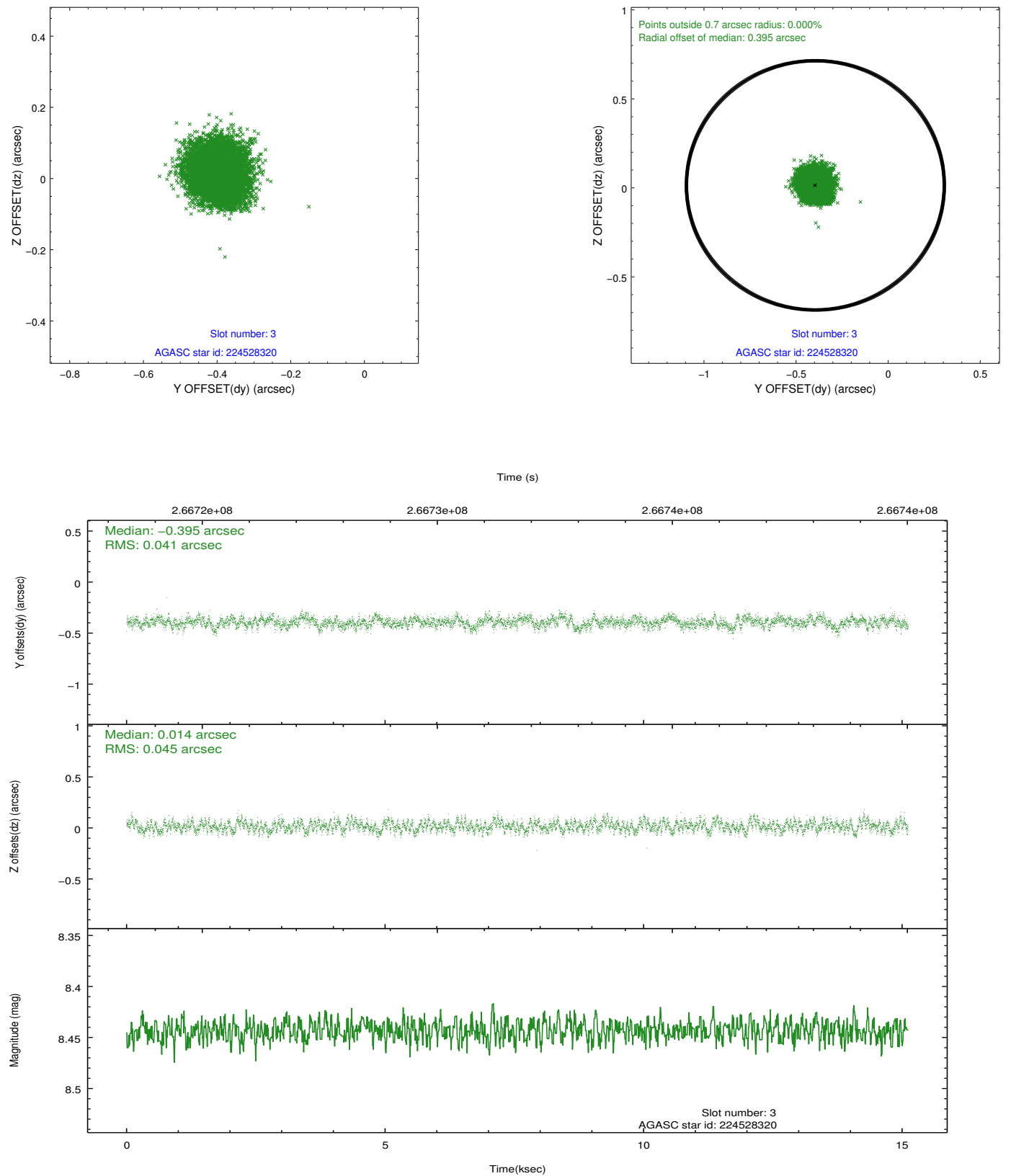


Slot Statistics

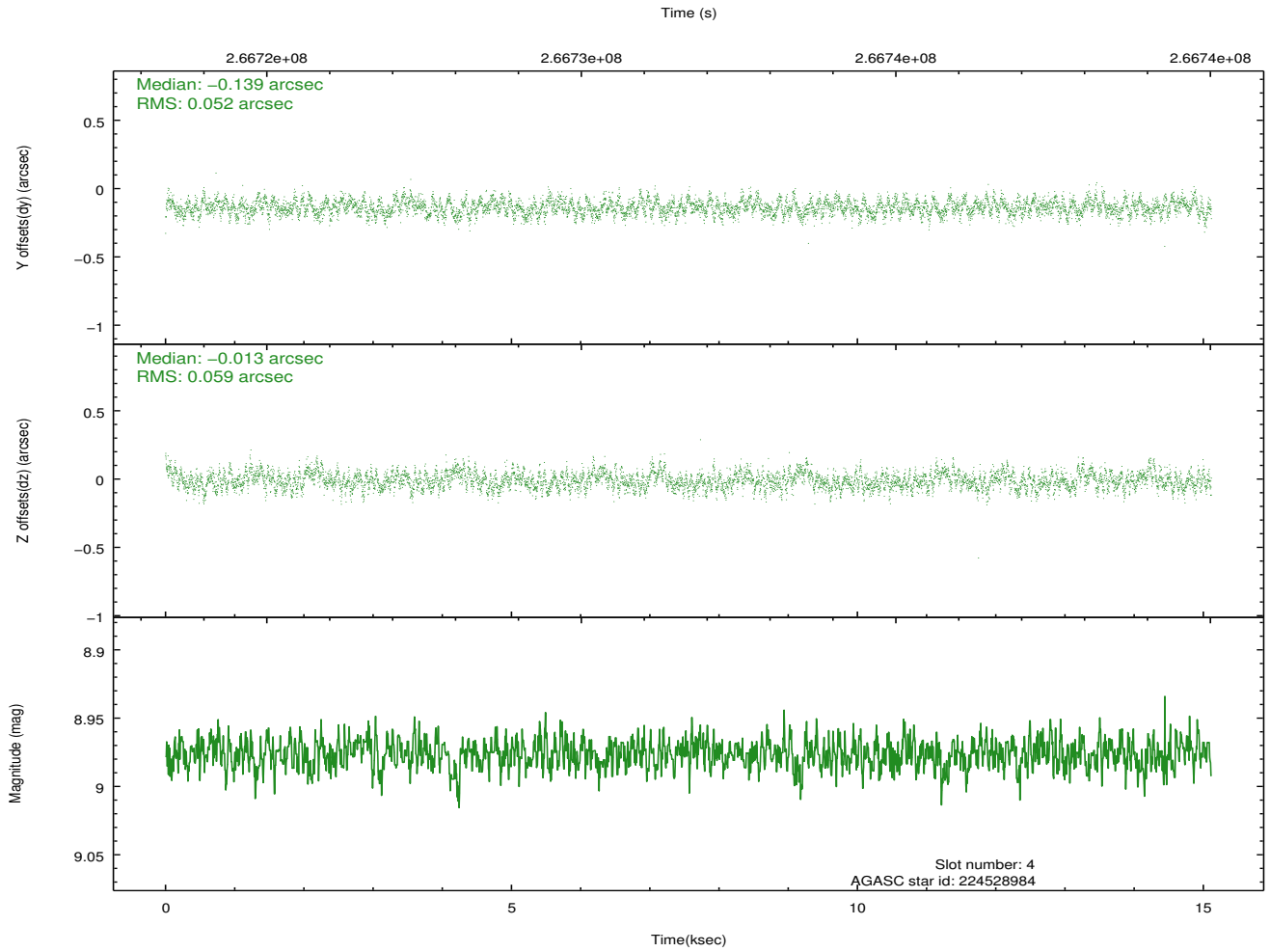
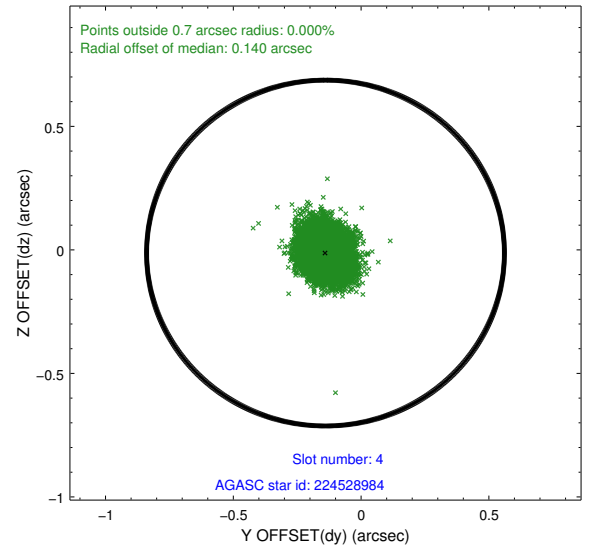
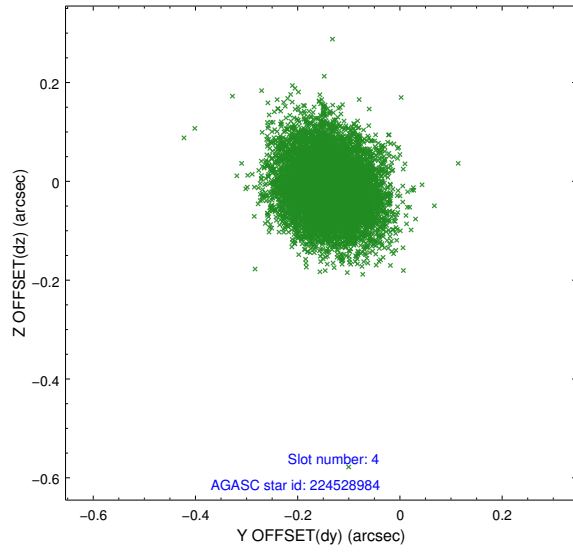
slot	status	id	mag	n_pts	med_dy	med_dz	dr1	dr2	ra	dec	mean_y	mean_z
0	FID	ACIS-S-2	7.11	3687	0.012	-0.024	0.013	0.019	0.000000	0.000000	-761.38	-1733.05
1	FID	ACIS-S-5	7.24	3687	-0.092	0.018	0.015	0.024	0.000000	0.000000	-1814.75	168.65
2	FID	ACIS-S-6	7.35	3687	0.054	0.014	0.008	0.013	0.000000	0.000000	399.93	812.91
3	GUIDE	224528320	8.44	7371	-0.395	0.014	0.065	0.102	350.399607	17.080070	1781.69	1528.34
4	GUIDE	224528984	8.98	7367	-0.139	-0.013	0.084	0.133	350.492856	16.632535	167.56	1836.43
5	GUIDE	224531944	9.21	7348	0.200	-0.011	0.089	0.147	350.741588	16.203421	-1585.61	1624.71
6	GUIDE	224533680	8.74	7374	0.126	0.024	0.091	0.146	350.766494	16.068901	-2067.46	1727.37
7	GUIDE	224534128	9.84	7359	0.207	-0.020	0.138	0.223	350.785621	16.074165	-2074.37	1658.36

2.4 Star Slots

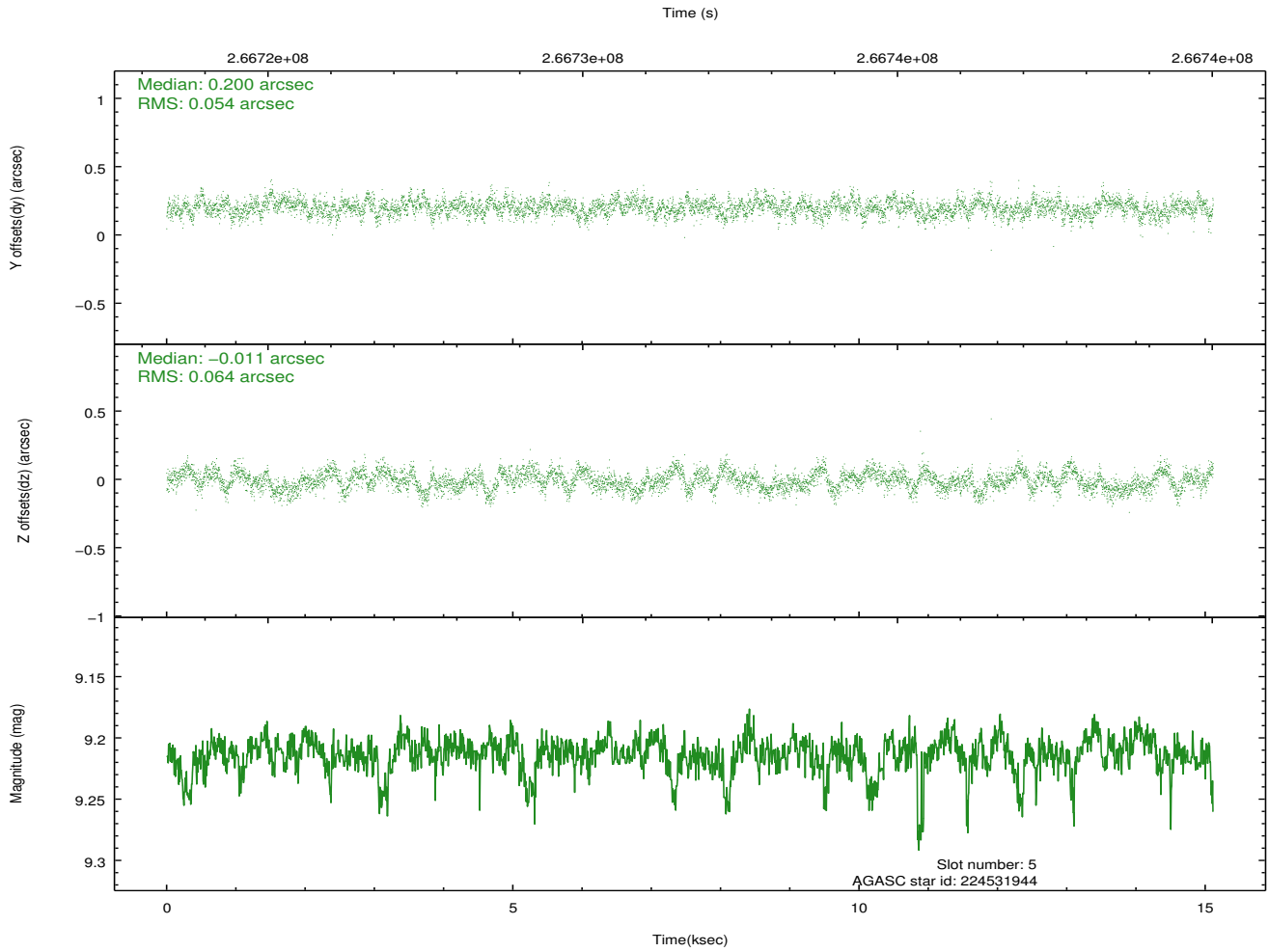
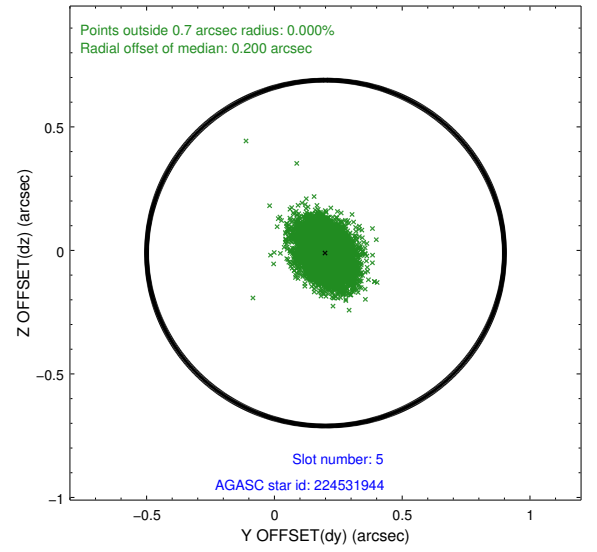
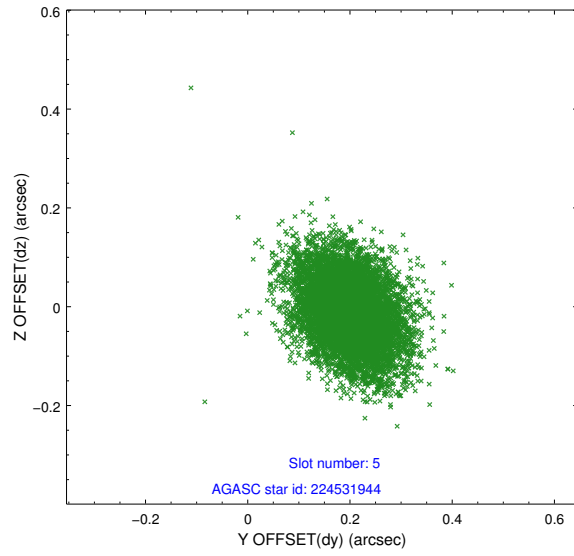
2.4.1 Slot 3



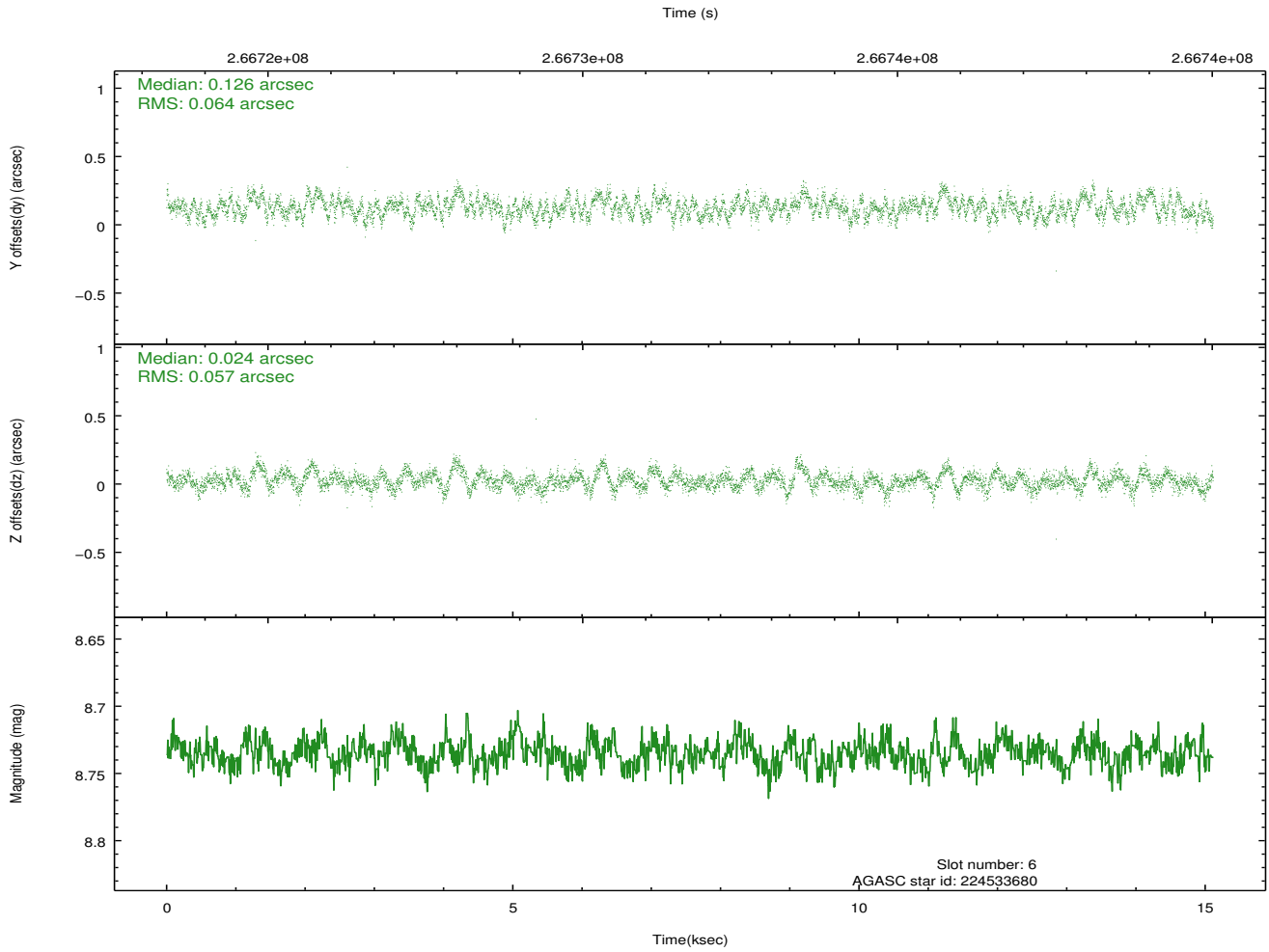
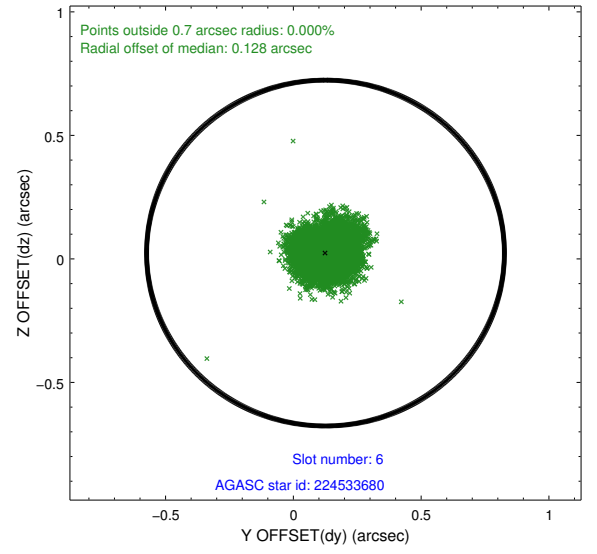
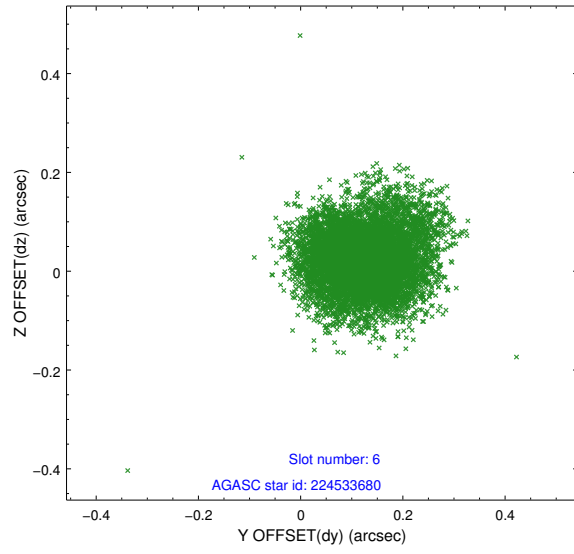
2.4.2 Slot 4



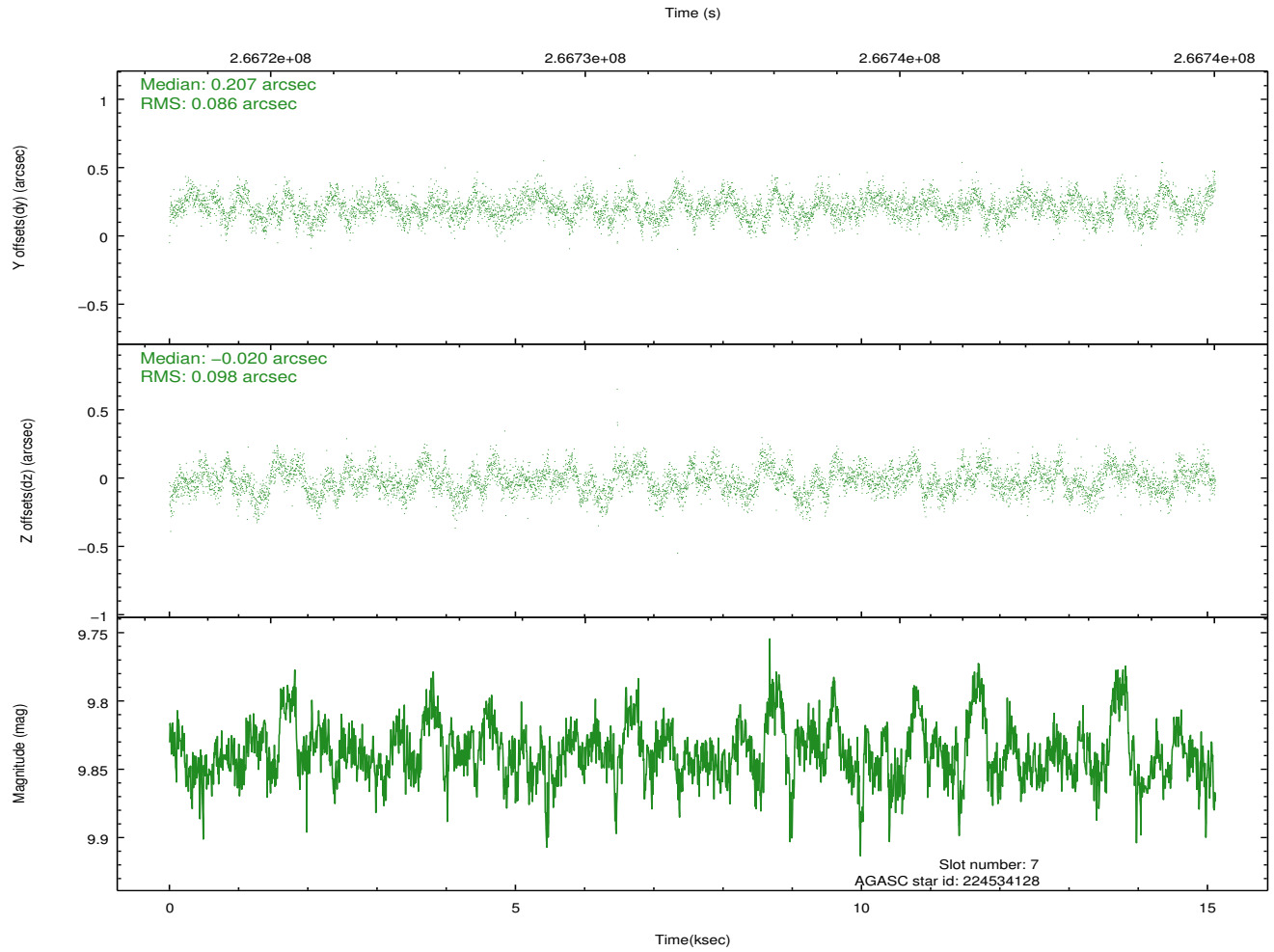
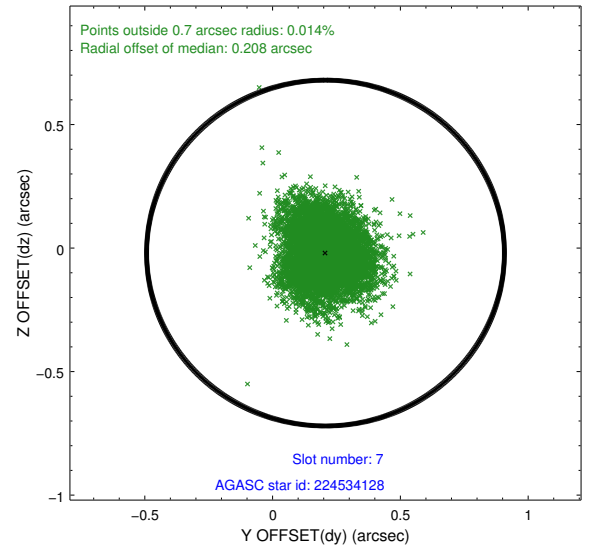
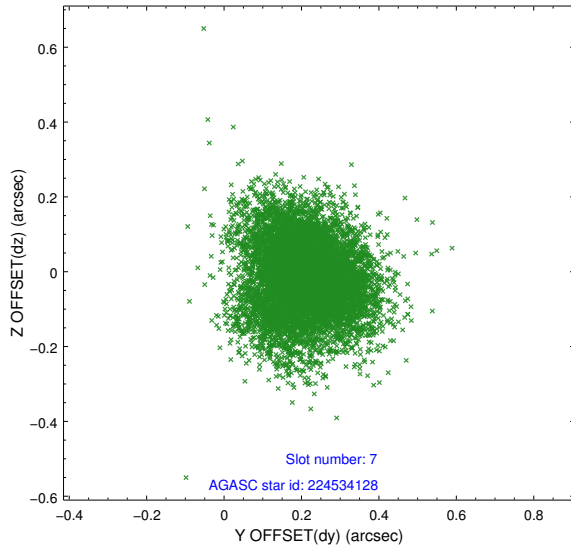
2.4.3 Slot 5



2.4.4 Slot 6

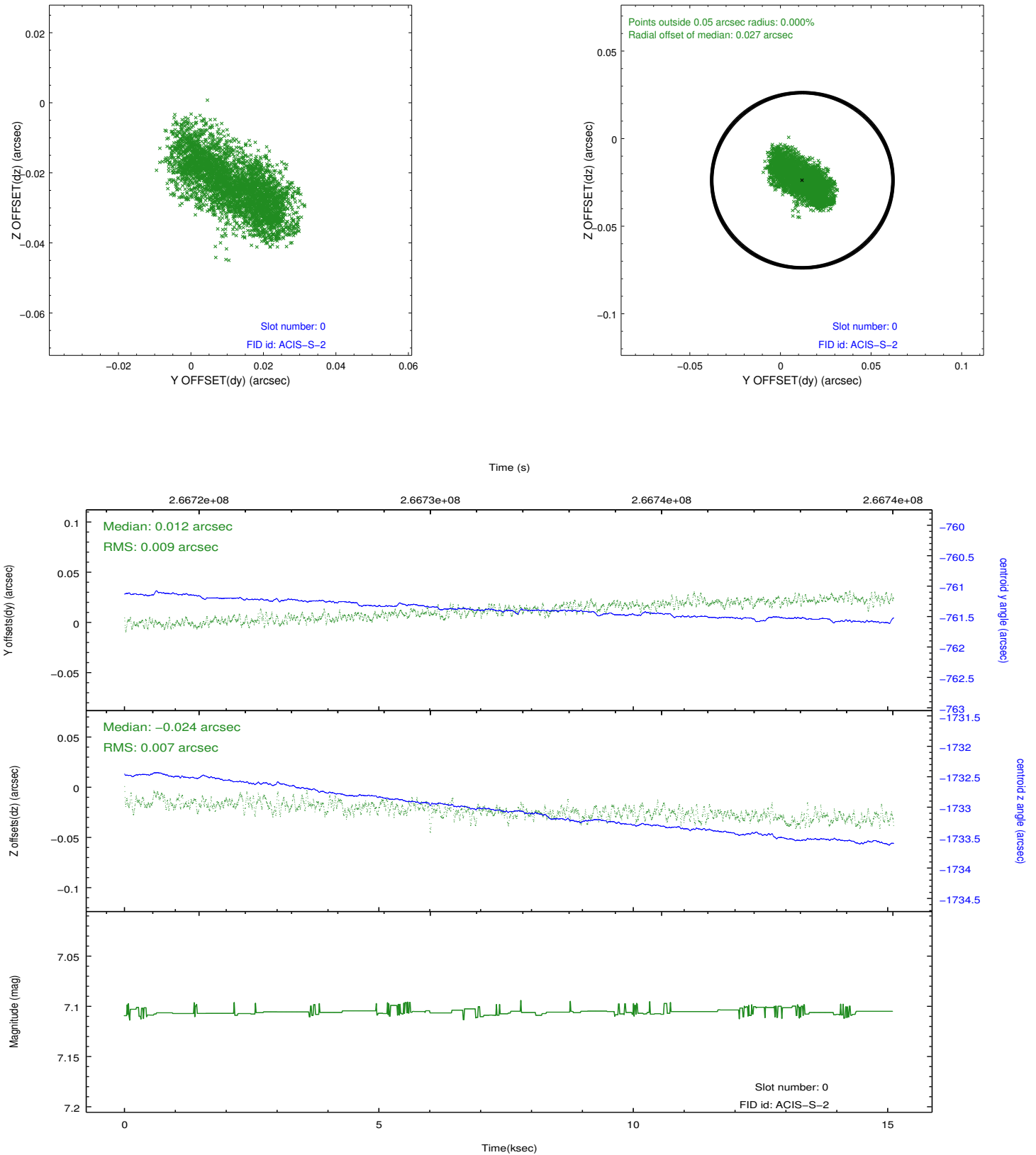


2.4.5 Slot 7

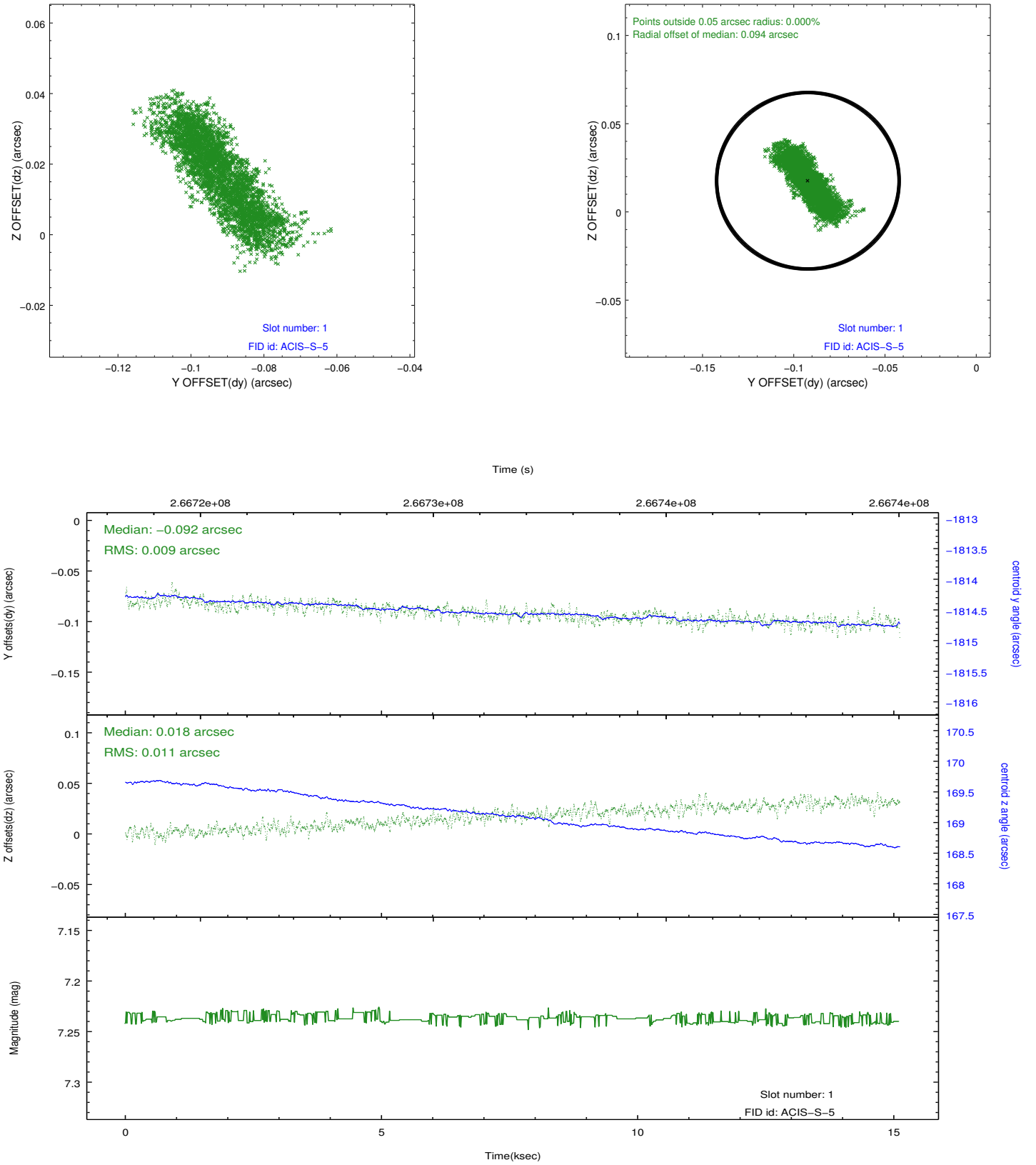


2.5 FID Slots

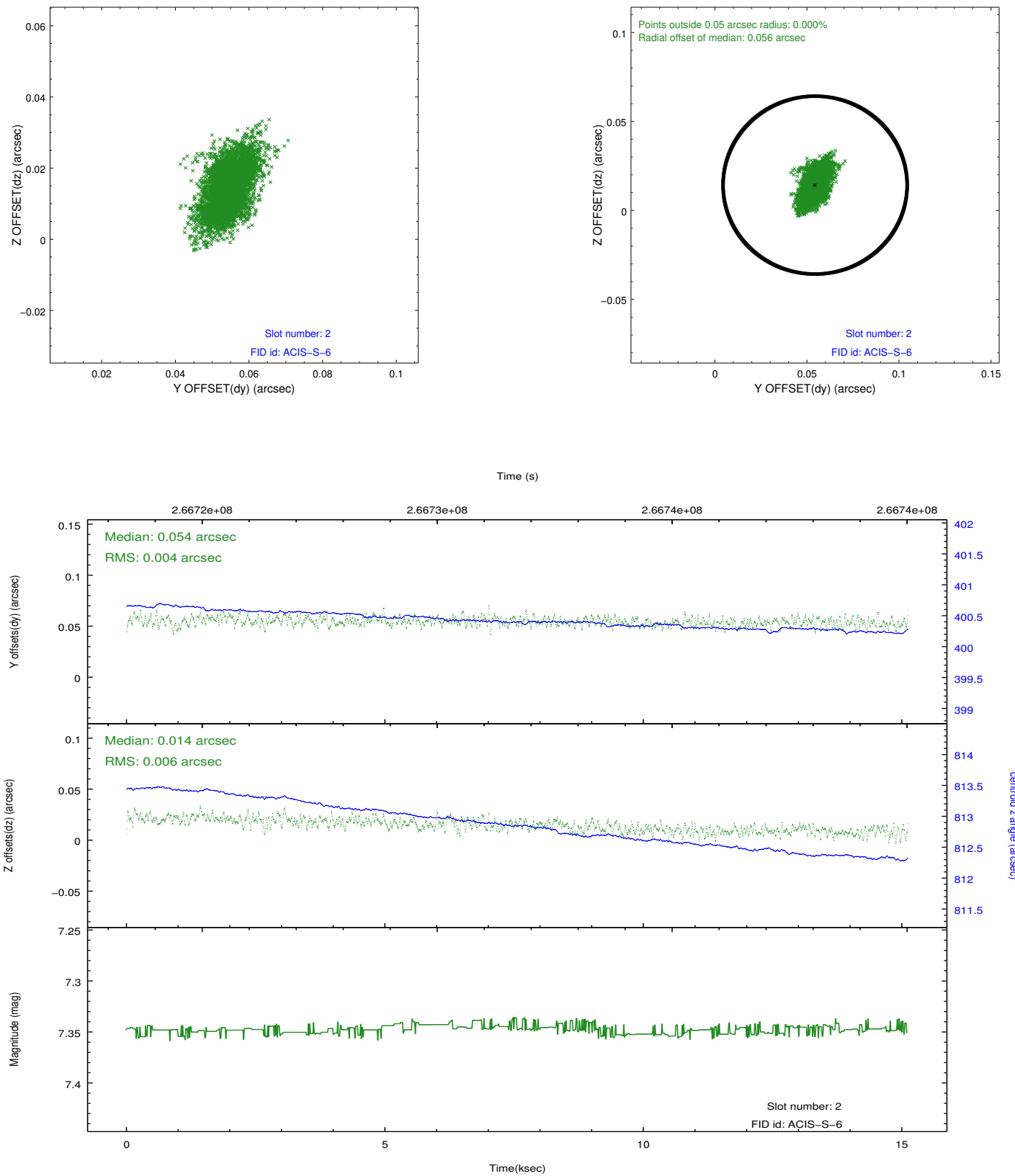
2.5.1 Slot 0



2.5.2 Slot 1



2.5.3 Slot 2



A Summary

A.1 Status

V&V Scientist	Beth Sundheim
V&V Date (YYYY-MM-DD)	2012.04.04
V&V Edition	1
V&V Disposition and Status	OK
V&V Charge Time	15.1062999

A.2 Comments