

V&V Reference Report

L2 ASCDS Version : 8.4.5

Observation 720 - L2 Version 6
Chandra X-Ray Center

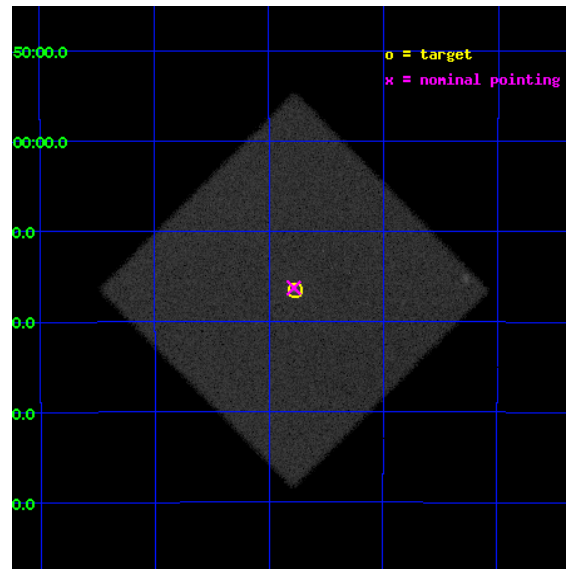
L2 Processing Date : Aug 24 2012

Contents

1	Front	2
2	OBI	3
2.1	OBI	3
2.1.1	Images	3
2.1.2	Parameters	4
2.1.3	Events	4
2.2	Compared Parameters	5
2.3	Aspect	6
2.4	Star Slots	9
2.4.1	Slot 3	9
2.4.2	Slot 4	10
2.4.3	Slot 5	11
2.4.4	Slot 6	12
2.4.5	Slot 7	13
2.5	FID Slots	14
2.5.1	Slot 0	14
2.5.2	Slot 1	15
2.5.3	Slot 2	16
A	Summary	17
A.1	Status	17
A.2	Comments	17

1 Front

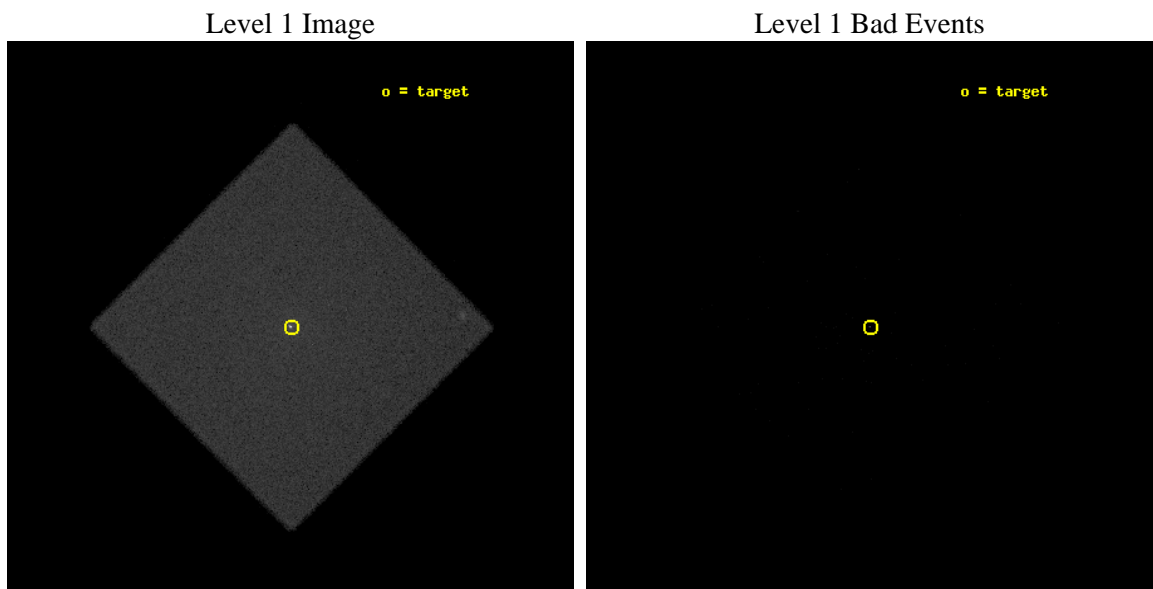
seq_num	400087	Sequence number
obs_id	720	Observation id
title	BRIGHT LMXB GLOBULAR CLUSTER SURVEY: NATURE, MASSES AND CLUSTER DYNAMICS	Proposal title
observer	Professor Johnathan Grindlay	Principal investigator
object	TERZAN 6	Source name
ra_targ	267.6933	Observer's specified target RA [deg]
dec_targ	-31.2753	Observer's specified target Dec [deg]
ra_nom	267.69536990855	Nominal RA [deg]
dec_nom	-31.270963817124	Nominal Dec [deg]
roll_nom	90.201111377862	Nominal Roll [deg]
revision	6	Processing version of data
ontime	10025.781616241	[s]
livetime	9965.4223876152	Ontime multiplied by DTCOR
l2events	335216	Number of level 2 events



2 OBI

2.1 OBI

2.1.1 Images



2.1.2 Parameters

obi_num	0	Obi number	sched_exp_time	7500.000000	[s] Scheduled observation exposure time
ascdsver	8.4.5	Processing system revision	ontime	10025.781616241	[s]
caldbver	4.5.1.1	 	l1events	503530	Number of level 1 events
date	2012-08-24T04:56:55	Date and time of file creation			
revision	6	Processing version of data			

2.1.3 Events

Level 1 Events

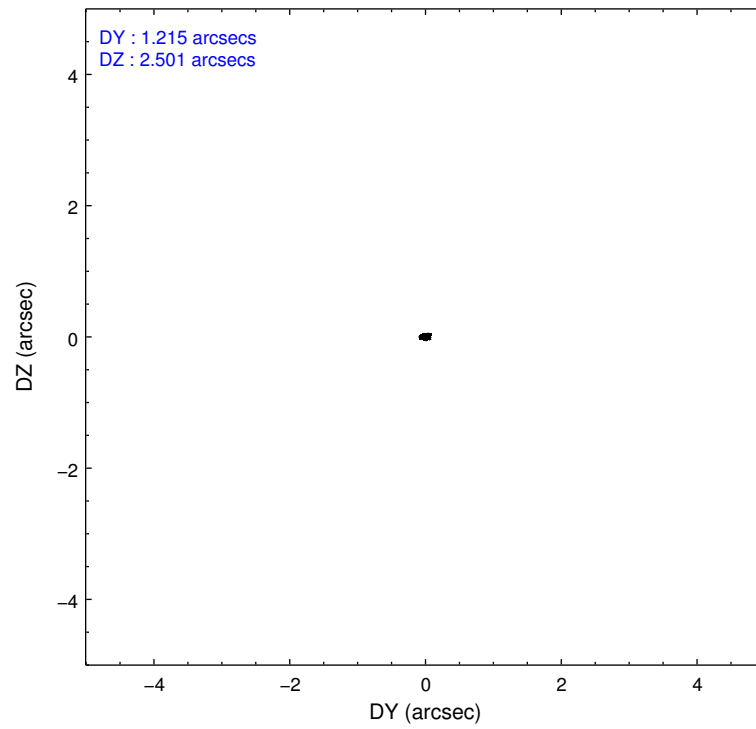
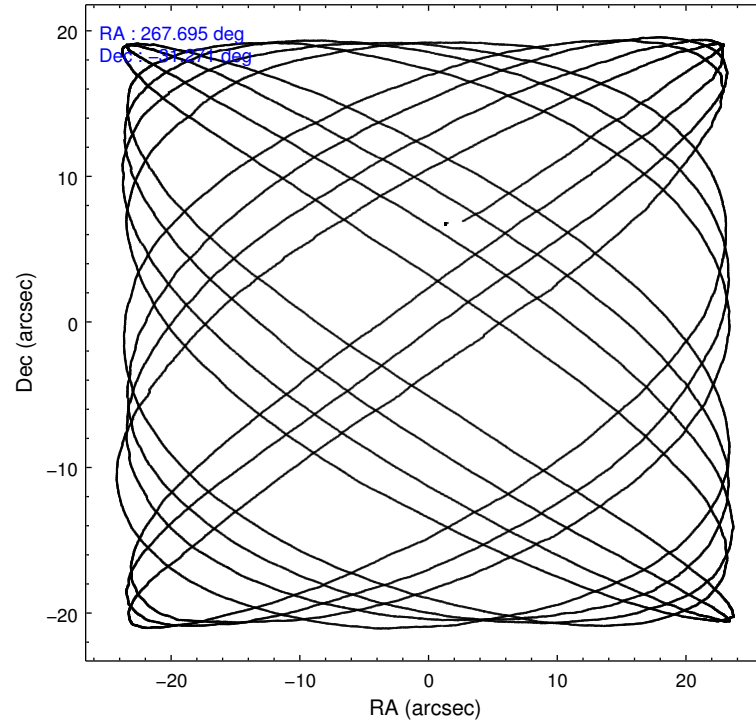
	segment 0
level 1 events	503530
rejected events	14689
rejected %	2%

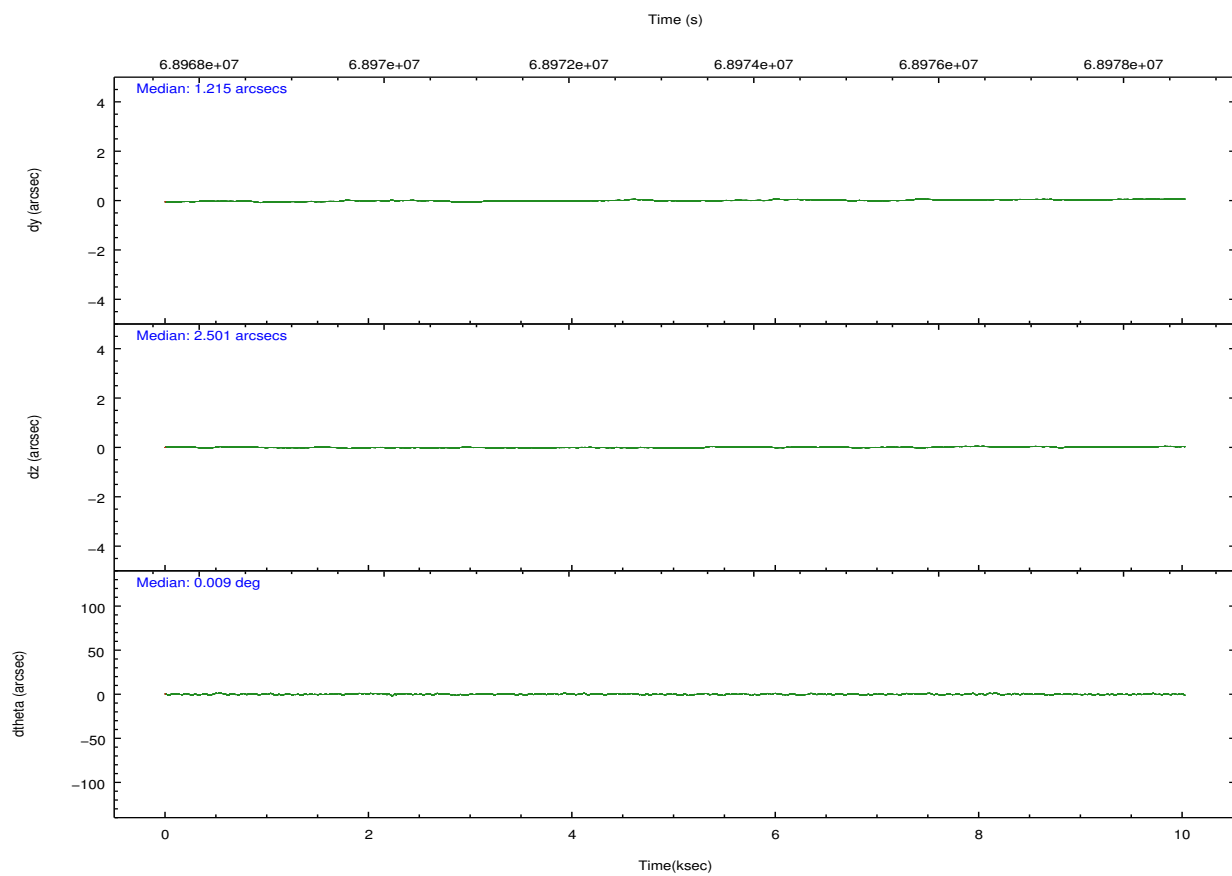
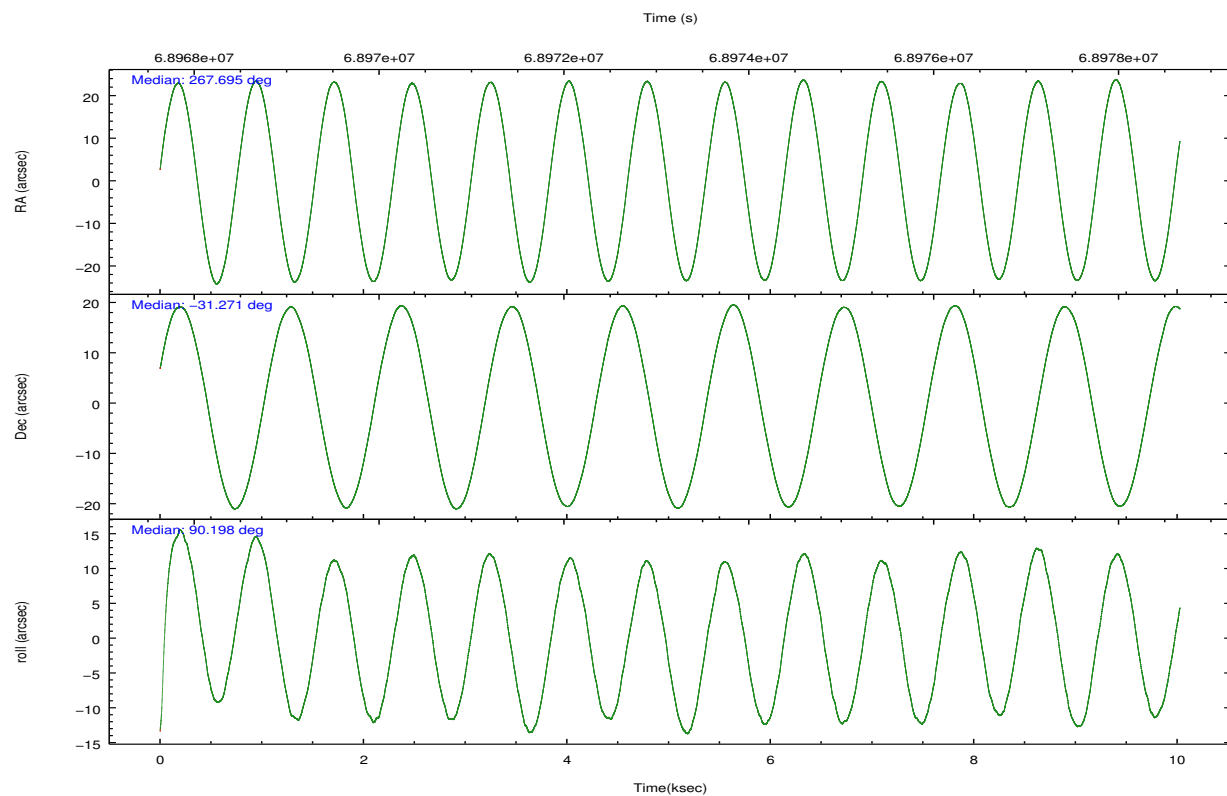
2.2 Compared Parameters

Parameter	Planned	Actual
Instrument	HRC	HRC
Detector	HRC-I	HRC-I
Grating	NONE	NONE
Data mode	OBSERVING	OBSERVING
Observation mode	POINTING	POINTING
[deg] Pointing RA	267.711754	267.6953699085485
[deg] Pointing Dec	-31.294556	-31.27096381712351
[deg] Pointing Roll	90.305119	90.20111137786198
[mm] SIM focus pos	-1.040293	-1.038866356238299
[mm] SIM defocus	0	0.001426264420575141
[mm] SIM translation stage pos	126.985494	126.9854943052878
[mm] SIM translation stage offset	0	-5.413686238853188e-06
[s] Observation start time (MET)	68968625.184000	68967884.278914
Observation start date	2000-03-09T05:56:01	2000-03-09T05:44:44
[s] Observation end time (MET)	68976125.184000	68978476.11680099
Observation end date	2000-03-09T08:01:01	2000-03-09T08:41:16

Parameter	Planned	Actual
Obspar format version number	7	7
Obspar file type	PREDICTED	ACTUAL
Obspar update status	NONE	UPDATED

2.3 Aspect



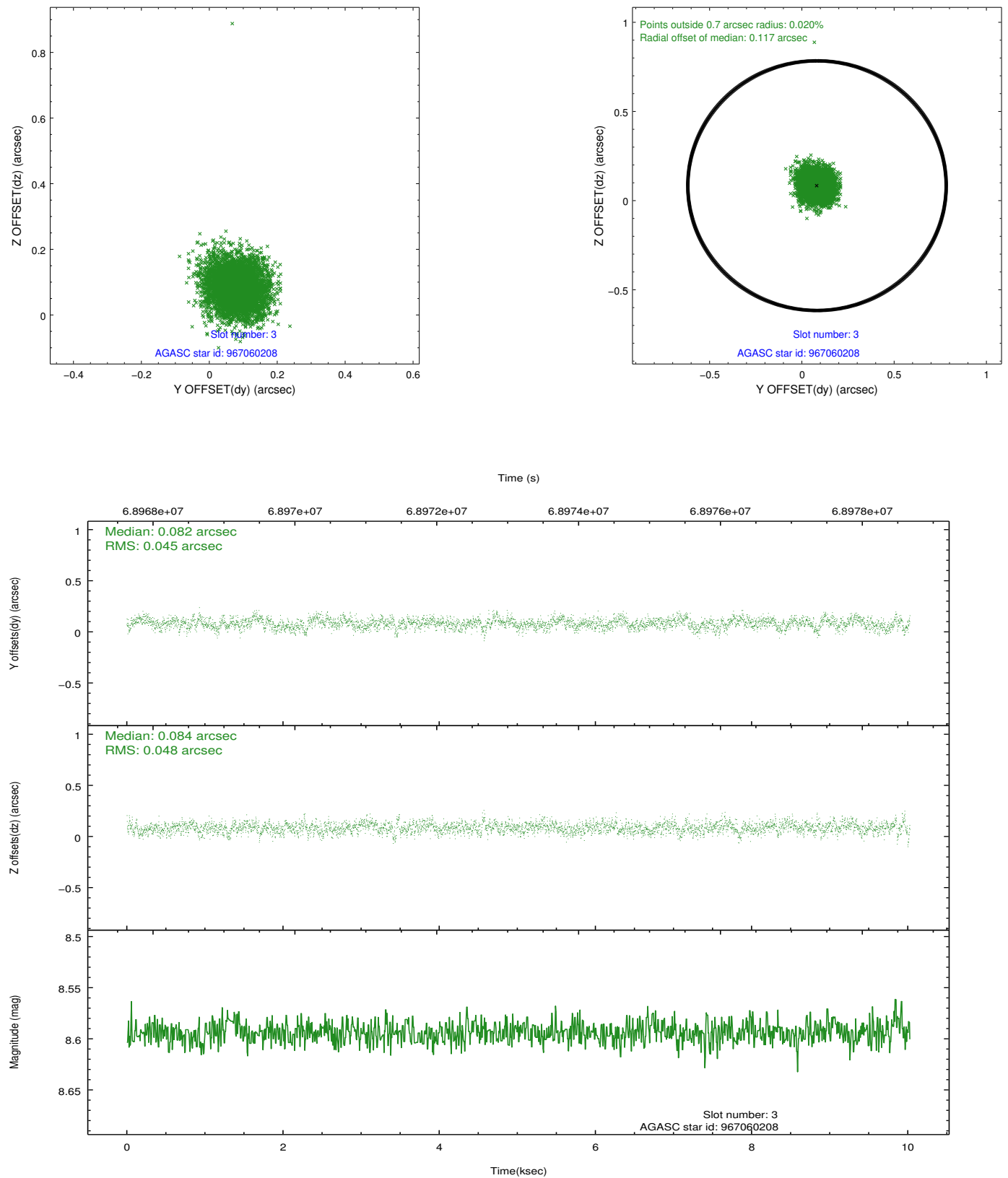


Slot Statistics

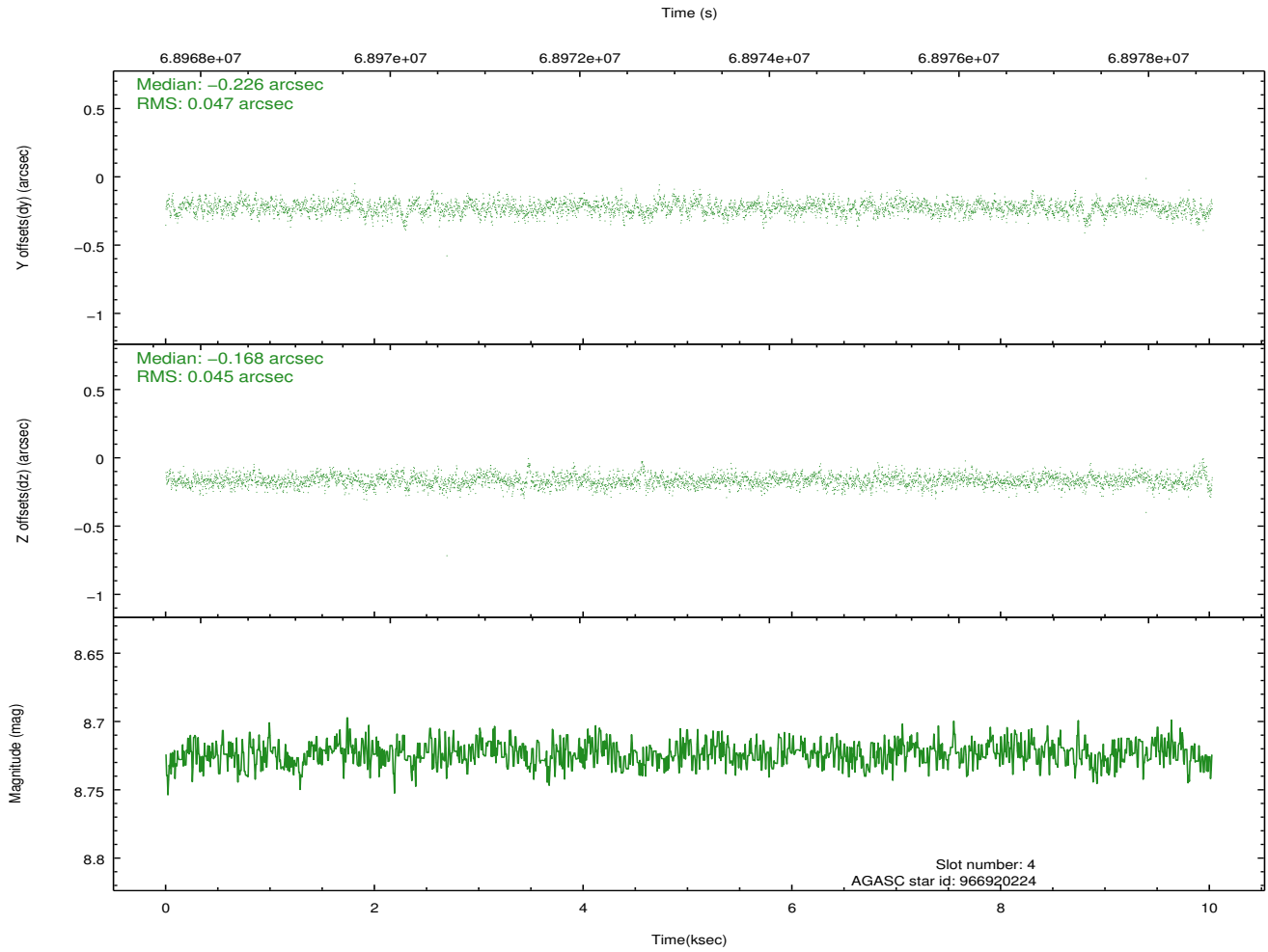
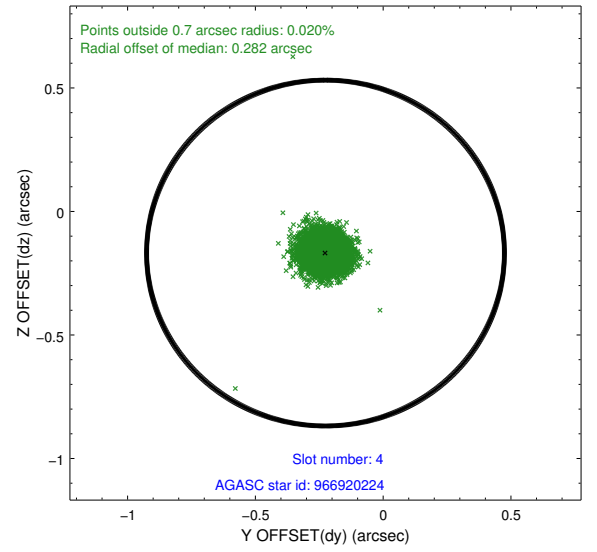
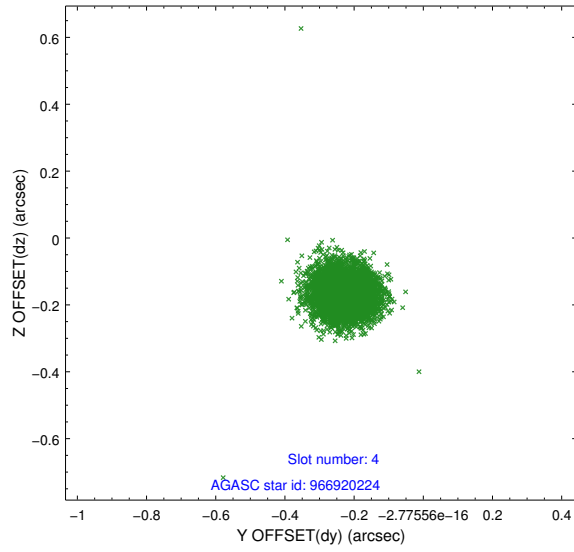
slot	status	id	mag	n_pts	med_dy	med_dz	dr1	dr2	ra	dec	mean_y	mean_z
0	FID	HRC-I-1	6.95	2446	0.063	-0.004	0.007	0.012	0.000000	0.000000	-756.60	-1290.26
1	FID	HRC-I-3	7.04	2446	0.033	-0.027	0.007	0.011	0.000000	0.000000	-1185.40	1013.76
2	FID	HRC-I-4	6.98	2446	0.018	-0.059	0.006	0.010	0.000000	0.000000	1285.69	1012.23
3	GUIDE	967060208	8.59	4892	0.082	0.084	0.069	0.115	267.770250	-30.970101	1165.84	-186.46
4	GUIDE	966920224	8.72	4891	-0.226	-0.168	0.067	0.109	267.399434	-31.055624	862.60	958.63
5	GUIDE	967058096	8.97	4889	0.088	0.129	0.081	0.130	268.189696	-31.635449	-1239.14	-1457.93
6	GUIDE	966921144	9.67	4888	-0.109	-0.196	0.123	0.237	267.164244	-31.014285	1012.08	1683.63
7	GUIDE	967057144	9.60	4884	0.162	0.154	0.089	0.148	267.909728	-31.707017	-1489.50	-597.84

2.4 Star Slots

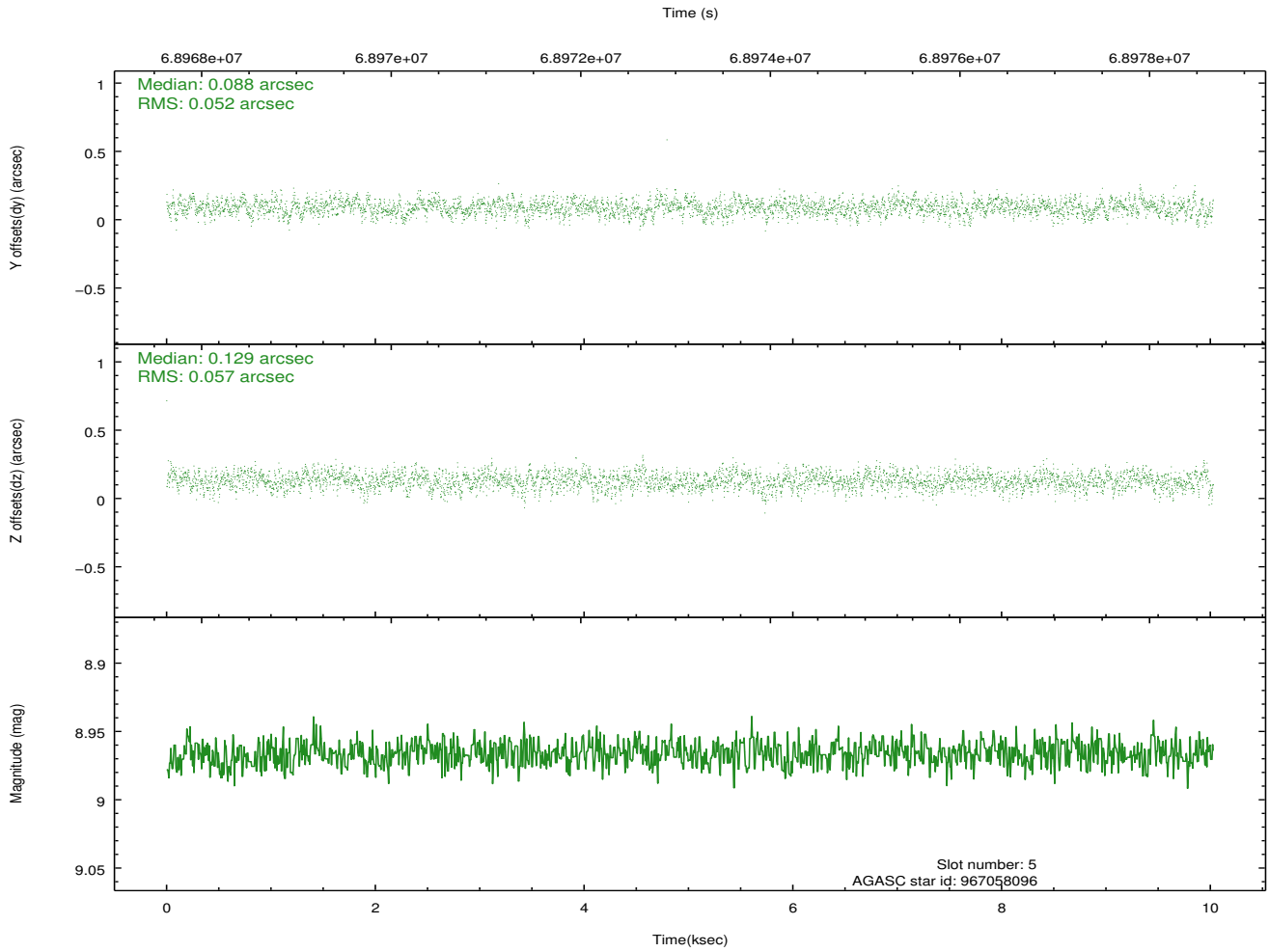
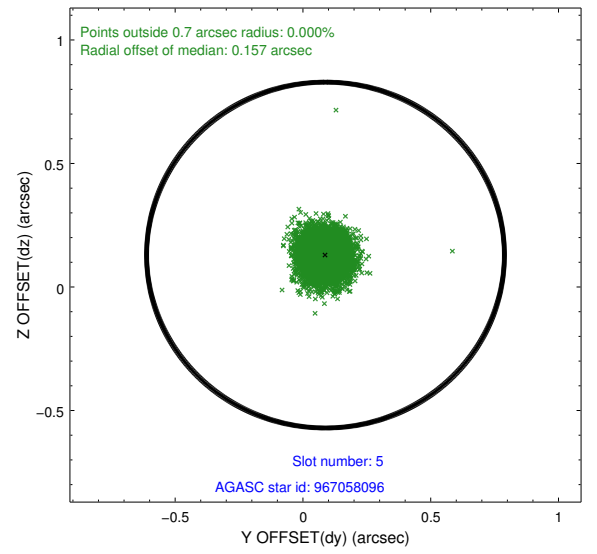
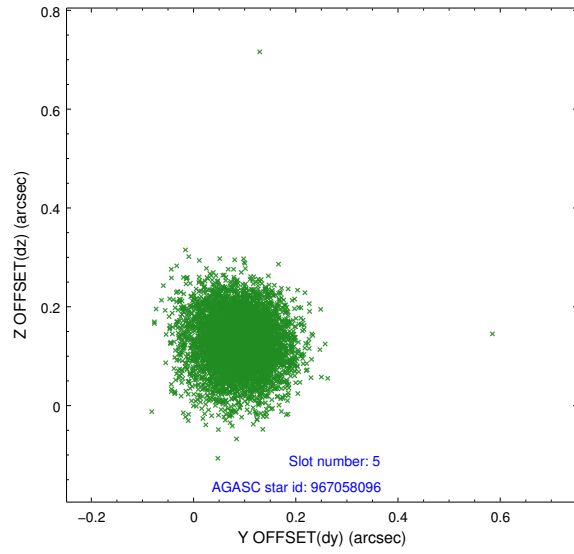
2.4.1 Slot 3



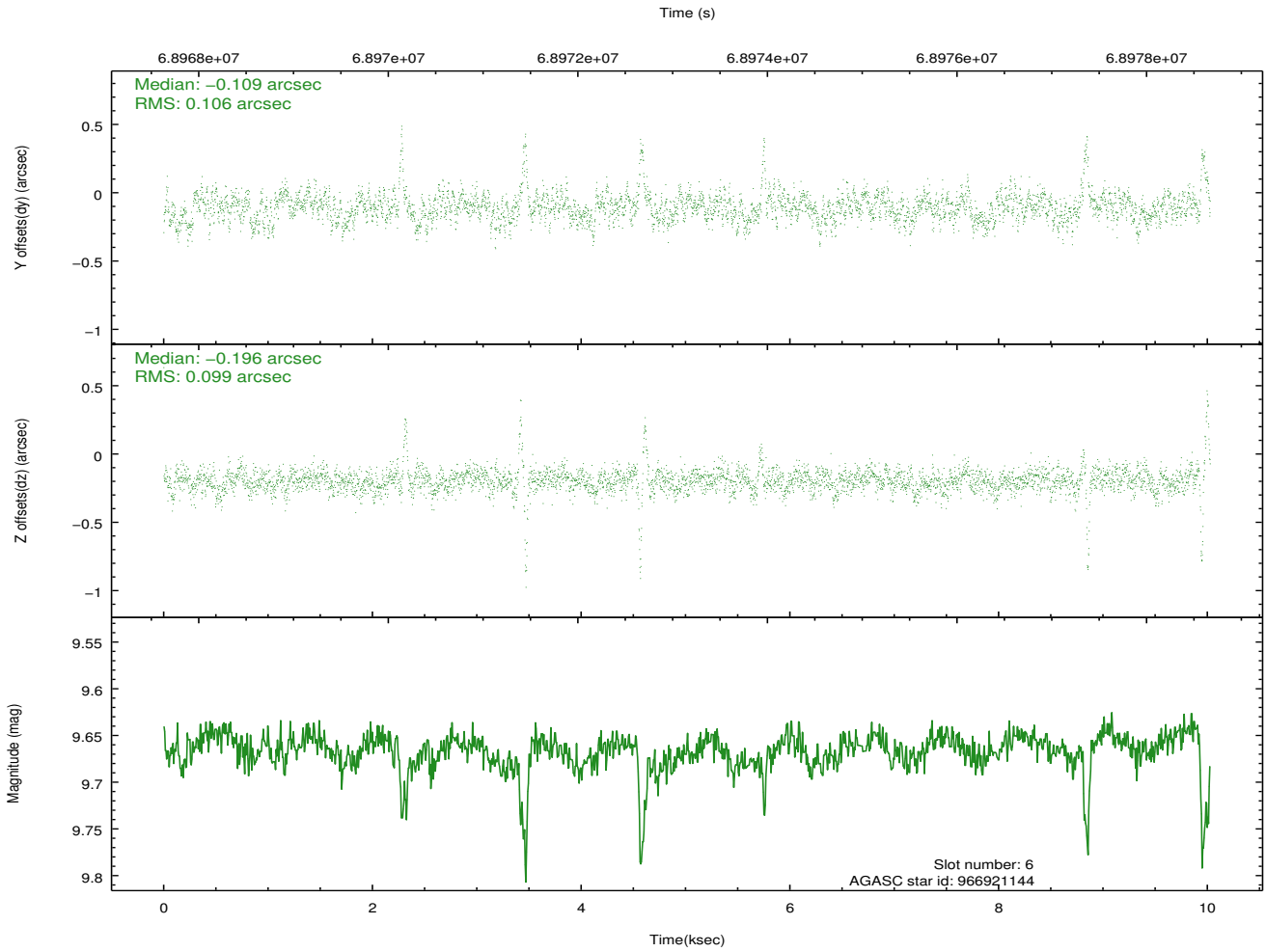
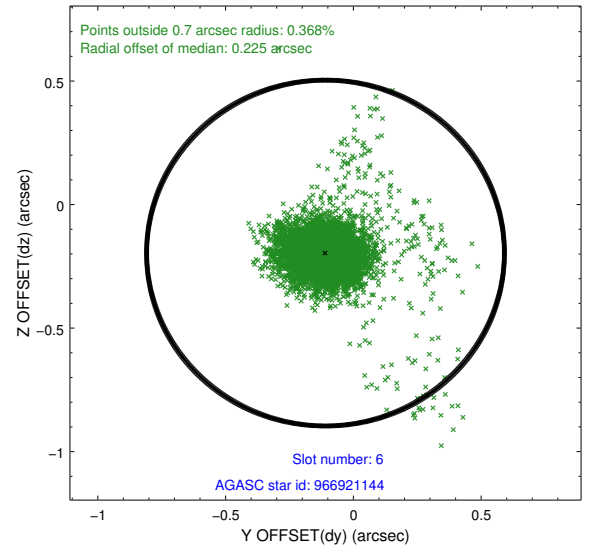
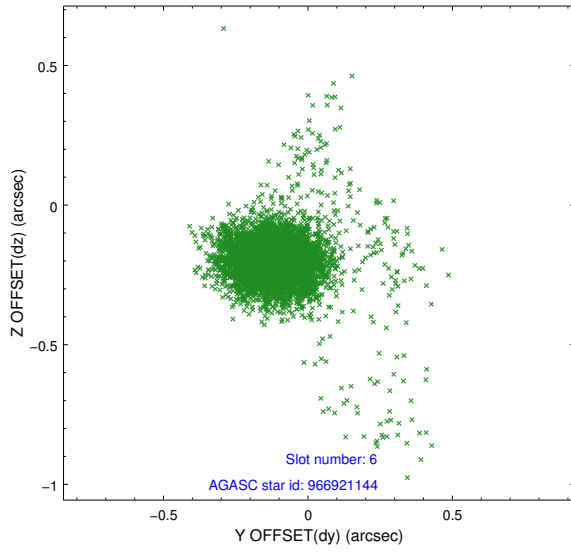
2.4.2 Slot 4



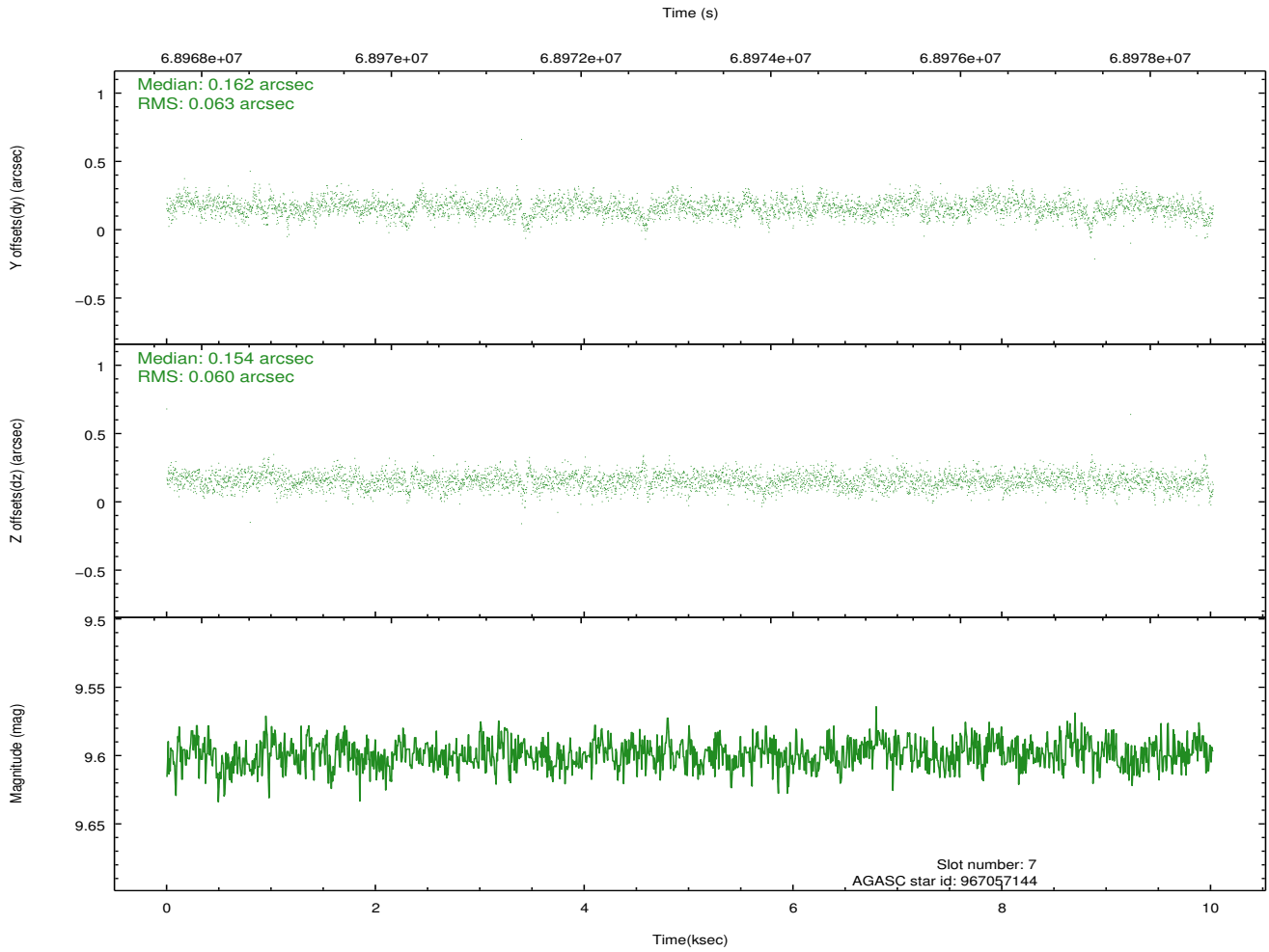
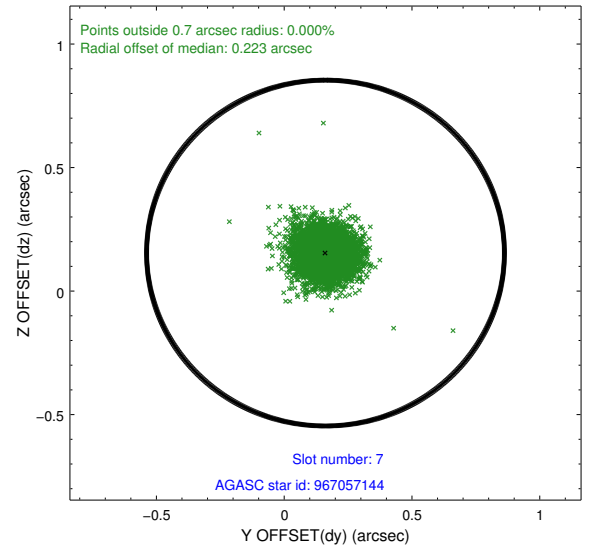
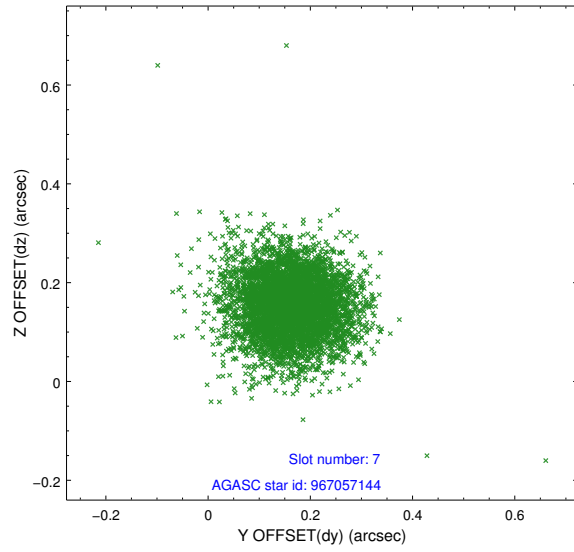
2.4.3 Slot 5



2.4.4 Slot 6

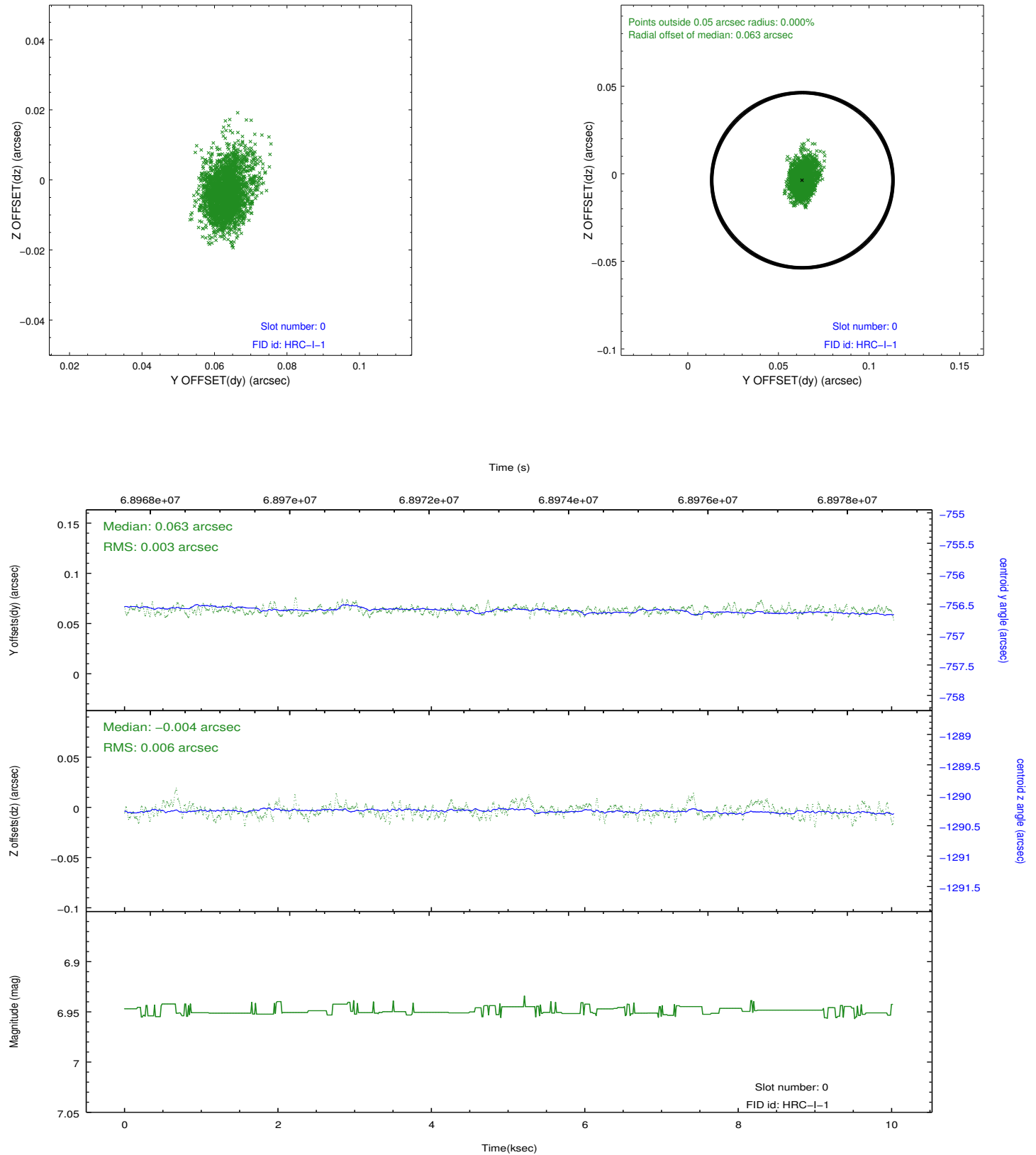


2.4.5 Slot 7

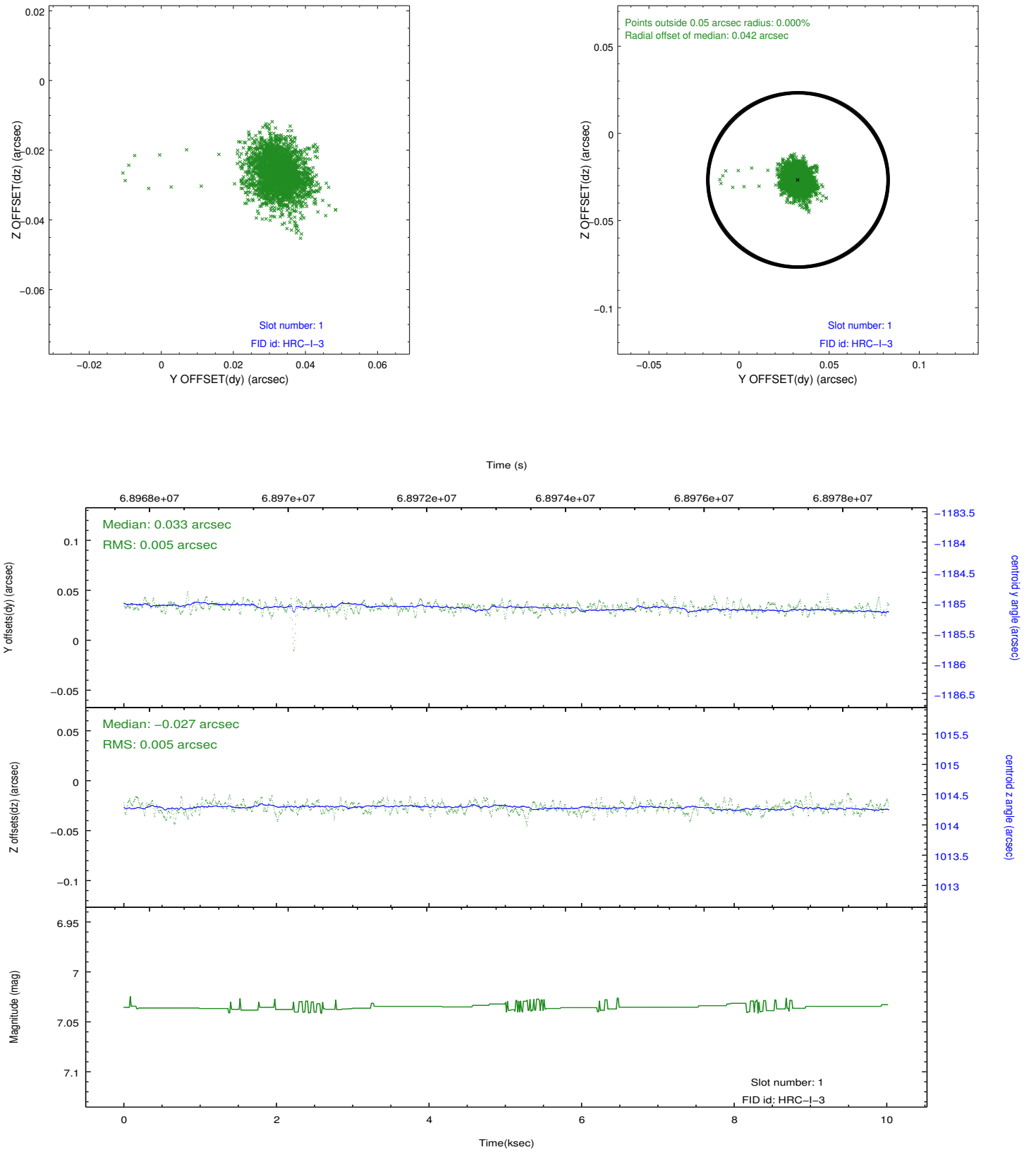


2.5 FID Slots

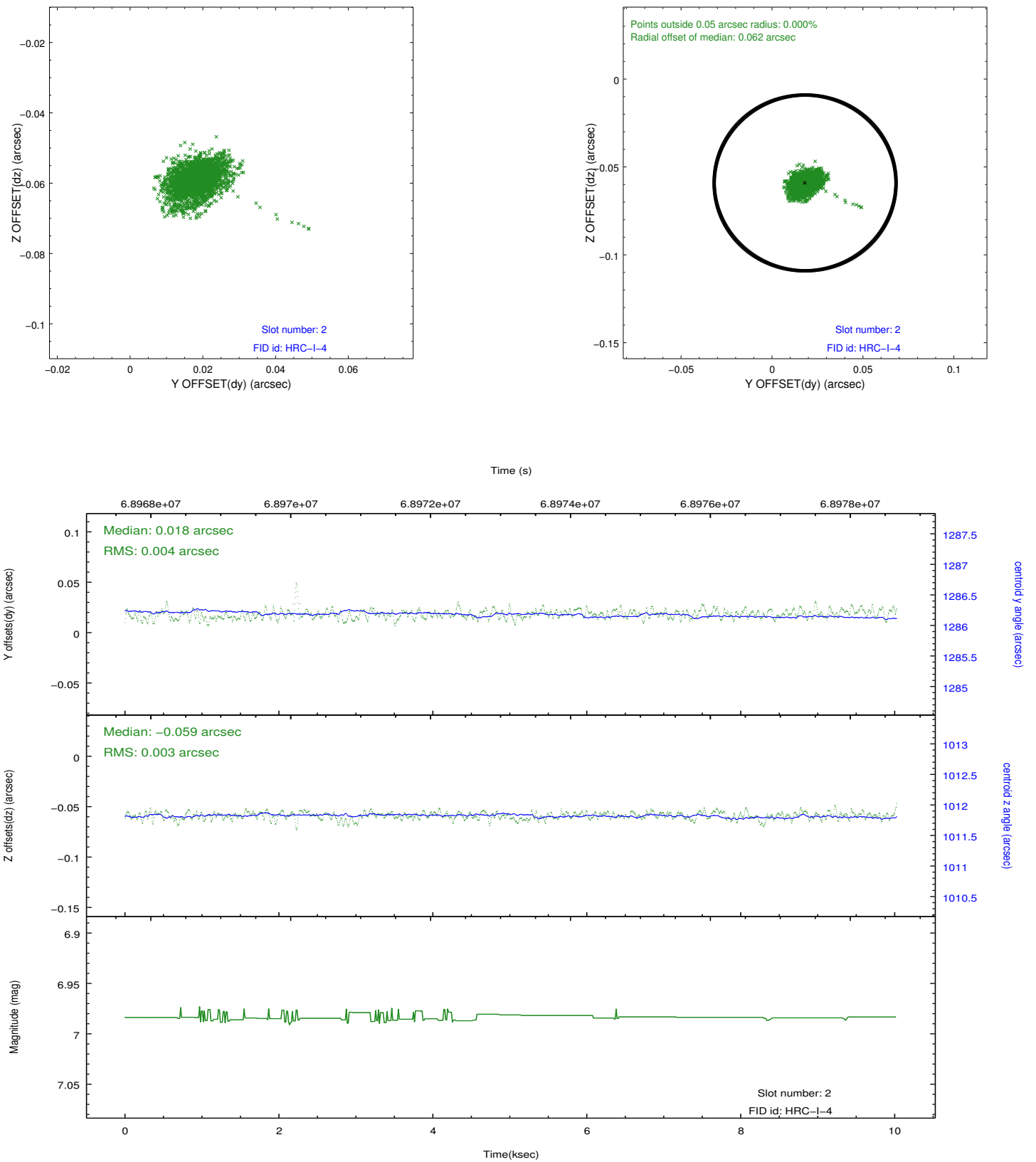
2.5.1 Slot 0



2.5.2 Slot 1



2.5.3 Slot 2



A Summary

A.1 Status

V&V Scientist	Jen Lauer
V&V Date (YYYY-MM-DD)	2012.08.24
V&V Edition	1
V&V Disposition and Status	OK
V&V Charge Time	10.023

A.2 Comments