

V&V Reference Report

L2 ASCDS Version : 8.4.3.1

Observation 6920 - L2 Version 2
Chandra X-Ray Center

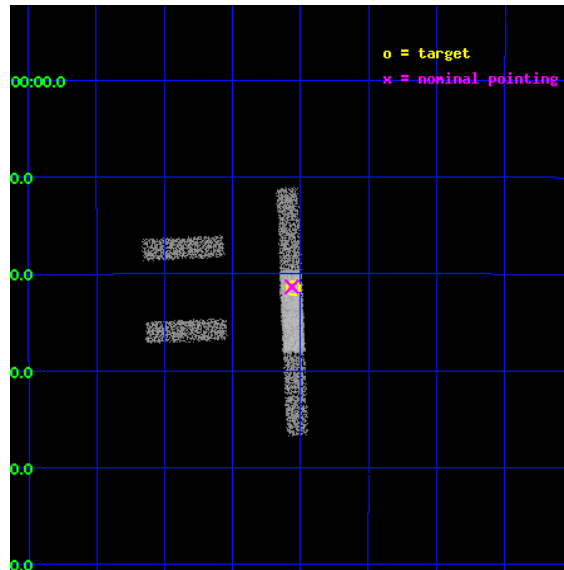
L2 Processing Date : Apr 12 2012

Contents

1	Front	2
2	OBI	3
2.1	OBI	3
2.1.1	Images	3
2.1.2	Bias	3
2.1.3	Parameters	4
2.1.4	Events	4
2.2	Compared Parameters	5
2.3	Aspect	6
2.4	Star Slots	9
2.4.1	Slot 3	9
2.4.2	Slot 4	10
2.4.3	Slot 5	11
2.4.4	Slot 6	12
2.4.5	Slot 7	13
2.5	FID Slots	14
2.5.1	Slot 0	14
2.5.2	Slot 1	15
2.5.3	Slot 2	16
A	Summary	17
A.1	Status	17
A.2	Comments	17

1 Front

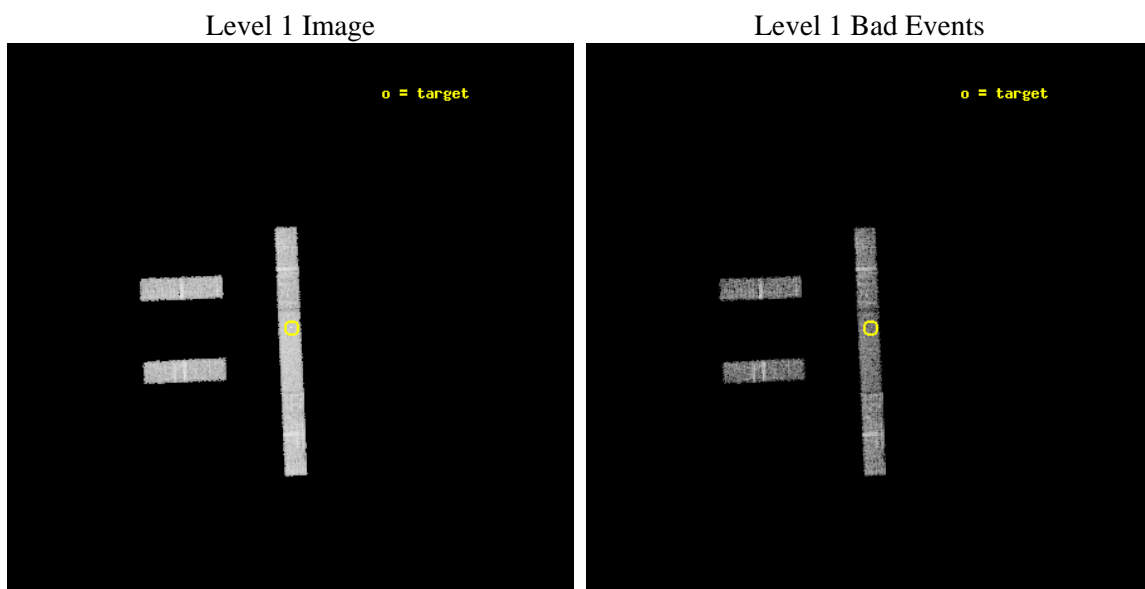
seq_num	701335	Sequence number
obs_id	6920	Observation id
title	Studying the Spatial Structures of the Optical and X-ray Emission Regions of Quasars by Monitoring Microlensing Events	Proposal title
observer	Professor Gordon Garmire	Principal investigator
object	HE 1104-1805	Source name
dtcycle	0	
cycle	P	events from which exps? Prim/Second/Both
ra_targ	166.639167	Observer's specified target RA [deg]
dec_targ	-18.356722	Observer's specified target Dec [deg]
ra_nom	166.64096030274	Nominal RA [deg]
dec_nom	-18.355547190524	Nominal Dec [deg]
roll_nom	87.582175882708	Nominal Roll [deg]
revision	2	Processing version of data
ontime	5212.0	Sum of GTIs [s]
livetime	5006.5319296089	Livetime [s]
ontime2	5212.0	Sum of GTIs [s]
ontime3	5212.0	Sum of GTIs [s]
ontime6	5212.0	Sum of GTIs [s]
ontime7	5212.0	Sum of GTIs [s]
ontime8	5212.0	Sum of GTIs [s]
l2events	14137	Number of level 2 events



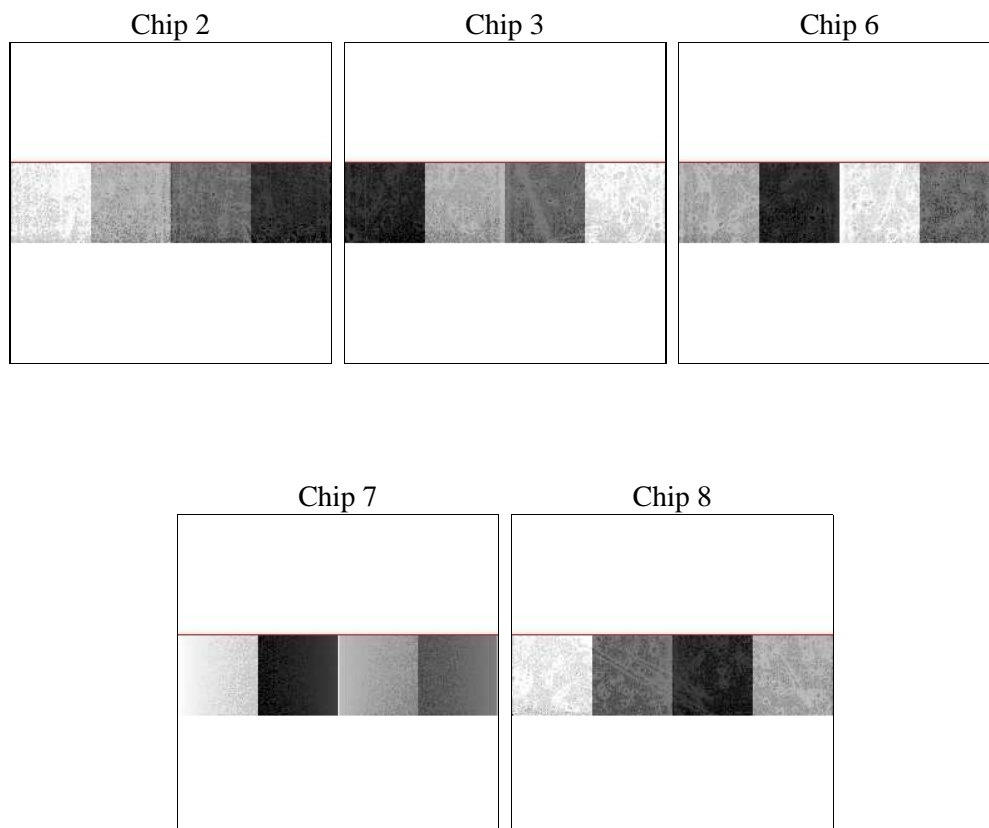
2 OBI

2.1 OBI

2.1.1 Images



2.1.2 Bias



2.1.3 Parameters

obi_num	0	Obi number	sched_exp_time	5054.983000	[s] Scheduled observation exposure time
ascdsver	8.4.3.1	Processing system revision	ontime	5212.0	Sum of GTIs [s]
caldsver	4.4.9	 	ontime2	5212.0	Sum of GTIs [s]
date	2012-04-12T22:44:24	Date and time of file creation	ontime3	5212.0	Sum of GTIs [s]
revision	2	Processing version of data	ontime6	5212.0	Sum of GTIs [s]
			ontime7	5212.0	Sum of GTIs [s]
			ontime8	5212.0	Sum of GTIs [s]
			l1events	104932	Number of level 1 events

2.1.4 Events

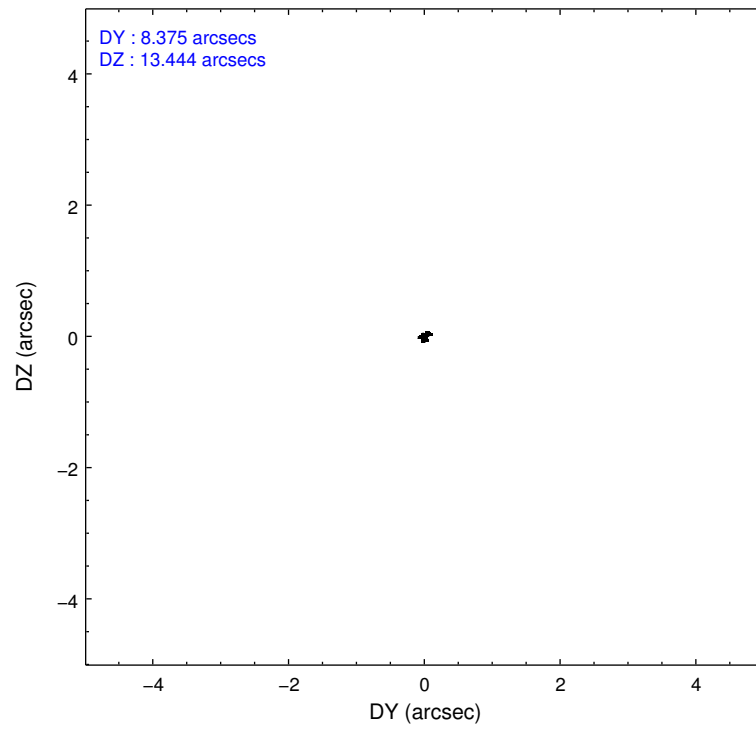
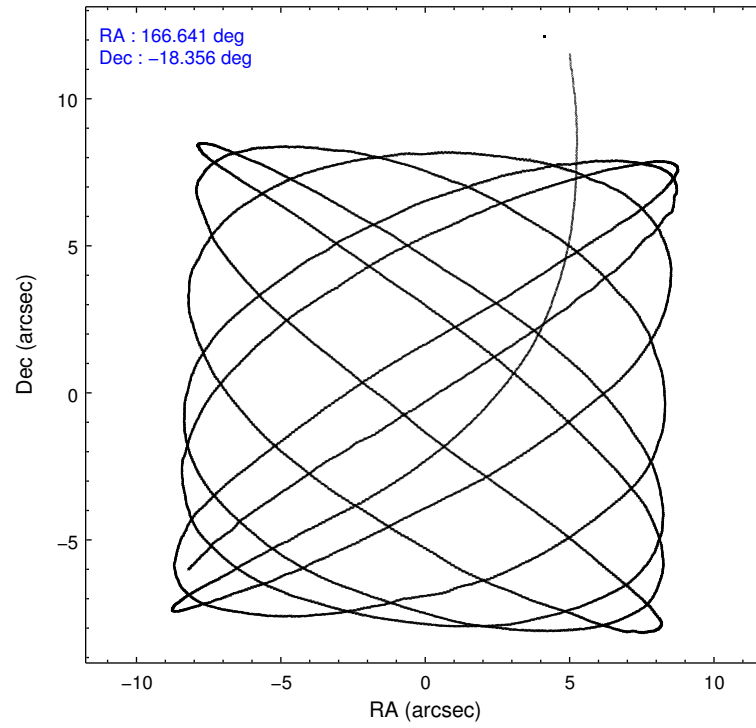
	ccd 2	ccd 3	ccd 6	ccd 7	ccd 8
level 1 events	17636	17422	19551	24662	25661
rejected events	15819	15764	17723	16188	21506
rejected %	89%	90%	90%	65%	83%

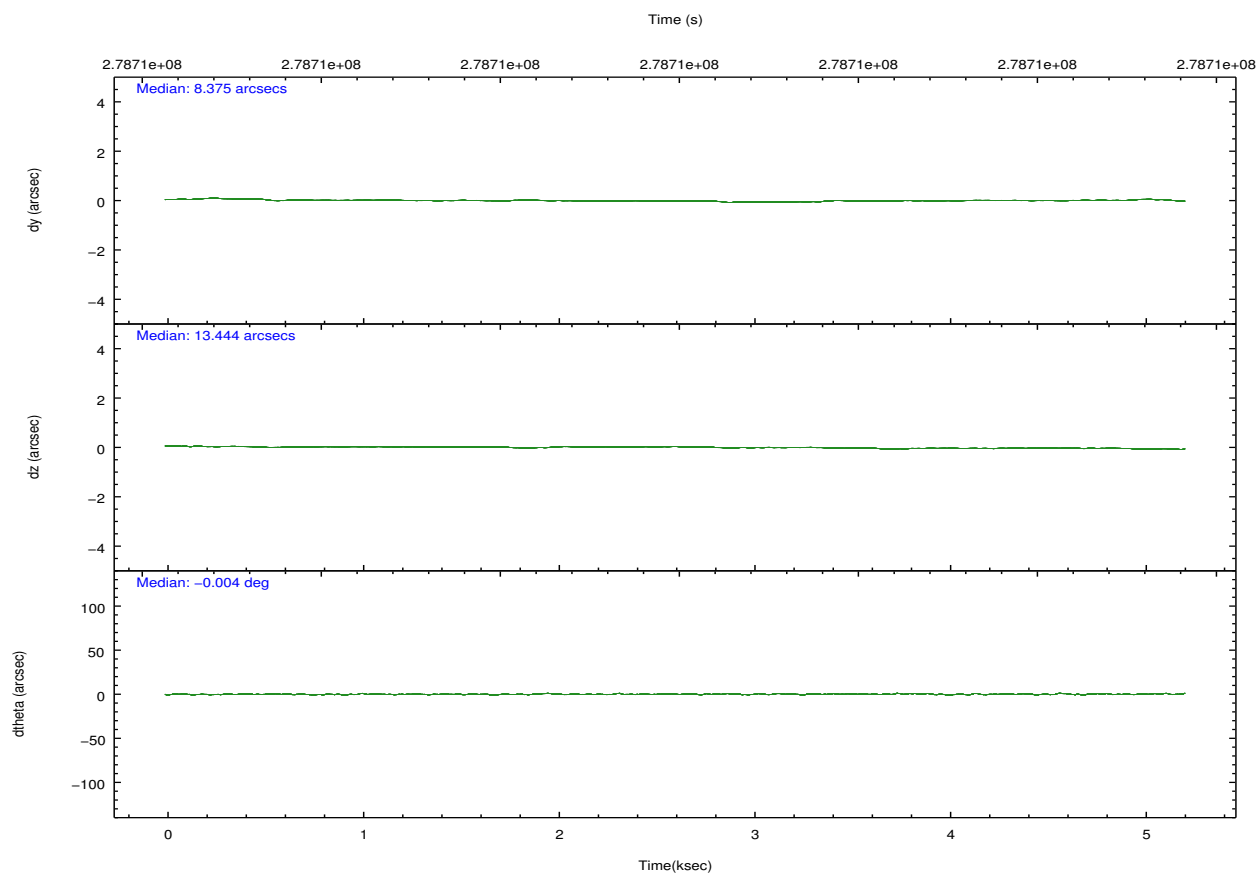
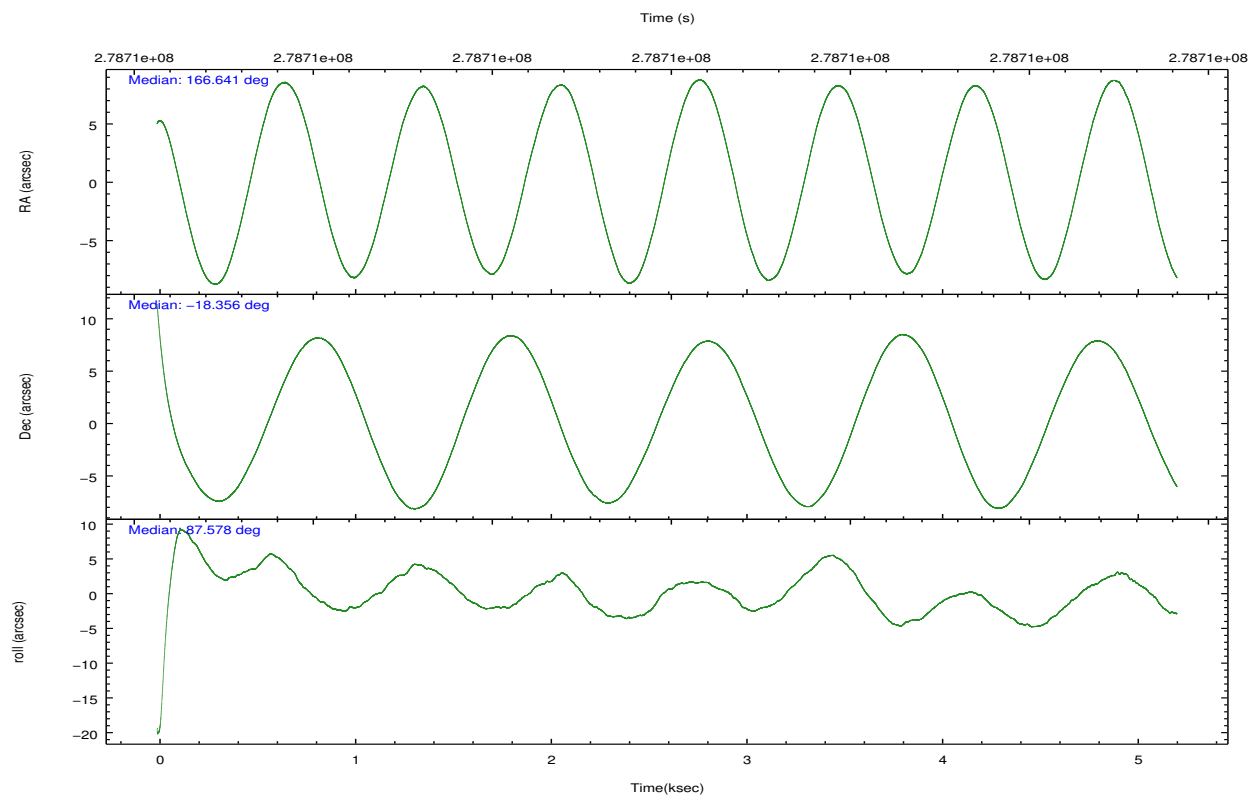
	ccd 2	ccd 3	ccd 6	ccd 7	ccd 8
grade 0 events	918	941	1030	1219	1656
	5%	5%	5%	4%	6%
grade 1 events	6	2	5	22	9
	0%	0%	0%	0%	0%
grade 2 events	426	347	449	2302	1102
	2%	1%	2%	9%	4%
grade 3 events	330	306	301	1150	608
	1%	1%	1%	4%	2%
grade 4 events	306	278	314	1117	553
	1%	1%	1%	4%	2%
grade 5 events	566	686	751	2205	970
	3%	3%	3%	8%	3%
grade 6 events	333	305	392	5722	1535
	1%	1%	2%	23%	5%
grade 7 events	14751	14557	16309	10925	19228
	83%	83%	83%	44%	74%

2.2 Compared Parameters

Parameter	Planned	Actual	Parameter	Planned	Actual
Instrument	ACIS	ACIS	Obspar format version number	7	7
Detector	ACIS-23678	ACIS-23678	Obspar file type	PREDICTED	ACTUAL
Grating	NONE	NONE	Obspar update status	NONE	UPDATED
Data mode	VFAINT	VFAINT	Number of optional ACIS chips dropped	0	0
Observation mode	POINTING	POINTING	On-chip summing requested	N	N
[deg] Pointing RA	166.654611	166.6409603027434	Subarray requested	CUSTOM	1/4
[deg] Pointing Dec	-18.379517	-18.35554719052439	Subarray start row	385	385
[deg] Pointing Roll	87.429942	87.58217588270762	Subarray row count	256	256
[mm] SIM focus pos	-0.684267	-0.6828225247311905	Alternating exposures requested	N	N
[mm] SIM defocus	0	0.001444936568705701	[s] Primary exposure time	0.000000	1
[mm] SIM translation stage pos	-190.132523	-190.1425803651734			
[mm] SIM translation stage offset	0	0.01005778216563158			
[s] Observation start time (MET)	278708527.184000	278706991.44253			
Observation start date	2006-10-31T19:01:02	2006-10-31T18:36:31			
[s] Observation end time (MET)	278713582.184000	278713807.18035			
Observation end date	2006-10-31T20:25:17	2006-10-31T20:30:07			
Read mode	TIMED	TIMED			

2.3 Aspect



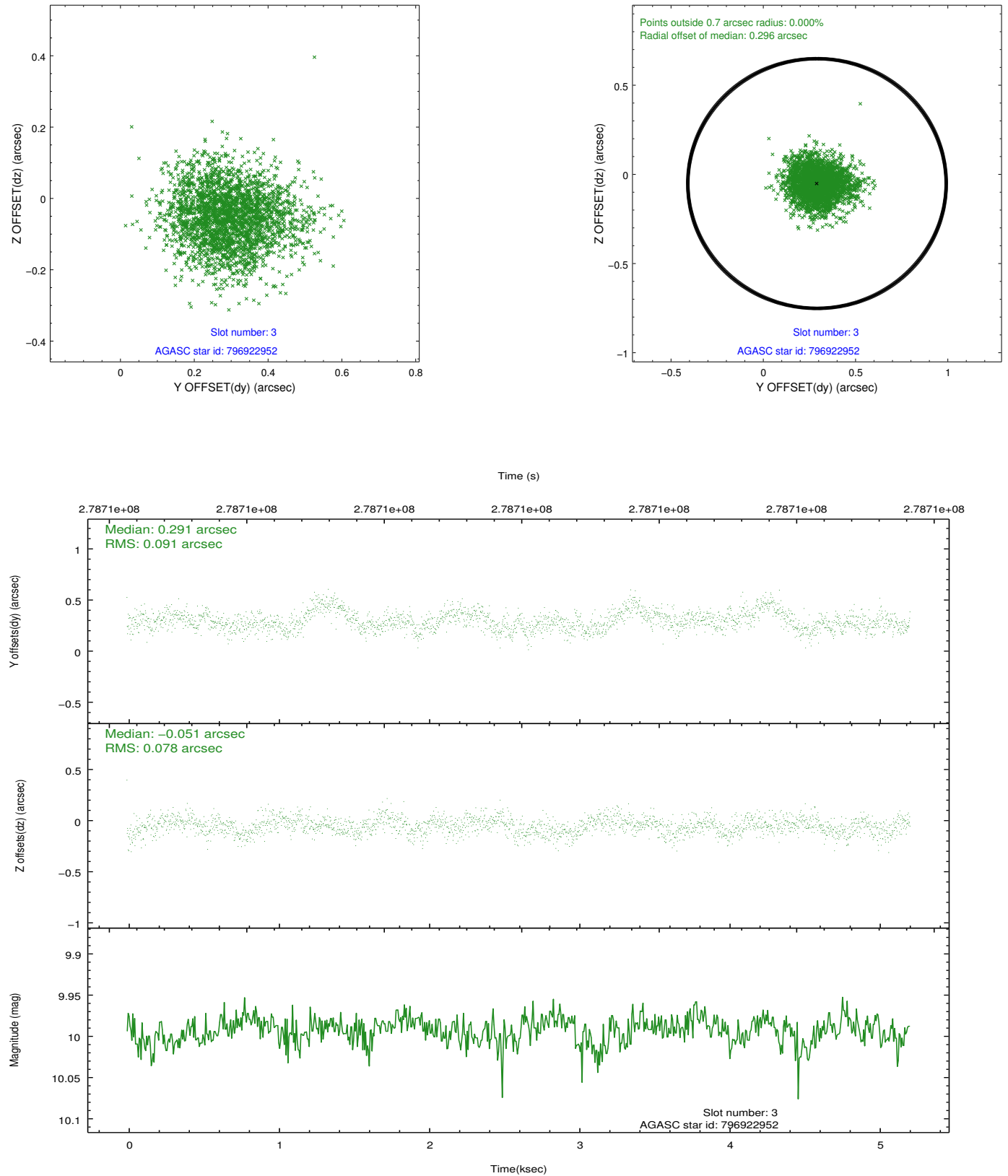


Slot Statistics

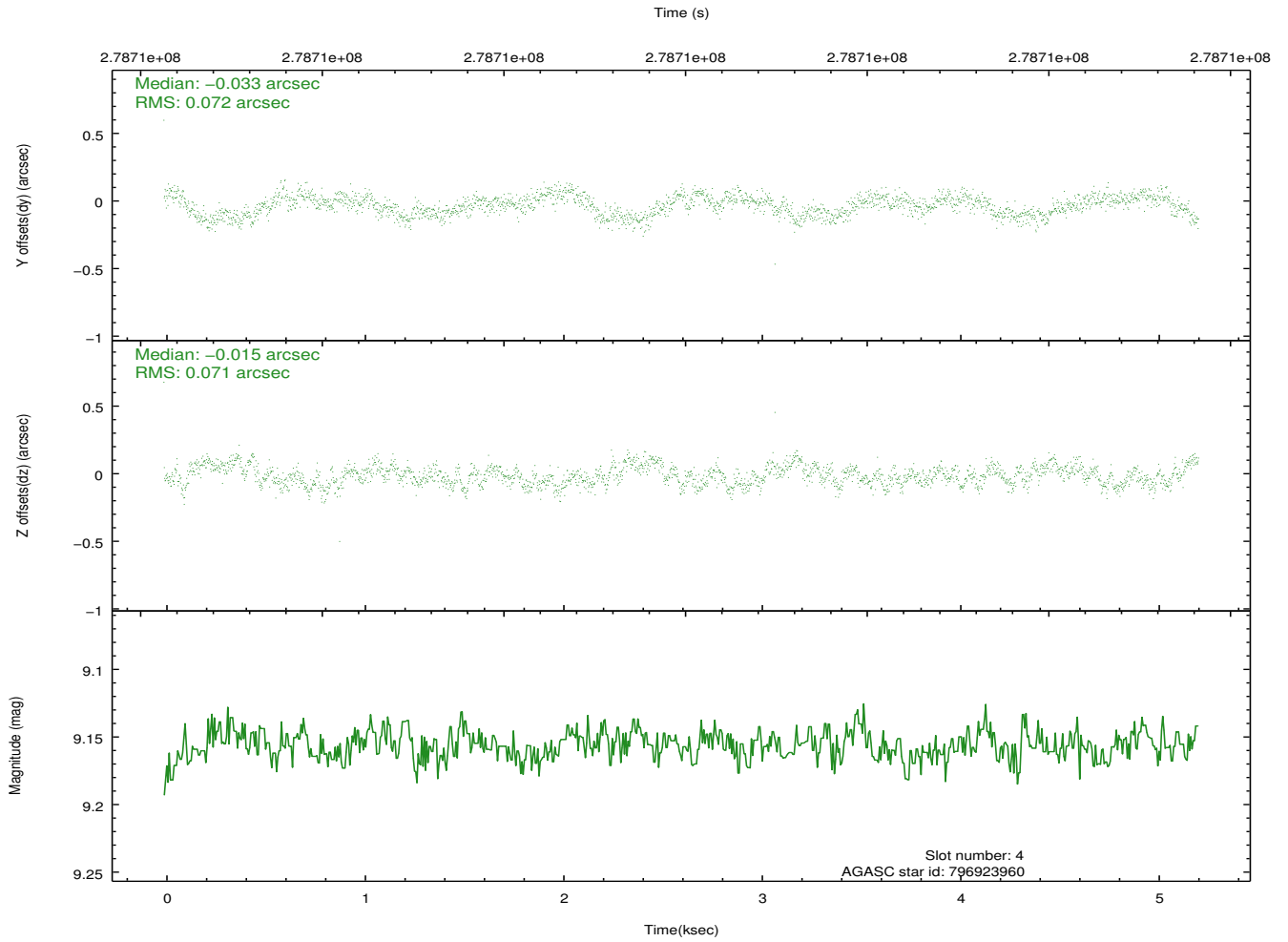
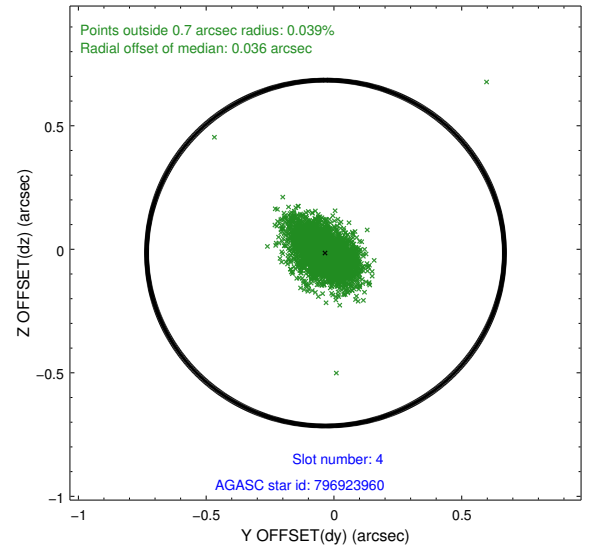
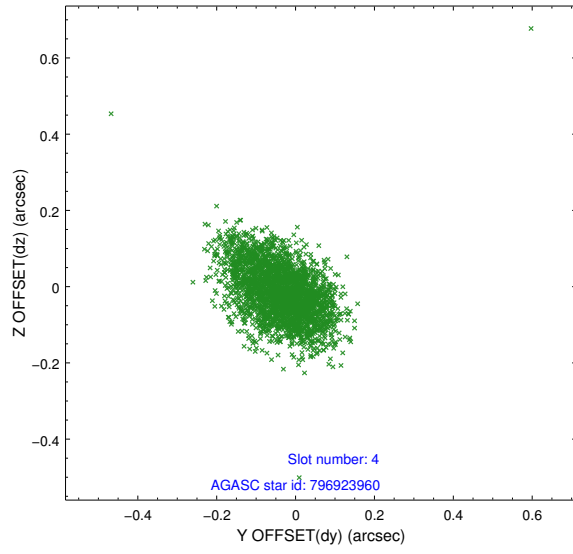
slot	status	id	mag	n_pts	med_dy	med_dz	dr1	dr2	ra	dec	mean_y	mean_z
0	FID	ACIS-S-2	7.10	1272	-0.016	-0.063	0.007	0.011	0.000000	0.000000	-761.19	-1734.79
1	FID	ACIS-S-4	7.20	1272	0.124	0.025	0.006	0.011	0.000000	0.000000	2151.71	172.57
2	FID	ACIS-S-5	7.23	1272	-0.139	0.047	0.007	0.011	0.000000	0.000000	-1812.65	167.60
3	GUIDE	796922952	9.99	2542	0.291	-0.051	0.128	0.206	166.412795	-18.656501	-1033.17	778.78
4	GUIDE	796923960	9.16	2544	-0.033	-0.015	0.106	0.175	167.114946	-18.113690	1024.76	-1530.07
5	GUIDE	796928024	9.10	2542	0.086	0.134	0.102	0.156	167.293410	-18.855839	-1618.31	-2251.65
6	GUIDE	796928784	8.44	2543	-0.226	0.174	0.078	0.125	166.853792	-17.800971	2110.46	-589.16
7	GUIDE	796930880	9.93	2522	-0.127	-0.234	0.166	0.277	166.119482	-18.145311	758.35	1866.25

2.4 Star Slots

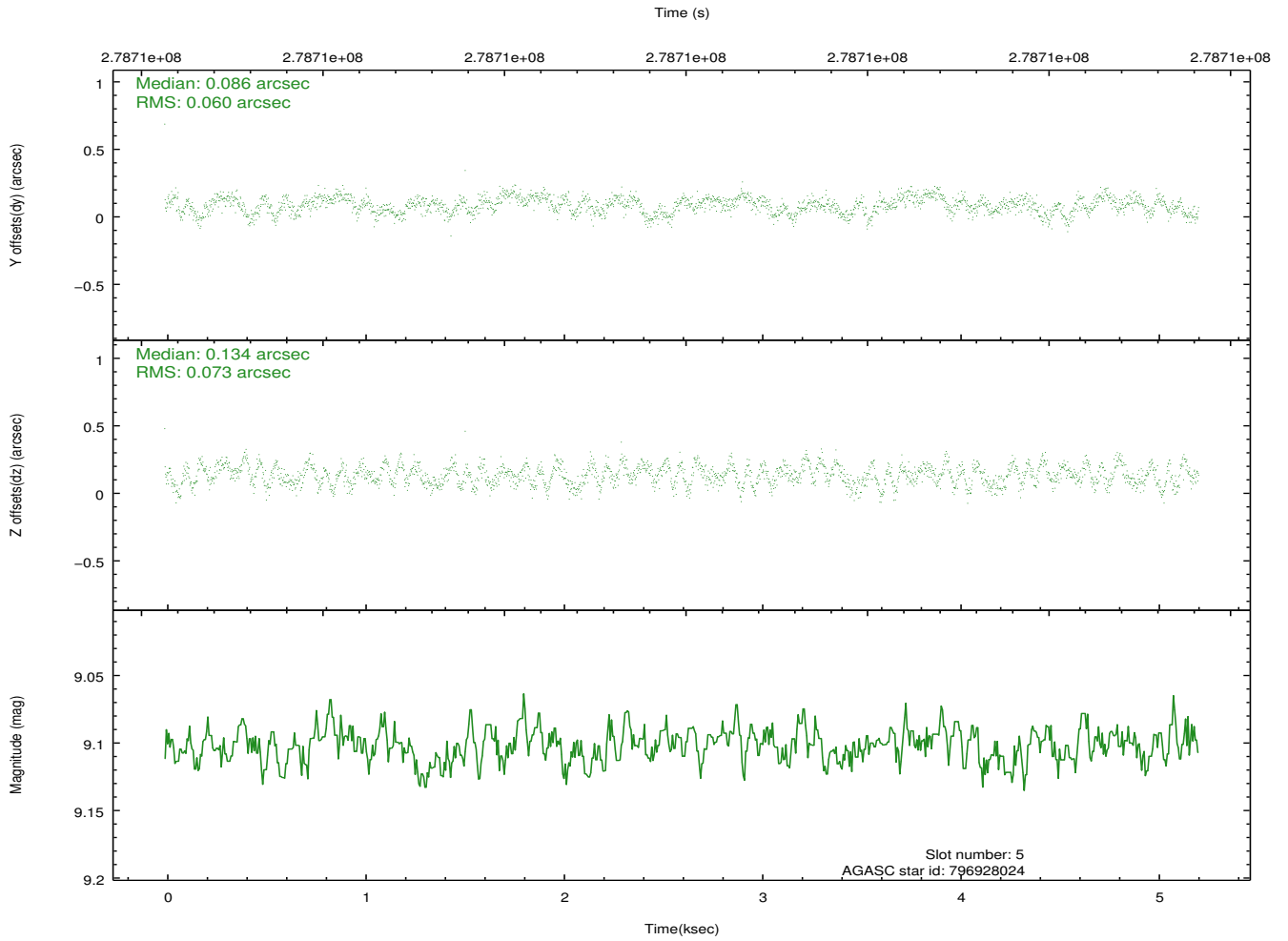
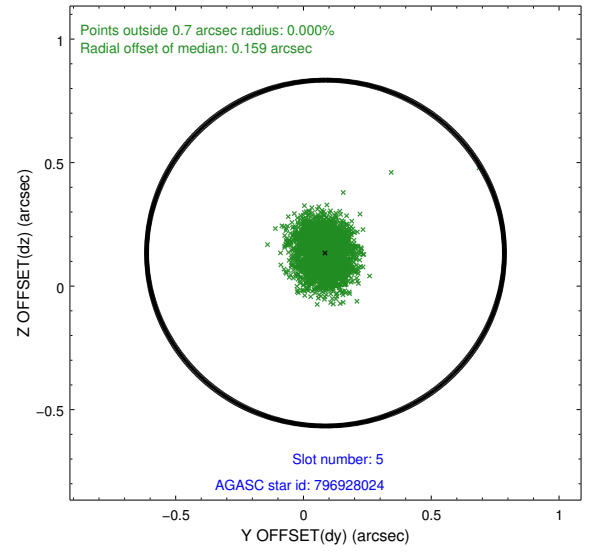
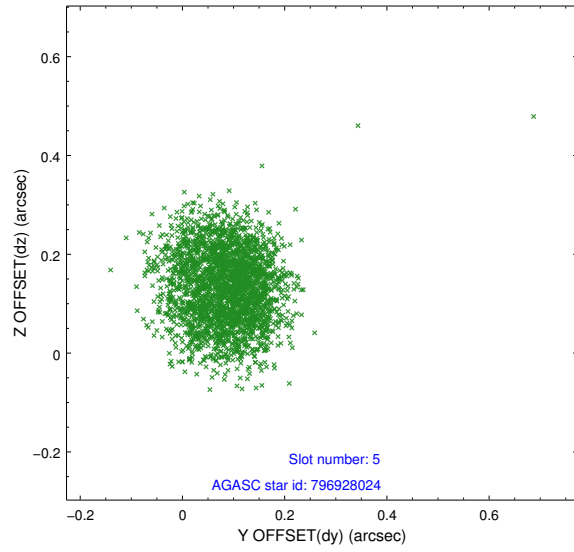
2.4.1 Slot 3



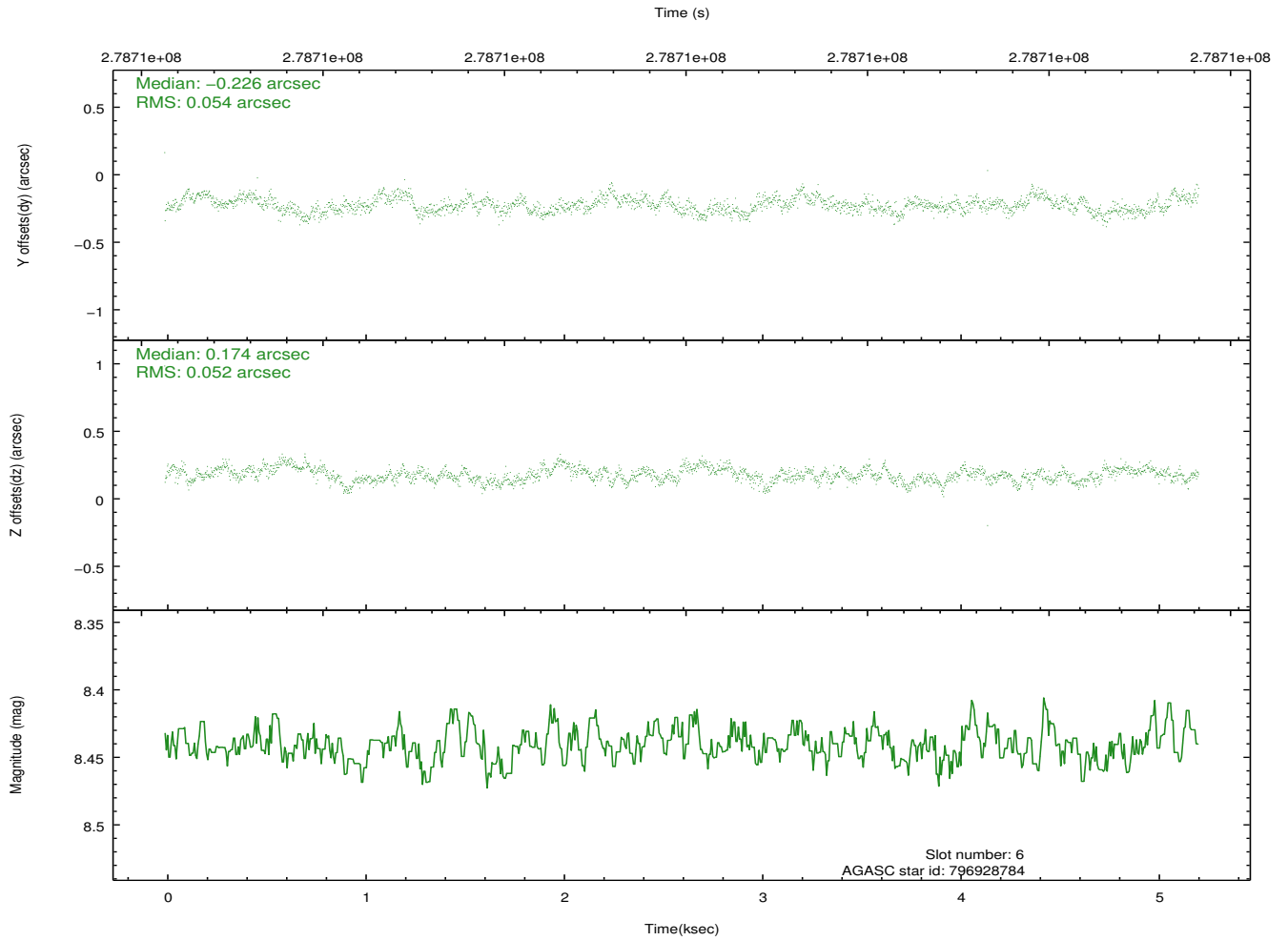
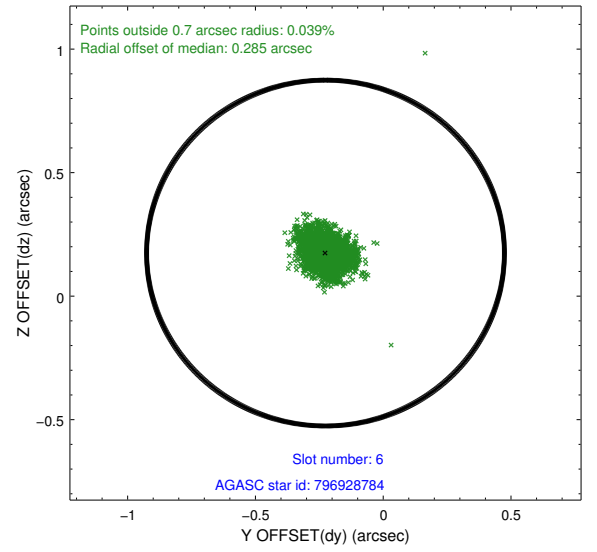
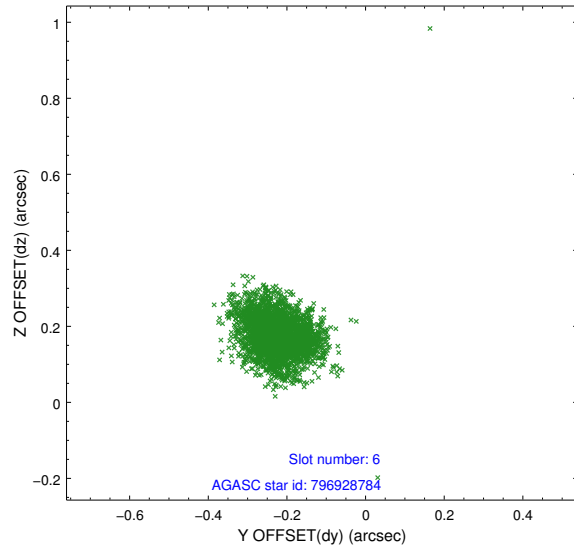
2.4.2 Slot 4



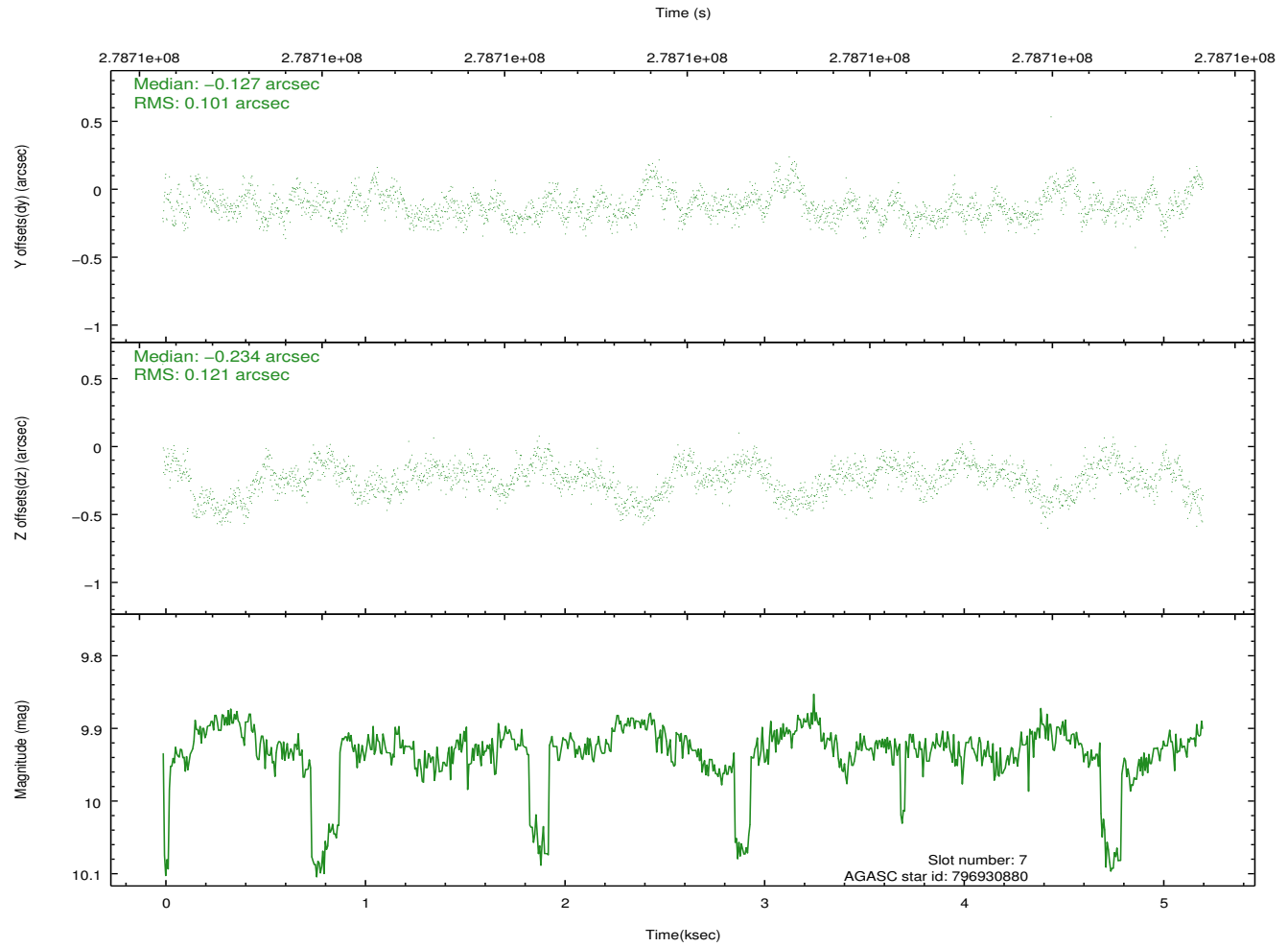
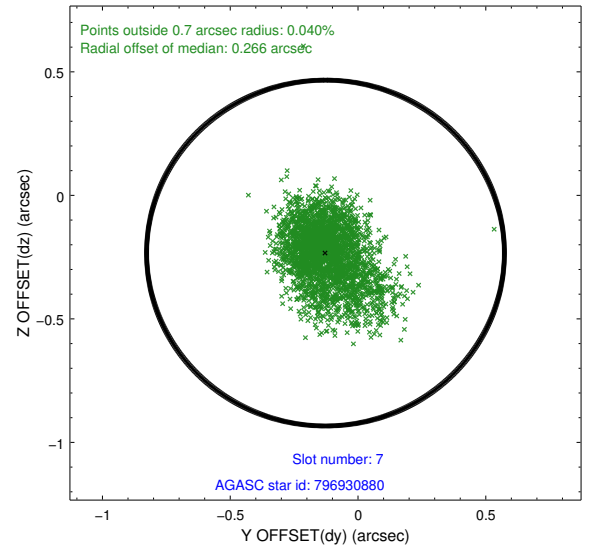
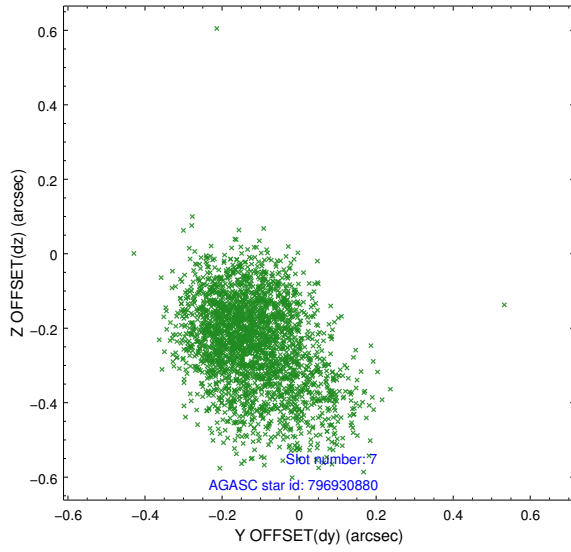
2.4.3 Slot 5



2.4.4 Slot 6

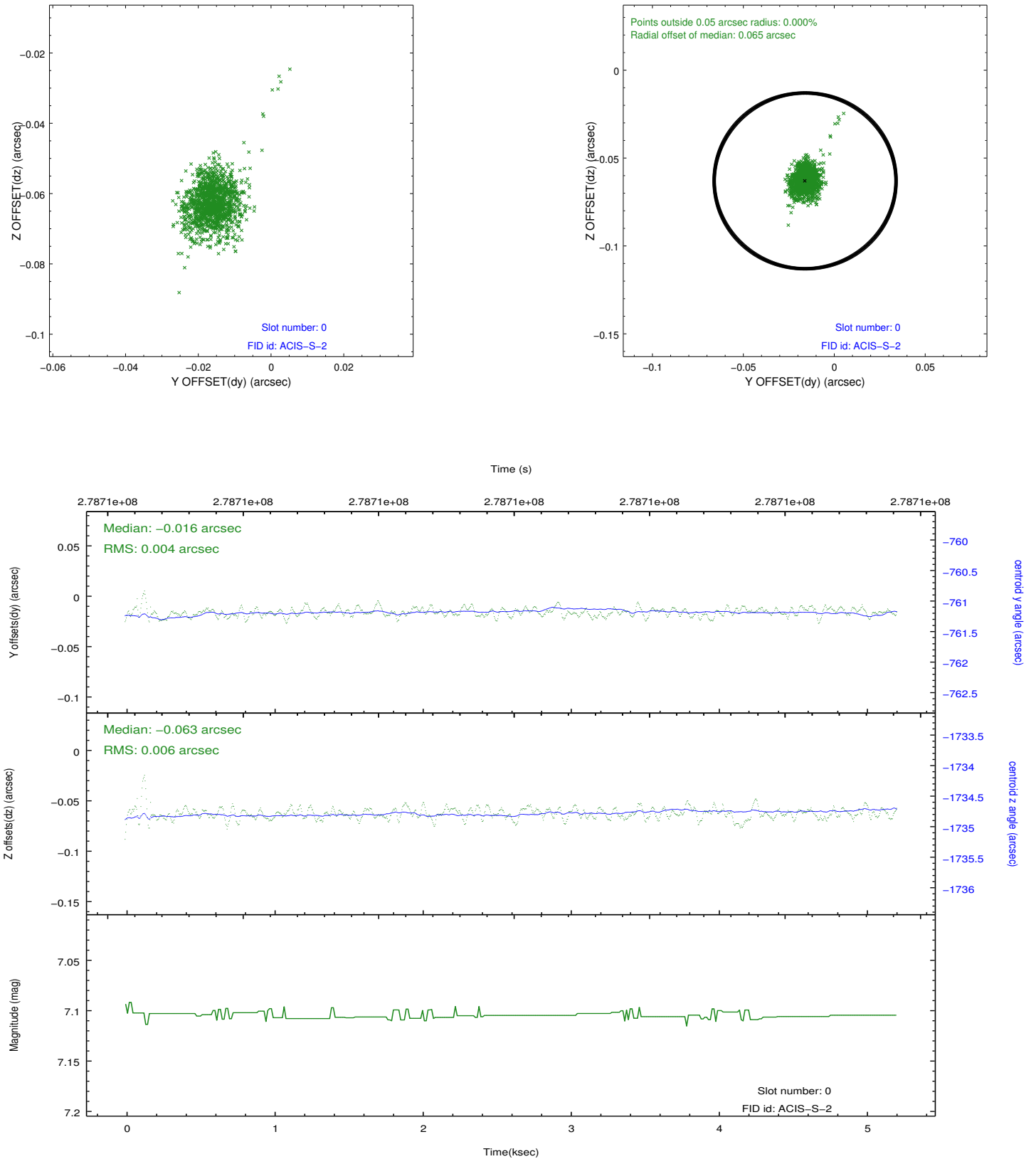


2.4.5 Slot 7

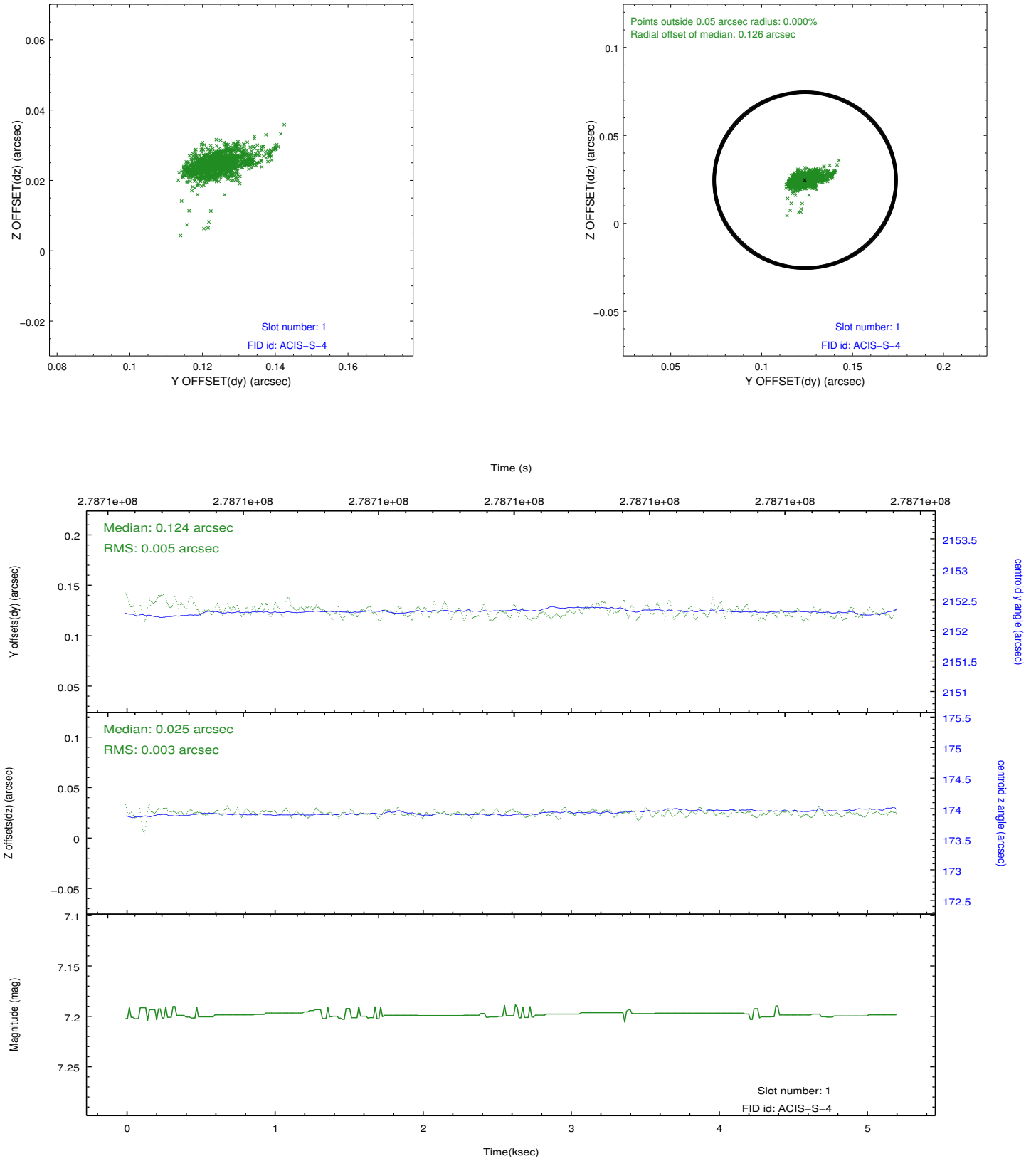


2.5 FID Slots

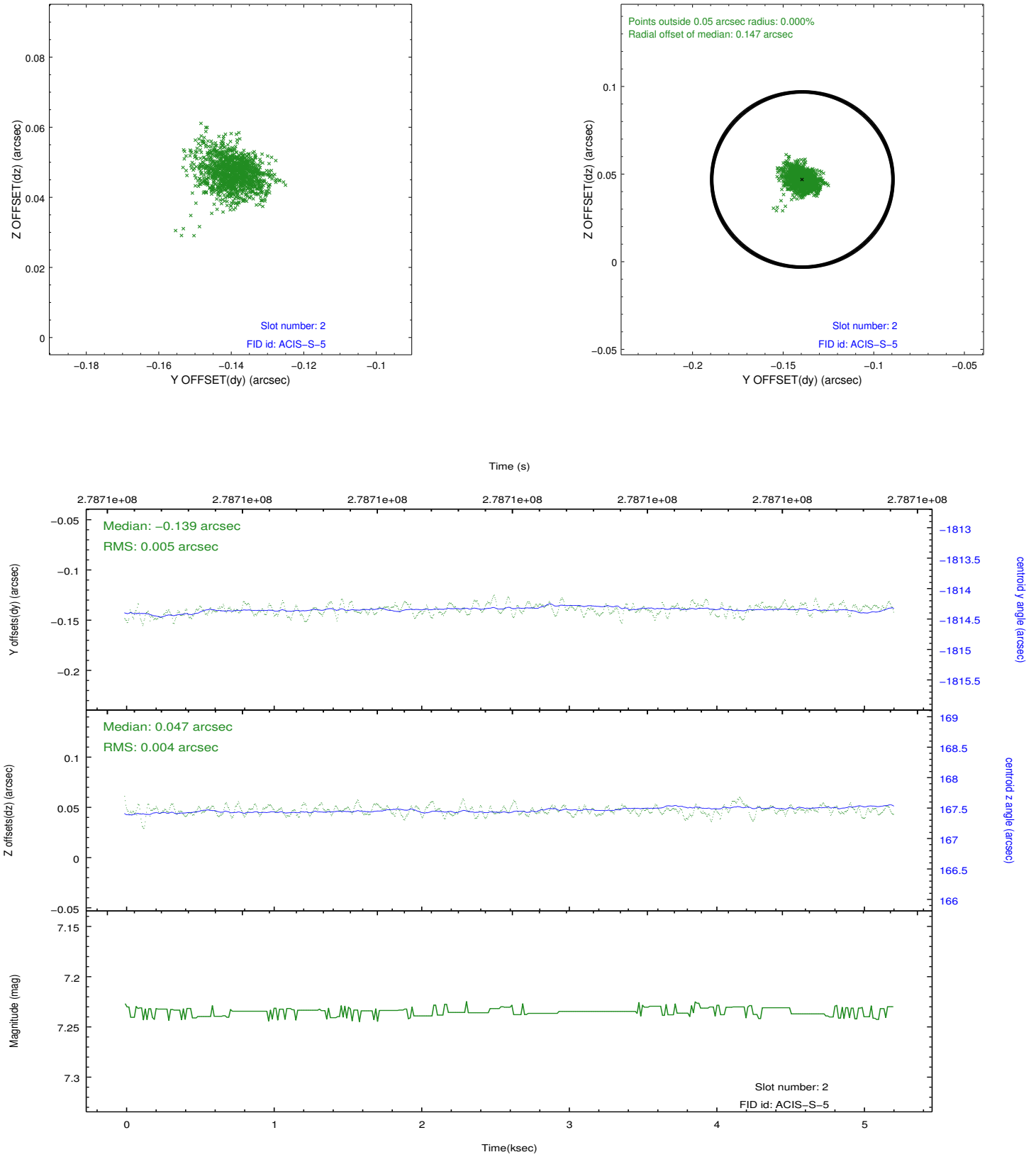
2.5.1 Slot 0



2.5.2 Slot 1



2.5.3 Slot 2



A Summary

A.1 Status

V&V Scientist	Joy Nichols
V&V Date (YYYY-MM-DD)	2012.04.13
V&V Edition	1
V&V Disposition and Status	OK
V&V Charge Time	5.212

A.2 Comments