

V&V Reference Report

L2 ASCDS Version : 8.5.1.1

Observation 6390 - L2 Version 5
Chandra X-Ray Center

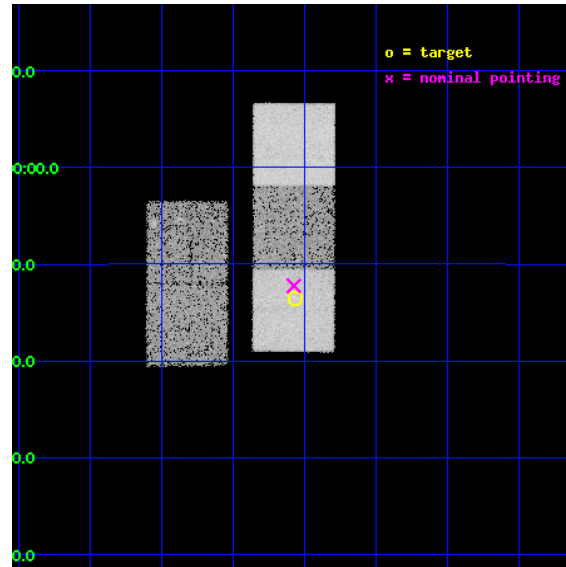
L2 Processing Date : Feb 13 2013

Contents

1	Front	2
2	OBI	3
2.1	OBI	3
2.1.1	Images	3
2.1.2	Bias	3
2.1.3	Parameters	4
2.1.4	Events	4
2.2	Compared Parameters	5
2.3	Aspect	6
2.4	Star Slots	9
2.4.1	Slot 3	9
2.4.2	Slot 4	10
2.4.3	Slot 5	11
2.4.4	Slot 6	12
2.4.5	Slot 7	13
2.5	FID Slots	14
2.5.1	Slot 0	14
2.5.2	Slot 1	15
2.5.3	Slot 2	16
A	Summary	17
A.1	Status	17
A.2	Comments	17

1 Front

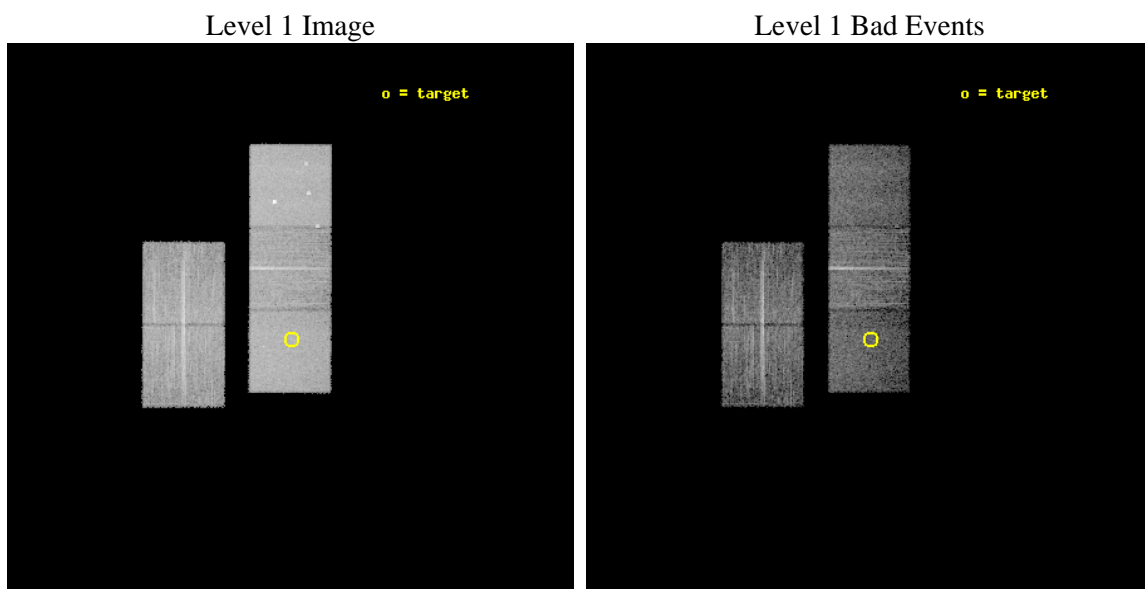
seq_num	800500	Sequence number
obs_id	6390	Observation id
title	A detailed study of a $z>1$ galaxy cluster	Proposal title
observer	Dr Laurence Jones	Principal investigator
object	XLSSJ022404.0-041328	Source name
dtcycle	0	
cycle	P	events from which exps? Prim/Second/Both
ra_targ	36.017083	Observer's specified target RA [deg]
dec_targ	-4.224694	Observer's specified target Dec [deg]
ra_nom	36.018716587629	Nominal RA [deg]
dec_nom	-4.2039956111425	Nominal Dec [deg]
roll_nom	90.156789364338	Nominal Roll [deg]
revision	5	Processing version of data
ontime	12006.299976885	Sum of GTIs [s]
livetime	11849.428828778	Livetime [s]
ontime2	12003.159086168	Sum of GTIs [s]
ontime3	12006.299976885	Sum of GTIs [s]
ontime5	12006.299976885	Sum of GTIs [s]
ontime6	12006.299976885	Sum of GTIs [s]
ontime7	12006.299976885	Sum of GTIs [s]
l2events	128726	Number of level 2 events



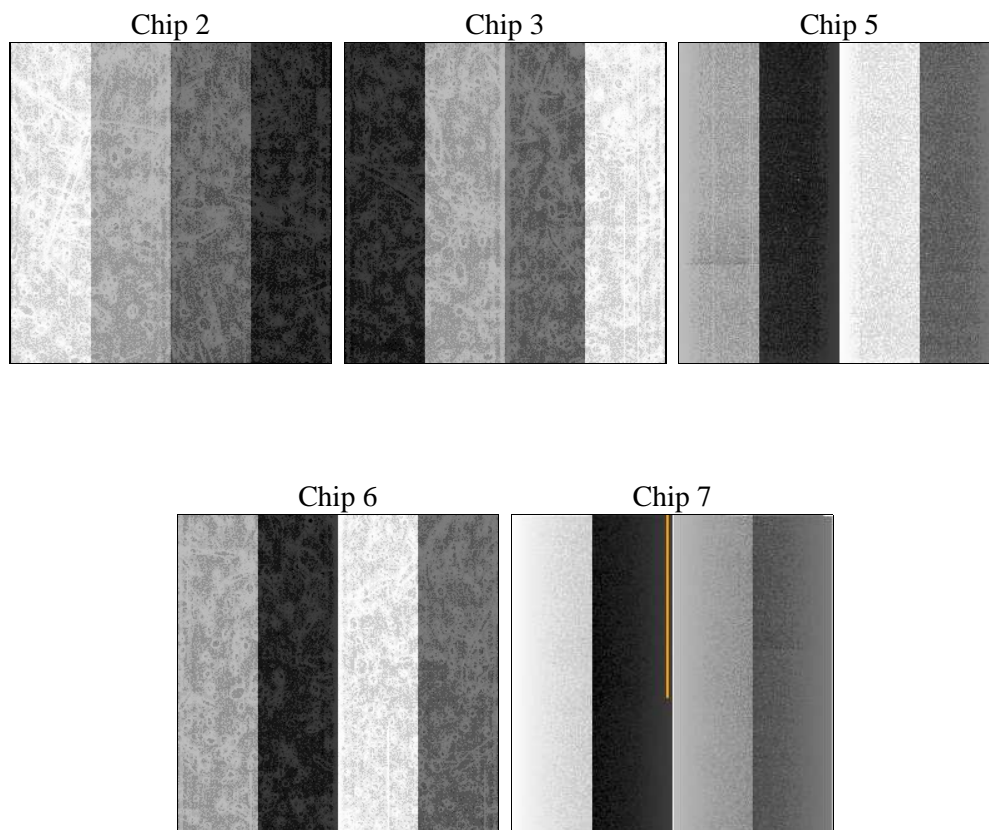
2 OBI

2.1 OBI

2.1.1 Images



2.1.2 Bias



2.1.3 Parameters

obi_num	0	Obi number	sched_exp_time	41664.172000	[s] Scheduled observation exposure time
ascdsver	8.5.1.1	Processing system revision	ontime	12006.299976885	Sum of GTIs [s]
caldsver	4.5.5	 	ontime2	12003.159086168	Sum of GTIs [s]
date	2013-02-13T05:05:17	Date and time of file creation	ontime3	12006.299976885	Sum of GTIs [s]
revision	5	Processing version of data	ontime5	12006.299976885	Sum of GTIs [s]
			ontime6	12006.299976885	Sum of GTIs [s]
			ontime7	12006.299976885	Sum of GTIs [s]
			l1events	394955	Number of level 1 events

2.1.4 Events

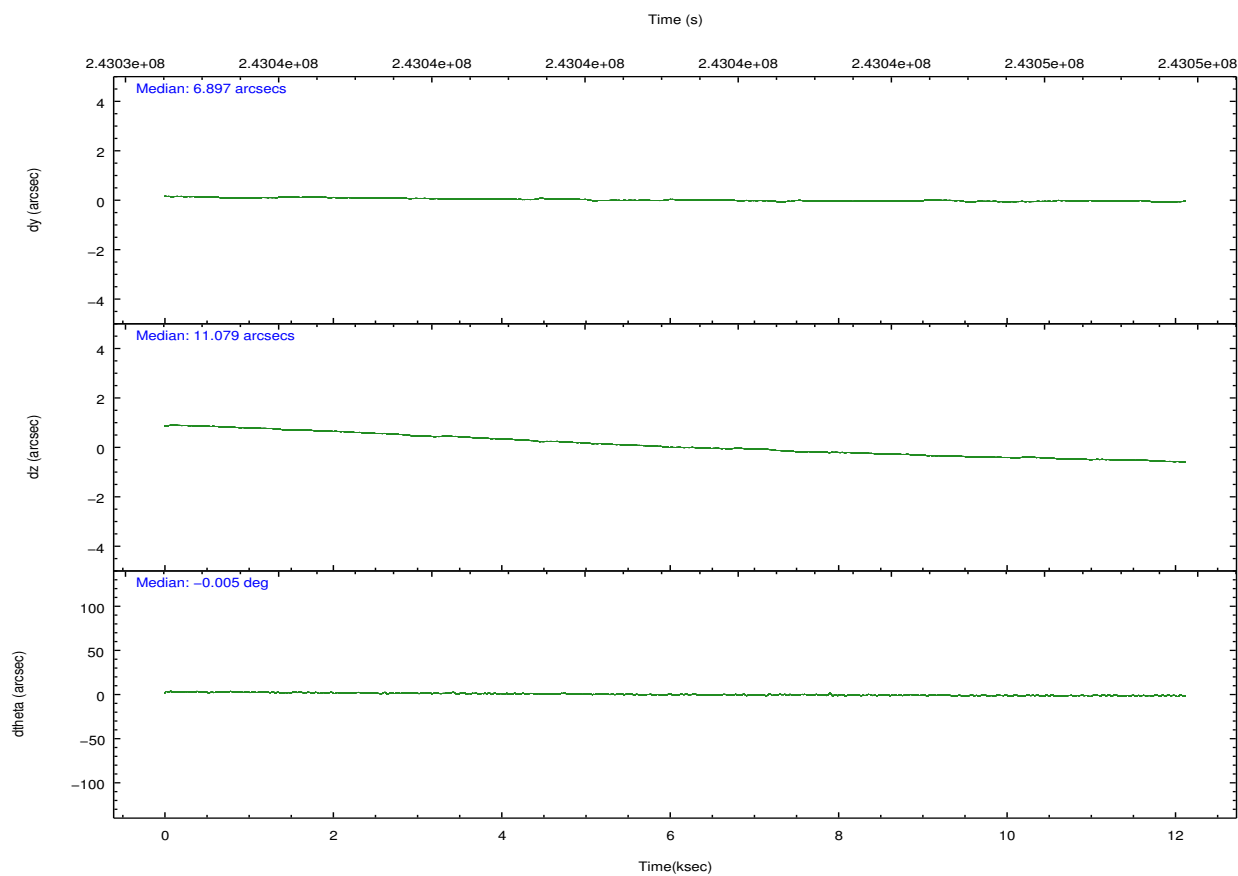
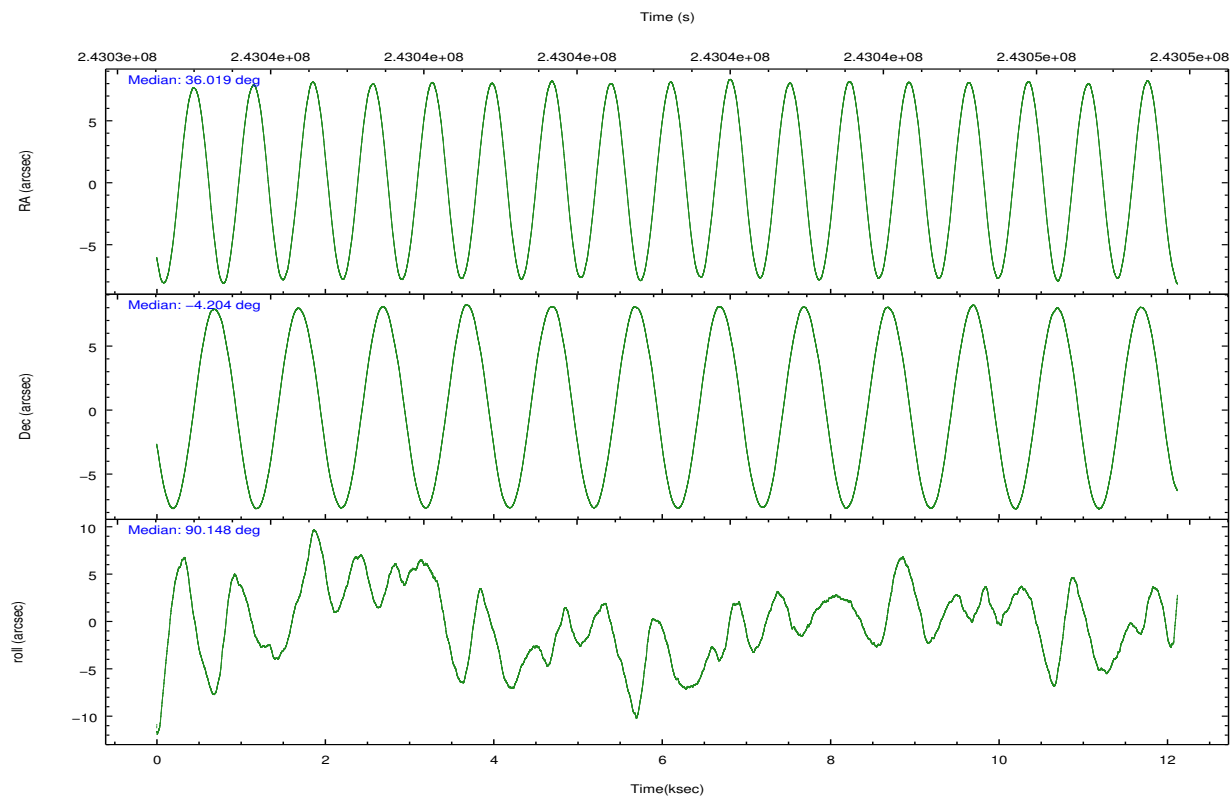
	ccd 2	ccd 3	ccd 5	ccd 6	ccd 7
level 1 events	69368	67012	103211	70361	85003
rejected events	58343	56631	44629	58656	38463
rejected %	84%	84%	43%	83%	45%

	ccd 2	ccd 3	ccd 5	ccd 6	ccd 7
grade 0 events	4584	4088	7169	4452	5421
	6%	6%	6%	6%	6%
grade 1 events	41	36	100	38	63
	0%	0%	0%	0%	0%
grade 2 events	2430	2046	18774	2269	9461
	3%	3%	18%	3%	11%
grade 3 events	895	996	2695	1034	4642
	1%	1%	2%	1%	5%
grade 4 events	992	965	2751	1006	4511
	1%	1%	2%	1%	5%
grade 5 events	1948	2312	7231	2446	7616
	2%	3%	7%	3%	8%
grade 6 events	2209	2344	27731	3025	22943
	3%	3%	26%	4%	26%
grade 7 events	56269	54225	36760	56091	30346
	81%	80%	35%	79%	35%

2.2 Compared Parameters

Parameter	Planned	Actual	Parameter	Planned	Actual
Instrument	ACIS	ACIS	Obspar format version number	7	7
Detector	ACIS-23567	ACIS-23567	Obspar file type	PREDICTED	ACTUAL
Grating	NONE	NONE	Obspar update status	OVERRIDE	OVERRIDE
Data mode	VFAINT	VFAINT	Number of optional ACIS chips dropped	0	0
Observation mode	POINTING	POINTING	On-chip summing requested	N	N
[deg] Pointing RA	36.032793	36.01871658762906	Subarray requested	NONE	NONE
[deg] Pointing Dec	-4.227361	-4.203995611142497	Alternating exposures requested	N	N
[deg] Pointing Roll	90.001156	90.15678936433807	[s] Primary exposure time	3.1	3.1
[mm] SIM focus pos	-0.6828225247311905	-0.6828225247311905			
[mm] SIM defocus	0.001444942264670179	0.001444942264670179			
[mm] SIM translation stage pos	-190.1425803651734	-190.1425803651734			
[mm] SIM translation stage offset	0.01005726120618533	0.01005726120618533			
[s] Observation start time (MET)	243035116.184000	243035116.184			
Observation start date	2005-09-13T21:44:12	2005-09-13T21:45:16			
[s] Observation end time (MET)	243047239.000000	243047239			
Observation end date	2005-09-14T01:07:19	2005-09-14T01:07:18			
Read mode	TIMED	TIMED			

2.3 Aspect

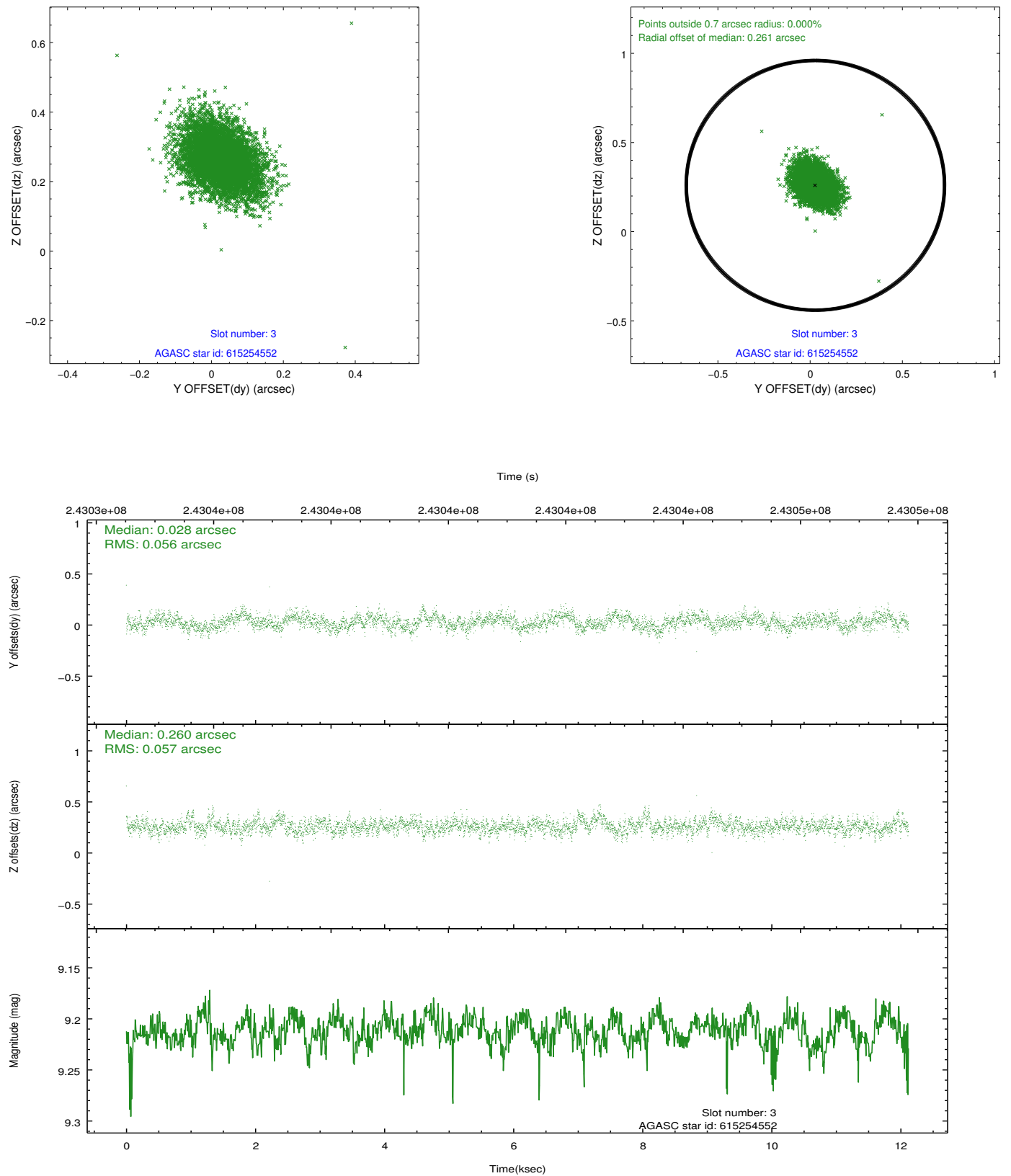


Slot Statistics

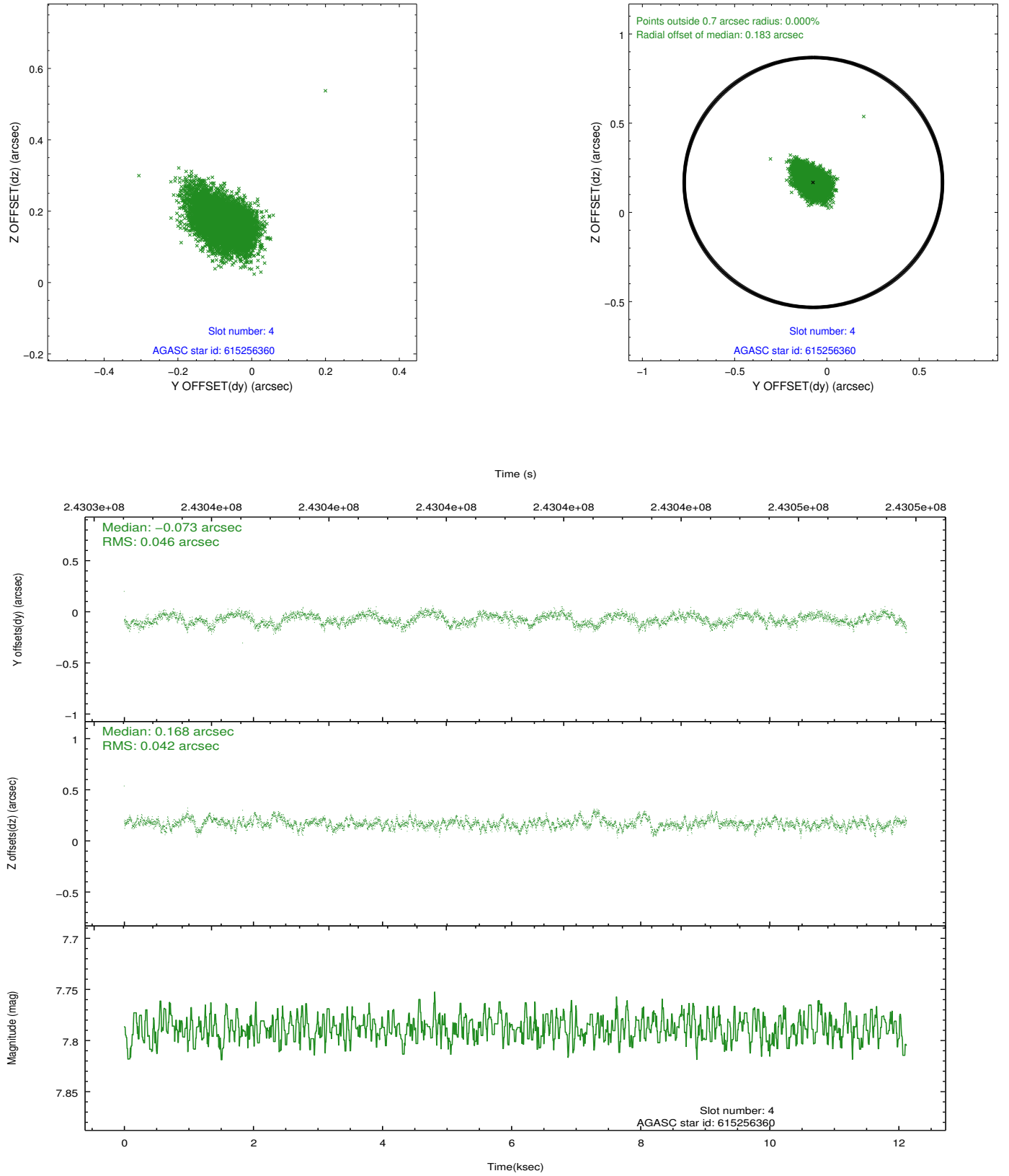
slot	status	id	mag	n_pts	med_dy	med_dz	dr1	dr2	ra	dec	mean_y	mean_z
0	FID	ACIS-S-2	7.10	2957	-0.051	-0.020	0.011	0.023	0.000000	0.000000	-759.69	-1732.42
1	FID	ACIS-S-4	7.21	2957	0.085	0.029	0.008	0.017	0.000000	0.000000	2153.51	175.72
2	FID	ACIS-S-5	7.23	2957	-0.066	-0.002	0.009	0.019	0.000000	0.000000	-1812.05	169.78
3	GUIDE	615254552	9.21	5907	0.028	0.260	0.083	0.142	36.600600	-3.877551	1259.18	-2038.84
4	GUIDE	615256360	7.79	5913	-0.073	0.168	0.065	0.109	36.286608	-3.875886	1265.72	-911.79
5	GUIDE	615256944	9.83	5913	0.158	-0.340	0.132	0.298	35.497386	-4.510719	-1020.39	1921.05
6	GUIDE	615260160	9.72	5910	0.053	-0.131	0.107	0.176	35.737387	-3.921265	1101.21	1061.33
7	GUIDE	615261280	10.30	5910	-0.158	0.052	0.187	0.311	36.528599	-4.553299	-1173.39	-1779.07

2.4 Star Slots

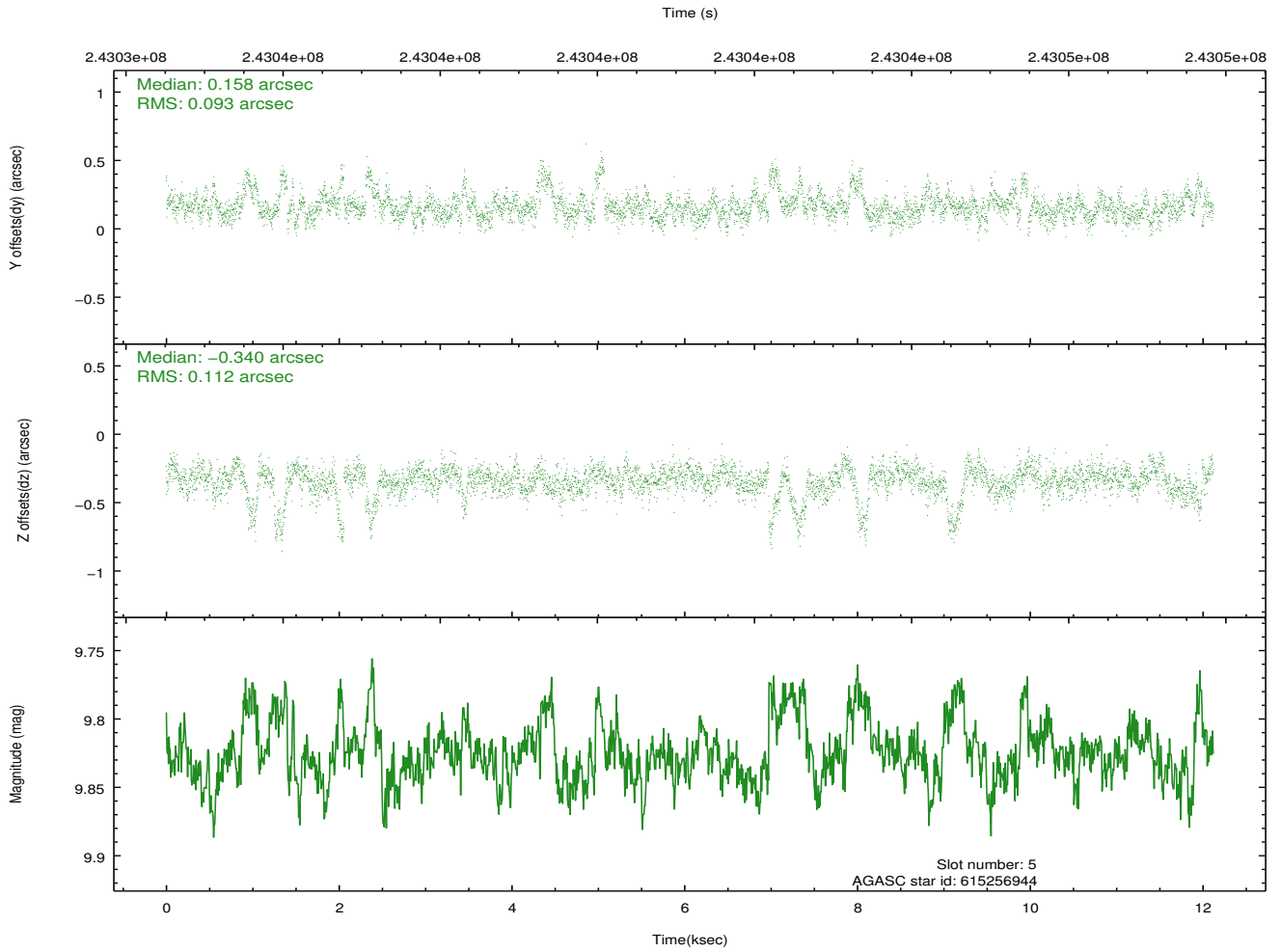
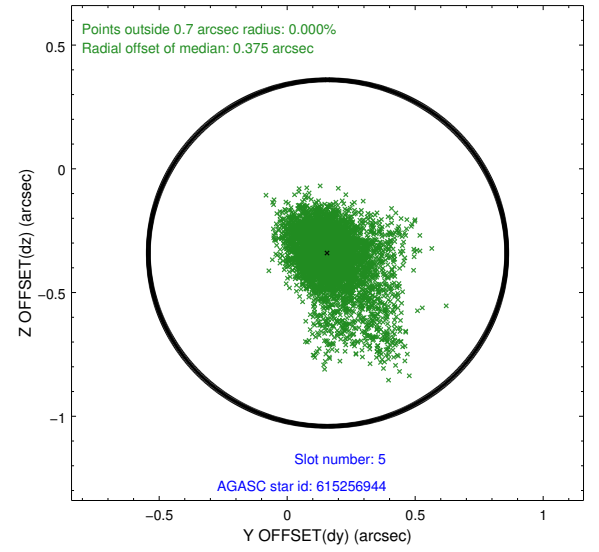
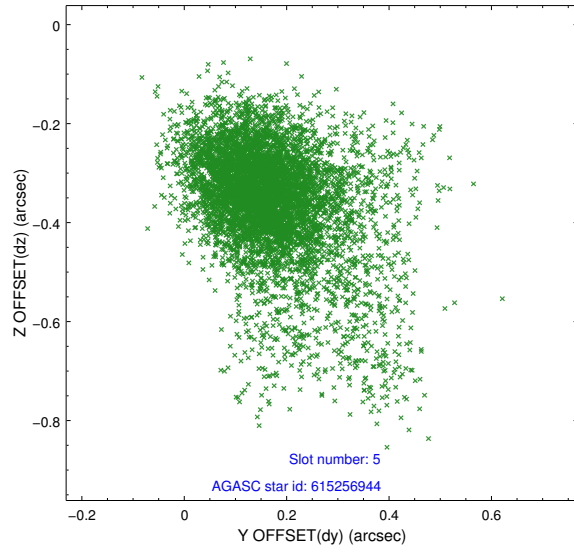
2.4.1 Slot 3



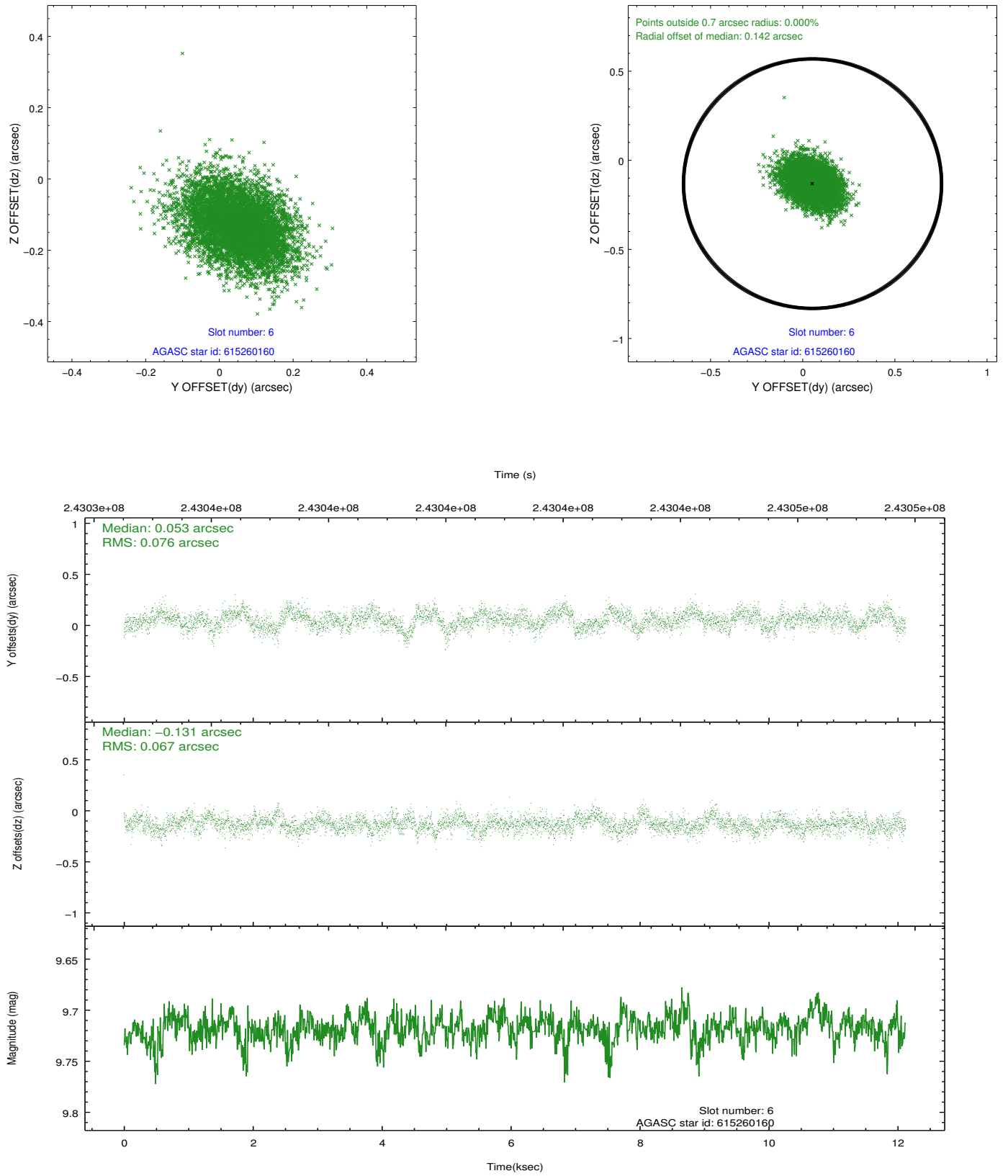
2.4.2 Slot 4



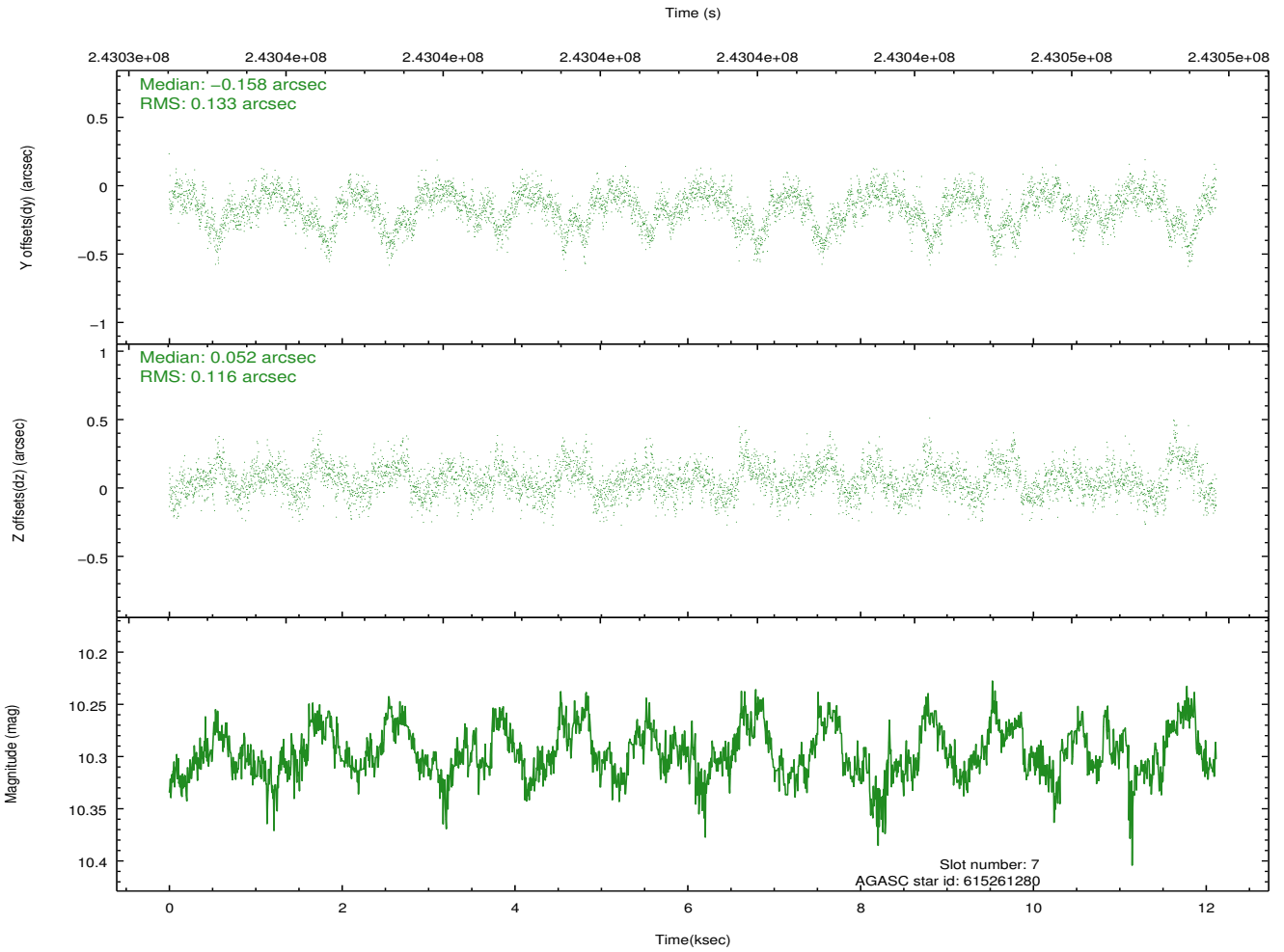
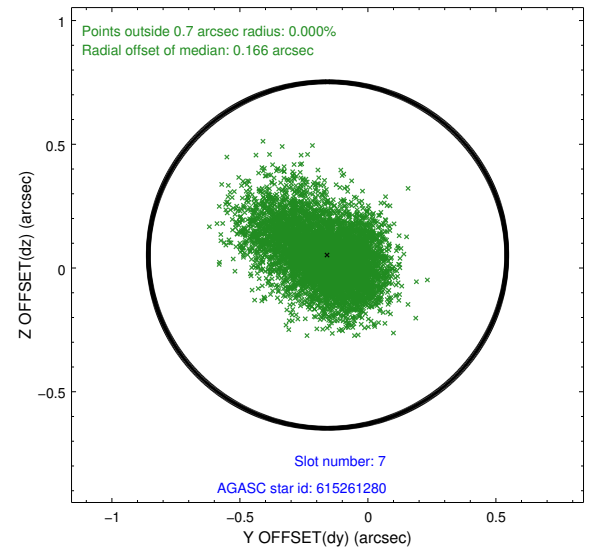
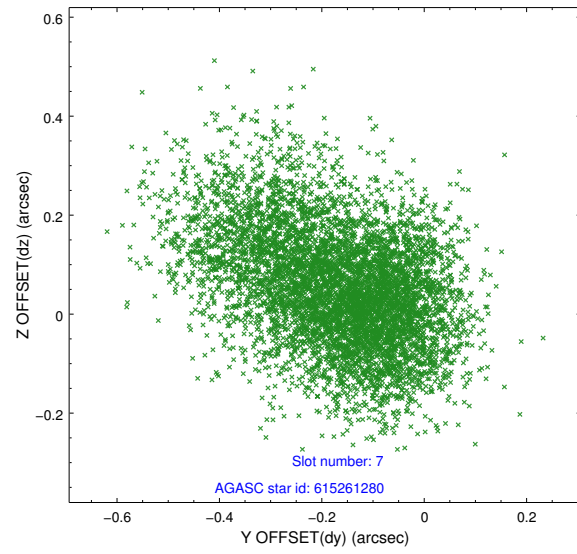
2.4.3 Slot 5



2.4.4 Slot 6

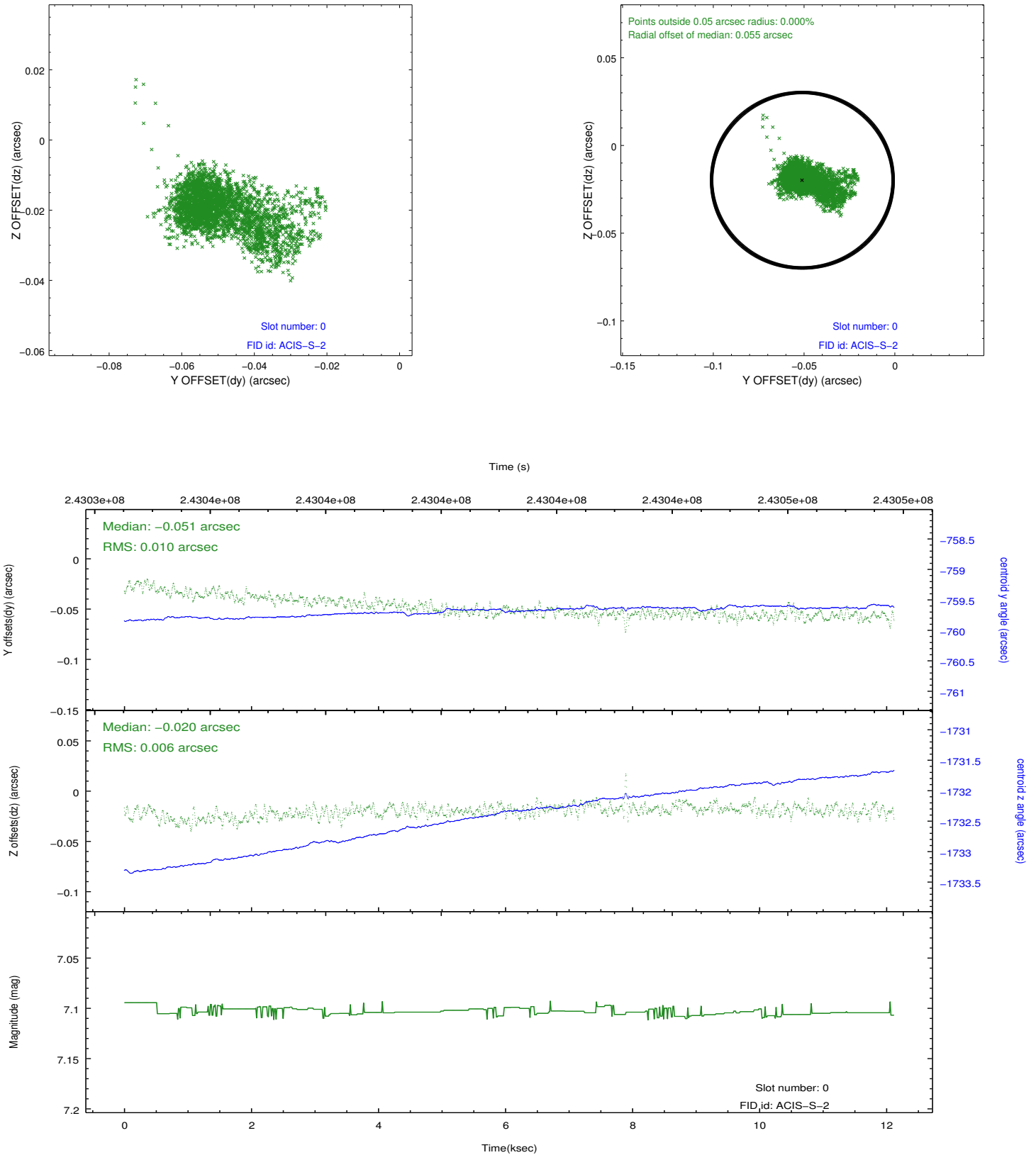


2.4.5 Slot 7

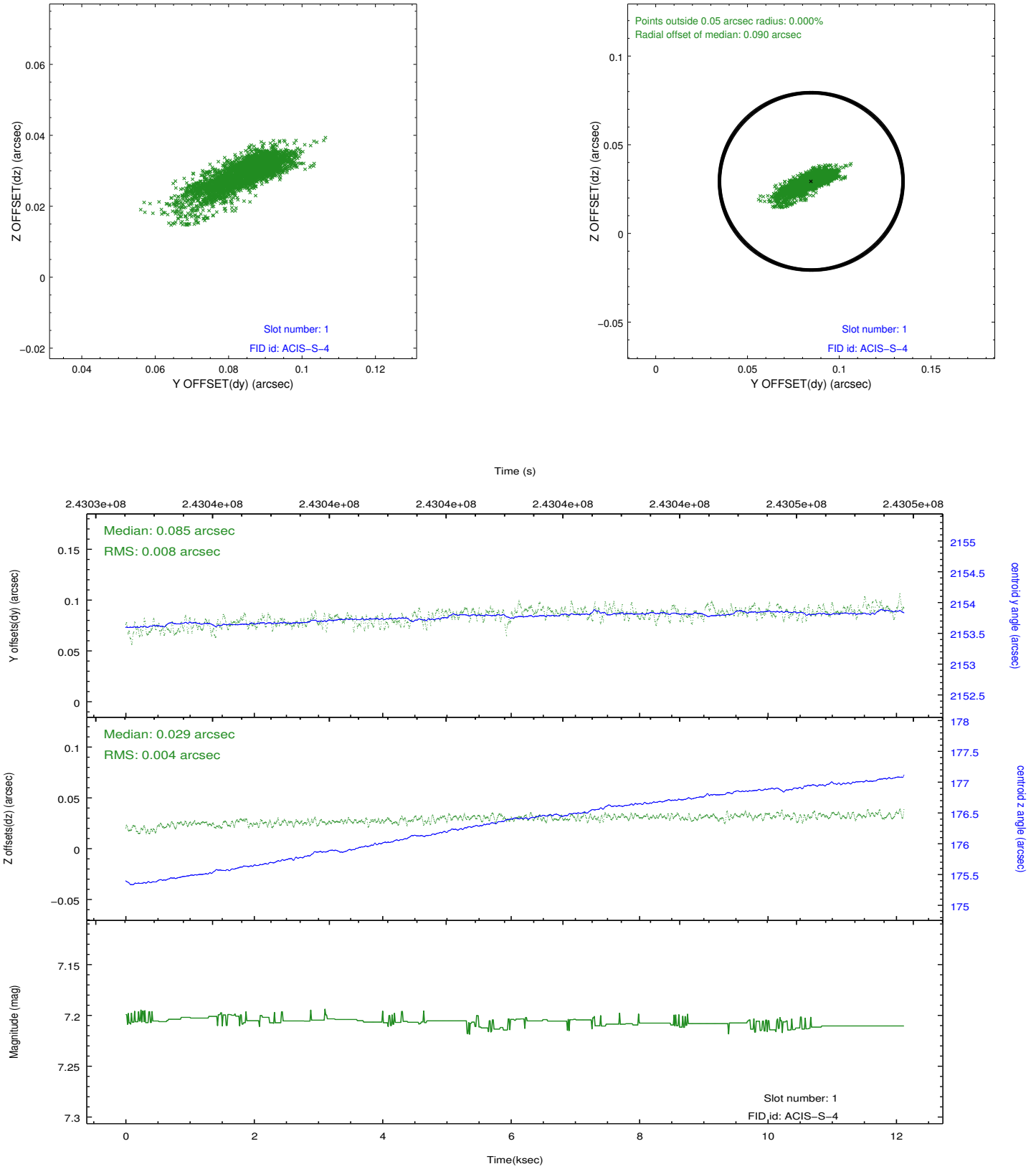


2.5 FID Slots

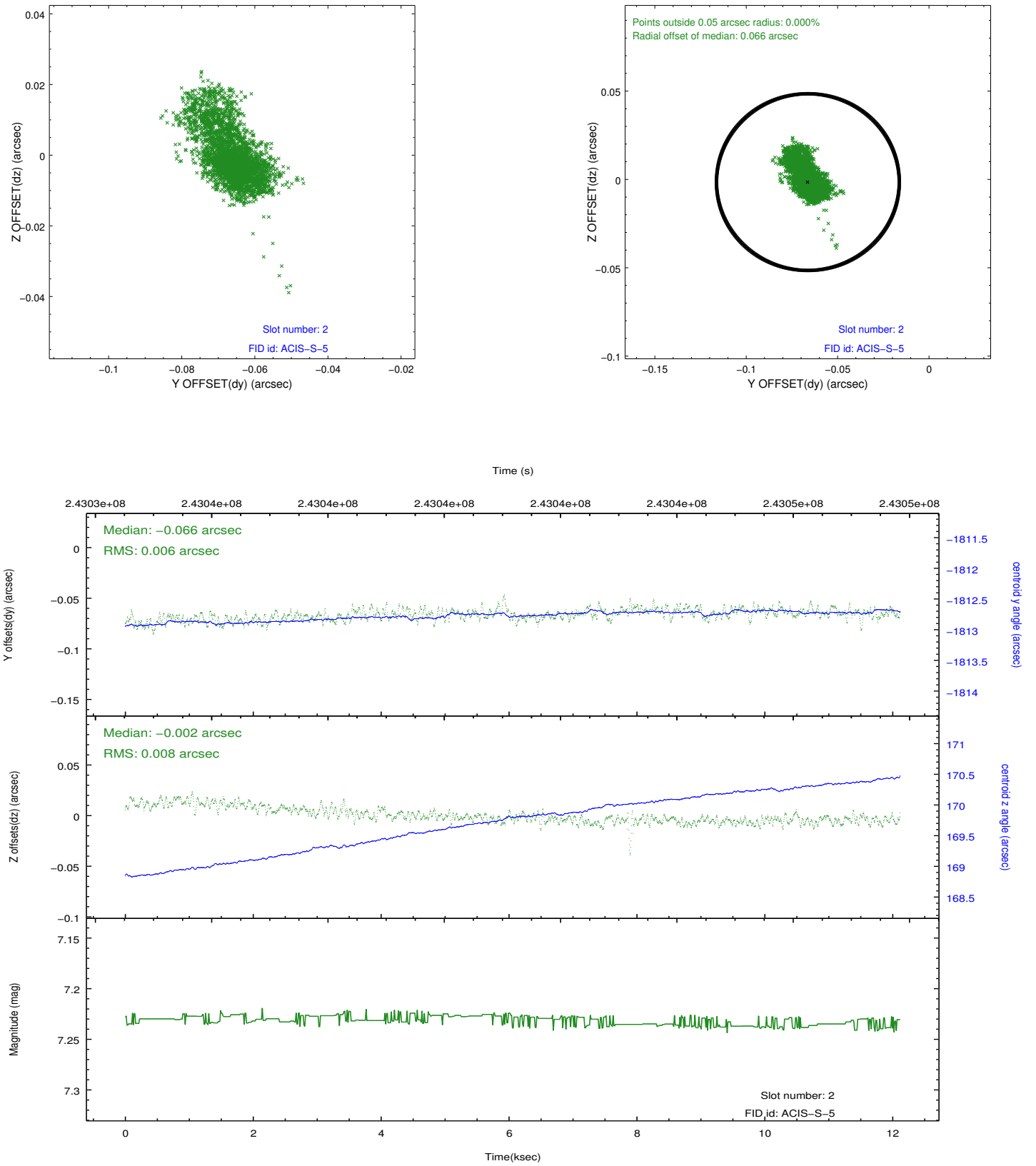
2.5.1 Slot 0



2.5.2 Slot 1



2.5.3 Slot 2



A Summary

A.1 Status

V&V Scientist	Jen Lauer
V&V Date (YYYY-MM-DD)	2013.02.15
V&V Edition	1
V&V Disposition and Status	OK
V&V Charge Time	12.23259

A.2 Comments

Charge time for this ObsId remains at previous value of 12.23259 ks although with the current processing the charge time would have been 12.01 ksec.

=====

This observation was interrupted by safing of the science instruments onboard Chandra due to high solar radiation environment. The observation was interrupted at 2005:257:01:06. Due to a high radiation environment, the instruments were safed and the observation terminated early. This observation has been reprocessed so that the aspect solution correctly handles the instrument safing and maneuver activities at the end of the observation.

=====

Joint Proposal: XMM