

V&V Reference Report

L2 ASCDS Version : 7.6.7.1

Observation 6340 - L2 Version 003
Chandra X-Ray Center

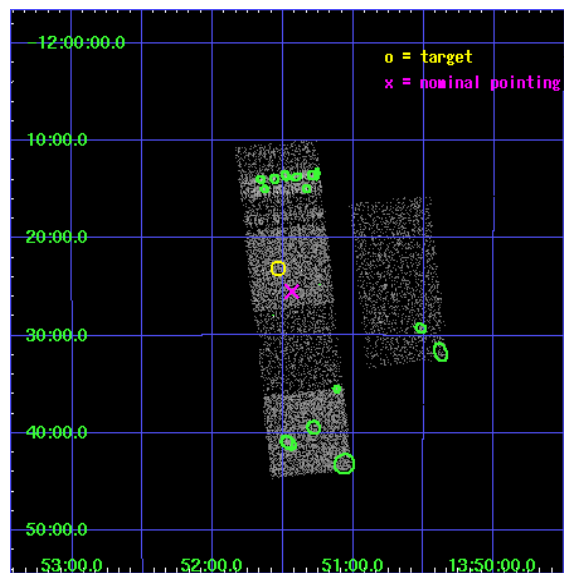
L2 Processing Date : Mar 15 2006

Contents

1	Front	2
2	OBI	3
2.1	OBI	3
2.1.1	Images	3
2.1.2	Bias	3
2.1.3	Parameters	4
2.1.4	Events	4
2.2	Compared Parameters	5
2.3	Aspect	6
2.4	Star Slots	9
2.4.1	Slot 4	9
2.4.2	Slot 5	10
2.4.3	Slot 6	11
2.5	FID Slots	12
2.5.1	Slot 0	12
2.5.2	Slot 1	13
2.5.3	Slot 2	14
3	Point Sources	15
A	Summary	16
A.1	Status	16
A.2	Comments	16

1 Front

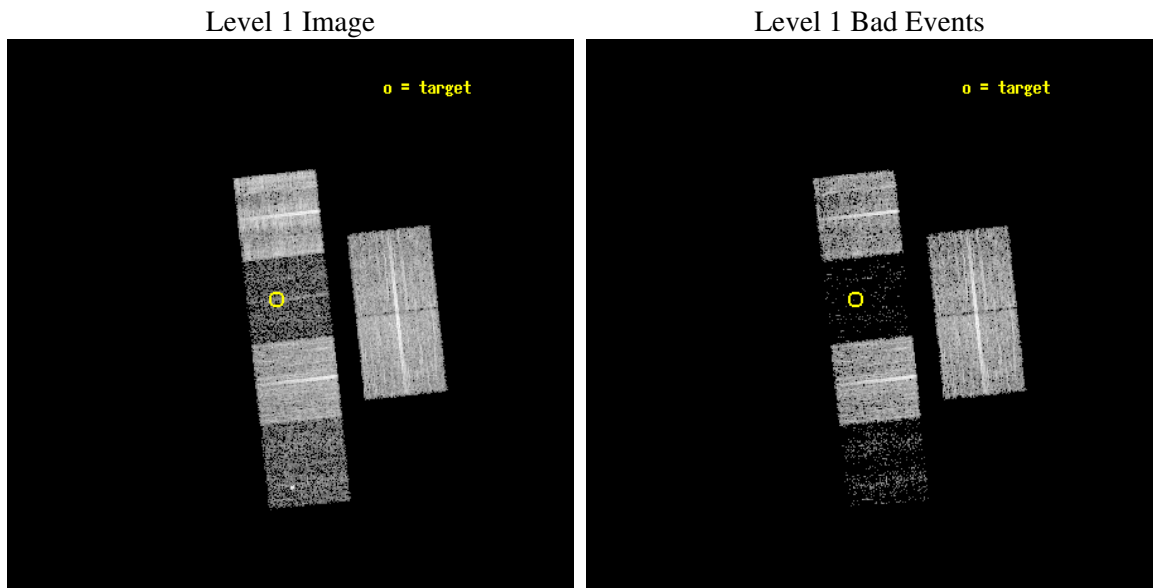
seq_num	100056
obs_id	6340
title	Comet 9P/Tempel 1 During the Deep Impact Encounter
observer	Dr. Carey Lisse
object	9P/Tempel 1
dtcycle	0
cycle	P
ra_targ	207.882802
dec_targ	-12.384228
ra_nom	207.8592804166
dec_nom	-12.424687940215
roll_nom	263.74160095651
revision	3
ontime	8531.1999682188
livetime	8423.1727773493
ontime2	8531.1999682188
ontime3	8531.1999682188
ontime5	8531.1999682188
ontime6	8531.1999682188
ontime7	8531.1999682188
ontime8	8531.1999682188
l2events	16030



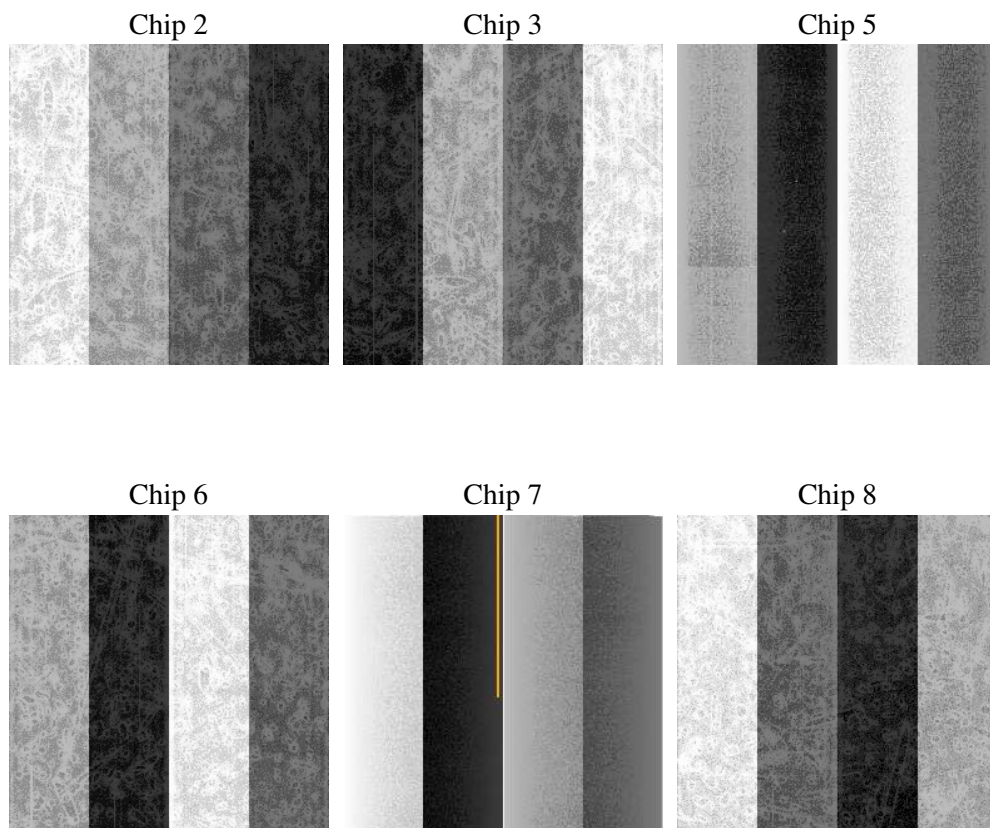
2 OBI

2.1 OBI

2.1.1 Images



2.1.2 Bias



2.1.3 Parameters

obi_num	0
ascdsver	7.6.7.1
caldbver	3.2.1
date	2006-03-15T16:10:50
revision	3

sched_exp_time	8350.000000
ontime	8971.1072601974
ontime2	8971.1072402894
ontime3	8971.1072402894
ontime5	8971.1072601974
ontime6	8971.1072402894
ontime7	8971.1072601974
ontime8	8971.1072402894
l1events	182766

2.1.4 Events

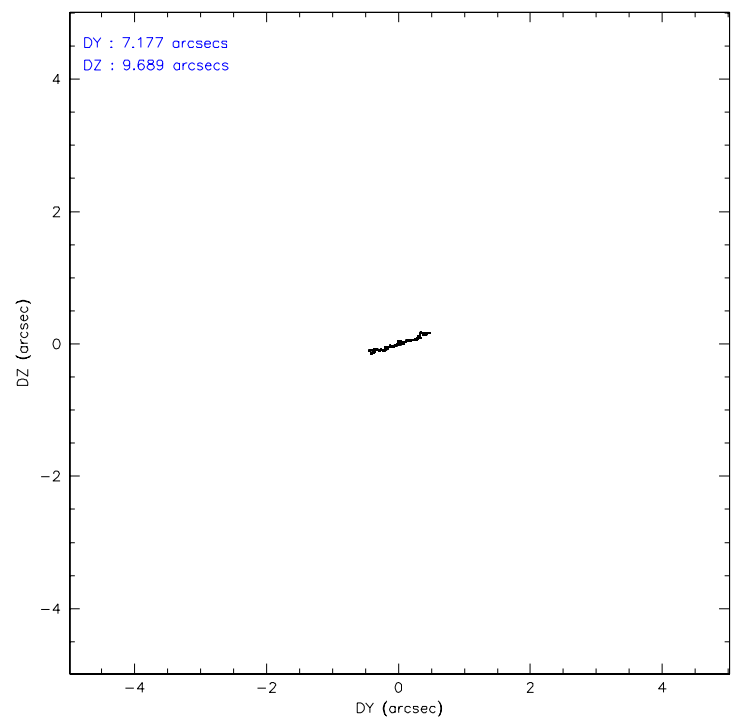
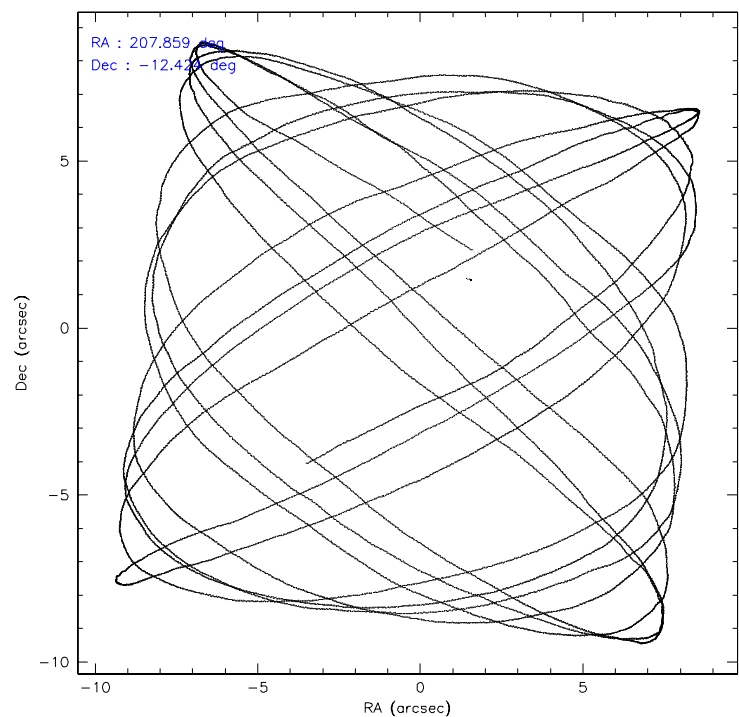
	ccd 2	ccd 3	ccd 5	ccd 6	ccd 7	ccd 8
level 1 events	44242	36714	8790	38097	6461	48462
rejected events	41972	35300	3412	36167	1593	31477
rejected %	94%	96%	38%	94%	24%	64%

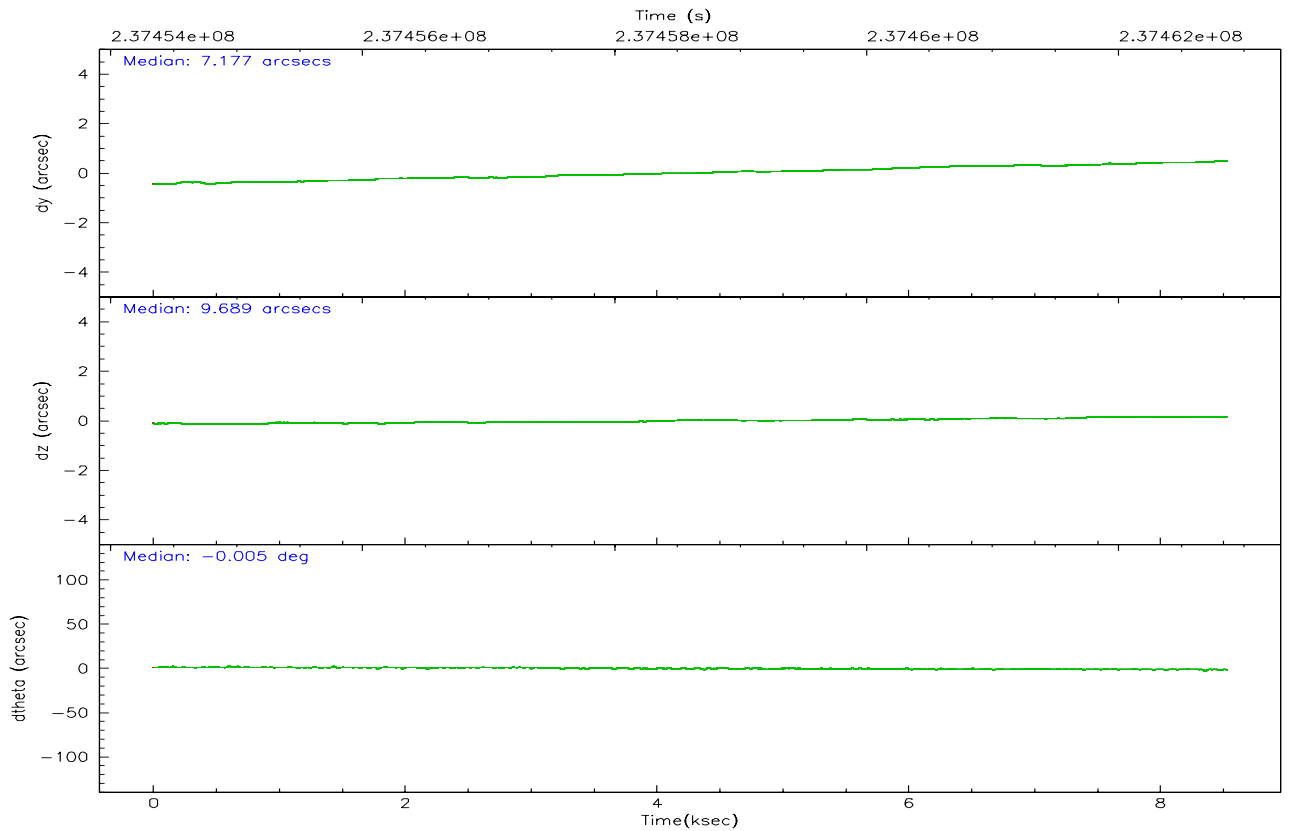
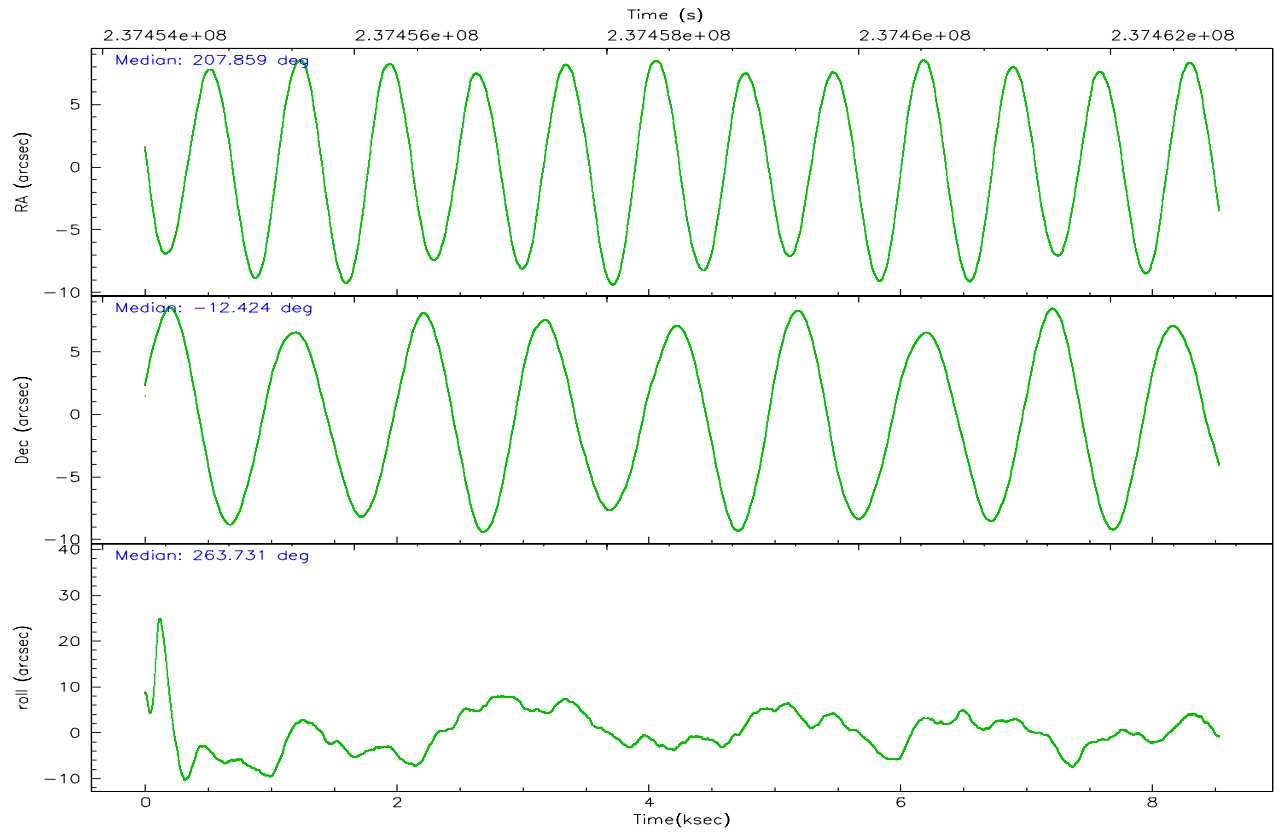
	ccd 2	ccd 3	ccd 5	ccd 6	ccd 7	ccd 8
grade 0 events	1149	741	1333	1100	1292	5952
	2%	2%	15%	2%	19%	12%
grade 1 events	24	8	20	15	17	58
	0%	0%	0%	0%	0%	0%
grade 2 events	507	217	2201	361	1782	2966
	1%	0%	25%	0%	27%	6%
grade 3 events	235	199	751	219	723	2812
	0%	0%	8%	0%	11%	5%
grade 4 events	299	206	602	235	717	2479
	0%	0%	6%	0%	11%	5%
grade 5 events	56	28	434	26	175	243
	0%	0%	4%	0%	2%	0%
grade 6 events	196	115	735	113	621	3673
	0%	0%	8%	0%	9%	7%
grade 7 events	41776	35200	2714	36028	1134	30279
	94%	95%	30%	94%	17%	62%

2.2 Compared Parameters

Parameter	Planned	Actual	Parameter	Planned	Actual
Instrument	ACIS	ACIS	Obspar format version number	6	6
Detector	ACIS-235678	ACIS-235678	Obspar file type	PREDICTED	ACTUAL
Grating	NONE	NONE	Obspar update status	NONE	UPDATED
Data mode	VFAINT	VFAINT	On-chip summing requested	N	N
Observation mode	POINTING	POINTING	Subarray requested	NONE	NONE
Pointing RA	207.847693	207.8592804166042	Alternating exposures requested	N	N
Pointing Dec	-12.400005	-12.42468794021525	Primary exposure time	0.000000	3.2
Pointing Roll	263.582467	263.7416009565148			
SIM focus pos (mm)	-0.684267	-0.6828225247311905			
SIM defocus (mm)	0	0.001444936568705701			
SIM translation stage pos (mm)	-190.132523	-190.1400660498719			
SIM translation stage offset (mm)	0	0.00754346686406393			
Observation start time	237454516.184000	237453894.9877			
Observation start date	2005-07-11T07:34:12	2005-07-11T07:24:54			
Observation end time	237462866.184000	237463247.08813			
Observation end date	2005-07-11T09:53:22	2005-07-11T10:00:47			
Read mode	TIMED	TIMED			

2.3 Aspect



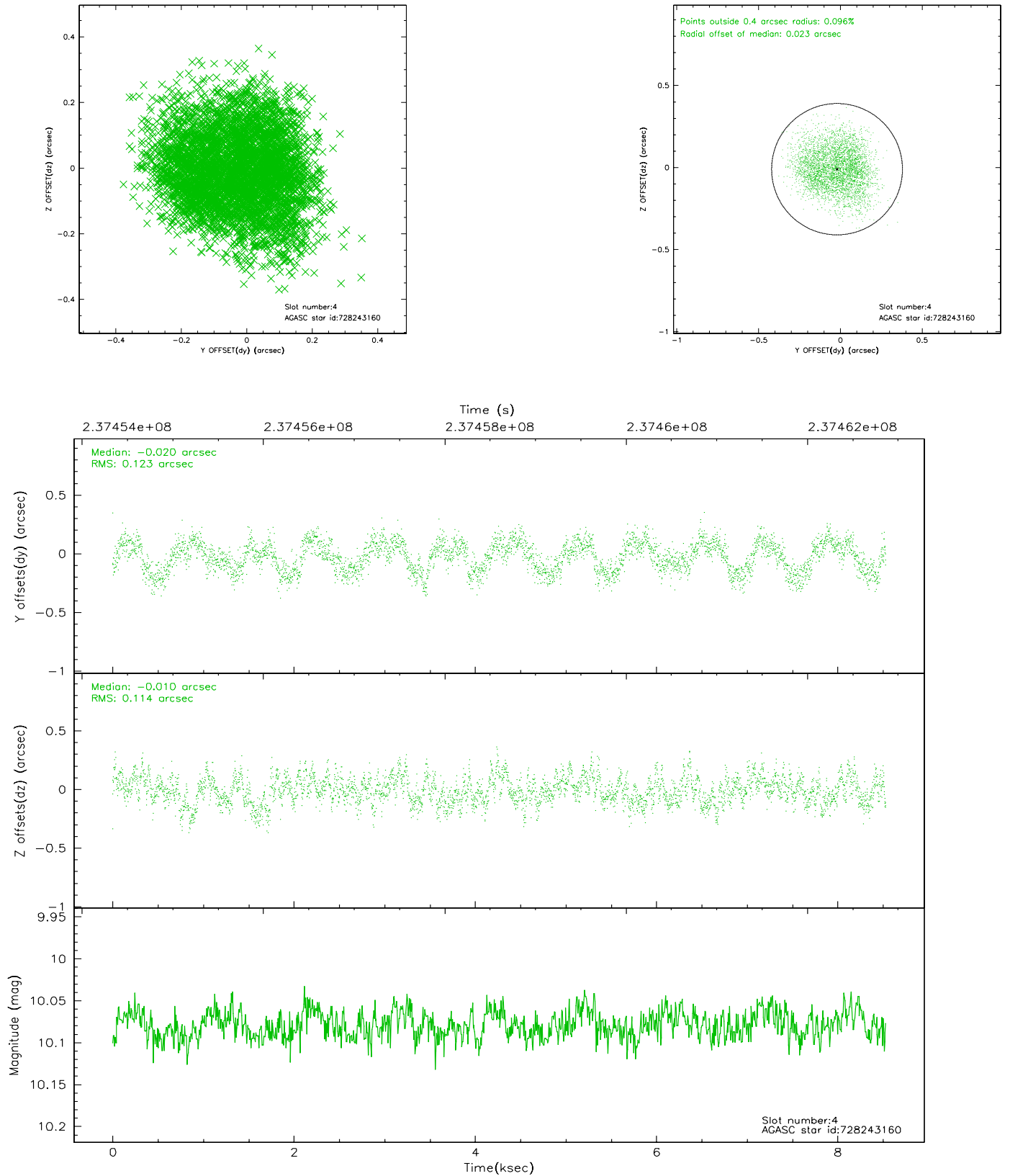


Slot Statistics

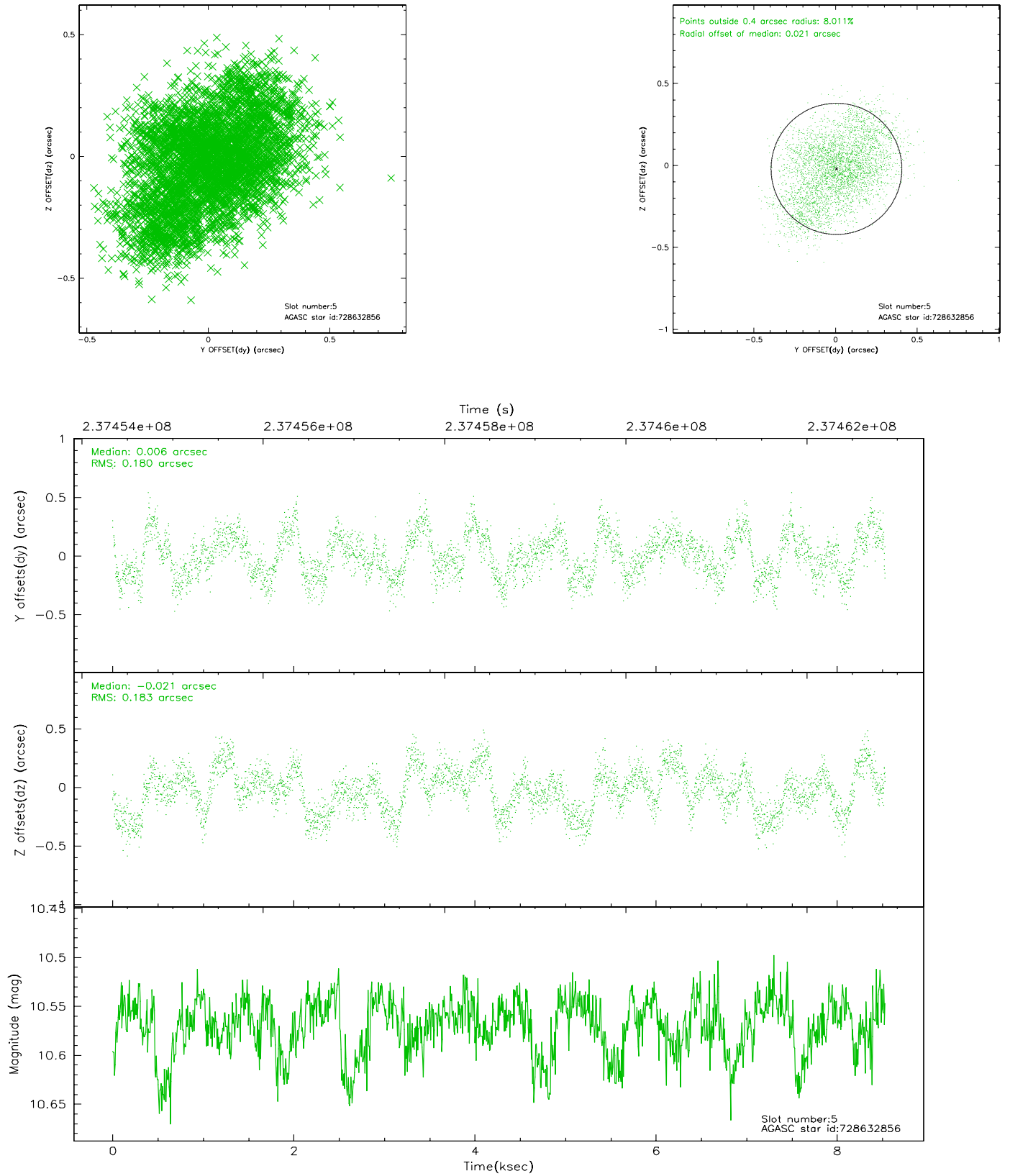
slot	status	id	mag	n_pts	med_dy	med_dz	dr1	dr2	ra	dec	mean_y	mean_z
0	FID	ACIS-S-2	7.10	2082	-0.036	-0.010	0.007	0.011	0.000000	0.000000	-759.94	-1730.96
1	FID	ACIS-S-4	7.21	2082	0.053	0.020	0.009	0.015	0.000000	0.000000	2153.09	176.95
2	FID	ACIS-S-5	7.23	2081	-0.047	-0.002	0.010	0.017	0.000000	0.000000	-1812.00	171.25
3	OMITTED		0.00	0	0.000	0.000	0.000	0.000	0.000000	0.000000	0.00	0.00
4	GUIDE	728243160	10.08	4160	-0.020	-0.010	0.182	0.276	208.309960	-11.797392	-2335.99	1376.30
5	GUIDE	728632856	10.57	4157	0.006	-0.021	0.282	0.434	208.274834	-12.910844	1661.18	1695.97
6	GUIDE	728633928	10.32	4155	0.027	0.038	0.220	0.337	208.253445	-12.706055	937.69	1540.09
7	OMITTED		0.00	0	0.000	0.000	0.000	0.000	0.000000	0.000000	0.00	0.00

2.4 Star Slots

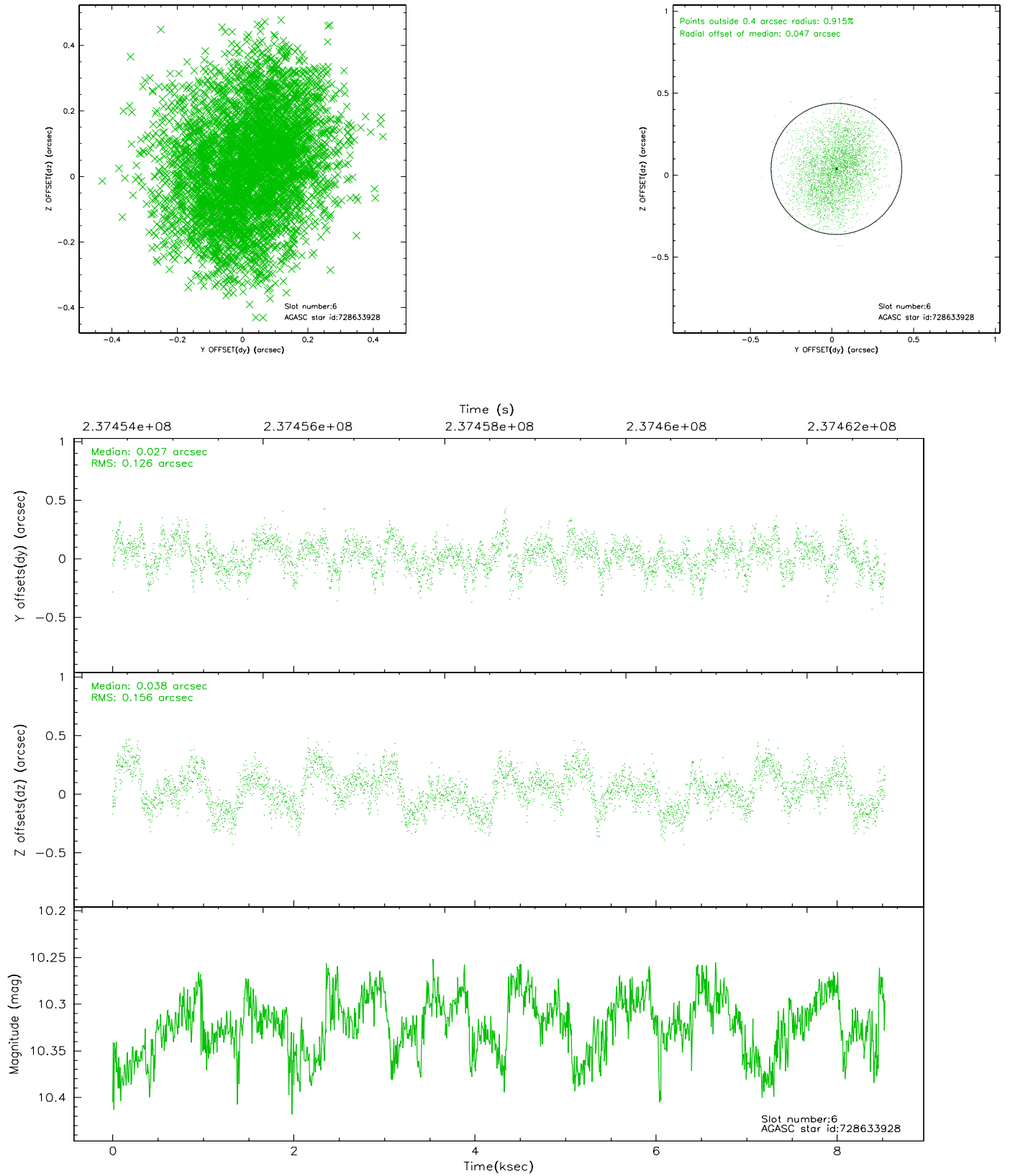
2.4.1 Slot 4



2.4.2 Slot 5

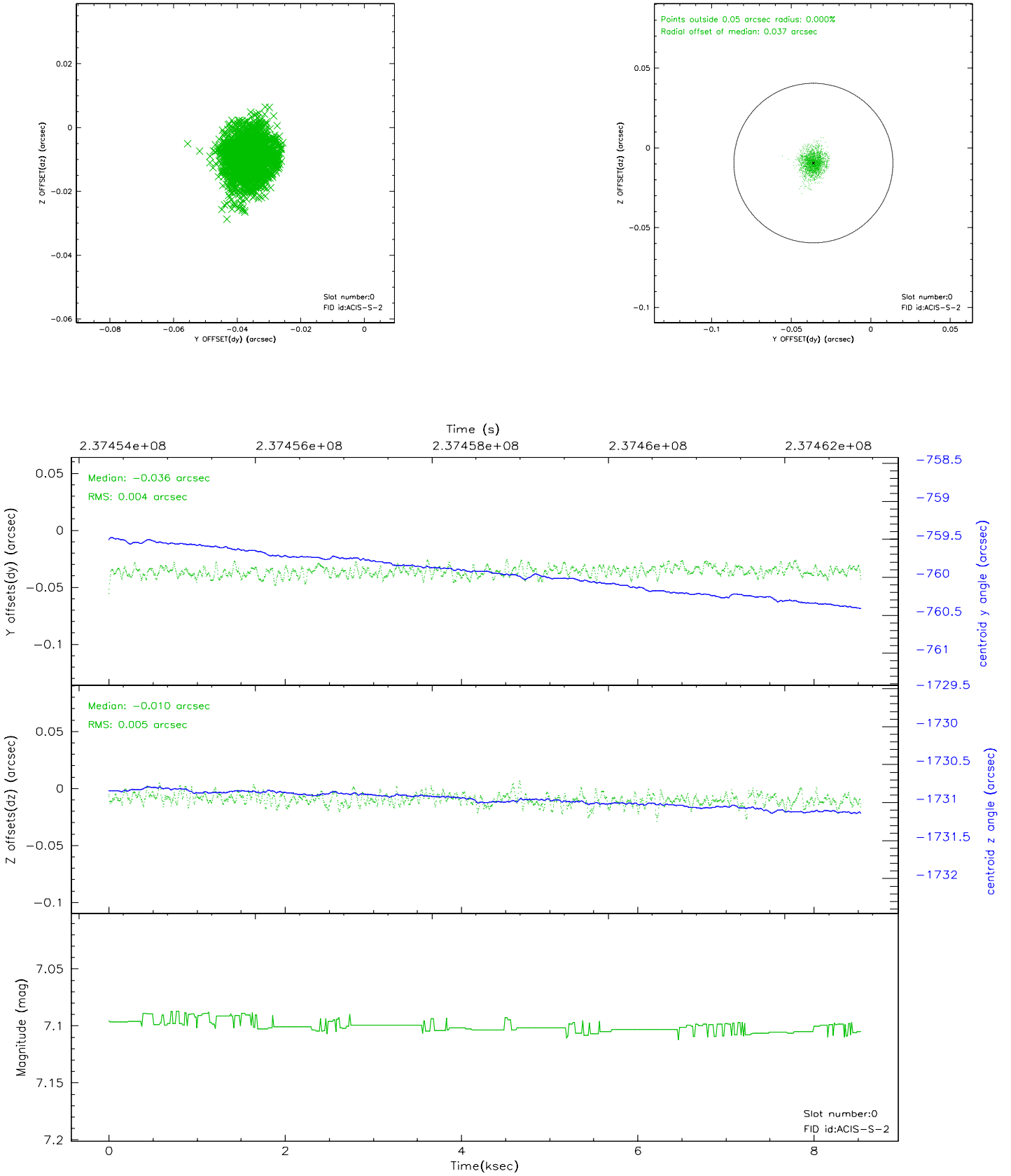


2.4.3 Slot 6

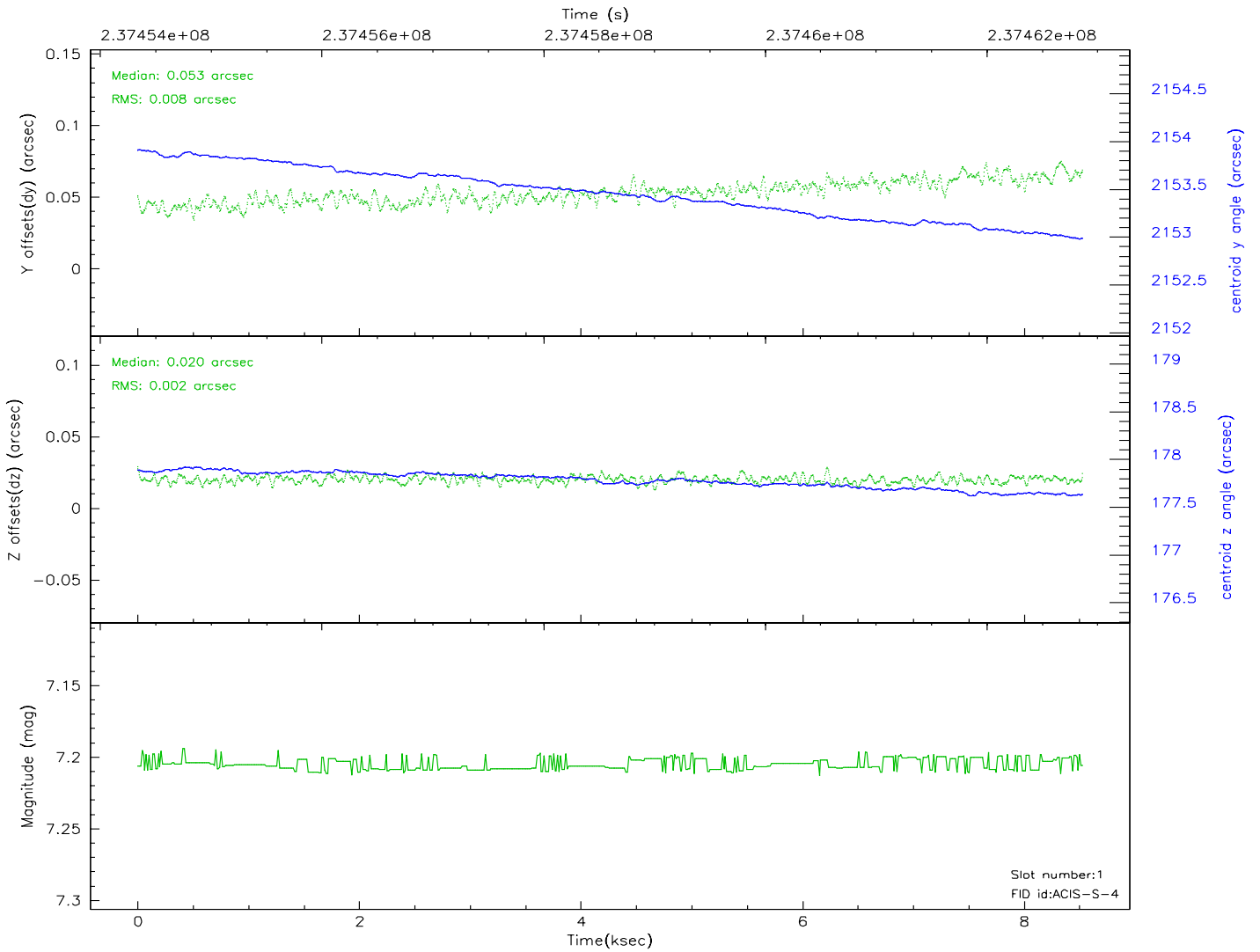
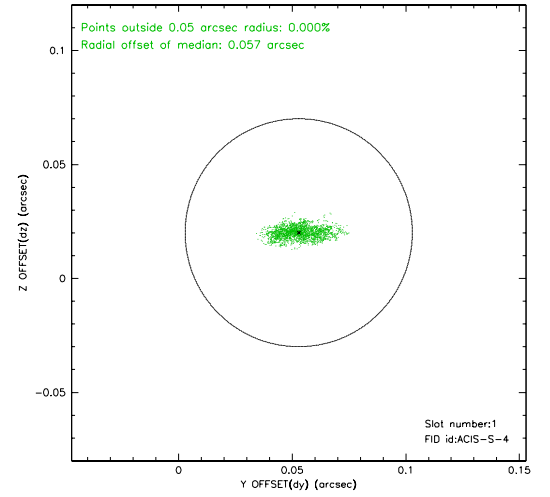
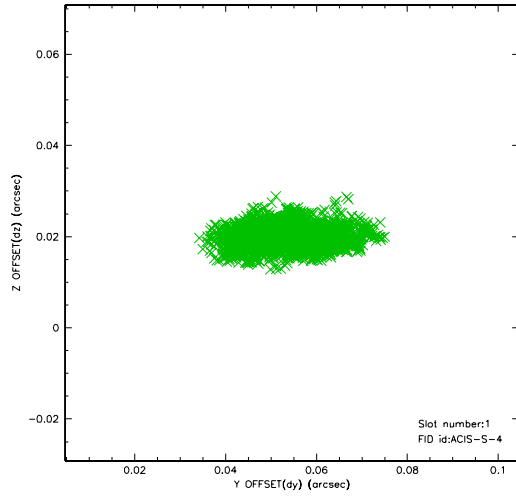


2.5 FID Slots

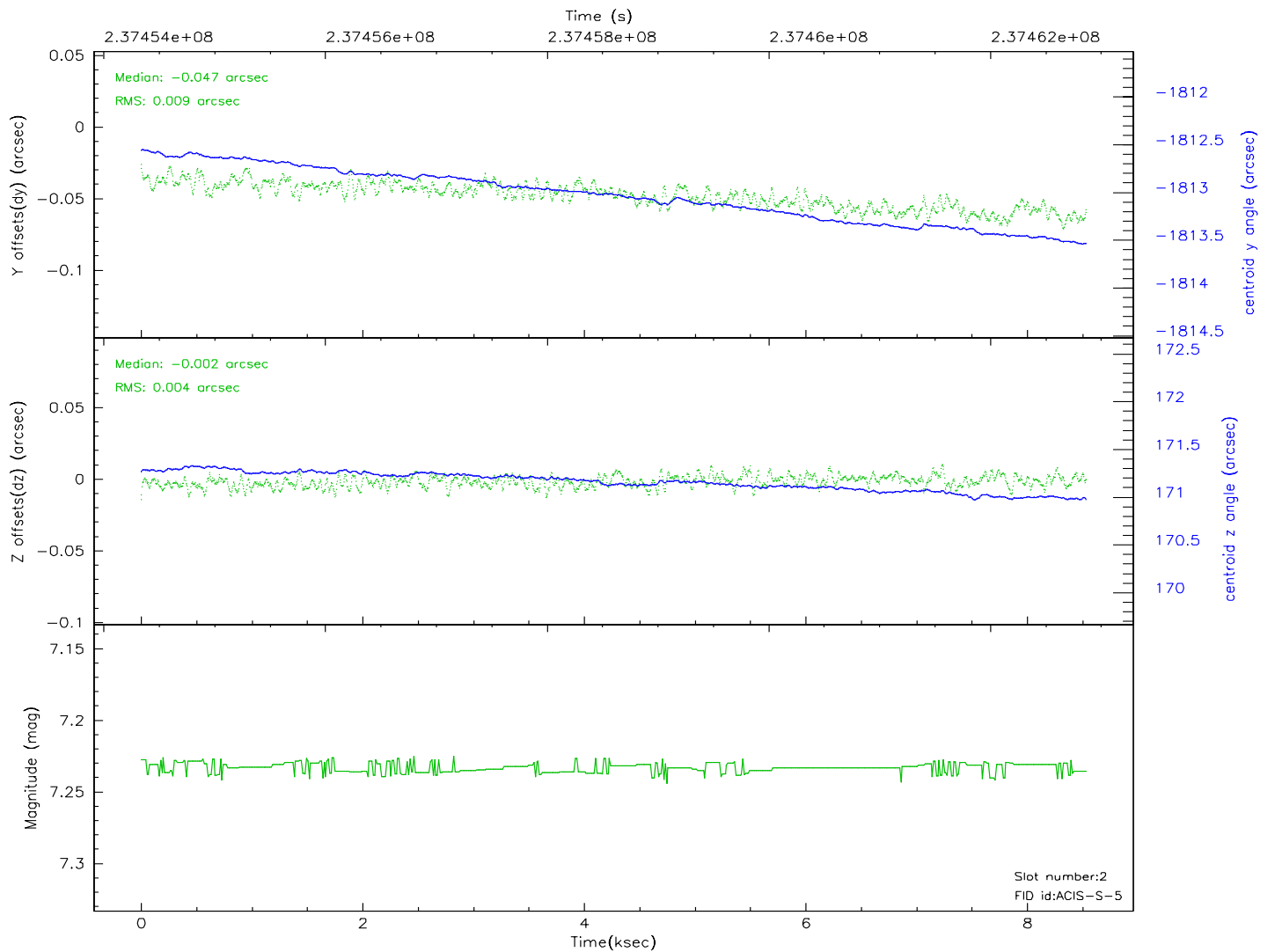
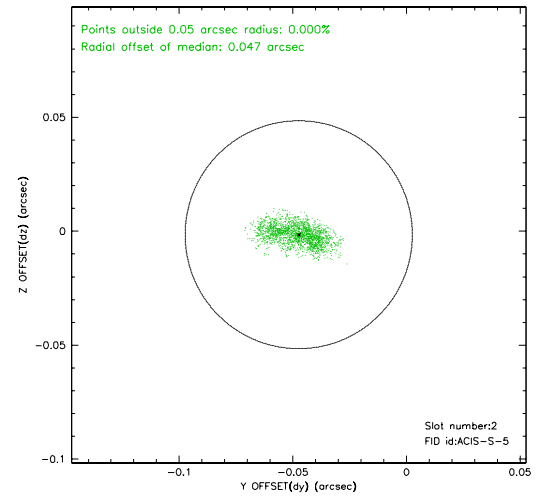
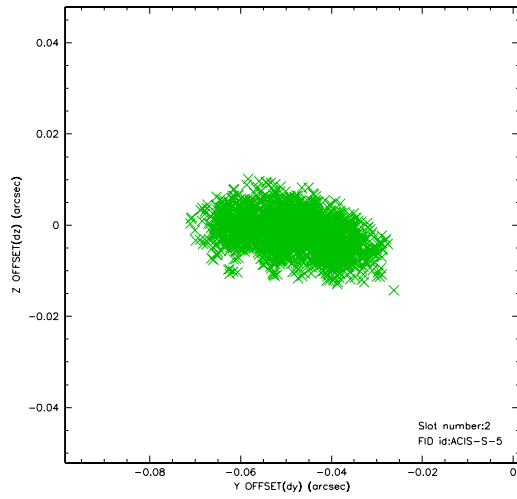
2.5.1 Slot 0



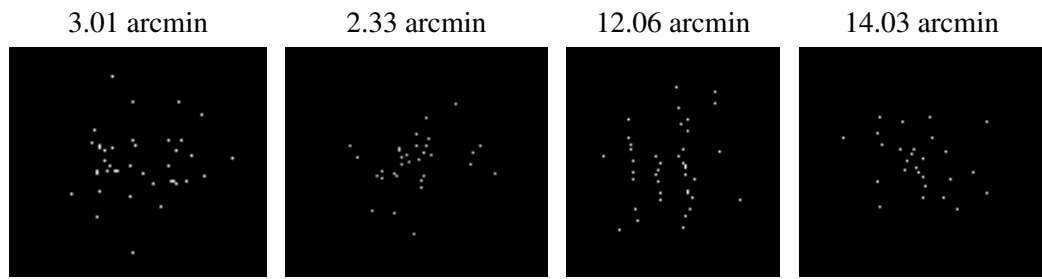
2.5.2 Slot 1



2.5.3 Slot 2



3 Point Sources



A Summary

A.1 Status

V&V Scientist	Beth Sundheim
V&V Date (YYYY-MM-DD)	2010.10.04
V&V Edition	2
V&V Disposition and Status	OK
V&V Charge Time	8.531199

A.2 Comments

The guide stars in slots 3 and 7 were manually excluded from the processing due to poor data quality.