

V&V Reference Report

L2 ASCDS Version : 8.4.5

Observation 62860 - L2 Version 3
Chandra X-Ray Center

L2 Processing Date : Sep 25 2012

Contents

1	Front	2
2	OBI	3
2.1	OBI	3
2.1.1	Images	3
2.1.2	Bias	3
2.1.3	Parameters	4
2.1.4	Events	4
2.2	Compared Parameters	5
2.3	Star Slots	6
2.4	FID Slots	6
A	Summary	7
A.1	Status	7
A.2	Comments	7

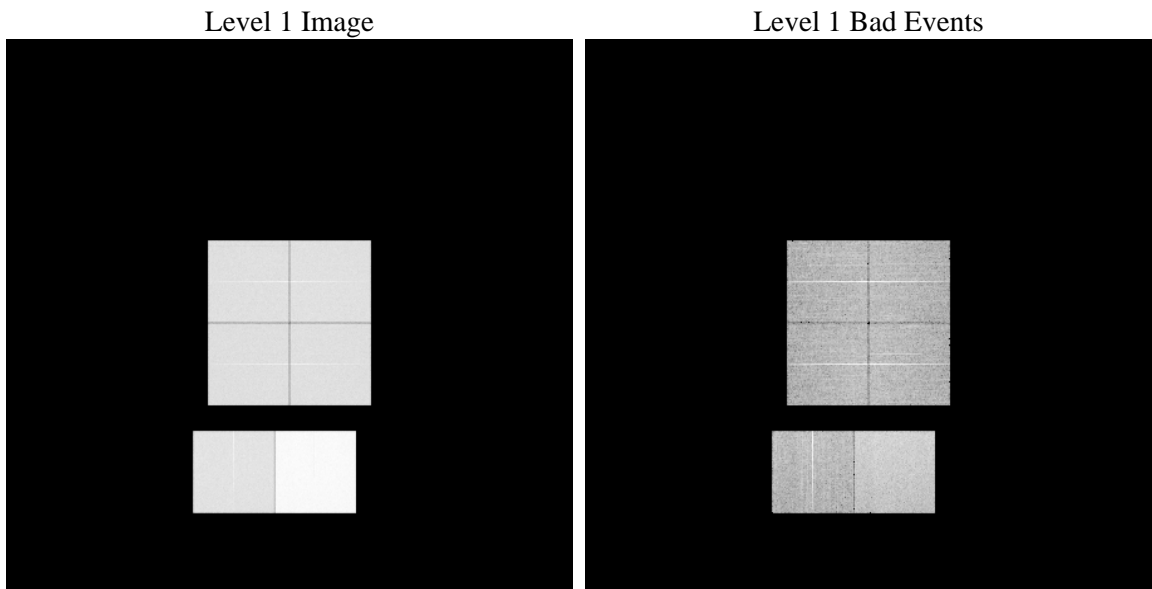
1 Front

seq_num	 	Sequence number
obs_id	62860	Observation id
title	ACIS-012367 diagnostics	Proposal title
observer	CHANDRA engineering request/realtime commanding	Principal investig
object	 	Source name
dtcycle	0	
cycle	P	events from which exps? Prim/Second/Both
ra_targ	0.0	Observer's specified target RA [deg]
dec_targ	0.0	Observer's specified target Dec [deg]
ra_nom	85.895350132864	Nominal RA [deg]
dec_nom	-68.368366691438	Nominal Dec [deg]
roll_nom	77.131242918541	Nominal Roll [deg]
revision	3	Processing version of data
ontime	22194.379410937	Sum of GTIs [s]
livetime	21913.340814985	Livetime [s]
ontime0	8927.8327627778	Sum of GTIs [s]
ontime1	9172.1345719099	Sum of GTIs [s]
ontime2	8538.8263223171	Sum of GTIs [s]
ontime3	8629.7399508804	Sum of GTIs [s]
ontime6	9514.3341032565	Sum of GTIs [s]
ontime7	22194.379410937	Sum of GTIs [s]
l2events	3867167	Number of level 2 events

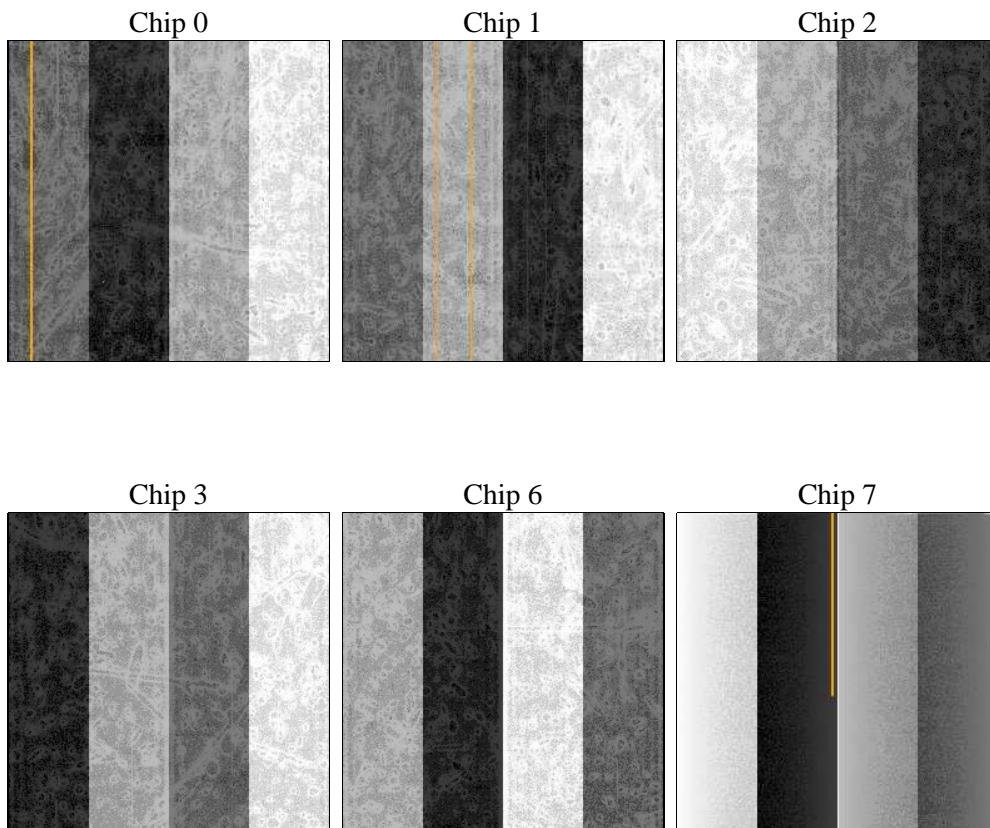
2 OBI

2.1 OBI

2.1.1 Images



2.1.2 Bias



2.1.3 Parameters

obi_num	0	Obi number	sched_exp_time	0.0	[s] Scheduled observation exposure time
ascdsver	8.4.5	Processing system revision	ontime	22194.379410937	Sum of GTIs [s]
caldsver	4.5.1.1	 	ontime0	8927.8327627778	Sum of GTIs [s]
date	2012-09-25T04:57:02	Date and time of file creation	ontime1	9172.1345719099	Sum of GTIs [s]
revision	3	Processing version of data	ontime2	8538.8263223171	Sum of GTIs [s]
			ontime3	8629.7399508804	Sum of GTIs [s]
			ontime6	9514.3341032565	Sum of GTIs [s]
			ontime7	22194.379410937	Sum of GTIs [s]
			l1events	4453897	Number of level 1 events

2.1.4 Events

	ccd 0	ccd 1	ccd 2	ccd 3	ccd 6	ccd 7		ccd 0	ccd 1	ccd 2	ccd 3	ccd 6	ccd 7
level 1 events	586754	602894	569677	579401	654137	1461034	grade 0 events	290751	298806	283139	289273	321471	346492
rejected events	60967	61692	61591	63695	65832	110502		49%	49%	49%	49%	49%	23%
rejected %	10%	10%	10%	10%	10%	7%	grade 1 events	1419	1408	1457	1440	1512	928
								0%	0%	0%	0%	0%	0%
							grade 2 events	93013	95842	89644	90334	102125	299575
								15%	15%	15%	15%	15%	20%
							grade 3 events	33133	34236	32110	32470	36525	137668
								5%	5%	5%	5%	5%	9%
							grade 4 events	33257	34310	31999	32725	36349	136530
								5%	5%	5%	5%	5%	9%
							grade 5 events	4375	4697	4299	4559	5093	22814
								0%	0%	0%	0%	0%	1%
							grade 6 events	76803	79111	72370	72242	93232	433512
								13%	13%	12%	12%	14%	29%
							grade 7 events	54003	54484	54659	56358	57830	83515
								9%	9%	9%	9%	8%	5%

2.2 Compared Parameters

Parameter	Planned	Actual	Parameter	Planned	Actual
Instrument	ACIS	ACIS	Obspar format version number	7	7
Detector	ACIS-012367	ACIS-012367	Obspar file type	PREDICTED	ACTUAL
Grating	NONE	NONE	Obspar update status	NONE	UPDATED
Data mode	FAINT	FAINT	On-chip summing requested	N	N
Observation mode	SECONDARY	SECONDARY	Subarray requested	NONE	NONE
[deg] Pointing RA	0	85.89535013286363	Alternating exposures requested	N	N
[deg] Pointing Dec	0	-68.36836669143773	[s] Primary exposure time	3.2	3.2
[deg] Pointing Roll	0.0	77.13124291854059			
[mm] SIM focus pos	-0.782348	-0.6828225247311905			
[mm] SIM defocus	0	0.8505141146731063			
[mm] SIM translation stage pos	-233.592463	250.466033080201			
[mm] SIM translation stage offset	0	-0.01005468664627074			
[s] Observation start time (MET)	118469757.633149	118469756.86468			
Observation start date	2001-10-03T04:15:58	2001-10-03T04:15:56			
[s] Observation end time (MET)	118496044.784193	118496044.01572			
Observation end date	2001-10-03T11:34:05	2001-10-03T11:34:04			
Read mode	TIMED	TIMED			

2.3 Star Slots

2.4 FID Slots

A Summary

A.1 Status

V&V Scientist	Beth Sundheim
V&V Date (YYYY-MM-DD)	2012.09.27
V&V Edition	1
V&V Disposition and Status	OK
V&V Charge Time	22.194379410937

A.2 Comments