

V&V Reference Report

L2 ASCDS Version : 7.6.9

Observation 62860 - L2 Version 001
Chandra X-Ray Center

L2 Processing Date : Jan 5 2007

Contents

1	Front	2
2	OBI	3
2.1	OBI	3
2.1.1	Images	3
2.1.2	Bias	3
2.1.3	Parameters	4
2.1.4	Events	4
2.2	Compared Parameters	5
2.3	Aspect	6
2.4	Star Slots	8
2.5	FID Slots	8
A	Summary	9
A.1	Status	9
A.2	Comments	9

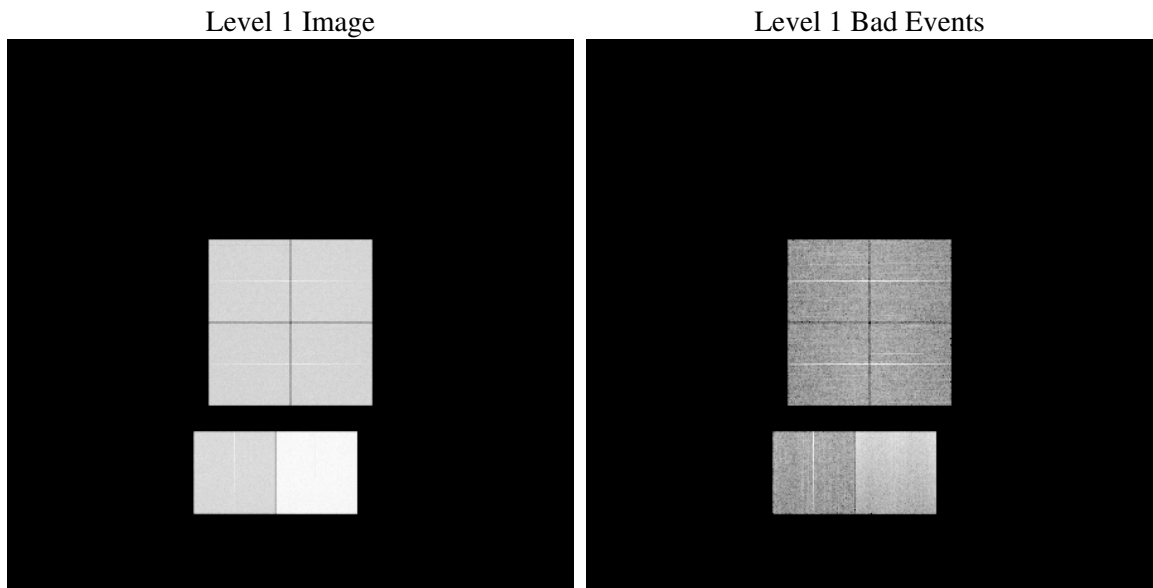
1 Front

seq_num	
obs_id	62860
title	ACIS-012367 diagnostics
observer	CHANDRA engineering request/realtime commanding
object	
dtcycle	0
cycle	P
ra_targ	0.0
dec_targ	0.0
ra_nom	85.89535012658
dec_nom	-68.368366692294
roll_nom	77.131242912703
revision	2
ontime	22194.219559446
livetime	21913.18298763
ontime0	8928.5236911029
ontime1	9171.6411253959
ontime2	8539.6814106256
ontime3	8630.2667191923
ontime6	9515.2712715715
ontime7	22194.219559446
l2events	3823716

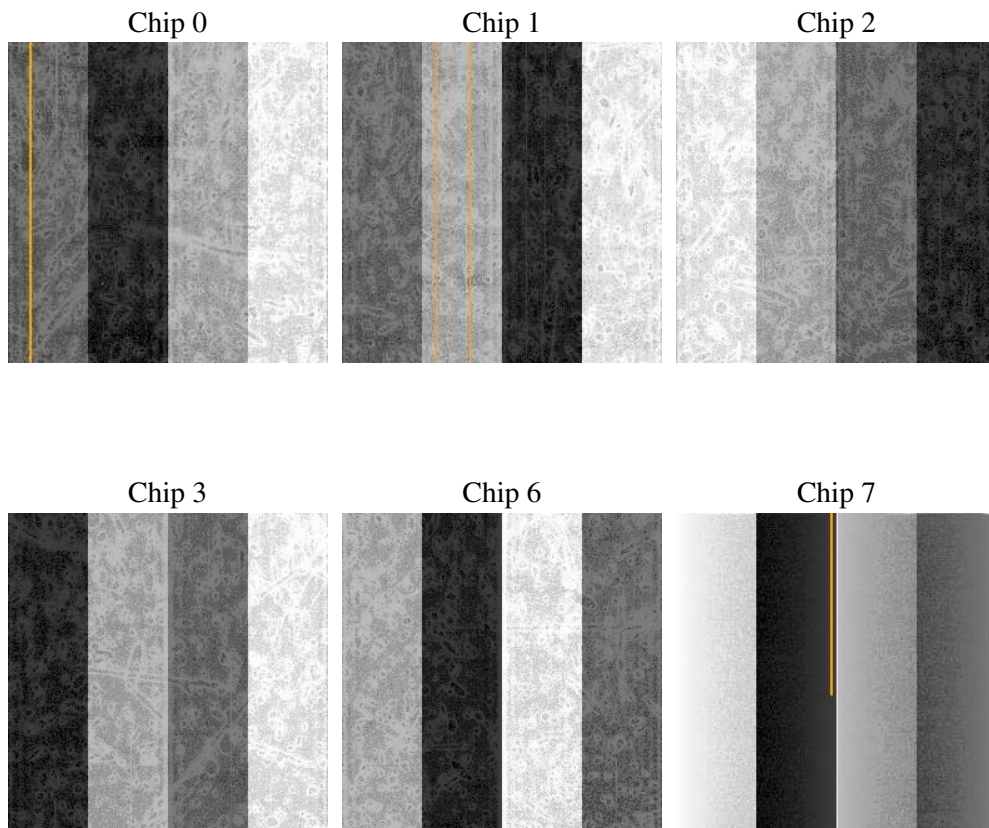
2 OBI

2.1 OBI

2.1.1 Images



2.1.2 Bias



2.1.3 Parameters

obi_num	0
ascdsver	7.6.9
caldbver	3.2.4
date	2007-01-05T17:27:16
revision	2

sched_exp_time	0.0
ontime	22246.235542461
ontime0	8948.5044175535
ontime1	9191.5807620287
ontime2	8559.5800570846
ontime3	8653.5705656409
ontime6	9538.3699180186
ontime7	22246.235542461
l1events	4453897

2.1.4 Events

	ccd 0	ccd 1	ccd 2	ccd 3	ccd 6	ccd 7
level 1 events	586754	602894	569677	579401	654137	1461034
rejected events	60968	61688	61592	63697	65832	154360
rejected %	10%	10%	10%	10%	10%	10%

	ccd 0	ccd 1	ccd 2	ccd 3	ccd 6	ccd 7
grade 0 events	290758	298823	283152	289284	321492	247554
	49%	49%	49%	49%	49%	16%
grade 1 events	1420	1410	1460	1440	1512	576
	0%	0%	0%	0%	0%	0%
grade 2 events	93005	95825	89631	90323	102104	390959
	15%	15%	15%	15%	15%	26%
grade 3 events	33136	34240	32112	32474	36533	99663
	5%	5%	5%	5%	5%	6%
grade 4 events	33259	34314	32001	32731	36352	98198
	5%	5%	5%	5%	5%	6%
grade 5 events	4378	4696	4299	4561	5097	21859
	0%	0%	0%	0%	0%	1%
grade 6 events	76798	79107	72365	72230	93221	473446
	13%	13%	12%	12%	14%	32%
grade 7 events	54000	54479	54657	56358	57826	128779
	9%	9%	9%	9%	8%	8%

2.2 Compared Parameters

Parameter	Planned	Actual	Parameter	Planned	Actual
Instrument	ACIS	ACIS	Obspar format version number	6	6
Detector	ACIS-012367	ACIS-012367	Obspar file type	PREDICTED	ACTUAL
Grating	NONE	NONE	Obspar update status	NONE	UPDATED
Data mode	FAINT	FAINT	On-chip summing requested	N	N
Observation mode	SECONDARY	SECONDARY	Subarray requested	NONE	NONE
Pointing RA	0	85.89535012657961	Alternating exposures requested	N	N
Pointing Dec	0	-68.36836669229353	Primary exposure time	3.2	3.2
Pointing Roll	0.0	77.13124291270293			
SIM focus pos (mm)	-0.782348	-0.6828225247311905			
SIM defocus (mm)	0	0.8505141146731063			
SIM translation stage pos (mm)	-233.592463	250.466033080201			
SIM translation stage offset (mm)	0	-0.01005468664627074			
Observation start time	118469757.633149	118469756.86468			
Observation start date	2001-10-03T04:15:58	2001-10-03T04:15:56			
Observation end time	118496044.784193	118496044.01572			
Observation end date	2001-10-03T11:34:05	2001-10-03T11:34:04			
Read mode	TIMED	TIMED			

2.3 Aspect

2.4 Star Slots

2.5 FID Slots

A Summary

A.1 Status

V&V Scientist	Beth Sundheim
V&V Date (YYYY-MM-DD)	2007.01.05
V&V Edition	1
V&V Disposition and Status	OK
V&V Charge Time	22.1942195

A.2 Comments