

V&V Reference Report

L2 ASCDS Version : 8.5.1

Observation 6250 - L2 Version 3
Chandra X-Ray Center

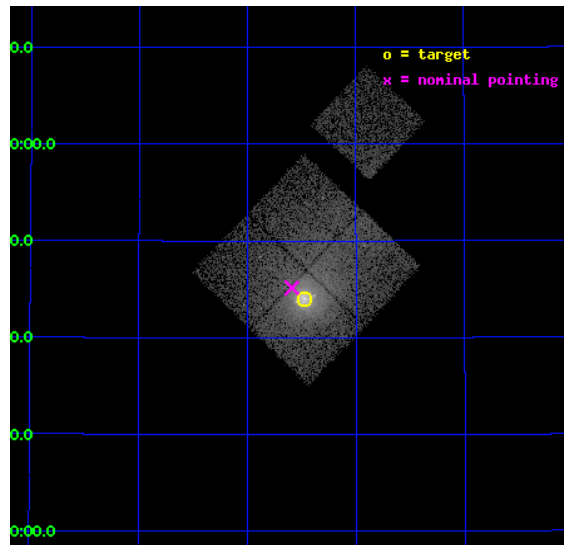
L2 Processing Date : Dec 17 2012

Contents

1	Front	2
2	OBI	3
2.1	OBI	3
2.1.1	Images	3
2.1.2	Bias	3
2.1.3	Parameters	4
2.1.4	Events	4
2.2	Compared Parameters	5
2.3	Aspect	6
2.4	Star Slots	9
2.4.1	Slot 3	9
2.4.2	Slot 4	10
2.4.3	Slot 5	11
2.4.4	Slot 6	12
2.4.5	Slot 7	13
2.5	FID Slots	14
2.5.1	Slot 0	14
2.5.2	Slot 1	15
2.5.3	Slot 2	16
A	Summary	17
A.1	Status	17
A.2	Comments	17

1 Front

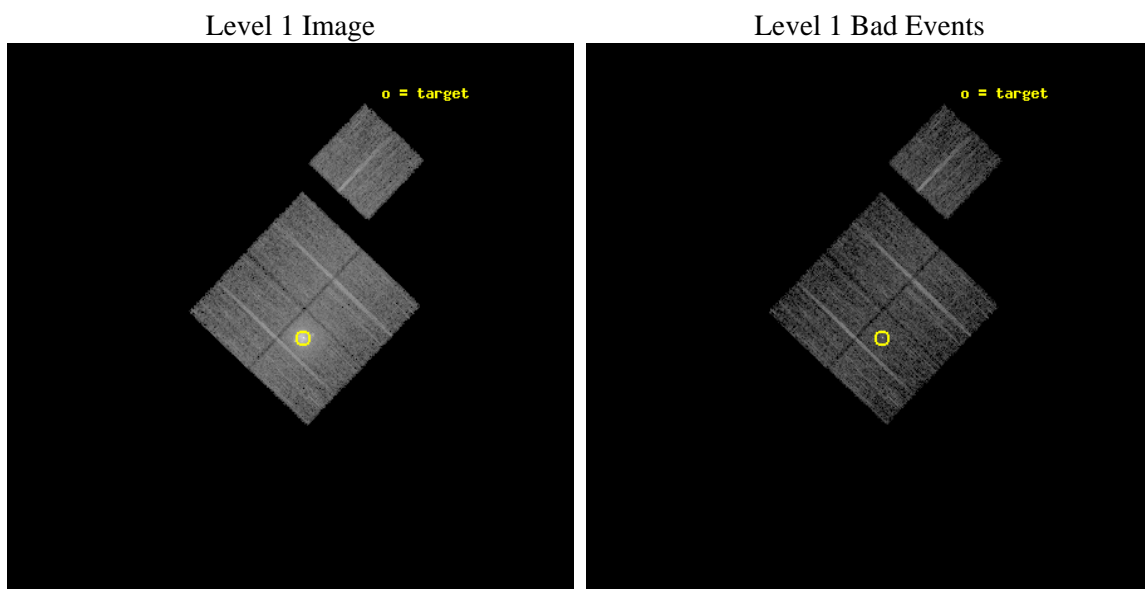
seq_num	800540	Sequence number
obs_id	6250	Observation id
title	Cygnus A --- Shock Heating of the Intra-Cluster Medium	Proposal ti
observer	Dr Andrew Young	Principal investigator
object	Cygnus A	Source name
dtcycle	0	
cycle	P	events from which exps? Prim/Second/Both
ra_targ	299.867917	Observer's specified target RA [deg]
dec_targ	40.733889	Observer's specified target Dec [deg]
ra_nom	299.89754842898	Nominal RA [deg]
dec_nom	40.752724545939	Nominal Dec [deg]
roll_nom	43.689366007484	Nominal Roll [deg]
revision	3	Processing version of data
ontime	7049.3589962721	Sum of GTIs [s]
livetime	6957.2539313232	Livetime [s]
ontime0	7052.4999864101	Sum of GTIs [s]
ontime1	7049.3589962721	Sum of GTIs [s]
ontime2	7052.4999864101	Sum of GTIs [s]
ontime3	7049.3590261638	Sum of GTIs [s]
ontime6	7052.4999864101	Sum of GTIs [s]
l2events	64443	Number of level 2 events



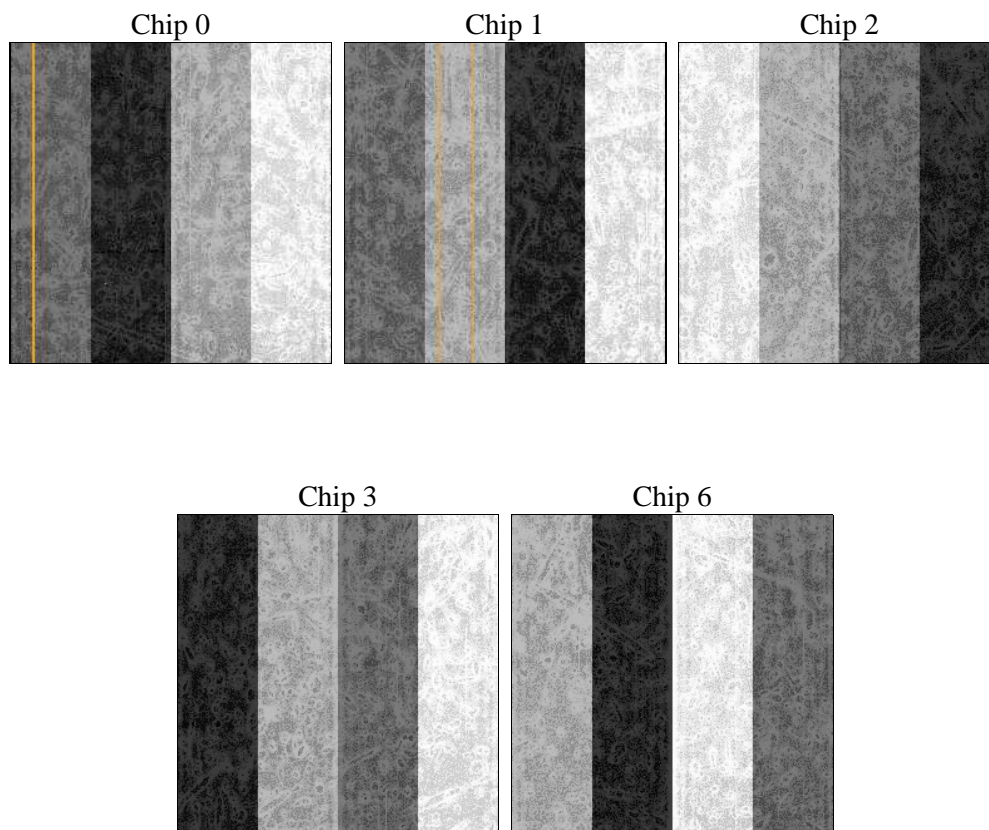
2 OBI

2.1 OBI

2.1.1 Images



2.1.2 Bias



2.1.3 Parameters

obi_num	0	Obi number	sched_exp_time	7000.000000	[s] Scheduled observation exposure time
ascdsver	8.5.1	Processing system revision	ontime	7049.3589962721	Sum of GTIs [s]
caldsver	4.5.5	 	ontime0	7052.4999864101	Sum of GTIs [s]
date	2012-12-17T16:55:43	Date and time of file creation	ontime1	7049.3589962721	Sum of GTIs [s]
revision	3	Processing version of data	ontime2	7052.4999864101	Sum of GTIs [s]
			ontime3	7049.3590261638	Sum of GTIs [s]
			ontime6	7052.4999864101	Sum of GTIs [s]
			l1events	252334	Number of level 1 events

2.1.4 Events

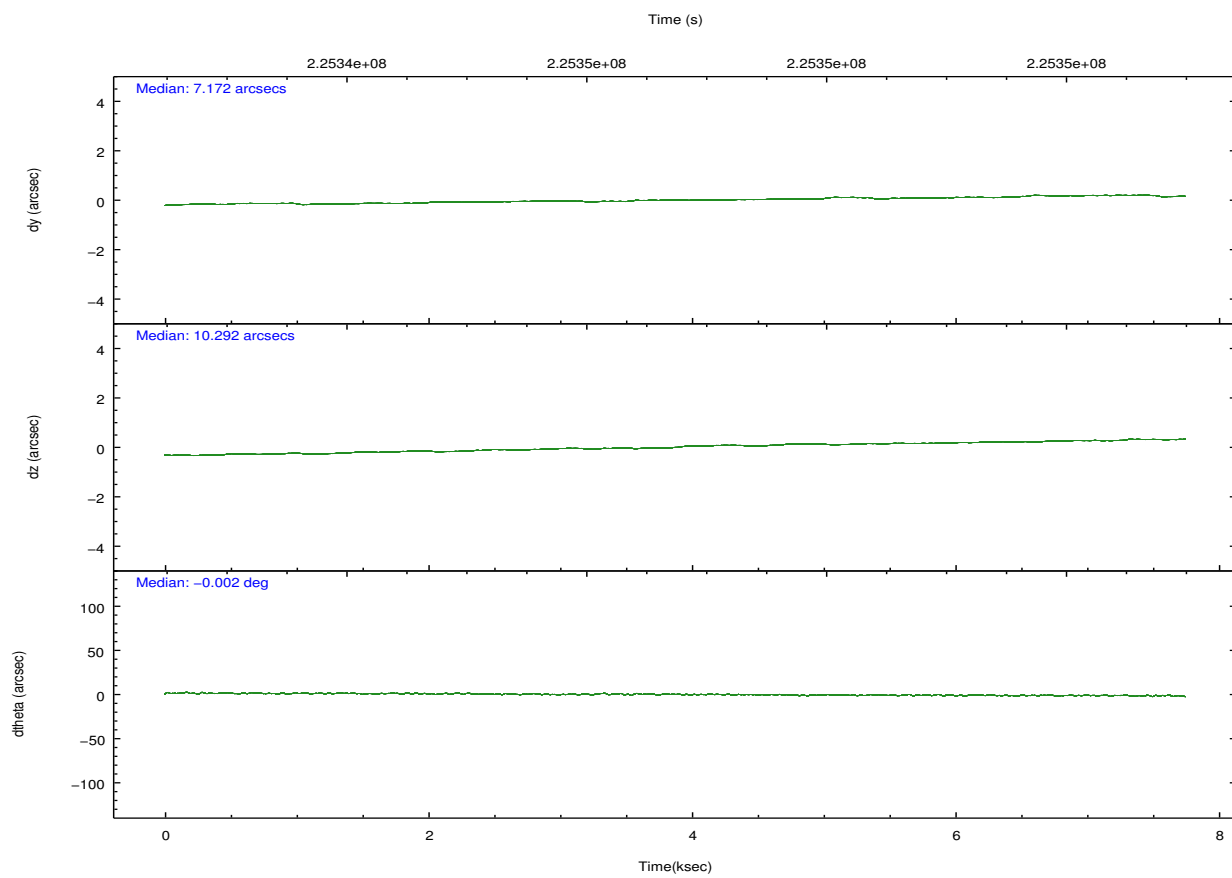
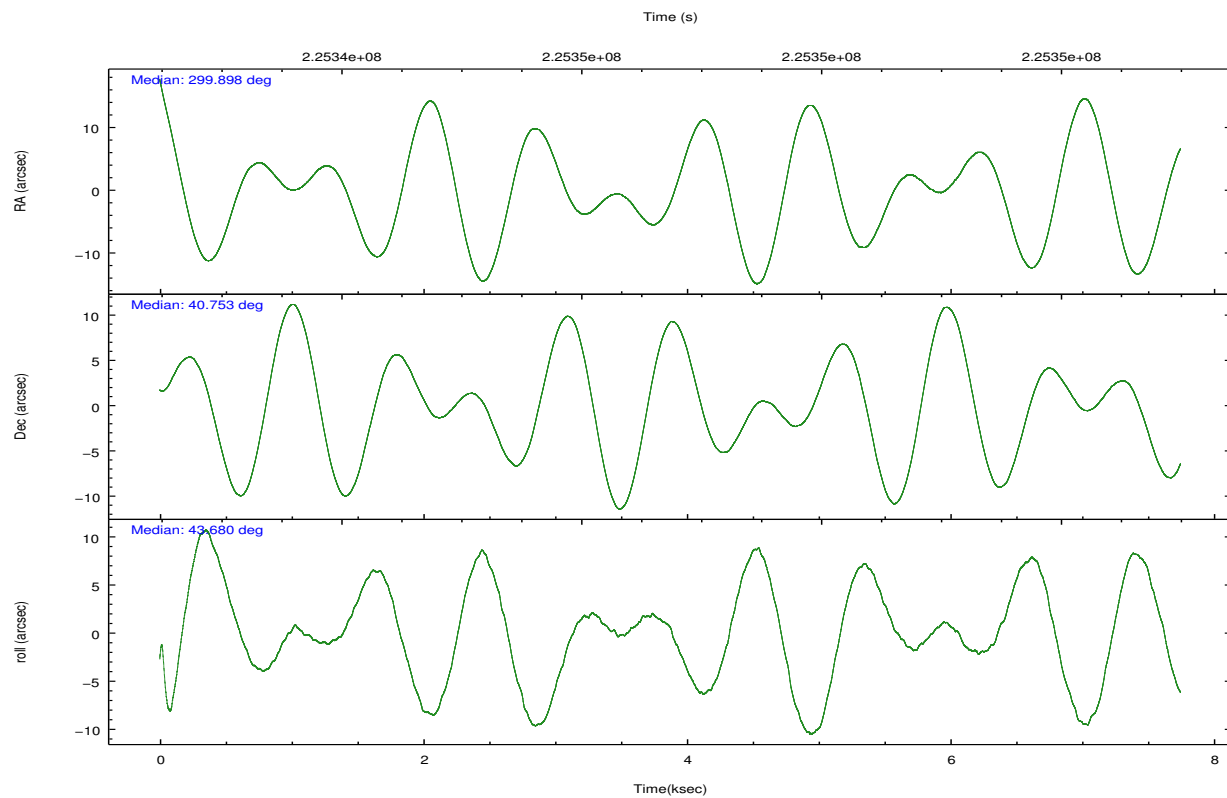
	ccd 0	ccd 1	ccd 2	ccd 3	ccd 6
level 1 events	43317	73098	45074	48579	42266
rejected events	34771	35925	36329	37300	37221
rejected %	80%	49%	80%	76%	88%

	ccd 0	ccd 1	ccd 2	ccd 3	ccd 6
grade 0 events	4905	26943	5210	7191	2149
	11%	36%	11%	14%	5%
grade 1 events	39	211	34	50	15
	0%	0%	0%	0%	0%
grade 2 events	1447	4722	1403	1637	974
	3%	6%	3%	3%	2%
grade 3 events	681	1696	612	681	492
	1%	2%	1%	1%	1%
grade 4 events	568	1663	579	716	495
	1%	2%	1%	1%	1%
grade 5 events	1552	1775	1494	1743	1696
	3%	2%	3%	3%	4%
grade 6 events	954	2160	942	1058	935
	2%	2%	2%	2%	2%
grade 7 events	33171	33928	34800	35503	35510
	76%	46%	77%	73%	84%

2.2 Compared Parameters

Parameter	Planned	Actual	Parameter	Planned	Actual
Instrument	ACIS	ACIS	Obspar format version number	7	7
Detector	ACIS-01236	ACIS-01236	Obspar file type	PREDICTED	ACTUAL
Grating	NONE	NONE	Obspar update status	NONE	UPDATED
Data mode	VFAINT	VFAINT	Number of optional ACIS chips dropped	0	0
Observation mode	POINTING	POINTING	On-chip summing requested	N	N
[deg] Pointing RA	299.887572	299.8975484289845	Subarray requested	NONE	NONE
[deg] Pointing Dec	40.726424	40.7527245459387	Alternating exposures requested	N	N
[deg] Pointing Roll	43.487167	43.68936600748375	[s] Primary exposure time	0.000000	3.1
[mm] SIM focus pos	-0.782348	-0.7809083437167272			
[mm] SIM defocus	0	0.001439871863259334			
[mm] SIM translation stage pos	-242.392463	-242.3975952774949			
[mm] SIM translation stage offset	8.800000000000001	8.805142274565242			
[s] Observation start time (MET)	225343605.184000	225342396.03652			
Observation start date	2005-02-21T03:25:41	2005-02-21T03:06:36			
[s] Observation end time (MET)	225350605.184000	225351695.34944			
Observation end date	2005-02-21T05:22:21	2005-02-21T05:41:35			
Read mode	TIMED	TIMED			

2.3 Aspect

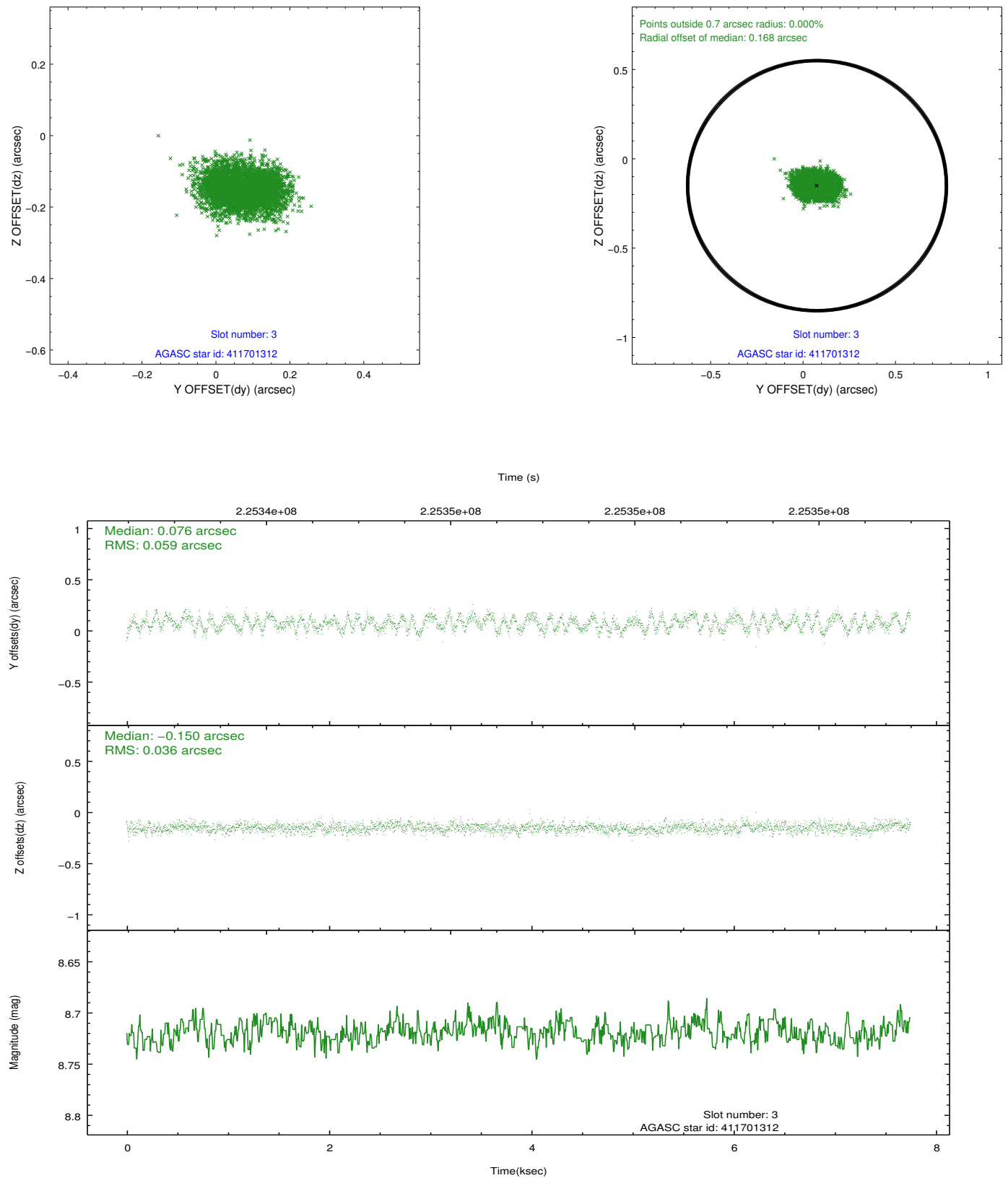


Slot Statistics

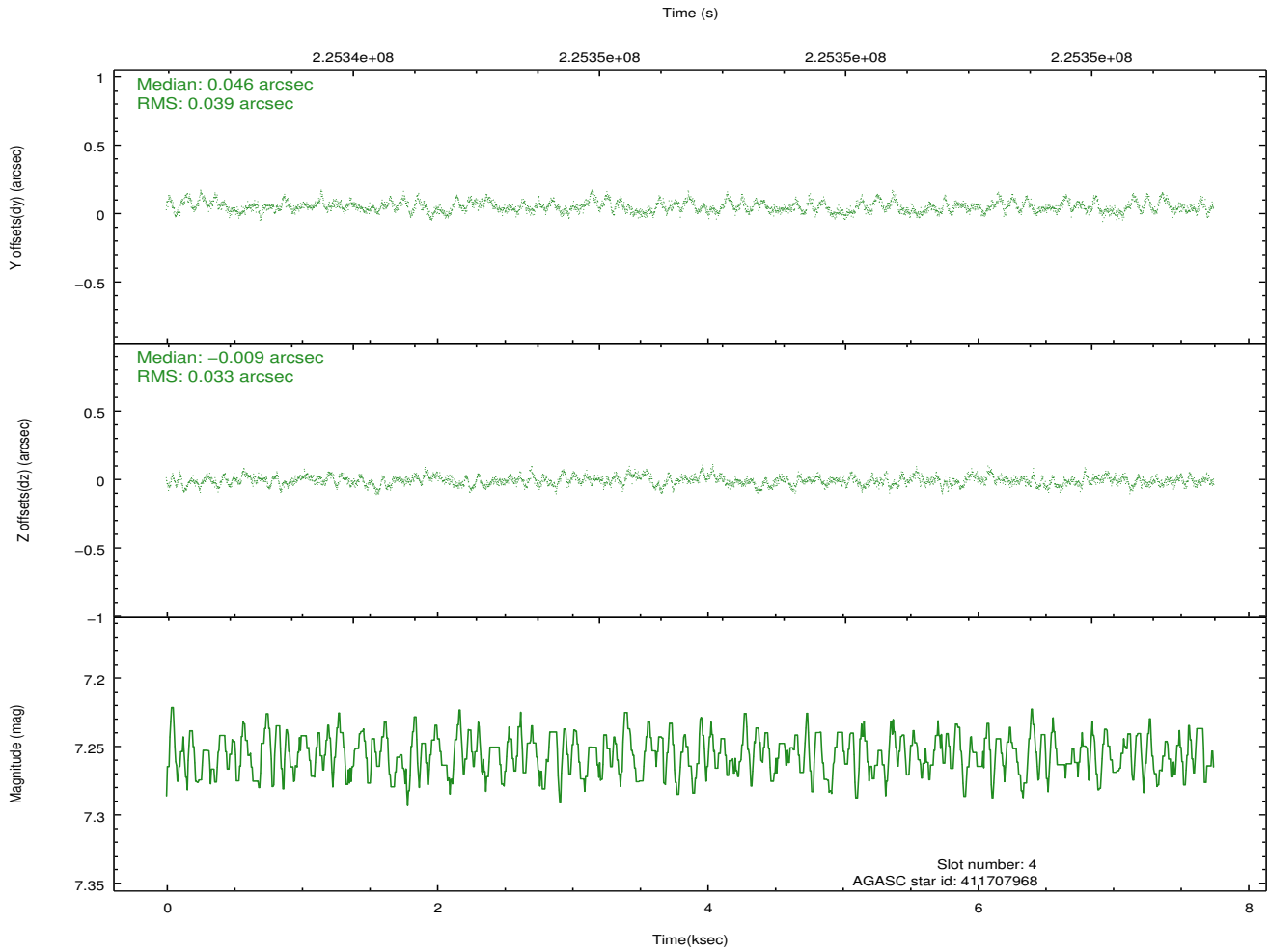
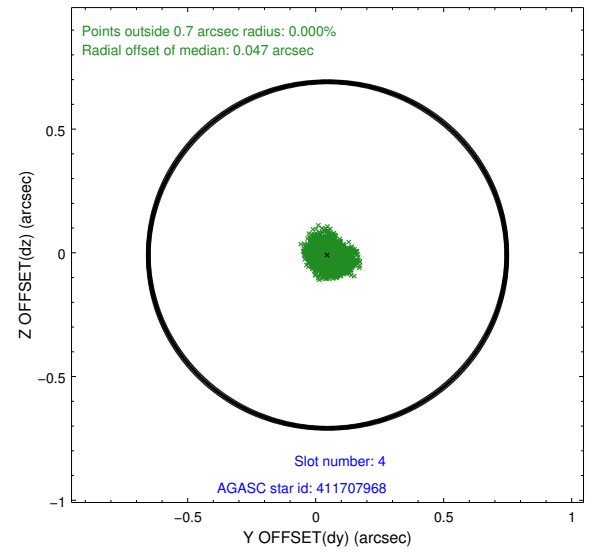
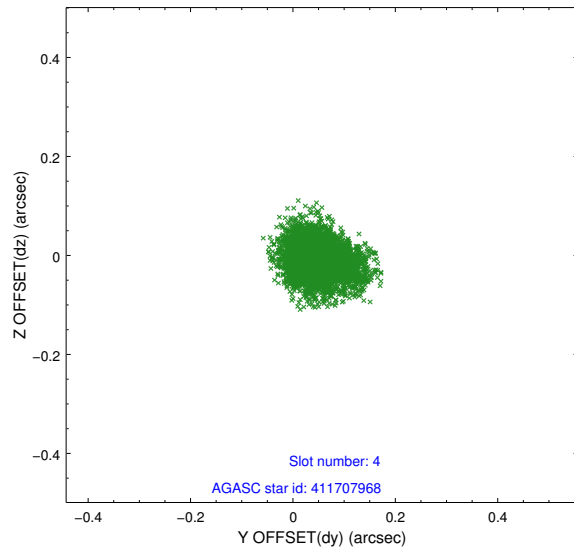
slot	status	id	mag	n_pts	med_dy	med_dz	dr1	dr2	ra	dec	mean_y	mean_z
0	FID	ACIS-I-1	7.28	1890	-0.040	0.099	0.010	0.016	0.000000	0.000000	932.62	-652.70
1	FID	ACIS-I-5	7.23	1888	-0.098	0.012	0.006	0.011	0.000000	0.000000	-1815.13	1244.44
2	FID	ACIS-I-6	7.24	1890	0.047	-0.041	0.010	0.016	0.000000	0.000000	397.47	1889.70
3	GUIDE	411701312	8.72	3779	0.076	-0.150	0.075	0.118	298.889956	40.820220	-1728.67	2126.27
4	GUIDE	411707968	7.26	3780	0.046	-0.009	0.054	0.089	299.509933	40.926839	-247.31	1232.56
5	GUIDE	413405352	8.35	3780	0.002	-0.195	0.058	0.092	300.290830	41.091941	1701.40	204.00
6	GUIDE	413418680	9.30	3776	0.036	0.244	0.095	0.155	300.860298	40.740057	1969.75	-1779.04
7	GUIDE	413421016	8.71	3778	-0.161	0.109	0.068	0.111	300.612426	40.446254	753.33	-2092.68

2.4 Star Slots

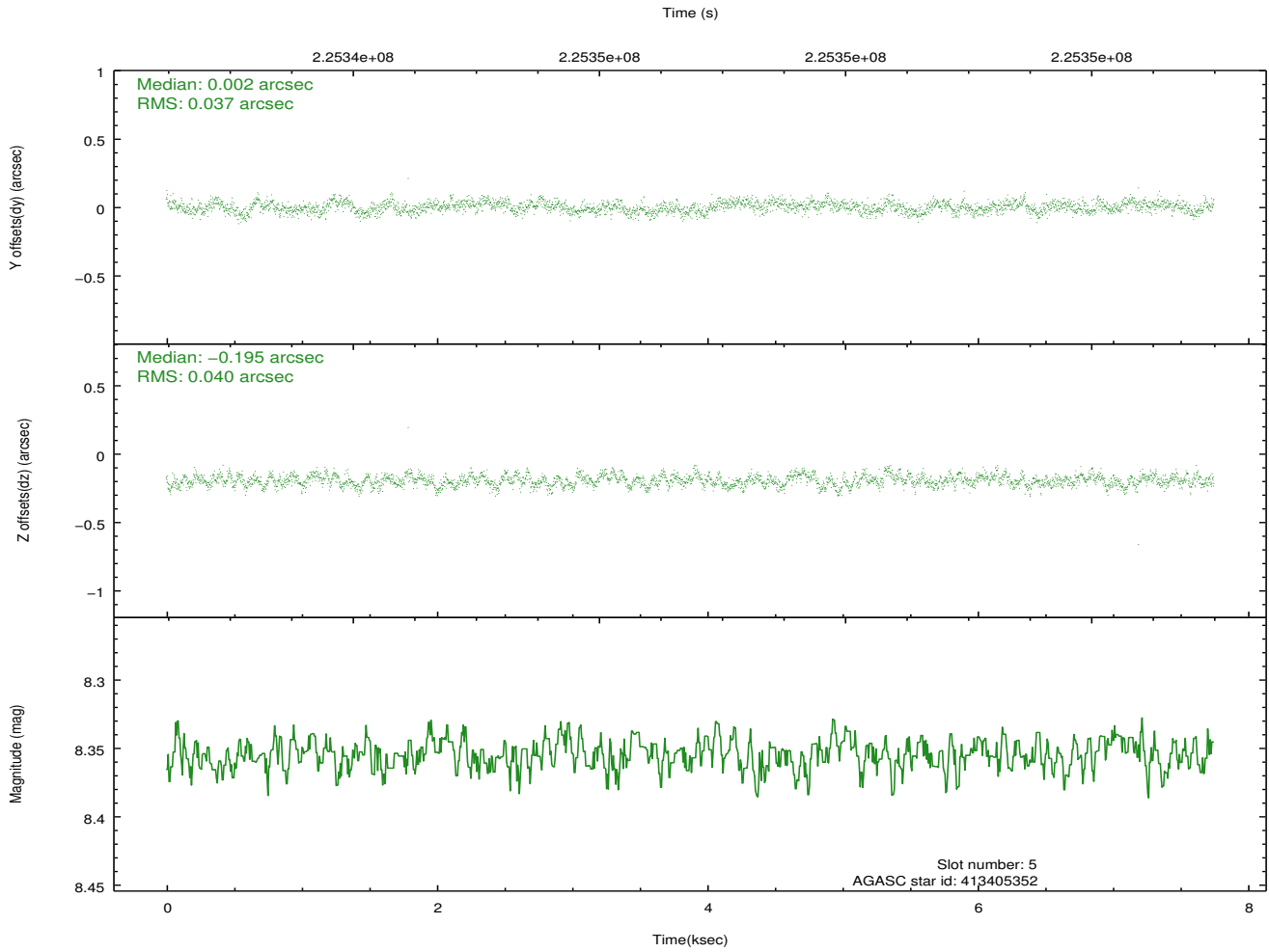
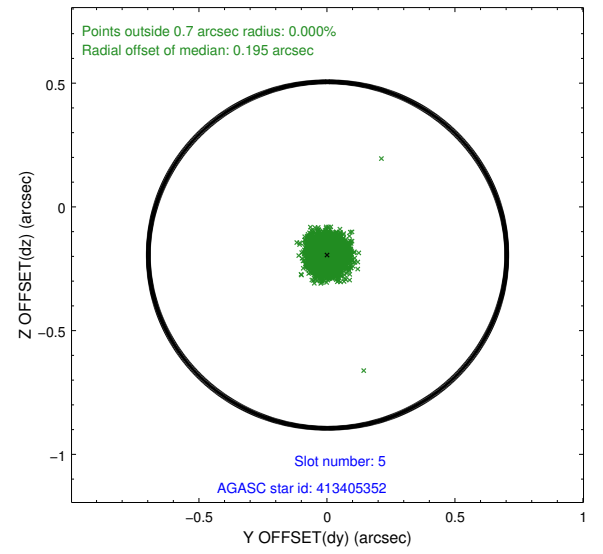
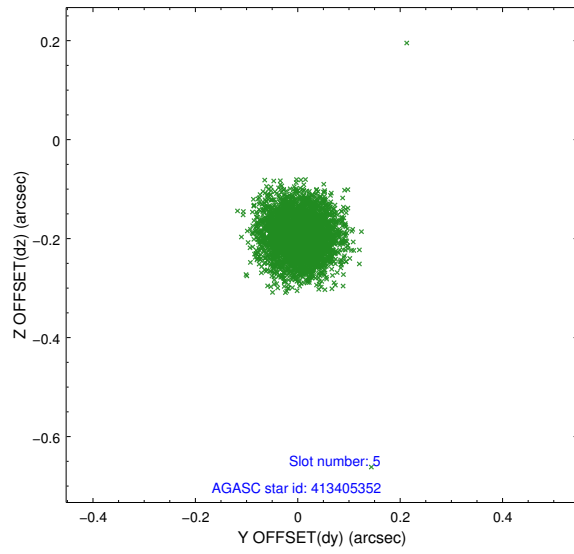
2.4.1 Slot 3



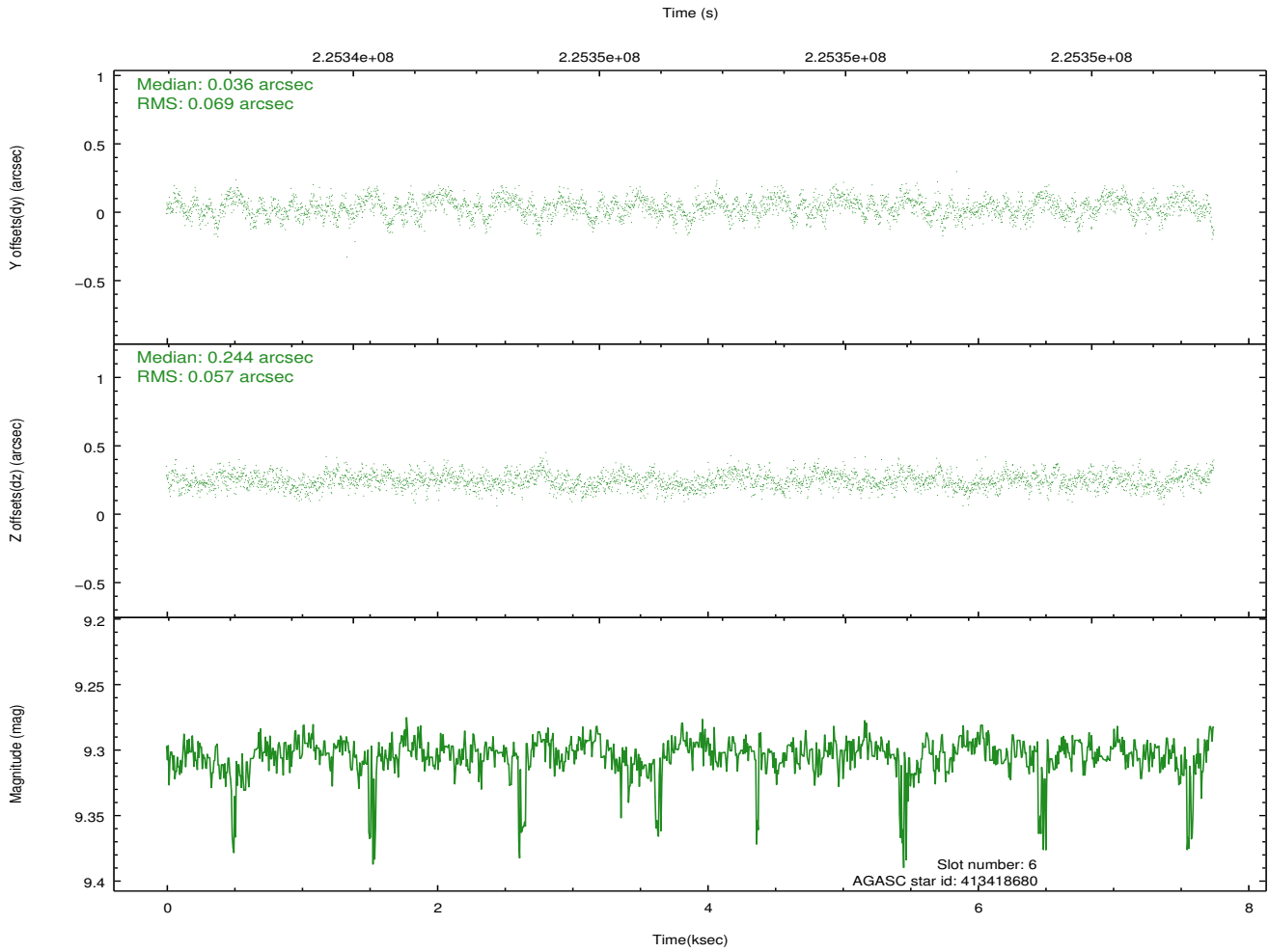
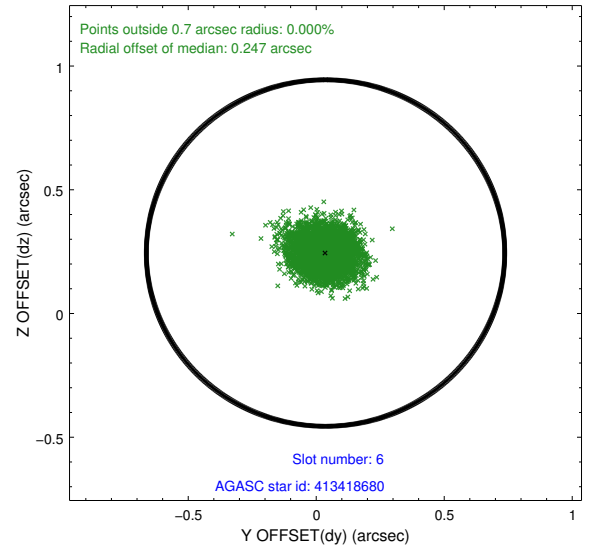
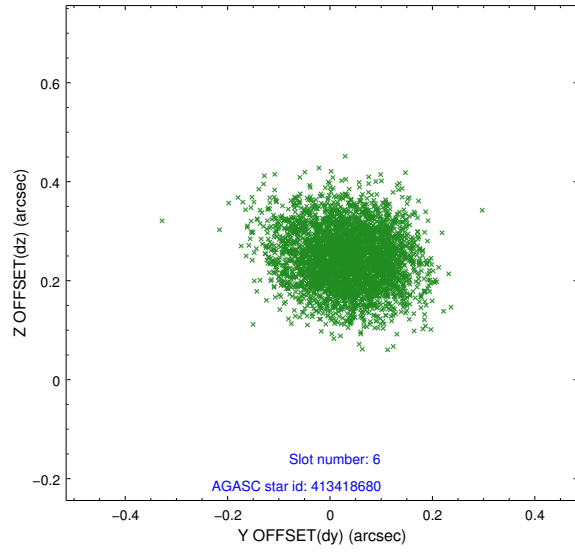
2.4.2 Slot 4



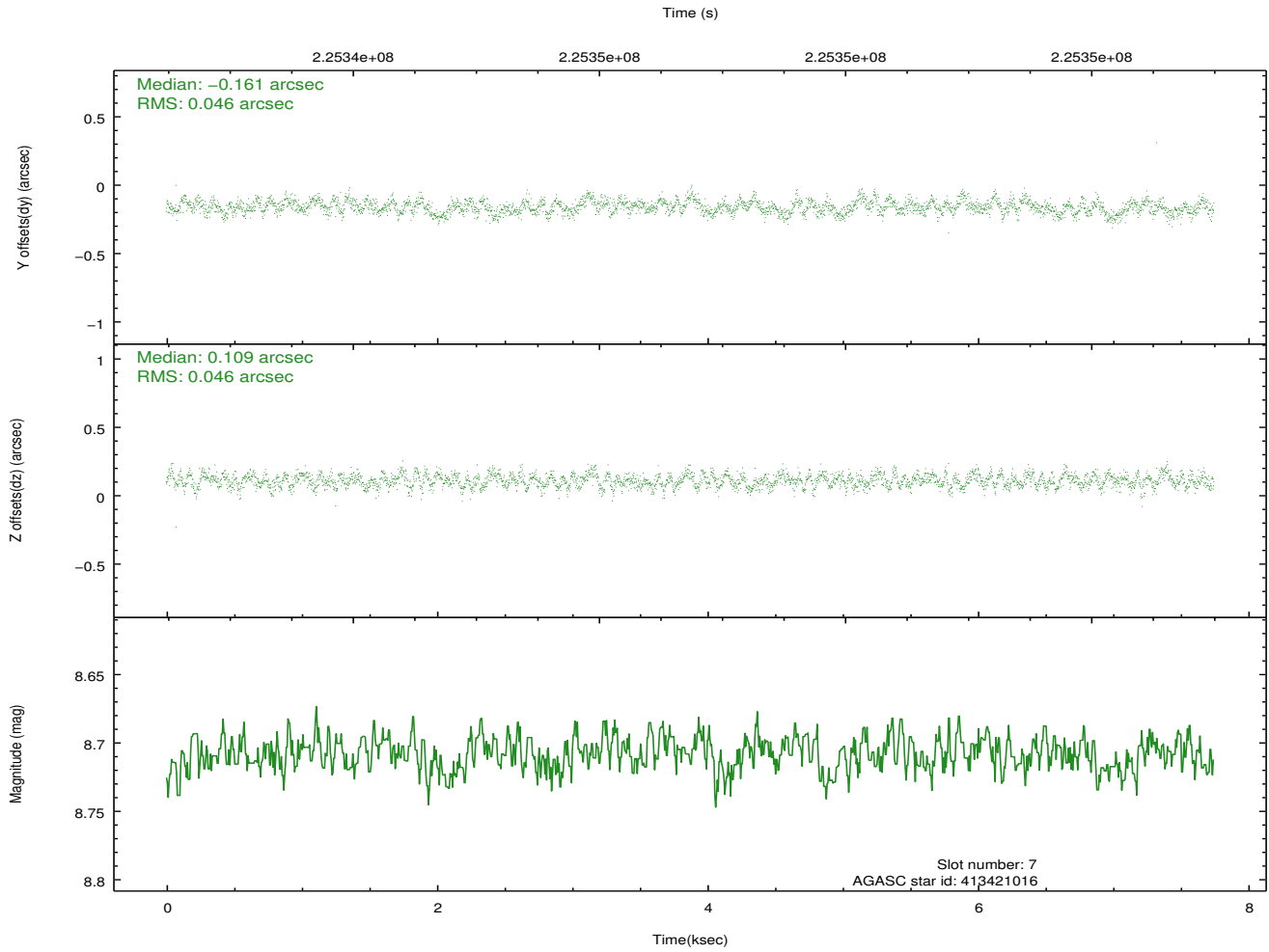
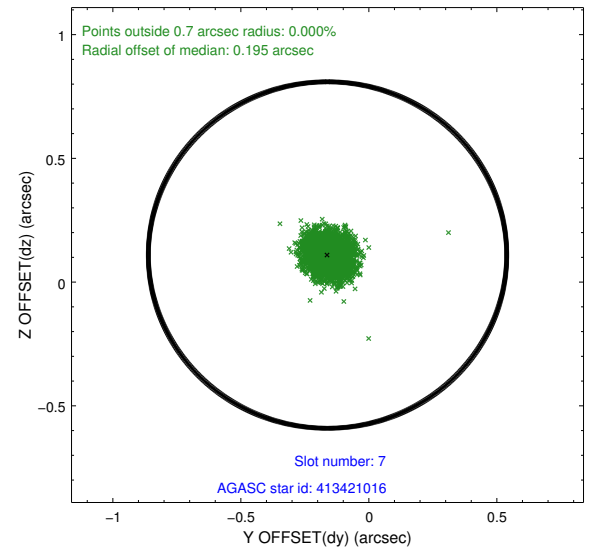
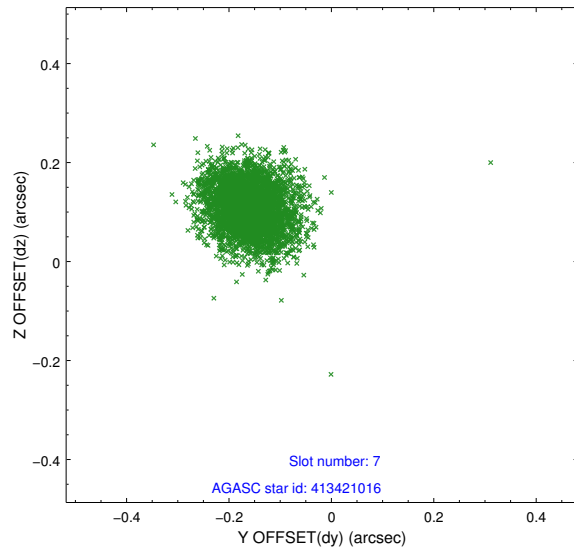
2.4.3 Slot 5



2.4.4 Slot 6

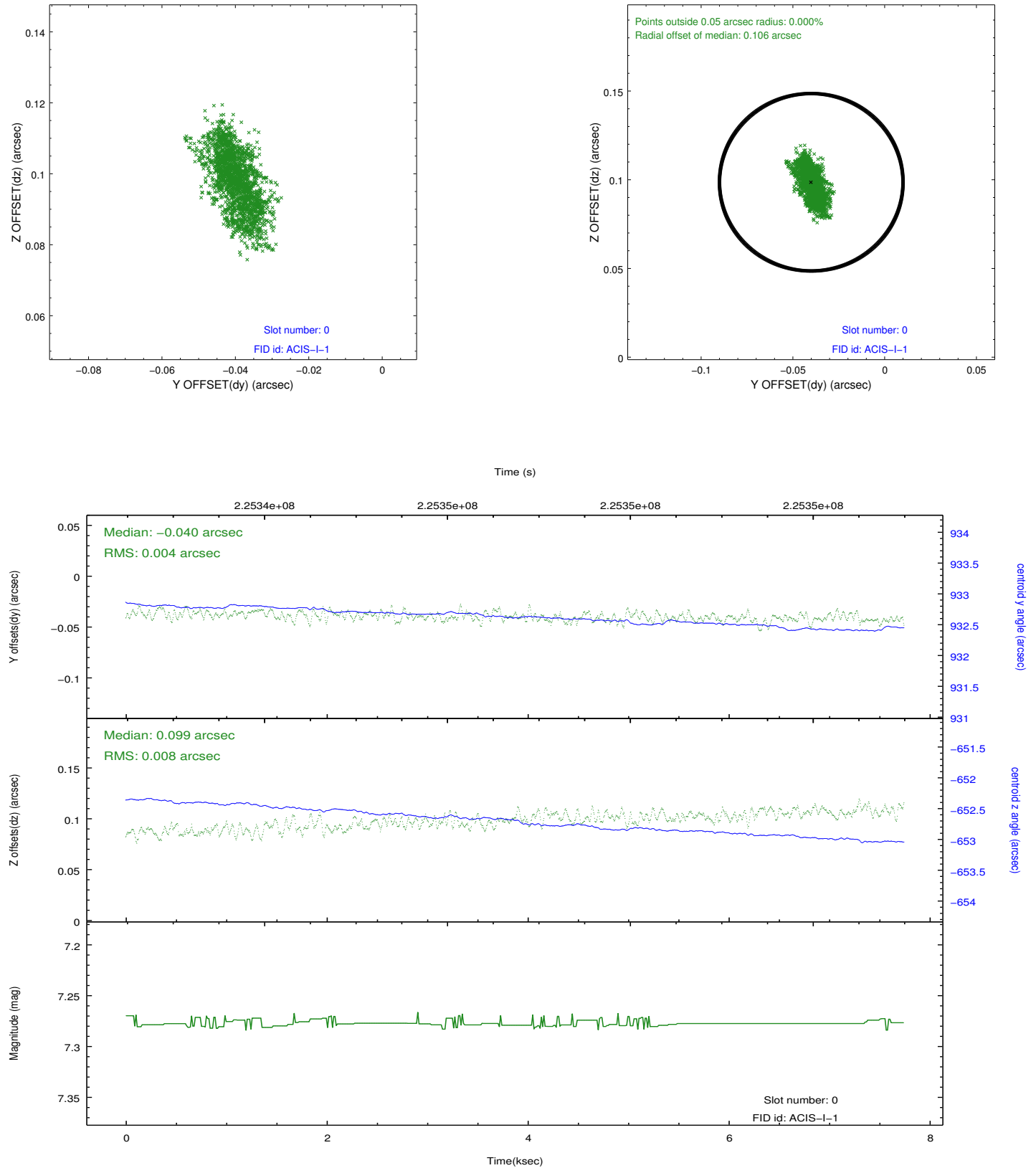


2.4.5 Slot 7

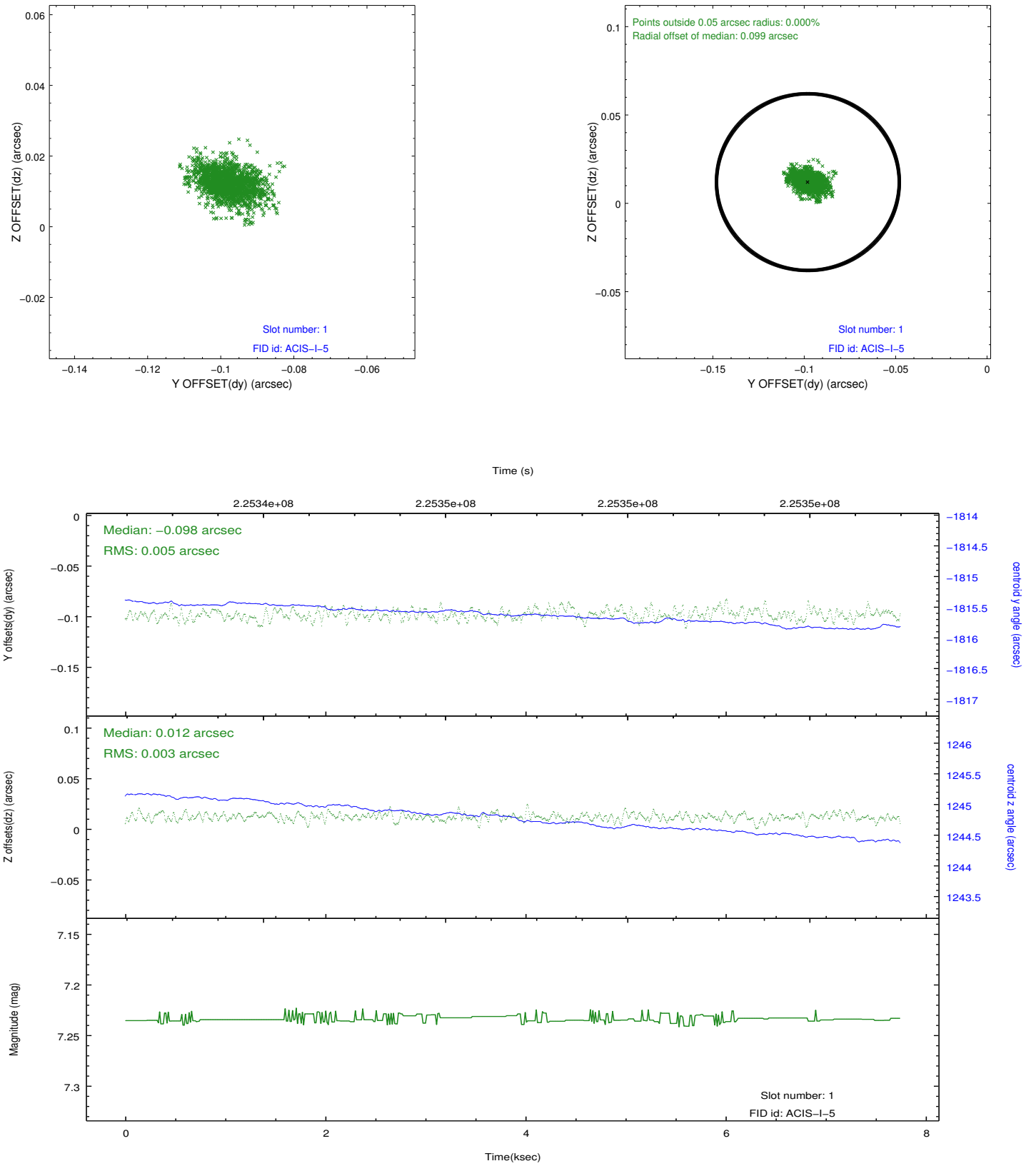


2.5 FID Slots

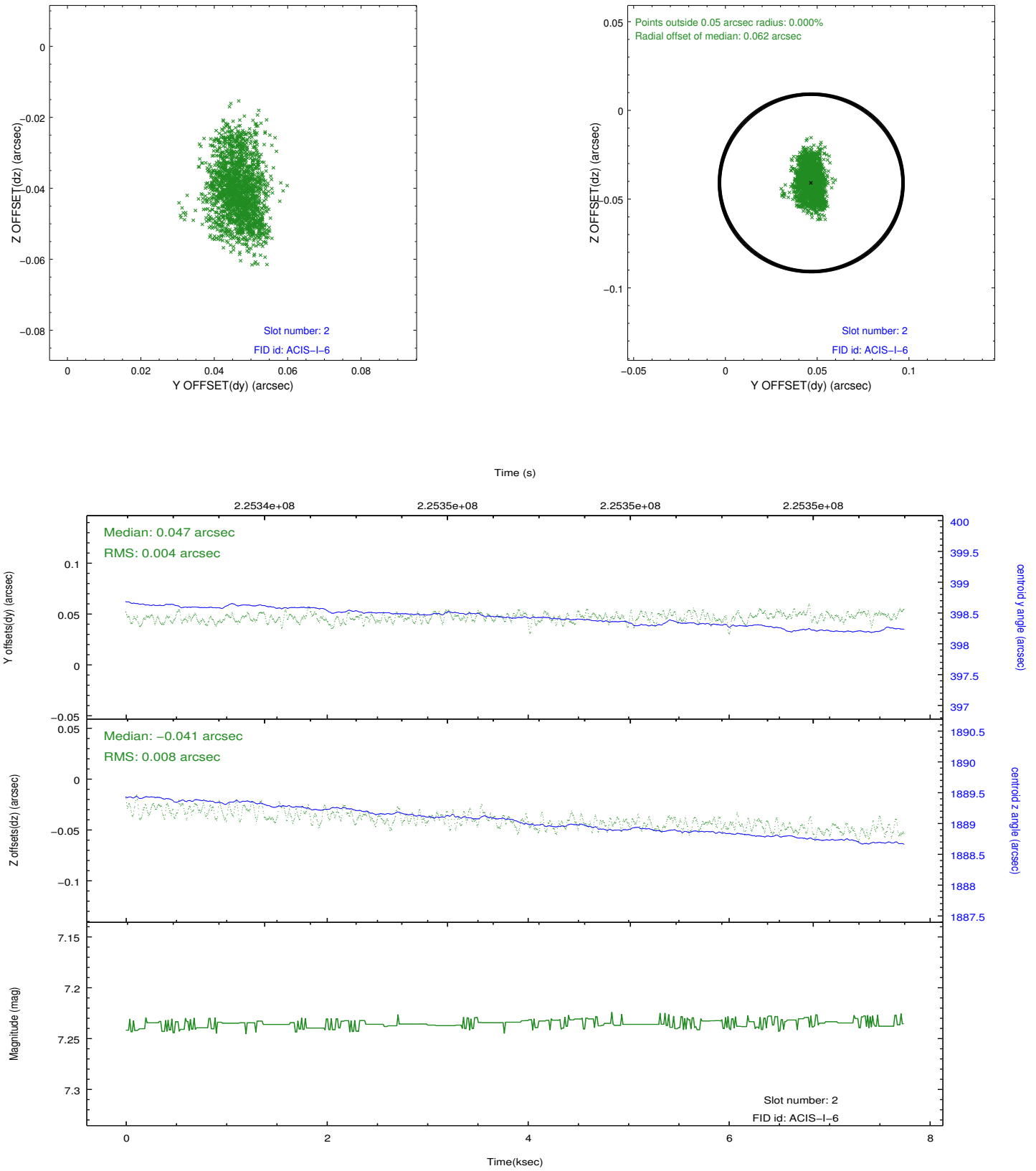
2.5.1 Slot 0



2.5.2 Slot 1



2.5.3 Slot 2



A Summary

A.1 Status

V&V Scientist	Jen Lauer
V&V Date (YYYY-MM-DD)	2013.01.10
V&V Edition	1
V&V Disposition and Status	OK
V&V Charge Time	7.049358

A.2 Comments