

V&V Reference Report

L2 ASCDS Version : 8.1.2

Observation 62210 - L2 Version 3

Chandra X-Ray Center

L2 Processing Date : Dec 5 2009

Contents

1	Front	2
2	OBI	3
2.1	OBI	3
2.1.1	Images	3
2.1.2	Bias	3
2.1.3	Parameters	4
2.1.4	Events	4
2.2	Compared Parameters	5
2.3	Star Slots	6
2.4	FID Slots	6
A	Summary	7
A.1	Status	7
A.2	Comments	7

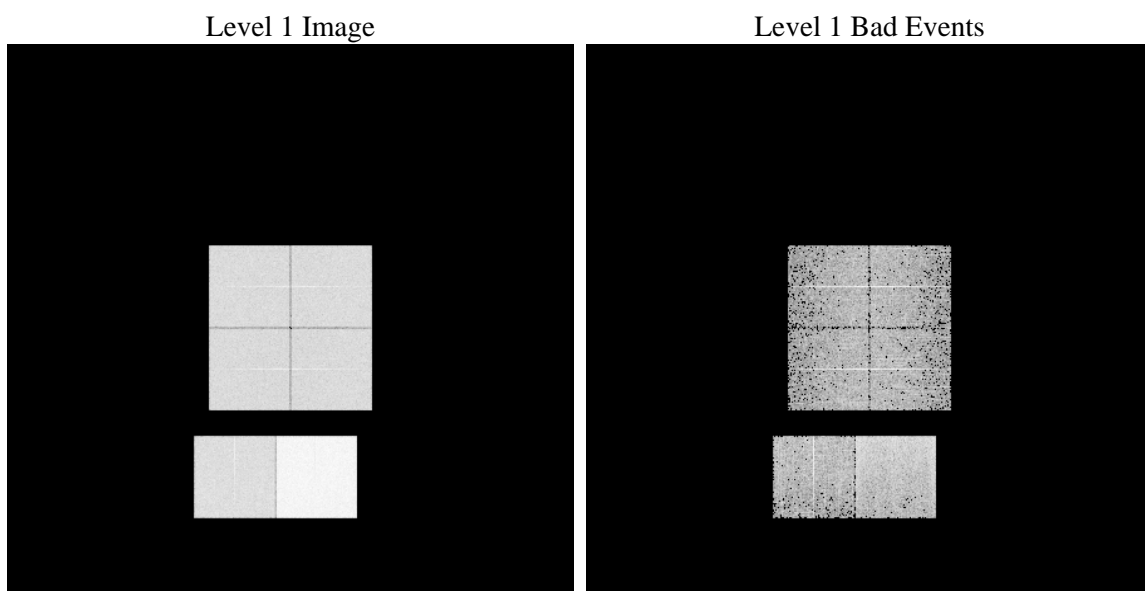
1 Front

seq_num	 	Sequence number
obs_id	62210	Observation id
title	ACIS-012367 diagnostics	Proposal title
observer	CHANDRA engineering request/realtime commanding	Principal investig
object	 	Source name
dtcycle	0	
cycle	P	events from which exps? Prim/Second/Both
ra_targ	0.0	Observer's specified target RA
dec_targ	0.0	Observer's specified target Dec
ra_nom	131.37464665713	Nominal RA
dec_nom	34.345759878859	Nominal Dec
roll_nom	151.36554897365	Nominal Roll
revision	3	Processing version of data
ontime	3555.3988446072	Sum of GTIs [s]
livetime	3510.3782436326	Livetime [s]
ontime0	1442.2614064589	Sum of GTIs [s]
ontime1	1439.0202766657	Sum of GTIs [s]
ontime2	1377.0136541054	Sum of GTIs [s]
ontime3	1383.6599439755	Sum of GTIs [s]
ontime6	1549.2156368792	Sum of GTIs [s]
ontime7	3555.3988446072	Sum of GTIs [s]
l2events	916915	Number of level 2 events

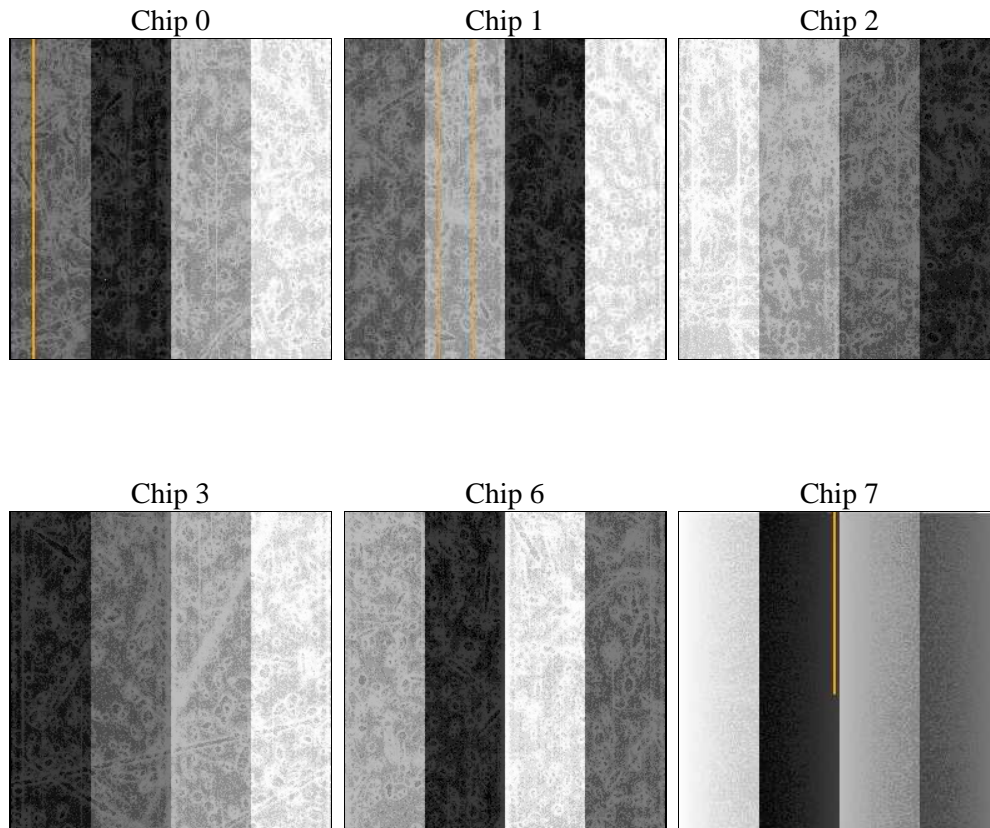
2 OBI

2.1 OBI

2.1.1 Images



2.1.2 Bias



2.1.3 Parameters

obi_num	0	Obi number		
ascdsver	8.1.2	ASCDS version number	sched_exp_time	0.0
caldsver	4.1.4	 		Scheduled observation exposure time
date	2009-12-05T16:07:32	Date and time of file creation	ontime	3555.3988446072
revision	3	Processing version of data	ontime0	1442.2614064589
			ontime1	1439.0202766657
			ontime2	1377.0136541054
			ontime3	1383.6599439755
			ontime6	1549.2156368792
			ontime7	3555.3988446072
			l1events	1055760
				Sum of GTIs [s]
				Sum of GTIs [s]
				Sum of GTIs [s]
				Sum of GTIs [s]
				Sum of GTIs [s]
				Sum of GTIs [s]
				Sum of GTIs [s]
				Number of level 1 events

2.1.4 Events

	ccd 0	ccd 1	ccd 2	ccd 3	ccd 6	ccd 7		ccd 0	ccd 1	ccd 2	ccd 3	ccd 6	ccd 7
level 1 events	138210	139320	134559	135580	155545	352546	grade 0 events	43660	43285	36126	38114	37018	58862
rejected events	17402	18303	18418	19203	22286	33775		31%	31%	26%	28%	23%	16%
rejected %	12%	13%	13%	14%	14%	9%	grade 1 events	205	191	123	150	142	135
								0%	0%	0%	0%	0%	0%
							grade 2 events	46669	46942	51481	49945	62184	89382
								33%	33%	38%	36%	39%	25%
							grade 3 events	4700	4659	3677	3978	3852	27535
								3%	3%	2%	2%	2%	7%
							grade 4 events	4594	4761	3738	3972	3810	24931
								3%	3%	2%	2%	2%	7%
							grade 5 events	1183	1134	1081	1136	1294	4939
								0%	0%	0%	0%	0%	1%
							grade 6 events	21185	21370	21119	20368	26395	118061
								15%	15%	15%	15%	16%	33%
							grade 7 events	16014	16978	17214	17917	20850	28701
								11%	12%	12%	13%	13%	8%

2.2 Compared Parameters

Parameter	Planned	Actual	Parameter	Planned	Actual
Instrument	ACIS	ACIS	Obspar format version number	6	6
Detector	ACIS-012367	ACIS-012367	Obspar file type	PREDICTED	ACTUAL
Grating	NONE	NONE	Obspar update status	NONE	UPDATED
Data mode	FAINT	FAINT	On-chip summing requested	N	N
Observation mode	SECONDARY	SECONDARY	Subarray requested	NONE	NONE
Pointing RA	0	131.3746466571332	Alternating exposures requested	N	N
Pointing Dec	0	34.3457598788589	Primary exposure time	3.2	3.2
Pointing Roll	0.0	151.3655489736495			
SIM focus pos (mm)	-0.782348	-0.6828225247311905			
SIM defocus (mm)	0	0.8505141146731063			
SIM translation stage pos (mm)	-233.592463	250.466033080201			
SIM translation stage offset (mm)	0	-0.01005468664627074			
Observation start time	64922779.746107	64922778.977582			
Observation start date	2000-01-22T10:06:20	2000-01-22T10:06:18			
Observation end time	64930079.796373	64930079.027848			
Observation end date	2000-01-22T12:08:00	2000-01-22T12:07:59			
Read mode	TIMED	TIMED			

2.3 Star Slots

2.4 FID Slots

A Summary

A.1 Status

V&V Scientist	Beth Sundheim
V&V Date (YYYY-MM-DD)	2010.08.13
V&V Edition	1
V&V Disposition and Status	OK
V&V Charge Time	3.5553988446072

A.2 Comments

The focal plane temperature is approximately -110C during this observation.

The ACIS CTI correction has not been calibrated at this temperature because it was early in the mission, and ACIS had not yet been lowered to the standard -119.7 C. Both front- and back-illuminated chips are affected. However, a T_GAIN correction has been applied to the BI chip (ACIS-7) data included here.