

V&V Reference Report

L2 ASCDS Version : 8.4.5

Observation 62110 - L2 Version 4
Chandra X-Ray Center

L2 Processing Date : Aug 24 2012

Contents

1	Front	2
2	OBI	3
2.1	OBI	3
2.1.1	Images	3
2.1.2	Bias	3
2.1.3	Parameters	4
2.1.4	Events	4
2.2	Compared Parameters	5
2.3	Star Slots	6
2.4	FID Slots	6
A	Summary	7
A.1	Status	7
A.2	Comments	7

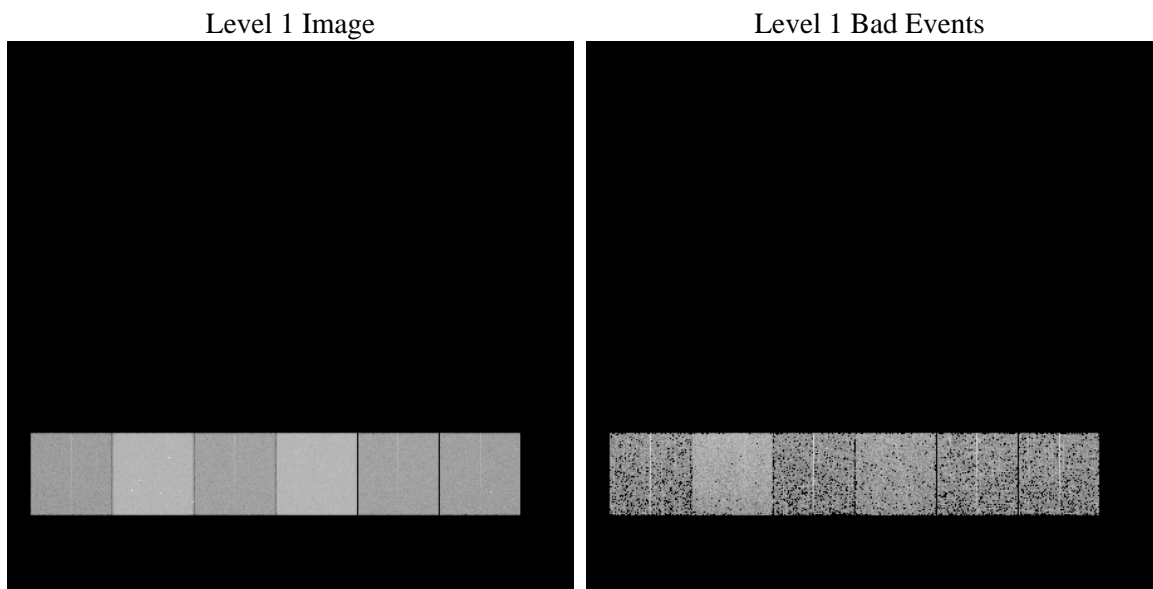
1 Front

seq_num	 	Sequence number
obs_id	62110	Observation id
title	ACIS-456789 diagnostics	Proposal title
observer	CHANDRA engineering request/realtime commanding	Principal investig
object	 	Source name
dtcycle	0	
cycle	P	events from which exps? Prim/Second/Both
ra_targ	0.0	Observer's specified target RA [deg]
dec_targ	0.0	Observer's specified target Dec [deg]
ra_nom	268.74371802822	Nominal RA [deg]
dec_nom	73.695454534765	Nominal Dec [deg]
roll_nom	93.544662072652	Nominal Roll [deg]
revision	4	Processing version of data
ontime	2963.8920337707	Sum of GTIs [s]
livetime	2926.3614481976	Livetime [s]
ontime4	1189.6741433591	Sum of GTIs [s]
ontime5	3186.1420153081	Sum of GTIs [s]
ontime6	1340.2202568948	Sum of GTIs [s]
ontime7	2963.8920337707	Sum of GTIs [s]
ontime8	1353.266636461	Sum of GTIs [s]
ontime9	1273.9411532134	Sum of GTIs [s]
l2events	927868	Number of level 2 events

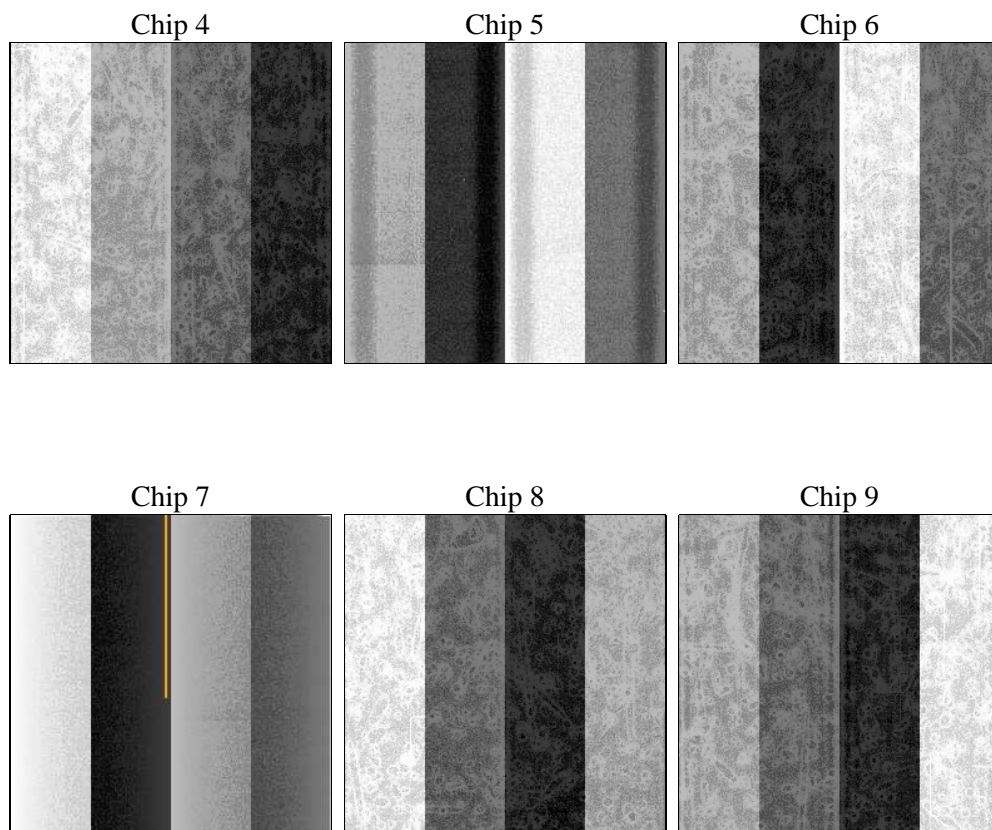
2 OBI

2.1 OBI

2.1.1 Images



2.1.2 Bias



2.1.3 Parameters

obi_num	0	Obi number	sched_exp_time	0.0	[s] Scheduled observation exposure time
ascdsver	8.4.5	Processing system revision	ontime	2963.8920337707	Sum of GTIs [s]
caldsver	4.5.1.1	 	ontime4	1189.6741433591	Sum of GTIs [s]
date	2012-08-24T16:56:44	Date and time of file creation	ontime5	3186.1420153081	Sum of GTIs [s]
revision	4	Processing version of data	ontime6	1340.2202568948	Sum of GTIs [s]
			ontime7	2963.8920337707	Sum of GTIs [s]
			ontime8	1353.266636461	Sum of GTIs [s]
			ontime9	1273.9411532134	Sum of GTIs [s]
			l1events	1063994	Number of level 1 events

2.1.4 Events

	ccd 4	ccd 5	ccd 6	ccd 7	ccd 8	ccd 9		ccd 4	ccd 5	ccd 6	ccd 7	ccd 8	ccd 9
level 1 events	113250	273863	134418	282980	135540	123943	grade 0 events	56402	64195	66754	69186	67290	61146
rejected events	13027	25698	12361	16963	13729	12848		49%	23%	49%	24%	49%	49%
rejected %	11%	9%	9%	5%	10%	10%	grade 1 events	338	353	346	185	366	352
								0%	0%	0%	0%	0%	0%
							grade 2 events	17848	85557	21163	59374	21287	19816
								15%	31%	15%	20%	15%	15%
							grade 3 events	6178	16754	7623	27324	7746	6714
								5%	6%	5%	9%	5%	5%
							grade 4 events	6091	16531	7475	27293	7709	7014
								5%	6%	5%	9%	5%	5%
							grade 5 events	834	5367	1037	3768	1050	1052
								0%	1%	0%	1%	0%	0%
							grade 6 events	13704	65128	19042	83139	17779	16711
								12%	23%	14%	29%	13%	13%
							grade 7 events	11855	19978	10978	12711	12313	11138
								10%	7%	8%	4%	9%	8%

2.2 Compared Parameters

Parameter	Planned	Actual	Parameter	Planned	Actual
Instrument	ACIS	ACIS	Obspar format version number	7	7
Detector	ACIS-456789	ACIS-456789	Obspar file type	PREDICTED	ACTUAL
Grating	NONE	NONE	Obspar update status	NONE	UPDATED
Data mode	FAINT	FAINT	On-chip summing requested	N	N
Observation mode	SECONDARY	SECONDARY	Subarray requested	NONE	NONE
[deg] Pointing RA	0	268.7437180282169	Alternating exposures requested	N	N
[deg] Pointing Dec	0	73.69545453476478	[s] Primary exposure time	3.2	3.2
[deg] Pointing Roll	0.0	93.54466207265199			
[mm] SIM focus pos	-0.684267	-0.6828225247311905			
[mm] SIM defocus	0	0.8505141146731063			
[mm] SIM translation stage pos	-190.132523	250.466033080201			
[mm] SIM translation stage offset	0	-0.01005468664627074			
[s] Observation start time (MET)	70128814.439816	70128813.671351			
Observation start date	2000-03-22T16:13:34	2000-03-22T16:13:33			
[s] Observation end time (MET)	70170775.89135	70170775.122885			
Observation end date	2000-03-23T03:52:56	2000-03-23T03:52:55			
Read mode	TIMED	TIMED			

2.3 Star Slots

2.4 FID Slots

A Summary

A.1 Status

V&V Scientist	Jen Lauer
V&V Date (YYYY-MM-DD)	2012.08.27
V&V Edition	1
V&V Disposition and Status	OK
V&V Charge Time	2.9638920337707

A.2 Comments