

V&V Reference Report

L2 ASCDS Version : 8.4.5

Observation 62020 - L2 Version 5
Chandra X-Ray Center

L2 Processing Date : Aug 29 2012

Contents

1	Front	2
2	OBI	3
2.1	OBI	3
2.1.1	Images	3
2.1.2	Bias	3
2.1.3	Parameters	4
2.1.4	Events	4
2.2	Compared Parameters	5
2.3	Star Slots	6
2.4	FID Slots	6
A	Summary	7
A.1	Status	7
A.2	Comments	7

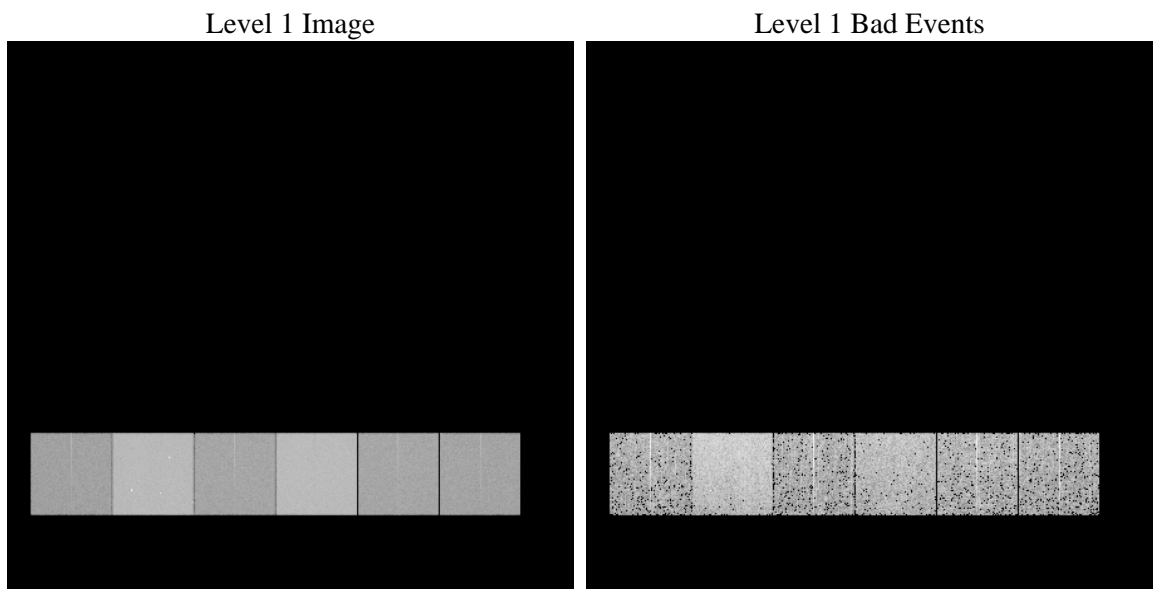
1 Front

seq_num	 	Sequence number
obs_id	62020	Observation id
title	ACIS-456789 diagnostics	Proposal title
observer	CHANDRA engineering request/realtime commanding	Principal investig
object	 	Source name
dtcycle	0	
cycle	P	events from which exps? Prim/Second/Both
ra_targ	0.0	Observer's specified target RA [deg]
dec_targ	0.0	Observer's specified target Dec [deg]
ra_nom	322.33031290147	Nominal RA [deg]
dec_nom	62.267387589198	Nominal Dec [deg]
roll_nom	132.78281632931	Nominal Roll [deg]
revision	5	Processing version of data
ontime	4255.0323137194	Sum of GTIs [s]
livetime	4201.1525324902	Livetime [s]
ontime4	1750.1600299478	Sum of GTIs [s]
ontime5	4566.6025653929	Sum of GTIs [s]
ontime6	1938.1402098686	Sum of GTIs [s]
ontime7	4255.0323137194	Sum of GTIs [s]
ontime8	1957.5864697099	Sum of GTIs [s]
ontime9	1883.0426695943	Sum of GTIs [s]
l2events	1260967	Number of level 2 events

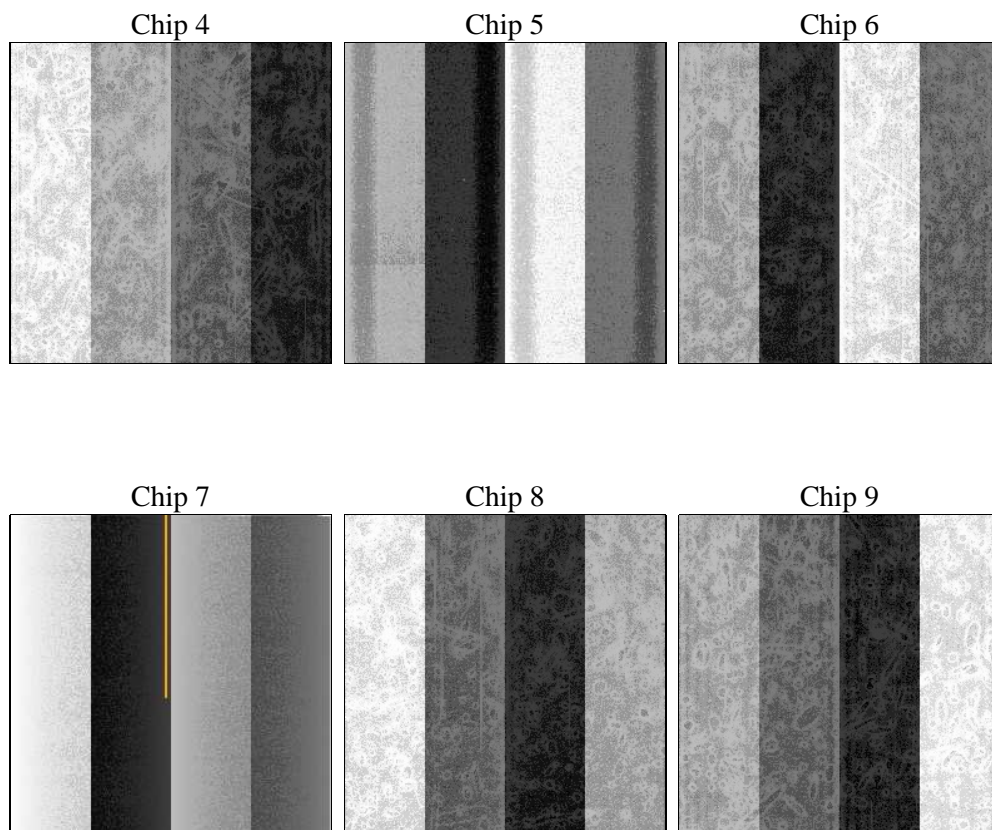
2 OBI

2.1 OBI

2.1.1 Images



2.1.2 Bias



2.1.3 Parameters

obi_num	0	Obi number	sched_exp_time	0.0	[s] Scheduled observation exposure time
ascdsver	8.4.5	Processing system revision	ontime	4255.0323137194	Sum of GTIs [s]
caldbver	4.5.1.1	 	ontime4	1750.1600299478	Sum of GTIs [s]
date	2012-08-29T10:00:15	Date and time of file creation	ontime5	4566.6025653929	Sum of GTIs [s]
revision	5	Processing version of data	ontime6	1938.1402098686	Sum of GTIs [s]
			ontime7	4255.0323137194	Sum of GTIs [s]
			ontime8	1957.5864697099	Sum of GTIs [s]
			ontime9	1883.0426695943	Sum of GTIs [s]
			l1events	1435647	Number of level 1 events

2.1.4 Events

	ccd 4	ccd 5	ccd 6	ccd 7	ccd 8	ccd 9		ccd 4	ccd 5	ccd 6	ccd 7	ccd 8	ccd 9
level 1 events	154236	367276	182038	378446	184153	169498	grade 0 events	78437	90795	90677	92661	91908	84885
rejected events	16083	31882	16479	21638	18133	15302		50%	24%	49%	24%	49%	50%
rejected %	10%	8%	9%	5%	9%	9%	grade 1 events	440	283	454	262	457	455
								0%	0%	0%	0%	0%	0%
							grade 2 events	24000	112553	28681	80017	29300	27132
								15%	30%	15%	21%	15%	16%
							grade 3 events	8637	23581	10224	36611	10374	9600
								5%	6%	5%	9%	5%	5%
							grade 4 events	8575	23635	10205	36333	10422	9559
								5%	6%	5%	9%	5%	5%
							grade 5 events	1115	6848	1287	4933	1426	1252
								0%	1%	0%	1%	0%	0%
							grade 6 events	18504	84830	25772	111186	24016	23020
								11%	23%	14%	29%	13%	13%
							grade 7 events	14528	24751	14738	16443	16250	13595
								9%	6%	8%	4%	8%	8%

2.2 Compared Parameters

Parameter	Planned	Actual	Parameter	Planned	Actual
Instrument	ACIS	ACIS	Obspar format version number	7	7
Detector	ACIS-456789	ACIS-456789	Obspar file type	PREDICTED	ACTUAL
Grating	NONE	NONE	Obspar update status	NONE	UPDATED
Data mode	FAINT	FAINT	On-chip summing requested	N	N
Observation mode	SECONDARY	SECONDARY	Subarray requested	NONE	NONE
[deg] Pointing RA	0	322.3303129014711	Alternating exposures requested	N	N
[deg] Pointing Dec	0	62.26738758919848	[s] Primary exposure time	0.000000	3.2
[deg] Pointing Roll	0.0	132.7828163293065			
[mm] SIM focus pos	-0.684267	-0.6828225247311905			
[mm] SIM defocus	0	0.8505141146731063			
[mm] SIM translation stage pos	-190.132523	250.466033080201			
[mm] SIM translation stage offset	0	-0.01005468664627074			
[s] Observation start time (MET)	77892857.625	77892856.85642301			
Observation start date	2000-06-20T12:54:18	2000-06-20T12:54:16			
[s] Observation end time (MET)	77936008.07600001	77936007.30801401			
Observation end date	2000-06-21T00:53:28	2000-06-21T00:53:27			
Read mode	TIMED	TIMED			

2.3 Star Slots

2.4 FID Slots

A Summary

A.1 Status

V&V Scientist	Jen Lauer
V&V Date (YYYY-MM-DD)	2012.08.31
V&V Edition	1
V&V Disposition and Status	OK
V&V Charge Time	4.2550323137194

A.2 Comments