

V&V Reference Report

L2 ASCDS Version : 8.4.5

Observation 62010 - L2 Version 5
Chandra X-Ray Center

L2 Processing Date : Aug 29 2012

Contents

1	Front	2
2	OBI	3
2.1	OBI	3
2.1.1	Images	3
2.1.2	Bias	3
2.1.3	Parameters	4
2.1.4	Events	4
2.2	Compared Parameters	5
2.3	Star Slots	6
2.4	FID Slots	6
A	Summary	7
A.1	Status	7
A.2	Comments	7

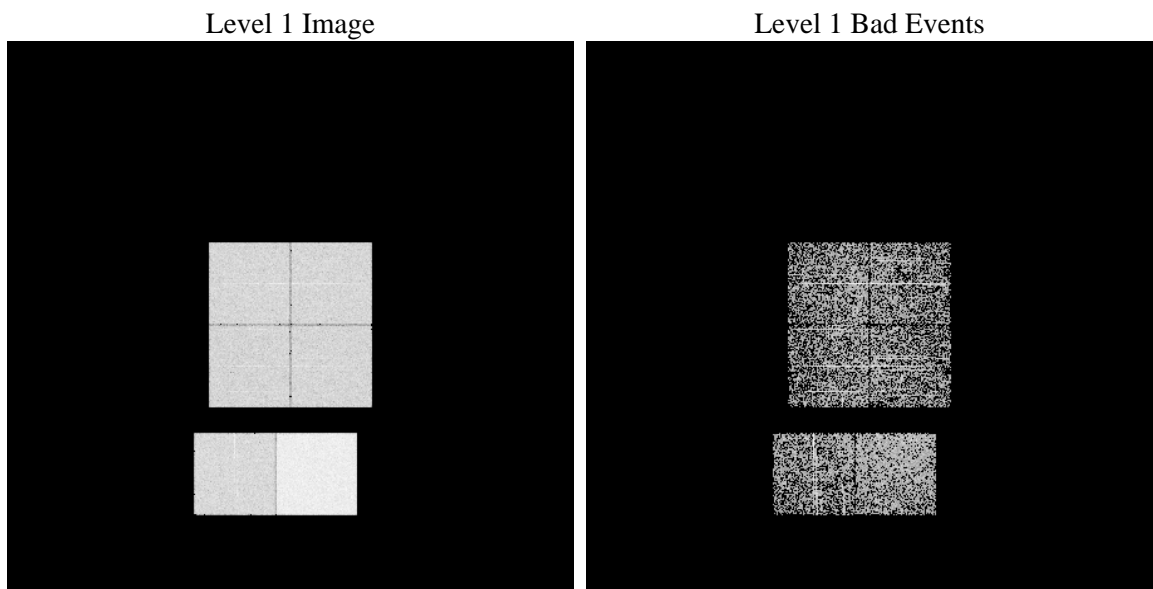
1 Front

seq_num	 	Sequence number
obs_id	62010	Observation id
title	ACIS-012367 diagnostics	Proposal title
observer	CHANDRA engineering request/realtime commanding	Principal investig
object	 	Source name
dtcycle	0	
cycle	P	events from which exps? Prim/Second/Both
ra_targ	0.0	Observer's specified target RA [deg]
dec_targ	0.0	Observer's specified target Dec [deg]
ra_nom	142.37117835585	Nominal RA [deg]
dec_nom	-62.28743453593	Nominal Dec [deg]
roll_nom	219.93783861053	Nominal Roll [deg]
revision	5	Processing version of data
ontime	1400.4117787629	Sum of GTIs [s]
livetime	1382.6789215935	Livetime [s]
ontime0	629.01317210495	Sum of GTIs [s]
ontime1	632.0011331141	Sum of GTIs [s]
ontime2	583.55667182803	Sum of GTIs [s]
ontime3	602.83192276955	Sum of GTIs [s]
ontime6	667.78259184957	Sum of GTIs [s]
ontime7	1400.4117787629	Sum of GTIs [s]
l2events	354849	Number of level 2 events

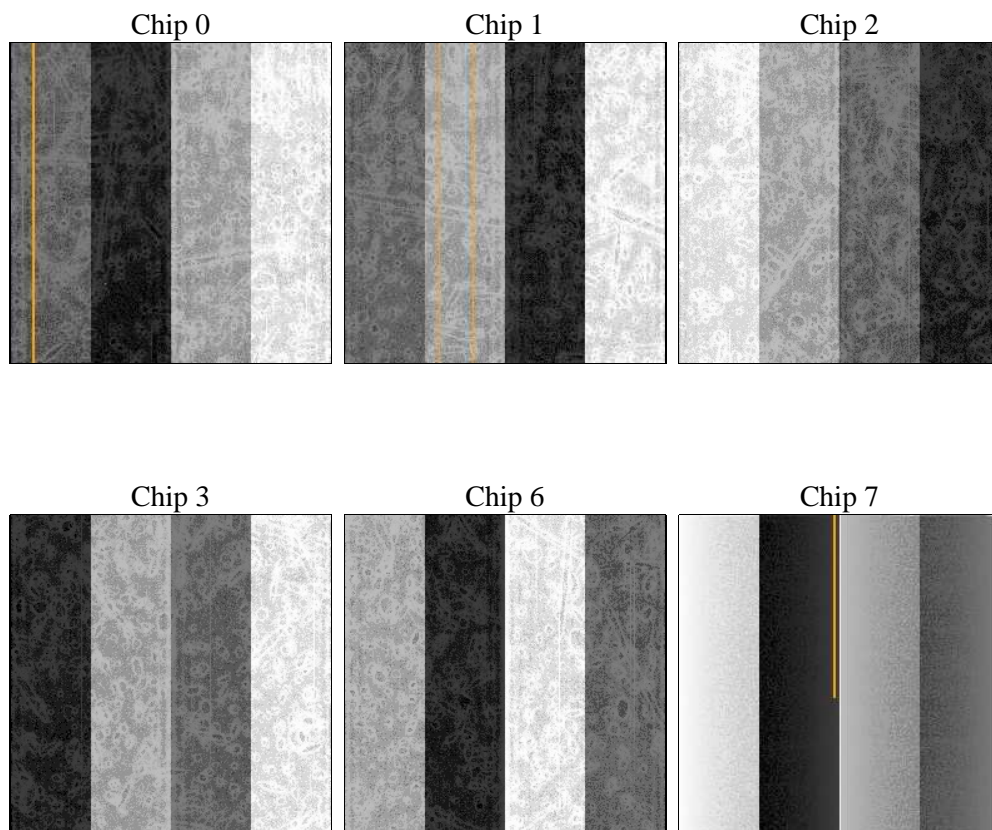
2 OBI

2.1 OBI

2.1.1 Images



2.1.2 Bias



2.1.3 Parameters

obi_num	0	Obi number	sched_exp_time	0.0	[s] Scheduled observation exposure time
ascdsver	8.4.5	Processing system revision	ontime	1400.4117787629	Sum of GTIs [s]
caldbver	4.5.1.1	 	ontime0	629.01317210495	Sum of GTIs [s]
date	2012-08-30T02:29:55	Date and time of file creation	ontime1	632.0011331141	Sum of GTIs [s]
revision	5	Processing version of data	ontime2	583.55667182803	Sum of GTIs [s]
			ontime3	602.83192276955	Sum of GTIs [s]
			ontime6	667.78259184957	Sum of GTIs [s]
			ontime7	1400.4117787629	Sum of GTIs [s]
			l1events	405000	Number of level 1 events

2.1.4 Events

	ccd 0	ccd 1	ccd 2	ccd 3	ccd 6	ccd 7		ccd 0	ccd 1	ccd 2	ccd 3	ccd 6	ccd 7
level 1 events	56202	56175	53229	54432	61775	123187	grade 0 events	28037	28066	26402	27532	30691	29657
rejected events	5502	5368	5532	5391	5848	7360		49%	49%	49%	50%	49%	24%
rejected %	9%	9%	10%	9%	9%	5%	grade 1 events	152	161	132	154	179	66
								0%	0%	0%	0%	0%	0%
							grade 2 events	9028	8818	8472	8475	9560	25601
								16%	15%	15%	15%	15%	20%
							grade 3 events	3203	3260	3047	3119	3376	11836
								5%	5%	5%	5%	5%	9%
							grade 4 events	3303	3260	3050	3116	3470	11774
								5%	5%	5%	5%	5%	9%
							grade 5 events	389	405	352	379	470	1631
								0%	0%	0%	0%	0%	1%
							grade 6 events	7395	7403	6998	6799	9059	37239
								13%	13%	13%	12%	14%	30%
							grade 7 events	4695	4802	4776	4858	4970	5383
								8%	8%	8%	8%	8%	4%

2.2 Compared Parameters

Parameter	Planned	Actual	Parameter	Planned	Actual
Instrument	ACIS	ACIS	Obspar format version number	7	7
Detector	ACIS-012367	ACIS-012367	Obspar file type	PREDICTED	ACTUAL
Grating	NONE	NONE	Obspar update status	NONE	UPDATED
Data mode	FAINT	FAINT	On-chip summing requested	N	N
Observation mode	SECONDARY	SECONDARY	Subarray requested	NONE	NONE
[deg] Pointing RA	0	142.3711783558463	Alternating exposures requested	N	N
[deg] Pointing Dec	0	-62.28743453592956	[s] Primary exposure time	0.000000	3.2
[deg] Pointing Roll	0.0	219.9378386105294			
[mm] SIM focus pos	-0.782348	-0.6828225247311905			
[mm] SIM defocus	0	0.8505141146731063			
[mm] SIM translation stage pos	-233.592463	250.466033080201			
[mm] SIM translation stage offset	0	-0.01005468664627074			
[s] Observation start time (MET)	78621595.752	78621594.98329			
Observation start date	2000-06-28T23:19:56	2000-06-28T23:19:54			
[s] Observation end time (MET)	78632104.052	78632103.283678			
Observation end date	2000-06-29T02:15:04	2000-06-29T02:15:03			
Read mode	TIMED	TIMED			

2.3 Star Slots

2.4 FID Slots

A Summary

A.1 Status

V&V Scientist	Jen Lauer
V&V Date (YYYY-MM-DD)	2012.09.04
V&V Edition	1
V&V Disposition and Status	OK
V&V Charge Time	1.4004117787629

A.2 Comments