

V&V Reference Report

L2 ASCDS Version : 8.4.5

Observation 61900 - L2 Version 4
Chandra X-Ray Center

L2 Processing Date : Sep 5 2012

Contents

1	Front	2
2	OBI	3
2.1	OBI	3
2.1.1	Images	3
2.1.2	Bias	3
2.1.3	Parameters	4
2.1.4	Events	4
2.2	Compared Parameters	5
2.3	Star Slots	6
2.4	FID Slots	6
A	Summary	7
A.1	Status	7
A.2	Comments	7

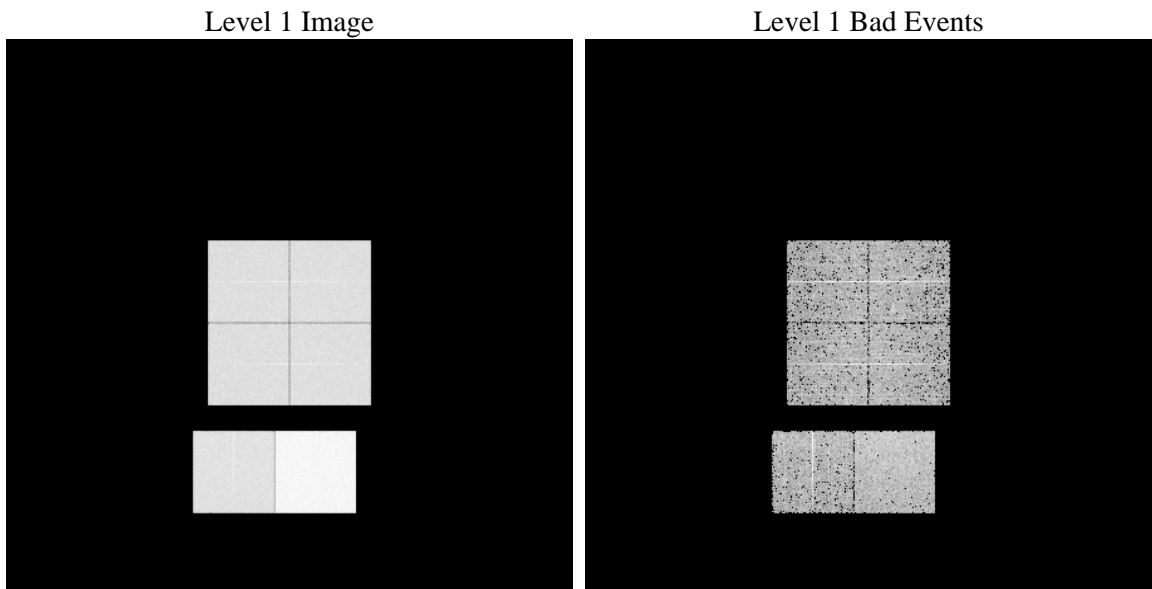
1 Front

seq_num	 	Sequence number
obs_id	61900	Observation id
title	ACIS-012367 diagnostics	Proposal title
observer	CHANDRA engineering request/realtime commanding	Principal investig
object	 	Source name
dtcycle	0	
cycle	P	events from which exps? Prim/Second/Both
ra_targ	0.0	Observer's specified target RA [deg]
dec_targ	0.0	Observer's specified target Dec [deg]
ra_nom	20.328787333275	Nominal RA [deg]
dec_nom	23.222055247306	Nominal Dec [deg]
roll_nom	143.48459324536	Nominal Roll [deg]
revision	4	Processing version of data
ontime	5344.1280270517	Sum of GTIs [s]
livetime	5276.4574601256	Livetime [s]
ontime0	2326.7990429401	Sum of GTIs [s]
ontime1	2320.2761897743	Sum of GTIs [s]
ontime2	2249.0962230116	Sum of GTIs [s]
ontime3	2287.8245228529	Sum of GTIs [s]
ontime6	2466.2866133749	Sum of GTIs [s]
ontime7	5344.1280270517	Sum of GTIs [s]
l2events	1261016	Number of level 2 events

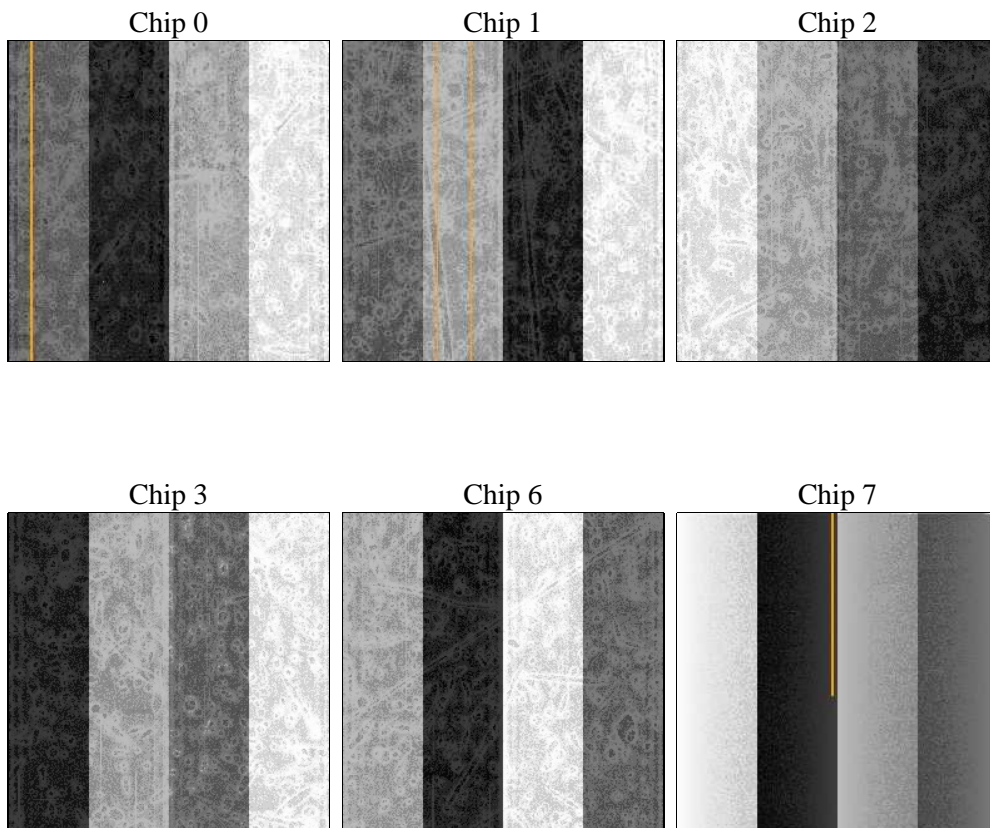
2 OBI

2.1 OBI

2.1.1 Images



2.1.2 Bias



2.1.3 Parameters

obi_num	0	Obi number	sched_exp_time	0.0	[s] Scheduled observation exposure time
ascdsver	8.4.5	Processing system revision	ontime	5344.1280270517	Sum of GTIs [s]
caldsver	4.5.1.1	 	ontime0	2326.7990429401	Sum of GTIs [s]
date	2012-09-05T18:16:39	Date and time of file creation	ontime1	2320.2761897743	Sum of GTIs [s]
revision	4	Processing version of data	ontime2	2249.0962230116	Sum of GTIs [s]
			ontime3	2287.8245228529	Sum of GTIs [s]
			ontime6	2466.2866133749	Sum of GTIs [s]
			ontime7	5344.1280270517	Sum of GTIs [s]
			l1events	1429675	Number of level 1 events

2.1.4 Events

	ccd 0	ccd 1	ccd 2	ccd 3	ccd 6	ccd 7		ccd 0	ccd 1	ccd 2	ccd 3	ccd 6	ccd 7
level 1 events	192585	193510	190763	193762	215498	443557	grade 0 events	97242	97351	96219	98069	107503	108369
rejected events	16824	17690	18241	18112	19271	25883		50%	50%	50%	50%	49%	24%
rejected %	8%	9%	9%	9%	8%	5%	grade 1 events	469	472	444	559	519	311
								0%	0%	0%	0%	0%	0%
							grade 2 events	30729	30838	30277	30802	33675	92784
								15%	15%	15%	15%	15%	20%
							grade 3 events	11268	11034	10887	11268	12168	43232
								5%	5%	5%	5%	5%	9%
							grade 4 events	11073	11195	10656	11090	12215	42292
								5%	5%	5%	5%	5%	9%
							grade 5 events	1391	1315	1215	1364	1582	5858
								0%	0%	0%	0%	0%	1%
							grade 6 events	25449	25402	24483	24421	30666	130997
								13%	13%	12%	12%	14%	29%
							grade 7 events	14964	15903	16582	16189	17170	19714
								7%	8%	8%	8%	7%	4%

2.2 Compared Parameters

Parameter	Planned	Actual
Instrument	ACIS	ACIS
Detector	ACIS-012367	ACIS-012367
Grating	NONE	NONE
Data mode	FAINT	FAINT
Observation mode	SECONDARY	SECONDARY
[deg] Pointing RA	0	20.32878733327545
[deg] Pointing Dec	0	23.22205524730601
[deg] Pointing Roll	0.0	143.4845932453635
[mm] SIM focus pos	-0.782348	-1.428180813131781
[mm] SIM defocus	0	0.1051558262725154
[mm] SIM translation stage pos	-233.592463	250.466033080201
[mm] SIM translation stage offset	0	-0.01005468664627074
[s] Observation start time (MET)	86575936.34900001	86575935.580172
Observation start date	2000-09-29T00:52:16	2000-09-29T00:52:15
[s] Observation end time (MET)	86617848.59999999	86617847.831754
Observation end date	2000-09-29T12:30:49	2000-09-29T12:30:47
Read mode	TIMED	TIMED

Parameter	Planned	Actual
Obspar format version number	7	7
Obspar file type	PREDICTED	ACTUAL
Obspar update status	NONE	UPDATED
On-chip summing requested	N	N
Subarray requested	NONE	NONE
Alternating exposures requested	N	N
[s] Primary exposure time	0.000000	3.2

2.3 Star Slots

2.4 FID Slots

A Summary

A.1 Status

V&V Scientist	Jen Lauer
V&V Date (YYYY-MM-DD)	2012.09.14
V&V Edition	1
V&V Disposition and Status	OK
V&V Charge Time	5.3441280270517

A.2 Comments