

# V&V Reference Report

## L2 ASCDS Version : 7.6.10

Observation 61820 - L2 Version 001  
Chandra X-Ray Center

L2 Processing Date : Jun 20 2007

## Contents

<b>1</b>	<b>Front</b>	<b>2</b>
<b>2</b>	<b>OBI</b>	<b>3</b>
2.1	OBI . . . . .	3
2.1.1	Images . . . . .	3
2.1.2	Bias . . . . .	3
2.1.3	Parameters . . . . .	4
2.1.4	Events . . . . .	4
2.2	Compared Parameters . . . . .	5
2.3	Star Slots . . . . .	6
2.4	FID Slots . . . . .	6
<b>A</b>	<b>Summary</b>	<b>7</b>
A.1	Status . . . . .	7
A.2	Comments . . . . .	7

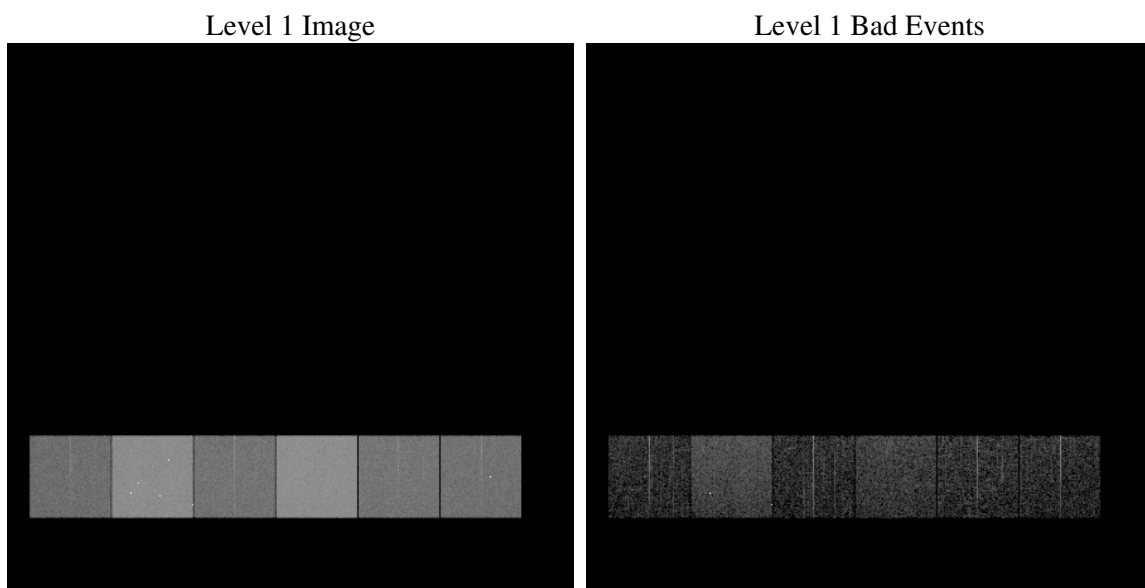
# 1 Front

seq_num	&#160
obs_id	61820
title	ACIS-456789 diagnostics
observer	CHANDRA engineering request/realtime commanding
object	&#160
dtcycle	0
cycle	P
ra_targ	0.0
dec_targ	0.0
ra_nom	24.423993531394
dec_nom	5.0544277628118
roll_nom	294.2896128256
revision	3
ontime	4725.0224263817
livetime	4665.1913473519
ontime4	1970.2853344232
ontime5	5062.1249476671
ontime6	2161.4655243158
ontime7	4725.0224263817
ontime8	2200.3952165842
ontime9	2112.7268542796
l2events	1244742

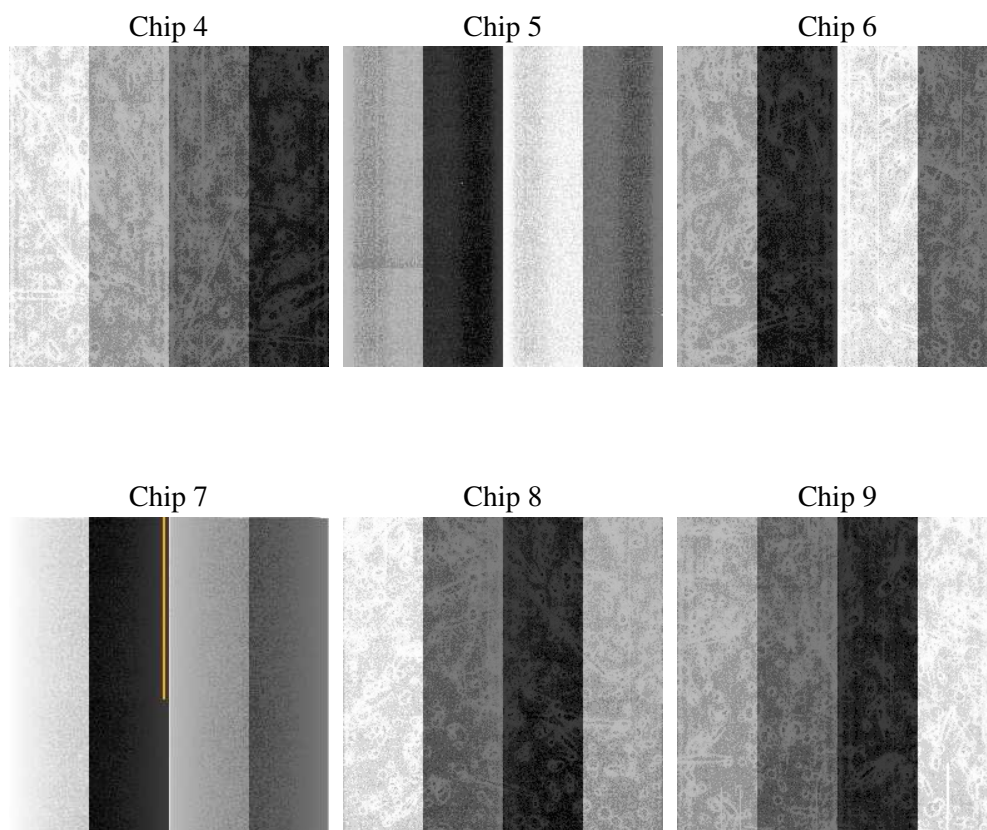
## 2 OBI

### 2.1 OBI

#### 2.1.1 Images



#### 2.1.2 Bias



### 2.1.3 Parameters

obi_num	0
ascdsver	7.6.10
caldsver	3.4.0
date	2007-06-20T17:20:03
revision	3

sched_exp_time	0.0
ontime	4725.0224263817
ontime4	1970.2853344232
ontime5	5062.1249476671
ontime6	2161.4655243158
ontime7	4725.0224263817
ontime8	2200.3952165842
ontime9	2112.7268542796
l1events	1433322

### 2.1.4 Events

	ccd 4	ccd 5	ccd 6	ccd 7	ccd 8	ccd 9
level 1 events	155172	365646	181351	375232	184282	171639
rejected events	16840	37250	16828	23988	18419	15853
rejected %	10%	10%	9%	6%	9%	9%

	ccd 4	ccd 5	ccd 6	ccd 7	ccd 8	ccd 9
grade 0 events	78306	84441	90181	90584	91701	85071
	50%	23%	49%	24%	49%	49%
grade 1 events	444	425	411	226	451	430
	0%	0%	0%	0%	0%	0%
grade 2 events	24306	114479	28463	77650	29187	28362
	15%	31%	15%	20%	15%	16%
grade 3 events	8622	21706	10079	35993	10532	9601
	5%	5%	5%	9%	5%	5%
grade 4 events	8432	21459	10081	35421	10226	9561
	5%	5%	5%	9%	5%	5%
grade 5 events	1203	7880	1351	5147	1413	1294
	0%	2%	0%	1%	0%	0%
grade 6 events	18666	86311	25719	111596	24217	23191
	12%	23%	14%	29%	13%	13%
grade 7 events	15193	28945	15066	18615	16555	14129
	9%	7%	8%	4%	8%	8%

## 2.2 Compared Parameters

Parameter	Planned	Actual	Parameter	Planned	Actual
Instrument	ACIS	ACIS	Obspar format version number	6	6
Detector	ACIS-456789	ACIS-456789	Obspar file type	PREDICTED	ACTUAL
Grating	NONE	NONE	Obspar update status	NONE	UPDATED
Data mode	FAINT	FAINT	On-chip summing requested	N	N
Observation mode	SECONDARY	SECONDARY	Subarray requested	NONE	NONE
Pointing RA	0	24.42399353139383	Alternating exposures requested	N	N
Pointing Dec	0	5.05442776281177	Primary exposure time	0.000000	3.2
Pointing Roll	0.0	294.2896128255998			
SIM focus pos (mm)	-0.684267	-1.038866356238299			
SIM defocus (mm)	0	0.4944702831659975			
SIM translation stage pos (mm)	-190.132523	250.466033080201			
SIM translation stage offset (mm)	0	-0.01005468664627074			
Observation start time	93201130.7	93201129.931629			
Observation start date	2000-12-14T17:12:11	2000-12-14T17:12:09			
Observation end time	93211370.45	93211369.68201999			
Observation end date	2000-12-14T20:02:50	2000-12-14T20:02:49			
Read mode	TIMED	TIMED			

## **2.3 Star Slots**

## **2.4 FID Slots**

## A Summary

### A.1 Status

V&V Scientist	Jen Lauer
V&V Date (YYYY-MM-DD)	2007.06.21
V&V Edition	1
V&V Disposition and Status	OK
V&V Charge Time	4.72502242

### A.2 Comments