

V&V Reference Report

L2 ASCDS Version : 8.4.5

Observation 61680 - L2 Version 3
Chandra X-Ray Center

L2 Processing Date : Sep 14 2012

Contents

1	Front	2
2	OBI	3
2.1	OBI	3
2.1.1	Images	3
2.1.2	Bias	3
2.1.3	Parameters	4
2.1.4	Events	4
2.2	Compared Parameters	5
2.3	Star Slots	6
2.4	FID Slots	6
A	Summary	7
A.1	Status	7
A.2	Comments	7

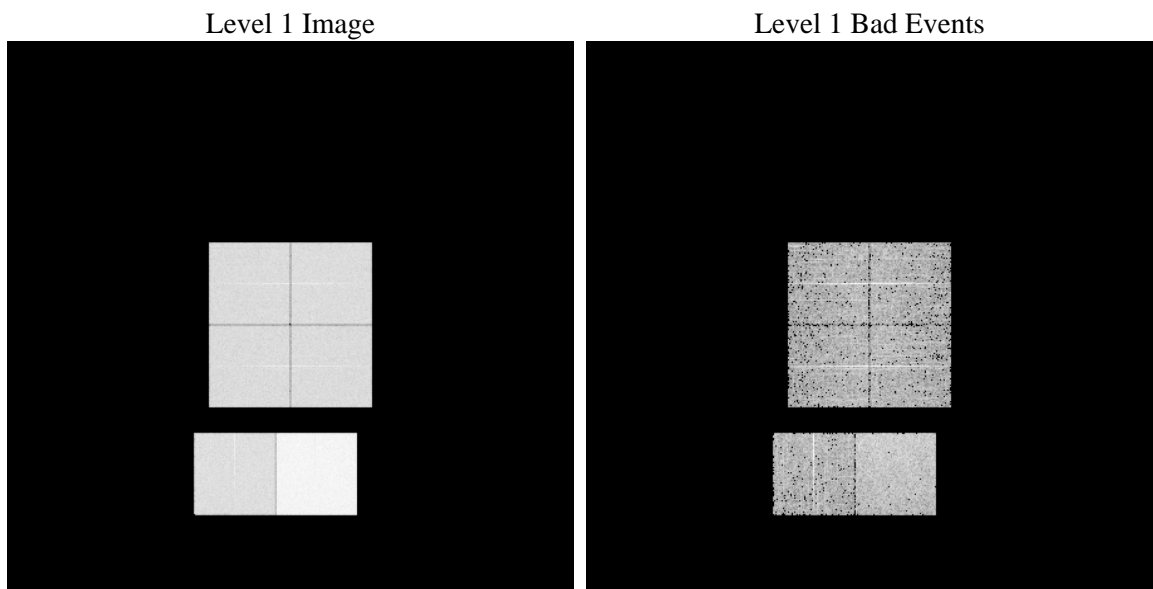
1 Front

seq_num	 	Sequence number
obs_id	61680	Observation id
title	ACIS-012367 diagnostics	Proposal title
observer	CHANDRA engineering request/realtime commanding	Principal investig
object	 	Source name
dtcycle	0	
cycle	P	events from which exps? Prim/Second/Both
ra_targ	0.0	Observer's specified target RA [deg]
dec_targ	0.0	Observer's specified target Dec [deg]
ra_nom	90.012943803895	Nominal RA [deg]
dec_nom	-32.026521219246	Nominal Dec [deg]
roll_nom	259.77515162714	Nominal Roll [deg]
revision	3	Processing version of data
ontime	5990.2661956698	Sum of GTIs [s]
livetime	5914.4138381949	Livetime [s]
ontime0	2467.3079064339	Sum of GTIs [s]
ontime1	2533.9159348756	Sum of GTIs [s]
ontime2	2410.7976644486	Sum of GTIs [s]
ontime3	2418.6923763454	Sum of GTIs [s]
ontime6	2622.8772879243	Sum of GTIs [s]
ontime7	5990.2661956698	Sum of GTIs [s]
l2events	1231036	Number of level 2 events

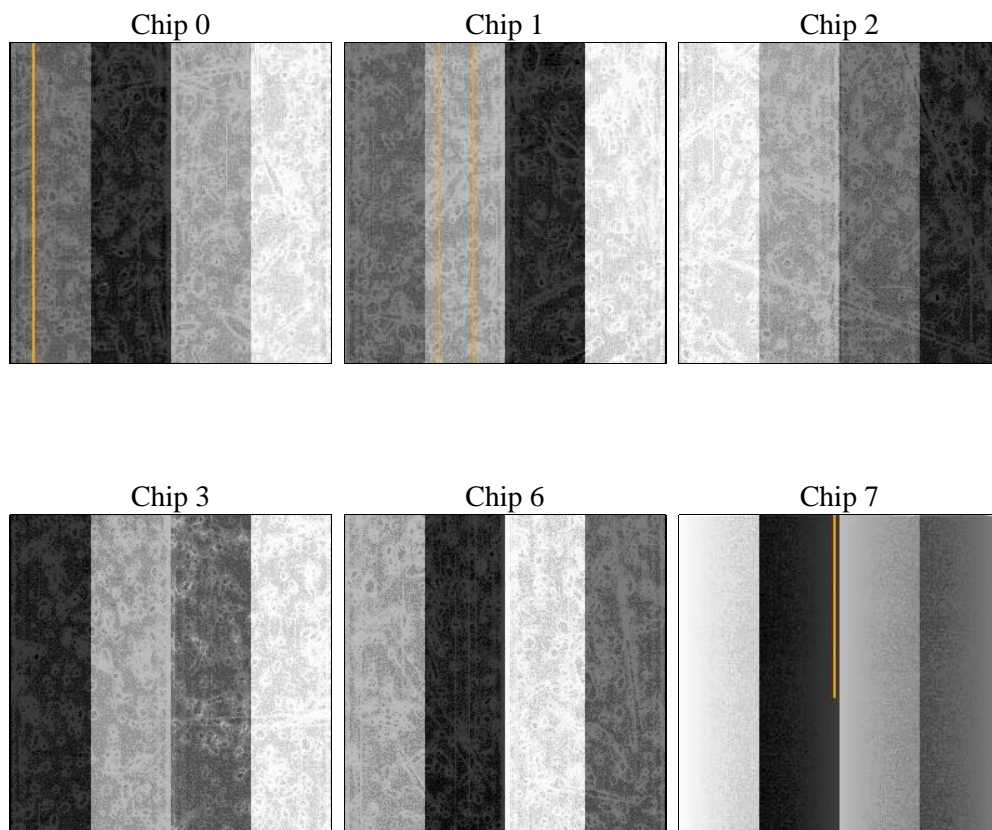
2 OBI

2.1 OBI

2.1.1 Images



2.1.2 Bias



2.1.3 Parameters

obi_num	0	Obi number	sched_exp_time	0.0	[s] Scheduled observation exposure time
ascdsver	8.4.5	Processing system revision	ontime	5990.2661956698	Sum of GTIs [s]
caldsver	4.5.1.1	 	ontime0	2467.3079064339	Sum of GTIs [s]
date	2012-09-14T22:58:59	Date and time of file creation	ontime1	2533.9159348756	Sum of GTIs [s]
revision	3	Processing version of data	ontime2	2410.7976644486	Sum of GTIs [s]
			ontime3	2418.6923763454	Sum of GTIs [s]
			ontime6	2622.8772879243	Sum of GTIs [s]
			ontime7	5990.2661956698	Sum of GTIs [s]
			l1events	1412285	Number of level 1 events

2.1.4 Events

	ccd 0	ccd 1	ccd 2	ccd 3	ccd 6	ccd 7		ccd 0	ccd 1	ccd 2	ccd 3	ccd 6	ccd 7
level 1 events	186458	192775	184485	186511	208522	453534	grade 0 events	92314	95711	91855	93099	102050	109499
rejected events	19323	19242	18948	19858	20629	31194		49%	49%	49%	49%	48%	24%
rejected %	10%	9%	10%	10%	9%	6%	grade 1 events	512	483	507	513	527	288
								0%	0%	0%	0%	0%	0%
							grade 2 events	29588	30156	28979	29143	32749	93428
								15%	15%	15%	15%	15%	20%
							grade 3 events	10619	11034	10406	10813	11601	43001
								5%	5%	5%	5%	5%	9%
							grade 4 events	10428	11205	10289	10380	11634	42318
								5%	5%	5%	5%	5%	9%
							grade 5 events	1449	1428	1406	1450	1640	6582
								0%	0%	0%	0%	0%	1%
							grade 6 events	24395	25427	24008	23459	30101	134330
								13%	13%	13%	12%	14%	29%
							grade 7 events	17153	17331	17035	17654	18220	24088
								9%	8%	9%	9%	8%	5%

2.2 Compared Parameters

Parameter	Planned	Actual	Parameter	Planned	Actual
Instrument	ACIS	ACIS	Obspar format version number	7	7
Detector	ACIS-012367	ACIS-012367	Obspar file type	PREDICTED	ACTUAL
Grating	NONE	NONE	Obspar update status	NONE	UPDATED
Data mode	FAINT	FAINT	On-chip summing requested	N	N
Observation mode	SECONDARY	SECONDARY	Subarray requested	NONE	NONE
[deg] Pointing RA	0	90.01294380389517	Alternating exposures requested	N	N
[deg] Pointing Dec	0	-32.02652121924578	[s] Primary exposure time	0.000000	3.2
[deg] Pointing Roll	0.0	259.7751516271361			
[mm] SIM focus pos	-0.782348	-0.6828225247311905			
[mm] SIM defocus	0	0.8505141146731063			
[mm] SIM translation stage pos	-233.592463	250.466033080201			
[mm] SIM translation stage offset	0	-0.01005468664627074			
[s] Observation start time (MET)	102567654.861	102567654.09227			
Observation start date	2001-04-02T03:00:55	2001-04-02T03:00:54			
[s] Observation end time (MET)	102580100.411	102580099.64276			
Observation end date	2001-04-02T06:28:20	2001-04-02T06:28:19			
Read mode	TIMED	TIMED			

2.3 Star Slots

2.4 FID Slots

A Summary

A.1 Status

V&V Scientist	Jen Lauer
V&V Date (YYYY-MM-DD)	2012.09.18
V&V Edition	1
V&V Disposition and Status	OK
V&V Charge Time	5.9902661956698

A.2 Comments