

V&V Reference Report

L2 ASCDS Version : 8.4.5

Observation 61630 - L2 Version 4
Chandra X-Ray Center

L2 Processing Date : Sep 16 2012

Contents

1	Front	2
2	OBI	3
2.1	OBI	3
2.1.1	Images	3
2.1.2	Bias	3
2.1.3	Parameters	4
2.1.4	Events	4
2.2	Compared Parameters	5
2.3	Star Slots	6
2.4	FID Slots	6
A	Summary	7
A.1	Status	7
A.2	Comments	7

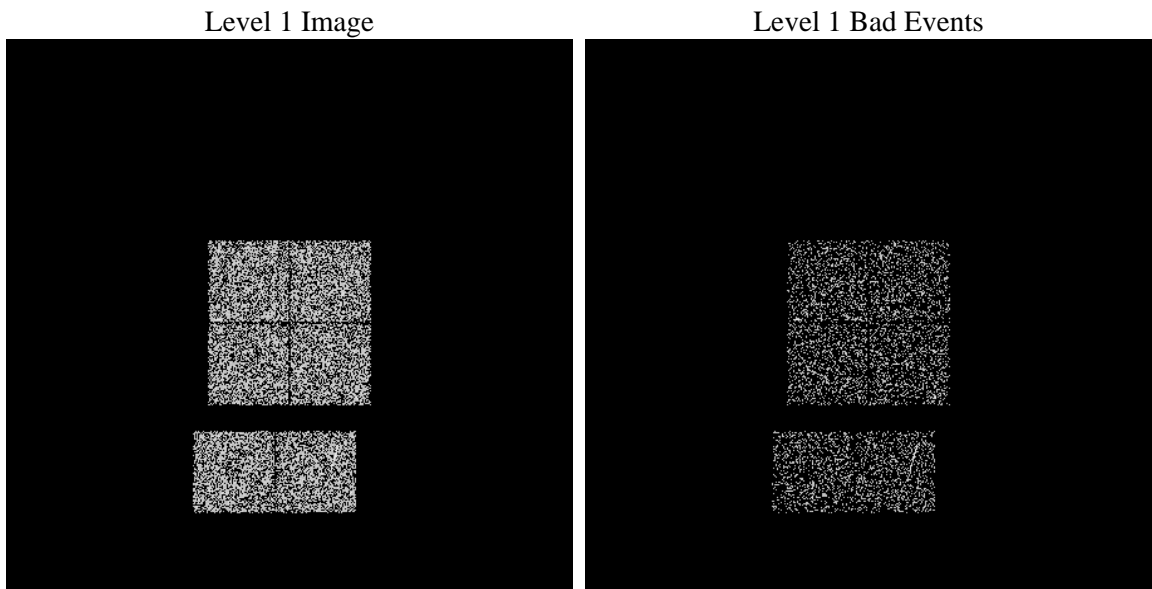
1 Front

seq_num	 	Sequence number
obs_id	61630	Observation id
title	ACIS-012367 diagnostics	Proposal title
observer	CHANDRA engineering request/realtime commanding	Principal investig
object	 	Source name
dtcycle	0	
cycle	P	events from which exps? Prim/Second/Both
ra_targ	0.0	Observer's specified target RA [deg]
dec_targ	0.0	Observer's specified target Dec [deg]
ra_nom	224.98464714111	Nominal RA [deg]
dec_nom	-0.024171429986775	Nominal Dec [deg]
roll_nom	204.79698311184	Nominal Roll [deg]
revision	4	Processing version of data
ontime	37.886658802629	Sum of GTIs [s]
livetime	37.406915116263	Livetime [s]
ontime0	37.845618799329	Sum of GTIs [s]
ontime1	37.80457881093	Sum of GTIs [s]
ontime2	37.763538807631	Sum of GTIs [s]
ontime3	37.927698805928	Sum of GTIs [s]
ontime6	37.722498804331	Sum of GTIs [s]
ontime7	37.886658802629	Sum of GTIs [s]
l2events	14594	Number of level 2 events

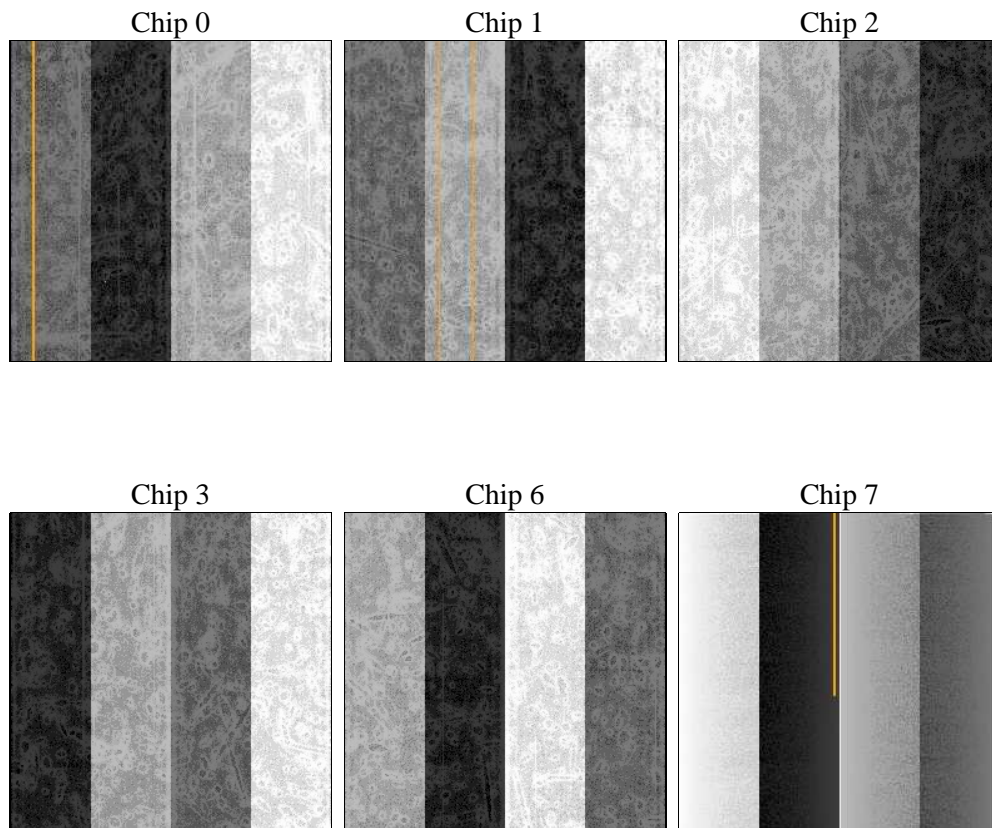
2 OBI

2.1 OBI

2.1.1 Images



2.1.2 Bias



2.1.3 Parameters

obi_num	0	Obi number	sched_exp_time	0.0	[s] Scheduled observation exposure time
ascdsver	8.4.5	Processing system revision	ontime	37.886658802629	Sum of GTIs [s]
caldsver	4.5.1.1	 	ontime0	37.845618799329	Sum of GTIs [s]
date	2012-09-16T23:06:08	Date and time of file creation	ontime1	37.80457881093	Sum of GTIs [s]
revision	4	Processing version of data	ontime2	37.763538807631	Sum of GTIs [s]
			ontime3	37.927698805928	Sum of GTIs [s]
			ontime6	37.722498804331	Sum of GTIs [s]
			ontime7	37.886658802629	Sum of GTIs [s]
			l1events	22409	Number of level 1 events

2.1.4 Events

	ccd 0	ccd 1	ccd 2	ccd 3	ccd 6	ccd 7
level 1 events	3662	3735	3634	3731	3869	3778
rejected events	1153	1145	1191	1210	1164	1258
rejected %	31%	30%	32%	32%	30%	33%

	ccd 0	ccd 1	ccd 2	ccd 3	ccd 6	ccd 7
grade 0 events	1818	1833	1853	1881	1892	919
	49%	49%	50%	50%	48%	24%
grade 1 events	11	6	10	13	9	4
	0%	0%	0%	0%	0%	0%
grade 2 events	602	603	547	595	628	690
	16%	16%	15%	15%	16%	18%
grade 3 events	204	225	206	205	217	338
	5%	6%	5%	5%	5%	8%
grade 4 events	211	223	207	198	228	374
	5%	5%	5%	5%	5%	9%
grade 5 events	30	26	18	22	25	54
	0%	0%	0%	0%	0%	1%
grade 6 events	491	505	486	479	576	1095
	13%	13%	13%	12%	14%	28%
grade 7 events	295	314	307	338	294	304
	8%	8%	8%	9%	7%	8%

2.2 Compared Parameters

Parameter	Planned	Actual	Parameter	Planned	Actual
Instrument	ACIS	ACIS	Obspar format version number	7	7
Detector	ACIS-012367	ACIS-012367	Obspar file type	PREDICTED	ACTUAL
Grating	NONE	NONE	Obspar update status	NONE	UPDATED
Data mode	FAINT	FAINT	On-chip summing requested	N	N
Observation mode	SECONDARY	SECONDARY	Subarray requested	NONE	NONE
[deg] Pointing RA	0	224.9846471411104	Alternating exposures requested	N	N
[deg] Pointing Dec	0	-0.02417142998677469	[s] Primary exposure time	0.000000	3.2
[deg] Pointing Roll	0.0	204.7969831118373			
[mm] SIM focus pos	-0.782348	-0.7809083437167272			
[mm] SIM defocus	0	0.7524282956875696			
[mm] SIM translation stage pos	-233.592463	250.466033080201			
[mm] SIM translation stage offset	0	-0.01005468664627074			
[s] Observation start time (MET)	106488382.513	106488381.74436			
Observation start date	2001-05-17T12:06:23	2001-05-17T12:06:21			
[s] Observation end time (MET)	106502297.913	106502297.1449			
Observation end date	2001-05-17T15:58:18	2001-05-17T15:58:17			
Read mode	TIMED	TIMED			

2.3 Star Slots

2.4 FID Slots

A Summary

A.1 Status

V&V Scientist	Jen Lauer
V&V Date (YYYY-MM-DD)	2012.09.19
V&V Edition	1
V&V Disposition and Status	OK
V&V Charge Time	0.037886658802629

A.2 Comments

Violation of distance from Chandra to Earth
(Dist_SatEarth:1>=60000000.0). Level 1 files are okay >38 SECONDS of
data. Instrument only on short time in very long interval --> data are
OK as is