

# V&V Reference Report

## L2 ASCDS Version : 7.6.9

Observation 61470 - L2 Version 001  
Chandra X-Ray Center

L2 Processing Date : Jan 3 2007

## Contents

<b>1</b>	<b>Front</b>	<b>2</b>
<b>2</b>	<b>OBI</b>	<b>3</b>
2.1	OBI . . . . .	3
2.1.1	Images . . . . .	3
2.1.2	Bias . . . . .	3
2.1.3	Parameters . . . . .	4
2.1.4	Events . . . . .	4
2.2	Compared Parameters . . . . .	5
2.3	Aspect . . . . .	6
2.4	Star Slots . . . . .	8
2.5	FID Slots . . . . .	8
<b>A</b>	<b>Summary</b>	<b>9</b>
A.1	Status . . . . .	9
A.2	Comments . . . . .	9

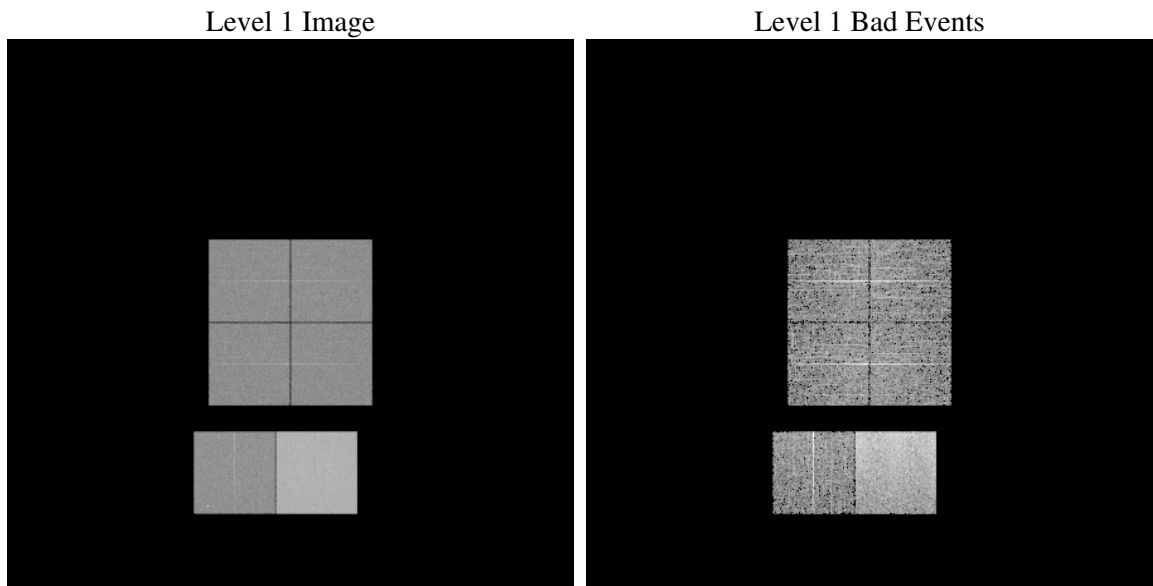
# 1 Front

seq_num	&#160
obs_id	61470
title	ACIS-012367 diagnostics
observer	CHANDRA engineering request/realtime commanding
object	&#160
dtcycle	0
cycle	P
ra_targ	0.0
dec_targ	0.0
ra_nom	122.79091987122
dec_nom	25.727446081369
roll_nom	73.848714812919
revision	2
ontime	7132.2189634591
livetime	7041.9065124371
ontime0	2789.3500461429
ontime1	2786.1504050195
ontime2	2663.0321445763
ontime3	2711.4838536382
ontime6	2938.5602282584
ontime7	7132.2189634591
l2events	1213987

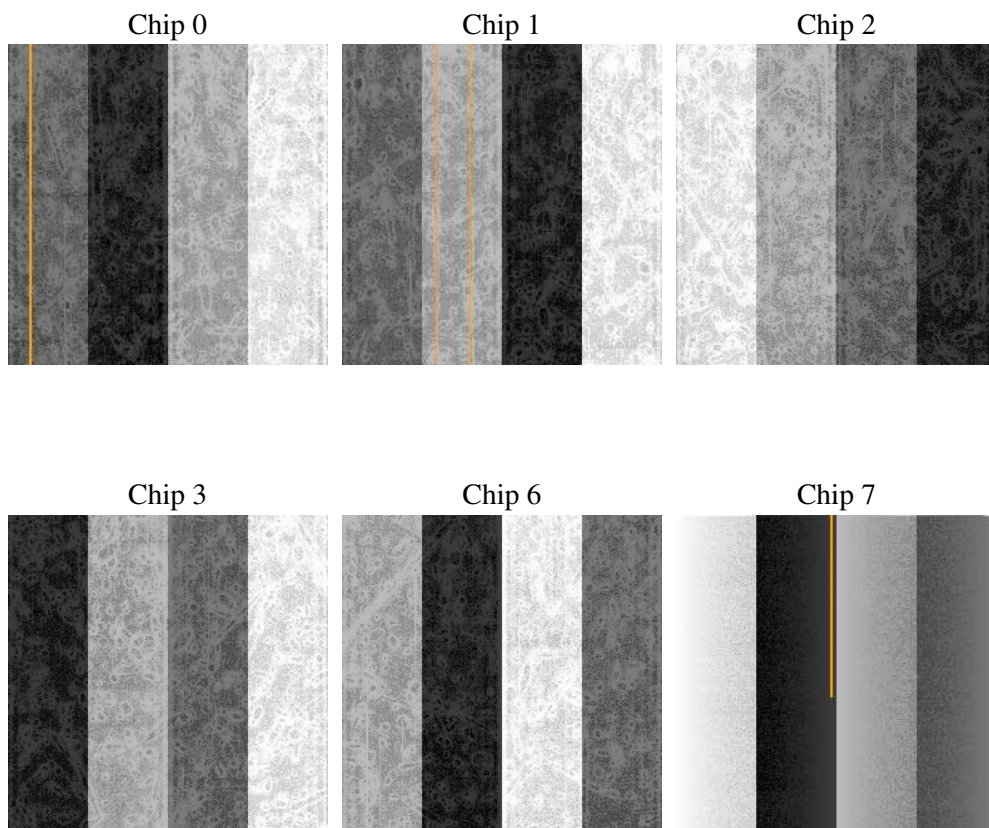
## 2 OBI

### 2.1 OBI

#### 2.1.1 Images



#### 2.1.2 Bias



### 2.1.3 Parameters

obi_num	0
ascdsver	7.6.9
caldbver	3.2.4
date	2007-01-03T20:04:13
revision	2

sched_exp_time	0.0
ontime	7133.4416918904
ontime0	2790.5317345709
ontime1	2787.291053459
ontime2	2664.1317530125
ontime3	2712.7476220727
ontime6	2939.6187966913
ontime7	7133.4416918904
l1events	1424116

### 2.1.4 Events

	ccd 0	ccd 1	ccd 2	ccd 3	ccd 6	ccd 7
level 1 events	185762	186897	182597	184062	205782	479016
rejected events	20976	21171	22165	21780	22323	49485
rejected %	11%	11%	12%	11%	10%	10%

	ccd 0	ccd 1	ccd 2	ccd 3	ccd 6	ccd 7
grade 0 events	90653	91041	89700	90931	100450	84806
	48%	48%	49%	49%	48%	17%
grade 1 events	458	475	455	505	505	177
	0%	0%	0%	0%	0%	0%
grade 2 events	29191	29251	27831	28357	31914	125371
	15%	15%	15%	15%	15%	26%
grade 3 events	10456	10643	10064	10364	11378	34230
	5%	5%	5%	5%	5%	7%
grade 4 events	10371	10602	10079	10273	11091	33716
	5%	5%	5%	5%	5%	7%
grade 5 events	1480	1548	1484	1515	1723	7267
	0%	0%	0%	0%	0%	1%
grade 6 events	24115	24189	22758	22357	28626	151408
	12%	12%	12%	12%	13%	31%
grade 7 events	19038	19148	20226	19760	20095	42041
	10%	10%	11%	10%	9%	8%

## 2.2 Compared Parameters

Parameter	Planned	Actual	Parameter	Planned	Actual
Instrument	ACIS	ACIS	Obspar format version number	6	6
Detector	ACIS-012367	ACIS-012367	Obspar file type	PREDICTED	ACTUAL
Grating	NONE	NONE	Obspar update status	NONE	UPDATED
Data mode	FAINT	FAINT	On-chip summing requested	N	N
Observation mode	SECONDARY	SECONDARY	Subarray requested	NONE	NONE
Pointing RA	0	122.7909198712249	Alternating exposures requested	N	N
Pointing Dec	0	25.72744608136932	Primary exposure time	3.2	3.2
Pointing Roll	0.0	73.84871481291881			
SIM focus pos (mm)	-0.782348	-0.6828225247311905			
SIM defocus (mm)	0	0.8505141146731063			
SIM translation stage pos (mm)	-233.592463	250.466033080201			
SIM translation stage offset (mm)	0	-0.01005468664627074			
Observation start time	117192956.082535	117192955.31406			
Observation start date	2001-09-18T09:35:56	2001-09-18T09:35:55			
Observation end time	117235073.334197	117235072.56573			
Observation end date	2001-09-18T21:17:53	2001-09-18T21:17:52			
Read mode	TIMED	TIMED			

## 2.3 Aspect



## **2.4 Star Slots**

## **2.5 FID Slots**



## A Summary

### A.1 Status

V&V Scientist	Beth Sundheim
V&V Date (YYYY-MM-DD)	2007.01.04
V&V Edition	1
V&V Disposition and Status	OK
V&V Charge Time	7.13221896

### A.2 Comments