

V&V Reference Report

L2 ASCDS Version : 7.6.9

Observation 61450 - L2 Version 001
Chandra X-Ray Center

L2 Processing Date : Jan 5 2007

Contents

1	Front	2
2	OBI	3
2.1	OBI	3
2.1.1	Images	3
2.1.2	Bias	3
2.1.3	Parameters	4
2.1.4	Events	4
2.2	Compared Parameters	5
2.3	Aspect	6
2.4	Star Slots	8
2.5	FID Slots	8
A	Summary	9
A.1	Status	9
A.2	Comments	9

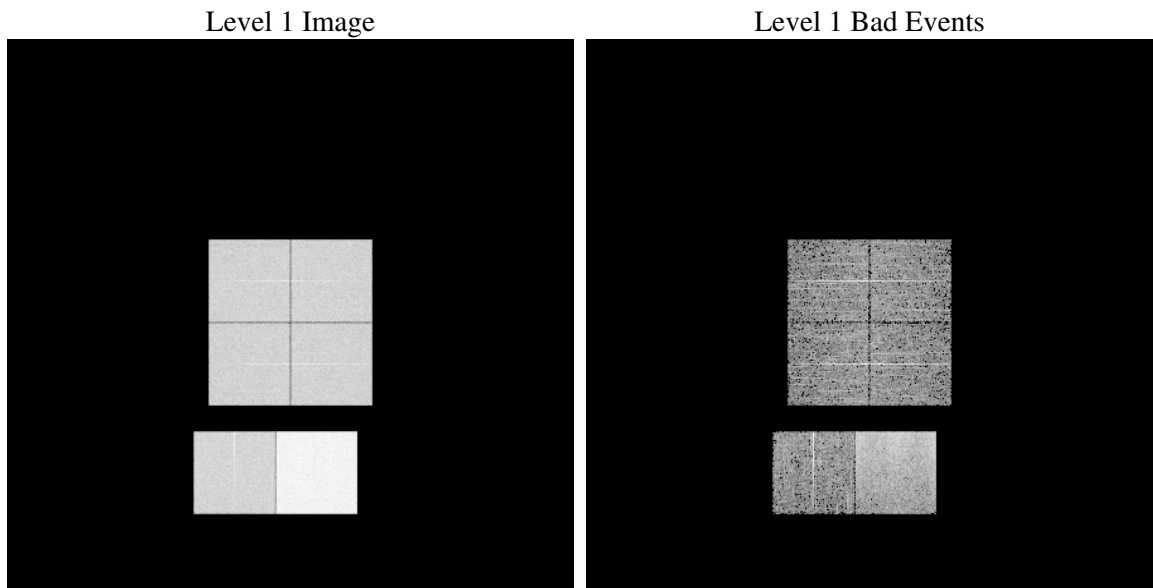
1 Front

seq_num	
obs_id	61450
title	ACIS-012367 diagnostics
observer	CHANDRA engineering request/realtime commanding
object	
dtcycle	0
cycle	P
ra_targ	0.0
dec_targ	0.0
ra_nom	136.99753646856
dec_nom	40.028558027881
roll_nom	61.027742056908
revision	2
ontime	6822.0484619737
livetime	6735.6635766037
ontime0	2868.6548098922
ontime1	2881.0196496397
ontime2	2787.7114286274
ontime3	2813.4750003815
ontime6	2916.6708107144
ontime7	6822.0484619737
l2events	1225498

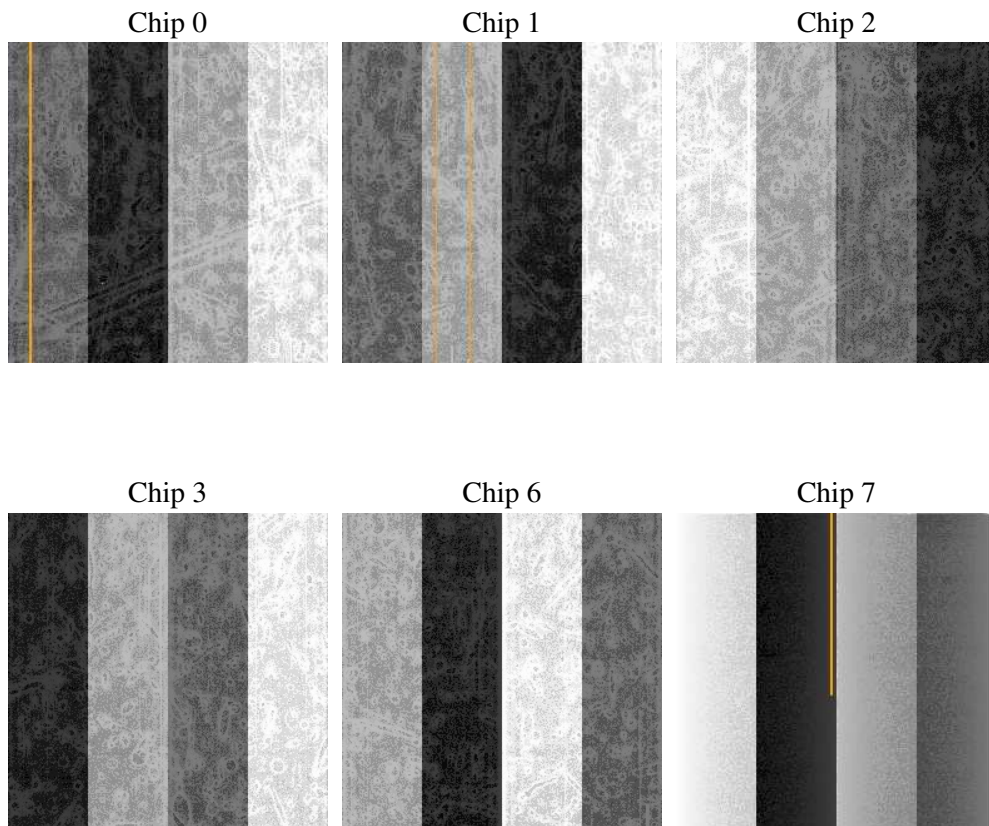
2 OBI

2.1 OBI

2.1.1 Images



2.1.2 Bias



2.1.3 Parameters

obi_num	1
ascdsver	7.6.9
caldbver	3.2.4
date	2007-01-05T17:48:04
revision	2

sched_exp_time	0.0
ontime	6825.5506168008
ontime0	2871.5577042401
ontime1	2884.5218044668
ontime2	2790.5322429836
ontime3	2816.459974736
ontime6	2920.1729655415
ontime7	6825.5506168008
l1events	1424358

2.1.4 Events

	ccd 0	ccd 1	ccd 2	ccd 3	ccd 6	ccd 7
level 1 events	191547	192675	189392	190508	205614	454622
rejected events	19945	20234	20171	20047	21303	44809
rejected %	10%	10%	10%	10%	10%	9%

	ccd 0	ccd 1	ccd 2	ccd 3	ccd 6	ccd 7
grade 0 events	94412	95490	94428	95143	100229	79256
	49%	49%	49%	49%	48%	17%
grade 1 events	446	487	481	509	478	173
	0%	0%	0%	0%	0%	0%
grade 2 events	30590	30459	29800	29793	31866	121837
	15%	15%	15%	15%	15%	26%
grade 3 events	11009	10784	10617	10860	11340	31900
	5%	5%	5%	5%	5%	7%
grade 4 events	10806	10831	10566	10786	11478	31287
	5%	5%	5%	5%	5%	6%
grade 5 events	1473	1452	1354	1451	1665	6625
	0%	0%	0%	0%	0%	1%
grade 6 events	24966	25057	24000	24052	29608	145710
	13%	13%	12%	12%	14%	32%
grade 7 events	17845	18115	18146	17914	18950	37834
	9%	9%	9%	9%	9%	8%

2.2 Compared Parameters

Parameter	Planned	Actual	Parameter	Planned	Actual
Instrument	ACIS	ACIS	Obspar format version number	6	6
Detector	ACIS-012367	ACIS-012367	Obspar file type	PREDICTED	ACTUAL
Grating	NONE	NONE	Obspar update status	NONE	UPDATED
Data mode	FAINT	FAINT	On-chip summing requested	N	N
Observation mode	SECONDARY	SECONDARY	Subarray requested	NONE	NONE
Pointing RA	0	136.9975364685595	Alternating exposures requested	N	N
Pointing Dec	0	40.02855802788053	Primary exposure time	0.000000	3.2
Pointing Roll	0.0	61.02774205690844			
SIM focus pos (mm)	-0.782348	-1.428180813131781			
SIM defocus (mm)	0	0.1051558262725154			
SIM translation stage pos (mm)	-233.592463	250.466033080201			
SIM translation stage offset (mm)	0	-0.01005468664627074			
Observation start time	118561568.937	118561568.16832			
Observation start date	2001-10-04T05:46:09	2001-10-04T05:46:08			
Observation end time	118594518.588	118594517.81963			
Observation end date	2001-10-04T14:55:19	2001-10-04T14:55:17			
Read mode	TIMED	TIMED			

2.3 Aspect

2.4 Star Slots

2.5 FID Slots

A Summary

A.1 Status

V&V Scientist	Beth Sundheim
V&V Date (YYYY-MM-DD)	2007.01.05
V&V Edition	1
V&V Disposition and Status	OK
V&V Charge Time	6.82204846

A.2 Comments