

V&V Reference Report

L2 ASCDS Version : 8.4.5

Observation 61420 - L2 Version 3
Chandra X-Ray Center

L2 Processing Date : Sep 26 2012

Contents

1	Front	2
2	OBI	3
2.1	OBI	3
2.1.1	Images	3
2.1.2	Bias	3
2.1.3	Parameters	4
2.1.4	Events	4
2.2	Compared Parameters	5
2.3	Star Slots	6
2.4	FID Slots	6
A	Summary	7
A.1	Status	7
A.2	Comments	7

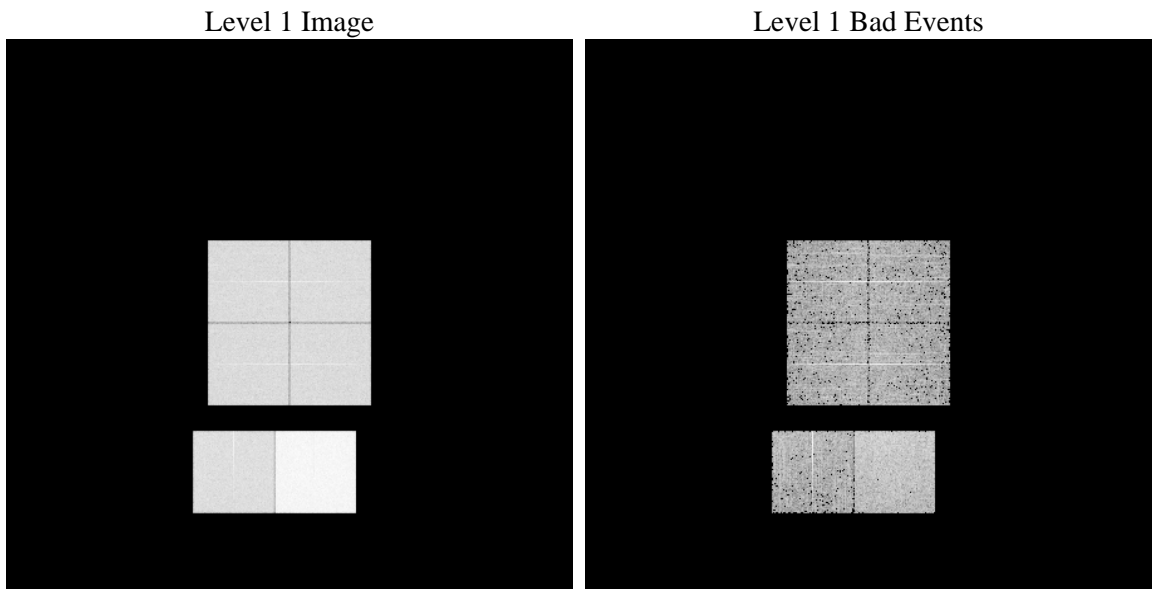
1 Front

seq_num	 	Sequence number
obs_id	61420	Observation id
title	ACIS-012367 diagnostics	Proposal title
observer	CHANDRA engineering request/realtime commanding	Principal investig
object	 	Source name
dtcycle	0	
cycle	P	events from which exps? Prim/Second/Both
ra_targ	0.0	Observer's specified target RA [deg]
dec_targ	0.0	Observer's specified target Dec [deg]
ra_nom	140.98312269507	Nominal RA [deg]
dec_nom	60.02734816289	Nominal Dec [deg]
roll_nom	74.321088407536	Nominal Roll [deg]
revision	3	Processing version of data
ontime	7272.5811699629	Sum of GTIs [s]
livetime	7180.4913681662	Livetime [s]
ontime0	2860.6787318736	Sum of GTIs [s]
ontime1	2893.1295738667	Sum of GTIs [s]
ontime2	2747.3250700235	Sum of GTIs [s]
ontime3	2786.0530909151	Sum of GTIs [s]
ontime6	3026.9007716477	Sum of GTIs [s]
ontime7	7272.5811699629	Sum of GTIs [s]
l2events	1224994	Number of level 2 events

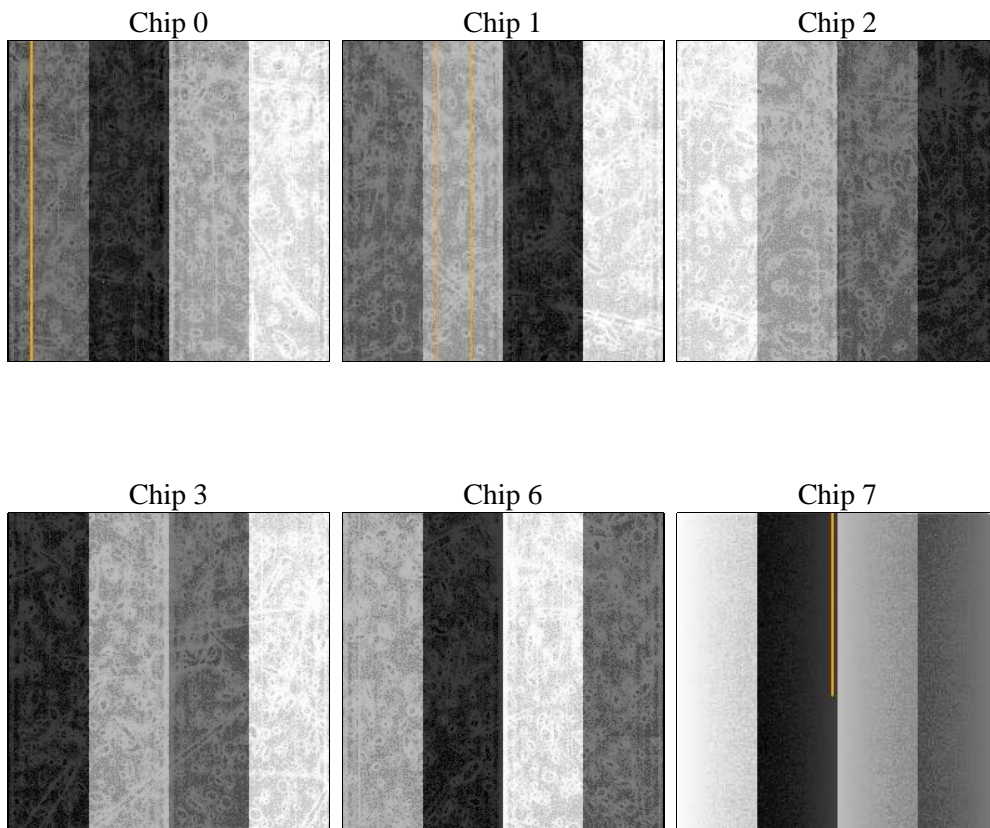
2 OBI

2.1 OBI

2.1.1 Images



2.1.2 Bias



2.1.3 Parameters

obi_num	0	Obi number	sched_exp_time	0.0	[s] Scheduled observation exposure time
ascdsver	8.4.5	Processing system revision	ontime	7272.5811699629	Sum of GTIs [s]
caldsver	4.5.1.1	 	ontime0	2860.6787318736	Sum of GTIs [s]
date	2012-09-26T08:57:03	Date and time of file creation	ontime1	2893.1295738667	Sum of GTIs [s]
revision	3	Processing version of data	ontime2	2747.3250700235	Sum of GTIs [s]
			ontime3	2786.0530909151	Sum of GTIs [s]
			ontime6	3026.9007716477	Sum of GTIs [s]
			ontime7	7272.5811699629	Sum of GTIs [s]
			l1events	1421226	Number of level 1 events

2.1.4 Events

	ccd 0	ccd 1	ccd 2	ccd 3	ccd 6	ccd 7		ccd 0	ccd 1	ccd 2	ccd 3	ccd 6	ccd 7
level 1 events	185269	187769	181676	183917	206362	476233	grade 0 events	90612	92093	89062	90884	100151	112391
rejected events	20455	20492	21485	21605	22936	38355		48%	49%	49%	49%	48%	23%
rejected %	11%	10%	11%	11%	11%	8%	grade 1 events	433	445	476	473	495	269
								0%	0%	0%	0%	0%	0%
							grade 2 events	29213	29476	28177	28407	31825	97238
								15%	15%	15%	15%	15%	20%
							grade 3 events	10493	10825	10105	10197	11357	44554
								5%	5%	5%	5%	5%	9%
							grade 4 events	10361	10552	10188	10345	11335	44542
								5%	5%	5%	5%	5%	9%
							grade 5 events	1505	1509	1362	1516	1712	7884
								0%	0%	0%	0%	0%	1%
							grade 6 events	24135	24331	22659	22479	28940	139342
								13%	12%	12%	12%	14%	29%
							grade 7 events	18517	18538	19647	19616	20547	30013
								9%	9%	10%	10%	9%	6%

2.2 Compared Parameters

Parameter	Planned	Actual
Instrument	ACIS	ACIS
Detector	ACIS-012367	ACIS-012367
Grating	NONE	NONE
Data mode	FAINT	FAINT
Observation mode	SECONDARY	SECONDARY
[deg] Pointing RA	0	140.9831226950658
[deg] Pointing Dec	0	60.02734816288974
[deg] Pointing Roll	0.0	74.32108840753634
[mm] SIM focus pos	-0.782348	-0.6828225247311905
[mm] SIM defocus	0	0.8505141146731063
[mm] SIM translation stage pos	-233.592463	250.4635187648994
[mm] SIM translation stage offset	0	-0.007540371344731511
[s] Observation start time (MET)	121077847.687	121077846.91821
Observation start date	2001-11-02T08:44:08	2001-11-02T08:44:06
[s] Observation end time (MET)	121109958.888	121109958.11948
Observation end date	2001-11-02T17:39:19	2001-11-02T17:39:18
Read mode	TIMED	TIMED

Parameter	Planned	Actual
Obspar format version number	7	7
Obspar file type	PREDICTED	ACTUAL
Obspar update status	NONE	UPDATED
On-chip summing requested	N	N
Subarray requested	NONE	NONE
Alternating exposures requested	N	N
[s] Primary exposure time	0.000000	3.2

2.3 Star Slots

2.4 FID Slots

A Summary

A.1 Status

V&V Scientist	Beth Sundheim
V&V Date (YYYY-MM-DD)	2012.09.28
V&V Edition	1
V&V Disposition and Status	OK
V&V Charge Time	7.2725811699629

A.2 Comments