

V&V Reference Report

L2 ASCDS Version : 8.4.5

Observation 61410 - L2 Version 3
Chandra X-Ray Center

L2 Processing Date : Sep 27 2012

Contents

1	Front	2
2	OBI	3
2.1	OBI	3
2.1.1	Images	3
2.1.2	Bias	3
2.1.3	Parameters	4
2.1.4	Events	4
2.2	Compared Parameters	5
2.3	Star Slots	6
2.4	FID Slots	6
A	Summary	7
A.1	Status	7
A.2	Comments	7

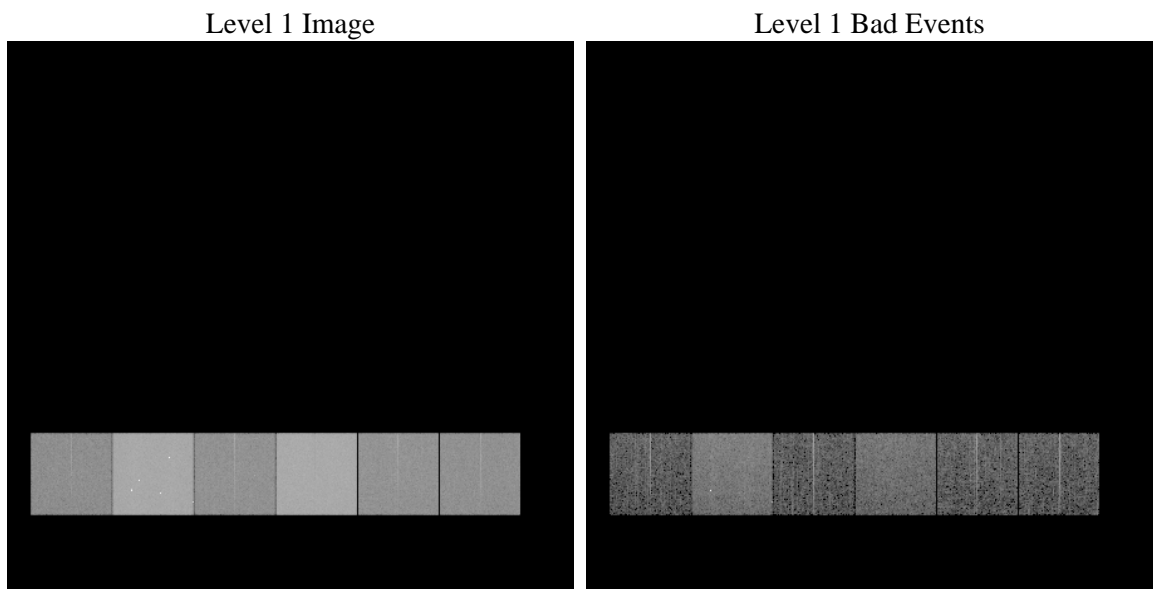
1 Front

seq_num	 	Sequence number
obs_id	61410	Observation id
title	ACIS-456789 diagnostics	Proposal title
observer	CHANDRA engineering request/realtime commanding	Principal investig
object	 	Source name
dtcycle	0	
cycle	P	events from which exps? Prim/Second/Both
ra_targ	0.0	Observer's specified target RA [deg]
dec_targ	0.0	Observer's specified target Dec [deg]
ra_nom	123.98488936278	Nominal RA [deg]
dec_nom	35.025813271325	Nominal Dec [deg]
roll_nom	82.887175351205	Nominal Roll [deg]
revision	3	Processing version of data
ontime	6554.08454144	Sum of GTIs [s]
livetime	6471.0927765804	Livetime [s]
ontime4	2473.5508999974	Sum of GTIs [s]
ontime5	6939.7180915326	Sum of GTIs [s]
ontime6	2681.0182801336	Sum of GTIs [s]
ontime7	6554.08454144	Sum of GTIs [s]
ontime8	2765.20281142	Sum of GTIs [s]
ontime9	2626.0434412211	Sum of GTIs [s]
l2events	1296702	Number of level 2 events

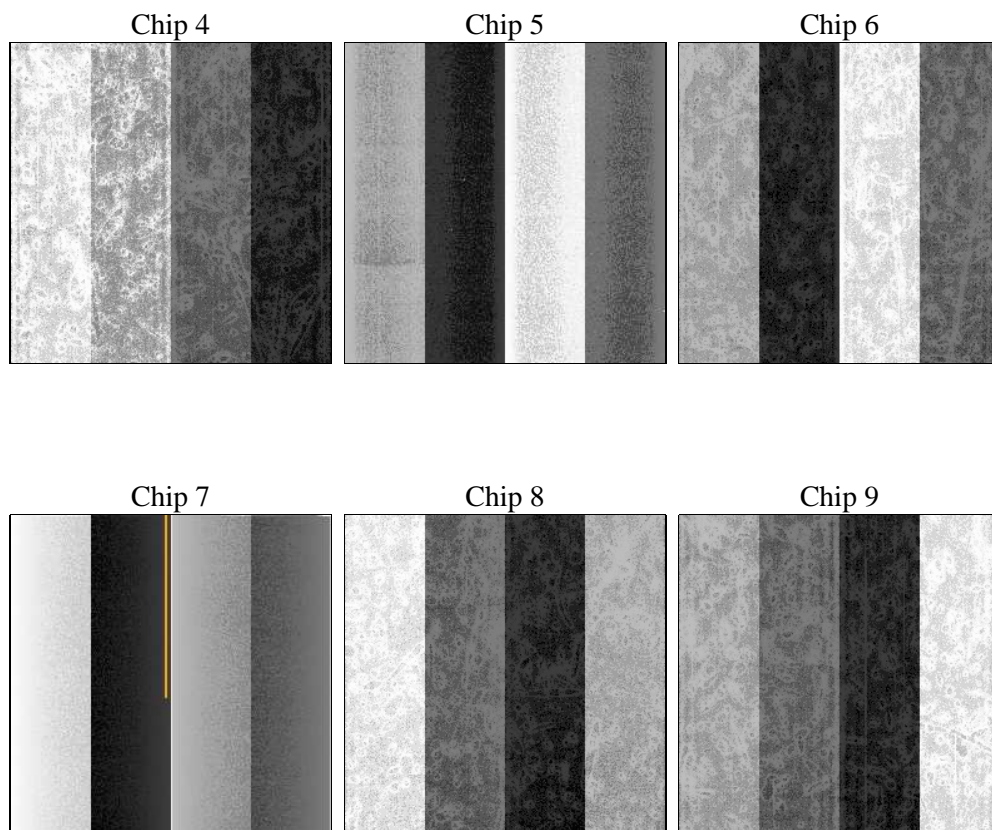
2 OBI

2.1 OBI

2.1.1 Images



2.1.2 Bias



2.1.3 Parameters

obi_num	1	Obi number	sched_exp_time	0.0	[s] Scheduled observation exposure time
ascdsver	8.4.5	Processing system revision	ontime	6554.08454144	Sum of GTIs [s]
caldsver	4.5.1.1	 	ontime4	2473.5508999974	Sum of GTIs [s]
date	2012-09-27T05:52:33	Date and time of file creation	ontime5	6939.7180915326	Sum of GTIs [s]
revision	3	Processing version of data	ontime6	2681.0182801336	Sum of GTIs [s]
			ontime7	6554.08454144	Sum of GTIs [s]
			ontime8	2765.20281142	Sum of GTIs [s]
			ontime9	2626.0434412211	Sum of GTIs [s]
			l1events	1543121	Number of level 1 events

2.1.4 Events

	ccd 4	ccd 5	ccd 6	ccd 7	ccd 8	ccd 9		ccd 4	ccd 5	ccd 6	ccd 7	ccd 8	ccd 9
level 1 events	158406	414375	182907	424599	189921	172913	grade 0 events	77590	81938	88716	98609	92010	83737
rejected events	21977	55978	22617	37840	24368	22431		48%	19%	48%	23%	48%	48%
rejected %	13%	13%	12%	8%	12%	12%	grade 1 events	424	354	408	254	440	411
								0%	0%	0%	0%	0%	0%
							grade 2 events	24598	137481	27893	86168	29427	26435
								15%	33%	15%	20%	15%	15%
							grade 3 events	8301	20419	9831	39431	10297	9471
								5%	4%	5%	9%	5%	5%
							grade 4 events	8244	19929	9608	39295	10399	9365
								5%	4%	5%	9%	5%	5%
							grade 5 events	1309	9752	1586	7087	1702	1489
								0%	2%	0%	1%	0%	0%
							grade 6 events	18592	101421	25625	126352	24610	22768
								11%	24%	14%	29%	12%	13%
							grade 7 events	19348	43081	19240	27403	21036	19237
								12%	10%	10%	6%	11%	11%

2.2 Compared Parameters

Parameter	Planned	Actual	Parameter	Planned	Actual
Instrument	ACIS	ACIS	Obspar format version number	7	7
Detector	ACIS-456789	ACIS-456789	Obspar file type	PREDICTED	ACTUAL
Grating	NONE	NONE	Obspar update status	NONE	UPDATED
Data mode	FAINT	FAINT	On-chip summing requested	N	N
Observation mode	SECONDARY	SECONDARY	Subarray requested	NONE	NONE
[deg] Pointing RA	0	123.9848893627844	Alternating exposures requested	N	N
[deg] Pointing Dec	0	35.02581327132521	[s] Primary exposure time	3.2	3.2
[deg] Pointing Roll	0.0	82.88717535120463			
[mm] SIM focus pos	-0.684267	-0.7809083437167272			
[mm] SIM defocus	0	0.7524282956875696			
[mm] SIM translation stage pos	-190.132523	250.466033080201			
[mm] SIM translation stage offset	0	-0.01005468664627074			
[s] Observation start time (MET)	122022536.924332	122022536.15587			
Observation start date	2001-11-13T07:08:57	2001-11-13T07:08:56			
[s] Observation end time (MET)	122043846.675184	122043845.90672			
Observation end date	2001-11-13T13:04:07	2001-11-13T13:04:05			
Read mode	TIMED	TIMED			

2.3 Star Slots

2.4 FID Slots

A Summary

A.1 Status

V&V Scientist	Beth Sundheim
V&V Date (YYYY-MM-DD)	2012.09.27
V&V Edition	1
V&V Disposition and Status	OK
V&V Charge Time	6.55408454144

A.2 Comments