

V&V Reference Report

L2 ASCDS Version : 8.4.5

Observation 61350 - L2 Version 3
Chandra X-Ray Center

L2 Processing Date : Sep 30 2012

Contents

1	Front	2
2	OBI	3
2.1	OBI	3
2.1.1	Images	3
2.1.2	Bias	3
2.1.3	Parameters	4
2.1.4	Events	4
2.2	Compared Parameters	5
2.3	Star Slots	6
2.4	FID Slots	6
A	Summary	7
A.1	Status	7
A.2	Comments	7

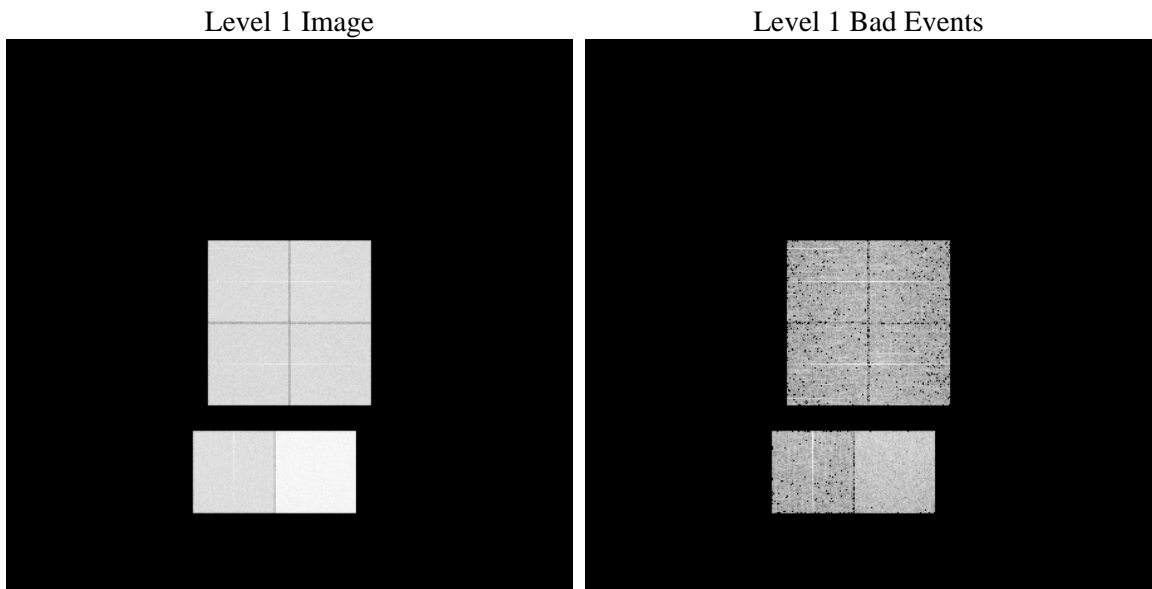
1 Front

seq_num	 	Sequence number
obs_id	61350	Observation id
title	ACIS-012367 diagnostics	Proposal title
observer	CHANDRA engineering request/realtime commanding	Principal investig
object	 	Source name
dtcycle	0	
cycle	P	events from which exps? Prim/Second/Both
ra_targ	0.0	Observer's specified target RA [deg]
dec_targ	0.0	Observer's specified target Dec [deg]
ra_nom	197.49470474055	Nominal RA [deg]
dec_nom	-6.4718661183344	Nominal Dec [deg]
roll_nom	67.837363043429	Nominal Roll [deg]
revision	3	Processing version of data
ontime	8294.4000077099	Sum of GTIs [s]
livetime	8189.3713205242	Livetime [s]
ontime0	3253.568241328	Sum of GTIs [s]
ontime1	3392.9732435197	Sum of GTIs [s]
ontime2	3099.1135080457	Sum of GTIs [s]
ontime3	3156.2548816353	Sum of GTIs [s]
ontime6	3503.2503045946	Sum of GTIs [s]
ontime7	8294.4000077099	Sum of GTIs [s]
l2events	1326850	Number of level 2 events

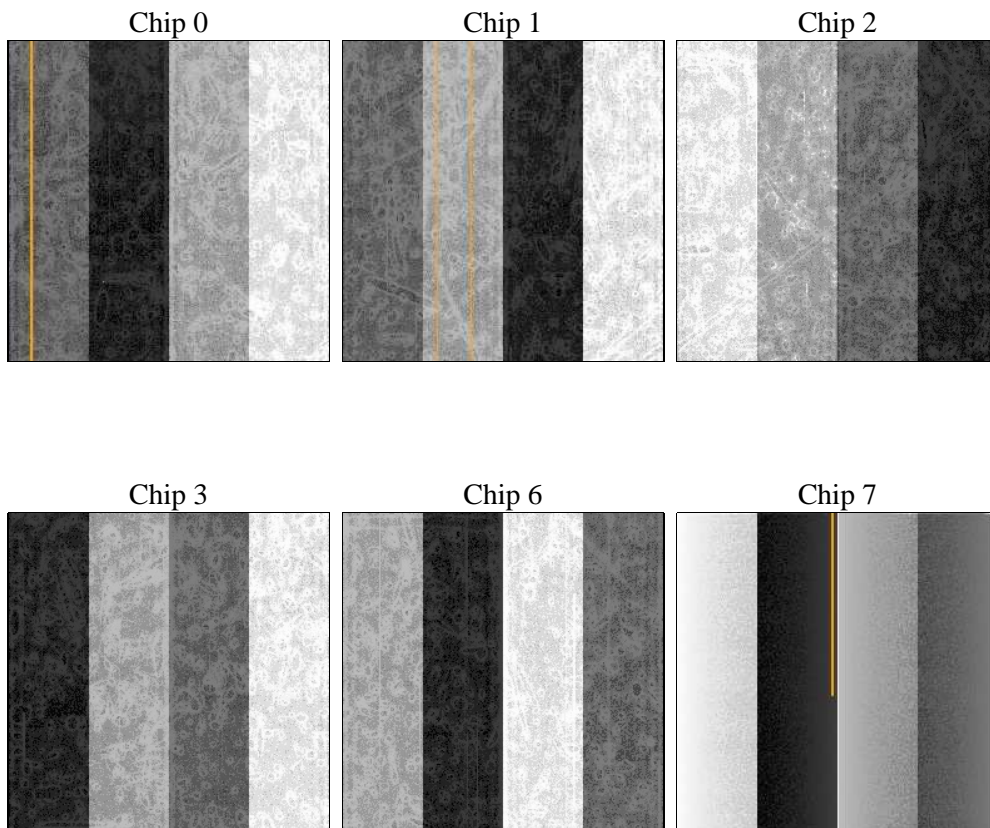
2 OBI

2.1 OBI

2.1.1 Images



2.1.2 Bias



2.1.3 Parameters

obi_num	1	Obi number	sched_exp_time	0.0	[s] Scheduled observation exposure time
ascdsver	8.4.5	Processing system revision	ontime	8294.4000077099	Sum of GTIs [s]
caldsver	4.5.2	 	ontime0	3253.568241328	Sum of GTIs [s]
date	2012-09-30T08:47:48	Date and time of file creation	ontime1	3392.9732435197	Sum of GTIs [s]
revision	3	Processing version of data	ontime2	3099.1135080457	Sum of GTIs [s]
			ontime3	3156.2548816353	Sum of GTIs [s]
			ontime6	3503.2503045946	Sum of GTIs [s]
			ontime7	8294.4000077099	Sum of GTIs [s]
			l1events	1538991	Number of level 1 events

2.1.4 Events

	ccd 0	ccd 1	ccd 2	ccd 3	ccd 6	ccd 7		ccd 0	ccd 1	ccd 2	ccd 3	ccd 6	ccd 7
level 1 events	200504	207770	193655	198249	225439	513374	grade 0 events	97964	102818	94803	97533	109861	119584
rejected events	22859	21741	22836	23395	23545	42175		48%	49%	48%	49%	48%	23%
rejected %	11%	10%	11%	11%	10%	8%	grade 1 events	473	499	473	519	543	309
								0%	0%	0%	0%	0%	0%
							grade 2 events	31303	32687	29873	30598	35250	104320
								15%	15%	15%	15%	15%	20%
							grade 3 events	11280	11878	10824	11092	12409	47657
								5%	5%	5%	5%	5%	9%
							grade 4 events	11317	11701	10625	11058	12396	47657
								5%	5%	5%	5%	5%	9%
							grade 5 events	1634	1738	1534	1644	1859	8773
								0%	0%	0%	0%	0%	1%
							grade 6 events	25781	26945	24873	24573	31978	152181
								12%	12%	12%	12%	14%	29%
							grade 7 events	20752	19504	20650	21232	21143	32893
								10%	9%	10%	10%	9%	6%

2.2 Compared Parameters

Parameter	Planned	Actual	Parameter	Planned	Actual
Instrument	ACIS	ACIS	Obspar format version number	7	7
Detector	ACIS-012367	ACIS-012367	Obspar file type	PREDICTED	ACTUAL
Grating	NONE	NONE	Obspar update status	NONE	UPDATED
Data mode	FAINT	FAINT	On-chip summing requested	N	N
Observation mode	SECONDARY	SECONDARY	Subarray requested	NONE	NONE
[deg] Pointing RA	0	197.4947047405491	Alternating exposures requested	N	N
[deg] Pointing Dec	0	-6.471866118334444	[s] Primary exposure time	0.000000	3.2
[deg] Pointing Roll	0.0	67.83736304342864			
[mm] SIM focus pos	-0.782348	-0.6828225247311905			
[mm] SIM defocus	0	0.8505141146731063			
[mm] SIM translation stage pos	-233.592463	250.466033080201			
[mm] SIM translation stage offset	0	-0.01005468664627074			
[s] Observation start time (MET)	127277763.385	127277762.61644			
Observation start date	2002-01-13T02:56:03	2002-01-13T02:56:02			
[s] Observation end time (MET)	127299073.136	127299072.3673			
Observation end date	2002-01-13T08:51:13	2002-01-13T08:51:12			
Read mode	TIMED	TIMED			

2.3 Star Slots

2.4 FID Slots

A Summary

A.1 Status

V&V Scientist	Jen Lauer
V&V Date (YYYY-MM-DD)	2012.10.02
V&V Edition	1
V&V Disposition and Status	OK
V&V Charge Time	8.2944000077099

A.2 Comments