

V&V Reference Report

L2 ASCDS Version : 7.6.9

Observation 61090 - L2 Version 001
Chandra X-Ray Center

L2 Processing Date : Sep 30 2006

Contents

1	Front	2
2	OBI	3
2.1	OBI	3
2.1.1	Images	3
2.1.2	Bias	3
2.1.3	Parameters	4
2.1.4	Events	4
2.2	Compared Parameters	5
2.3	Aspect	6
2.4	Star Slots	8
2.5	FID Slots	8
A	Summary	9
A.1	Status	9
A.2	Comments	9

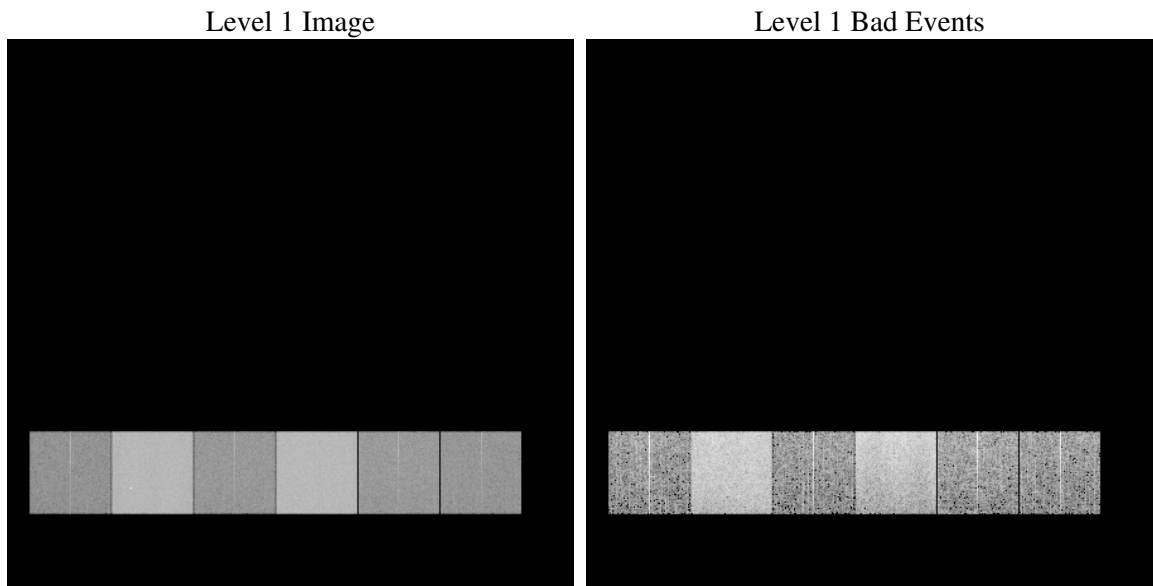
1 Front

seq_num	
obs_id	61090
title	ACIS-456789 diagnostics
observer	CHANDRA engineering request/realtime commanding
object	
dtcycle	0
cycle	P
ra_targ	0.0
dec_targ	0.0
ra_nom	349.87397339145
dec_nom	2.5120847287448
roll_nom	122.36593501264
revision	2
ontime	7972.1928221285
livetime	7871.2441163365
ontime4	2913.1458544433
ontime5	8399.9999687076
ontime6	3208.0381085277
ontime7	7972.1928221285
ontime8	3292.3868798614
ontime9	3097.7199380696
l2events	1278197

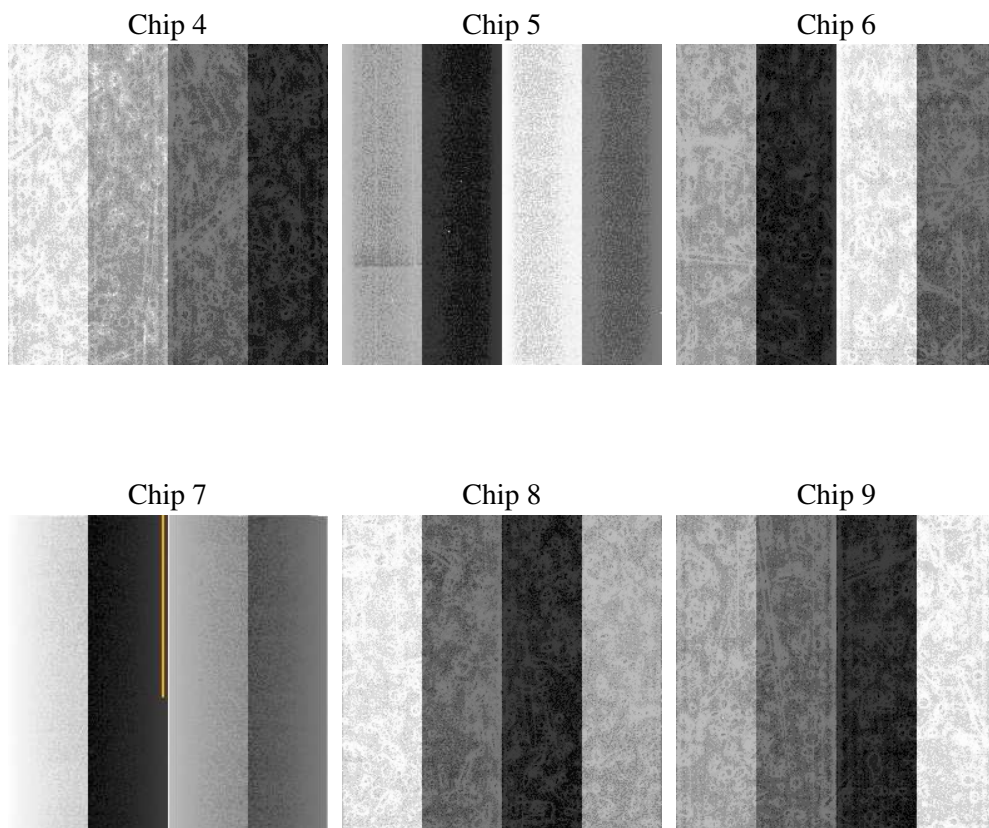
2 OBI

2.1 OBI

2.1.1 Images



2.1.2 Bias



2.1.3 Parameters

obi_num	0
ascdsver	7.6.9
caldsver	3.2.3
date	2006-09-30T16:39:24
revision	2

sched_exp_time	0.0
ontime	8031.208121419
ontime4	2939.6202132702
ontime5	8462.2562183142
ontime6	3234.5534675717
ontime7	8031.208121419
ontime8	3315.5791587234
ontime9	3121.1173670888
l1events	1557896

2.1.4 Events

	ccd 4	ccd 5	ccd 6	ccd 7	ccd 8	ccd 9
level 1 events	156650	419338	181798	436772	191254	172084
rejected events	23730	69428	23045	59060	26107	23152
rejected %	15%	16%	12%	13%	13%	13%

	ccd 4	ccd 5	ccd 6	ccd 7	ccd 8	ccd 9
grade 0 events	78288	38279	87350	66666	91713	83467
	49%	9%	48%	15%	47%	48%
grade 1 events	535	135	420	141	432	495
	0%	0%	0%	0%	0%	0%
grade 2 events	20790	170540	27596	117141	28934	25466
	13%	40%	15%	26%	15%	14%
grade 3 events	8949	11286	9769	27683	10582	9576
	5%	2%	5%	6%	5%	5%
grade 4 events	8916	10786	9873	26800	10535	9337
	5%	2%	5%	6%	5%	5%
grade 5 events	1463	7155	1609	7198	1881	1590
	0%	1%	0%	1%	0%	0%
grade 6 events	17108	121580	25496	142261	24474	22144
	10%	28%	14%	32%	12%	12%
grade 7 events	20601	59577	19685	48882	22703	20009
	13%	14%	10%	11%	11%	11%

2.2 Compared Parameters

Parameter	Planned	Actual	Parameter	Planned	Actual
Instrument	ACIS	ACIS	Obspar format version number	6	6
Detector	ACIS-456789	ACIS-456789	Obspar file type	PREDICTED	ACTUAL
Grating	NONE	NONE	Obspar update status	NONE	UPDATED
Data mode	FAINT	FAINT	On-chip summing requested	N	N
Observation mode	SECONDARY	SECONDARY	Subarray requested	NONE	NONE
Pointing RA	0	349.8739733914515	Alternating exposures requested	N	N
Pointing Dec	0	2.512084728744775	Primary exposure time	0.000000	3.2
Pointing Roll	0.0	122.3659350126444			
SIM focus pos (mm)	-0.684267	-1.428180813131781			
SIM defocus (mm)	0	0.1051558262725154			
SIM translation stage pos (mm)	-190.132523	250.466033080201			
SIM translation stage offset (mm)	0	-0.01005468664627074			
Observation start time	145330357.526	145330356.50121			
Observation start date	2002-08-10T01:32:38	2002-08-10T01:32:36			
Observation end time	145352946.477	145352945.45215			
Observation end date	2002-08-10T07:49:06	2002-08-10T07:49:05			
Read mode	TIMED	TIMED			

2.3 Aspect

2.4 Star Slots

2.5 FID Slots

A Summary

A.1 Status

V&V Scientist	Jen Lauer
V&V Date (YYYY-MM-DD)	2006.10.02
V&V Edition	1
V&V Disposition and Status	OK
V&V Charge Time	7.97219282

A.2 Comments

The ACIS focal plane temperature was above calibration limits for the entire observation.