

# V&V Reference Report

## L2 ASCDS Version : 8.4.5

Observation 61080 - L2 Version 3  
Chandra X-Ray Center

L2 Processing Date : Oct 13 2012

## Contents

<b>1</b>	<b>Front</b>	<b>2</b>
<b>2</b>	<b>OBI</b>	<b>3</b>
2.1	OBI . . . . .	3
2.1.1	Images . . . . .	3
2.1.2	Bias . . . . .	3
2.1.3	Parameters . . . . .	4
2.1.4	Events . . . . .	4
2.2	Compared Parameters . . . . .	5
2.3	Star Slots . . . . .	6
2.4	FID Slots . . . . .	6
<b>A</b>	<b>Summary</b>	<b>7</b>
A.1	Status . . . . .	7
A.2	Comments . . . . .	7

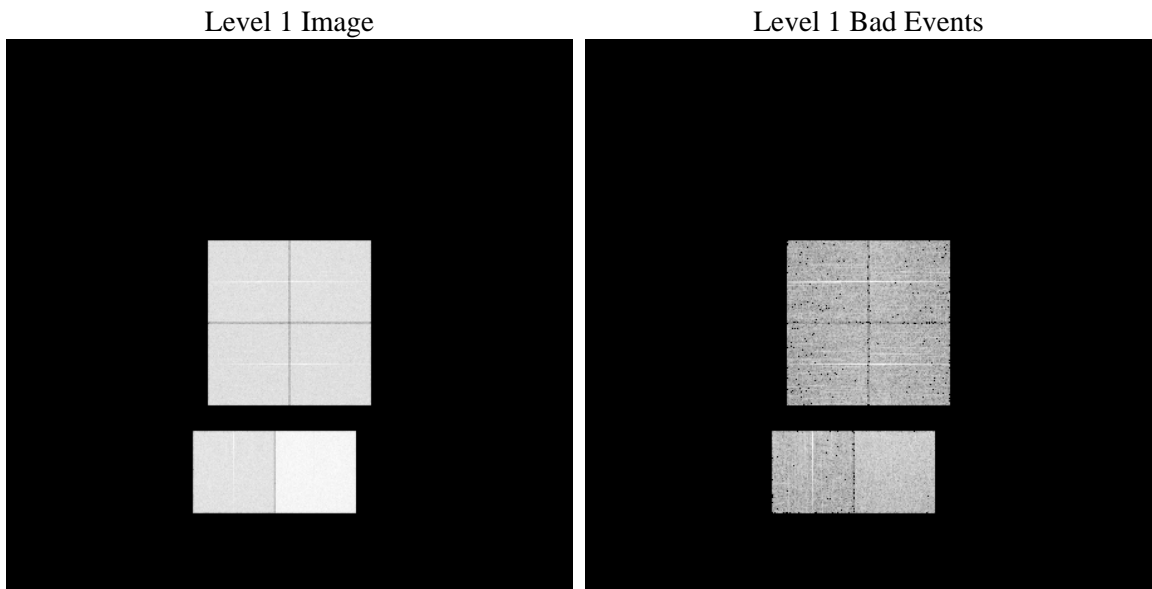
# 1 Front

seq_num	&#160	Sequence number
obs_id	61080	Observation id
title	ACIS-012367 diagnostics	Proposal title
observer	CHANDRA engineering request/realtime commanding	Principal investig
object	&#160	Source name
dtcycle	0	&#160
cycle	P	events from which exps? Prim/Second/Both
ra_targ	0.0	Observer's specified target RA [deg]
dec_targ	0.0	Observer's specified target Dec [deg]
ra_nom	285.72852146947	Nominal RA [deg]
dec_nom	-36.116934664919	Nominal Dec [deg]
roll_nom	290.88237233372	Nominal Roll [deg]
revision	3	Processing version of data
ontime	8406.3999686837	Sum of GTIs [s]
livetime	8299.9530705539	Livetime [s]
ontime0	3937.0941574872	Sum of GTIs [s]
ontime1	3962.2959776521	Sum of GTIs [s]
ontime2	3738.7076289654	Sum of GTIs [s]
ontime3	3751.5072701871	Sum of GTIs [s]
ontime6	4182.7668144703	Sum of GTIs [s]
ontime7	8406.3999686837	Sum of GTIs [s]
l2events	1301865	Number of level 2 events

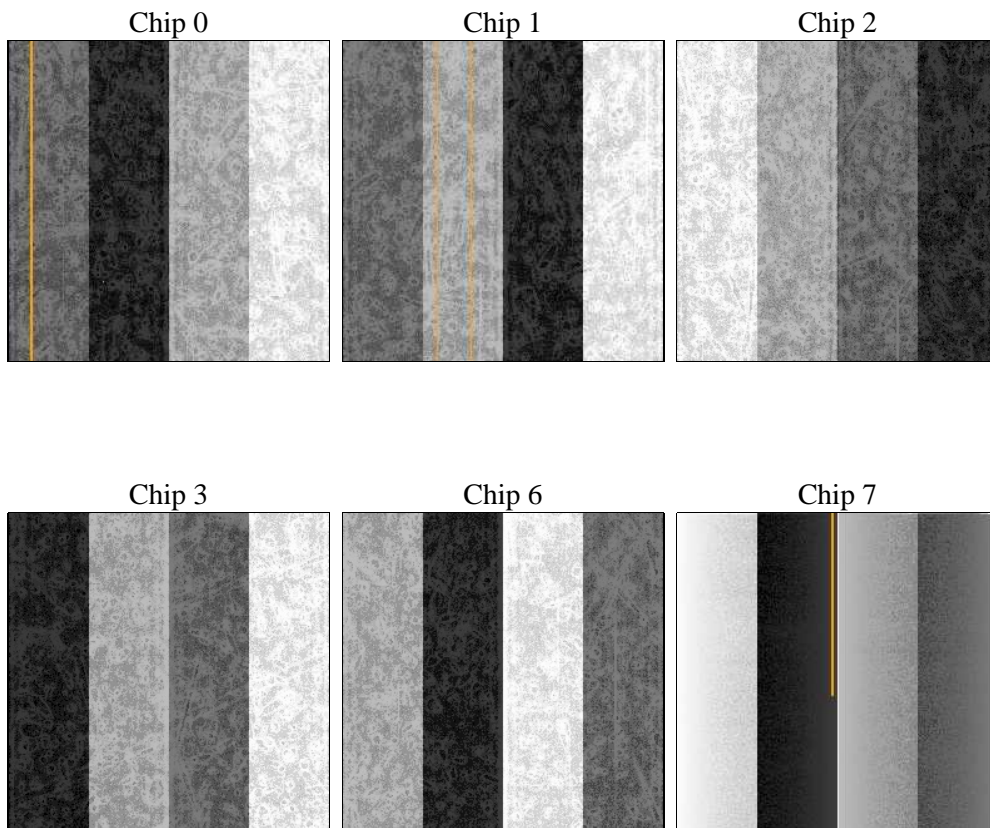
## 2 OBI

### 2.1 OBI

#### 2.1.1 Images



#### 2.1.2 Bias



### 2.1.3 Parameters

obi_num	0	Obi number	sched_exp_time	0.0	[s] Scheduled observation exposure time
ascdsver	8.4.5	Processing system revision	ontime	8406.3999686837	Sum of GTIs [s]
caldbver	4.5.2	&#160	ontime0	3937.0941574872	Sum of GTIs [s]
date	2012-10-14T00:41:38	Date and time of file creation	ontime1	3962.2959776521	Sum of GTIs [s]
revision	3	Processing version of data	ontime2	3738.7076289654	Sum of GTIs [s]
			ontime3	3751.5072701871	Sum of GTIs [s]
			ontime6	4182.7668144703	Sum of GTIs [s]
			ontime7	8406.3999686837	Sum of GTIs [s]
			l1events	1554315	Number of level 1 events

### 2.1.4 Events

	ccd 0	ccd 1	ccd 2	ccd 3	ccd 6	ccd 7		ccd 0	ccd 1	ccd 2	ccd 3	ccd 6	ccd 7
level 1 events	215683	218789	206670	210512	239342	463319	grade 0 events	104496	104796	101995	102834	113618	103417
rejected events	28168	29402	27991	29802	32077	47818		48%	47%	49%	48%	47%	22%
rejected %	13%	13%	13%	14%	13%	10%	grade 1 events	580	477	601	629	560	268
								0%	0%	0%	0%	0%	0%
							grade 2 events	32408	34306	29498	30157	36066	92359
								15%	15%	14%	14%	15%	19%
							grade 3 events	12089	12092	11695	11735	12562	41544
								5%	5%	5%	5%	5%	8%
							grade 4 events	12033	11932	11613	11825	12666	41139
								5%	5%	5%	5%	5%	8%
							grade 5 events	1943	1887	1779	1852	2178	8680
								0%	0%	0%	0%	0%	1%
							grade 6 events	27413	27794	25058	25066	33661	139556
								12%	12%	12%	11%	14%	30%
							grade 7 events	24721	25505	24431	26414	28031	36356
								11%	11%	11%	12%	11%	7%

## 2.2 Compared Parameters

Parameter	Planned	Actual
Instrument	ACIS	ACIS
Detector	ACIS-012367	ACIS-012367
Grating	NONE	NONE
Data mode	FAINT	FAINT
Observation mode	SECONDARY	SECONDARY
[deg] Pointing RA	0	285.7285214694651
[deg] Pointing Dec	0	-36.11693466491851
[deg] Pointing Roll	0.0	290.8823723337186
[mm] SIM focus pos	-0.782348	-0.6828225247311905
[mm] SIM defocus	0	0.8505141146731063
[mm] SIM translation stage pos	-233.592463	250.4635187648994
[mm] SIM translation stage offset	0	-0.007540371344731511
[s] Observation start time (MET)	146015473.704163	146015472.67944
Observation start date	2002-08-17T23:51:14	2002-08-17T23:51:12
[s] Observation end time (MET)	146037833.055085	146037832.03036
Observation end date	2002-08-18T06:03:53	2002-08-18T06:03:52
Read mode	TIMED	TIMED

Parameter	Planned	Actual
Obspar format version number	7	7
Obspar file type	PREDICTED	ACTUAL
Obspar update status	NONE	UPDATED
On-chip summing requested	N	N
Subarray requested	NONE	NONE
Alternating exposures requested	N	N
[s] Primary exposure time	3.2	3.2

## **2.3 Star Slots**

## **2.4 FID Slots**

## **A Summary**

### **A.1 Status**

V&V Scientist	Jen Lauer
V&V Date (YYYY-MM-DD)	2012.10.23
V&V Edition	1
V&V Disposition and Status	OK
V&V Charge Time	8.4063999686837

### **A.2 Comments**