

# V&V Reference Report

## L2 ASCDS Version : 8.4.5

Observation 60900 - L2 Version 3  
Chandra X-Ray Center

L2 Processing Date : Oct 20 2012

## Contents

<b>1</b>	<b>Front</b>	<b>2</b>
<b>2</b>	<b>OBI</b>	<b>3</b>
2.1	OBI . . . . .	3
2.1.1	Images . . . . .	3
2.1.2	Bias . . . . .	3
2.1.3	Parameters . . . . .	4
2.1.4	Events . . . . .	4
2.2	Compared Parameters . . . . .	5
2.3	Star Slots . . . . .	6
2.4	FID Slots . . . . .	6
<b>A</b>	<b>Summary</b>	<b>7</b>
A.1	Status . . . . .	7
A.2	Comments . . . . .	7

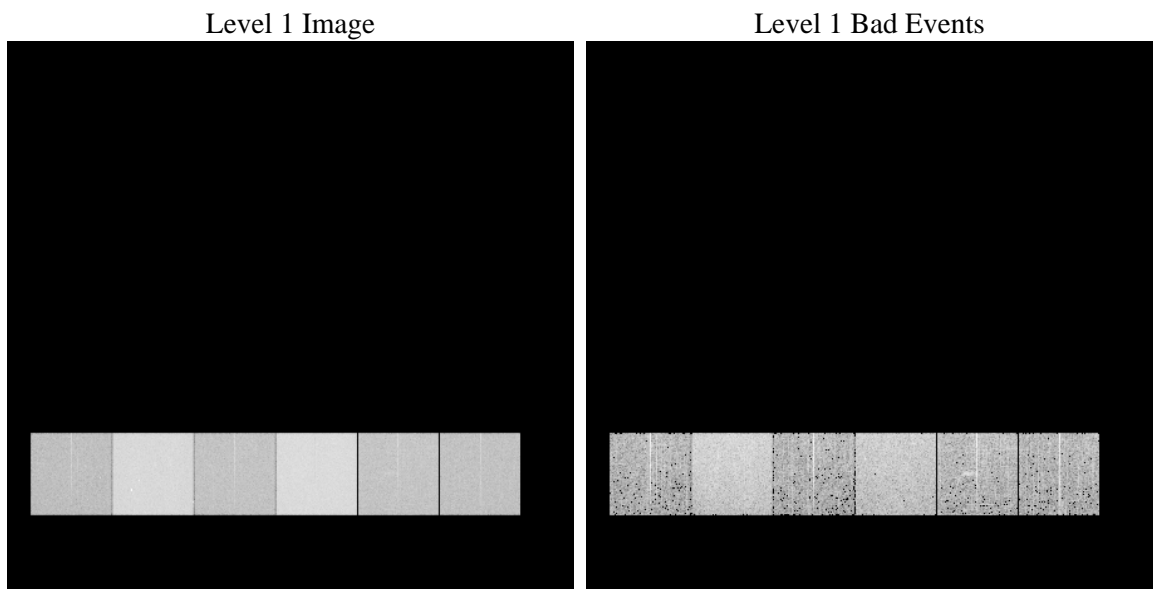
# 1 Front

seq_num	&#160	Sequence number
obs_id	60900	Observation id
title	ACIS-456789 diagnostics	Proposal title
observer	CHANDRA engineering request/realtime commanding	Principal investig
object	&#160	Source name
dtcycle	0	&#160
cycle	P	events from which exps? Prim/Second/Both
ra_targ	0.0	Observer's specified target RA [deg]
dec_targ	0.0	Observer's specified target Dec [deg]
ra_nom	115.79512237404	Nominal RA [deg]
dec_nom	18.028217516148	Nominal Dec [deg]
roll_nom	66.434830415435	Nominal Roll [deg]
revision	3	Processing version of data
ontime	7791.9999709725	Sum of GTIs [s]
livetime	7693.332975561	Livetime [s]
ontime4	2948.0604516864	Sum of GTIs [s]
ontime5	7791.9999709725	Sum of GTIs [s]
ontime6	3299.9929512441	Sum of GTIs [s]
ontime7	7791.9999709725	Sum of GTIs [s]
ontime8	3364.8132733405	Sum of GTIs [s]
ontime9	3187.7314684987	Sum of GTIs [s]
l2events	1186567	Number of level 2 events

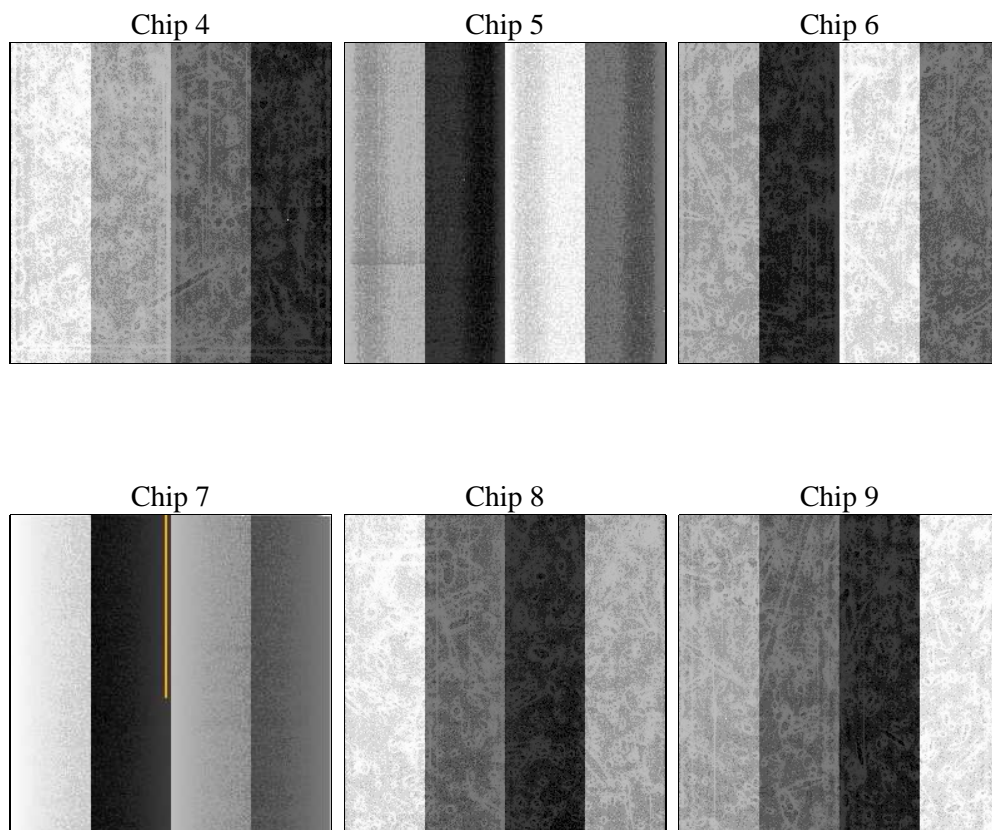
## 2 OBI

### 2.1 OBI

#### 2.1.1 Images



#### 2.1.2 Bias



### 2.1.3 Parameters

obi_num	1	Obi number	sched_exp_time	0.0	[s] Scheduled observation exposure time
ascdsver	8.4.5	Processing system revision	ontime	7791.9999709725	Sum of GTIs [s]
caldsver	4.5.2	&#160	ontime4	2948.0604516864	Sum of GTIs [s]
date	2012-10-20T13:31:28	Date and time of file creation	ontime5	7791.9999709725	Sum of GTIs [s]
revision	3	Processing version of data	ontime6	3299.9929512441	Sum of GTIs [s]
			ontime7	7791.9999709725	Sum of GTIs [s]
			ontime8	3364.8132733405	Sum of GTIs [s]
			ontime9	3187.7314684987	Sum of GTIs [s]
			l1events	1426260	Number of level 1 events

### 2.1.4 Events

	ccd 4	ccd 5	ccd 6	ccd 7	ccd 8	ccd 9		ccd 4	ccd 5	ccd 6	ccd 7	ccd 8	ccd 9
level 1 events	148166	363297	172908	397123	182006	162760	grade 0 events	72368	75626	81853	89740	85501	76964
rejected events	23673	50470	22821	40706	26836	23240		48%	20%	47%	22%	46%	47%
rejected %	15%	13%	13%	10%	14%	14%	grade 1 events	545	222	403	219	414	442
								0%	0%	0%	0%	0%	0%
							grade 2 events	20031	110407	26321	78758	26973	23757
								13%	30%	15%	19%	14%	14%
							grade 3 events	8271	20445	9243	36058	9900	8973
								5%	5%	5%	9%	5%	5%
							grade 4 events	8161	20126	9076	35674	10010	8920
								5%	5%	5%	8%	5%	5%
							grade 5 events	1462	8963	1688	8092	1907	1675
								0%	2%	0%	2%	1%	1%
							grade 6 events	15662	86223	23594	116187	22786	20906
								10%	23%	13%	29%	12%	12%
							grade 7 events	21666	41285	20730	32395	24515	21123
								14%	11%	11%	8%	13%	12%

## 2.2 Compared Parameters

Parameter	Planned	Actual
Instrument	ACIS	ACIS
Detector	ACIS-456789	ACIS-456789
Grating	NONE	NONE
Data mode	FAINT	FAINT
Observation mode	SECONDARY	SECONDARY
[deg] Pointing RA	0	115.7951223740421
[deg] Pointing Dec	0	18.0282175161481
[deg] Pointing Roll	0.0	66.43483041543506
[mm] SIM focus pos	-0.684267	-0.6828225247311905
[mm] SIM defocus	0	0.8505141146731063
[mm] SIM translation stage pos	-190.132523	250.466033080201
[mm] SIM translation stage offset	0	-0.01005468664627074
[s] Observation start time (MET)	157864697.64611	157864696.62139
Observation start date	2003-01-02T03:18:18	2003-01-02T03:18:16
[s] Observation end time (MET)	157877866.846661	157877865.82194
Observation end date	2003-01-02T06:57:47	2003-01-02T06:57:45
Read mode	TIMED	TIMED

Parameter	Planned	Actual
Obspar format version number	7	7
Obspar file type	PREDICTED	ACTUAL
Obspar update status	NONE	UPDATED
On-chip summing requested	N	N
Subarray requested	NONE	NONE
Alternating exposures requested	N	N
[s] Primary exposure time	0.000000	3.2

## **2.3 Star Slots**

## **2.4 FID Slots**

## A Summary

### A.1 Status

V&V Scientist	Beth Sundheim
V&V Date (YYYY-MM-DD)	2012.11.26
V&V Edition	1
V&V Disposition and Status	OK
V&V Charge Time	7.7919999709725

### A.2 Comments