

V&V Reference Report

L2 ASCDS Version : 7.6.9

Observation 60900 - L2 Version 001
Chandra X-Ray Center

L2 Processing Date : Oct 18 2006

Contents

1	Front	2
2	OBI	3
2.1	OBI	3
2.1.1	Images	3
2.1.2	Bias	3
2.1.3	Parameters	4
2.1.4	Events	4
2.2	Compared Parameters	5
2.3	Aspect	6
2.4	Star Slots	8
2.5	FID Slots	8
A	Summary	9
A.1	Status	9
A.2	Comments	9

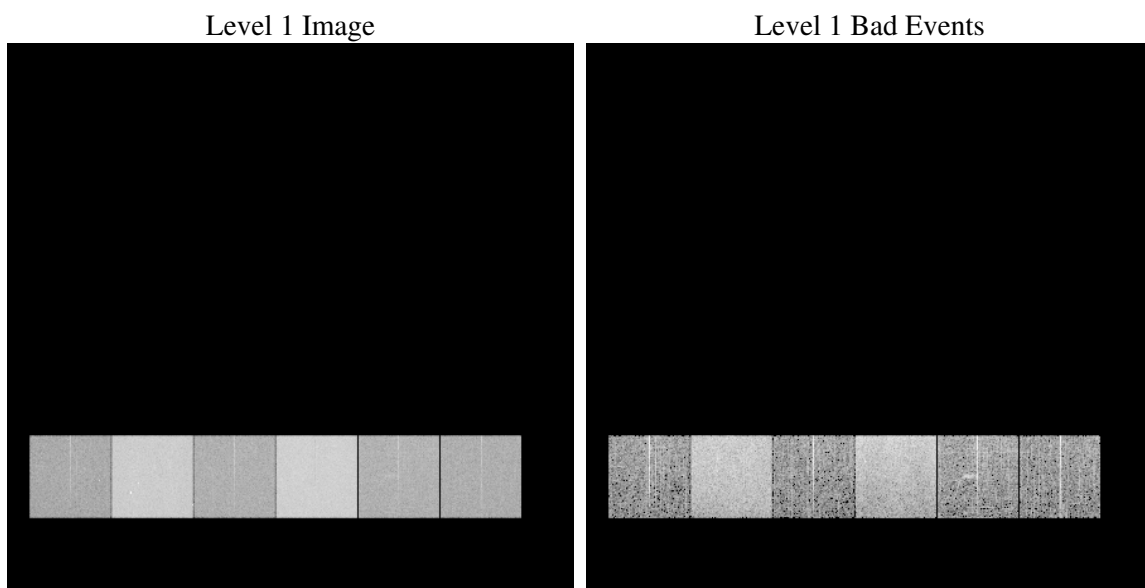
1 Front

seq_num	
obs_id	60900
title	ACIS-456789 diagnostics
observer	CHANDRA engineering request/realtime commanding
object	
dtcycle	0
cycle	P
ra_targ	0.0
dec_targ	0.0
ra_nom	115.79512237404
dec_nom	18.028217516148
roll_nom	66.434830415435
revision	2
ontime	7791.6159579754
livetime	7692.9538251676
ontime4	2946.4604516923
ontime5	7791.6569979787
ontime6	3299.6910182536
ontime7	7791.6159579754
ontime8	3364.5934203267
ontime9	3186.1314685047
l2events	1165313

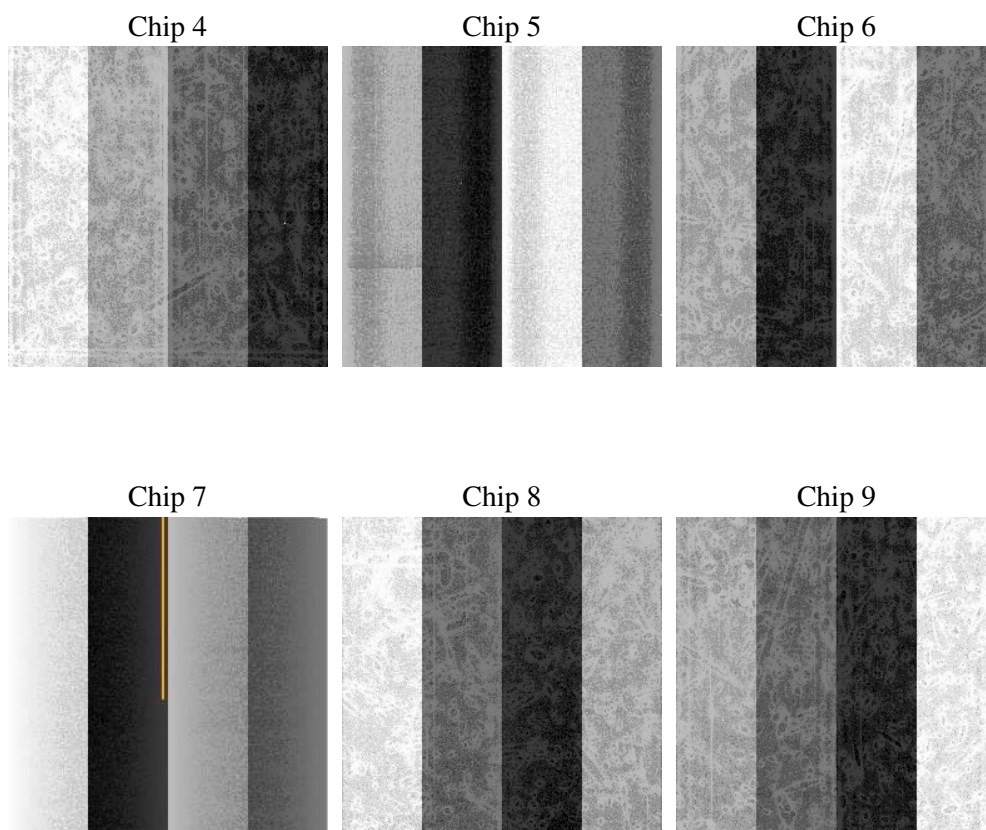
2 OBI

2.1 OBI

2.1.1 Images



2.1.2 Bias



2.1.3 Parameters

obi_num	1
ascdsver	7.6.9
caldsver	3.2.3
date	2006-10-19T01:12:27
revision	2

sched_exp_time	0.0
ontime	7794.6211255789
ontime4	2949.3424992859
ontime5	7794.6211255789
ontime6	3302.6141058505
ontime7	7794.6211255789
ontime8	3367.4344279468
ontime9	3189.1776761115
l1events	1426260

2.1.4 Events

	ccd 4	ccd 5	ccd 6	ccd 7	ccd 8	ccd 9
level 1 events	148166	363297	172908	397123	182006	162760
rejected events	23819	59104	22984	53212	26998	23375
rejected %	16%	16%	13%	13%	14%	14%

	ccd 4	ccd 5	ccd 6	ccd 7	ccd 8	ccd 9
grade 0 events	72365	38089	81847	63126	85498	76960
	48%	10%	47%	15%	46%	47%
grade 1 events	545	112	403	145	414	442
	0%	0%	0%	0%	0%	0%
grade 2 events	20034	144128	26327	103302	26976	23761
	13%	39%	15%	26%	14%	14%
grade 3 events	8270	10933	9243	25849	9895	8973
	5%	3%	5%	6%	5%	5%
grade 4 events	8161	10546	9076	25471	10010	8917
	5%	2%	5%	6%	5%	5%
grade 5 events	1462	6491	1688	7093	1907	1674
	0%	1%	0%	1%	1%	1%
grade 6 events	15662	100622	23594	126285	22791	20910
	10%	27%	13%	31%	12%	12%
grade 7 events	21667	52376	20730	45852	24515	21123
	14%	14%	11%	11%	13%	12%

2.2 Compared Parameters

Parameter	Planned	Actual	Parameter	Planned	Actual
Instrument	ACIS	ACIS	Obspar format version number	6	6
Detector	ACIS-456789	ACIS-456789	Obspar file type	PREDICTED	ACTUAL
Grating	NONE	NONE	Obspar update status	NONE	UPDATED
Data mode	FAINT	FAINT	On-chip summing requested	N	N
Observation mode	SECONDARY	SECONDARY	Subarray requested	NONE	NONE
Pointing RA	0	115.7951223740421	Alternating exposures requested	N	N
Pointing Dec	0	18.02821751614809	Primary exposure time	0.000000	3.2
Pointing Roll	0.0	66.43483041543504			
SIM focus pos (mm)	-0.684267	-0.6828225247311905			
SIM defocus (mm)	0	0.8505141146731063			
SIM translation stage pos (mm)	-190.132523	250.466033080201			
SIM translation stage offset (mm)	0	-0.01005468664627074			
Observation start time	157864697.64611	157864696.62139			
Observation start date	2003-01-02T03:18:18	2003-01-02T03:18:16			
Observation end time	157877866.846661	157877865.82194			
Observation end date	2003-01-02T06:57:47	2003-01-02T06:57:45			
Read mode	TIMED	TIMED			

2.3 Aspect

2.4 Star Slots

2.5 FID Slots

A Summary

A.1 Status

V&V Scientist	Jen Lauer
V&V Date (YYYY-MM-DD)	2006.10.19
V&V Edition	1
V&V Disposition and Status	OK
V&V Charge Time	7.79161595

A.2 Comments