

# V&V Reference Report

## L2 ASCDS Version : 7.6.8

Observation 60790 - L2 Version 001  
Chandra X-Ray Center

L2 Processing Date : Jul 30 2006

## Contents

<b>1</b>	<b>Front</b>	<b>2</b>
<b>2</b>	<b>OBI</b>	<b>3</b>
2.1	OBI . . . . .	3
2.1.1	Images . . . . .	3
2.1.2	Bias . . . . .	3
2.1.3	Parameters . . . . .	4
2.1.4	Events . . . . .	4
2.2	Compared Parameters . . . . .	5
2.3	Aspect . . . . .	6
2.4	Star Slots . . . . .	8
2.5	FID Slots . . . . .	8
<b>A</b>	<b>Summary</b>	<b>9</b>
A.1	Status . . . . .	9
A.2	Comments . . . . .	9

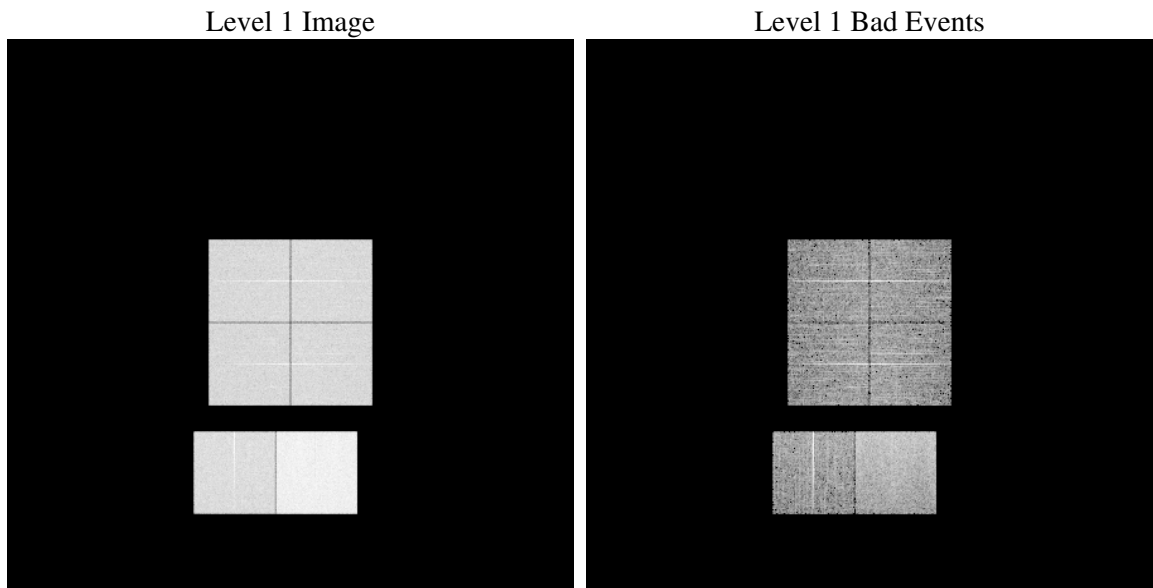
# 1 Front

seq_num	&#160
obs_id	60790
title	ACIS-012367 diagnostics
observer	CHANDRA engineering request/realtime commanding
object	&#160
dtcycle	0
cycle	P
ra_targ	0.0
dec_targ	0.0
ra_nom	326.0018992433
dec_nom	52.028566902959
roll_nom	54.767975630946
revision	2
ontime	8438.3999685645
livetime	8331.5478671681
ontime0	4732.5352760553
ontime1	4844.1700994372
ontime2	4523.312990129
ontime3	4662.6757975221
ontime6	5038.6294206977
ontime7	8438.3999685645
l2events	1260860

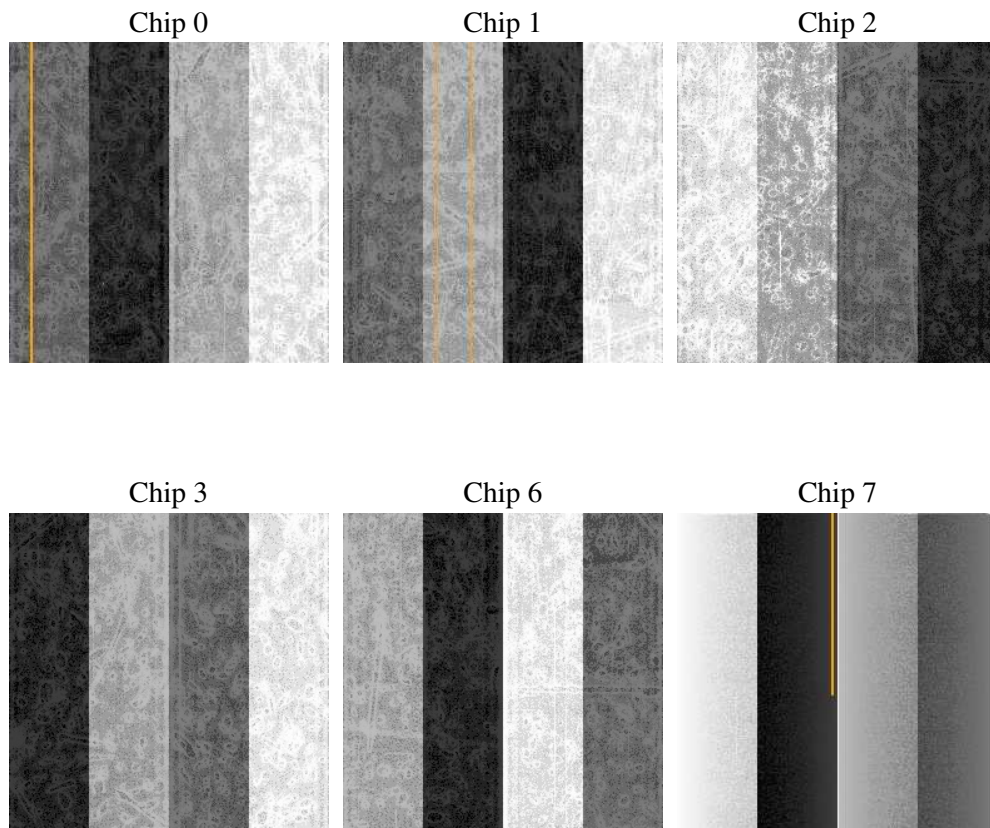
## 2 OBI

### 2.1 OBI

#### 2.1.1 Images



#### 2.1.2 Bias



### 2.1.3 Parameters

obi_num	1
ascdsver	7.6.8
caldbver	3.2.2
date	2006-07-30T11:42:14
revision	2

sched_exp_time	0.0
ontime	8465.4864869714
ontime0	4751.3415576816
ontime1	4858.2927469015
ontime2	4537.4356076717
ontime3	4680.0394351482
ontime6	5055.9930284023
ontime7	8465.4864869714
l1events	1544373

### 2.1.4 Events

	ccd 0	ccd 1	ccd 2	ccd 3	ccd 6	ccd 7
level 1 events	222048	227128	217291	223811	248439	405656
rejected events	31412	32353	32191	34167	36001	59397
rejected %	14%	14%	14%	15%	14%	14%

	ccd 0	ccd 1	ccd 2	ccd 3	ccd 6	ccd 7
grade 0 events	105465	107630	104071	107108	115773	62035
	47%	47%	47%	47%	46%	15%
grade 1 events	583	525	647	616	590	159
	0%	0%	0%	0%	0%	0%
grade 2 events	33318	34325	31375	32541	36707	104918
	15%	15%	14%	14%	14%	25%
grade 3 events	12429	12089	12159	12207	13313	25442
	5%	5%	5%	5%	5%	6%
grade 4 events	12352	12543	12136	12494	13357	25324
	5%	5%	5%	5%	5%	6%
grade 5 events	2111	2186	1991	2279	2382	7576
	0%	0%	0%	1%	0%	1%
grade 6 events	27891	28856	26006	26106	34089	129795
	12%	12%	11%	11%	13%	31%
grade 7 events	27899	28974	28906	30460	32228	50407
	12%	12%	13%	13%	12%	12%

## 2.2 Compared Parameters

Parameter	Planned	Actual	Parameter	Planned	Actual
Instrument	ACIS	ACIS	Obspar format version number	6	6
Detector	ACIS-012367	ACIS-012367	Obspar file type	PREDICTED	ACTUAL
Grating	NONE	NONE	Obspar update status	NONE	UPDATED
Data mode	FAINT	FAINT	On-chip summing requested	N	N
Observation mode	SECONDARY	SECONDARY	Subarray requested	NONE	NONE
Pointing RA	0	326.0018992432971	Alternating exposures requested	N	N
Pointing Dec	0	52.02856690295928	Primary exposure time	0.000000	3.2
Pointing Roll	0.0	54.76797563094643			
SIM focus pos (mm)	-0.782348	-0.7809083437167272			
SIM defocus (mm)	0	0.7524282956875696			
SIM translation stage pos (mm)	-233.592463	250.466033080201			
SIM translation stage offset (mm)	0	-0.01005468664627074			
Observation start time	165665829.473764	165665828.44905			
Observation start date	2003-04-02T10:17:09	2003-04-02T10:17:08			
Observation end time	165687807.524691	165687806.49997			
Observation end date	2003-04-02T16:23:28	2003-04-02T16:23:26			
Read mode	TIMED	TIMED			

## 2.3 Aspect



## **2.4 Star Slots**

## **2.5 FID Slots**



## A Summary

### A.1 Status

V&V Scientist	Jen Lauer
V&V Date (YYYY-MM-DD)	2006.07.30
V&V Edition	1
V&V Disposition and Status	OK
V&V Charge Time	8.43839996

### A.2 Comments