

V&V Reference Report

L2 ASCDS Version : 8.4.5

Observation 60730 - L2 Version 3
Chandra X-Ray Center

L2 Processing Date : Oct 28 2012

Contents

1	Front	2
2	OBI	3
2.1	OBI	3
2.1.1	Images	3
2.1.2	Bias	3
2.1.3	Parameters	4
2.1.4	Events	4
2.2	Compared Parameters	5
2.3	Star Slots	6
2.4	FID Slots	6
A	Summary	7
A.1	Status	7
A.2	Comments	7

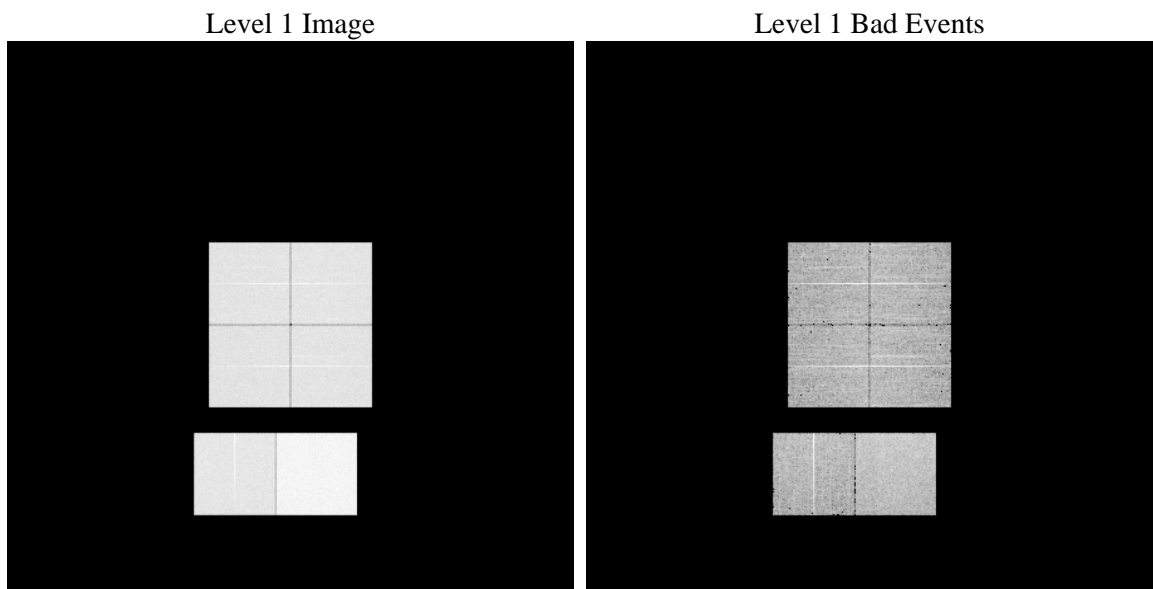
1 Front

seq_num	 	Sequence number
obs_id	60730	Observation id
title	ACIS-012367 diagnostics	Proposal title
observer	CHANDRA engineering request/realtime commanding	Principal investig
object	 	Source name
dtcycle	0	
cycle	P	events from which exps? Prim/Second/Both
ra_targ	0.0	Observer's specified target RA [deg]
dec_targ	0.0	Observer's specified target Dec [deg]
ra_nom	296.98159127552	Nominal RA [deg]
dec_nom	-35.975593621566	Nominal Dec [deg]
roll_nom	88.499413952171	Nominal Roll [deg]
revision	3	Processing version of data
ontime	11397.109381199	Sum of GTIs [s]
livetime	11252.792319699	Livetime [s]
ontime0	6459.3634759784	Sum of GTIs [s]
ontime1	6585.7619546652	Sum of GTIs [s]
ontime2	6086.6497641504	Sum of GTIs [s]
ontime3	6264.9048326313	Sum of GTIs [s]
ontime6	6697.5357983112	Sum of GTIs [s]
ontime7	11397.109381199	Sum of GTIs [s]
l2events	1704104	Number of level 2 events

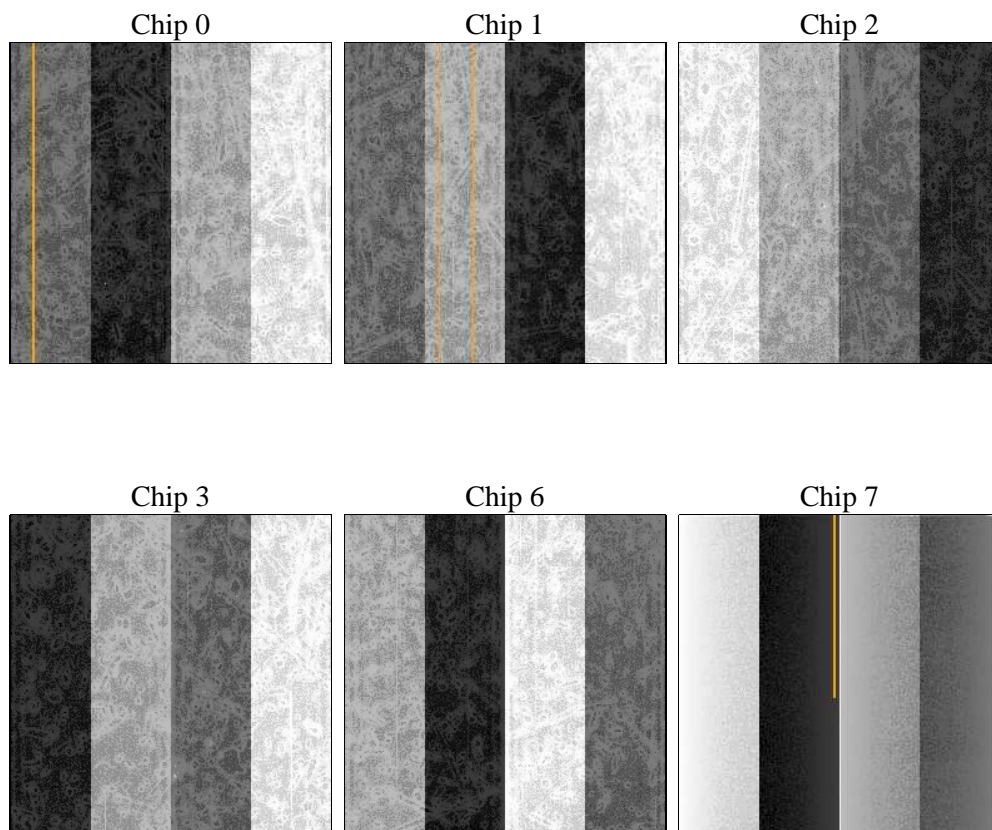
2 OBI

2.1 OBI

2.1.1 Images



2.1.2 Bias



2.1.3 Parameters

obi_num	0	Obi number	sched_exp_time	0.0	[s] Scheduled observation exposure time
ascdsver	8.4.5	Processing system revision	ontime	11397.109381199	Sum of GTIs [s]
caldbver	4.5.2	 	ontime0	6459.3634759784	Sum of GTIs [s]
date	2012-10-28T13:16:53	Date and time of file creation	ontime1	6585.7619546652	Sum of GTIs [s]
revision	3	Processing version of data	ontime2	6086.6497641504	Sum of GTIs [s]
			ontime3	6264.9048326313	Sum of GTIs [s]
			ontime6	6697.5357983112	Sum of GTIs [s]
			ontime7	11397.109381199	Sum of GTIs [s]
			l1events	2068182	Number of level 1 events

2.1.4 Events

	ccd 0	ccd 1	ccd 2	ccd 3	ccd 6	ccd 7		ccd 0	ccd 1	ccd 2	ccd 3	ccd 6	ccd 7
level 1 events	299999	308539	289476	299260	327659	543249	grade 0 events	141760	144551	137504	141837	151708	120490
rejected events	42914	45183	43706	45597	47380	61285		47%	46%	47%	47%	46%	22%
rejected %	14%	14%	15%	15%	14%	11%	grade 1 events	766	695	879	800	743	366
								0%	0%	0%	0%	0%	0%
							grade 2 events	44787	46847	41647	43400	48678	106139
								14%	15%	14%	14%	14%	19%
							grade 3 events	16539	16593	16022	16616	17477	48431
								5%	5%	5%	5%	5%	8%
							grade 4 events	16351	16764	16006	16492	17540	47829
								5%	5%	5%	5%	5%	8%
							grade 5 events	2981	3116	2685	3062	3423	11488
								0%	1%	0%	1%	1%	2%
							grade 6 events	37675	38601	34626	35318	45021	159075
								12%	12%	11%	11%	13%	29%
							grade 7 events	39140	41372	40107	41735	43069	49431
								13%	13%	13%	13%	13%	9%

2.2 Compared Parameters

Parameter	Planned	Actual	Parameter	Planned	Actual
Instrument	ACIS	ACIS	Obspar format version number	7	7
Detector	ACIS-012367	ACIS-012367	Obspar file type	PREDICTED	ACTUAL
Grating	NONE	NONE	Obspar update status	NONE	UPDATED
Data mode	FAINT	FAINT	On-chip summing requested	N	N
Observation mode	SECONDARY	SECONDARY	Subarray requested	NONE	NONE
[deg] Pointing RA	0	296.9815912755194	Alternating exposures requested	N	N
[deg] Pointing Dec	0	-35.97559362156586	[s] Primary exposure time	0.000000	3.2
[deg] Pointing Roll	0.0	88.49941395217115			
[mm] SIM focus pos	-0.782348	-0.7809083437167272			
[mm] SIM defocus	0	0.7524282956875696			
[mm] SIM translation stage pos	-233.592463	250.466033080201			
[mm] SIM translation stage offset	0	-0.01005468664627074			
[s] Observation start time (MET)	170182032.964738	170182031.94002			
Observation start date	2003-05-24T16:47:13	2003-05-24T16:47:11			
[s] Observation end time (MET)	170233793.416935	170233792.39221			
Observation end date	2003-05-25T07:09:53	2003-05-25T07:09:52			
Read mode	TIMED	TIMED			

2.3 Star Slots

2.4 FID Slots

A Summary

A.1 Status

V&V Scientist	Jen Lauer
V&V Date (YYYY-MM-DD)	2012.12.06
V&V Edition	1
V&V Disposition and Status	OK
V&V Charge Time	11.397109381199

A.2 Comments