

V&V Reference Report

L2 ASCDS Version : 8.4.5

Observation 60580 - L2 Version 3
Chandra X-Ray Center

L2 Processing Date : Nov 2 2012

Contents

1	Front	2
2	OBI	3
2.1	OBI	3
2.1.1	Images	3
2.1.2	Bias	3
2.1.3	Parameters	4
2.1.4	Events	4
2.2	Compared Parameters	5
2.3	Star Slots	6
2.4	FID Slots	6
A	Summary	7
A.1	Status	7
A.2	Comments	7

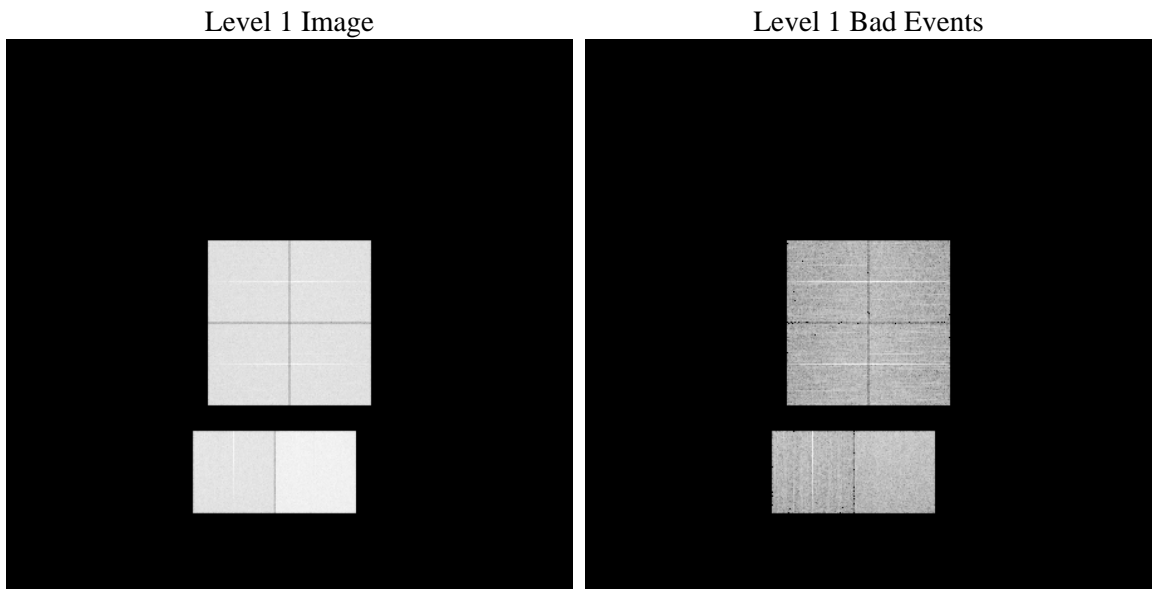
1 Front

seq_num	 	Sequence number
obs_id	60580	Observation id
title	ACIS-012367 diagnostics	Proposal title
observer	CHANDRA engineering request/realtime commanding	Principal investig
object	 	Source name
dtcycle	0	
cycle	P	events from which exps? Prim/Second/Both
ra_targ	0.0	Observer's specified target RA [deg]
dec_targ	0.0	Observer's specified target Dec [deg]
ra_nom	214.06192358343	Nominal RA [deg]
dec_nom	67.983244585864	Nominal Dec [deg]
roll_nom	291.30649448438	Nominal Roll [deg]
revision	3	Processing version of data
ontime	12201.599954545	Sum of GTIs [s]
livetime	12047.095949	Livetime [s]
ontime0	7200.7888521254	Sum of GTIs [s]
ontime1	7466.5485619903	Sum of GTIs [s]
ontime2	6993.1898530722	Sum of GTIs [s]
ontime3	7100.3176386952	Sum of GTIs [s]
ontime6	7612.3917649984	Sum of GTIs [s]
ontime7	12201.599954545	Sum of GTIs [s]
l2events	1812457	Number of level 2 events

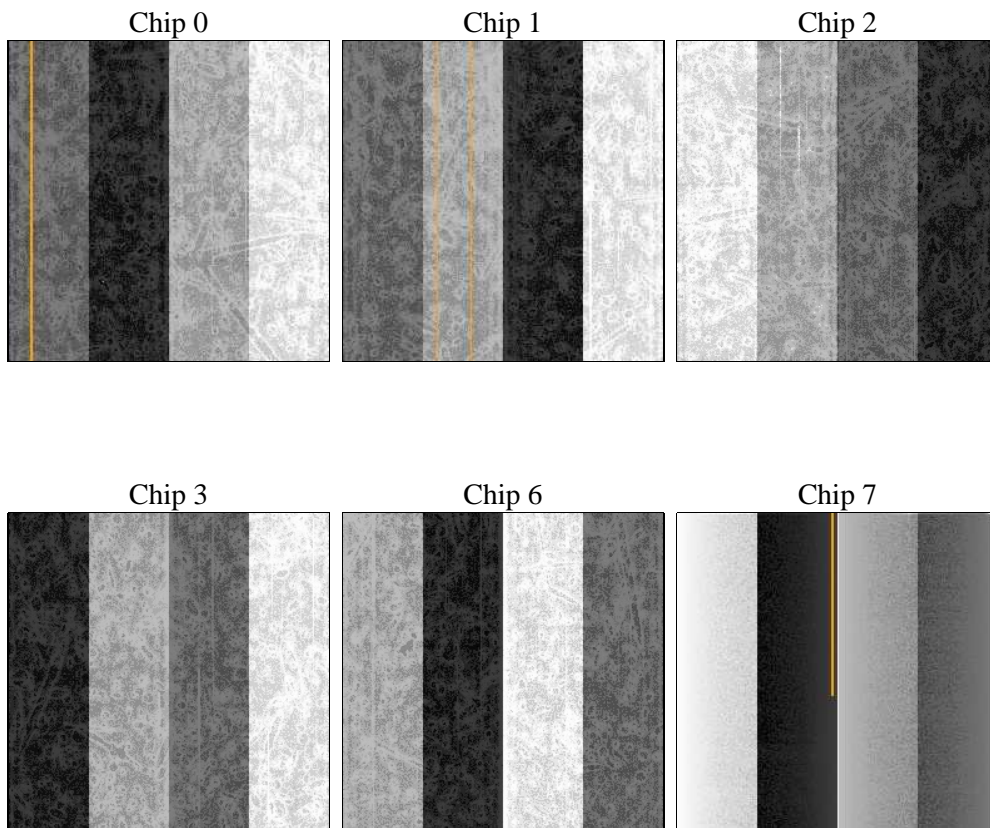
2 OBI

2.1 OBI

2.1.1 Images



2.1.2 Bias



2.1.3 Parameters

obi_num	0	Obi number	sched_exp_time	0.0	[s] Scheduled observation exposure time
ascdsver	8.4.5	Processing system revision	ontime	12201.599954545	Sum of GTIs [s]
caldbver	4.5.2	 	ontime0	7200.7888521254	Sum of GTIs [s]
date	2012-11-02T17:30:27	Date and time of file creation	ontime1	7466.5485619903	Sum of GTIs [s]
revision	3	Processing version of data	ontime2	6993.1898530722	Sum of GTIs [s]
			ontime3	7100.3176386952	Sum of GTIs [s]
			ontime6	7612.3917649984	Sum of GTIs [s]
			ontime7	12201.599954545	Sum of GTIs [s]
			l1events	2209639	Number of level 1 events

2.1.4 Events

	ccd 0	ccd 1	ccd 2	ccd 3	ccd 6	ccd 7		ccd 0	ccd 1	ccd 2	ccd 3	ccd 6	ccd 7
level 1 events	320009	332659	316950	325932	357021	557068	grade 0 events	150719	155727	150471	153038	165056	123477
rejected events	46272	47949	48566	52820	52723	64651		47%	46%	47%	46%	46%	22%
rejected %	14%	14%	15%	16%	14%	11%	grade 1 events	849	779	906	878	785	305
								0%	0%	0%	0%	0%	0%
							grade 2 events	47339	50475	45201	46590	52425	107375
								14%	15%	14%	14%	14%	19%
							grade 3 events	17646	18291	17461	17525	18899	49246
								5%	5%	5%	5%	5%	8%
							grade 4 events	17576	18070	17408	17918	18913	49037
								5%	5%	5%	5%	5%	8%
							grade 5 events	3114	3318	2988	3358	3647	12361
								0%	0%	0%	1%	1%	2%
							grade 6 events	40576	42286	37843	38158	49128	163412
								12%	12%	11%	11%	13%	29%
							grade 7 events	42190	43713	44672	48467	48168	51855
								13%	13%	14%	14%	13%	9%

2.2 Compared Parameters

Parameter	Planned	Actual
Instrument	ACIS	ACIS
Detector	ACIS-012367	ACIS-012367
Grating	NONE	NONE
Data mode	FAINT	FAINT
Observation mode	SECONDARY	SECONDARY
[deg] Pointing RA	0	214.0619235834287
[deg] Pointing Dec	0	67.98324458586384
[deg] Pointing Roll	0.0	291.3064944843794
[mm] SIM focus pos	-0.782348	-0.7809083437167272
[mm] SIM defocus	0	0.7524282956875696
[mm] SIM translation stage pos	-233.592463	250.466033080201
[mm] SIM translation stage offset	0	-0.01005468664627074
[s] Observation start time (MET)	177958618.095851	177958617.07113
Observation start date	2003-08-22T16:56:58	2003-08-22T16:56:57
[s] Observation end time (MET)	177981118.896814	177981117.87209
Observation end date	2003-08-22T23:11:59	2003-08-22T23:11:57
Read mode	TIMED	TIMED

Parameter	Planned	Actual
Obspar format version number	7	7
Obspar file type	PREDICTED	ACTUAL
Obspar update status	NONE	UPDATED
On-chip summing requested	N	N
Subarray requested	NONE	NONE
Alternating exposures requested	N	N
[s] Primary exposure time	0.000000	3.2

2.3 Star Slots

2.4 FID Slots

A Summary

A.1 Status

V&V Scientist	Jen Lauer
V&V Date (YYYY-MM-DD)	2012.12.06
V&V Edition	1
V&V Disposition and Status	OK
V&V Charge Time	12.201599954545

A.2 Comments