

V&V Reference Report

L2 ASCDS Version : 8.4.5

Observation 60550 - L2 Version 3
Chandra X-Ray Center

L2 Processing Date : Nov 4 2012

Contents

1	Front	2
2	OBI	3
2.1	OBI	3
2.1.1	Images	3
2.1.2	Bias	3
2.1.3	Parameters	4
2.1.4	Events	4
2.2	Compared Parameters	5
2.3	Star Slots	6
2.4	FID Slots	6
A	Summary	7
A.1	Status	7
A.2	Comments	7

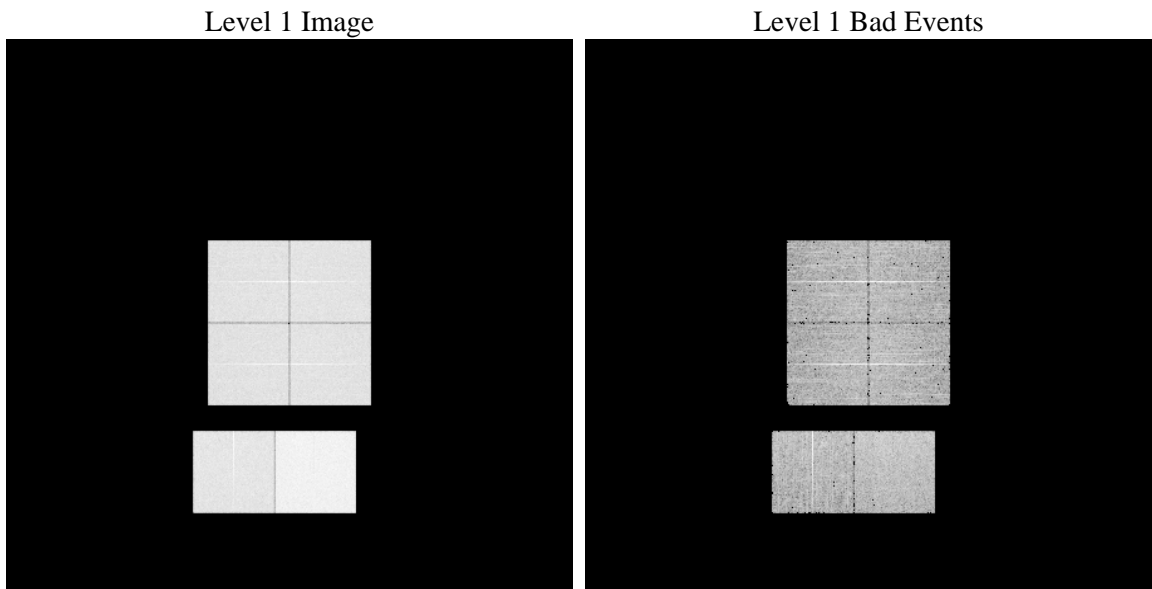
1 Front

seq_num	 	Sequence number
obs_id	60550	Observation id
title	ACIS-012367 diagnostics	Proposal title
observer	CHANDRA engineering request/realtime commanding	Principal investig
object	 	Source name
dtycle	0	
cycle	P	events from which exps? Prim/Second/Both
ra_targ	0.0	Observer's specified target RA [deg]
dec_targ	0.0	Observer's specified target Dec [deg]
ra_nom	327.00236481895	Nominal RA [deg]
dec_nom	14.971473628504	Nominal Dec [deg]
roll_nom	241.71086358701	Nominal Roll [deg]
revision	3	Processing version of data
ontime	8411.6974116266	Sum of GTIs [s]
livetime	8305.1834340845	Livetime [s]
ontime0	5118.8239074051	Sum of GTIs [s]
ontime1	5276.3838188946	Sum of GTIs [s]
ontime2	4985.8605231047	Sum of GTIs [s]
ontime3	5060.5683931708	Sum of GTIs [s]
ontime6	5413.6300606728	Sum of GTIs [s]
ontime7	8411.6974116266	Sum of GTIs [s]
l2events	1251166	Number of level 2 events

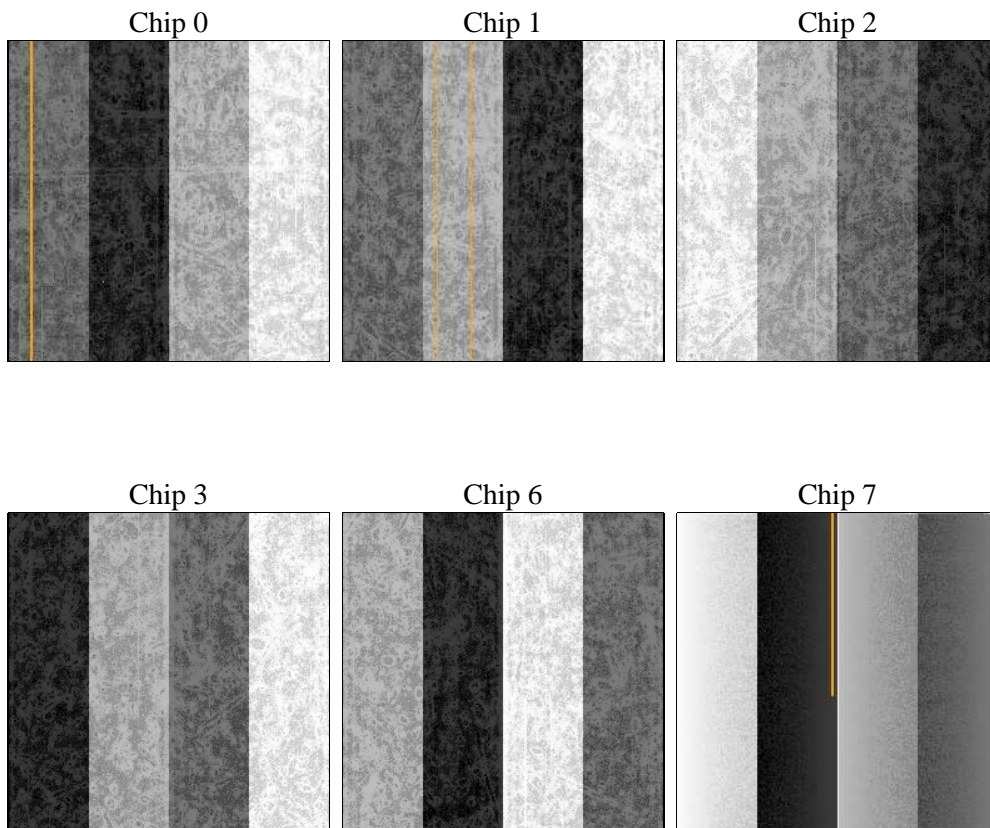
2 OBI

2.1 OBI

2.1.1 Images



2.1.2 Bias



2.1.3 Parameters

obi_num	0	Obi number	sched_exp_time	0.0	[s] Scheduled observation exposure time
ascdsver	8.4.5	Processing system revision	ontime	8411.6974116266	Sum of GTIs [s]
caldsver	4.5.2	 	ontime0	5118.8239074051	Sum of GTIs [s]
date	2012-11-04T12:01:59	Date and time of file creation	ontime1	5276.3838188946	Sum of GTIs [s]
revision	3	Processing version of data	ontime2	4985.8605231047	Sum of GTIs [s]
			ontime3	5060.5683931708	Sum of GTIs [s]
			ontime6	5413.6300606728	Sum of GTIs [s]
			ontime7	8411.6974116266	Sum of GTIs [s]
			l1events	1538676	Number of level 1 events

2.1.4 Events

	ccd 0	ccd 1	ccd 2	ccd 3	ccd 6	ccd 7		ccd 0	ccd 1	ccd 2	ccd 3	ccd 6	ccd 7
level 1 events	226064	232460	221696	228140	250491	379825	grade 0 events	105341	108225	105596	108109	115052	83047
rejected events	35773	35341	34588	36831	39330	47076		46%	46%	47%	47%	45%	21%
rejected %	15%	15%	15%	16%	15%	12%	grade 1 events	601	566	660	631	604	231
								0%	0%	0%	0%	0%	0%
							grade 2 events	33180	35505	31603	32560	36402	73096
								14%	15%	14%	14%	14%	19%
							grade 3 events	12319	12591	12307	12441	13115	33292
								5%	5%	5%	5%	5%	8%
							grade 4 events	12389	12408	12213	12469	13244	33178
								5%	5%	5%	5%	5%	8%
							grade 5 events	2314	2375	2189	2395	2670	8392
								1%	1%	0%	1%	1%	2%
							grade 6 events	28379	29474	26428	26831	34623	112032
								12%	12%	11%	11%	13%	29%
							grade 7 events	31541	31316	30700	32704	34781	36557
								13%	13%	13%	14%	13%	9%

2.2 Compared Parameters

Parameter	Planned	Actual	Parameter	Planned	Actual
Instrument	ACIS	ACIS	Obspar format version number	7	7
Detector	ACIS-012367	ACIS-012367	Obspar file type	PREDICTED	ACTUAL
Grating	NONE	NONE	Obspar update status	NONE	UPDATED
Data mode	FAINT	FAINT	On-chip summing requested	N	N
Observation mode	SECONDARY	SECONDARY	Subarray requested	NONE	NONE
[deg] Pointing RA	0	327.002364818947	Alternating exposures requested	N	N
[deg] Pointing Dec	0	14.97147362850408	[s] Primary exposure time	0.000000	3.2
[deg] Pointing Roll	0.0	241.7108635870107			
[mm] SIM focus pos	-0.782348	-0.7809083437167272			
[mm] SIM defocus	0	0.7524282956875696			
[mm] SIM translation stage pos	-233.592463	250.466033080201			
[mm] SIM translation stage offset	0	-0.01005468664627074			
[s] Observation start time (MET)	180283738.445427	180283737.42073			
Observation start date	2003-09-18T14:48:58	2003-09-18T14:48:57			
[s] Observation end time (MET)	180307430.296443	180307429.27174			
Observation end date	2003-09-18T21:23:50	2003-09-18T21:23:49			
Read mode	TIMED	TIMED			

2.3 Star Slots

2.4 FID Slots

A Summary

A.1 Status

V&V Scientist	Jen Lauer
V&V Date (YYYY-MM-DD)	2012.12.06
V&V Edition	1
V&V Disposition and Status	OK
V&V Charge Time	8.4116974116266

A.2 Comments