

V&V Reference Report

L2 ASCDS Version : 8.4.5

Observation 60470 - L2 Version 3
Chandra X-Ray Center

L2 Processing Date : Nov 8 2012

Contents

1	Front	2
2	OBI	3
2.1	OBI	3
2.1.1	Images	3
2.1.2	Bias	3
2.1.3	Parameters	4
2.1.4	Events	4
2.2	Compared Parameters	5
2.3	Star Slots	6
2.4	FID Slots	6
A	Summary	7
A.1	Status	7
A.2	Comments	7

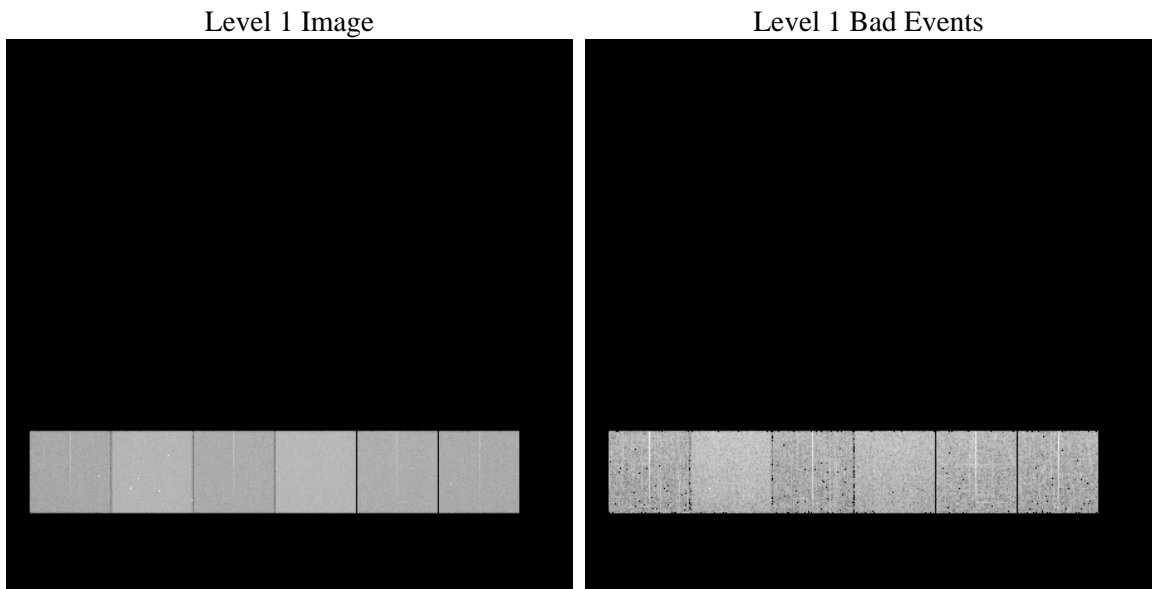
1 Front

seq_num	 	Sequence number
obs_id	60470	Observation id
title	ACIS-456789 diagnostics	Proposal title
observer	CHANDRA engineering request/realtime commanding	Principal investig
object	 	Source name
dtcycle	0	
cycle	P	events from which exps? Prim/Second/Both
ra_targ	0.0	Observer's specified target RA [deg]
dec_targ	0.0	Observer's specified target Dec [deg]
ra_nom	29.035375800731	Nominal RA [deg]
dec_nom	-36.00045390111	Nominal Dec [deg]
roll_nom	326.21088155489	Nominal Roll [deg]
revision	3	Processing version of data
ontime	8374.3999688029	Sum of GTIs [s]
livetime	8268.3582739397	Livetime [s]
ontime4	4971.2007663846	Sum of GTIs [s]
ontime5	8374.3999688029	Sum of GTIs [s]
ontime6	5382.7648129165	Sum of GTIs [s]
ontime7	8374.3999688029	Sum of GTIs [s]
ontime8	5577.3052395284	Sum of GTIs [s]
ontime9	5295.1342709661	Sum of GTIs [s]
l2events	1250367	Number of level 2 events

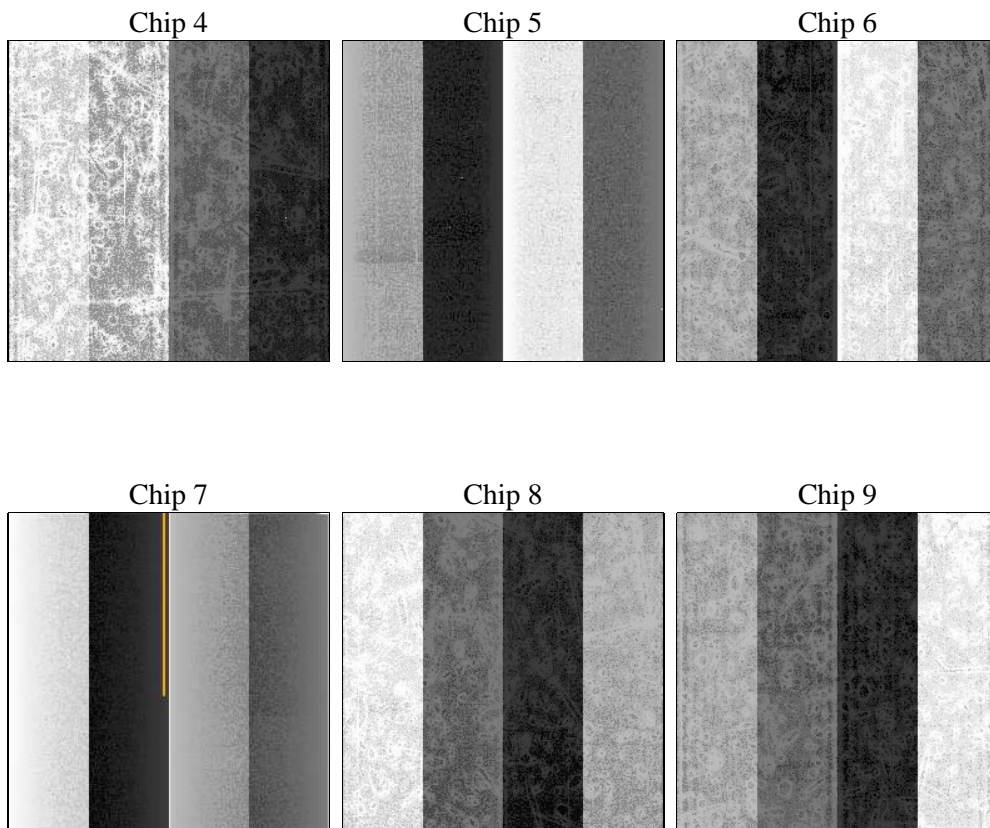
2 OBI

2.1 OBI

2.1.1 Images



2.1.2 Bias



2.1.3 Parameters

obi_num	1	Obi number	sched_exp_time	0.0	[s] Scheduled observation exposure time
ascdsver	8.4.5	Processing system revision	ontime	8374.3999688029	Sum of GTIs [s]
caldbver	4.5.2	 	ontime4	4971.2007663846	Sum of GTIs [s]
date	2012-11-08T11:02:31	Date and time of file creation	ontime5	8374.3999688029	Sum of GTIs [s]
revision	3	Processing version of data	ontime6	5382.7648129165	Sum of GTIs [s]
			ontime7	8374.3999688029	Sum of GTIs [s]
			ontime8	5577.3052395284	Sum of GTIs [s]
			ontime9	5295.1342709661	Sum of GTIs [s]
			l1events	1534934	Number of level 1 events

2.1.4 Events

	ccd 4	ccd 5	ccd 6	ccd 7	ccd 8	ccd 9		ccd 4	ccd 5	ccd 6	ccd 7	ccd 8	ccd 9
level 1 events	198011	315685	225454	341734	238623	215427	grade 0 events	98149	64368	107943	76129	112624	103144
rejected events	30829	48388	30680	40404	35077	30981		49%	20%	47%	22%	47%	47%
rejected %	15%	15%	13%	11%	14%	14%	grade 1 events	588	244	440	194	430	483
								0%	0%	0%	0%	0%	0%
							grade 2 events	27021	96790	34055	67586	36161	32006
								13%	30%	15%	19%	15%	14%
							grade 3 events	11130	16849	12204	30444	13196	11755
								5%	5%	5%	8%	5%	5%
							grade 4 events	11017	16654	12210	30074	13118	11736
								5%	5%	5%	8%	5%	5%
							grade 5 events	1929	7874	2084	6970	2517	2243
								0%	2%	0%	2%	1%	1%
							grade 6 events	21430	75469	30604	100454	30498	27444
								10%	23%	13%	29%	12%	12%
							grade 7 events	26747	37437	25914	29883	30079	26616
								13%	11%	11%	8%	12%	12%

2.2 Compared Parameters

Parameter	Planned	Actual	Parameter	Planned	Actual
Instrument	ACIS	ACIS	Obspar format version number	7	7
Detector	ACIS-456789	ACIS-456789	Obspar file type	PREDICTED	ACTUAL
Grating	NONE	NONE	Obspar update status	NONE	UPDATED
Data mode	FAINT	FAINT	On-chip summing requested	N	N
Observation mode	SECONDARY	SECONDARY	Subarray requested	NONE	NONE
[deg] Pointing RA	0	29.03537580073095	Alternating exposures requested	N	N
[deg] Pointing Dec	0	-36.00045390110991	[s] Primary exposure time	0.000000	3.2
[deg] Pointing Roll	0.0	326.2108815548918			
[mm] SIM focus pos	-0.684267	-0.6828225247311905			
[mm] SIM defocus	0	0.8505141146731063			
[mm] SIM translation stage pos	-190.132523	250.466033080201			
[mm] SIM translation stage offset	0	-0.01005468664627074			
[s] Observation start time (MET)	186224405.001526	186224403.97681			
Observation start date	2003-11-26T09:00:05	2003-11-26T09:00:03			
[s] Observation end time (MET)	186246873.0025	186246871.97779			
Observation end date	2003-11-26T15:14:33	2003-11-26T15:14:31			
Read mode	TIMED	TIMED			

2.3 Star Slots

2.4 FID Slots

A Summary

A.1 Status

V&V Scientist	Beth Sundheim
V&V Date (YYYY-MM-DD)	2012.12.11
V&V Edition	1
V&V Disposition and Status	OK
V&V Charge Time	8.3743999688029

A.2 Comments