

V&V Reference Report

L2 ASCDS Version : 7.6.7.2

Observation 60410 - L2 Version 001
Chandra X-Ray Center

L2 Processing Date : Jun 7 2006

Contents

1	Front	2
2	OBI	3
2.1	OBI	3
2.1.1	Images	3
2.1.2	Bias	3
2.1.3	Parameters	4
2.1.4	Events	4
2.2	Compared Parameters	5
2.3	Aspect	6
2.4	Star Slots	8
2.5	FID Slots	8
A	Summary	9
A.1	Status	9
A.2	Comments	9

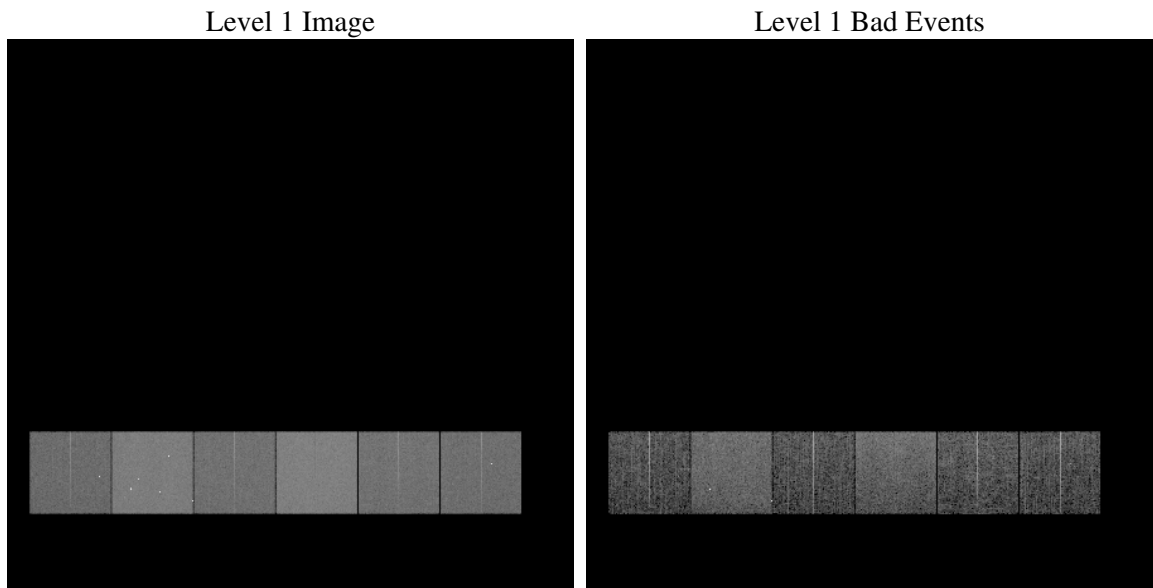
1 Front

seq_num	
obs_id	60410
title	ACIS-456789 diagnostics
observer	CHANDRA engineering request/realtime commanding
object	
dtcycle	0
cycle	P
ra_targ	0.0
dec_targ	0.0
ra_nom	127.95633652908
dec_nom	49.994630139843
roll_nom	157.93326084805
revision	2
ontime	7801.5999709368
livetime	7702.8114145452
ontime4	4606.7047996819
ontime5	7801.5999709368
ontime6	5043.5325161517
ontime7	7801.5999709368
ontime8	5114.8335841
ontime9	4875.0023509562
l2events	1111991

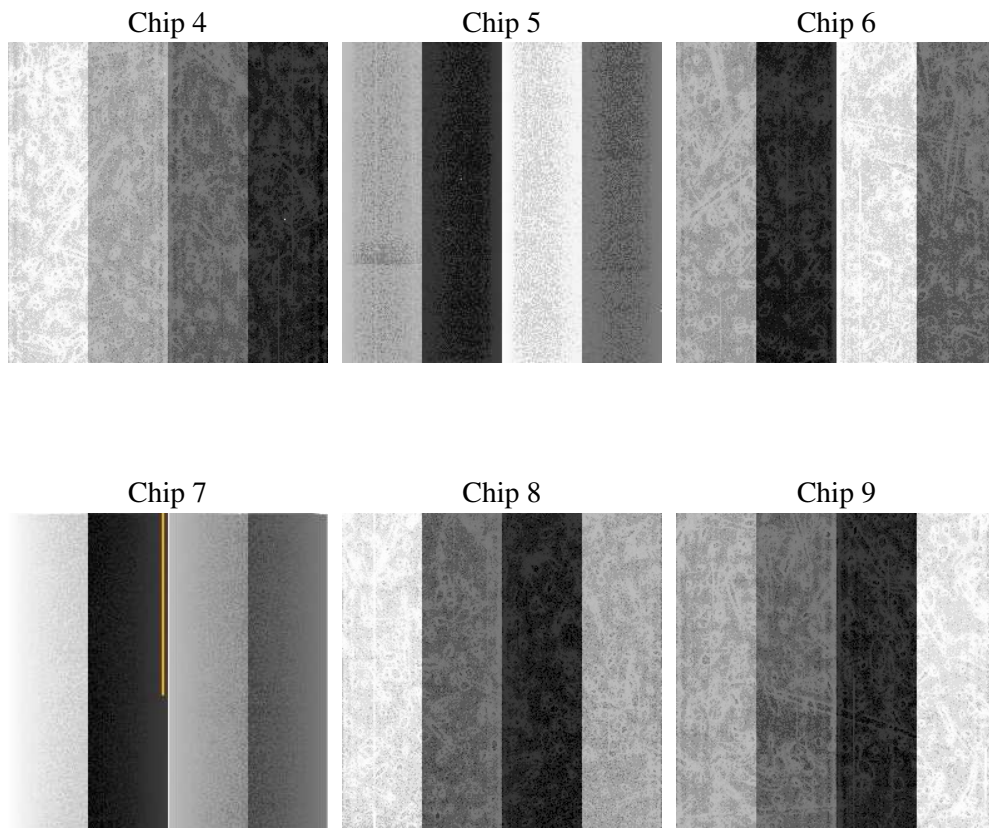
2 OBI

2.1 OBI

2.1.1 Images



2.1.2 Bias



2.1.3 Parameters

obi_num	1
ascdsver	7.6.7.2
caldbver	3.2.2
date	2006-06-07T08:23:30
revision	2

sched_exp_time	0.0
ontime	7804.3343099952
ontime4	4608.7338671982
ontime5	7804.3343099952
ontime6	5046.2668552101
ontime7	7804.3343099952
ontime8	5117.5679231584
ontime9	4877.7366900146
l1events	1417179

2.1.4 Events

	ccd 4	ccd 5	ccd 6	ccd 7	ccd 8	ccd 9
level 1 events	180997	298337	208783	315843	216717	196502
rejected events	30919	56643	32176	50685	35781	31490
rejected %	17%	18%	15%	16%	16%	16%

	ccd 4	ccd 5	ccd 6	ccd 7	ccd 8	ccd 9
grade 0 events	87884	30849	96327	46222	99237	90497
	48%	10%	46%	14%	45%	46%
grade 1 events	595	494	435	120	463	473
	0%	0%	0%	0%	0%	0%
grade 2 events	23410	113487	30528	80787	31726	29615
	12%	38%	14%	25%	14%	15%
grade 3 events	9988	7580	11106	19291	11718	10498
	5%	2%	5%	6%	5%	5%
grade 4 events	9853	7493	10960	18966	11644	10263
	5%	2%	5%	6%	5%	5%
grade 5 events	1889	6283	2304	6348	2537	2356
	1%	2%	1%	2%	1%	1%
grade 6 events	19075	82387	27809	100010	26715	24239
	10%	27%	13%	31%	12%	12%
grade 7 events	28303	49764	29314	44099	32677	28561
	15%	16%	14%	13%	15%	14%

2.2 Compared Parameters

Parameter	Planned	Actual	Parameter	Planned	Actual
Instrument	ACIS	ACIS	Obspar format version number	6	6
Detector	ACIS-456789	ACIS-456789	Obspar file type	PREDICTED	ACTUAL
Grating	NONE	NONE	Obspar update status	NONE	UPDATED
Data mode	FAINT	FAINT	On-chip summing requested	N	N
Observation mode	SECONDARY	SECONDARY	Subarray requested	NONE	NONE
Pointing RA	0	127.9563365290818	Alternating exposures requested	N	N
Pointing Dec	0	49.99463013984325	Primary exposure time	0.000000	3.2
Pointing Roll	0.0	157.9332608480527			
SIM focus pos (mm)	-0.684267	-0.7809083437167272			
SIM defocus (mm)	0	0.7524282956875696			
SIM translation stage pos (mm)	-190.132523	250.466033080201			
SIM translation stage offset (mm)	0	-0.01005468664627074			
Observation start time	190532143.988706	190532142.96399			
Observation start date	2004-01-15T05:35:44	2004-01-15T05:35:42			
Observation end time	190568617.590296	190568616.56558			
Observation end date	2004-01-15T15:43:38	2004-01-15T15:43:36			
Read mode	TIMED	TIMED			

2.3 Aspect

2.4 Star Slots

2.5 FID Slots

A Summary

A.1 Status

V&V Scientist	Jen Lauer
V&V Date (YYYY-MM-DD)	2006.06.07
V&V Edition	1
V&V Disposition and Status	OK
V&V Charge Time	7.80159997

A.2 Comments