

V&V Reference Report

L2 ASCDS Version : 7.6.7.2

Observation 60210 - L2 Version 001
Chandra X-Ray Center

L2 Processing Date : May 25 2006

Contents

1	Front	2
2	OBI	3
2.1	OBI	3
2.1.1	Images	3
2.1.2	Bias	3
2.1.3	Parameters	4
2.1.4	Events	4
2.2	Compared Parameters	5
2.3	Aspect	6
2.4	Star Slots	8
2.5	FID Slots	8
A	Summary	9
A.1	Status	9
A.2	Comments	9

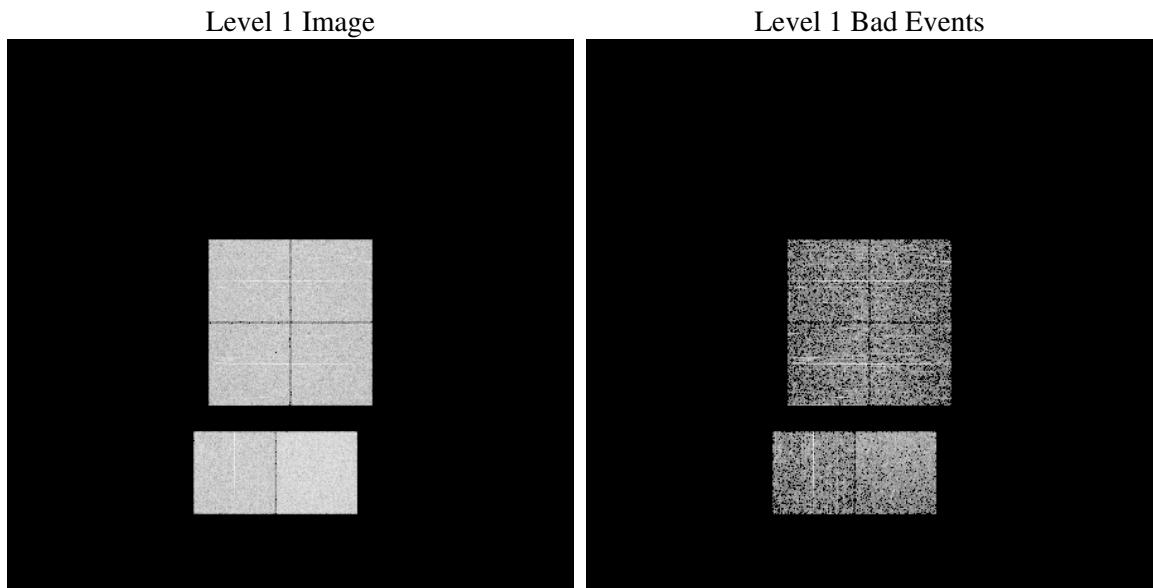
1 Front

seq_num	
obs_id	60210
title	ACIS-012367 diagnostics
observer	CHANDRA engineering request/realtime commanding
object	
dtcycle	0
cycle	P
ra_targ	0.0
dec_targ	0.0
ra_nom	303.96381645523
dec_nom	22.008315679142
roll_nom	127.71405569284
revision	2
ontime	1838.6160911024
livetime	1815.3344270751
ontime0	1358.9942485988
ontime1	1339.5890883803
ontime2	1278.0516036749
ontime3	1316.7792764008
ontime6	1420.6958436966
ontime7	1838.6160911024
l2events	274269

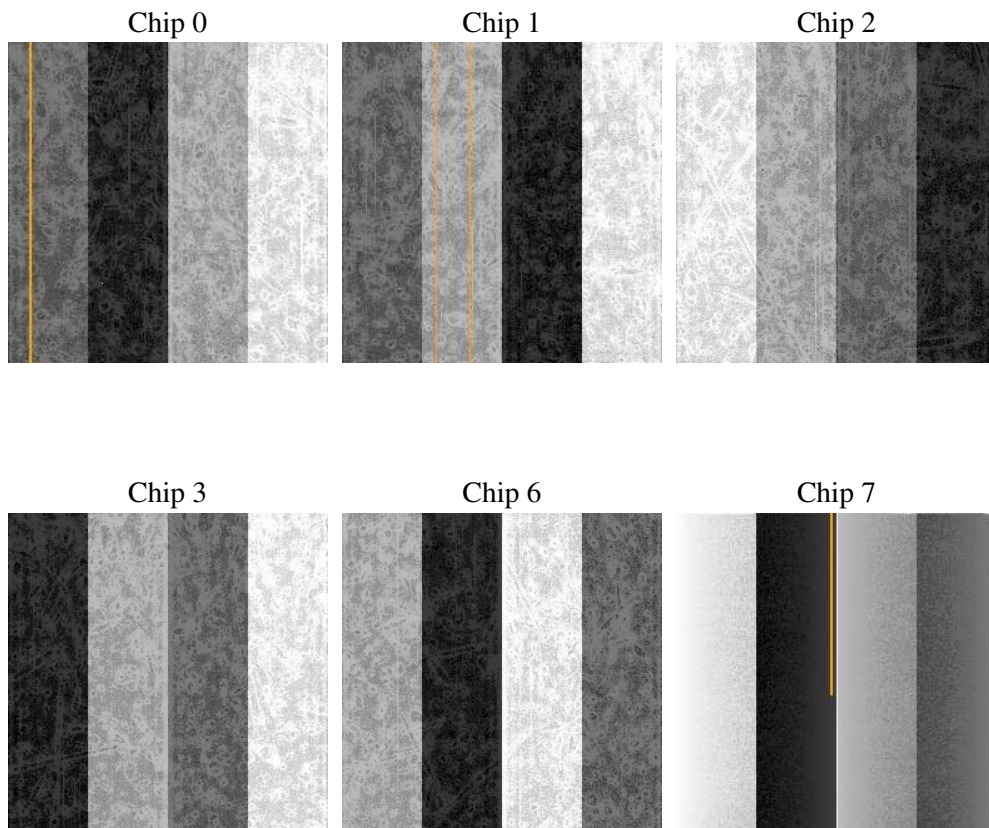
2 OBI

2.1 OBI

2.1.1 Images



2.1.2 Bias



2.1.3 Parameters

obi_num	0
ascdsver	7.6.7.2
caldbver	3.2.2
date	2006-05-25T22:00:44
revision	2

sched_exp_time	0.0
ontime	1840.8889312446
ontime0	1361.2260487378
ontime1	1341.779848516
ontime2	1280.2013238072
ontime3	1319.0931565464
ontime6	1422.8045238554
ontime7	1840.8889312446
llevents	355004

2.1.4 Events

	ccd 0	ccd 1	ccd 2	ccd 3	ccd 6	ccd 7
level 1 events	55070	54848	53558	53364	60521	77643
rejected events	10501	10106	10891	10000	11472	14402
rejected %	19%	18%	20%	18%	18%	18%

	ccd 0	ccd 1	ccd 2	ccd 3	ccd 6	ccd 7
grade 0 events	24397	24171	23685	24206	26336	11092
	44%	44%	44%	45%	43%	14%
grade 1 events	153	148	156	161	166	26
	0%	0%	0%	0%	0%	0%
grade 2 events	7691	8124	7198	7297	8467	19142
	13%	14%	13%	13%	13%	24%
grade 3 events	2901	2856	2746	2914	3036	4497
	5%	5%	5%	5%	5%	5%
grade 4 events	2866	2802	2807	2807	3031	4428
	5%	5%	5%	5%	5%	5%
grade 5 events	647	652	583	687	773	1575
	1%	1%	1%	1%	1%	2%
grade 6 events	6835	6907	6341	6249	8292	24195
	12%	12%	11%	11%	13%	31%
grade 7 events	9580	9188	10042	9043	10420	12688
	17%	16%	18%	16%	17%	16%

2.2 Compared Parameters

Parameter	Planned	Actual	Parameter	Planned	Actual
Instrument	ACIS	ACIS	Obspar format version number	6	6
Detector	ACIS-012367	ACIS-012367	Obspar file type	PREDICTED	ACTUAL
Grating	NONE	NONE	Obspar update status	NONE	UPDATED
Data mode	FAINT	FAINT	On-chip summing requested	N	N
Observation mode	SECONDARY	SECONDARY	Subarray requested	NONE	NONE
Pointing RA	0	303.9638164552259	Alternating exposures requested	N	N
Pointing Dec	0	22.00831567914249	Primary exposure time	0.000000	3.2
Pointing Roll	0.0	127.7140556928409			
SIM focus pos (mm)	-0.782348	-0.6828225247311905			
SIM defocus (mm)	0	0.8505141146731063			
SIM translation stage pos (mm)	-233.592463	250.466033080201			
SIM translation stage offset (mm)	0	-0.01005468664627074			
Observation start time	202641248.520828	202641247.49583			
Observation start date	2004-06-03T09:14:09	2004-06-03T09:14:07			
Observation end time	202685879.0728	202685878.0478			
Observation end date	2004-06-03T21:37:59	2004-06-03T21:37:58			
Read mode	TIMED	TIMED			

2.3 Aspect

2.4 Star Slots

2.5 FID Slots

A Summary

A.1 Status

V&V Scientist	Jen Lauer
V&V Date (YYYY-MM-DD)	2006.05.26
V&V Edition	1
V&V Disposition and Status	OK
V&V Charge Time	1.83861609

A.2 Comments