

V&V Reference Report

L2 ASCDS Version : 8.4.5

Observation 60170 - L2 Version 3
Chandra X-Ray Center

L2 Processing Date : Dec 3 2012

Contents

| | | |
|----------|-------------------------------|----------|
| 1 | Front | 2 |
| 2 | OBI | 3 |
| 2.1 | OBI | 3 |
| 2.1.1 | Images | 3 |
| 2.1.2 | Bias | 3 |
| 2.1.3 | Parameters | 4 |
| 2.1.4 | Events | 4 |
| 2.2 | Compared Parameters | 5 |
| 2.3 | Star Slots | 6 |
| 2.4 | FID Slots | 6 |
| A | Summary | 7 |
| A.1 | Status | 7 |
| A.2 | Comments | 7 |

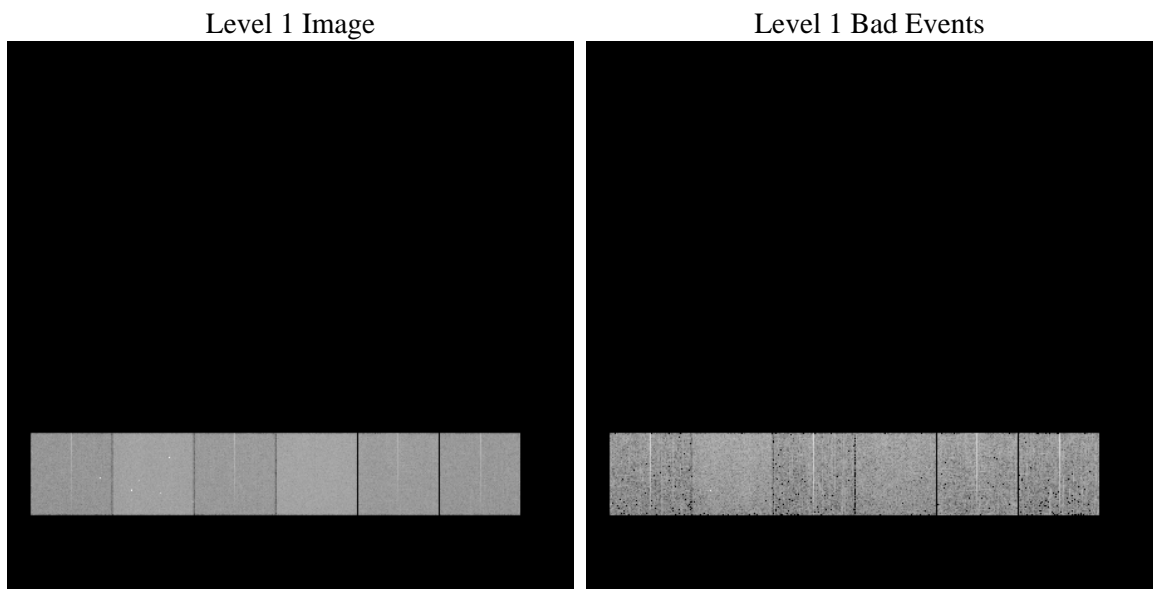
1 Front

| | | |
|----------|---|---|
| seq_num | | Sequence number |
| obs_id | 60170 | Observation id |
| title | ACIS-456789 diagnostics | Proposal title |
| observer | CHANDRA engineering request/realtime commanding | Principal investig |
| object | | Source name |
| dtcycle | 0 | |
| cycle | P | events from which exps? Prim/Second/Both |
| ra_targ | 0.0 | Observer's specified target RA [deg] |
| dec_targ | 0.0 | Observer's specified target Dec [deg] |
| ra_nom | 321.97498649507 | Nominal RA [deg] |
| dec_nom | -1.9860035404133 | Nominal Dec [deg] |
| roll_nom | 117.90325238852 | Nominal Roll [deg] |
| revision | 3 | Processing version of data |
| ontime | 5830.3095391691 | Sum of GTIs [s] |
| livetime | 5756.4826491932 | Livetime [s] |
| ontime4 | 3768.9229865968 | Sum of GTIs [s] |
| ontime5 | 5830.2684991658 | Sum of GTIs [s] |
| ontime6 | 4164.3647140265 | Sum of GTIs [s] |
| ontime7 | 5830.3095391691 | Sum of GTIs [s] |
| ontime8 | 4222.62030074 | Sum of GTIs [s] |
| ontime9 | 3986.2333522141 | Sum of GTIs [s] |
| l2events | 814399 | Number of level 2 events |

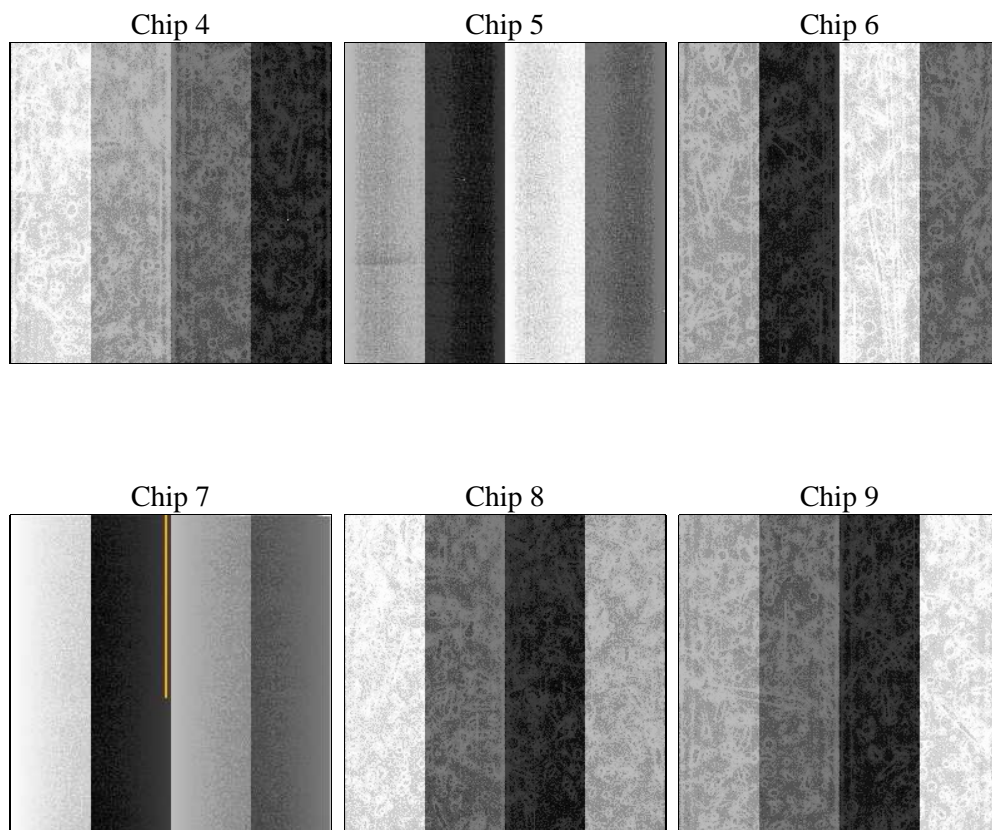
2 OBI

2.1 OBI

2.1.1 Images



2.1.2 Bias



2.1.3 Parameters

| | | | | | |
|----------|---------------------|--------------------------------|----------------|-----------------|---|
| obi_num | 0 | Obi number | sched_exp_time | 0.0 | [s] Scheduled observation exposure time |
| ascdsver | 8.4.5 | Processing system revision | ontime | 5830.3095391691 | Sum of GTIs [s] |
| caldsver | 4.5.2 | | ontime4 | 3768.9229865968 | Sum of GTIs [s] |
| date | 2012-12-03T12:45:53 | Date and time of file creation | ontime5 | 5830.2684991658 | Sum of GTIs [s] |
| revision | 3 | Processing version of data | ontime6 | 4164.3647140265 | Sum of GTIs [s] |
| | | | ontime7 | 5830.3095391691 | Sum of GTIs [s] |
| | | | ontime8 | 4222.62030074 | Sum of GTIs [s] |
| | | | ontime9 | 3986.2333522141 | Sum of GTIs [s] |
| | | | l1events | 1062939 | Number of level 1 events |

2.1.4 Events

| | ccd 4 | ccd 5 | ccd 6 | ccd 7 | ccd 8 | ccd 9 | | ccd 4 | ccd 5 | ccd 6 | ccd 7 | ccd 8 | ccd 9 |
|-----------------|--------|--------|--------|--------|--------|--------|----------------|-------|-------|-------|-------|-------|-------|
| level 1 events | 139881 | 213722 | 161463 | 227637 | 169979 | 150257 | grade 0 events | 64473 | 40956 | 70631 | 47113 | 73791 | 65939 |
| rejected events | 29112 | 39934 | 31264 | 34919 | 34655 | 30752 | | 46% | 19% | 43% | 20% | 43% | 43% |
| rejected % | 20% | 18% | 19% | 15% | 20% | 20% | grade 1 events | 464 | 431 | 387 | 140 | 384 | 417 |
| | | | | | | | | 0% | 0% | 0% | 0% | 0% | 0% |
| | | | | | | | grade 2 events | 17487 | 60978 | 22510 | 42378 | 23711 | 20425 |
| | | | | | | | | 12% | 28% | 13% | 18% | 13% | 13% |
| | | | | | | | grade 3 events | 7329 | 10714 | 8211 | 19394 | 8713 | 7807 |
| | | | | | | | | 5% | 5% | 5% | 8% | 5% | 5% |
| | | | | | | | grade 4 events | 7457 | 10603 | 8199 | 19456 | 8707 | 7612 |
| | | | | | | | | 5% | 4% | 5% | 8% | 5% | 5% |
| | | | | | | | grade 5 events | 1770 | 6471 | 2109 | 6422 | 2476 | 2162 |
| | | | | | | | | 1% | 3% | 1% | 2% | 1% | 1% |
| | | | | | | | grade 6 events | 14023 | 50537 | 20648 | 64377 | 20402 | 17722 |
| | | | | | | | | 10% | 23% | 12% | 28% | 12% | 11% |
| | | | | | | | grade 7 events | 26878 | 33032 | 28768 | 28357 | 31795 | 28173 |
| | | | | | | | | 19% | 15% | 17% | 12% | 18% | 18% |

2.2 Compared Parameters

| Parameter | Planned | Actual |
|-----------------------------------|---------------------|----------------------|
| Instrument | ACIS | ACIS |
| Detector | ACIS-456789 | ACIS-456789 |
| Grating | NONE | NONE |
| Data mode | FAINT | FAINT |
| Observation mode | SECONDARY | SECONDARY |
| [deg] Pointing RA | 0 | 321.9749864950692 |
| [deg] Pointing Dec | 0 | -1.986003540413296 |
| [deg] Pointing Roll | 0.0 | 117.9032523885207 |
| [mm] SIM focus pos | -0.684267 | -0.6828225247311905 |
| [mm] SIM defocus | 0 | 0.8505141146731063 |
| [mm] SIM translation stage pos | -190.132523 | 250.466033080201 |
| [mm] SIM translation stage offset | 0 | -0.01005468664627074 |
| [s] Observation start time (MET) | 204241499.09164 | 204241498.06664 |
| Observation start date | 2004-06-21T21:44:59 | 2004-06-21T21:44:58 |
| [s] Observation end time (MET) | 204266476.292746 | 204266475.26774 |
| Observation end date | 2004-06-22T04:41:16 | 2004-06-22T04:41:15 |
| Read mode | TIMED | TIMED |

| Parameter | Planned | Actual |
|---------------------------------|-----------|---------|
| Obspar format version number | 7 | 7 |
| Obspar file type | PREDICTED | ACTUAL |
| Obspar update status | NONE | UPDATED |
| On-chip summing requested | N | N |
| Subarray requested | NONE | NONE |
| Alternating exposures requested | N | N |
| [s] Primary exposure time | 0.000000 | 3.2 |

2.3 Star Slots

2.4 FID Slots

A Summary

A.1 Status

| | |
|----------------------------|-----------------|
| V&V Scientist | Beth Sundheim |
| V&V Date (YYYY-MM-DD) | 2012.12.23 |
| V&V Edition | 1 |
| V&V Disposition and Status | OK |
| V&V Charge Time | 5.8303095391691 |

A.2 Comments