

V&V Reference Report

L2 ASCDS Version : 7.6.7.1

Observation 60030 - L2 Version 001
Chandra X-Ray Center

L2 Processing Date : Apr 16 2006

Contents

1	Front	2
2	OBI	3
2.1	OBI	3
2.1.1	Images	3
2.1.2	Bias	3
2.1.3	Parameters	4
2.1.4	Events	4
2.2	Compared Parameters	5
2.3	Aspect	6
2.4	Star Slots	8
2.5	FID Slots	8
A	Summary	9
A.1	Status	9
A.2	Comments	9

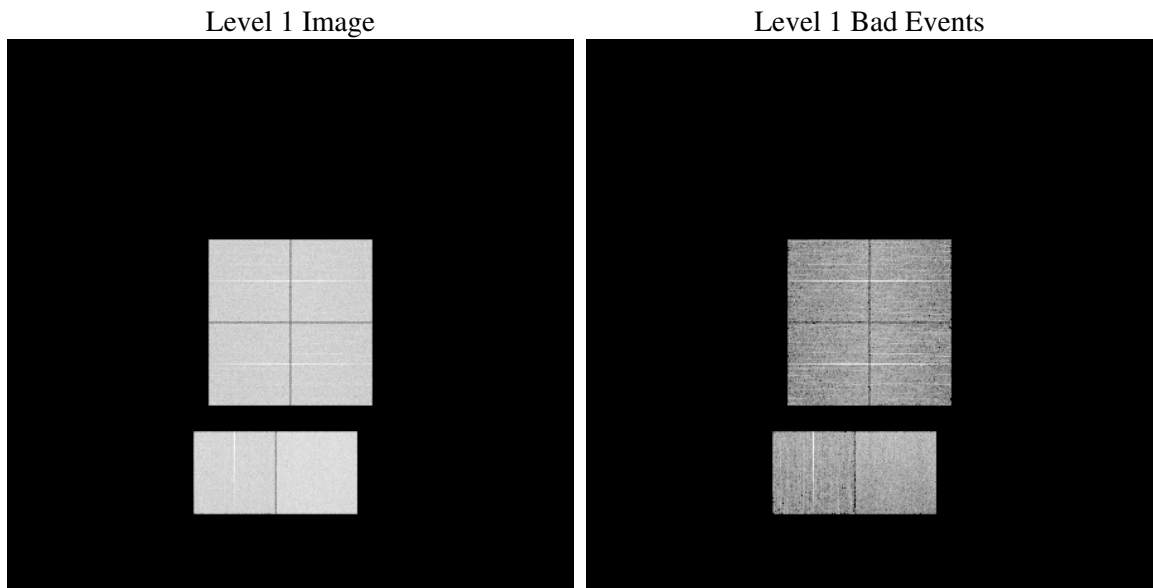
1 Front

seq_num	
obs_id	60030
title	ACIS-012367 diagnostics
observer	CHANDRA engineering request/realtime commanding
object	
dtcycle	0
cycle	P
ra_targ	0.0
dec_targ	0.0
ra_nom	179.94972238188
dec_nom	-61.014428439922
roll_nom	177.15898687929
revision	2
ontime	8280.1398941875
livetime	8175.2917771456
ontime0	6659.7010995746
ontime1	6740.7656585276
ontime2	6413.4706169367
ontime3	6458.679192394
ontime6	7071.4266141057
ontime7	8280.1398941875
l2events	1136801

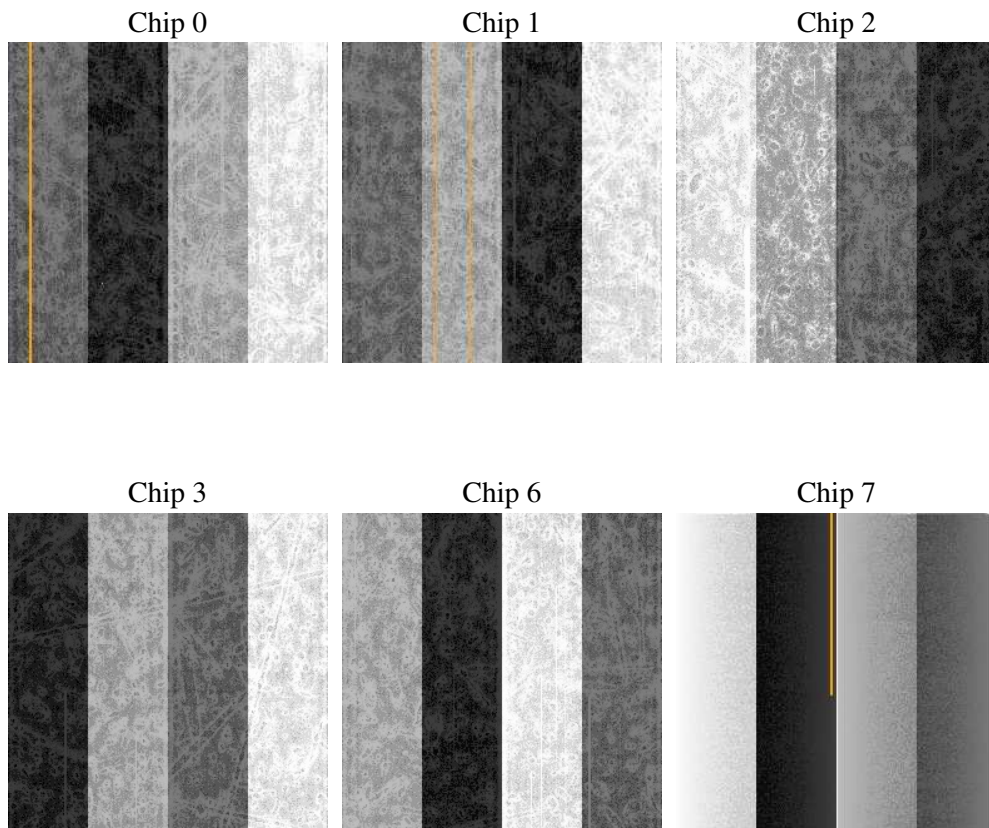
2 OBI

2.1 OBI

2.1.1 Images



2.1.2 Bias



2.1.3 Parameters

obi_num	0
ascdsver	7.6.7.1
caldbver	3.2.1
date	2006-04-17T01:24:20
revision	2

sched_exp_time	0.0
ontime	8280.7514100671
ontime0	6660.2715754509
ontime1	6741.2950944006
ontime2	6413.9590128064
ontime3	6459.3317482769
ontime6	7071.8739700019
ontime7	8280.7514100671
l1events	1497673

2.1.4 Events

	ccd 0	ccd 1	ccd 2	ccd 3	ccd 6	ccd 7
level 1 events	232401	237118	228272	232846	259396	307640
rejected events	46112	48130	46512	49523	51661	61878
rejected %	19%	20%	20%	21%	19%	20%

	ccd 0	ccd 1	ccd 2	ccd 3	ccd 6	ccd 7
grade 0 events	102262	103312	101837	102506	112188	40080
	44%	43%	44%	44%	43%	13%
grade 1 events	612	519	592	674	603	130
	0%	0%	0%	0%	0%	0%
grade 2 events	32480	33623	30221	31270	35988	75586
	13%	14%	13%	13%	13%	24%
grade 3 events	12191	12054	11819	11823	12883	17006
	5%	5%	5%	5%	4%	5%
grade 4 events	11866	12094	11981	12019	12898	16720
	5%	5%	5%	5%	4%	5%
grade 5 events	2888	3005	2722	3072	3406	7134
	1%	1%	1%	1%	1%	2%
grade 6 events	27490	27905	25902	25705	33778	96370
	11%	11%	11%	11%	13%	31%
grade 7 events	42612	44606	43198	45777	47652	54614
	18%	18%	18%	19%	18%	17%

2.2 Compared Parameters

Parameter	Planned	Actual	Parameter	Planned	Actual
Instrument	ACIS	ACIS	Obspar format version number	6	6
Detector	ACIS-012367	ACIS-012367	Obspar file type	PREDICTED	ACTUAL
Grating	NONE	NONE	Obspar update status	NONE	UPDATED
Data mode	FAINT	FAINT	On-chip summing requested	N	N
Observation mode	SECONDARY	SECONDARY	Subarray requested	NONE	NONE
Pointing RA	0	179.9497223818784	Alternating exposures requested	N	N
Pointing Dec	0	-61.0144284399224	Primary exposure time	3.2	3.2
Pointing Roll	0.0	177.1589868792926			
SIM focus pos (mm)	-0.782348	-0.7809083437167272			
SIM defocus (mm)	0	0.7524282956875696			
SIM translation stage pos (mm)	-233.592463	250.466033080201			
SIM translation stage offset (mm)	0	-0.01005468664627074			
Observation start time	212499282.808976	212499281.78397			
Observation start date	2004-09-25T11:34:43	2004-09-25T11:34:41			
Observation end time	212520947.209946	212520946.18494			
Observation end date	2004-09-25T17:35:47	2004-09-25T17:35:46			
Read mode	TIMED	TIMED			

2.3 Aspect

2.4 Star Slots

2.5 FID Slots

A Summary

A.1 Status

V&V Scientist	Jen Lauer
V&V Date (YYYY-MM-DD)	2006.04.17
V&V Edition	1
V&V Disposition and Status	OK
V&V Charge Time	8.28013989

A.2 Comments