

V&V Reference Report

L2 ASCDS Version : 8.5.1.1

Observation 59630 - L2 Version 3
Chandra X-Ray Center

L2 Processing Date : Dec 24 2012

Contents

1	Front	2
2	OBI	3
2.1	OBI	3
2.1.1	Images	3
2.1.2	Bias	3
2.1.3	Parameters	4
2.1.4	Events	4
2.2	Compared Parameters	5
2.3	Star Slots	6
2.4	FID Slots	6
A	Summary	7
A.1	Status	7
A.2	Comments	7

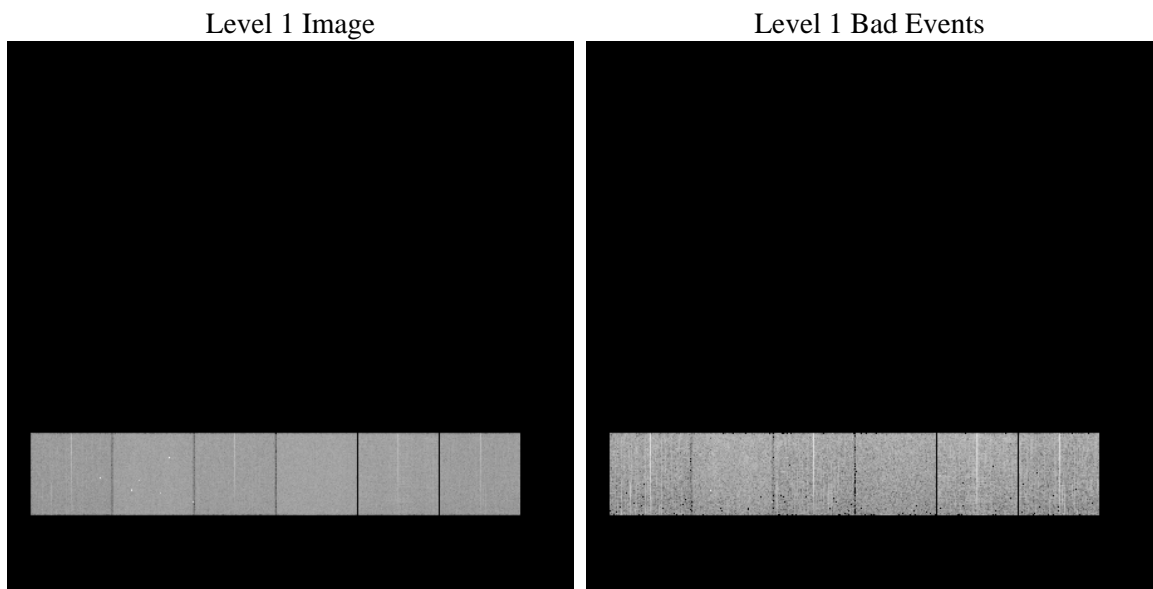
1 Front

seq_num	 	Sequence number
obs_id	59630	Observation id
title	ACIS-456789 diagnostics	Proposal title
observer	CHANDRA engineering request/realtime commanding	Principal investig
object	 	Source name
dtcycle	0	
cycle	P	events from which exps? Prim/Second/Both
ra_targ	0.0	Observer's specified target RA [deg]
dec_targ	0.0	Observer's specified target Dec [deg]
ra_nom	120.06027703236	Nominal RA [deg]
dec_nom	63.985423206416	Nominal Dec [deg]
roll_nom	301.57977064446	Nominal Roll [deg]
revision	3	Processing version of data
ontime	5513.5999794602	Sum of GTIs [s]
livetime	5443.783456629	Livetime [s]
ontime4	4453.6973518133	Sum of GTIs [s]
ontime5	5513.5738372505	Sum of GTIs [s]
ontime6	4852.376548171	Sum of GTIs [s]
ontime7	5513.5999794602	Sum of GTIs [s]
ontime8	4930.0775250494	Sum of GTIs [s]
ontime9	4683.197209537	Sum of GTIs [s]
l2events	722372	Number of level 2 events

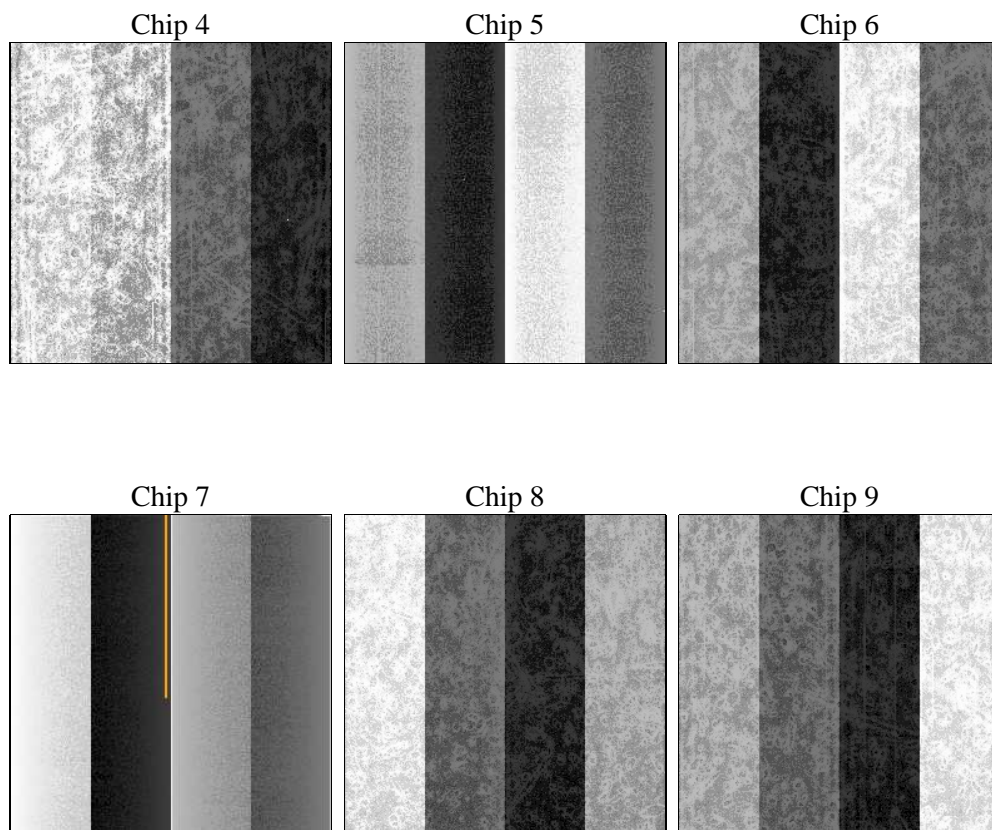
2 OBI

2.1 OBI

2.1.1 Images



2.1.2 Bias



2.1.3 Parameters

obi_num	0	Obi number	sched_exp_time	0.0	[s] Scheduled observation exposure time
ascdsver	8.5.1.1	Processing system revision	ontime	5513.5999794602	Sum of GTIs [s]
caldsver	4.5.5	 	ontime4	4453.6973518133	Sum of GTIs [s]
date	2012-12-24T14:30:57	Date and time of file creation	ontime5	5513.5738372505	Sum of GTIs [s]
revision	3	Processing version of data	ontime6	4852.376548171	Sum of GTIs [s]
			ontime7	5513.5999794602	Sum of GTIs [s]
			ontime8	4930.0775250494	Sum of GTIs [s]
			ontime9	4683.197209537	Sum of GTIs [s]
			l1events	1001763	Number of level 1 events

2.1.4 Events

	ccd 4	ccd 5	ccd 6	ccd 7	ccd 8	ccd 9		ccd 4	ccd 5	ccd 6	ccd 7	ccd 8	ccd 9
level 1 events	145026	179204	162344	186793	174991	153405	grade 0 events	62203	29395	67442	36390	70355	63683
rejected events	37676	40643	37551	34845	43527	36997		42%	16%	41%	19%	40%	41%
rejected %	25%	22%	23%	18%	24%	24%	grade 1 events	477	252	351	112	413	408
								0%	0%	0%	0%	0%	0%
							grade 2 events	16855	50601	21513	33188	23114	19861
								11%	28%	13%	17%	13%	12%
							grade 3 events	7185	7537	7728	14994	8547	7441
								4%	4%	4%	8%	4%	4%
							grade 4 events	7021	7691	7818	14646	8602	7526
								4%	4%	4%	7%	4%	4%
							grade 5 events	2112	6288	2377	6062	2916	2405
								1%	3%	1%	3%	1%	1%
							grade 6 events	14160	43414	20372	52814	20919	17897
								9%	24%	12%	28%	11%	11%
							grade 7 events	35013	34026	34743	28587	40125	34184
								24%	18%	21%	15%	22%	22%

2.2 Compared Parameters

Parameter	Planned	Actual	Parameter	Planned	Actual
Instrument	ACIS	ACIS	Obspar format version number	7	7
Detector	ACIS-456789	ACIS-456789	Obspar file type	PREDICTED	ACTUAL
Grating	NONE	NONE	Obspar update status	NONE	UPDATED
Data mode	FAINT	FAINT	On-chip summing requested	N	N
Observation mode	SECONDARY	SECONDARY	Subarray requested	NONE	NONE
[deg] Pointing RA	0	120.0602770323614	Alternating exposures requested	N	N
[deg] Pointing Dec	0	63.9854232064156	[s] Primary exposure time	3.2	3.2
[deg] Pointing Roll	0.0	301.5797706444578			
[mm] SIM focus pos	-0.684267	-0.7809083437167272			
[mm] SIM defocus	0	0.7524282956875696			
[mm] SIM translation stage pos	-190.132523	250.466033080201			
[mm] SIM translation stage offset	0	-0.01005468664627074			
[s] Observation start time (MET)	234396904.098038	234396903.07305			
Observation start date	2005-06-05T22:15:04	2005-06-05T22:15:03			
[s] Observation end time (MET)	234405065.14841	234405064.12342			
Observation end date	2005-06-06T00:31:05	2005-06-06T00:31:04			
Read mode	TIMED	TIMED			

2.3 Star Slots

2.4 FID Slots

A Summary

A.1 Status

V&V Scientist	Jen Lauer
V&V Date (YYYY-MM-DD)	2013.01.16
V&V Edition	1
V&V Disposition and Status	OK
V&V Charge Time	5.5135999794602

A.2 Comments