

V&V Reference Report

L2 ASCDS Version : 7.6.7.1

Observation 59630 - L2 Version 002
Chandra X-Ray Center

L2 Processing Date : Mar 8 2006

Contents

1	Front	2
2	OBI	3
2.1	OBI	3
2.1.1	Images	3
2.1.2	Bias	3
2.1.3	Parameters	4
2.1.4	Events	4
2.2	Compared Parameters	5
2.3	Aspect	6
2.4	Star Slots	8
2.5	FID Slots	8
A	Summary	9
A.1	Status	9
A.2	Comments	9

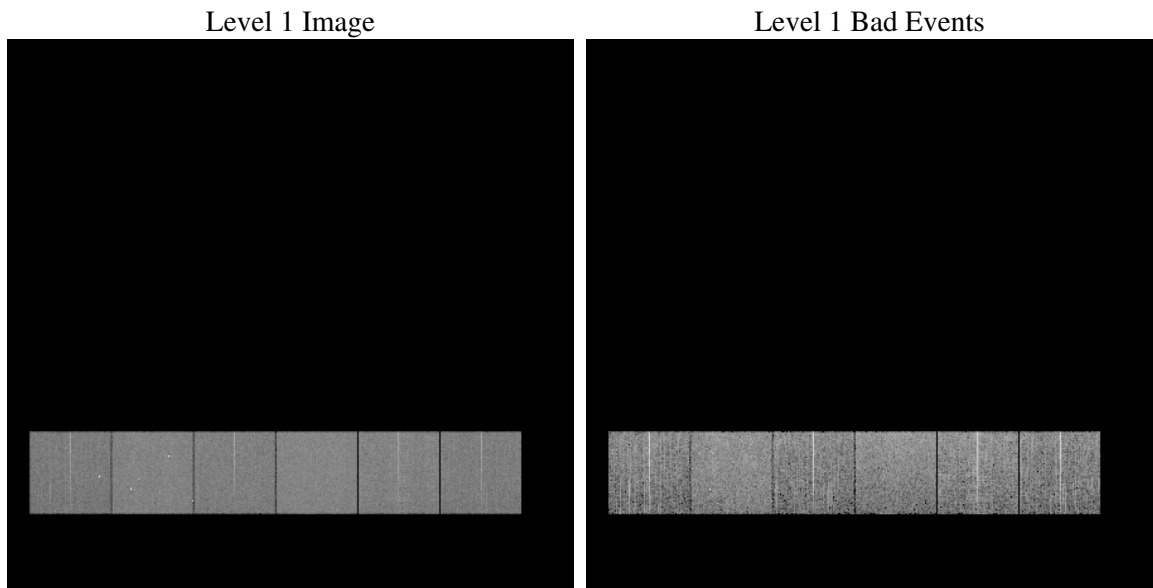
1 Front

seq_num	
obs_id	59630
title	ACIS-456789 diagnostics
observer	CHANDRA engineering request/realtime commanding
object	
dtcycle	0
cycle	P
ra_targ	0.0
dec_targ	0.0
ra_nom	120.06024392746
dec_nom	63.985446887458
roll_nom	301.57980038813
revision	2
ontime	5513.5999794602
livetime	5443.783456629
ontime4	4453.8055740297
ontime5	5513.5999794602
ontime6	4852.4437303841
ontime7	5513.5999794602
ontime8	4930.2267872393
ontime9	4681.597209543
l2events	712967

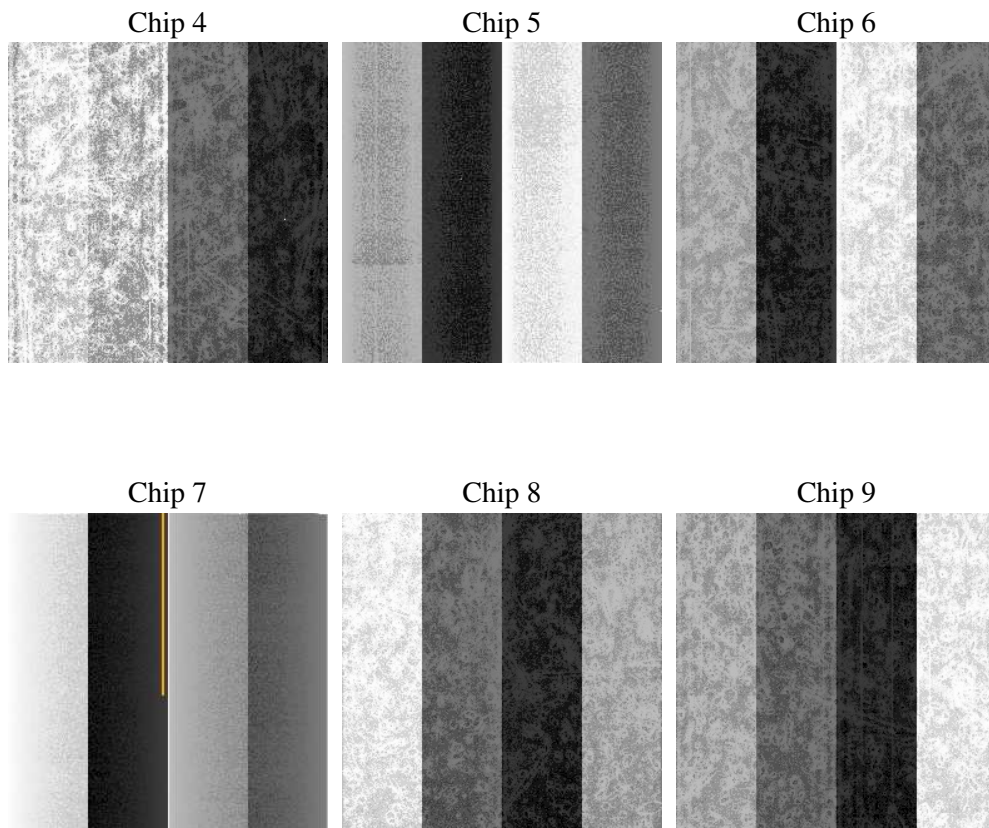
2 OBI

2.1 OBI

2.1.1 Images



2.1.2 Bias



2.1.3 Parameters

obi_num	0
ascdsver	7.6.7.1
caldbver	3.2.1
date	2006-03-09T02:32:12
revision	2

sched_exp_time	0.0
ontime	5516.1805315316
ontime4	4456.386126101
ontime5	5516.1805315316
ontime6	4855.0242824554
ontime7	5516.1805315316
ontime8	4932.8073393106
ontime9	4683.2531473339
l1events	1001763

2.1.4 Events

	ccd 4	ccd 5	ccd 6	ccd 7	ccd 8	ccd 9
level 1 events	145026	179204	162344	186793	174991	153405
rejected events	37602	44181	37471	41235	43454	37099
rejected %	25%	24%	23%	22%	24%	24%

	ccd 4	ccd 5	ccd 6	ccd 7	ccd 8	ccd 9
grade 0 events	62203	15435	67442	24511	70356	63683
	42%	8%	41%	13%	40%	41%
grade 1 events	477	175	351	72	413	408
	0%	0%	0%	0%	0%	0%
grade 2 events	16855	62454	21513	44167	23113	19861
	11%	34%	13%	23%	13%	12%
grade 3 events	7185	3935	7728	10194	8547	7441
	4%	2%	4%	5%	4%	4%
grade 4 events	7021	4017	7818	9841	8602	7526
	4%	2%	4%	5%	4%	4%
grade 5 events	2112	4325	2377	4765	2916	2405
	1%	2%	1%	2%	1%	1%
grade 6 events	14160	49182	20372	56845	20919	17897
	9%	27%	12%	30%	11%	11%
grade 7 events	35013	39681	34743	36398	40125	34184
	24%	22%	21%	19%	22%	22%

2.2 Compared Parameters

Parameter	Planned	Actual	Parameter	Planned	Actual
Instrument	ACIS	ACIS	Obspar format version number	6	6
Detector	ACIS-456789	ACIS-456789	Obspar file type	PREDICTED	ACTUAL
Grating	NONE	NONE	Obspar update status	NONE	UPDATED
Data mode	FAINT	FAINT	On-chip summing requested	N	N
Observation mode	SECONDARY	SECONDARY	Subarray requested	NONE	NONE
Pointing RA	0	120.0602439274564	Alternating exposures requested	N	N
Pointing Dec	0	63.98544688745764	Primary exposure time	3.2	3.2
Pointing Roll	0.0	301.5798003881265			
SIM focus pos (mm)	-0.684267	-0.7809083437167272			
SIM defocus (mm)	0	0.7524282956875696			
SIM translation stage pos (mm)	-190.132523	250.466033080201			
SIM translation stage offset (mm)	0	-0.01005468664627074			
Observation start time	234396904.098038	234396903.07305			
Observation start date	2005-06-05T22:15:04	2005-06-05T22:15:03			
Observation end time	234405065.14841	234405064.12342			
Observation end date	2005-06-06T00:31:05	2005-06-06T00:31:04			
Read mode	TIMED	TIMED			

2.3 Aspect

2.4 Star Slots

2.5 FID Slots

A Summary

A.1 Status

V&V Scientist	Beth Sundheim
V&V Date (YYYY-MM-DD)	2006.03.09
V&V Edition	1
V&V Disposition and Status	OK
V&V Charge Time	5.51359997

A.2 Comments