

V&V Reference Report

L2 ASCDS Version : 7.6.7.1

Observation 59500 - L2 Version 002
Chandra X-Ray Center

L2 Processing Date : Mar 20 2006

Contents

1	Front	2
2	OBI	3
2.1	OBI	3
2.1.1	Images	3
2.1.2	Bias	3
2.1.3	Parameters	4
2.1.4	Events	4
2.2	Compared Parameters	5
2.3	Aspect	6
2.4	Star Slots	8
2.5	FID Slots	8
A	Summary	9
A.1	Status	9
A.2	Comments	9

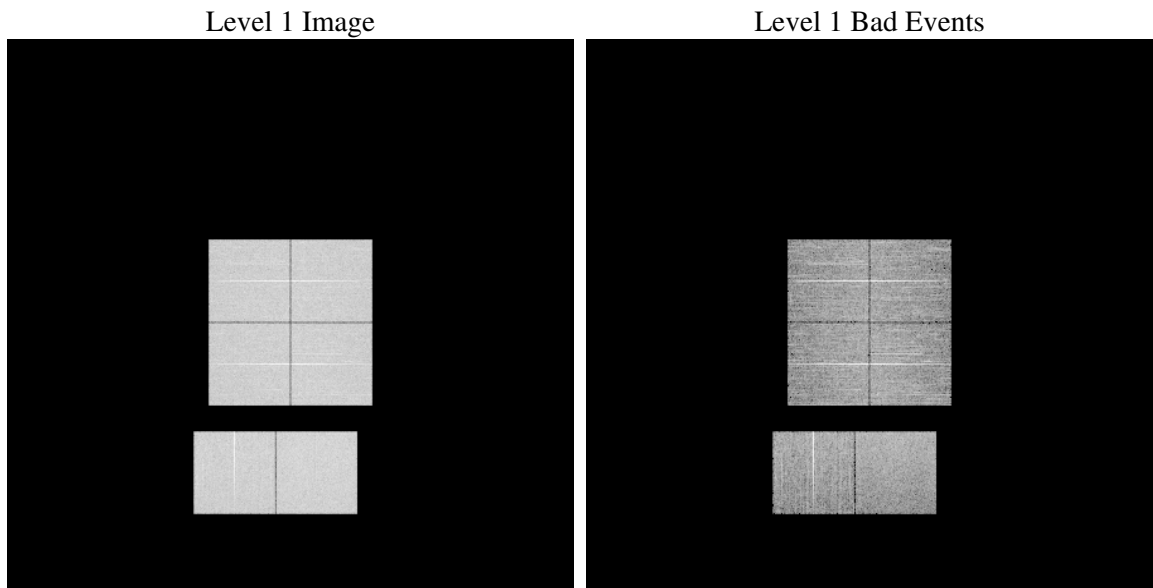
1 Front

seq_num	
obs_id	59500
title	ACIS-012367 diagnostics
observer	CHANDRA engineering request/realtime commanding
object	
dtcycle	0
cycle	P
ra_targ	0.0
dec_targ	0.0
ra_nom	346.9716129219
dec_nom	8.0054040694034
roll_nom	136.21082267468
revision	2
ontime	8281.5999691486
livetime	8176.7333637585
ontime0	8213.5393829644
ontime1	8281.5999691486
ontime2	8158.4427177608
ontime3	8161.6921163797
ontime6	8281.5999691486
ontime7	8281.5999691486
l2events	1066393

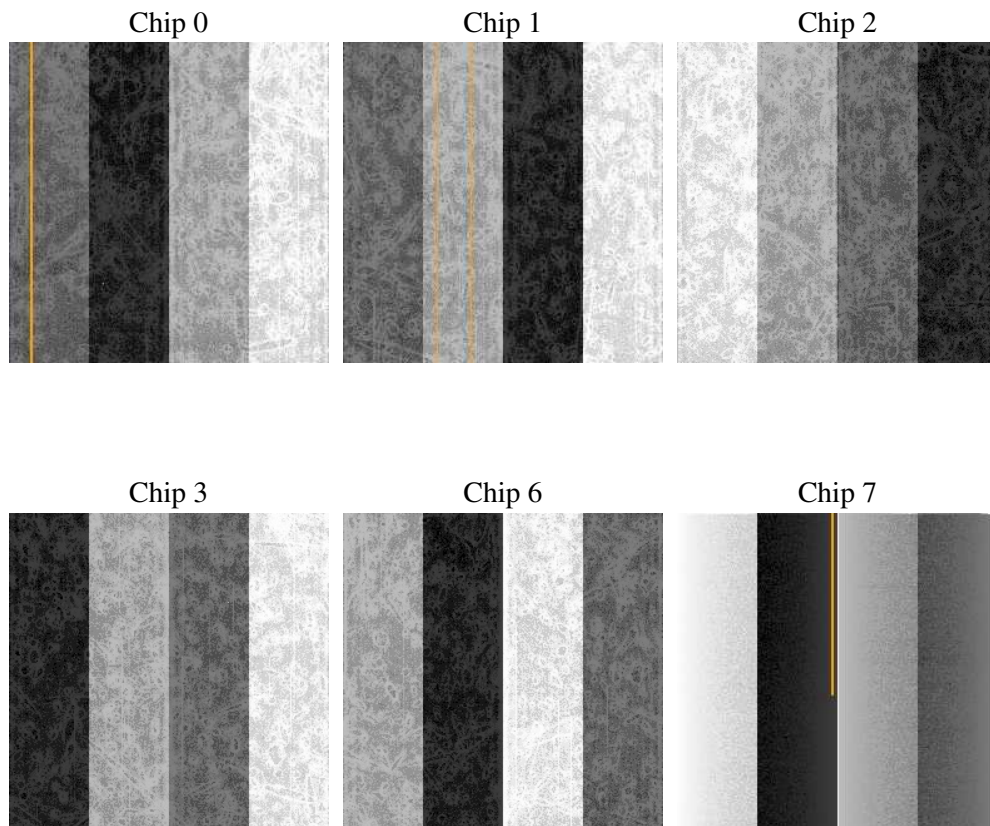
2 OBI

2.1 OBI

2.1.1 Images



2.1.2 Bias



2.1.3 Parameters

obi_num	0
ascdsver	7.6.7.1
caldsver	3.2.1
date	2006-03-20T21:48:11
revision	2

sched_exp_time	0.0
ontime	8284.0168099403
ontime0	8215.9562237561
ontime1	8284.0168099403
ontime2	8160.8595585525
ontime3	8164.1005889773
ontime6	8284.0168099403
ontime7	8284.0168099403
l1events	1481871

2.1.4 Events

	ccd 0	ccd 1	ccd 2	ccd 3	ccd 6	ccd 7
level 1 events	241205	240874	241588	246562	250544	261098
rejected events	58710	56022	59299	62686	60591	62240
rejected %	24%	23%	24%	25%	24%	23%

	ccd 0	ccd 1	ccd 2	ccd 3	ccd 6	ccd 7
grade 0 events	100315	98983	103314	104228	99915	30412
	41%	41%	42%	42%	39%	11%
grade 1 events	547	452	557	609	449	90
	0%	0%	0%	0%	0%	0%
grade 2 events	32000	34984	29608	30492	35958	62084
	13%	14%	12%	12%	14%	23%
grade 3 events	11626	11439	11769	11819	11317	13333
	4%	4%	4%	4%	4%	5%
grade 4 events	11671	11430	11919	11903	11440	12794
	4%	4%	4%	4%	4%	4%
grade 5 events	3268	3421	3190	3658	3676	6611
	1%	1%	1%	1%	1%	2%
grade 6 events	26965	28079	25751	25513	31391	80327
	11%	11%	10%	10%	12%	30%
grade 7 events	54813	52086	55480	58340	56398	55447
	22%	21%	22%	23%	22%	21%

2.2 Compared Parameters

Parameter	Planned	Actual	Parameter	Planned	Actual
Instrument	ACIS	ACIS	Obspar format version number	6	6
Detector	ACIS-012367	ACIS-012367	Obspar file type	PREDICTED	ACTUAL
Grating	NONE	NONE	Obspar update status	NONE	UPDATED
Data mode	FAINT	FAINT	On-chip summing requested	N	N
Observation mode	SECONDARY	SECONDARY	Subarray requested	NONE	NONE
Pointing RA	0	346.971612921897	Alternating exposures requested	N	N
Pointing Dec	0	8.005404069403365	Primary exposure time	3.2	3.2
Pointing Roll	0.0	136.2108226746804			
SIM focus pos (mm)	-0.782348	-0.6828225247311905			
SIM defocus (mm)	0	0.8505141146731063			
SIM translation stage pos (mm)	-233.592463	250.466033080201			
SIM translation stage offset (mm)	0	-0.01005468664627074			
Observation start time	240603195.331945	240603194.30694			
Observation start date	2005-08-16T18:13:15	2005-08-16T18:13:14			
Observation end time	240625638.732975	240625637.70797			
Observation end date	2005-08-17T00:27:19	2005-08-17T00:27:17			
Read mode	TIMED	TIMED			

2.3 Aspect

2.4 Star Slots

2.5 FID Slots

A Summary

A.1 Status

V&V Scientist	Doug Morgan
V&V Date (YYYY-MM-DD)	2006.03.20
V&V Edition	1
V&V Disposition and Status	OK
V&V Charge Time	8.28159996

A.2 Comments