

# V&V Reference Report

## L2 ASCDS Version : 8.4.3

Observation 59090 - L2 Version 2  
Chandra X-Ray Center

L2 Processing Date : Mar 27 2012

## Contents

<b>1</b>	<b>Front</b>	<b>2</b>
<b>2</b>	<b>OBI</b>	<b>3</b>
2.1	OBI . . . . .	3
2.1.1	Images . . . . .	3
2.1.2	Bias . . . . .	3
2.1.3	Parameters . . . . .	4
2.1.4	Events . . . . .	4
2.2	Compared Parameters . . . . .	5
2.3	Star Slots . . . . .	6
2.4	FID Slots . . . . .	6
<b>A</b>	<b>Summary</b>	<b>7</b>
A.1	Status . . . . .	7
A.2	Comments . . . . .	7

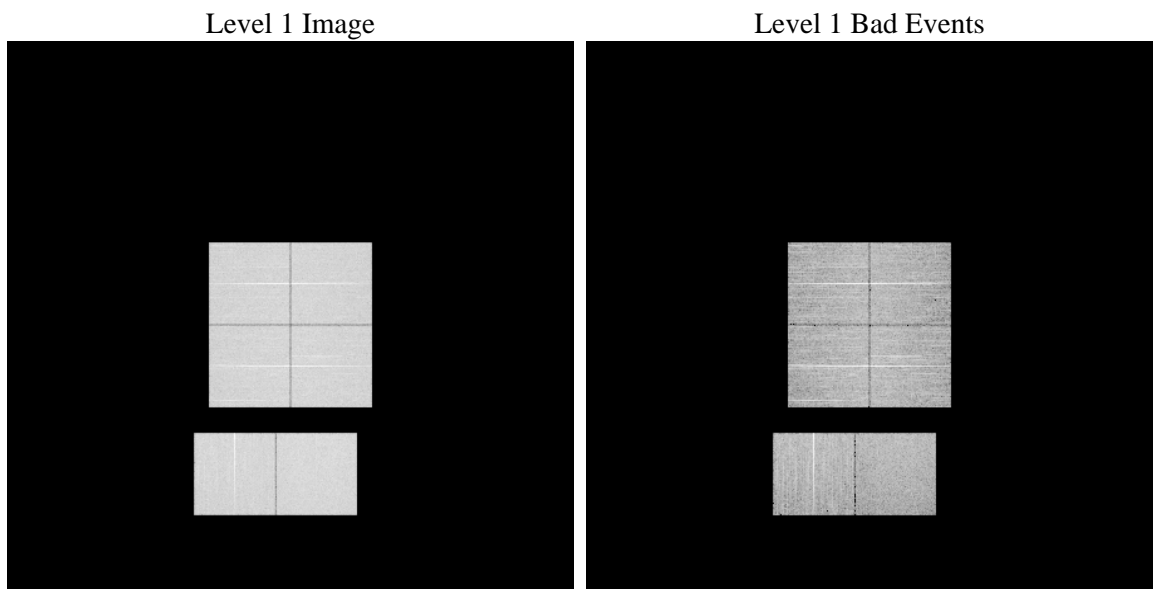
# 1 Front

seq_num	&#160	Sequence number
obs_id	59090	Observation id
title	ACIS-012367 diagnostics	Proposal title
observer	CHANDRA engineering request/realtime commanding	Principal investig
object	&#160	Source name
dtcycle	0	&#160
cycle	P	events from which exps? Prim/Second/Both
ra_targ	0.0	Observer's specified target RA [deg]
dec_targ	0.0	Observer's specified target Dec [deg]
ra_nom	136.50711283368	Nominal RA [deg]
dec_nom	17.972205234619	Nominal Dec [deg]
roll_nom	250.84468805226	Nominal Roll [deg]
revision	2	Processing version of data
ontime	8274.7007229328	Sum of GTIs [s]
livetime	8169.9214799524	Livetime [s]
ontime0	8274.6596829295	Sum of GTIs [s]
ontime1	8274.6186429262	Sum of GTIs [s]
ontime2	8274.5776029229	Sum of GTIs [s]
ontime3	8274.7417629361	Sum of GTIs [s]
ontime6	8274.5365629494	Sum of GTIs [s]
ontime7	8274.7007229328	Sum of GTIs [s]
l2events	965843	Number of level 2 events

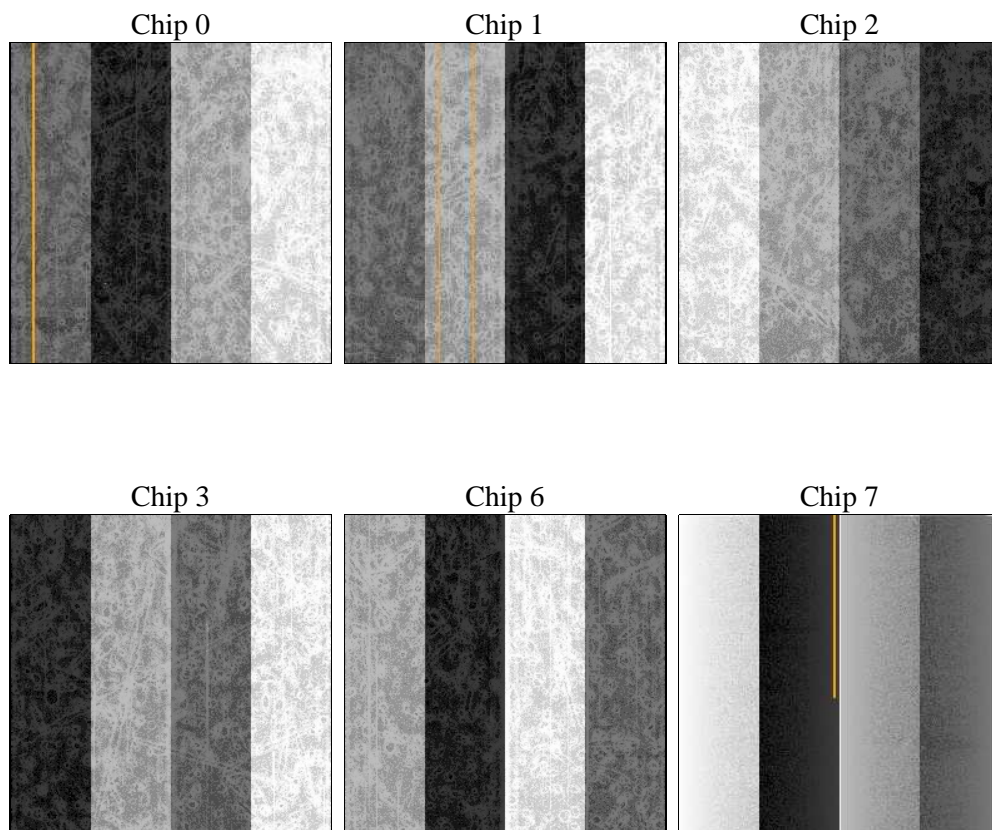
## 2 OBI

### 2.1 OBI

#### 2.1.1 Images



#### 2.1.2 Bias



### 2.1.3 Parameters

obi_num	0	Obi number	sched_exp_time	0.0	[s] Scheduled observation exposure time
ascdsver	8.4.3	Processing system revision	ontime	8274.7007229328	Sum of GTIs [s]
caldsver	4.4.8	&#160	ontime0	8274.6596829295	Sum of GTIs [s]
date	2012-03-27T04:27:19	Date and time of file creation	ontime1	8274.6186429262	Sum of GTIs [s]
revision	2	Processing version of data	ontime2	8274.5776029229	Sum of GTIs [s]
			ontime3	8274.7417629361	Sum of GTIs [s]
			ontime6	8274.5365629494	Sum of GTIs [s]
			ontime7	8274.7007229328	Sum of GTIs [s]
			l1events	1413962	Number of level 1 events

### 2.1.4 Events

	ccd 0	ccd 1	ccd 2	ccd 3	ccd 6	ccd 7		ccd 0	ccd 1	ccd 2	ccd 3	ccd 6	ccd 7
level 1 events	229281	225319	233934	234789	239873	250766	grade 0 events	89084	87996	91756	92233	91821	43453
rejected events	66716	62488	69610	69841	69939	58296		38%	39%	39%	39%	38%	17%
rejected %	29%	27%	29%	29%	29%	23%	grade 1 events	567	467	648	629	513	171
								0%	0%	0%	0%	0%	0%
							grade 2 events	28416	29508	27543	27989	29543	41833
								12%	13%	11%	11%	12%	16%
							grade 3 events	10737	10535	11058	10986	10621	18605
								4%	4%	4%	4%	4%	7%
							grade 4 events	10443	10503	11038	10924	10621	18721
								4%	4%	4%	4%	4%	7%
							grade 5 events	3691	3784	3627	4186	4101	9767
								1%	1%	1%	1%	1%	3%
							grade 6 events	23943	24353	22982	22897	27391	69936
								10%	10%	9%	9%	11%	27%
							grade 7 events	62400	58173	65282	64945	65262	48280
								27%	25%	27%	27%	27%	19%

## 2.2 Compared Parameters

Parameter	Planned	Actual
Instrument	ACIS	ACIS
Detector	ACIS-012367	ACIS-012367
Grating	NONE	NONE
Data mode	FAINT	FAINT
Observation mode	SECONDARY	SECONDARY
[deg] Pointing RA	0	136.5071128336763
[deg] Pointing Dec	0	17.97220523461933
[deg] Pointing Roll	0.0	250.844688052259
[mm] SIM focus pos	-0.782348	-1.523540733526241
[mm] SIM defocus	0	0.009795905878055677
[mm] SIM translation stage pos	-233.592463	250.466033080201
[mm] SIM translation stage offset	0	-0.01005468664627074
[s] Observation start time (MET)	257737565.573303	257737564.54829
Observation start date	2006-03-03T01:46:06	2006-03-03T01:46:04
[s] Observation end time (MET)	257758877.374295	257758876.34928
Observation end date	2006-03-03T07:41:17	2006-03-03T07:41:16
Read mode	TIMED	TIMED

Parameter	Planned	Actual
Obspar format version number	7	7
Obspar file type	PREDICTED	ACTUAL
Obspar update status	NONE	UPDATED
On-chip summing requested	N	N
Subarray requested	NONE	NONE
Alternating exposures requested	N	N
[s] Primary exposure time	3.2	3.2

## 2.3 Star Slots

## 2.4 FID Slots

## **A Summary**

### **A.1 Status**

V&V Scientist	Jen Lauer
V&V Date (YYYY-MM-DD)	2012.03.28
V&V Edition	1
V&V Disposition and Status	OK
V&V Charge Time	8.2747007229328

### **A.2 Comments**