

V&V Reference Report

L2 ASCDS Version : 8.4.3.1

Observation 59070 - L2 Version 2
Chandra X-Ray Center

L2 Processing Date : Mar 27 2012

Contents

1	Front	2
2	OBI	3
2.1	OBI	3
2.1.1	Images	3
2.1.2	Bias	3
2.1.3	Parameters	4
2.1.4	Events	4
2.2	Compared Parameters	5
2.3	Star Slots	6
2.4	FID Slots	6
A	Summary	7
A.1	Status	7
A.2	Comments	7

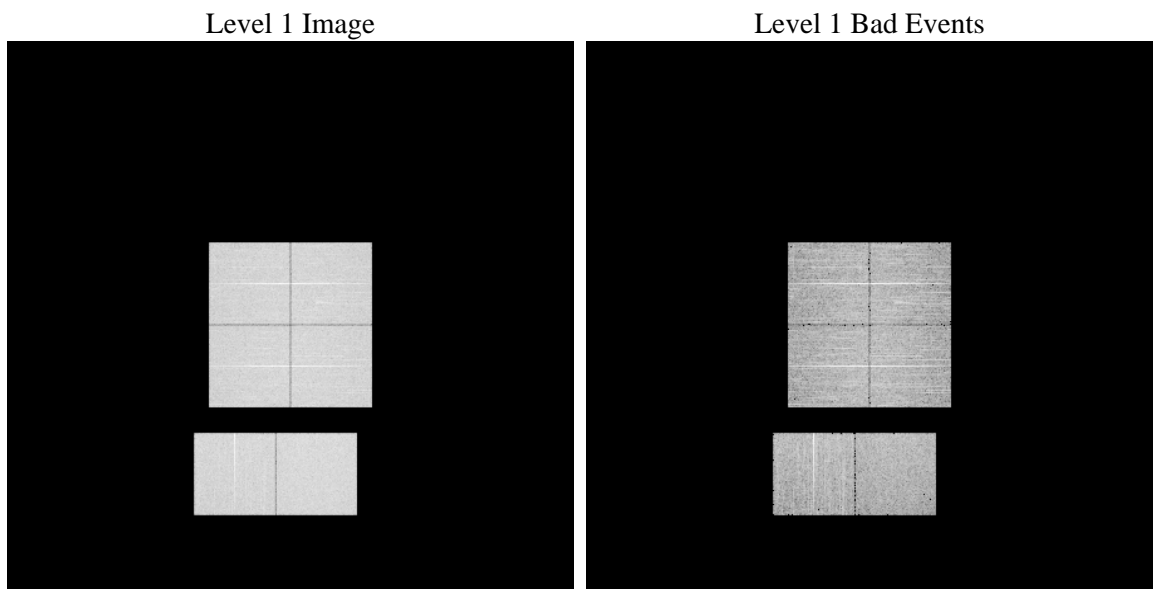
1 Front

seq_num	 	Sequence number
obs_id	59070	Observation id
title	ACIS-012367 diagnostics	Proposal title
observer	CHANDRA engineering request/realtime commanding	Principal investig
object	 	Source name
dtcycle	0	
cycle	P	events from which exps? Prim/Second/Both
ra_targ	0.0	Observer's specified target RA [deg]
dec_targ	0.0	Observer's specified target Dec [deg]
ra_nom	188.86737257882	Nominal RA [deg]
dec_nom	29.904244763902	Nominal Dec [deg]
roll_nom	138.63552365831	Nominal Roll [deg]
revision	2	Processing version of data
ontime	5913.5999779701	Sum of GTIs [s]
livetime	5838.7184143067	Livetime [s]
ontime0	5913.5999779701	Sum of GTIs [s]
ontime1	5913.5999779701	Sum of GTIs [s]
ontime2	5913.5999779701	Sum of GTIs [s]
ontime3	5913.5999779701	Sum of GTIs [s]
ontime6	5913.5999779701	Sum of GTIs [s]
ontime7	5913.5999779701	Sum of GTIs [s]
l2events	691960	Number of level 2 events

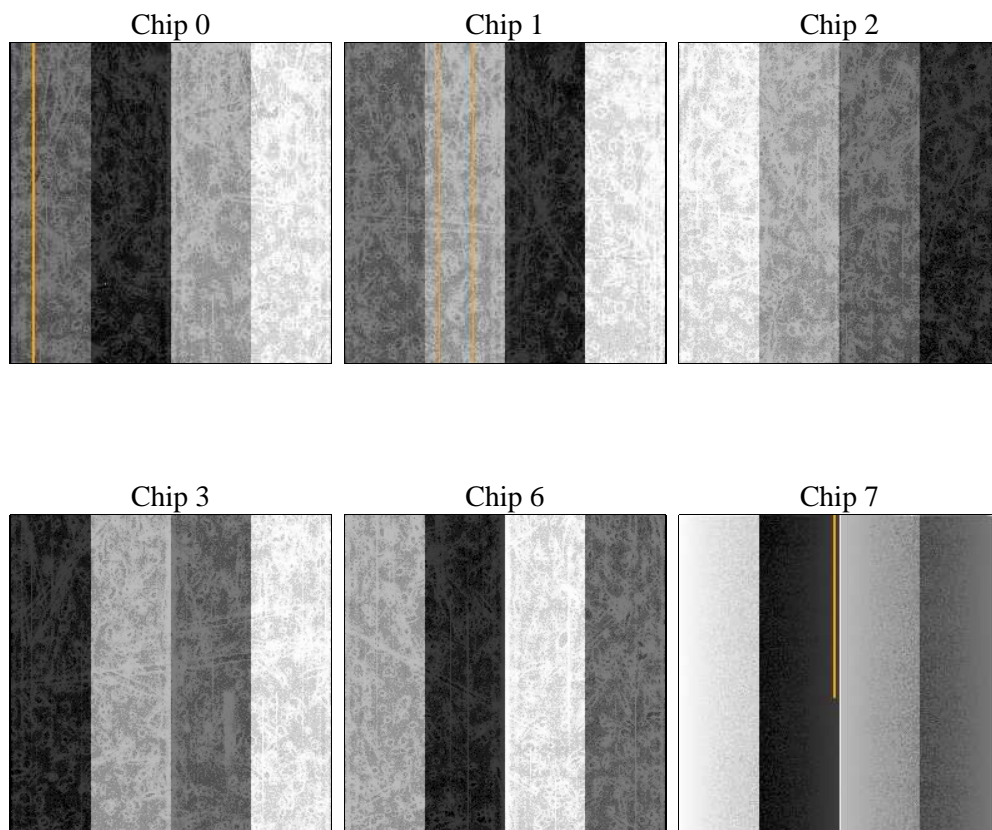
2 OBI

2.1 OBI

2.1.1 Images



2.1.2 Bias



2.1.3 Parameters

obi_num	0	Obi number	sched_exp_time	0.0	[s] Scheduled observation exposure time
ascdsver	8.4.3	Processing system revision	ontime	5913.5999779701	Sum of GTIs [s]
caldsver	4.4.8	 	ontime0	5913.5999779701	Sum of GTIs [s]
date	2012-03-27T06:50:49	Date and time of file creation	ontime1	5913.5999779701	Sum of GTIs [s]
revision	2	Processing version of data	ontime2	5913.5999779701	Sum of GTIs [s]
			ontime3	5913.5999779701	Sum of GTIs [s]
			ontime6	5913.5999779701	Sum of GTIs [s]
			ontime7	5913.5999779701	Sum of GTIs [s]
			l1events	1030207	Number of level 1 events

2.1.4 Events

	ccd 0	ccd 1	ccd 2	ccd 3	ccd 6	ccd 7		ccd 0	ccd 1	ccd 2	ccd 3	ccd 6	ccd 7
level 1 events	165079	165940	169878	170838	173802	184670	grade 0 events	64266	64381	66104	66828	66296	32037
rejected events	49244	49296	52813	53175	52380	44856		38%	38%	38%	39%	38%	17%
rejected %	29%	29%	31%	31%	30%	24%	grade 1 events	433	375	451	476	382	131
								0%	0%	0%	0%	0%	0%
							grade 2 events	20768	21160	19941	20264	21603	30697
								12%	12%	11%	11%	12%	16%
							grade 3 events	7675	7604	7932	7775	7731	13905
								4%	4%	4%	4%	4%	7%
							grade 4 events	7705	7679	7920	7757	7740	14221
								4%	4%	4%	4%	4%	7%
							grade 5 events	2811	2781	2570	3030	3014	7358
								1%	1%	1%	1%	1%	3%
							grade 6 events	17287	17561	16941	16833	19950	51021
								10%	10%	9%	9%	11%	27%
							grade 7 events	44134	44399	48019	47875	47086	35300
								26%	26%	28%	28%	27%	19%

2.2 Compared Parameters

Parameter	Planned	Actual
Instrument	ACIS	ACIS
Detector	ACIS-012367	ACIS-012367
Grating	NONE	NONE
Data mode	FAINT	FAINT
Observation mode	SECONDARY	SECONDARY
[deg] Pointing RA	0	188.8673725788167
[deg] Pointing Dec	0	29.90424476390243
[deg] Pointing Roll	0.0	138.6355236583141
[mm] SIM focus pos	-0.782348	-0.6828225247311905
[mm] SIM defocus	0	0.8505141146731063
[mm] SIM translation stage pos	-233.592463	250.466033080201
[mm] SIM translation stage offset	0	-0.01005468664627074
[s] Observation start time (MET)	258196257.194616	258196256.16961
Observation start date	2006-03-08T09:10:57	2006-03-08T09:10:56
[s] Observation end time (MET)	258217175.395588	258217174.37059
Observation end date	2006-03-08T14:59:35	2006-03-08T14:59:34
Read mode	TIMED	TIMED

Parameter	Planned	Actual
Obspar format version number	7	7
Obspar file type	PREDICTED	ACTUAL
Obspar update status	NONE	UPDATED
On-chip summing requested	N	N
Subarray requested	NONE	NONE
Alternating exposures requested	N	N
[s] Primary exposure time	3.2	3.2

2.3 Star Slots

2.4 FID Slots

A Summary

A.1 Status

V&V Scientist	Jen Lauer
V&V Date (YYYY-MM-DD)	2012.03.27
V&V Edition	1
V&V Disposition and Status	OK
V&V Charge Time	5.9135999779701

A.2 Comments