

V&V Reference Report

L2 ASCDS Version : 8.4.3

Observation 5880 - L2 Version 2
Chandra X-Ray Center

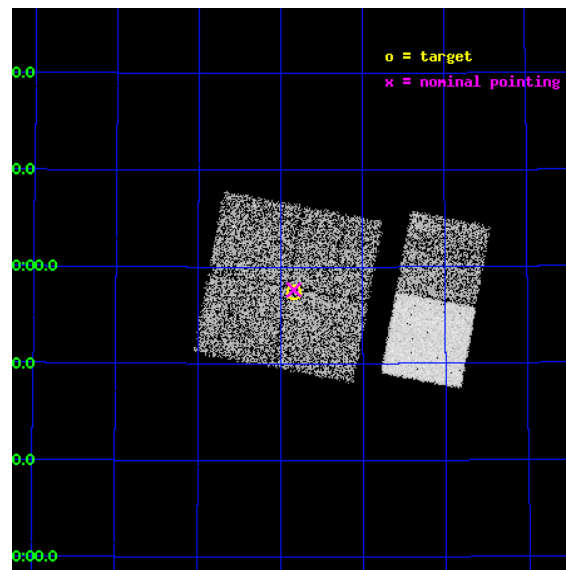
L2 Processing Date : Mar 27 2012

Contents

1	Front	2
2	OBI	3
2.1	OBI	3
2.1.1	Images	3
2.1.2	Bias	3
2.1.3	Parameters	4
2.1.4	Events	4
2.2	Compared Parameters	5
2.3	Aspect	6
2.4	Star Slots	9
2.4.1	Slot 3	9
2.4.2	Slot 4	10
2.4.3	Slot 5	11
2.4.4	Slot 6	12
2.4.5	Slot 7	13
2.5	FID Slots	14
2.5.1	Slot 0	14
2.5.2	Slot 1	15
2.5.3	Slot 2	16
A	Summary	17
A.1	Status	17
A.2	Comments	17

1 Front

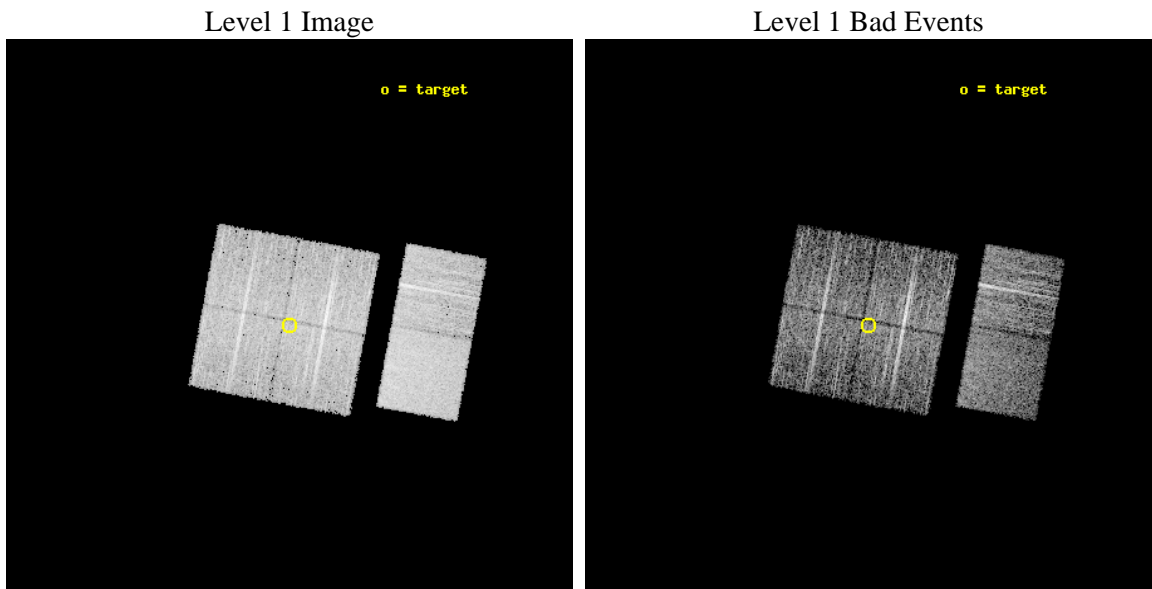
seq_num	900380	Sequence number
obs_id	5880	Observation id
title	The Spectral Energy Distributions of AGN: A Shallow Survey of the ELAIS-N1 Field	Proposal title
observer	Prof Kirpal Nandra	Principal investigator
object	N1_26	Source name
dtcycle	0	
cycle	P	events from which exps? Prim/Second/Both
ra_targ	242.9575	Observer's specified target RA [deg]
dec_targ	54.956194	Observer's specified target Dec [deg]
ra_nom	242.95923087955	Nominal RA [deg]
dec_nom	54.960776646947	Nominal Dec [deg]
roll_nom	100.57255642008	Nominal Roll [deg]
revision	2	Processing version of data
ontime	4652.799982667	Sum of GTIs [s]
livetime	4593.8834277066	Livetime [s]
ontime0	4652.799982667	Sum of GTIs [s]
ontime1	4652.799982667	Sum of GTIs [s]
ontime2	4652.799982667	Sum of GTIs [s]
ontime3	4652.799982667	Sum of GTIs [s]
ontime6	4652.799982667	Sum of GTIs [s]
ontime7	4652.799982667	Sum of GTIs [s]
l2events	43119	Number of level 2 events



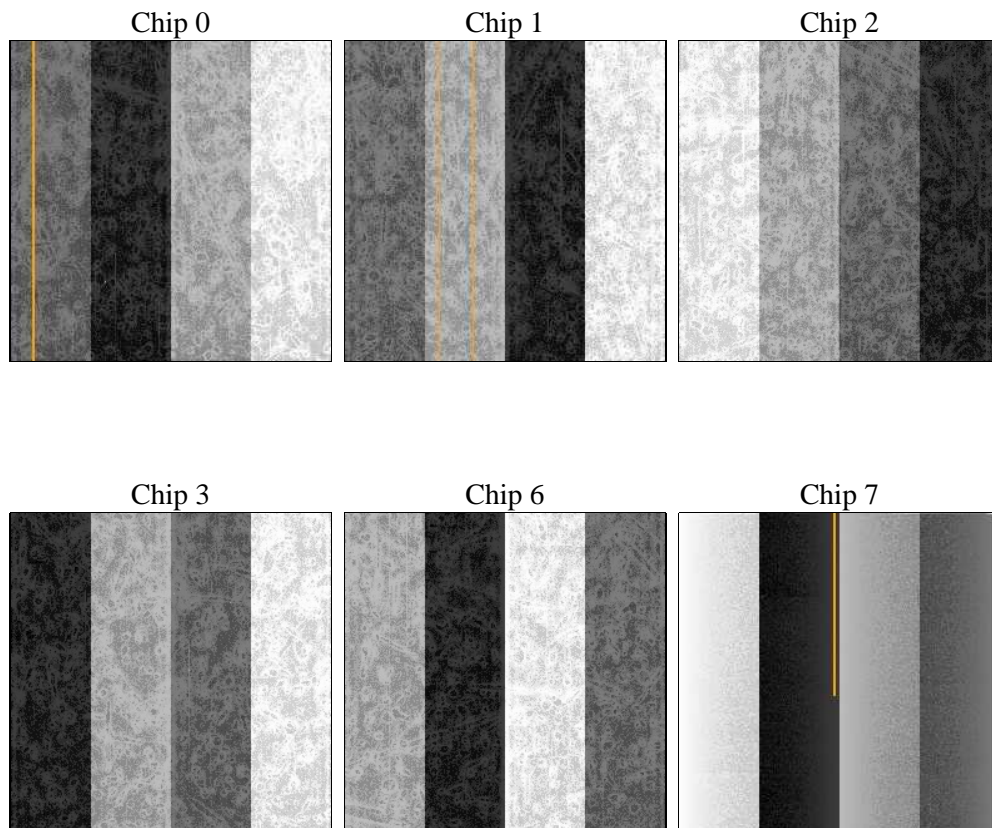
2 OBI

2.1 OBI

2.1.1 Images



2.1.2 Bias



2.1.3 Parameters

obi_num	0	Obi number	sched_exp_time	4900.000000	[s] Scheduled observation exposure time
ascdsver	8.4.3	Processing system revision	ontime	4652.799982667	Sum of GTIs [s]
caldsver	4.4.8	 	ontime0	4652.799982667	Sum of GTIs [s]
date	2012-03-27T05:17:27	Date and time of file creation	ontime1	4652.799982667	Sum of GTIs [s]
revision	2	Processing version of data	ontime2	4652.799982667	Sum of GTIs [s]
			ontime3	4652.799982667	Sum of GTIs [s]
			ontime6	4652.799982667	Sum of GTIs [s]
			ontime7	4652.799982667	Sum of GTIs [s]
			l1events	253797	Number of level 1 events

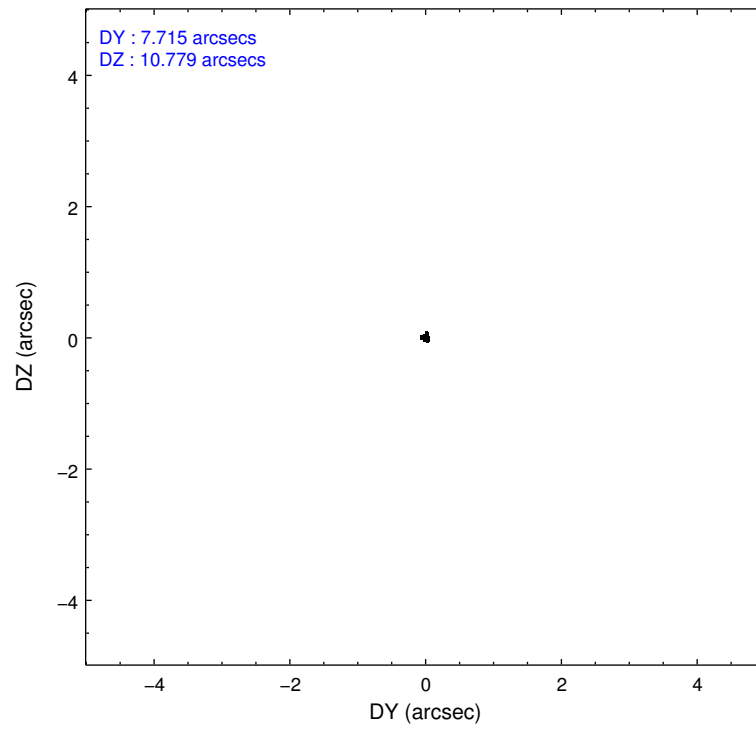
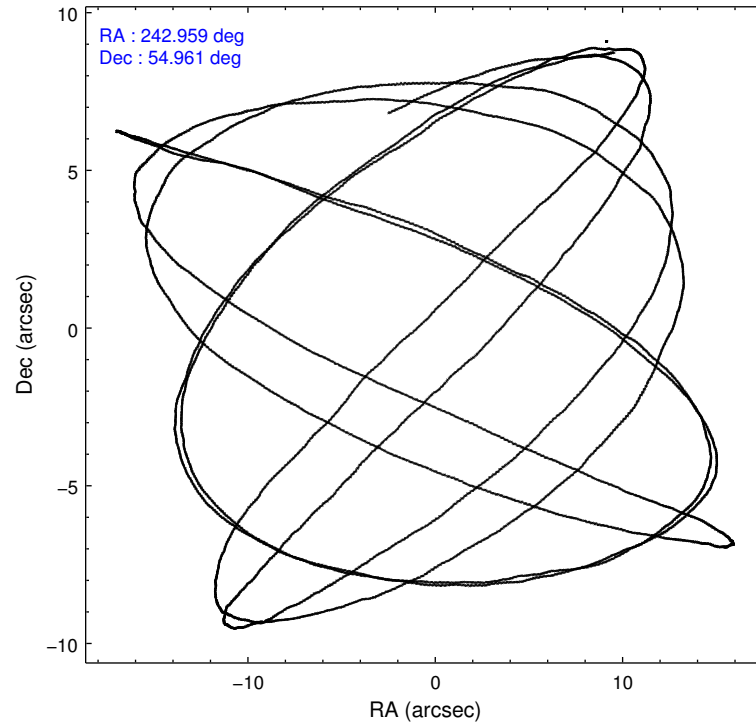
2.1.4 Events

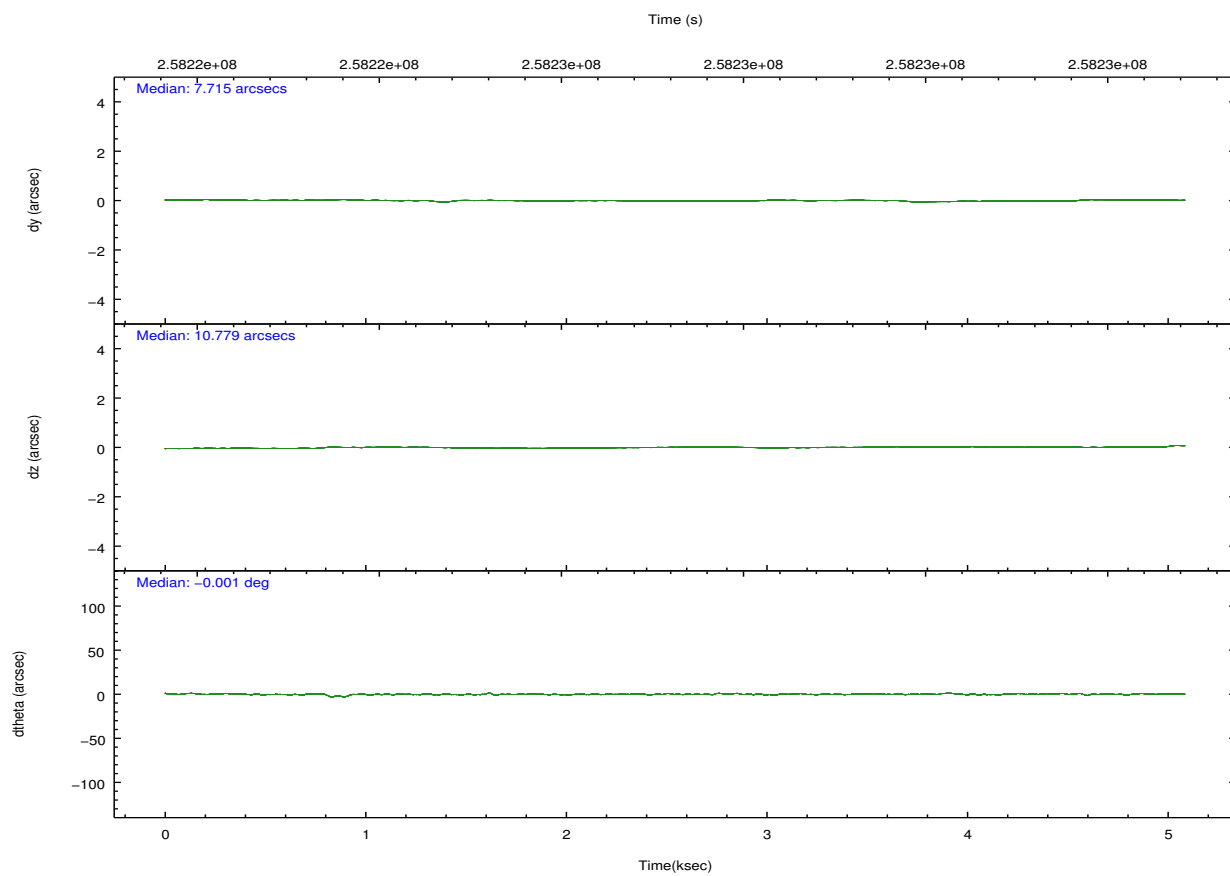
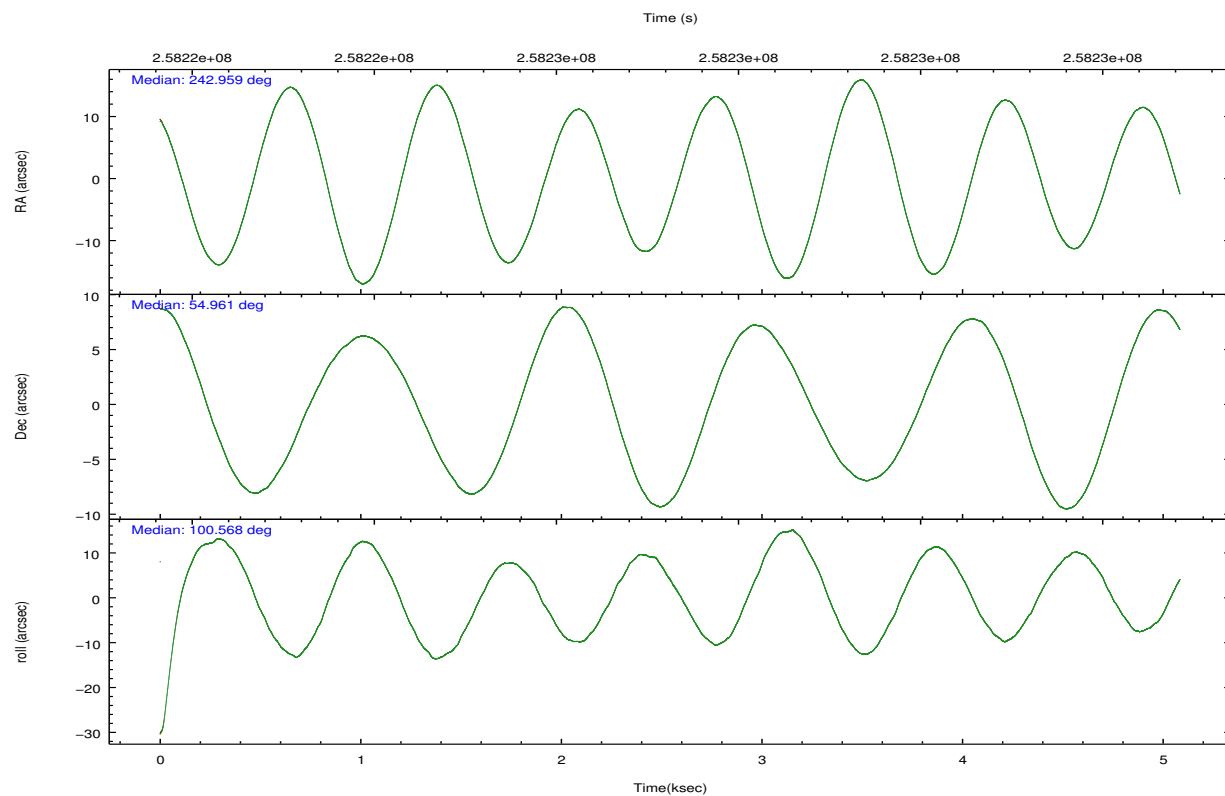
	ccd 0	ccd 1	ccd 2	ccd 3	ccd 6	ccd 7		ccd 0	ccd 1	ccd 2	ccd 3	ccd 6	ccd 7
level 1 events	36931	37734	42669	38739	42715	55009	grade 0 events	2120	1936	2178	2043	1832	2000
rejected events	32001	32667	37823	34021	37896	32302		5%	5%	5%	5%	4%	3%
rejected %	86%	86%	88%	87%	88%	58%	grade 1 events	18	20	30	31	28	50
								0%	0%	0%	0%	0%	0%
							grade 2 events	1023	1153	936	872	1056	4526
								2%	3%	2%	2%	2%	8%
							grade 3 events	527	495	483	492	472	2044
								1%	1%	1%	1%	1%	3%
							grade 4 events	421	491	443	464	476	1957
								1%	1%	1%	1%	1%	3%
							grade 5 events	1618	1723	1493	1860	1922	5154
								4%	4%	3%	4%	4%	9%
							grade 6 events	848	998	807	849	989	12193
								2%	2%	1%	2%	2%	22%
							grade 7 events	30356	30918	36299	32128	35940	27085
								82%	81%	85%	82%	84%	49%

2.2 Compared Parameters

Parameter	Planned	Actual	Parameter	Planned	Actual
Instrument	ACIS	ACIS	Obspar format version number	7	7
Detector	ACIS-012367	ACIS-012367	Obspar file type	PREDICTED	ACTUAL
Grating	NONE	NONE	Obspar update status	NONE	UPDATED
Data mode	VFAINT	VFAINT	Number of optional ACIS chips dropped	0	0
Observation mode	POINTING	POINTING	On-chip summing requested	N	N
[deg] Pointing RA	242.990379	242.9592308795487	Subarray requested	NONE	NONE
[deg] Pointing Dec	54.939990	54.96077664694656	Alternating exposures requested	N	N
[deg] Pointing Roll	100.338429	100.5725564200831	[s] Primary exposure time	0.000000	3.2
[mm] SIM focus pos	-0.782348	-0.7809083437167272			
[mm] SIM defocus	0	0.001439871863259334			
[mm] SIM translation stage pos	-233.592463	-233.5874344608287			
[mm] SIM translation stage offset	0	-0.005018542100998502			
[s] Observation start time (MET)	258224263.184000	258223887.6084			
Observation start date	2006-03-08T16:56:38	2006-03-08T16:51:27			
[s] Observation end time (MET)	258229163.184000	258229297.55865			
Observation end date	2006-03-08T18:18:18	2006-03-08T18:21:37			
Read mode	TIMED	TIMED			

2.3 Aspect



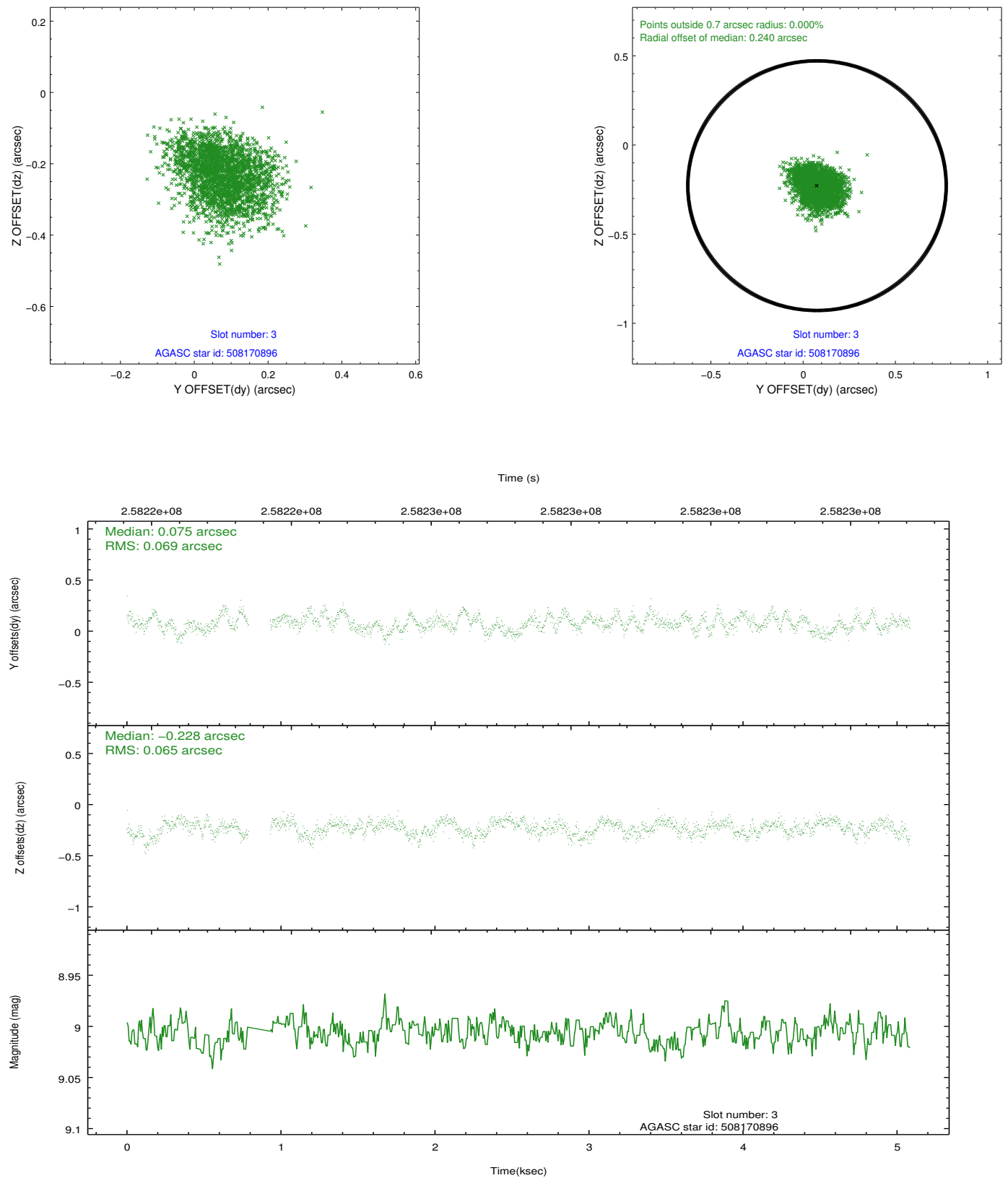


Slot Statistics

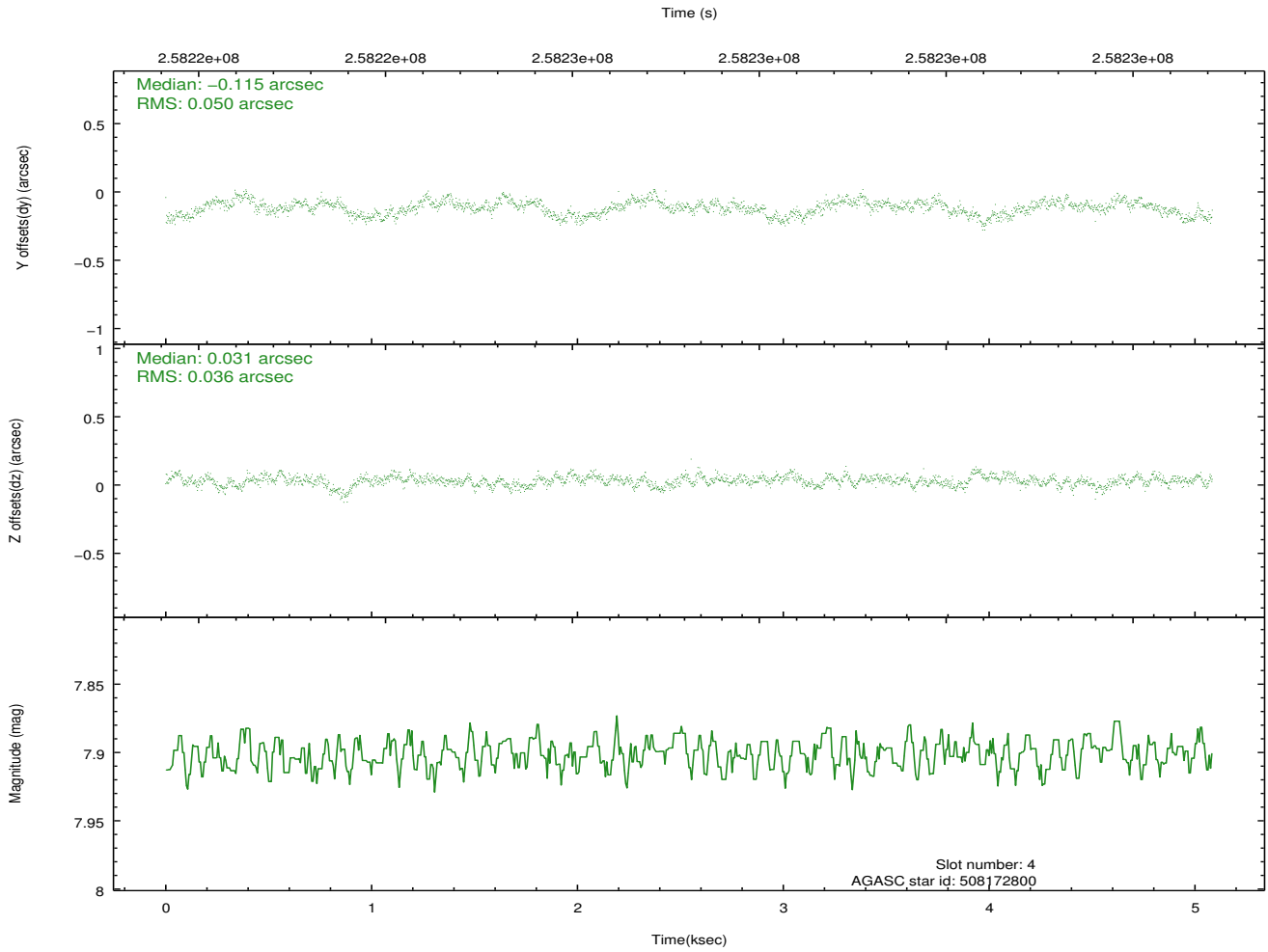
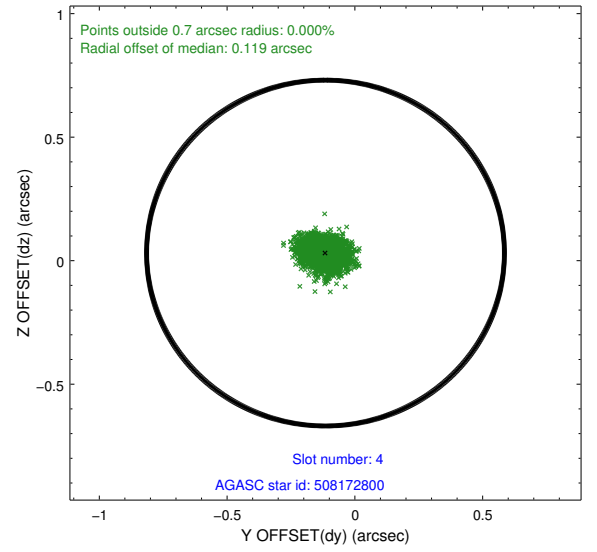
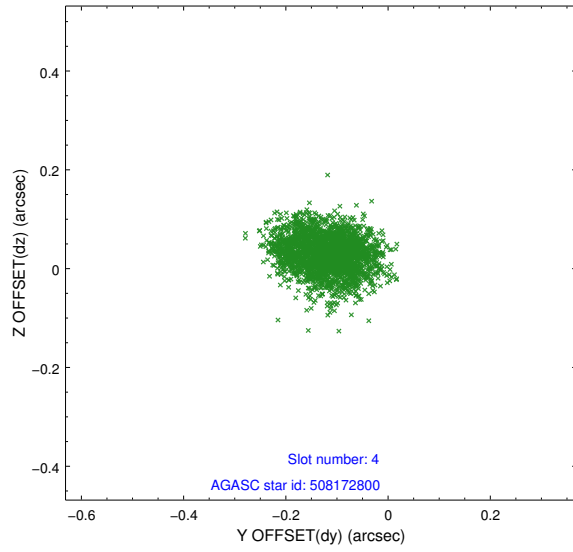
slot	status	id	mag	n_pts	med_dy	med_dz	dr1	dr2	ra	dec	mean_y	mean_z
0	FID	ACIS-I-1	7.24	1241	0.042	-0.034	0.007	0.013	0.000000	0.000000	931.98	-834.31
1	FID	ACIS-I-5	7.23	1240	-0.184	0.049	0.007	0.012	0.000000	0.000000	-1815.66	1062.71
2	FID	ACIS-I-6	7.25	1241	0.051	0.055	0.007	0.014	0.000000	0.000000	396.27	1708.53
3	GUIDE	508170896	9.01	2412	0.075	-0.228	0.102	0.163	242.052968	54.527984	-1094.85	2190.29
4	GUIDE	508172800	7.90	2481	-0.115	0.031	0.067	0.106	242.573753	54.657892	-841.49	1036.36
5	GUIDE	508183040	9.46	2480	0.084	0.086	0.104	0.168	243.957509	54.419234	-2194.29	-1658.48
6	GUIDE	508573872	8.68	2480	0.091	0.051	0.074	0.114	241.738816	55.437101	2240.94	2189.11
7	GUIDE	508574936	9.76	2478	-0.130	0.058	0.137	0.219	243.430611	55.657634	2384.94	-1342.39

2.4 Star Slots

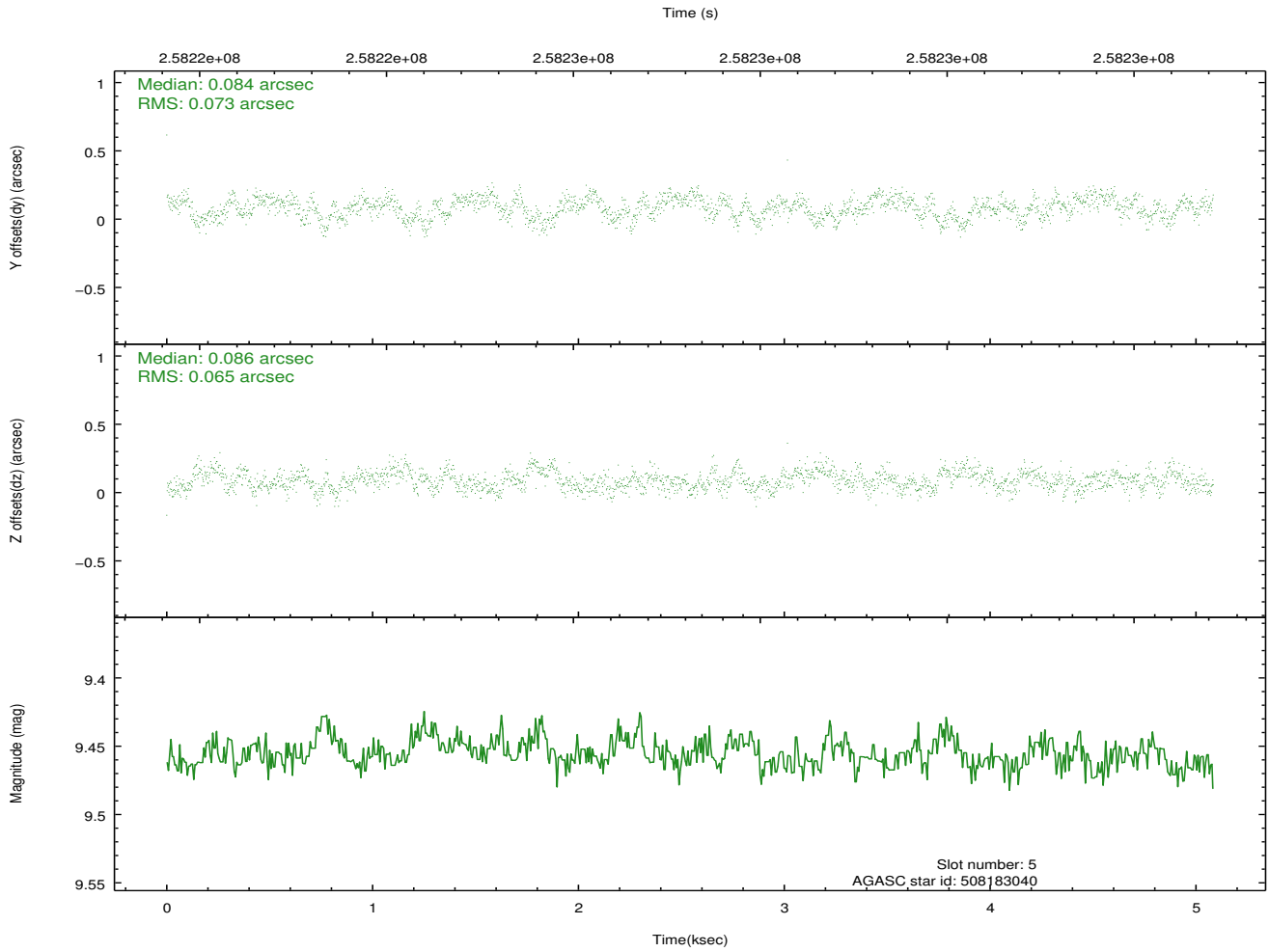
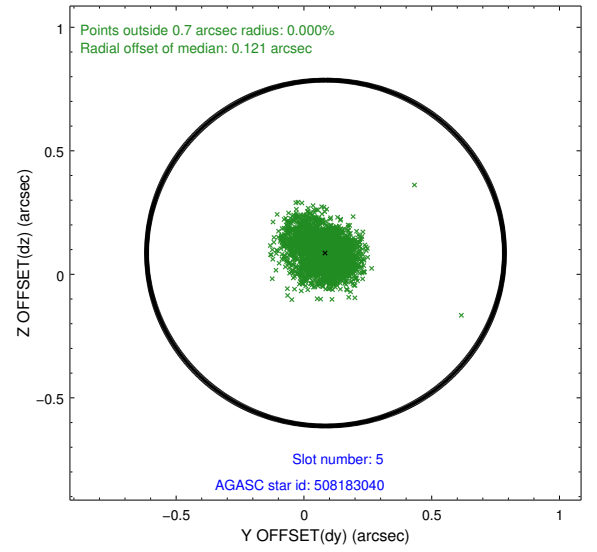
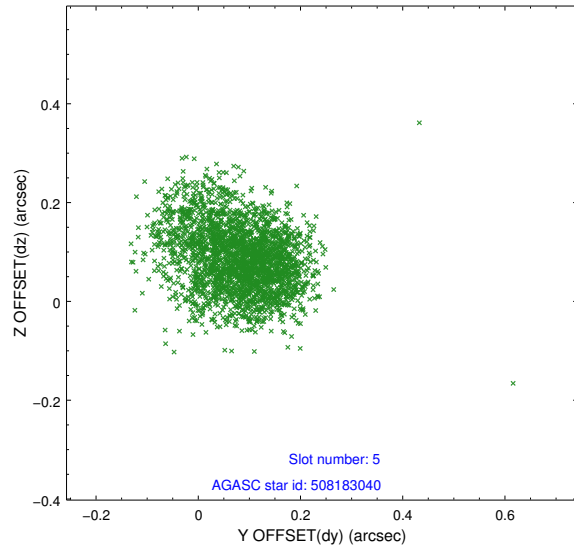
2.4.1 Slot 3



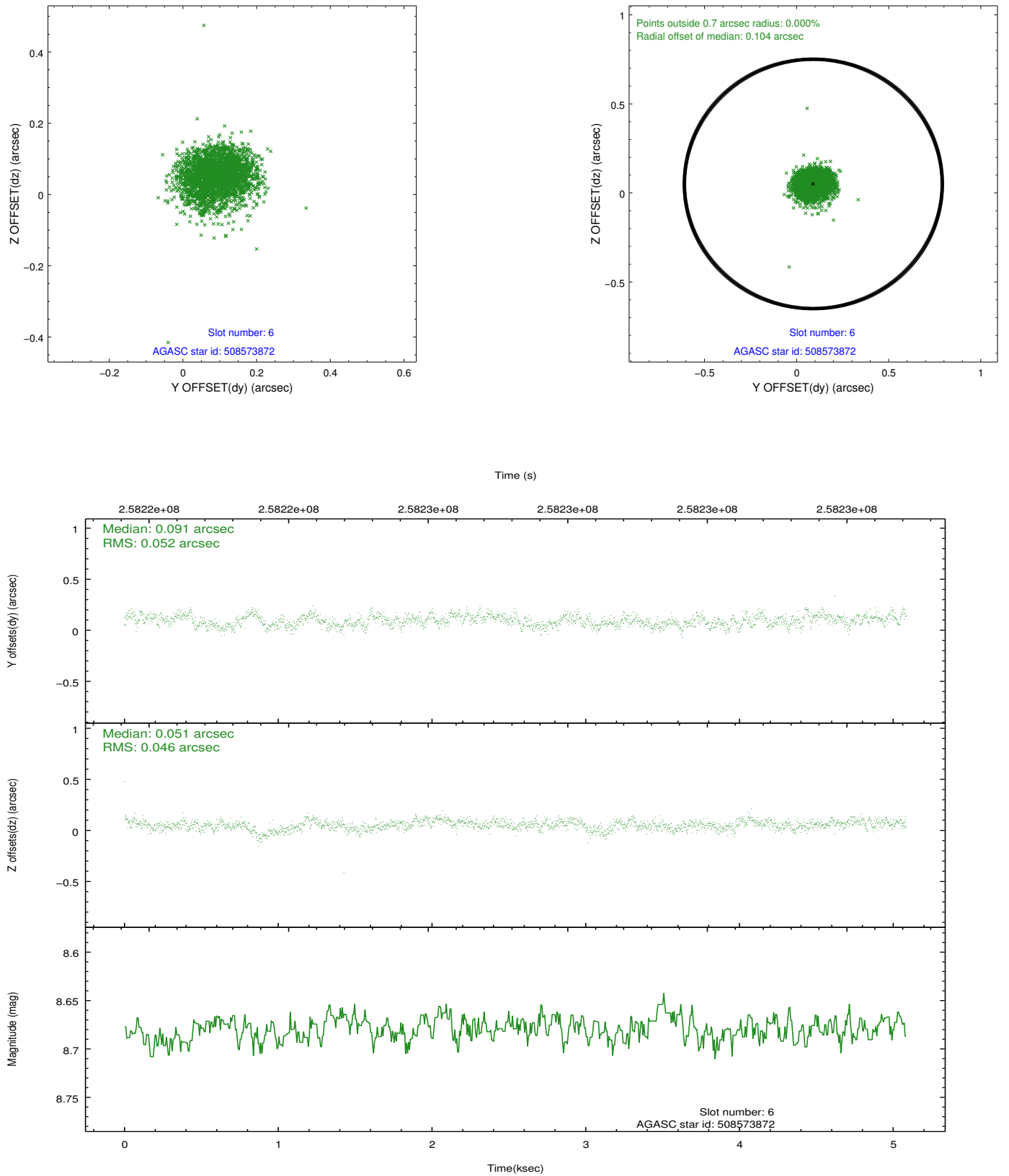
2.4.2 Slot 4



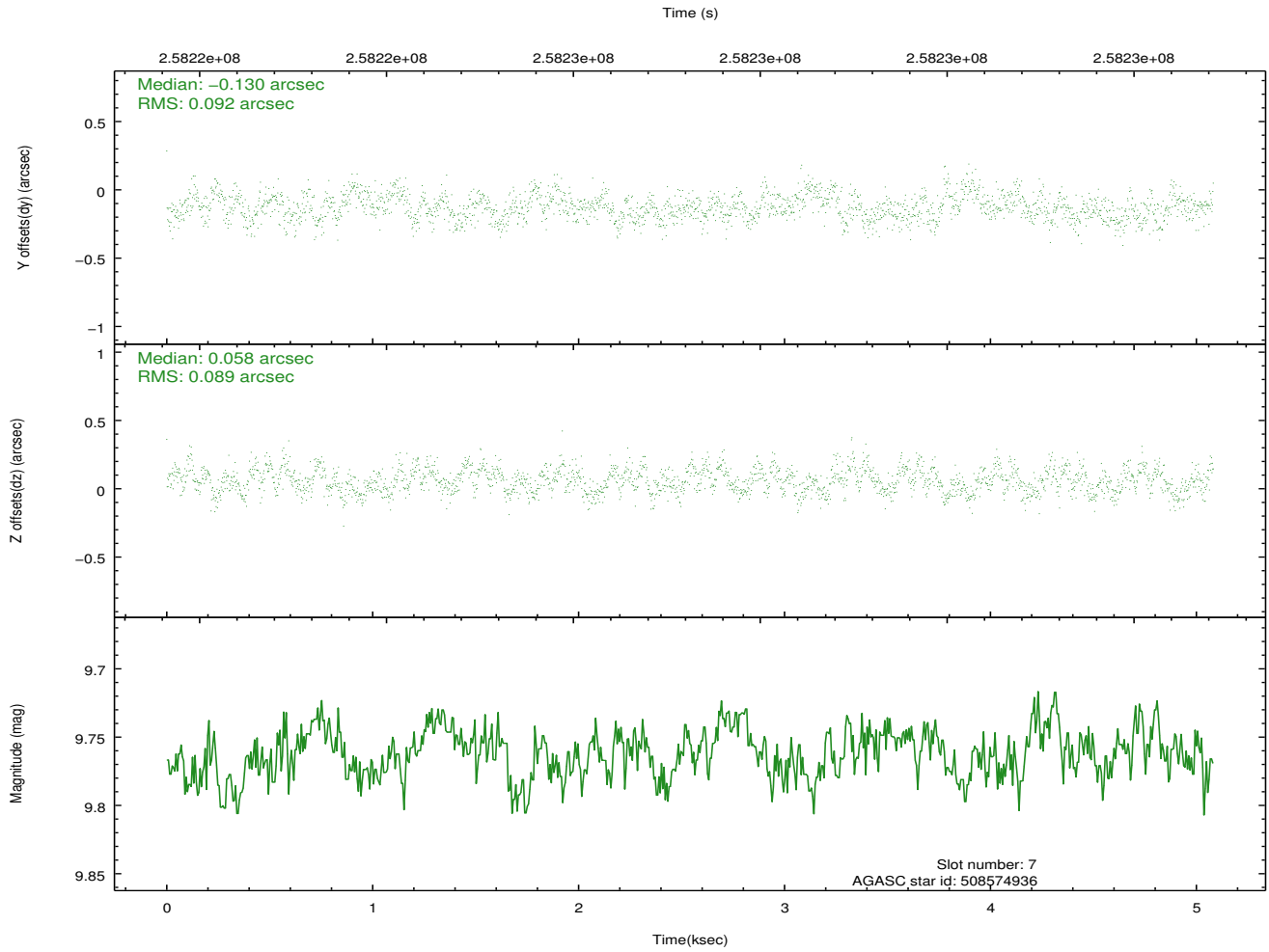
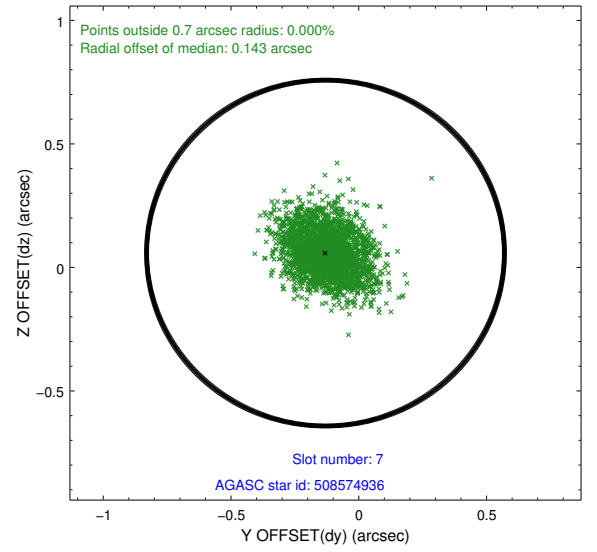
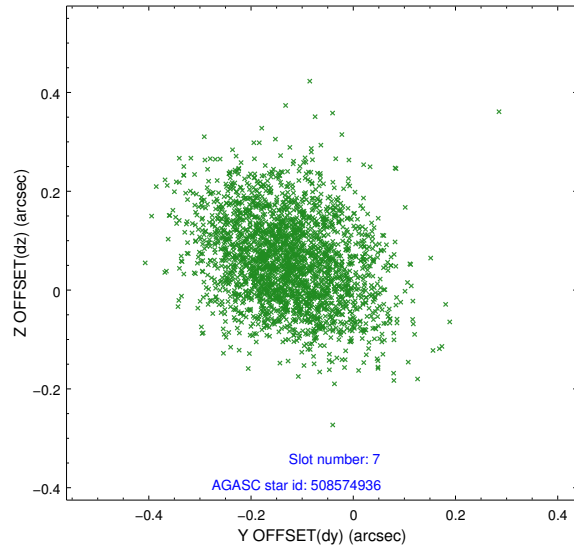
2.4.3 Slot 5



2.4.4 Slot 6

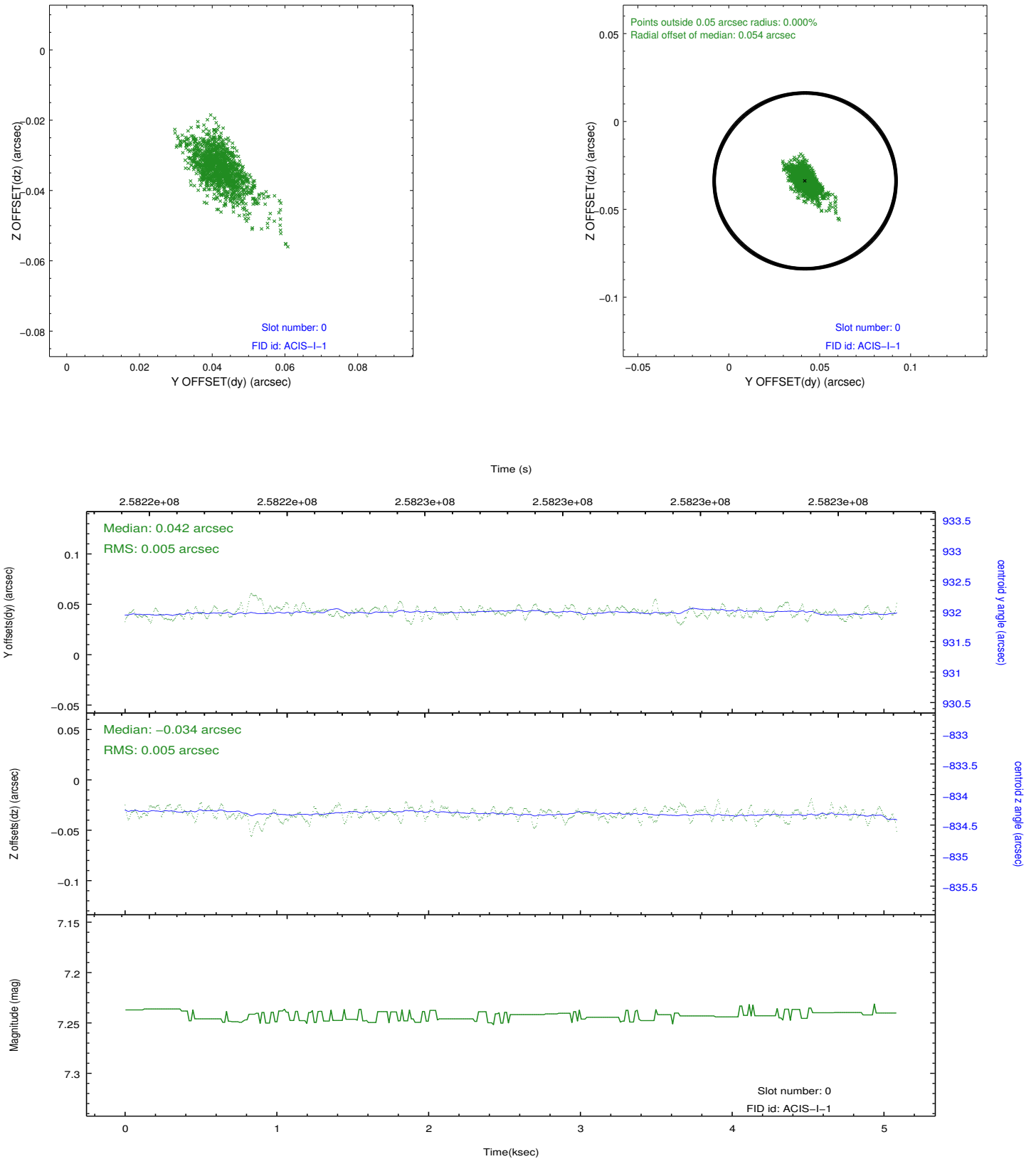


2.4.5 Slot 7

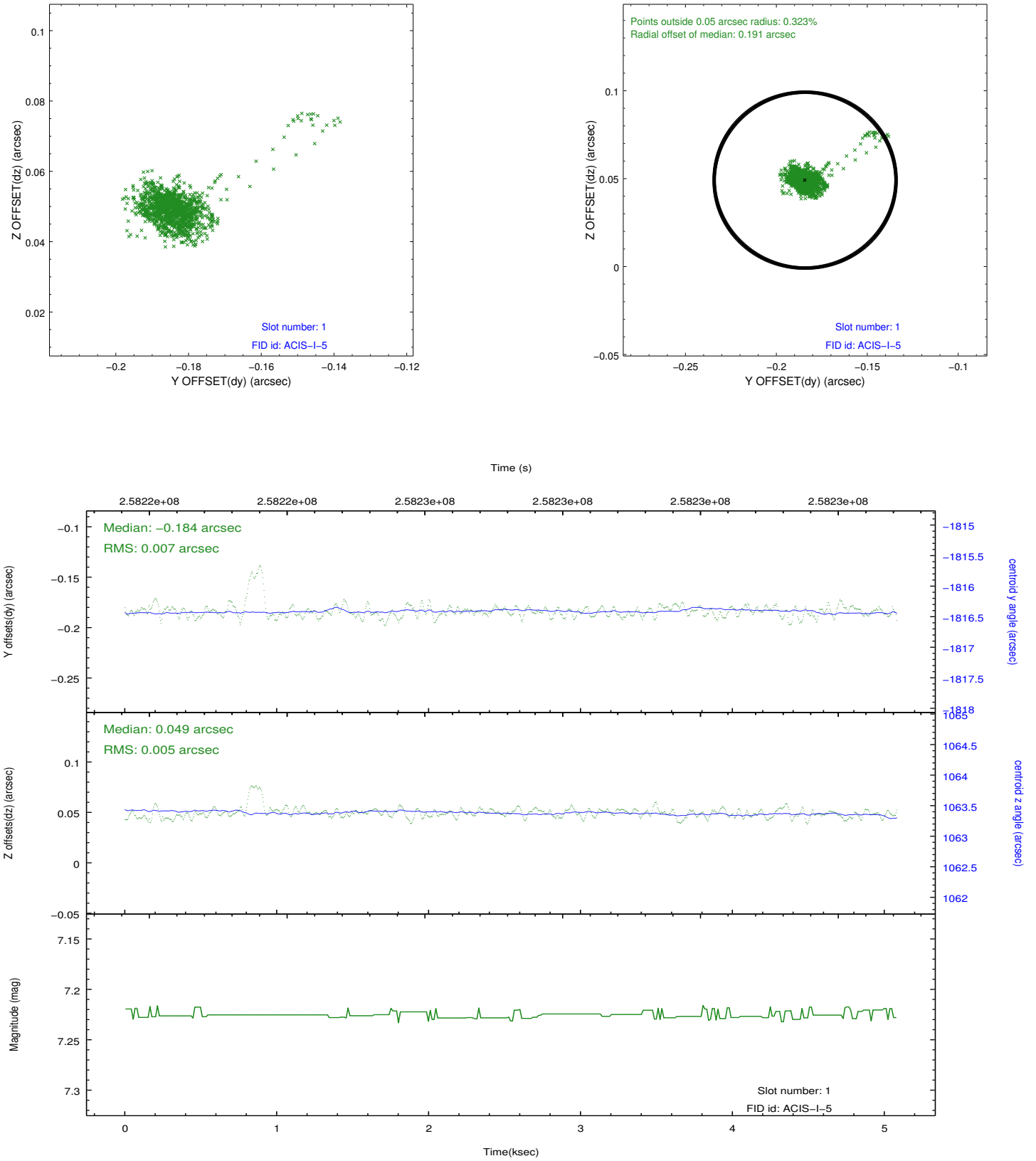


2.5 FID Slots

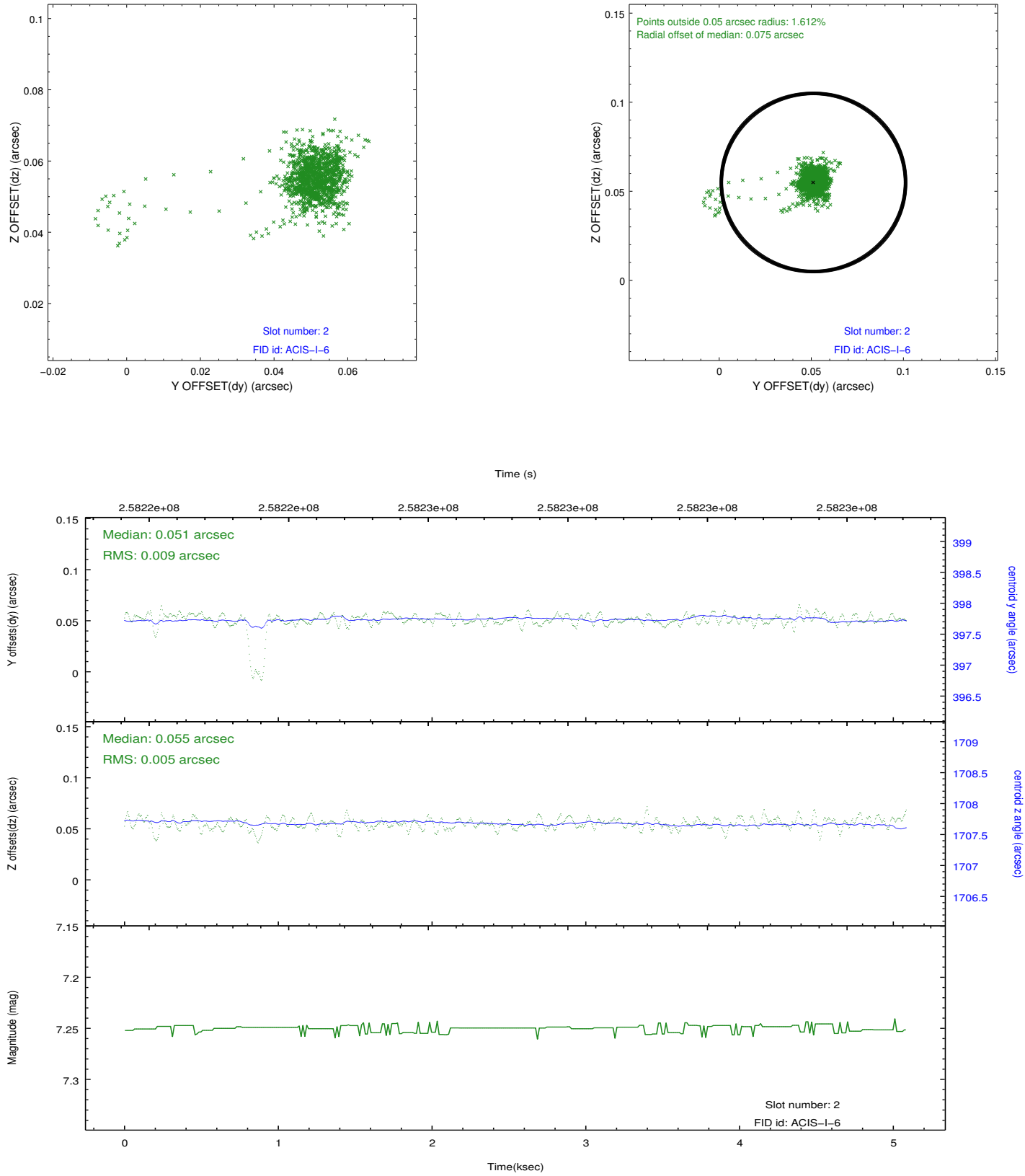
2.5.1 Slot 0



2.5.2 Slot 1



2.5.3 Slot 2



A Summary

A.1 Status

V&V Scientist	Beth Sundheim
V&V Date (YYYY-MM-DD)	2012.03.28
V&V Edition	1
V&V Disposition and Status	OK
V&V Charge Time	4.65279998

A.2 Comments

Joint proposal with NOAO.