

V&V Reference Report

L2 ASCDS Version : 8.4.3.1

Observation 58720 - L2 Version 2
Chandra X-Ray Center

L2 Processing Date : Apr 12 2012

Contents

1	Front	2
2	OBI	3
2.1	OBI	3
2.1.1	Images	3
2.1.2	Bias	3
2.1.3	Parameters	4
2.1.4	Events	4
2.2	Compared Parameters	5
2.3	Star Slots	6
2.4	FID Slots	6
A	Summary	7
A.1	Status	7
A.2	Comments	7

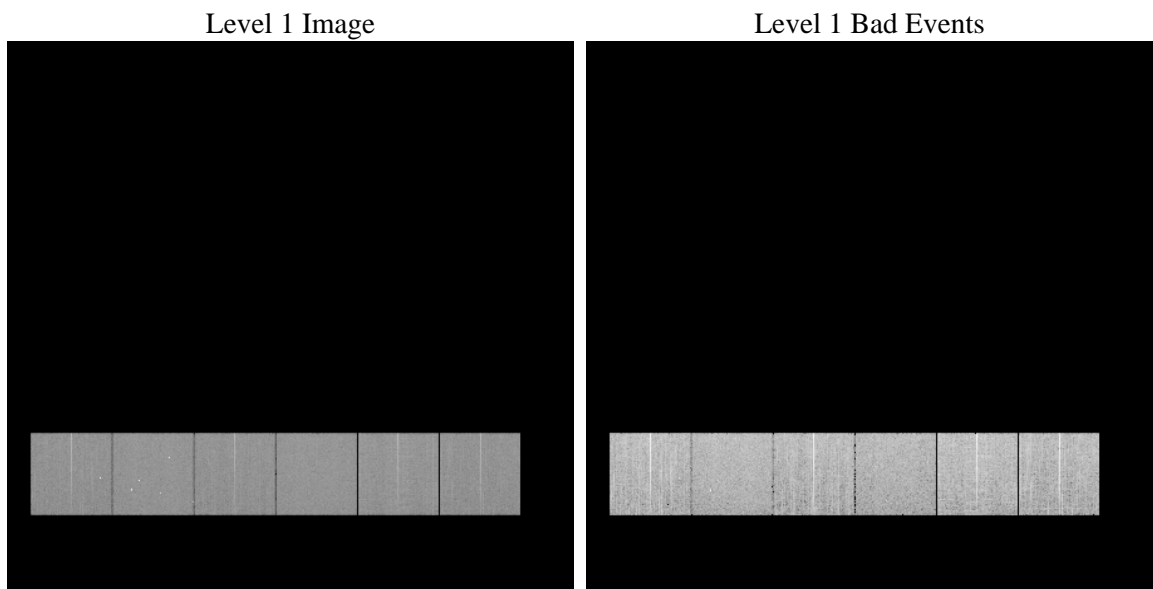
1 Front

seq_num	 	Sequence number
obs_id	58720	Observation id
title	ACIS-456789 diagnostics	Proposal title
observer	CHANDRA engineering request/realtime commanding	Principal investig
object	 	Source name
dtcycle	0	
cycle	P	events from which exps? Prim/Second/Both
ra_targ	0.0	Observer's specified target RA [deg]
dec_targ	0.0	Observer's specified target Dec [deg]
ra_nom	10.529974129724	Nominal RA [deg]
dec_nom	-4.0100096978798	Nominal Dec [deg]
roll_nom	307.65830808642	Nominal Roll [deg]
revision	2	Processing version of data
ontime	7017.599973917	Sum of GTIs [s]
livetime	6928.7388975559	Livetime [s]
ontime4	7017.599973917	Sum of GTIs [s]
ontime5	7017.599973917	Sum of GTIs [s]
ontime6	7017.599973917	Sum of GTIs [s]
ontime7	7017.599973917	Sum of GTIs [s]
ontime8	7017.599973917	Sum of GTIs [s]
ontime9	7017.599973917	Sum of GTIs [s]
l2events	737679	Number of level 2 events

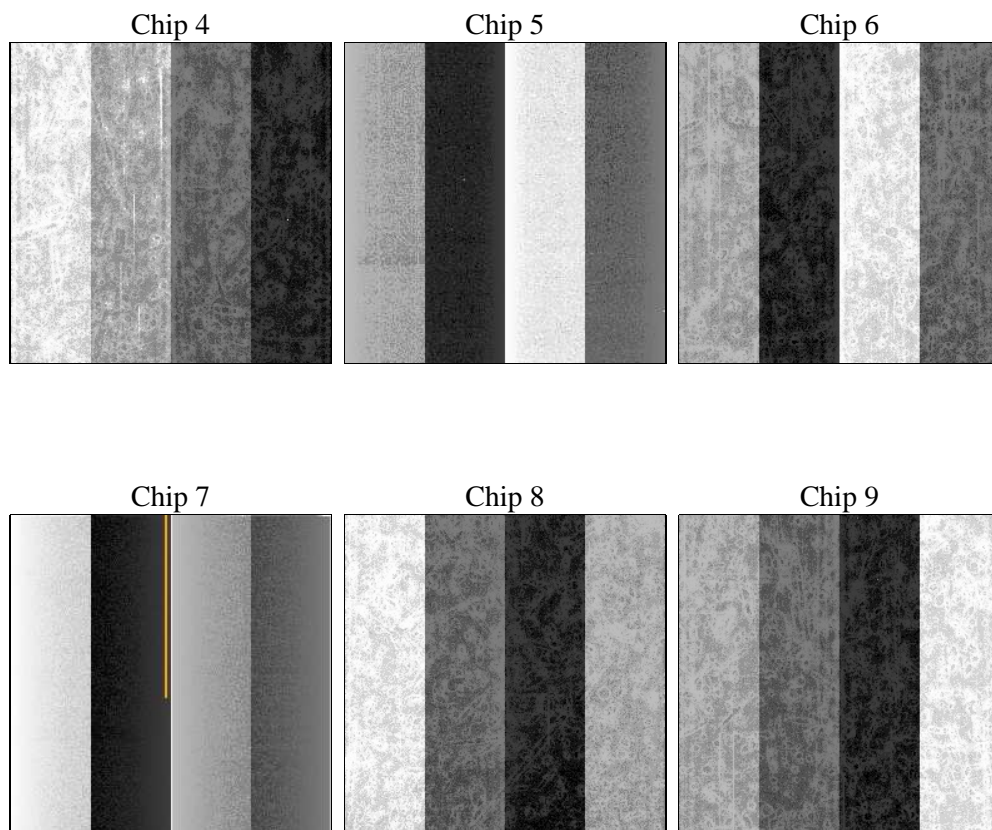
2 OBI

2.1 OBI

2.1.1 Images



2.1.2 Bias



2.1.3 Parameters

obi_num	0	Obi number	sched_exp_time	0.0	[s] Scheduled observation exposure time
ascdsver	8.4.3.1	Processing system revision	ontime	7017.599973917	Sum of GTIs [s]
caldsver	4.4.9	 	ontime4	7017.599973917	Sum of GTIs [s]
date	2012-04-12T11:21:10	Date and time of file creation	ontime5	7017.599973917	Sum of GTIs [s]
revision	2	Processing version of data	ontime6	7017.599973917	Sum of GTIs [s]
			ontime7	7017.599973917	Sum of GTIs [s]
			ontime8	7017.599973917	Sum of GTIs [s]
			ontime9	7017.599973917	Sum of GTIs [s]
			l1events	1181743	Number of level 1 events

2.1.4 Events

	ccd 4	ccd 5	ccd 6	ccd 7	ccd 8	ccd 9		ccd 4	ccd 5	ccd 6	ccd 7	ccd 8	ccd 9
level 1 events	188459	202240	190206	202588	209353	188897	grade 0 events	70032	29707	68980	32796	72594	67545
rejected events	68683	59410	63625	54466	72750	66096		37%	14%	36%	16%	34%	35%
rejected %	36%	29%	33%	26%	34%	34%	grade 1 events	629	194	441	141	472	511
								0%	0%	0%	0%	0%	0%
							grade 2 events	19148	51084	22111	32491	24779	21443
								10%	25%	11%	16%	11%	11%
							grade 3 events	8421	7425	8139	14647	9359	8084
								4%	3%	4%	7%	4%	4%
							grade 4 events	8029	7248	7952	14481	9198	8066
								4%	3%	4%	7%	4%	4%
							grade 5 events	3492	8391	3670	9049	4766	4129
								1%	4%	1%	4%	2%	2%
							grade 6 events	15750	49308	21070	55624	22404	19238
								8%	24%	11%	27%	10%	10%
							grade 7 events	62958	48883	57843	43359	65781	59881
								33%	24%	30%	21%	31%	31%

2.2 Compared Parameters

Parameter	Planned	Actual
Instrument	ACIS	ACIS
Detector	ACIS-456789	ACIS-456789
Grating	NONE	NONE
Data mode	FAINT	FAINT
Observation mode	SECONDARY	SECONDARY
[deg] Pointing RA	0	10.52997412972437
[deg] Pointing Dec	0	-4.010009697879795
[deg] Pointing Roll	0.0	307.6583080864181
[mm] SIM focus pos	-0.684267	-0.7809083437167272
[mm] SIM defocus	0	0.7524282956875696
[mm] SIM translation stage pos	-190.132523	250.466033080201
[mm] SIM translation stage offset	0	-0.01005468664627074
[s] Observation start time (MET)	278529468.096655	278529467.07165
Observation start date	2006-10-29T17:17:48	2006-10-29T17:17:47
[s] Observation end time (MET)	278551476.897695	278551475.87269
Observation end date	2006-10-29T23:24:37	2006-10-29T23:24:35
Read mode	TIMED	TIMED

Parameter	Planned	Actual
Obspar format version number	7	7
Obspar file type	PREDICTED	ACTUAL
Obspar update status	NONE	UPDATED
On-chip summing requested	N	N
Subarray requested	NONE	NONE
Alternating exposures requested	N	N
[s] Primary exposure time	3.2	3.2

2.3 Star Slots

2.4 FID Slots

A Summary

A.1 Status

V&V Scientist	Jen Lauer
V&V Date (YYYY-MM-DD)	2012.04.12
V&V Edition	1
V&V Disposition and Status	OK
V&V Charge Time	7.017599973917

A.2 Comments