

V&V Reference Report

L2 ASCDS Version : 8.4.3.1

Observation 5860 - L2 Version 2
Chandra X-Ray Center

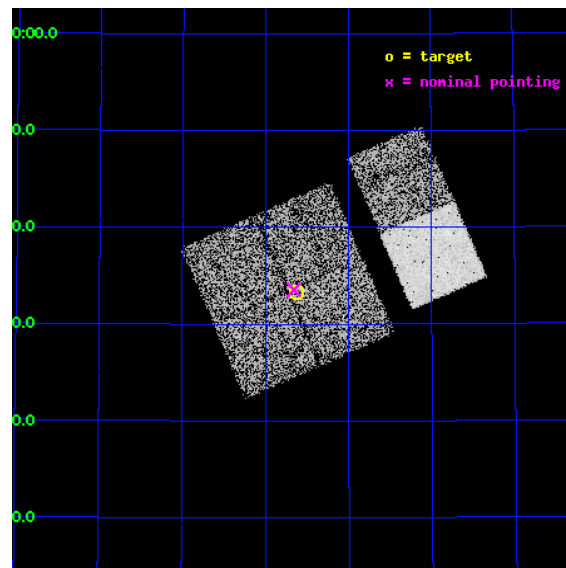
L2 Processing Date : Mar 24 2012

Contents

1	Front	2
2	OBI	3
2.1	OBI	3
2.1.1	Images	3
2.1.2	Bias	3
2.1.3	Parameters	4
2.1.4	Events	4
2.2	Compared Parameters	5
2.3	Aspect	6
2.4	Star Slots	9
2.4.1	Slot 3	9
2.4.2	Slot 4	10
2.4.3	Slot 5	11
2.4.4	Slot 6	12
2.4.5	Slot 7	13
2.5	FID Slots	14
2.5.1	Slot 0	14
2.5.2	Slot 1	15
2.5.3	Slot 2	16
A	Summary	17
A.1	Status	17
A.2	Comments	17

1 Front

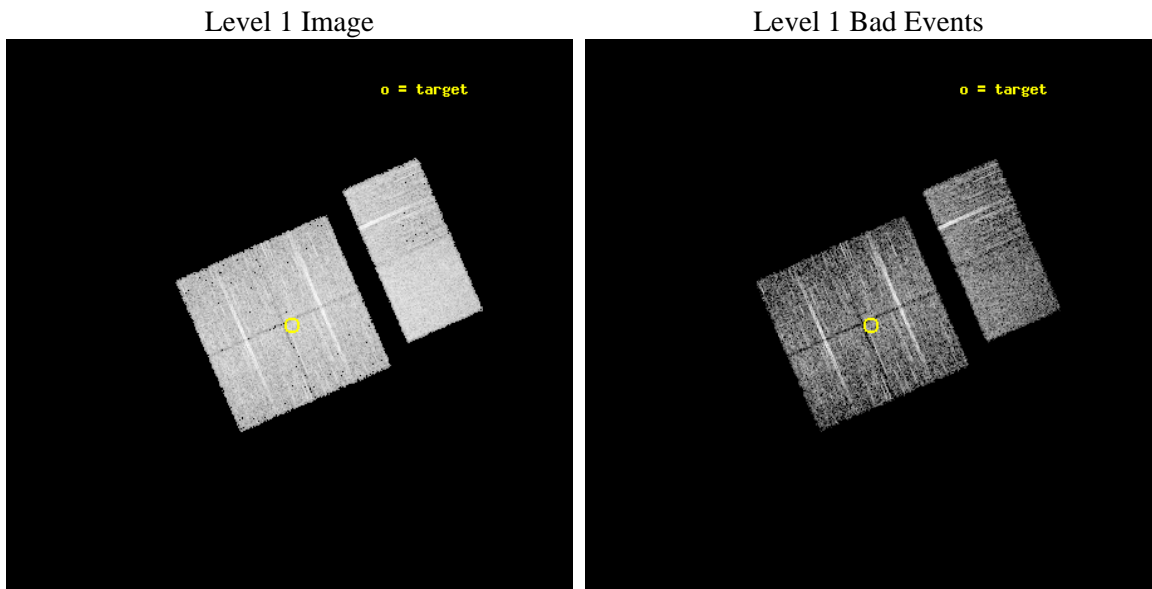
seq_num	900360	Sequence number
obs_id	5860	Observation id
title	The Spectral Energy Distributions of AGN: A Shallow Survey of the ELAIS-N1 Field	Proposal title
observer	Prof Kirpal Nandra	Principal investigator
object	N1_06	Source name
dtcycle	0	
cycle	P	events from which exps? Prim/Second/Both
ra_targ	241.90875	Observer's specified target RA [deg]
dec_targ	54.556194	Observer's specified target Dec [deg]
ra_nom	241.91455003535	Nominal RA [deg]
dec_nom	54.559407290694	Nominal Dec [deg]
roll_nom	66.481026047376	Nominal Roll [deg]
revision	2	Processing version of data
ontime	4553.5999830365	Sum of GTIs [s]
livetime	4495.9395582026	Livetime [s]
ontime0	4553.5290164649	Sum of GTIs [s]
ontime1	4553.5700564384	Sum of GTIs [s]
ontime2	4553.5999830365	Sum of GTIs [s]
ontime3	4553.5999830365	Sum of GTIs [s]
ontime6	4553.5999830365	Sum of GTIs [s]
ontime7	4553.5999830365	Sum of GTIs [s]
l2events	40885	Number of level 2 events



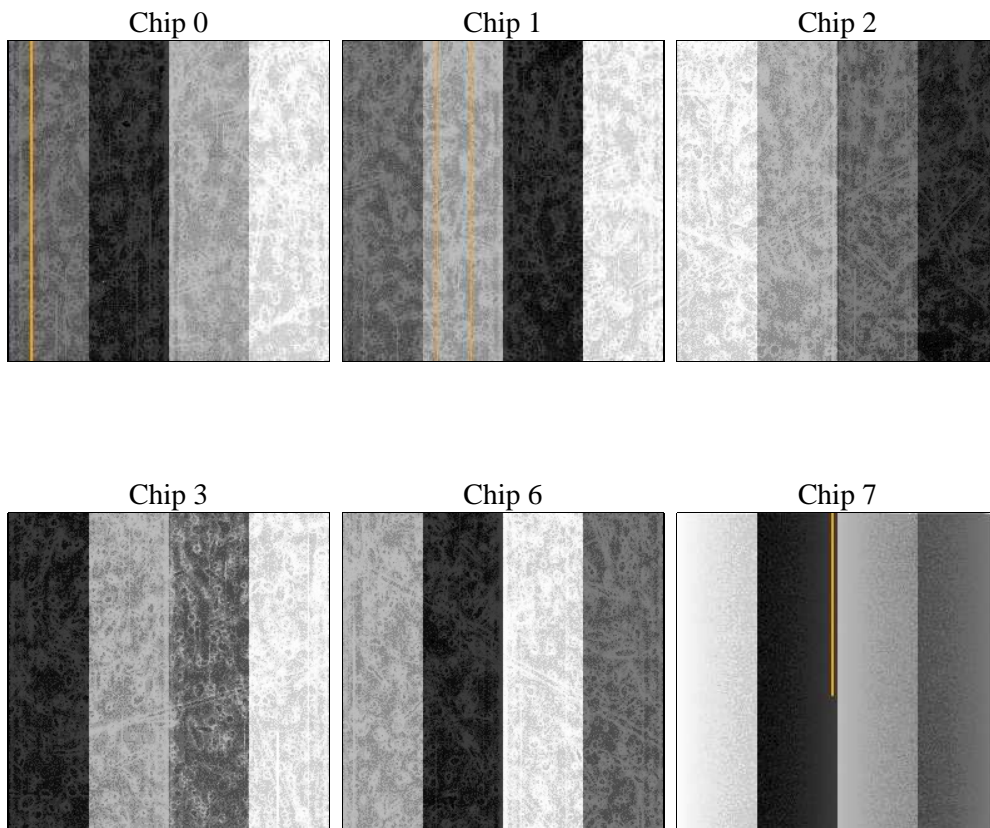
2 OBI

2.1 OBI

2.1.1 Images



2.1.2 Bias



2.1.3 Parameters

obi_num	0	Obi number	sched_exp_time	4800.000000	[s] Scheduled observation exposure time
ascdsver	8.4.3	Processing system revision	ontime	4553.5999830365	Sum of GTIs [s]
caldsver	4.4.8	 	ontime0	4553.5290164649	Sum of GTIs [s]
date	2012-03-24T23:27:10	Date and time of file creation	ontime1	4553.5700564384	Sum of GTIs [s]
revision	2	Processing version of data	ontime2	4553.5999830365	Sum of GTIs [s]
			ontime3	4553.5999830365	Sum of GTIs [s]
			ontime6	4553.5999830365	Sum of GTIs [s]
			ontime7	4553.5999830365	Sum of GTIs [s]
			l1events	233934	Number of level 1 events

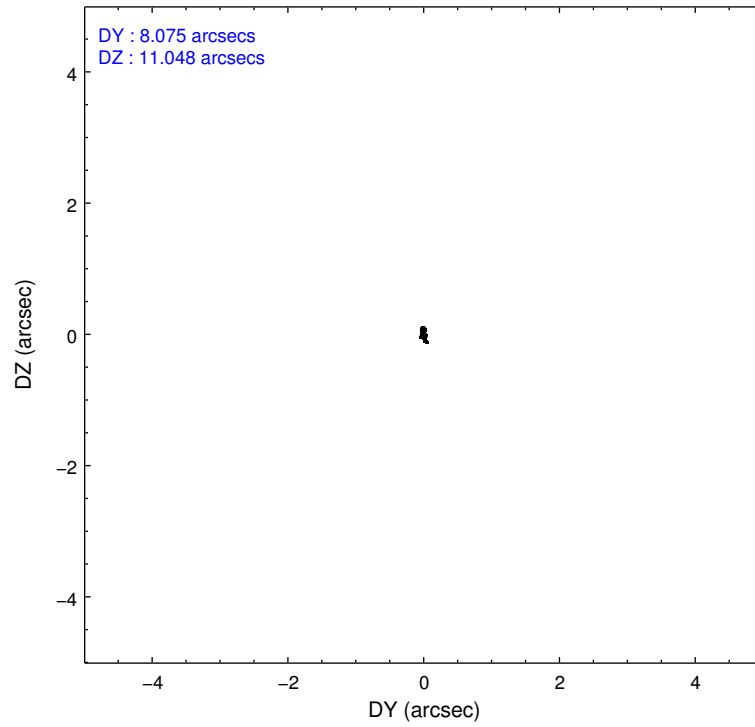
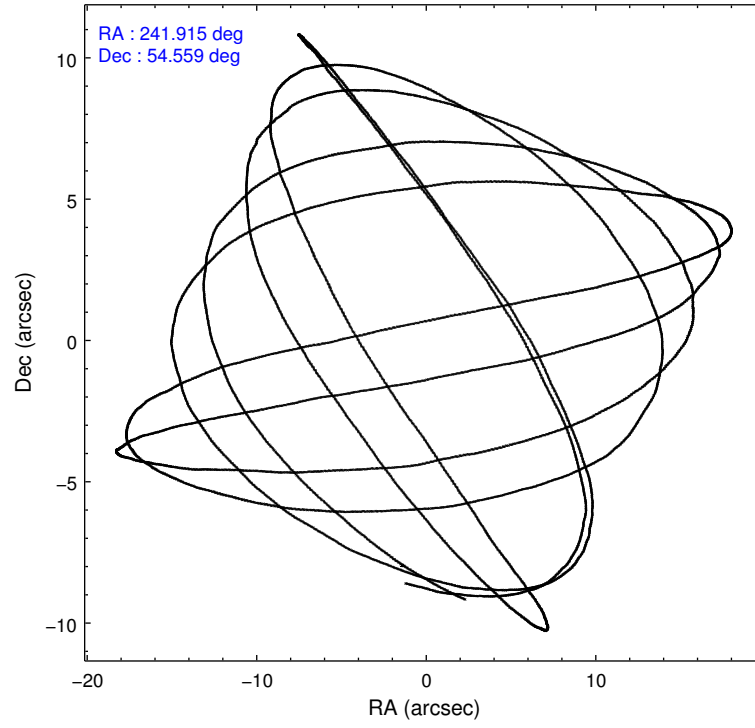
2.1.4 Events

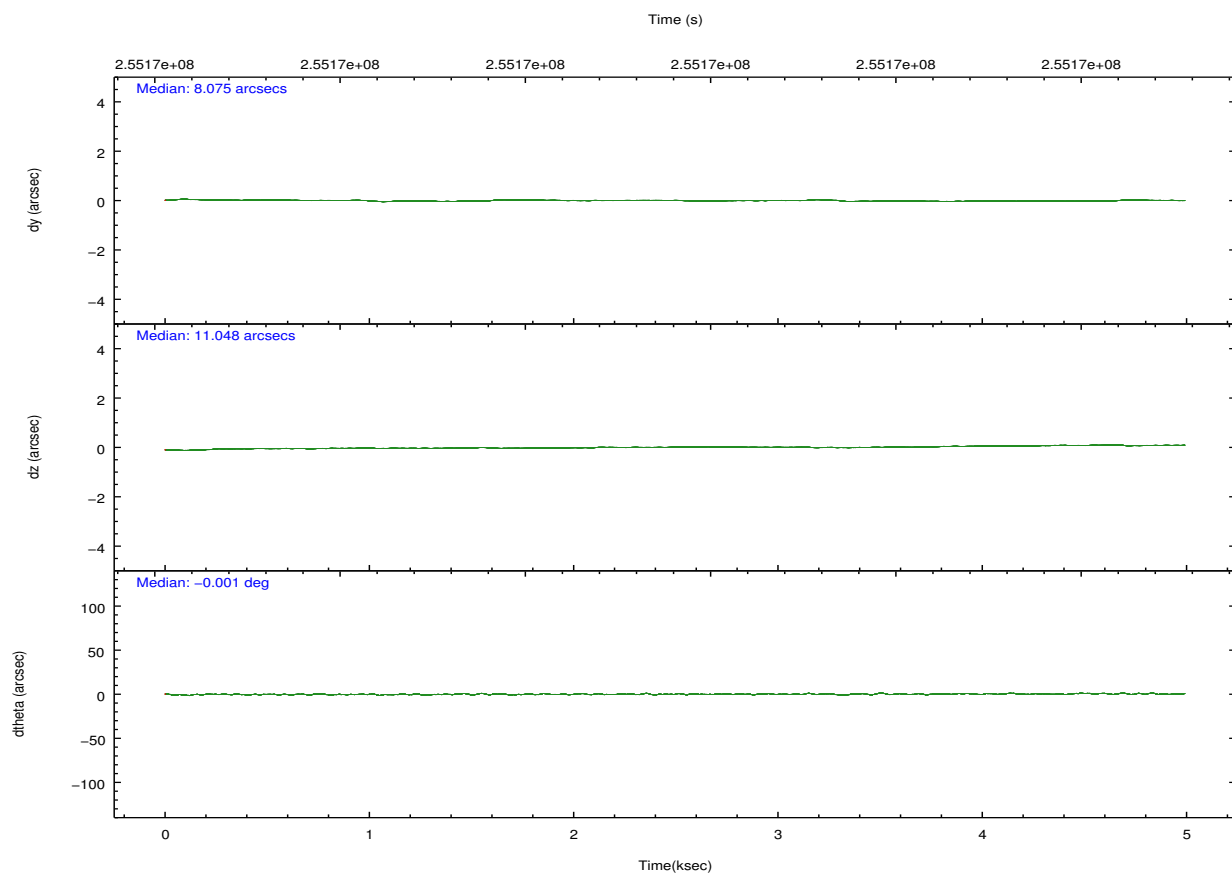
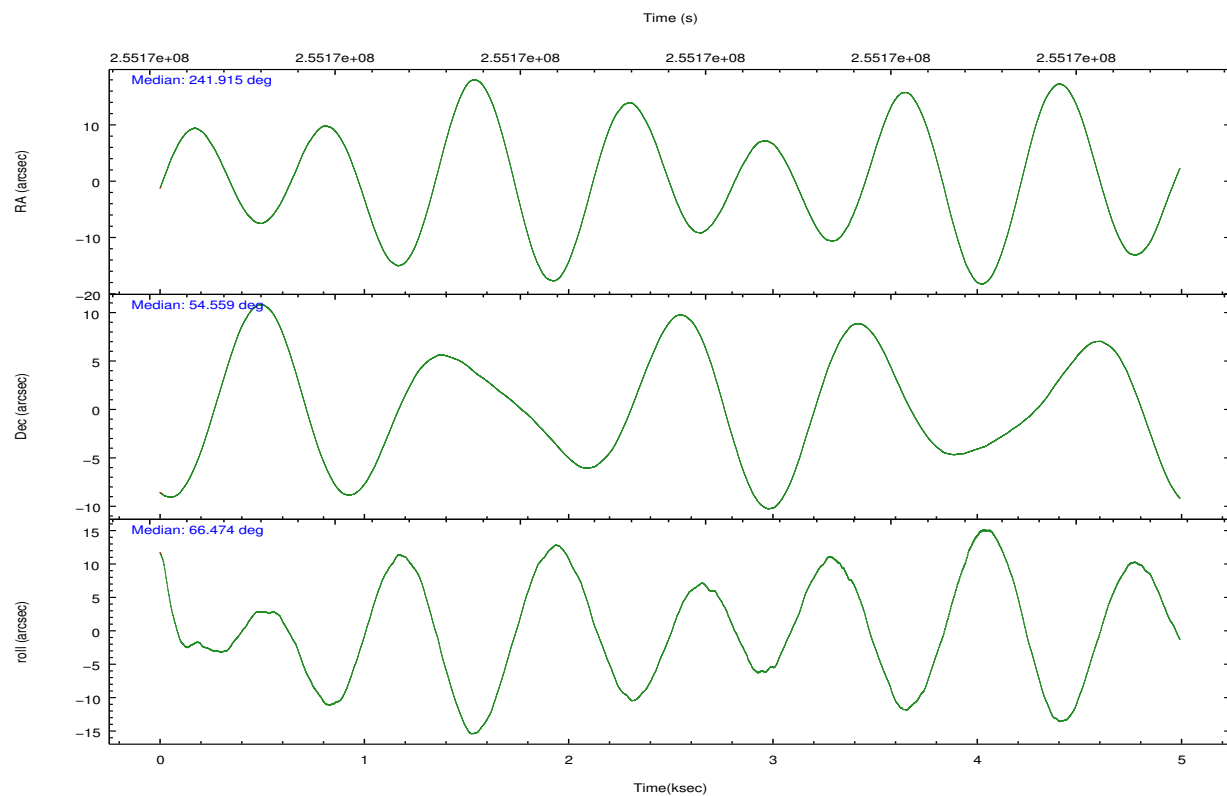
	ccd 0	ccd 1	ccd 2	ccd 3	ccd 6	ccd 7		ccd 0	ccd 1	ccd 2	ccd 3	ccd 6	ccd 7
level 1 events	33895	34288	38011	36495	39386	51859	grade 0 events	1912	1773	2065	1946	1716	2014
rejected events	29273	29609	33536	31966	34824	30170		5%	5%	5%	5%	4%	3%
rejected %	86%	86%	88%	87%	88%	58%	grade 1 events	21	15	18	23	14	44
								0%	0%	0%	0%	0%	0%
							grade 2 events	978	1062	877	888	992	4290
								2%	3%	2%	2%	2%	8%
							grade 3 events	450	469	439	446	440	1855
								1%	1%	1%	1%	1%	3%
							grade 4 events	425	437	411	464	430	1868
								1%	1%	1%	1%	1%	3%
							grade 5 events	1462	1648	1443	1729	1797	4831
								4%	4%	3%	4%	4%	9%
							grade 6 events	863	947	692	798	993	11703
								2%	2%	1%	2%	2%	22%
							grade 7 events	27784	27937	32066	30201	33004	25254
								81%	81%	84%	82%	83%	48%

2.2 Compared Parameters

Parameter	Planned	Actual	Parameter	Planned	Actual
Instrument	ACIS	ACIS	Obspar format version number	7	7
Detector	ACIS-012367	ACIS-012367	Obspar file type	PREDICTED	ACTUAL
Grating	NONE	NONE	Obspar update status	NONE	UPDATED
Data mode	VFAINT	VFAINT	Number of optional ACIS chips dropped	0	0
Observation mode	POINTING	POINTING	On-chip summing requested	N	N
[deg] Pointing RA	241.920063	241.9145500353525	Subarray requested	NONE	NONE
[deg] Pointing Dec	54.532192	54.55940729069385	Alternating exposures requested	N	N
[deg] Pointing Roll	66.267853	66.48102604737574	[s] Primary exposure time	0.000000	3.2
[mm] SIM focus pos	-0.782348	-0.7809083437167272			
[mm] SIM defocus	0	0.001439871863259334			
[mm] SIM translation stage pos	-233.592463	-233.5874344608287			
[mm] SIM translation stage offset	0	-0.005018542100998502			
[s] Observation start time (MET)	255167503.184000	255167127.3414			
Observation start date	2006-02-01T07:50:38	2006-02-01T07:45:27			
[s] Observation end time (MET)	255172303.184000	255172437.86664			
Observation end date	2006-02-01T09:10:38	2006-02-01T09:13:57			
Read mode	TIMED	TIMED			

2.3 Aspect



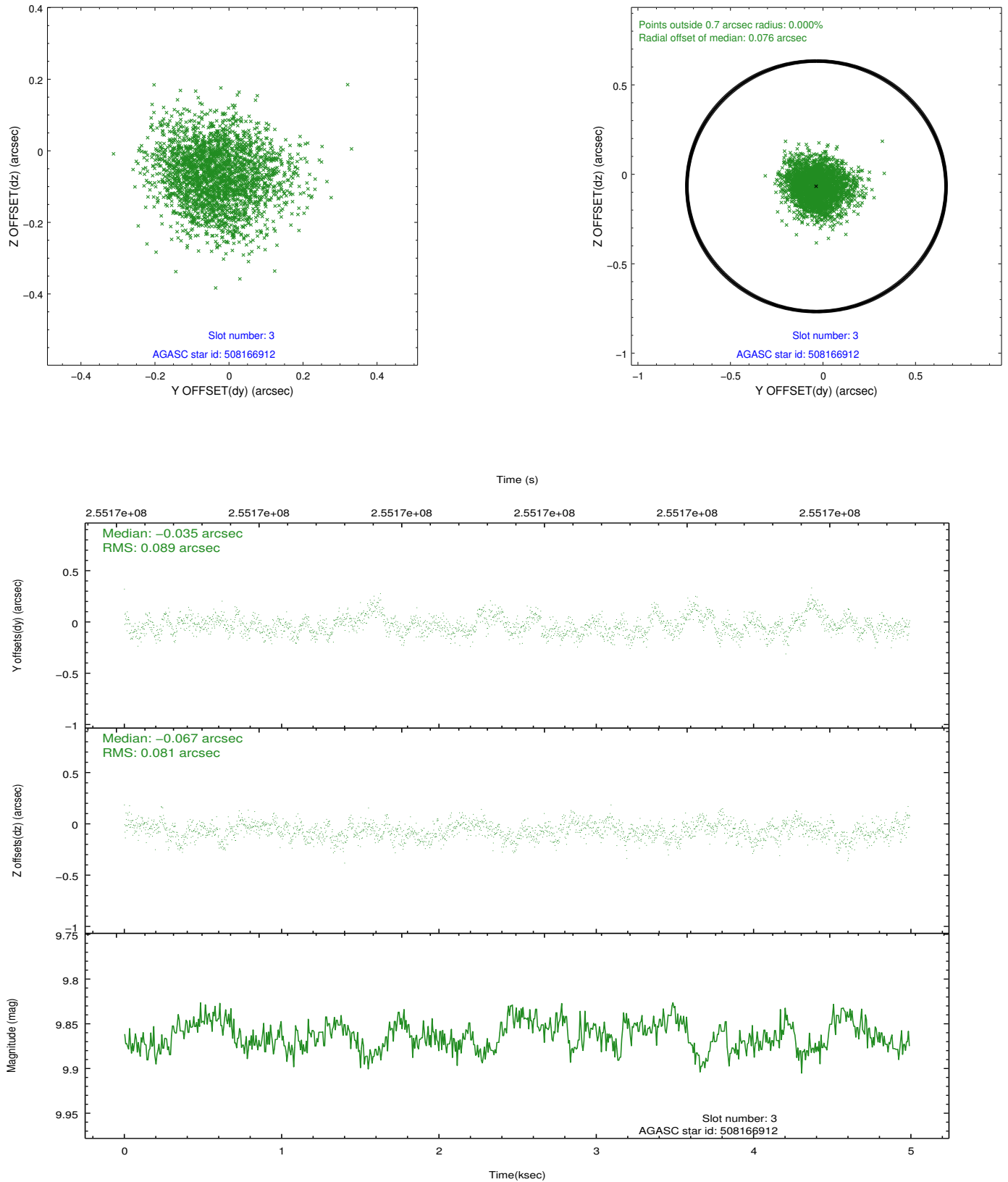


Slot Statistics

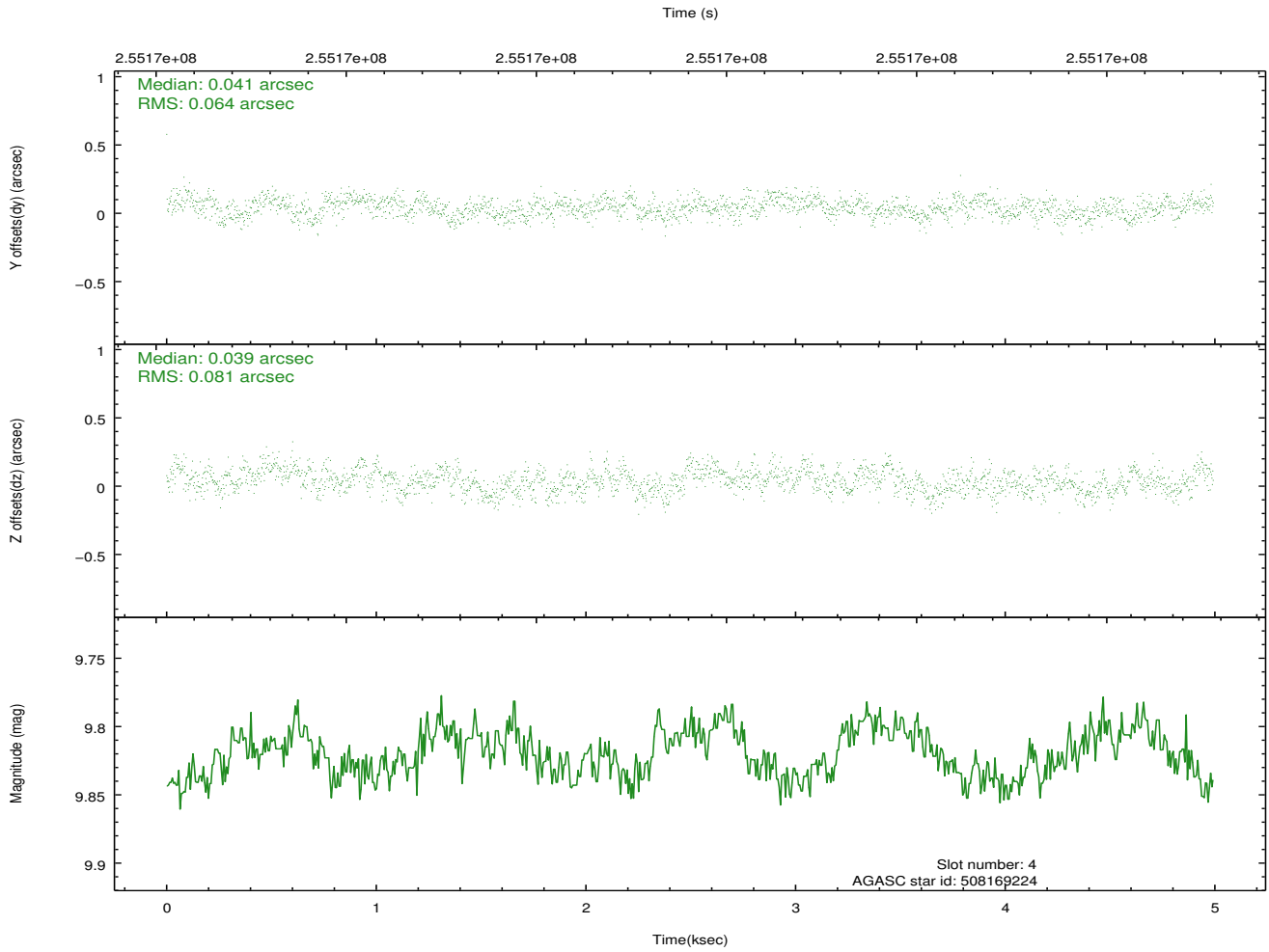
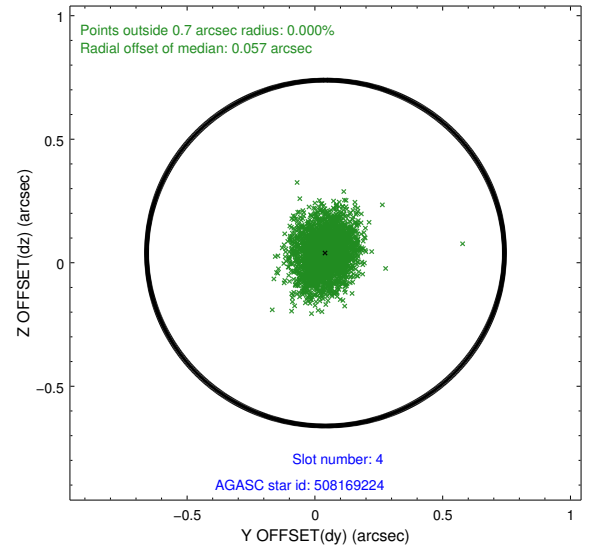
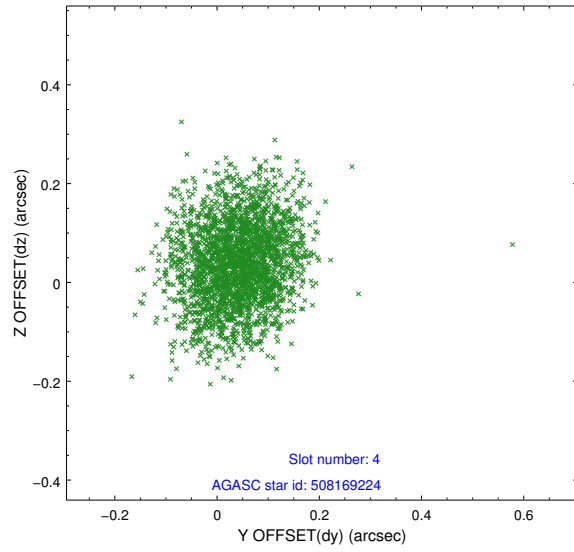
slot	status	id	mag	n_pts	med_dy	med_dz	dr1	dr2	ra	dec	mean_y	mean_z
0	FID	ACIS-I-1	7.25	1218	0.056	-0.039	0.006	0.010	0.000000	0.000000	931.63	-834.59
1	FID	ACIS-I-5	7.23	1218	-0.160	0.071	0.007	0.011	0.000000	0.000000	-1816.00	1062.42
2	FID	ACIS-I-6	7.25	1218	0.012	0.038	0.007	0.011	0.000000	0.000000	395.83	1708.25
3	GUIDE	508166912	9.86	2433	-0.035	-0.067	0.129	0.206	241.478927	54.924337	927.75	1404.94
4	GUIDE	508169224	9.82	2432	0.041	0.039	0.112	0.176	242.580277	53.826359	-1754.61	-2303.76
5	GUIDE	508170896	9.01	2436	0.030	0.100	0.085	0.136	242.052968	54.527984	97.72	-260.87
6	GUIDE	508172800	7.91	2436	-0.119	0.074	0.059	0.096	242.573753	54.657892	968.23	-1061.26
7	GUIDE	508173376	8.33	2434	0.080	-0.141	0.069	0.108	241.134254	54.422412	-1015.38	1350.83

2.4 Star Slots

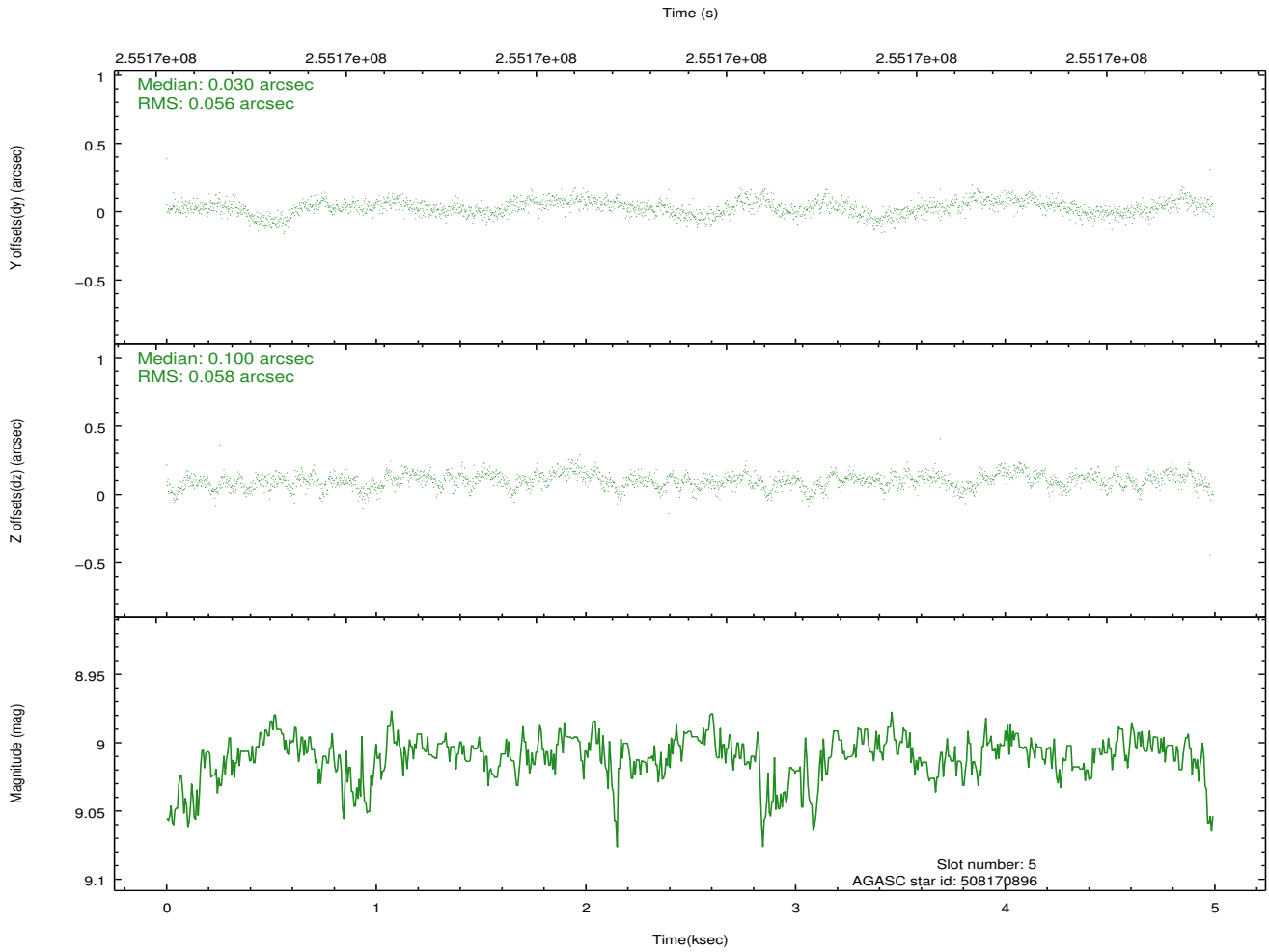
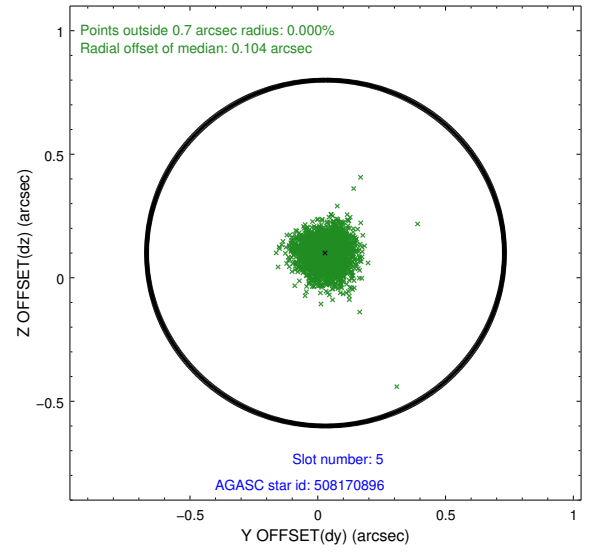
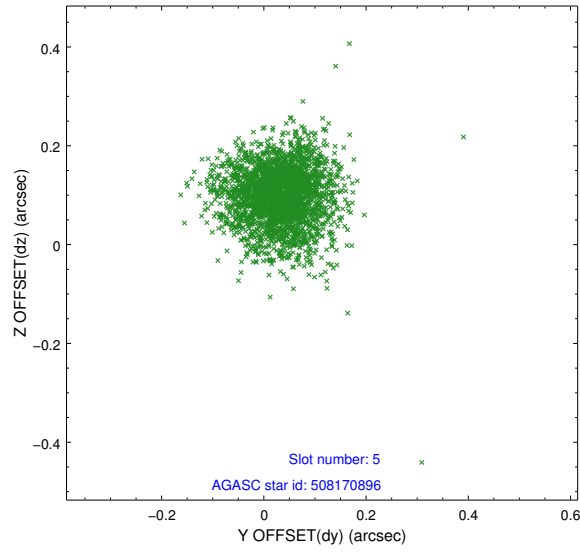
2.4.1 Slot 3



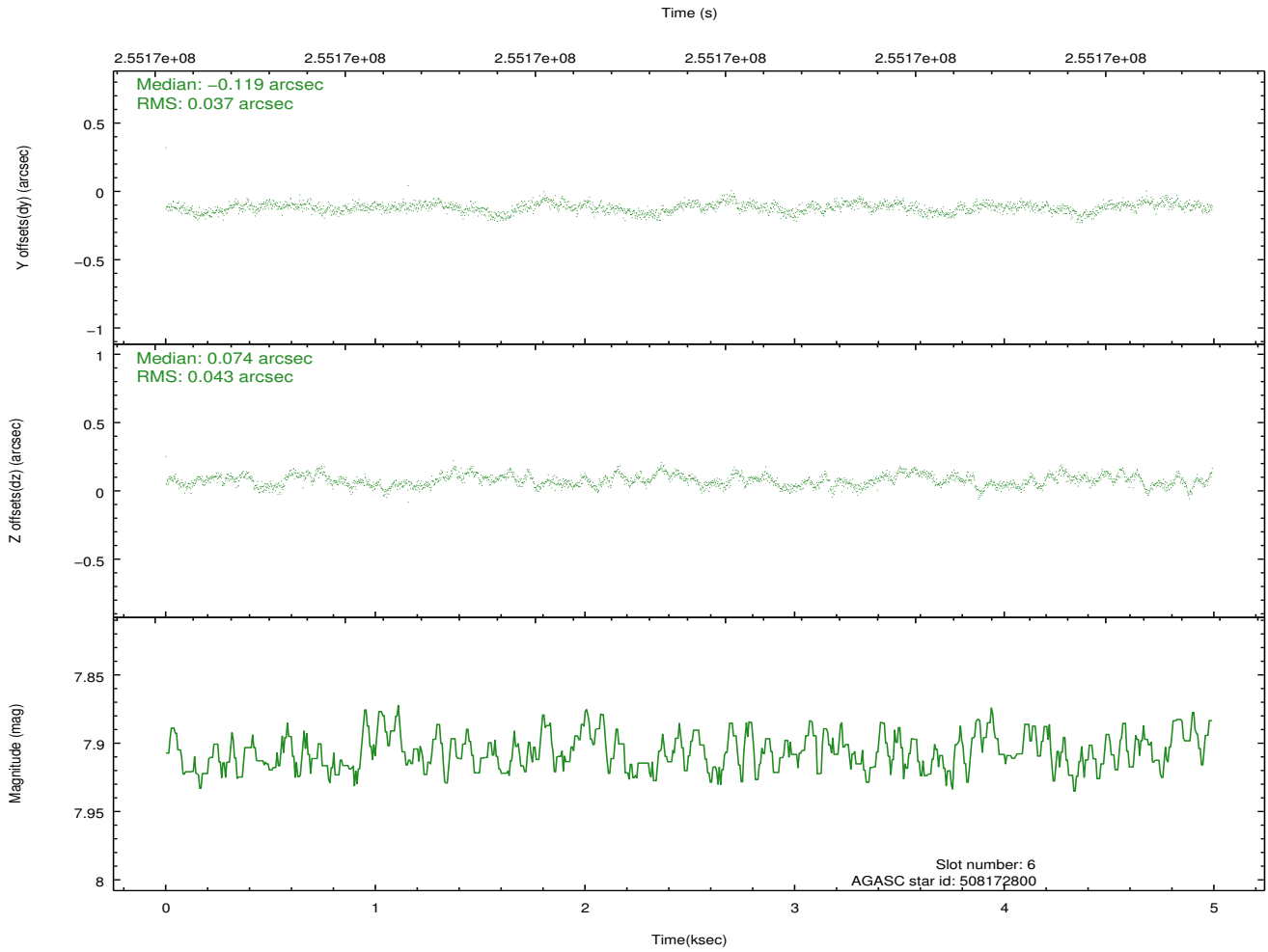
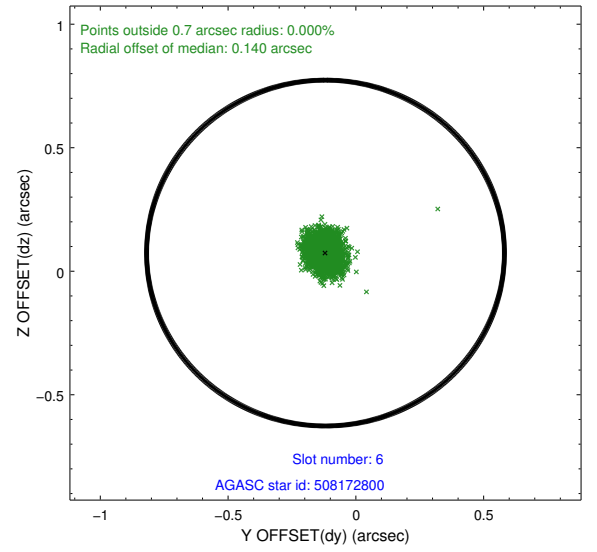
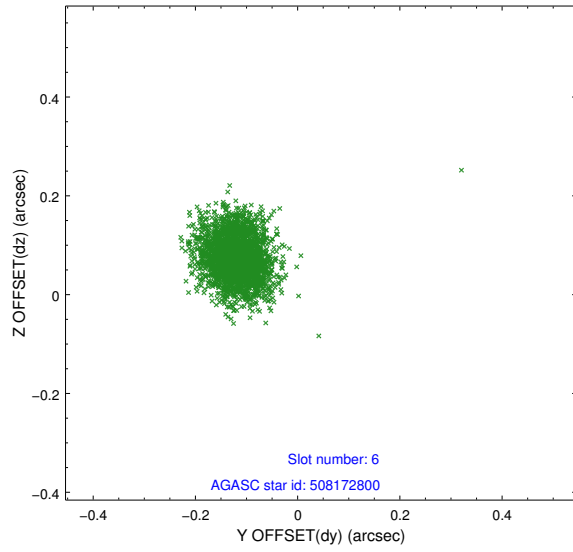
2.4.2 Slot 4



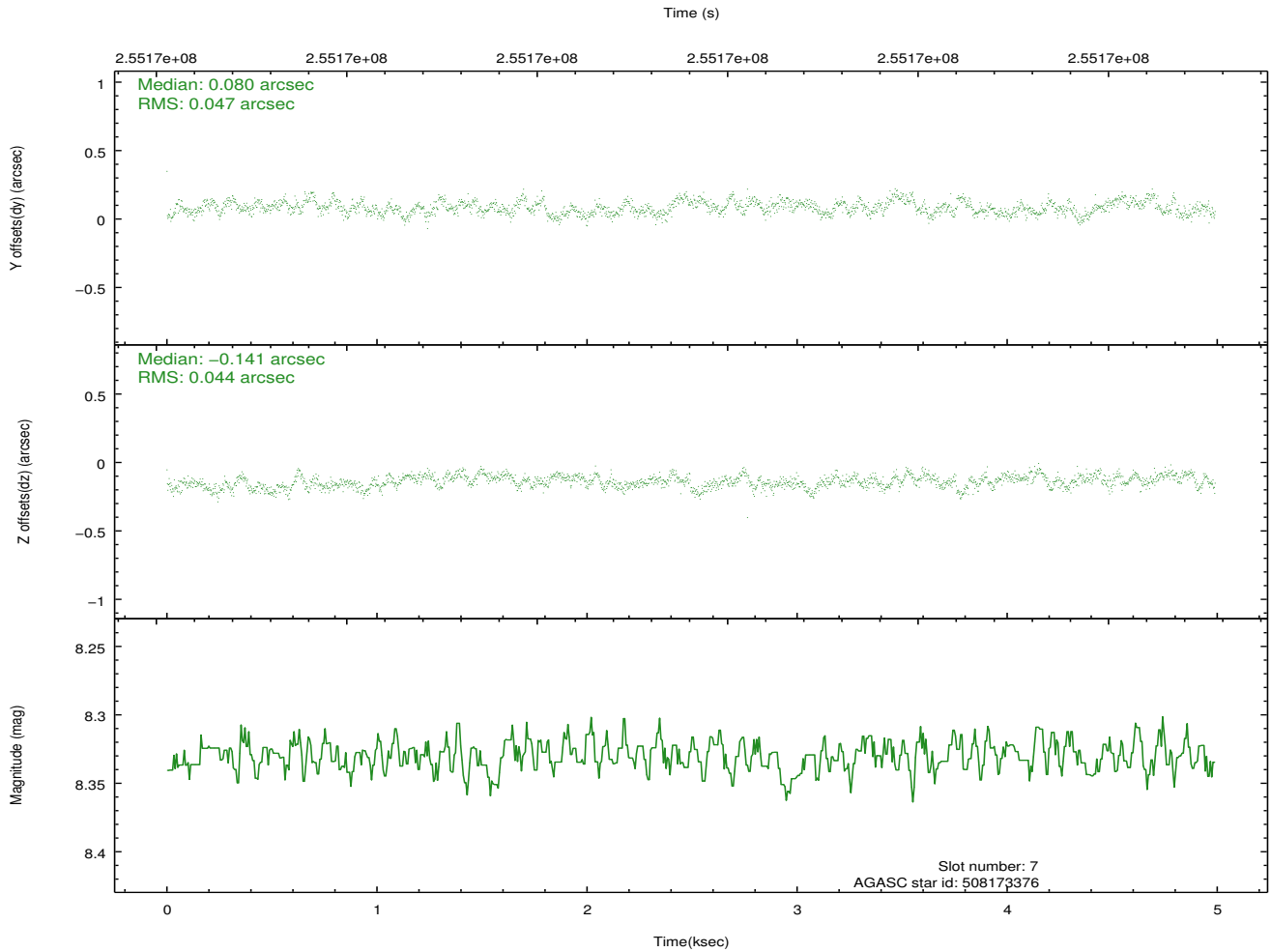
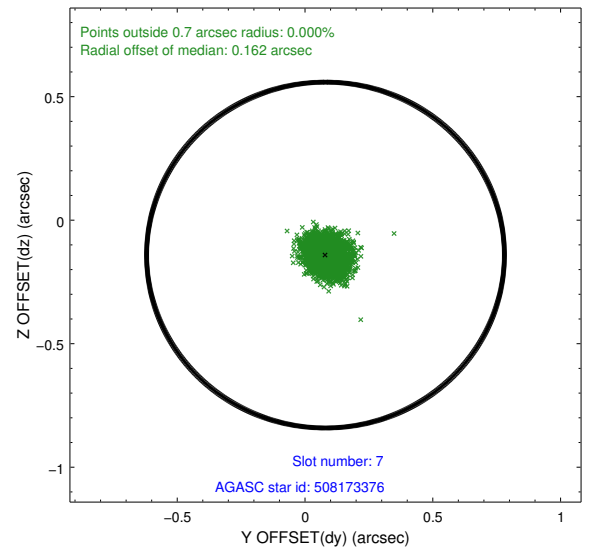
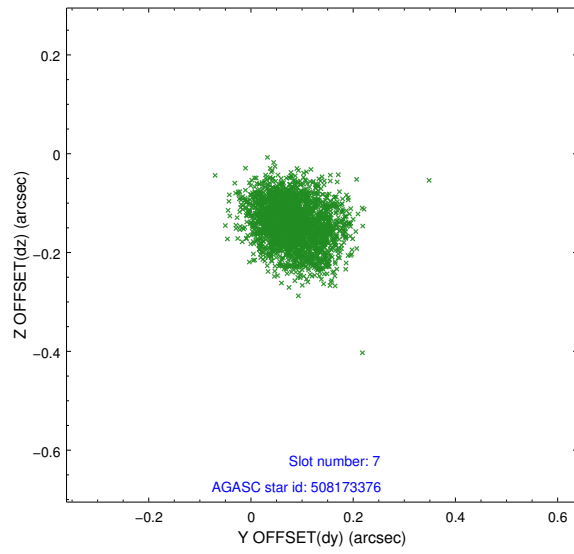
2.4.3 Slot 5



2.4.4 Slot 6

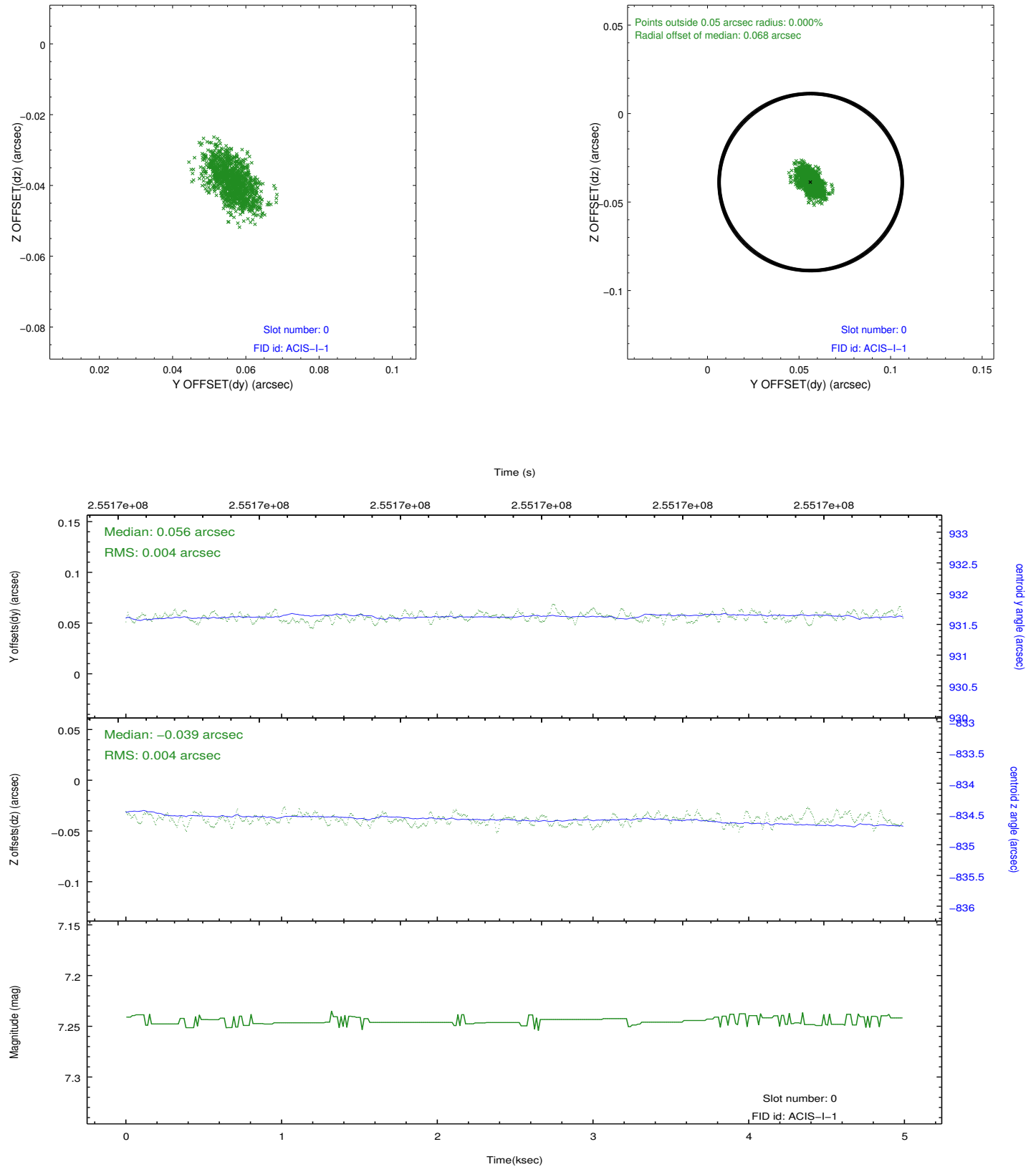


2.4.5 Slot 7

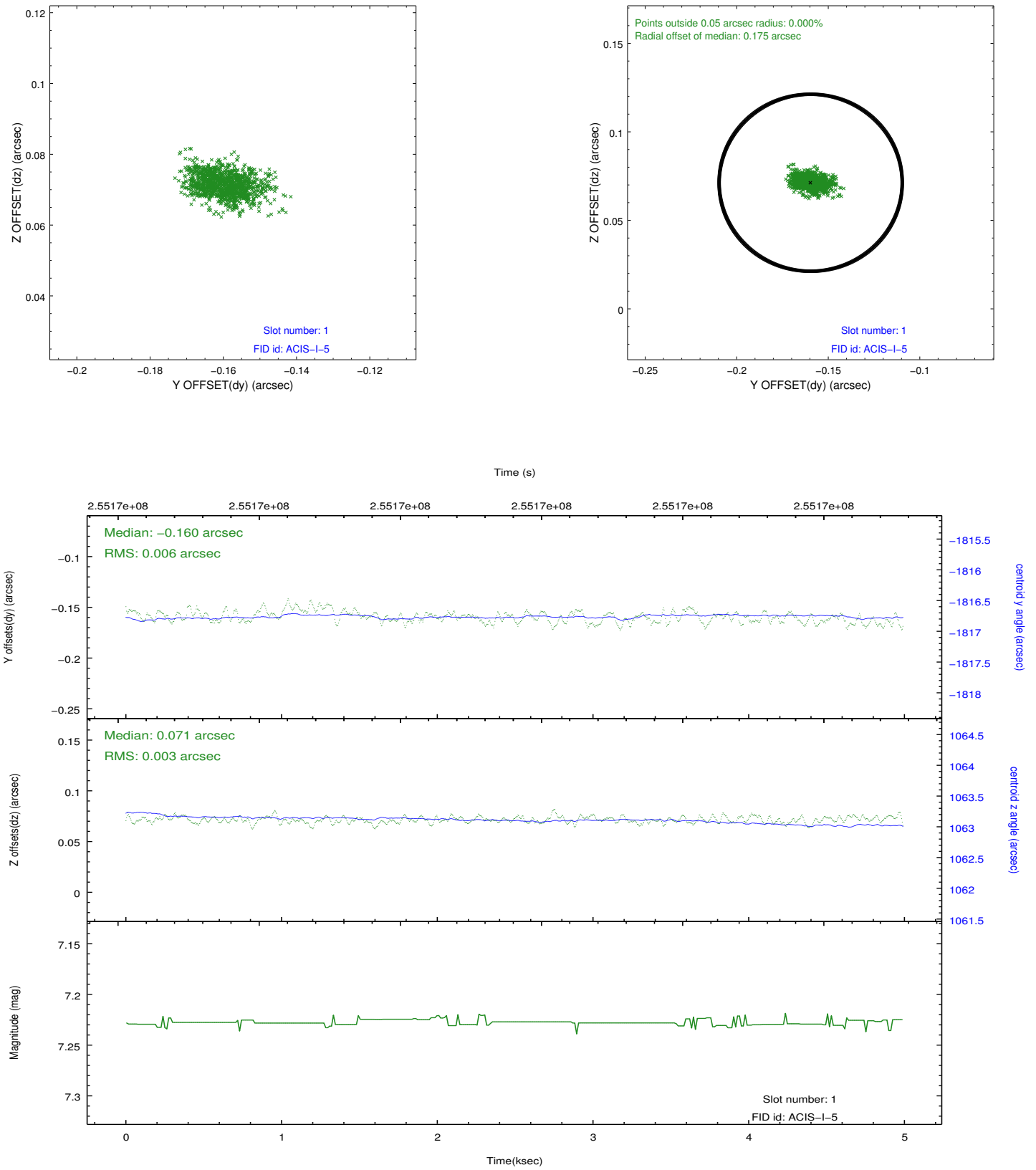


2.5 FID Slots

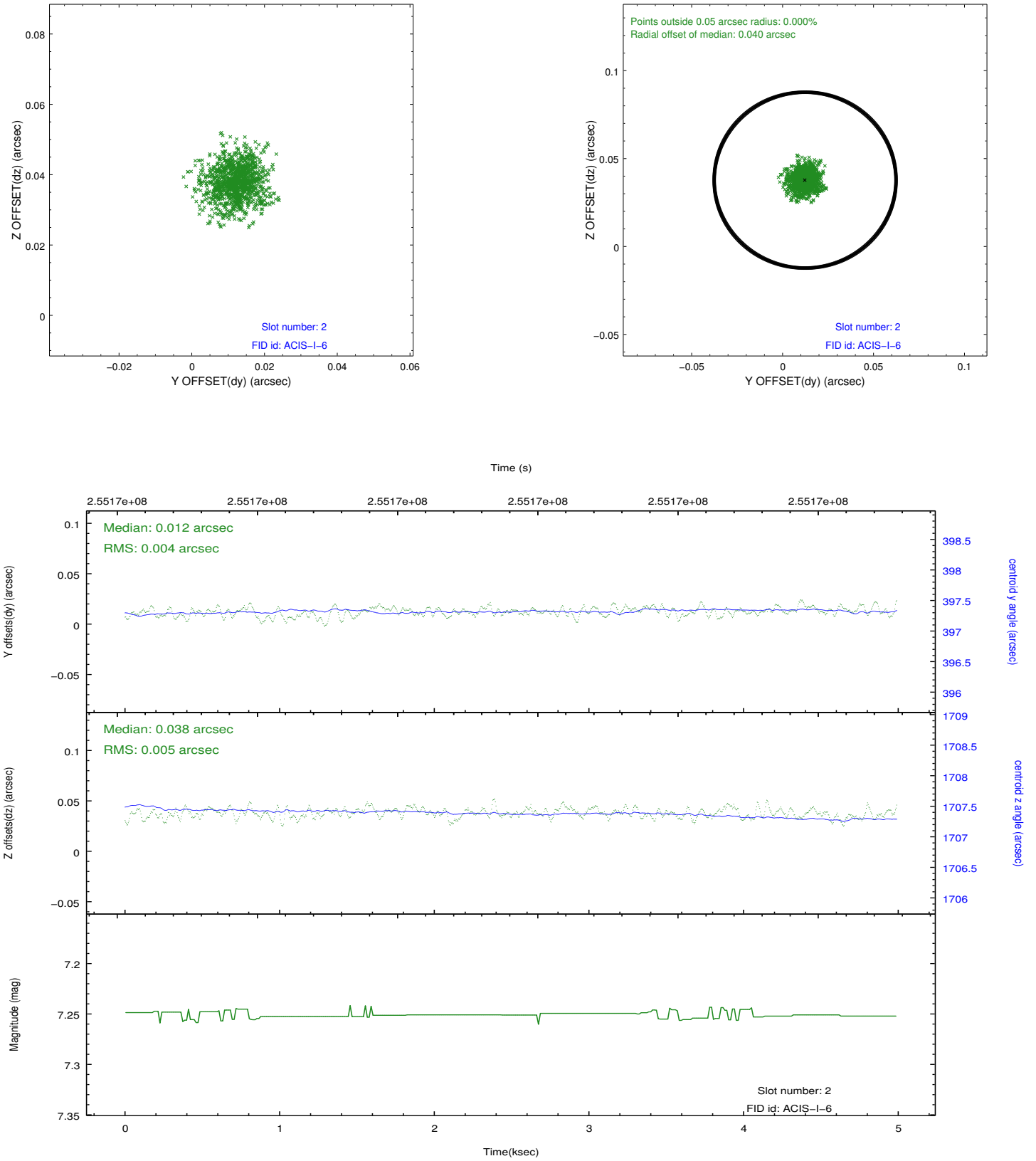
2.5.1 Slot 0



2.5.2 Slot 1



2.5.3 Slot 2



A Summary

A.1 Status

V&V Scientist	Jen Lauer
V&V Date (YYYY-MM-DD)	2012.03.26
V&V Edition	1
V&V Disposition and Status	OK
V&V Charge Time	4.55359998

A.2 Comments