

V&V Reference Report

L2 ASCDS Version : 7.6.7.1

Observation 5800 - L2 Version 002
Chandra X-Ray Center

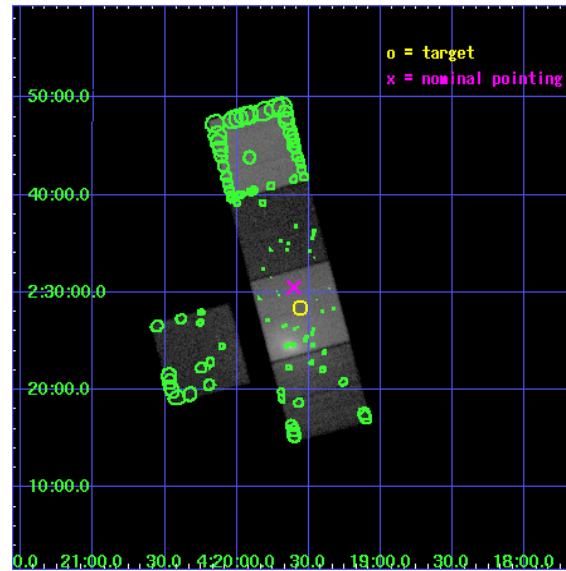
L2 Processing Date : Apr 2 2006

Contents

1	Front	2
2	OBI	3
2.1	OBI	3
2.1.1	Images	3
2.1.2	Bias	3
2.1.3	Parameters	4
2.1.4	Events	4
2.2	Compared Parameters	5
2.3	Aspect	6
2.4	Star Slots	9
2.4.1	Slot 3	9
2.4.2	Slot 4	10
2.4.3	Slot 5	11
2.4.4	Slot 6	12
2.4.5	Slot 7	13
2.5	FID Slots	14
2.5.1	Slot 0	14
2.5.2	Slot 1	15
2.5.3	Slot 2	16
3	Point Sources	17
A	Summary	18
A.1	Status	18
A.2	Comments	18

1 Front

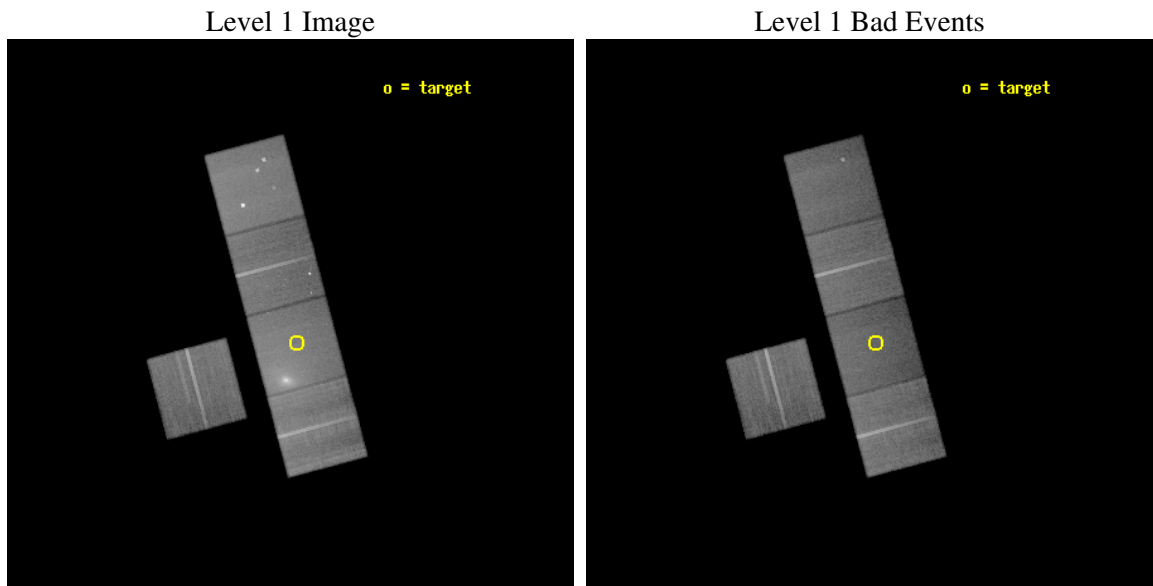
seq_num	800513
obs_id	5800
title	Intracluster Gas Velocity Tomography in RXJ0419.6+0225
observer	Dr Renato Dupke
object	RXJ0419.6+0225(OFF1)
dtcycle	0
cycle	P
ra_targ	64.889583
dec_targ	2.472889
ra_nom	64.900874939687
dec_nom	2.5085299784577
roll_nom	75.138787462236
revision	2
ontime	45132.899913222
livetime	44543.205349498
ontime3	45123.476912528
ontime5	45132.899913222
ontime6	45126.617912799
ontime7	45132.899913222
ontime8	45129.758922935
l2events	543409



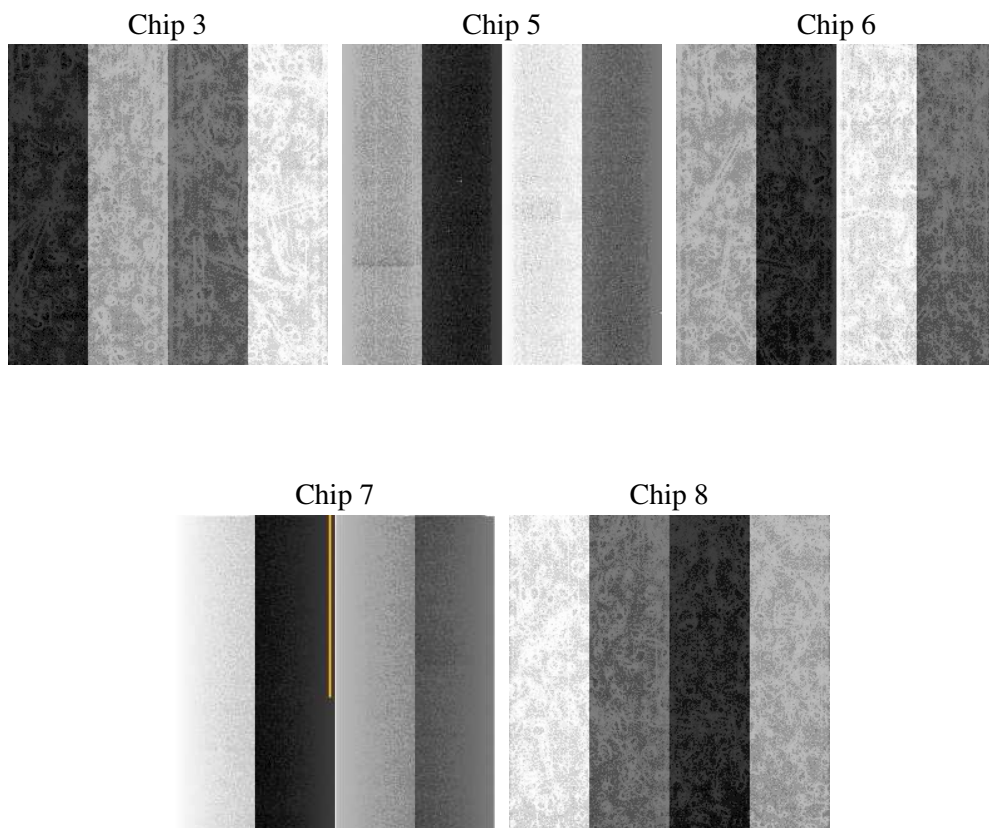
2 OBI

2.1 OBI

2.1.1 Images



2.1.2 Bias



2.1.3 Parameters

obi_num	0
ascdsver	7.6.7.1
caldsver	3.2.1
date	2006-04-02T17:27:46
revision	2

sched_exp_time	45000.000000
ontime	46801.107896894
ontime3	46791.684886307
ontime5	46801.107896894
ontime6	46794.825896472
ontime7	46801.107896894
ontime8	46797.966896713
l1events	1918262

2.1.4 Events

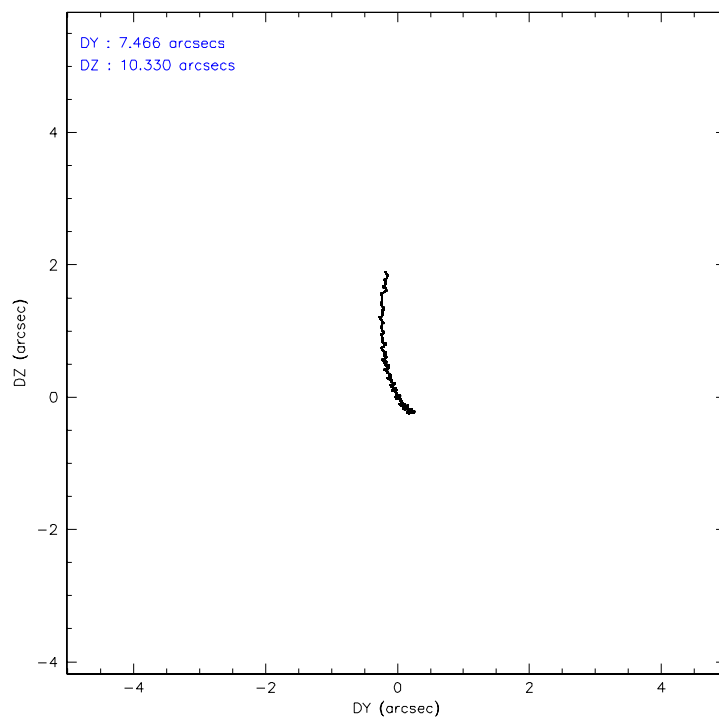
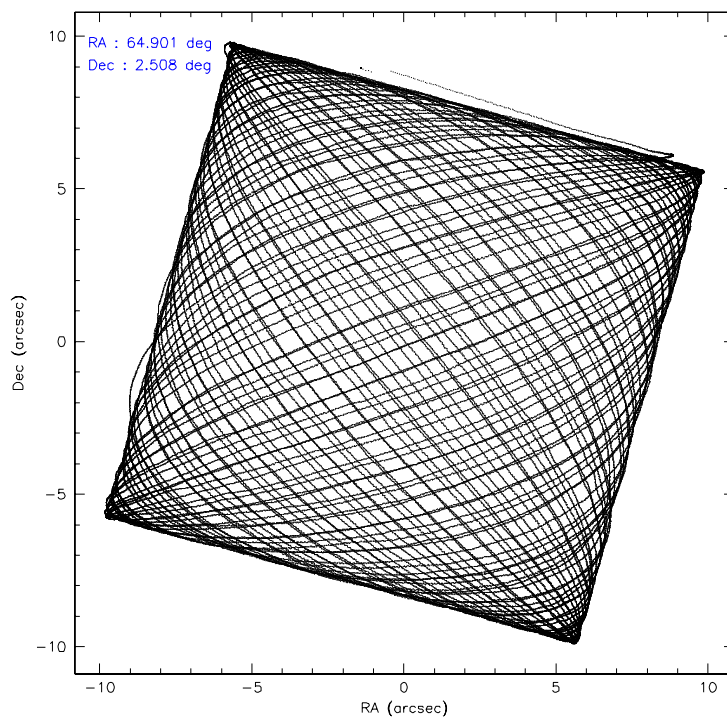
	ccd 3	ccd 5	ccd 6	ccd 7	ccd 8
level 1 events	302044	432311	319627	448979	415301
rejected events	266389	227513	278262	207464	302938
rejected %	88%	52%	87%	46%	72%

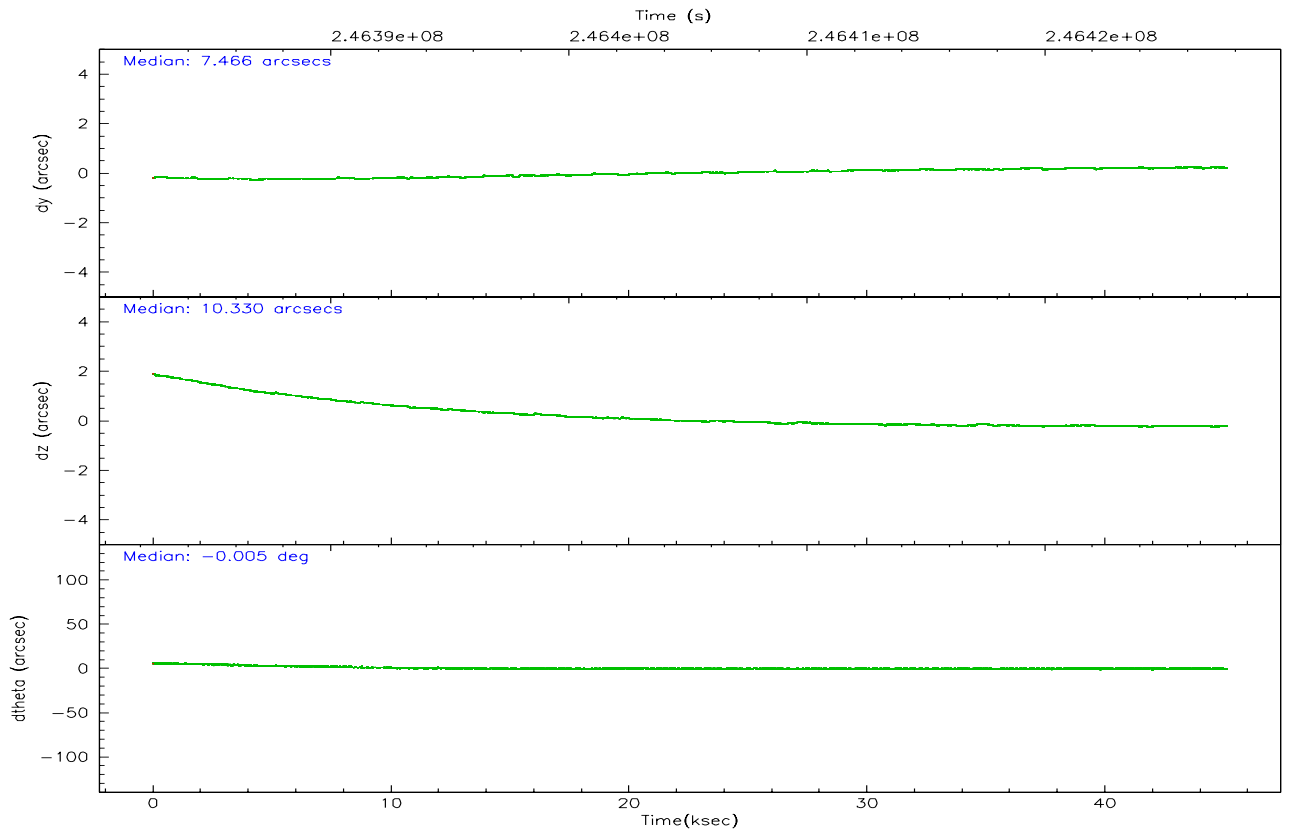
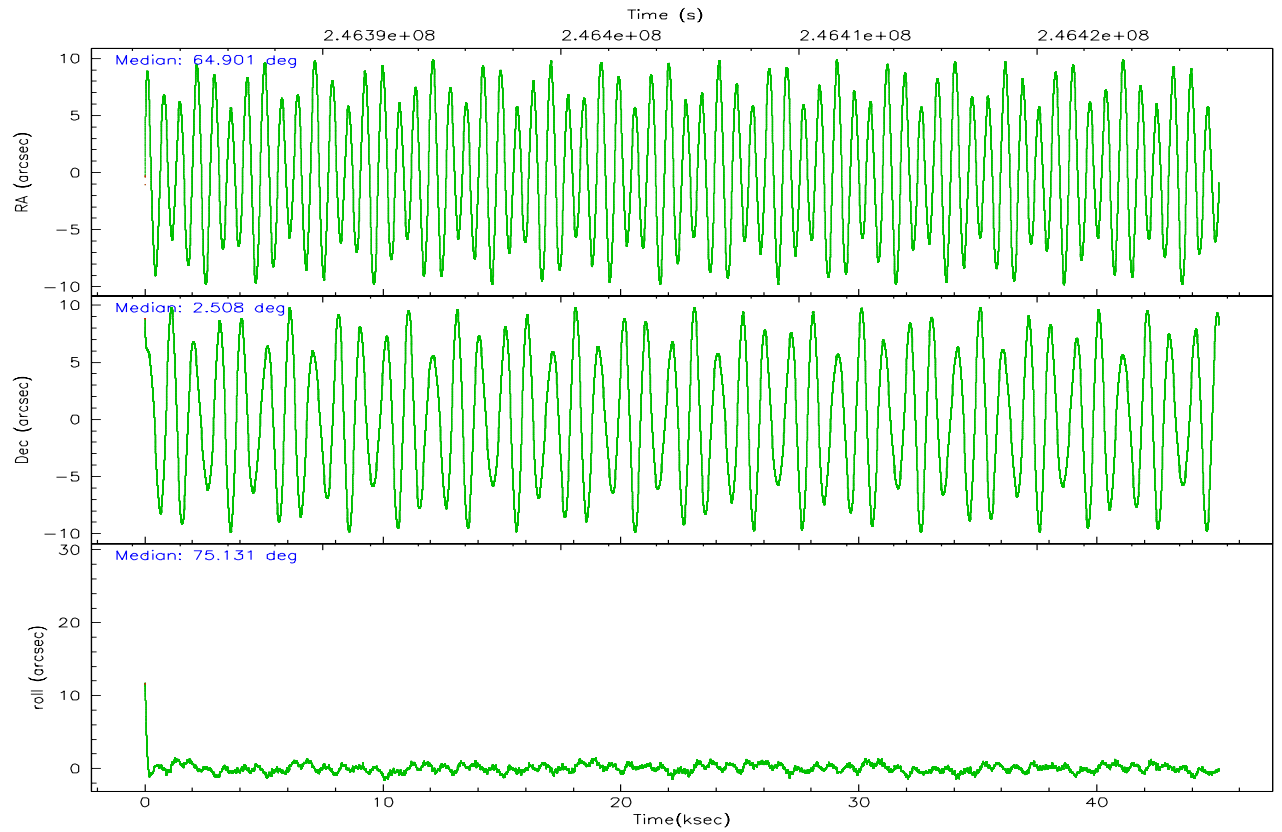
	ccd 3	ccd 5	ccd 6	ccd 7	ccd 8
grade 0 events	16913	23801	19901	37904	48821
	5%	5%	6%	8%	11%
grade 1 events	190	188	203	170	374
	0%	0%	0%	0%	0%
grade 2 events	6828	64556	8161	66682	22657
	2%	14%	2%	14%	5%
grade 3 events	3517	5422	3914	19569	10303
	1%	1%	1%	4%	2%
grade 4 events	3481	5324	3722	19109	9554
	1%	1%	1%	4%	2%
grade 5 events	12021	23466	12727	26930	18015
	3%	5%	3%	5%	4%
grade 6 events	5985	113284	6930	103804	24482
	1%	26%	2%	23%	5%
grade 7 events	253109	196270	264069	174811	281095
	83%	45%	82%	38%	67%

2.2 Compared Parameters

Parameter	Planned	Actual	Parameter	Planned	Actual
Instrument	ACIS	ACIS	Obspar format version number	6	6
Detector	ACIS-35678	ACIS-35678	Obspar file type	PREDICTED	ACTUAL
Grating	NONE	NONE	Obspar update status	NONE	UPDATED
Data mode	VFAINT	VFAINT	On-chip summing requested	N	N
Observation mode	POINTING	POINTING	Subarray requested	NONE	NONE
Pointing RA	64.908360	64.90087493968717	Alternating exposures requested	N	N
Pointing Dec	2.482352	2.508529978457678	Primary exposure time	0.000000	3.1
Pointing Roll	74.981827	75.13878746223621			
SIM focus pos (mm)	-0.684267	-0.6828225247311905			
SIM defocus (mm)	0	0.001444936568705701			
SIM translation stage pos (mm)	-190.132523	-190.1400660498719			
SIM translation stage offset (mm)	0	0.00754346686406393			
Observation start time	246382673.184000	246380718.28503			
Observation start date	2005-10-22T15:36:49	2005-10-22T15:05:18			
Observation end time	246427673.184000	246428839.98725			
Observation end date	2005-10-23T04:06:49	2005-10-23T04:27:19			
Read mode	TIMED	TIMED			

2.3 Aspect



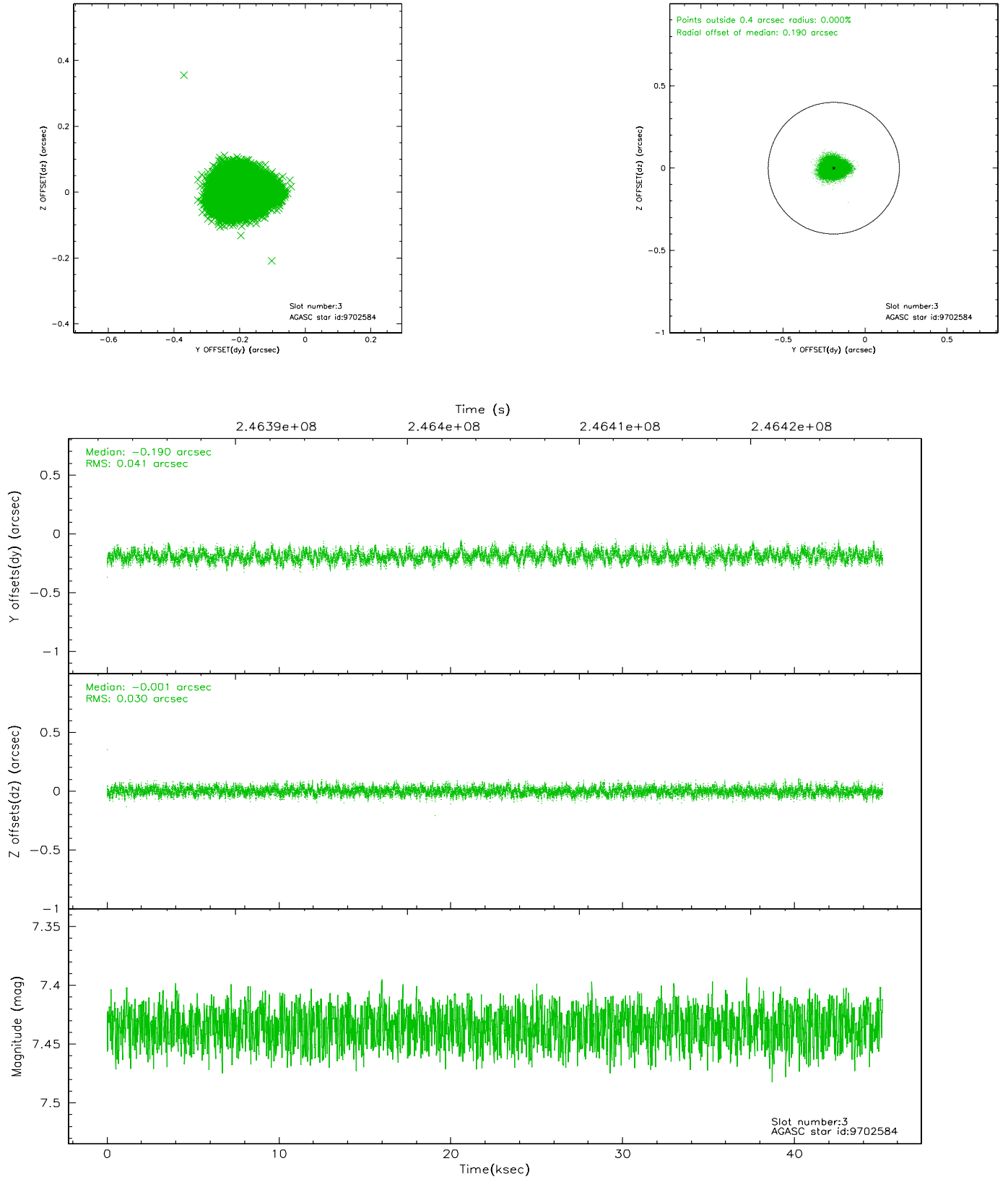


Slot Statistics

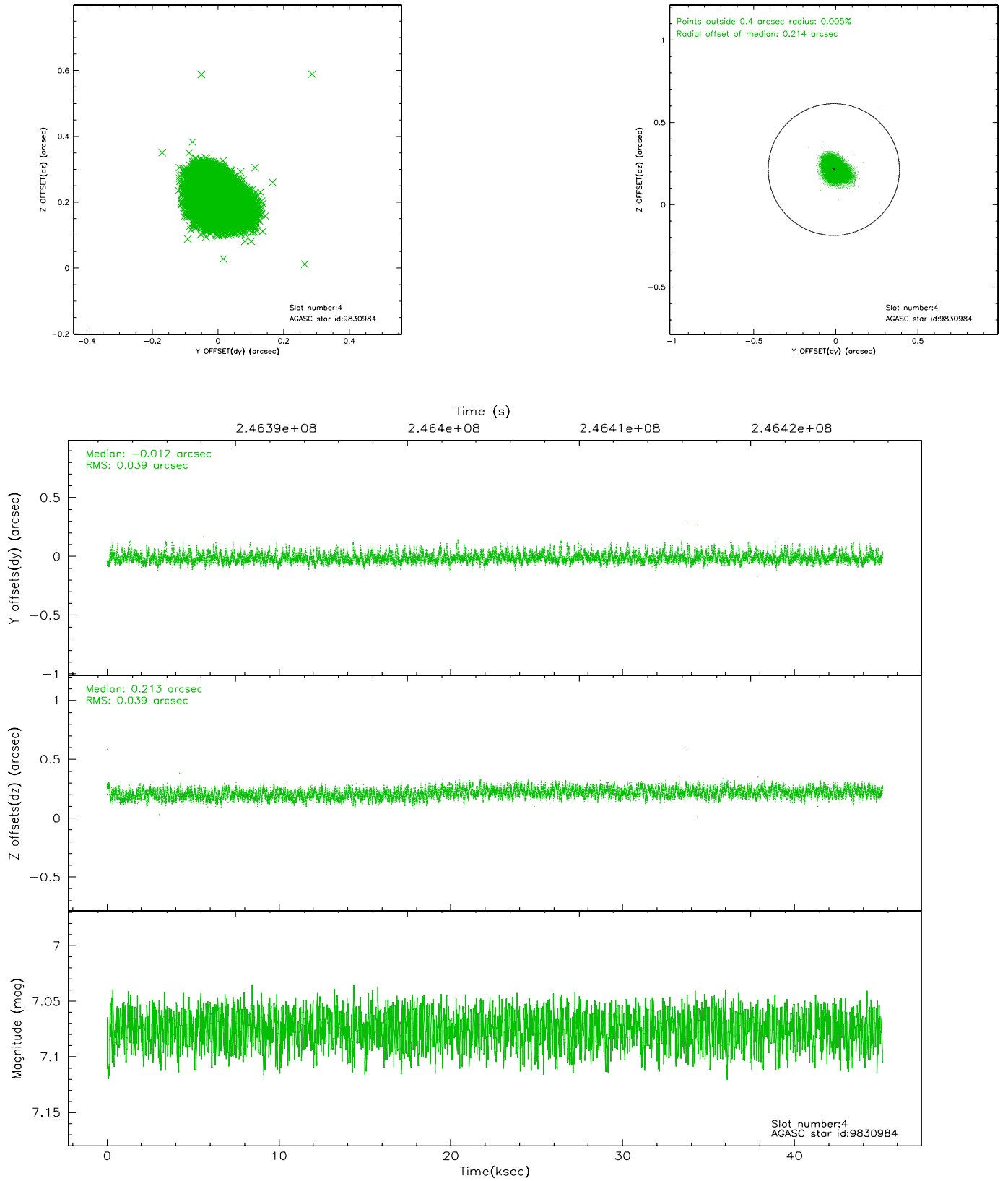
slot	status	id	mag	n_pts	med_dy	med_dz	dr1	dr2	ra	dec	mean_y	mean_z
0	FID	ACIS-S-2	7.11	11009	-0.038	-0.000	0.010	0.022	0.000000	0.000000	-760.22	-1731.87
1	FID	ACIS-S-4	7.21	11008	0.061	0.018	0.011	0.024	0.000000	0.000000	2153.11	176.70
2	FID	ACIS-S-5	7.23	11009	-0.054	-0.010	0.009	0.017	0.000000	0.000000	-1813.13	170.26
3	GUIDE	9702584	7.43	22017	-0.190	-0.001	0.055	0.087	64.640935	2.470534	-290.44	917.90
4	GUIDE	9830984	7.07	22020	-0.012	0.213	0.058	0.094	65.442956	2.390106	177.52	-1943.24
5	GUIDE	10092712	7.08	22019	0.110	-0.198	0.058	0.096	64.322459	2.529688	-381.15	2079.16
6	GUIDE	10093656	8.29	22014	0.124	-0.033	0.057	0.091	64.910383	2.992173	1774.68	468.64
7	GUIDE	10094304	8.20	22013	-0.037	0.011	0.052	0.086	64.684037	3.149047	2109.17	1400.70

2.4 Star Slots

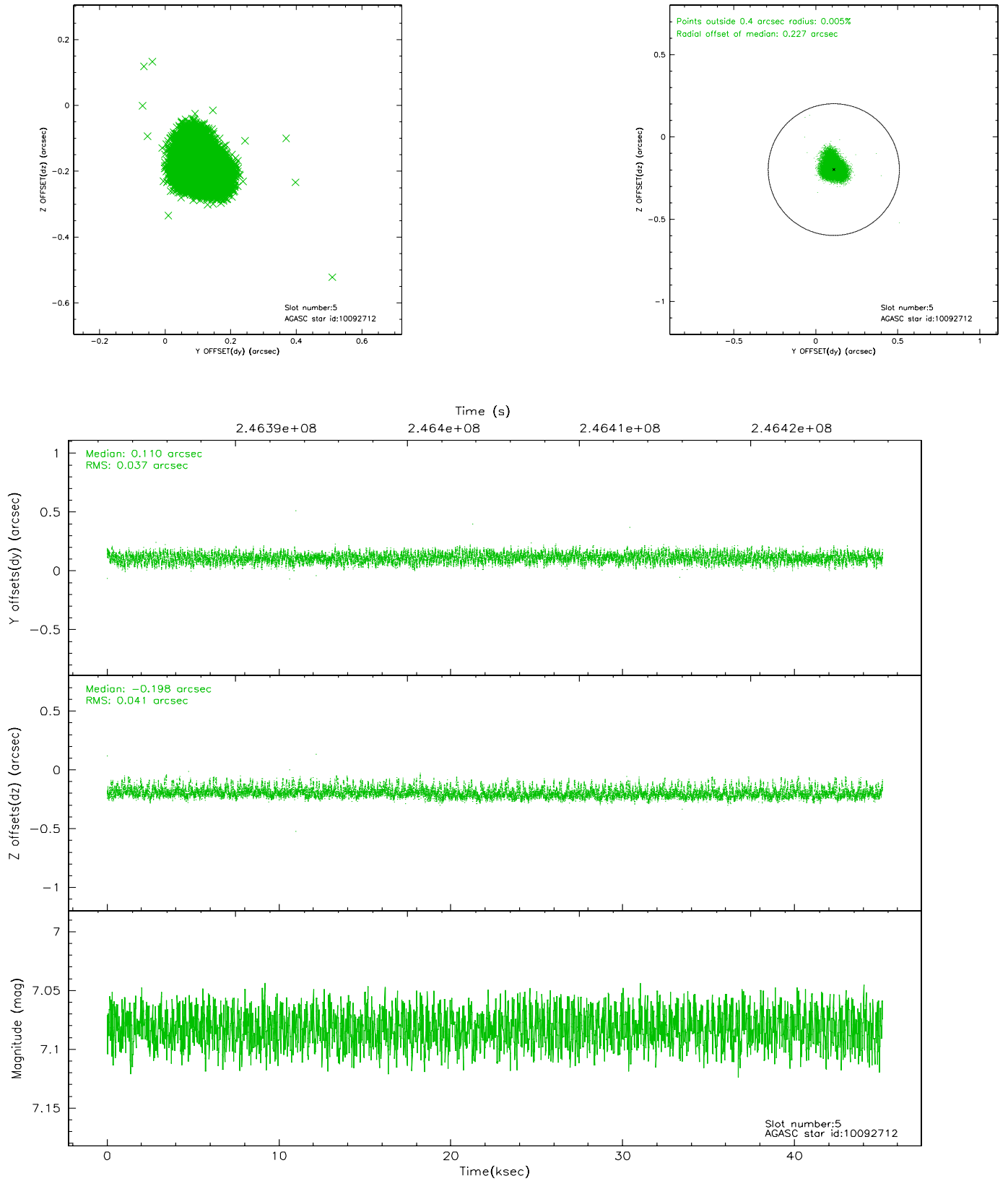
2.4.1 Slot 3



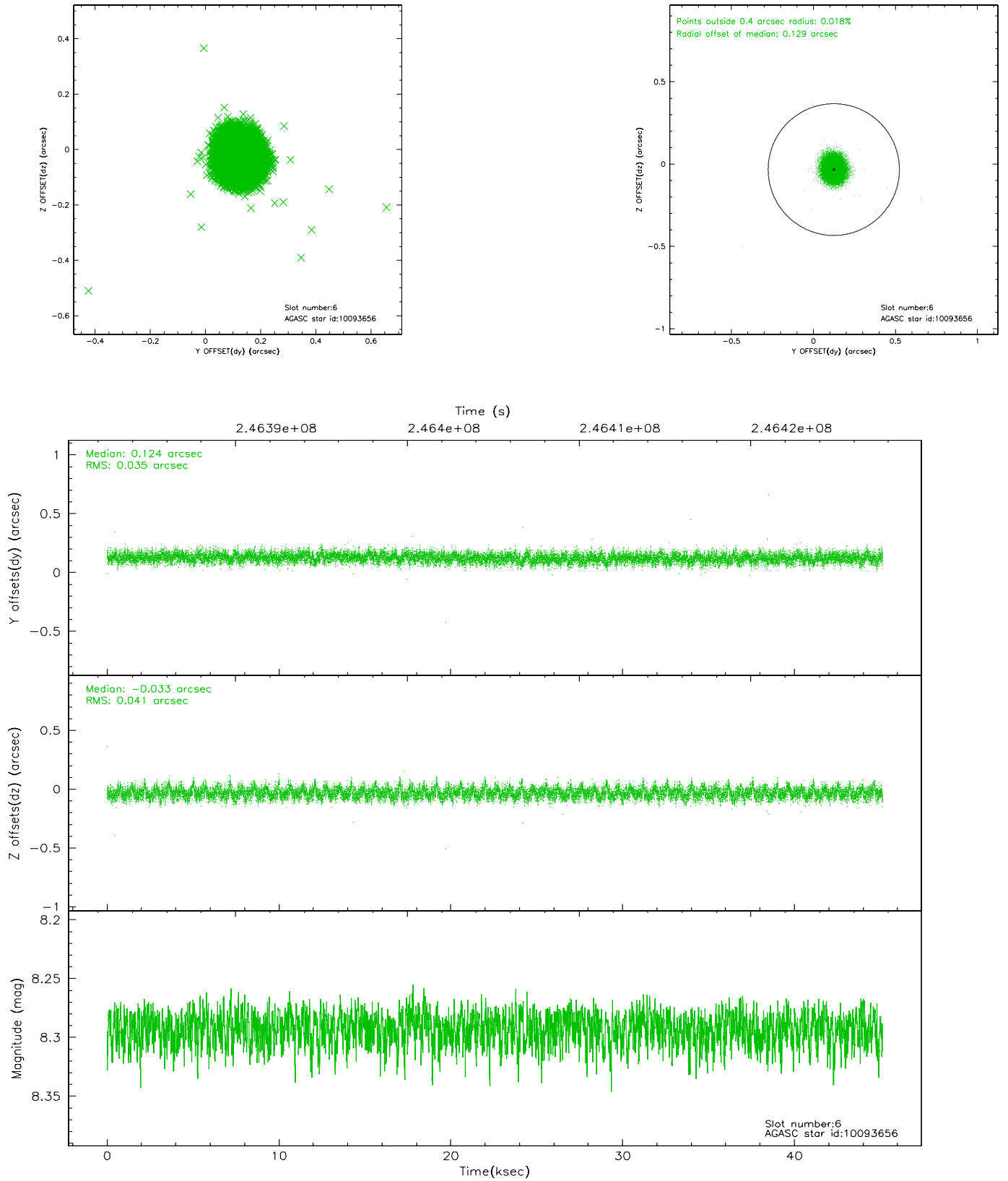
2.4.2 Slot 4



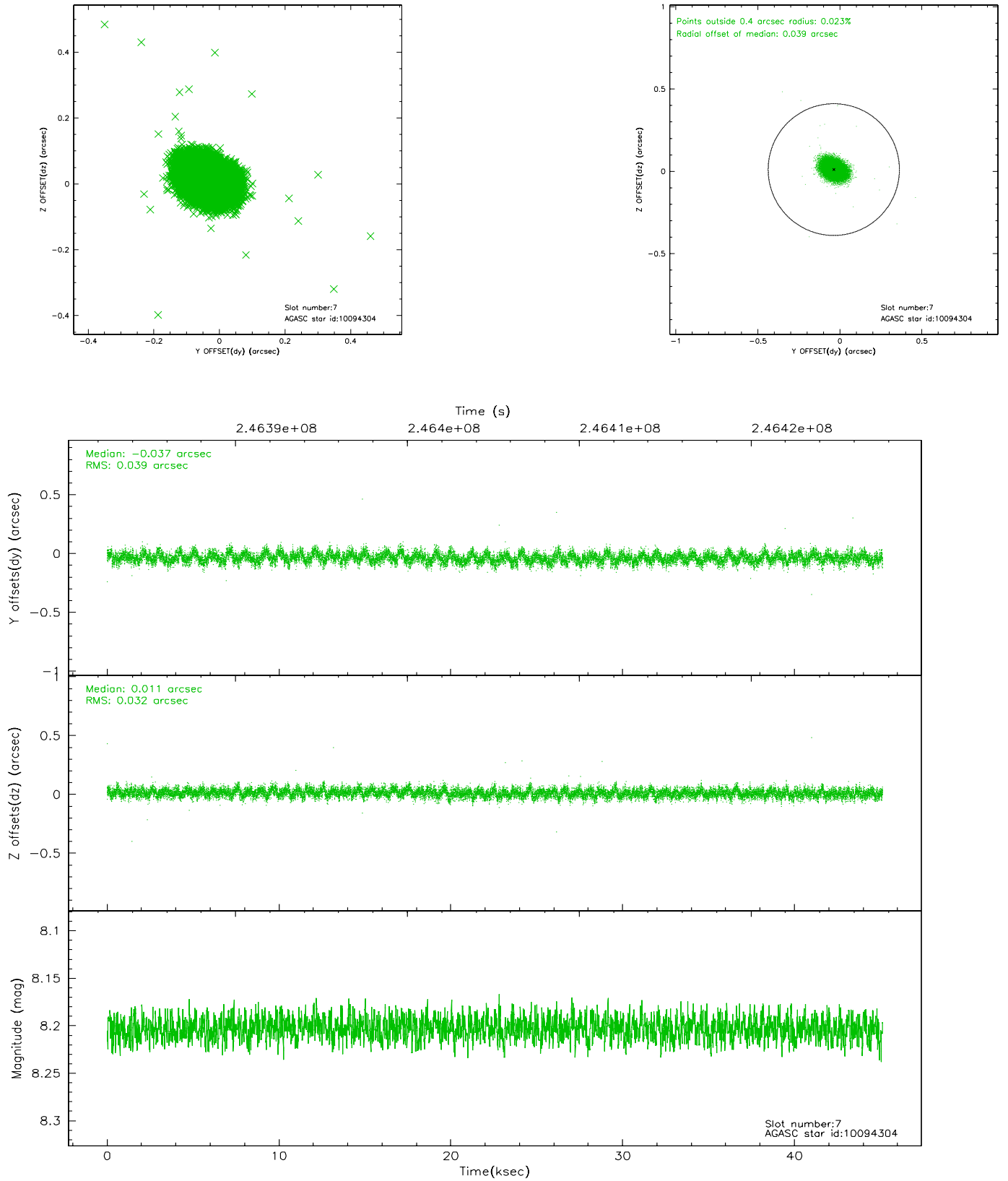
2.4.3 Slot 5



2.4.4 Slot 6

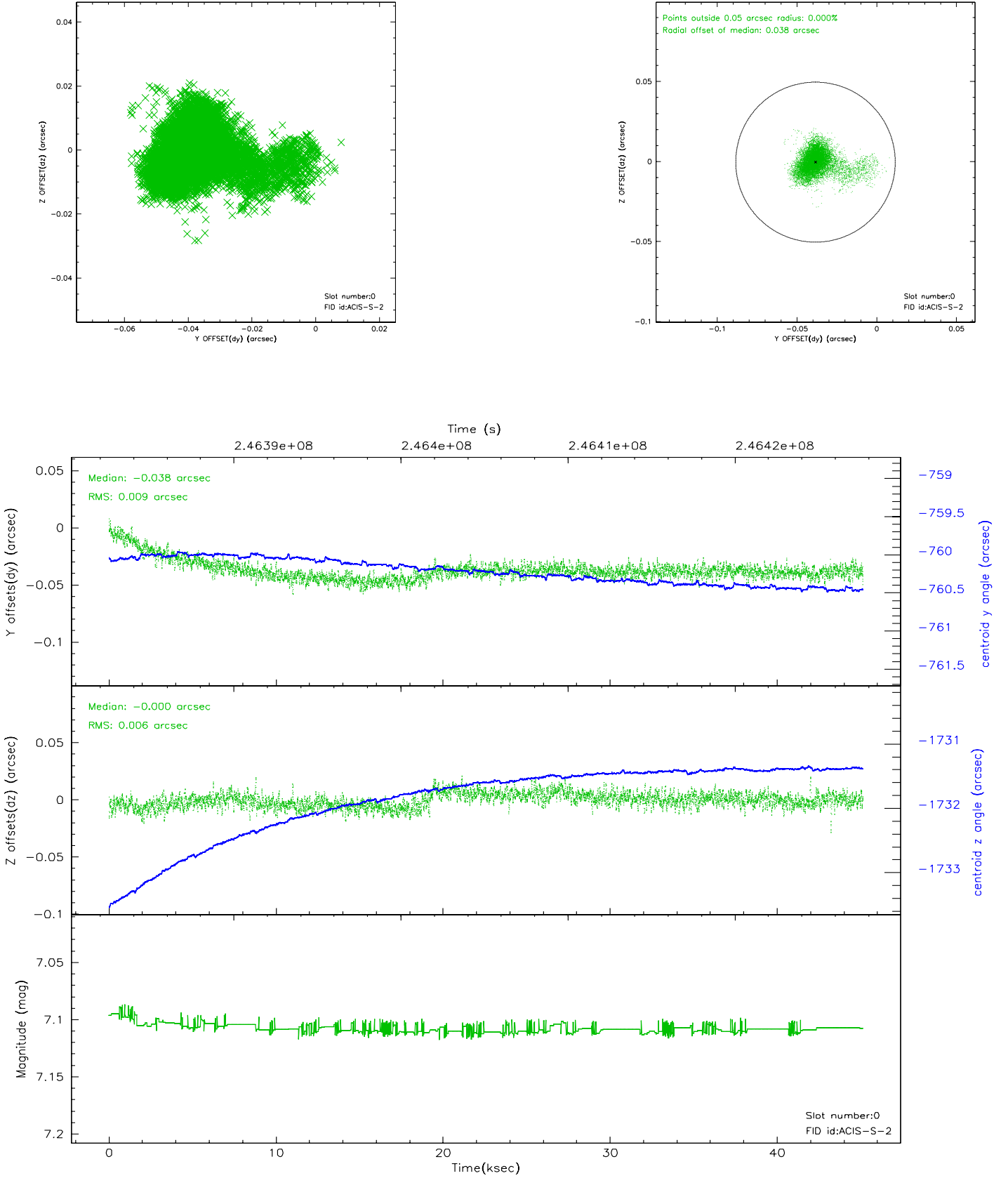


2.4.5 Slot 7

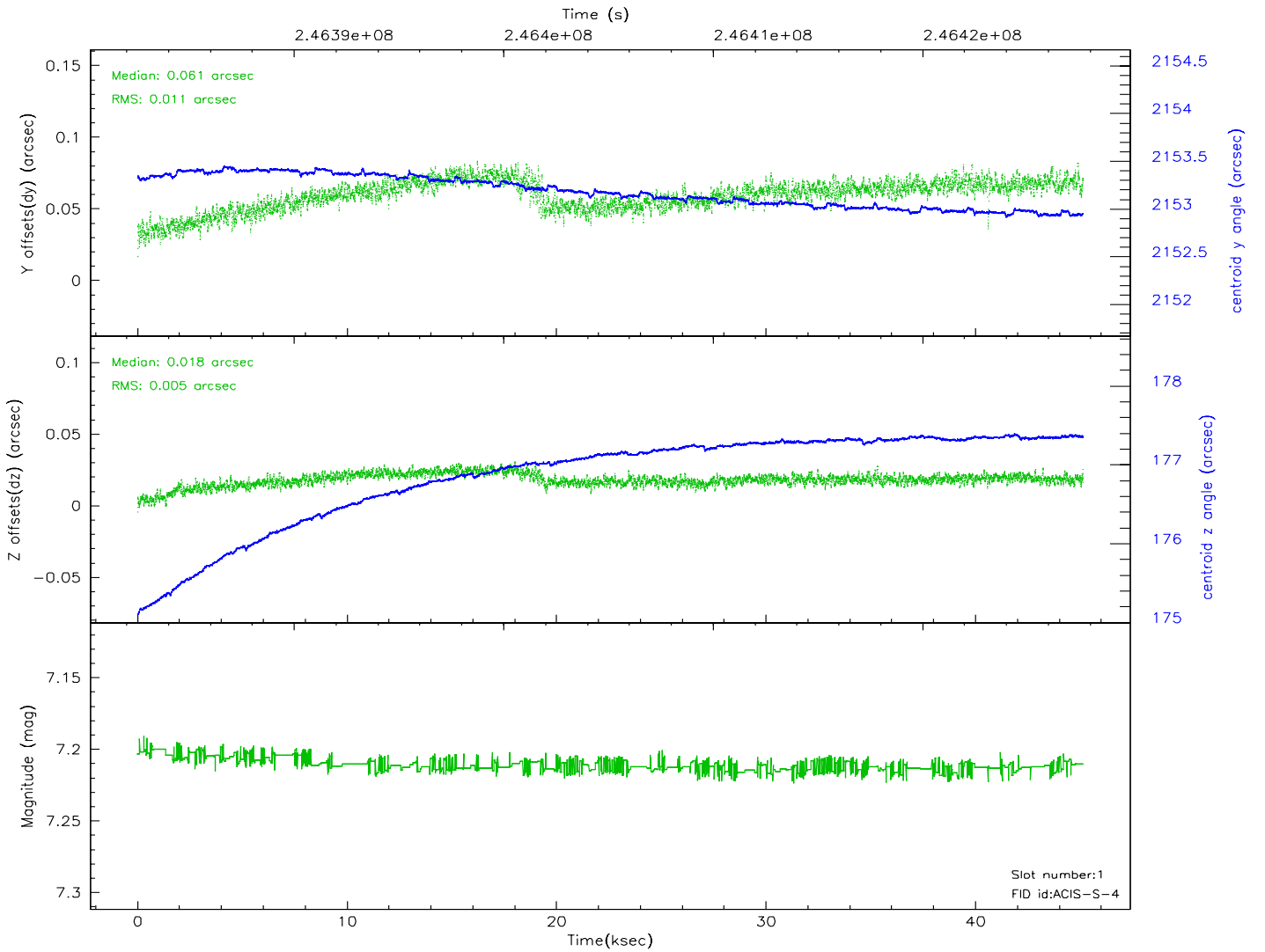
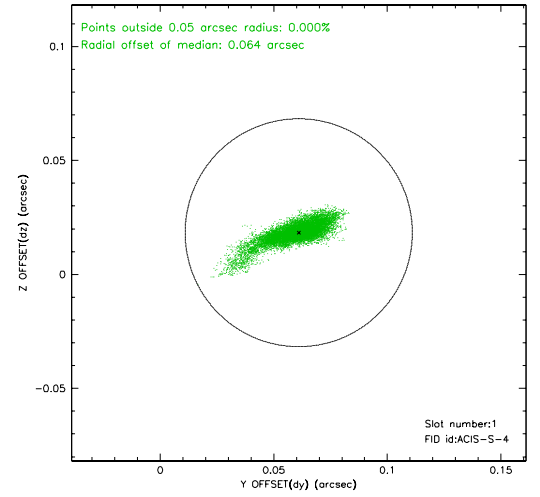
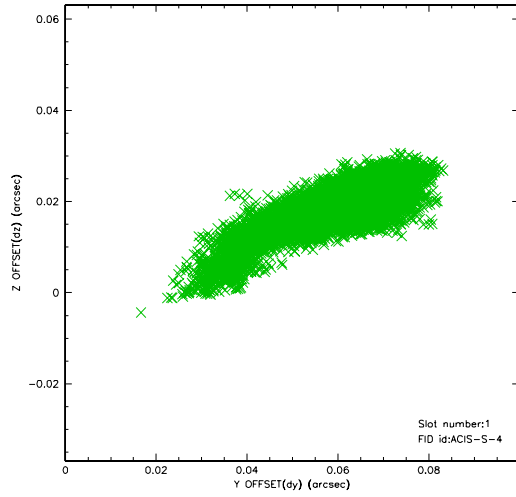


2.5 FID Slots

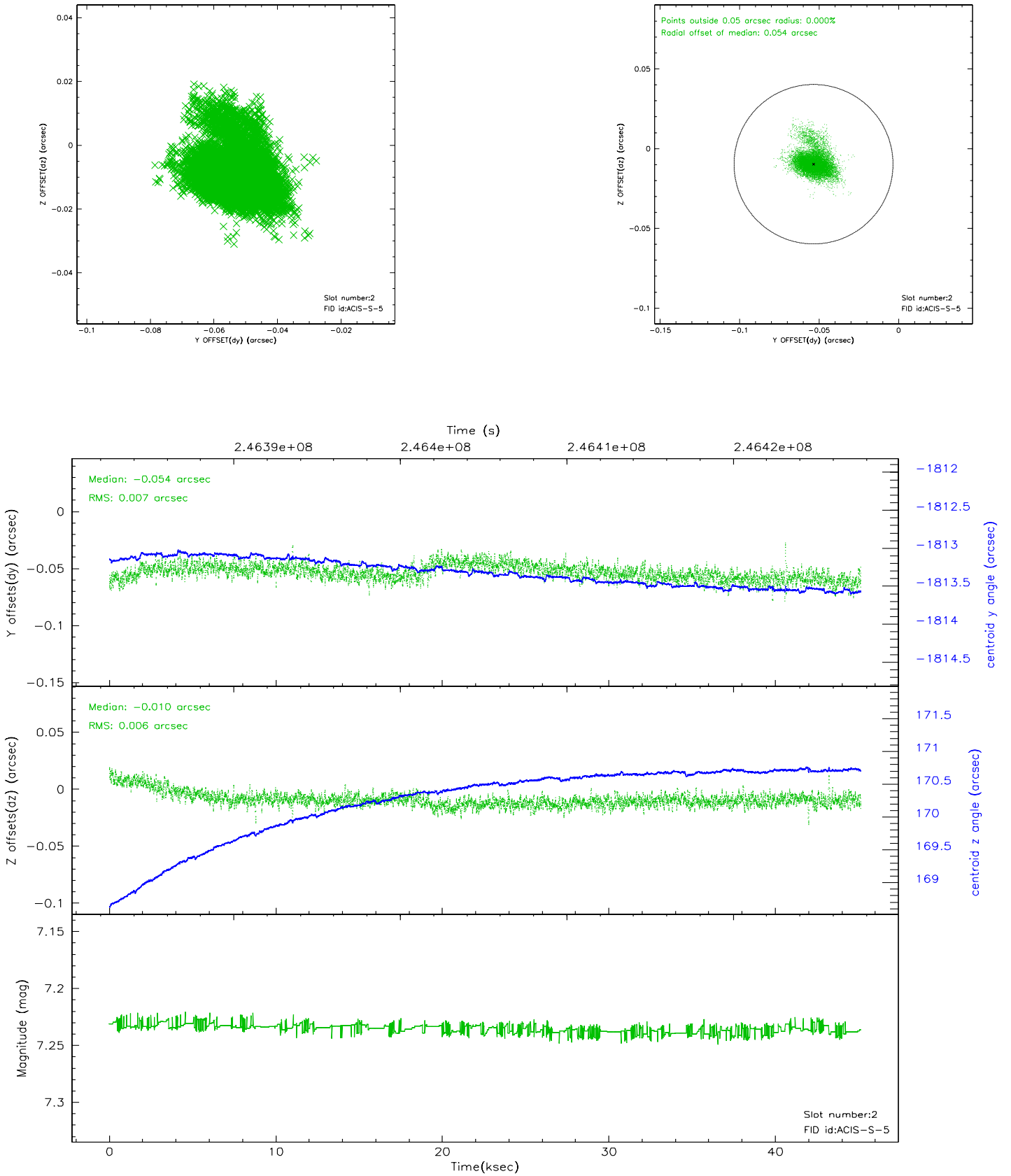
2.5.1 Slot 0



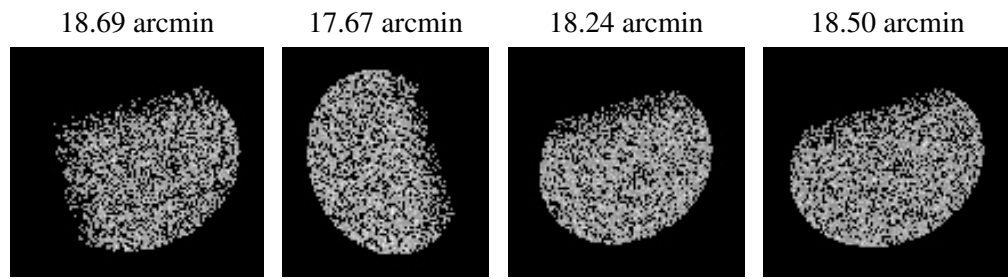
2.5.2 Slot 1



2.5.3 Slot 2



3 Point Sources



A Summary

A.1 Status

V&V Scientist	Beth Sundheim
V&V Date (YYYY-MM-DD)	2006.04.03
V&V Edition	1
V&V Disposition and Status	OK
V&V Charge Time	45.13289

A.2 Comments