

V&V Reference Report

L2 ASCDS Version : 8.5.1.1

Observation 5720 - L2 Version 3
Chandra X-Ray Center

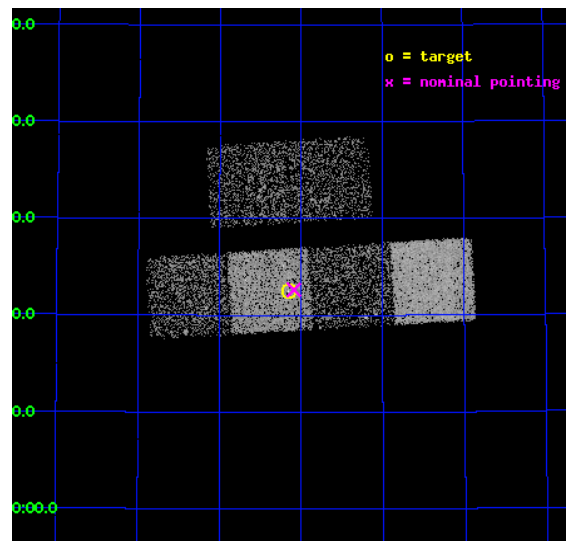
L2 Processing Date : Dec 20 2012

Contents

1	Front	2
2	OBI	3
2.1	OBI	3
2.1.1	Images	3
2.1.2	Bias	3
2.1.3	Parameters	4
2.1.4	Events	4
2.2	Compared Parameters	5
2.3	Aspect	6
2.4	Star Slots	9
2.4.1	Slot 3	9
2.4.2	Slot 4	10
2.4.3	Slot 5	11
2.4.4	Slot 6	12
2.4.5	Slot 7	13
2.5	FID Slots	14
2.5.1	Slot 0	14
2.5.2	Slot 1	15
2.5.3	Slot 2	16
A	Summary	17
A.1	Status	17
A.2	Comments	17

1 Front

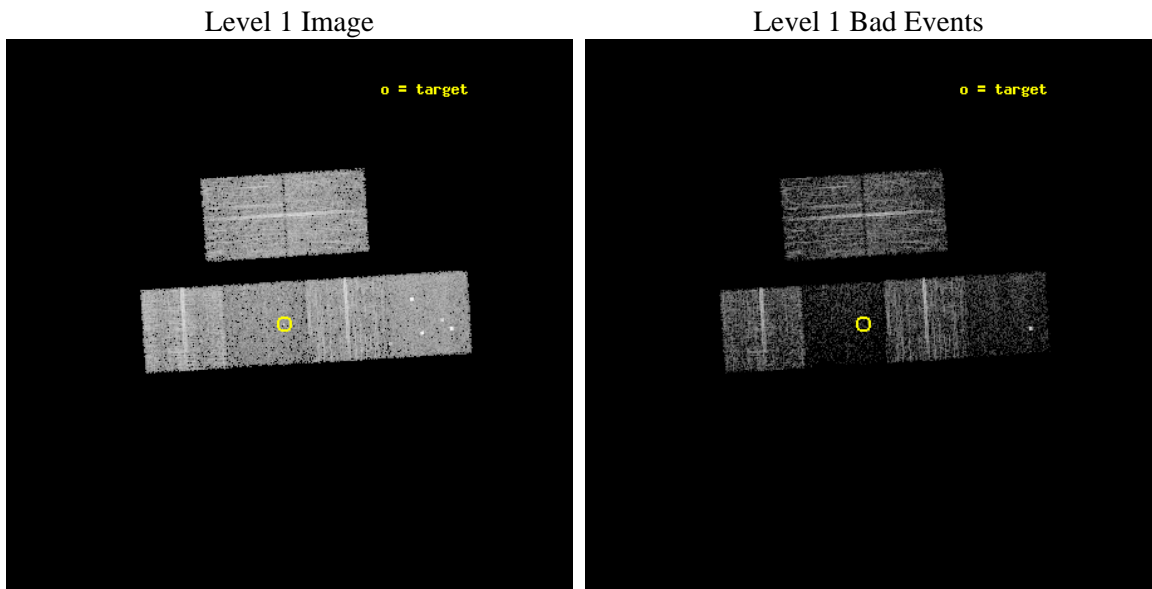
seq_num	701142	Sequence number
obs_id	5720	Observation id
title	What kind of Jets does Nature make? X-ray characterization of the FIRST Flat Spectrum Sample	Proposal title
observer	Dr. Giovanni Fossati	Principal investigator
object	87GB 1226+5539	Source name
dtcycle	0	
cycle	P	events from which exps? Prim/Second/Both
ra_targ	187.28875	Observer's specified target RA [deg]
dec_targ	55.375194	Observer's specified target Dec [deg]
ra_nom	187.27226042543	Nominal RA [deg]
dec_nom	55.37741945388	Nominal Dec [deg]
roll_nom	176.48393840704	Nominal Roll [deg]
revision	3	Processing version of data
ontime	4956.787348628	Sum of GTIs [s]
livetime	4894.0215226007	Livetime [s]
ontime2	4956.7999815345	Sum of GTIs [s]
ontime3	4956.6642286181	Sum of GTIs [s]
ontime5	4956.7463086247	Sum of GTIs [s]
ontime6	4956.7052686214	Sum of GTIs [s]
ontime7	4956.787348628	Sum of GTIs [s]
ontime8	4956.6231886446	Sum of GTIs [s]
l2events	29165	Number of level 2 events



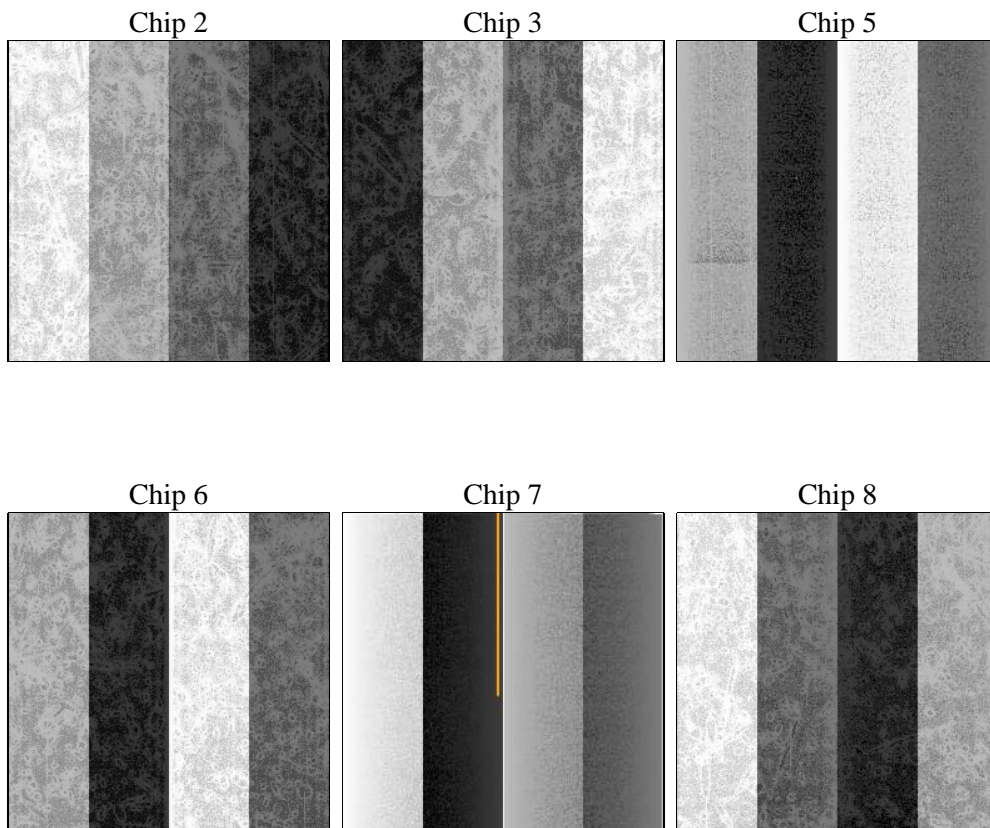
2 OBI

2.1 OBI

2.1.1 Images



2.1.2 Bias



2.1.3 Parameters

obi_num	0	Obi number	sched_exp_time	5000.000000	[s] Scheduled observation exposure time
ascdsver	8.5.1.1	Processing system revision	ontime	4956.787348628	Sum of GTIs [s]
caldsver	4.5.5	 	ontime2	4956.7999815345	Sum of GTIs [s]
date	2012-12-20T22:59:19	Date and time of file creation	ontime3	4956.6642286181	Sum of GTIs [s]
revision	3	Processing version of data	ontime5	4956.7463086247	Sum of GTIs [s]
			ontime6	4956.7052686214	Sum of GTIs [s]
			ontime7	4956.787348628	Sum of GTIs [s]
			ontime8	4956.6231886446	Sum of GTIs [s]
			l1events	151318	Number of level 1 events

2.1.4 Events

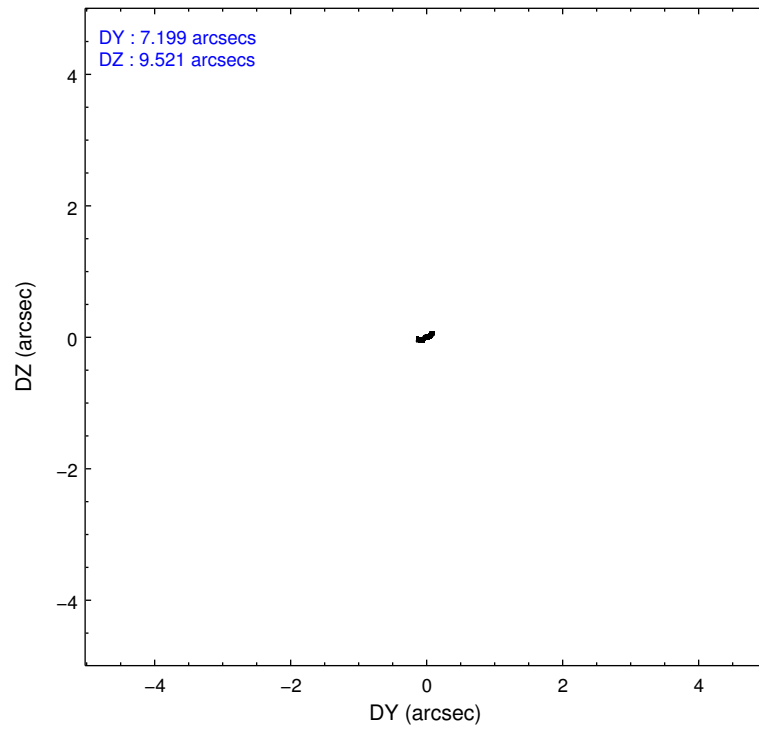
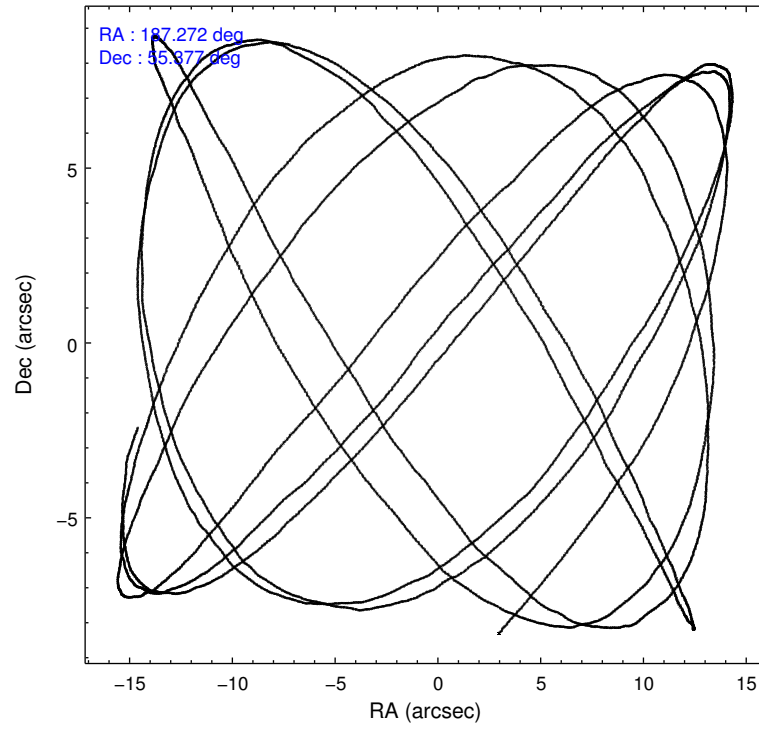
	ccd 2	ccd 3	ccd 5	ccd 6	ccd 7	ccd 8
level 1 events	26589	25332	25146	26562	15534	32155
rejected events	24335	23202	9781	24115	6646	24383
rejected %	91%	91%	38%	90%	42%	75%

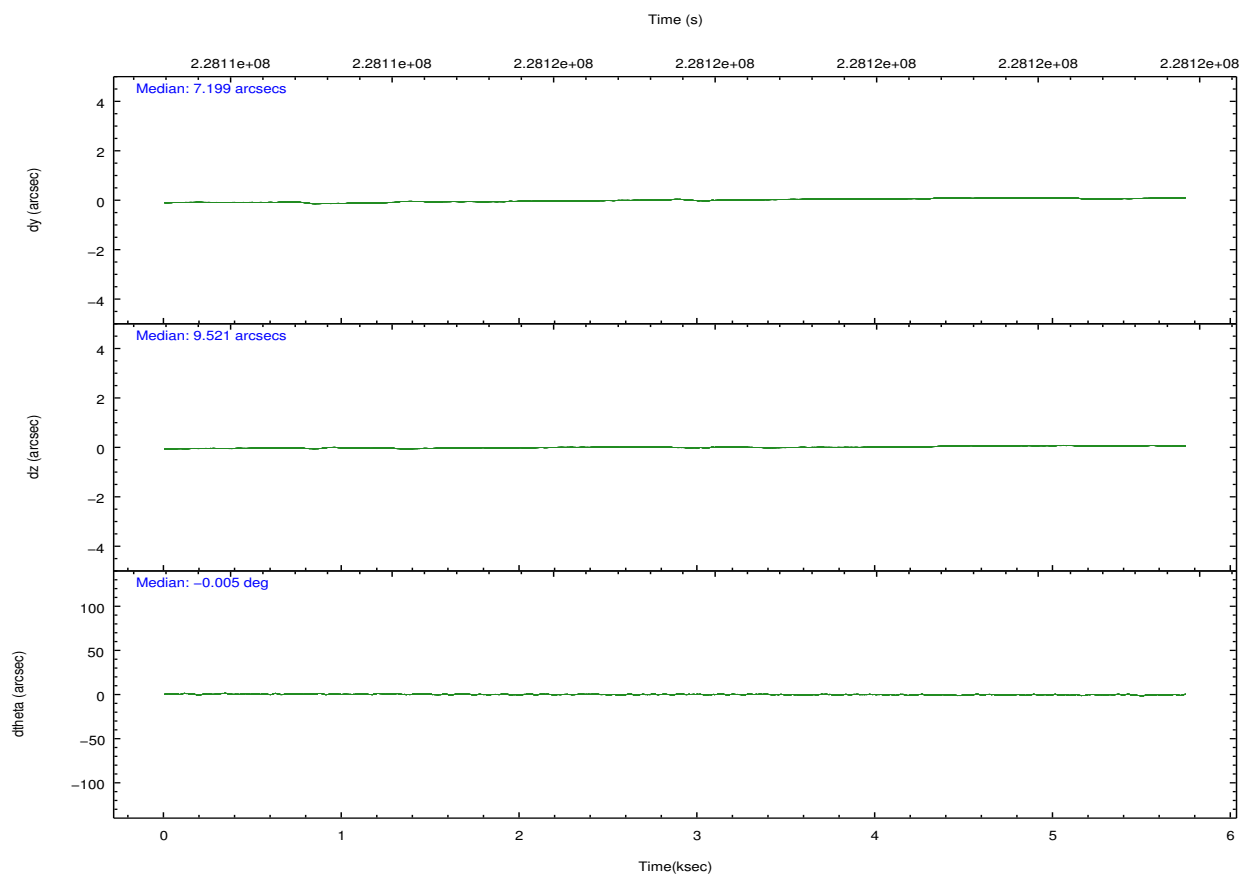
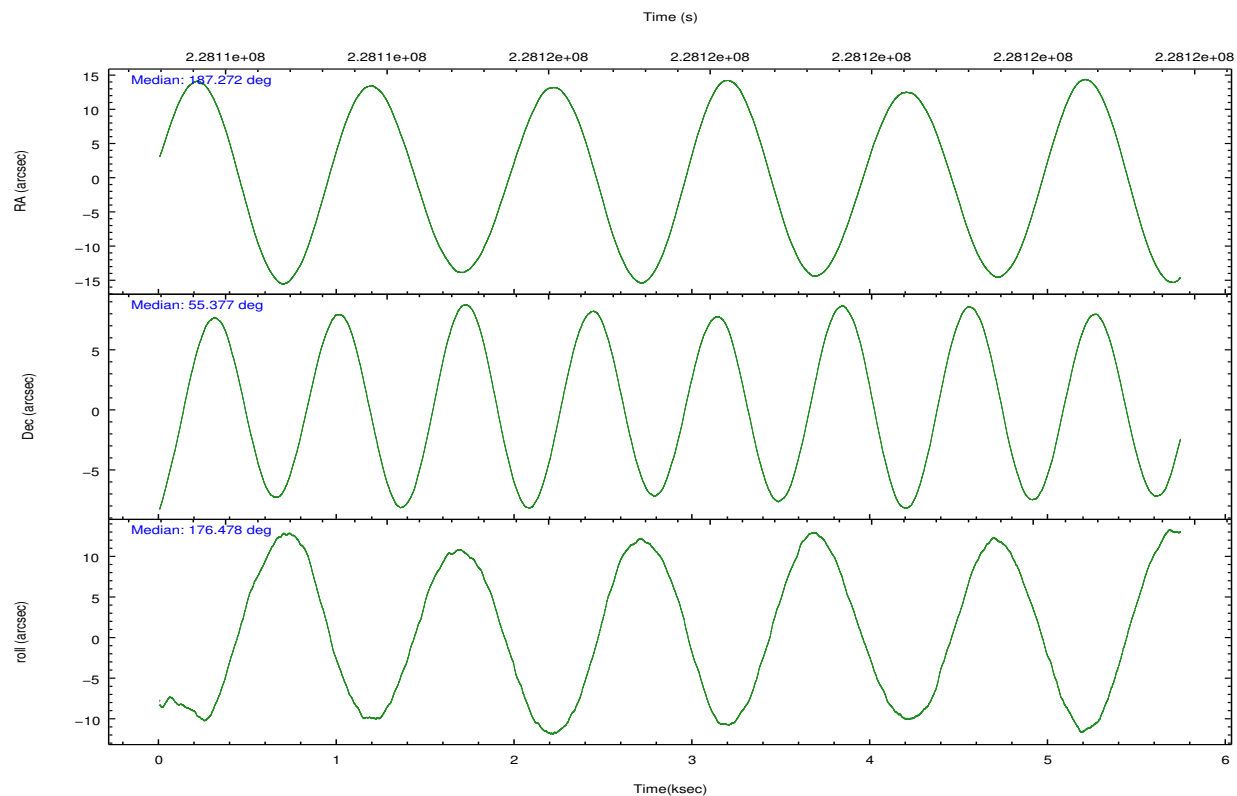
	ccd 2	ccd 3	ccd 5	ccd 6	ccd 7	ccd 8
grade 0 events	892	839	2872	1010	1147	2210
	3%	3%	11%	3%	7%	6%
grade 1 events	15	14	47	17	41	17
	0%	0%	0%	0%	0%	0%
grade 2 events	502	446	4724	496	2080	1877
	1%	1%	18%	1%	13%	5%
grade 3 events	234	245	868	282	883	825
	0%	0%	3%	1%	5%	2%
grade 4 events	276	274	744	253	926	706
	1%	1%	2%	0%	5%	2%
grade 5 events	397	551	2182	509	1628	971
	1%	2%	8%	1%	10%	3%
grade 6 events	351	330	6177	409	3860	2158
	1%	1%	24%	1%	24%	6%
grade 7 events	23922	22633	7532	23586	4969	23391
	89%	89%	29%	88%	31%	72%

2.2 Compared Parameters

Parameter	Planned	Actual	Parameter	Planned	Actual
Instrument	ACIS	ACIS	Obspar format version number	7	7
Detector	ACIS-235678	ACIS-235678	Obspar file type	PREDICTED	ACTUAL
Grating	NONE	NONE	Obspar update status	NONE	UPDATED
Data mode	VFAINT	VFAINT	Number of optional ACIS chips dropped	0	0
Observation mode	POINTING	POINTING	On-chip summing requested	N	N
[deg] Pointing RA	187.314820	187.272260425426	Subarray requested	NONE	NONE
[deg] Pointing Dec	55.389943	55.3774194538803	Alternating exposures requested	N	N
[deg] Pointing Roll	176.292282	176.4839384070374	[s] Primary exposure time	0.000000	3.2
[mm] SIM focus pos	-0.684267	-0.6828225247311905			
[mm] SIM defocus	0	0.001444936568705701			
[mm] SIM translation stage pos	-190.132523	-190.1425803651734			
[mm] SIM translation stage offset	0	0.01005778216563158			
[s] Observation start time (MET)	228113629.184000	228112387.42457			
Observation start date	2005-03-25T04:52:45	2005-03-25T04:33:07			
[s] Observation end time (MET)	228118629.184000	228119266.71238			
Observation end date	2005-03-25T06:16:05	2005-03-25T06:27:46			
Read mode	TIMED	TIMED			

2.3 Aspect



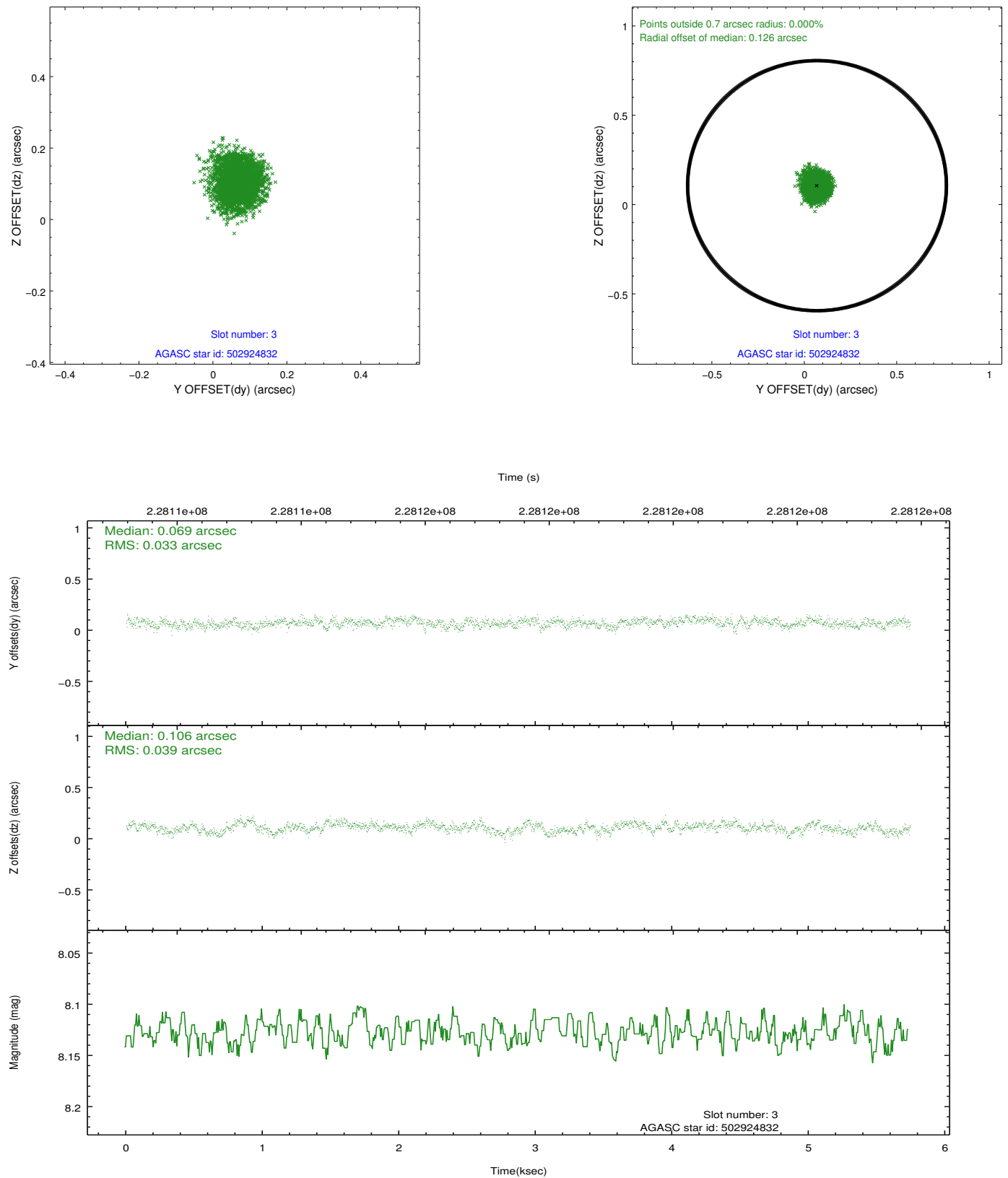


Slot Statistics

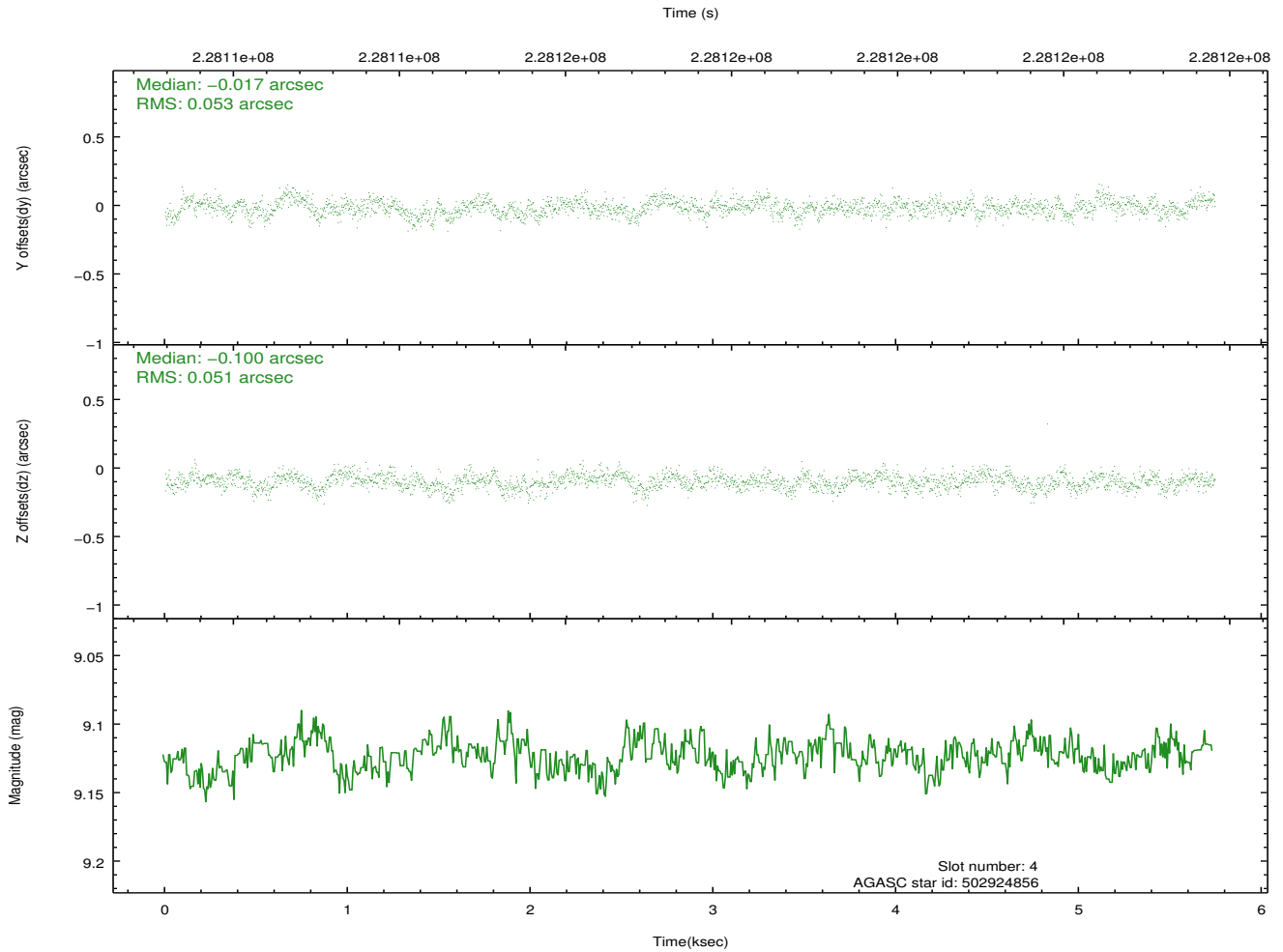
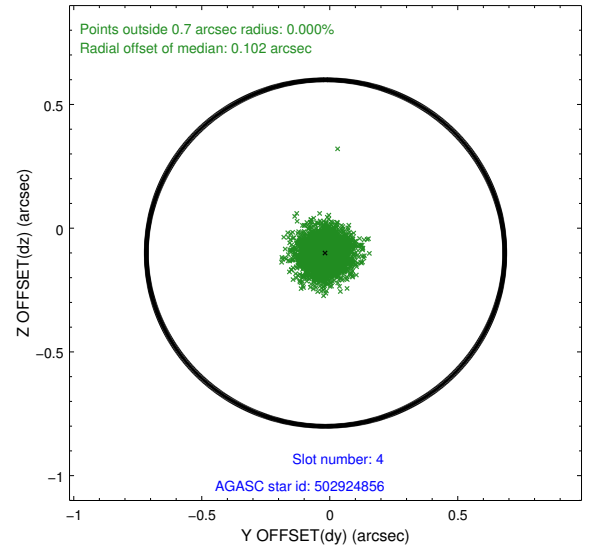
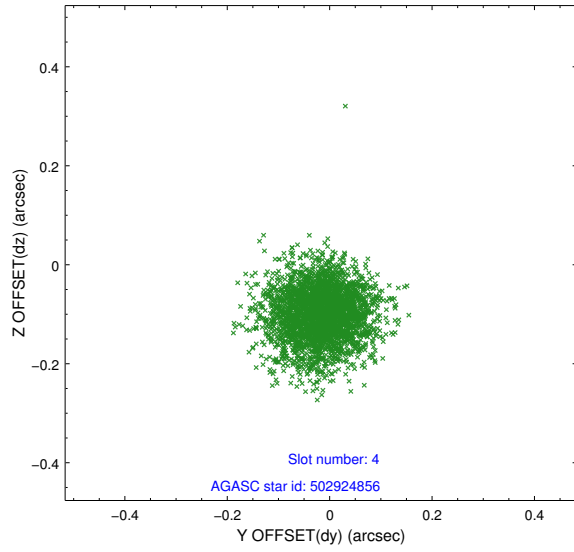
slot	status	id	mag	n_pts	med_dy	med_dz	dr1	dr2	ra	dec	mean_y	mean_z
0	FID	ACIS-S-2	7.10	1401	-0.045	-0.039	0.007	0.011	0.000000	0.000000	-759.96	-1730.76
1	FID	ACIS-S-4	7.21	1401	0.102	0.032	0.006	0.011	0.000000	0.000000	2152.95	176.77
2	FID	ACIS-S-5	7.23	1401	-0.088	0.015	0.007	0.012	0.000000	0.000000	-1811.55	171.54
3	GUIDE	502924832	8.13	2801	0.069	0.106	0.056	0.087	186.344916	55.510430	2002.33	-318.36
4	GUIDE	502924856	9.12	2801	-0.017	-0.100	0.078	0.128	186.527158	55.910797	1708.86	-1777.28
5	GUIDE	503842832	9.27	2802	-0.213	-0.095	0.092	0.151	187.959176	55.129024	-1381.88	844.82
6	GUIDE	503845368	9.19	2801	0.053	-0.019	0.082	0.133	188.336031	55.292341	-2110.91	200.13
7	GUIDE	503845568	9.34	2800	0.104	0.103	0.092	0.154	188.355103	55.005970	-2231.27	1224.92

2.4 Star Slots

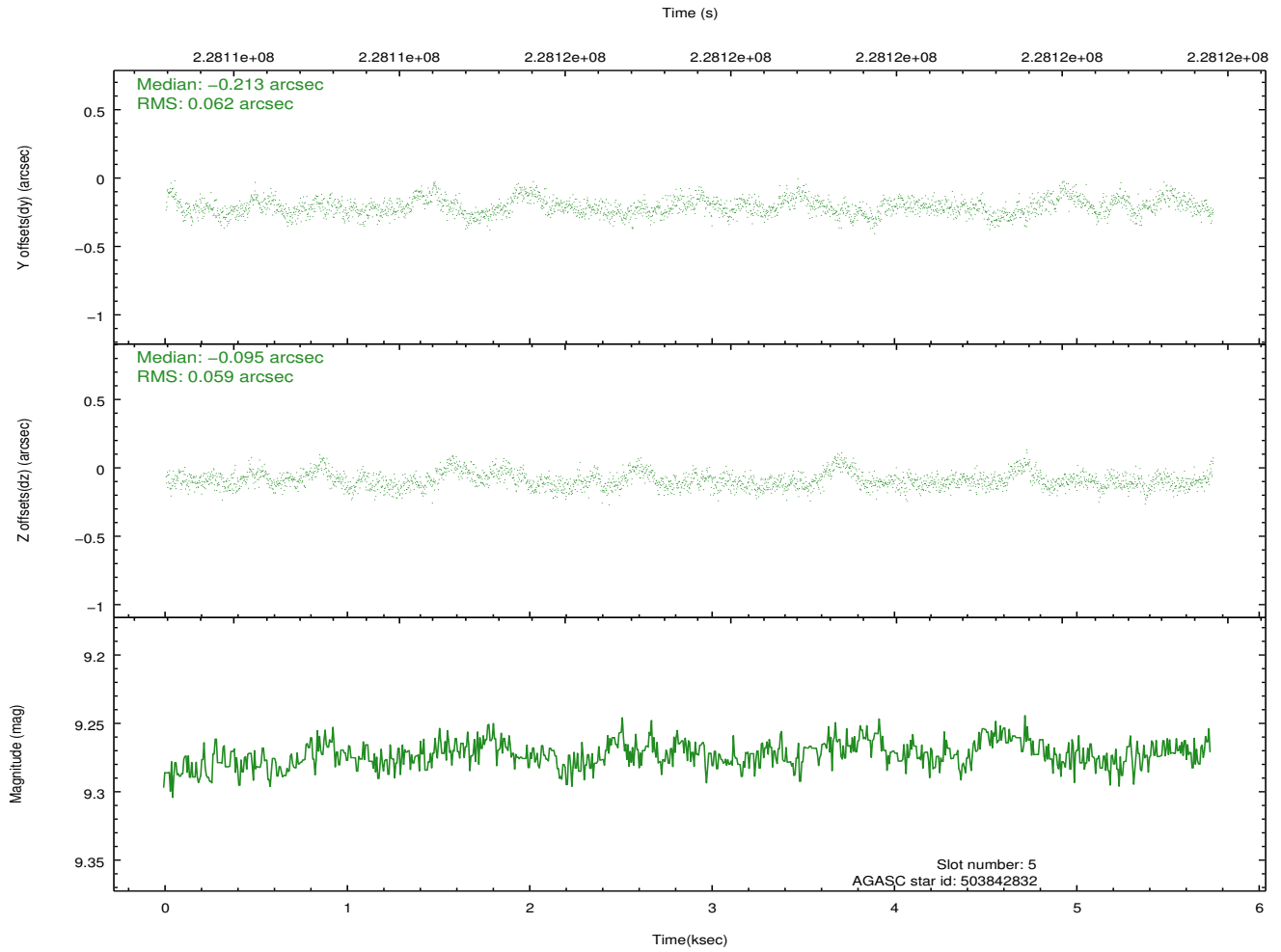
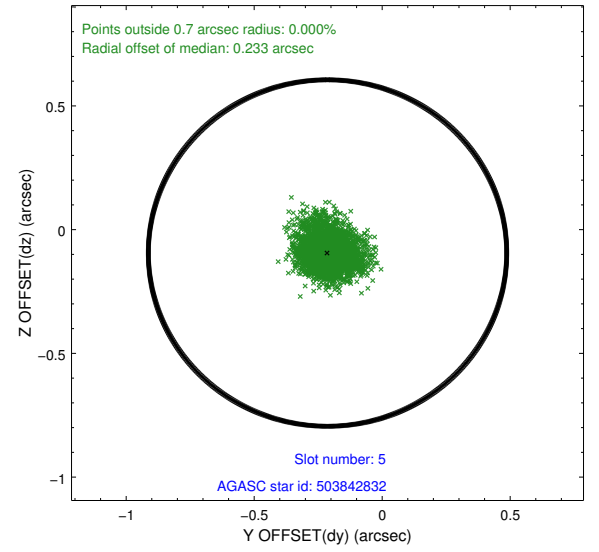
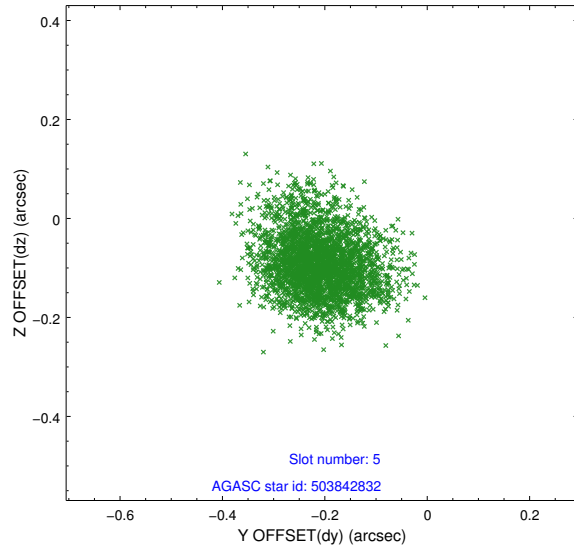
2.4.1 Slot 3



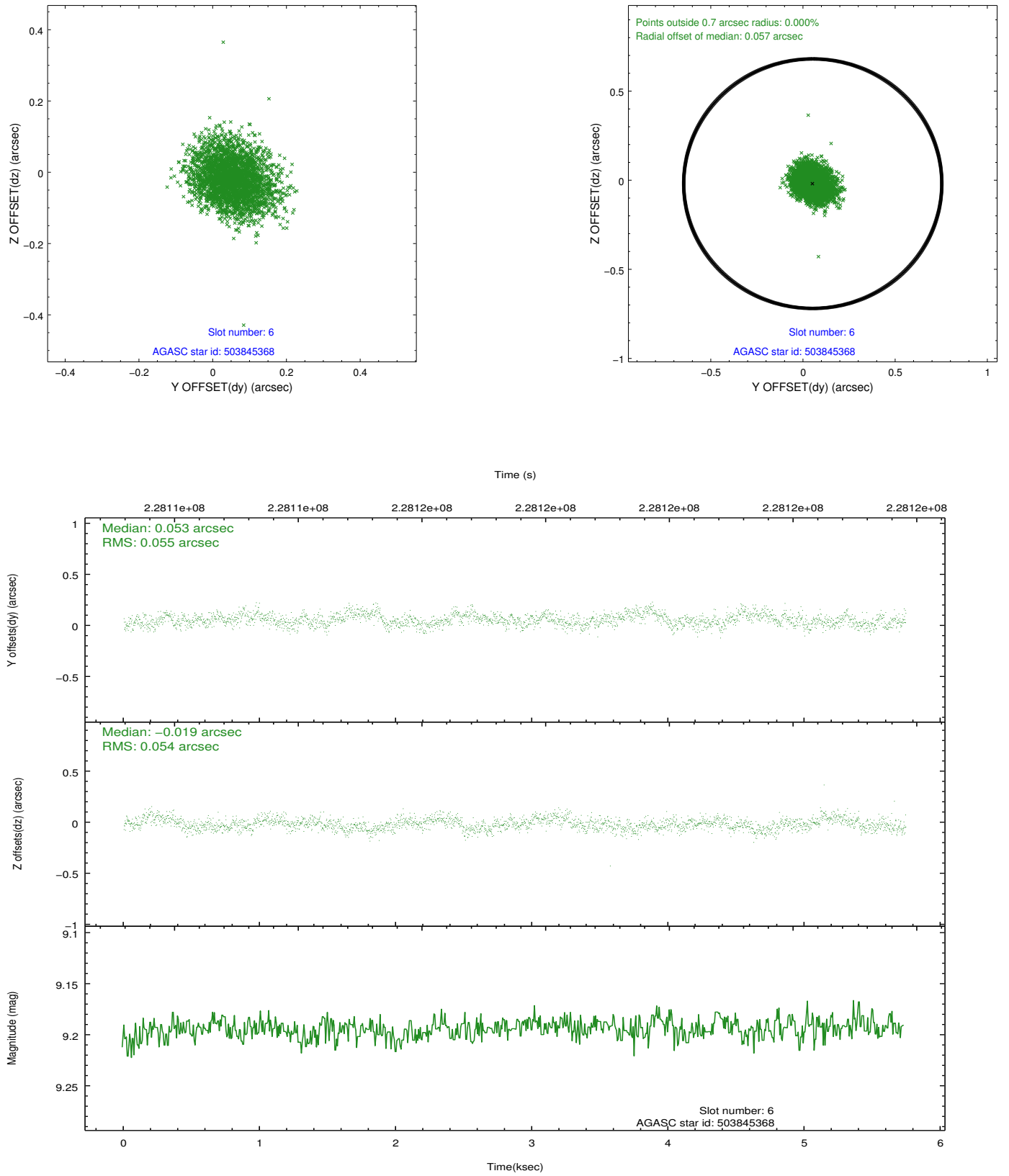
2.4.2 Slot 4



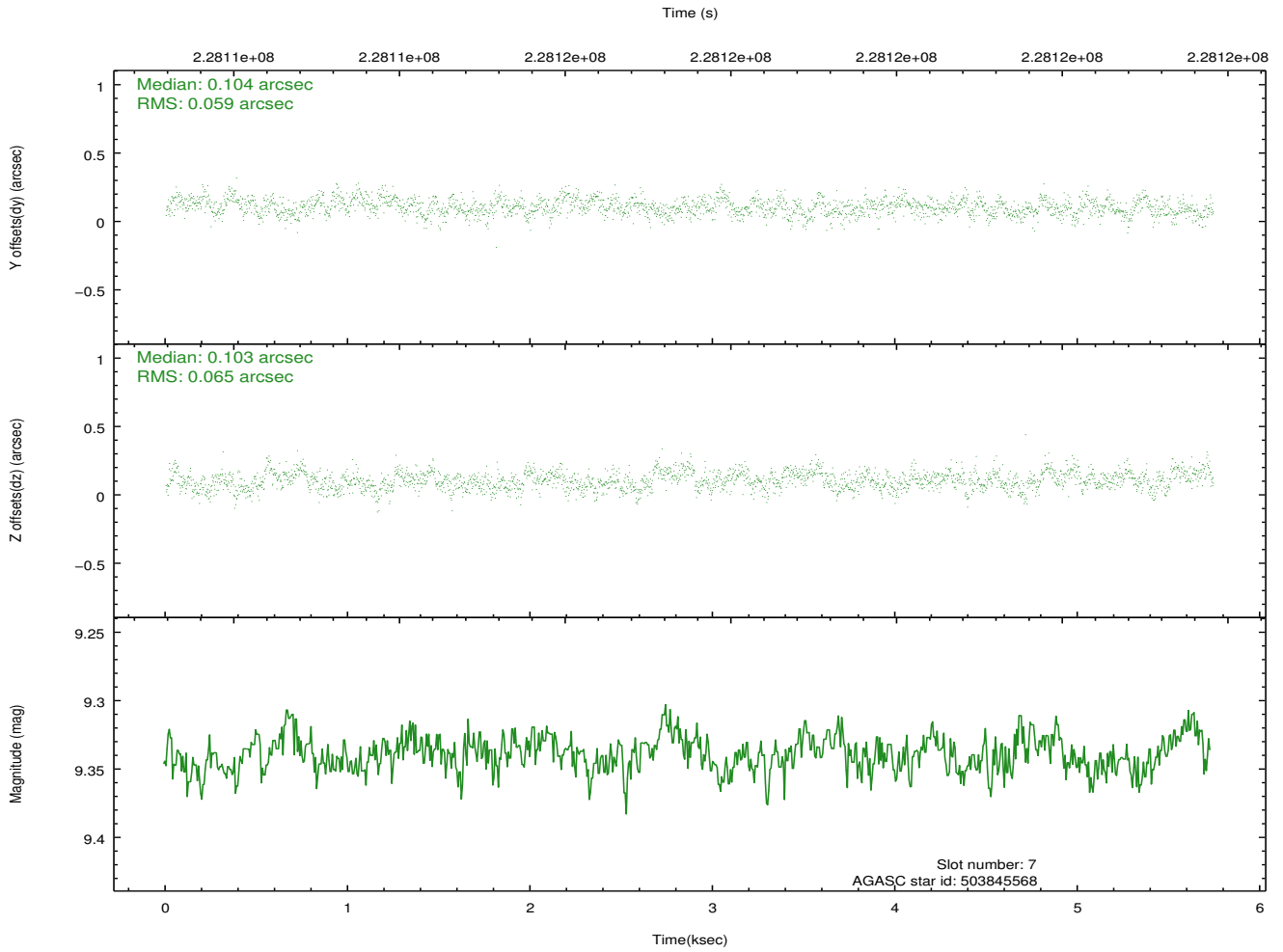
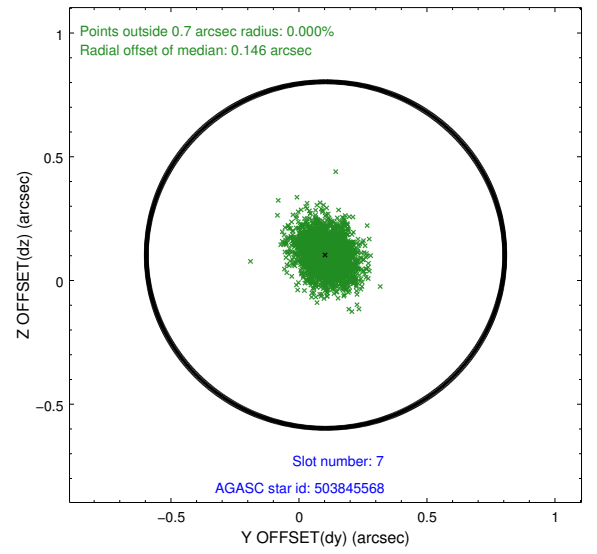
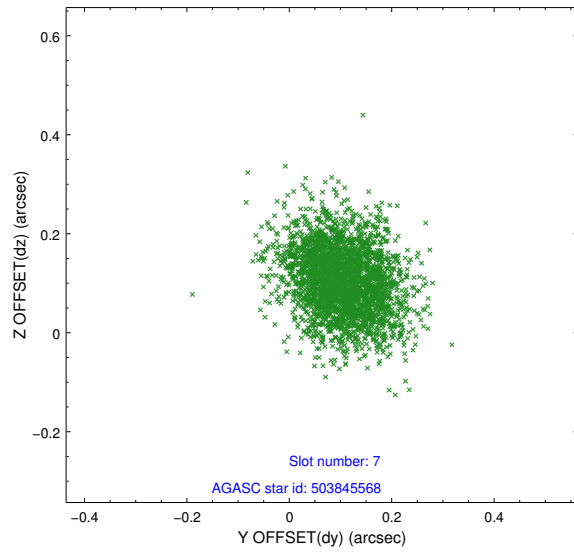
2.4.3 Slot 5



2.4.4 Slot 6

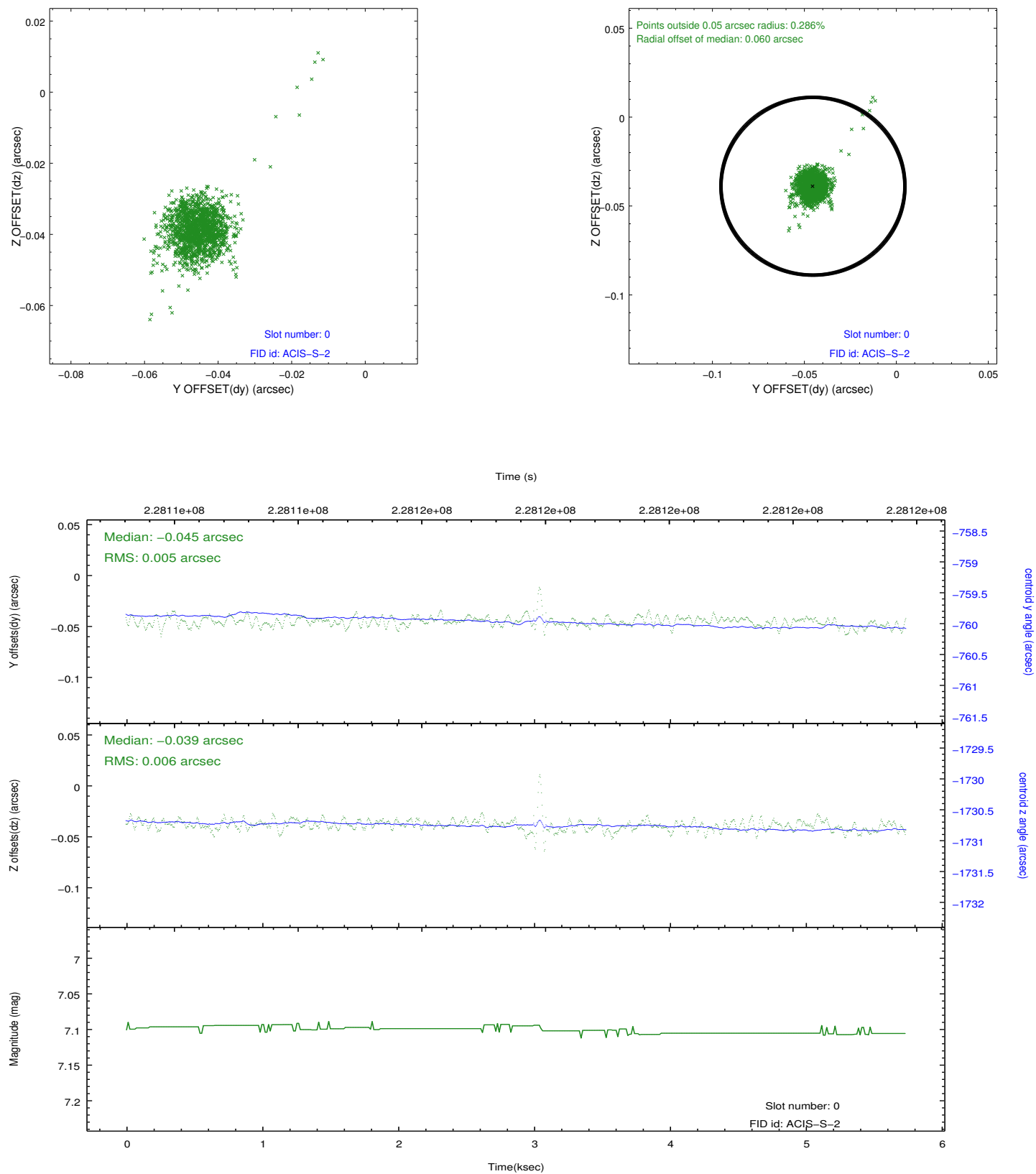


2.4.5 Slot 7

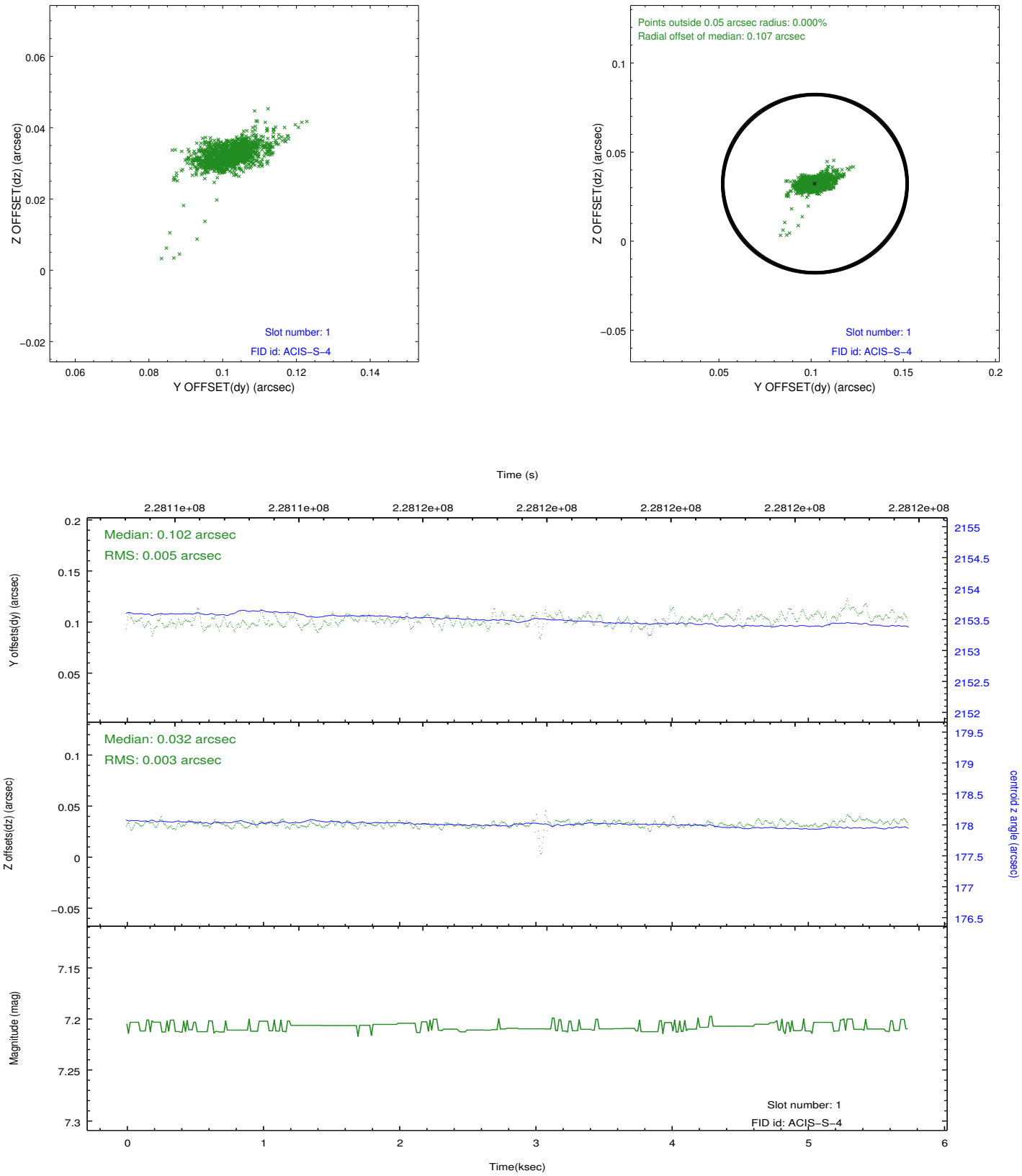


2.5 FID Slots

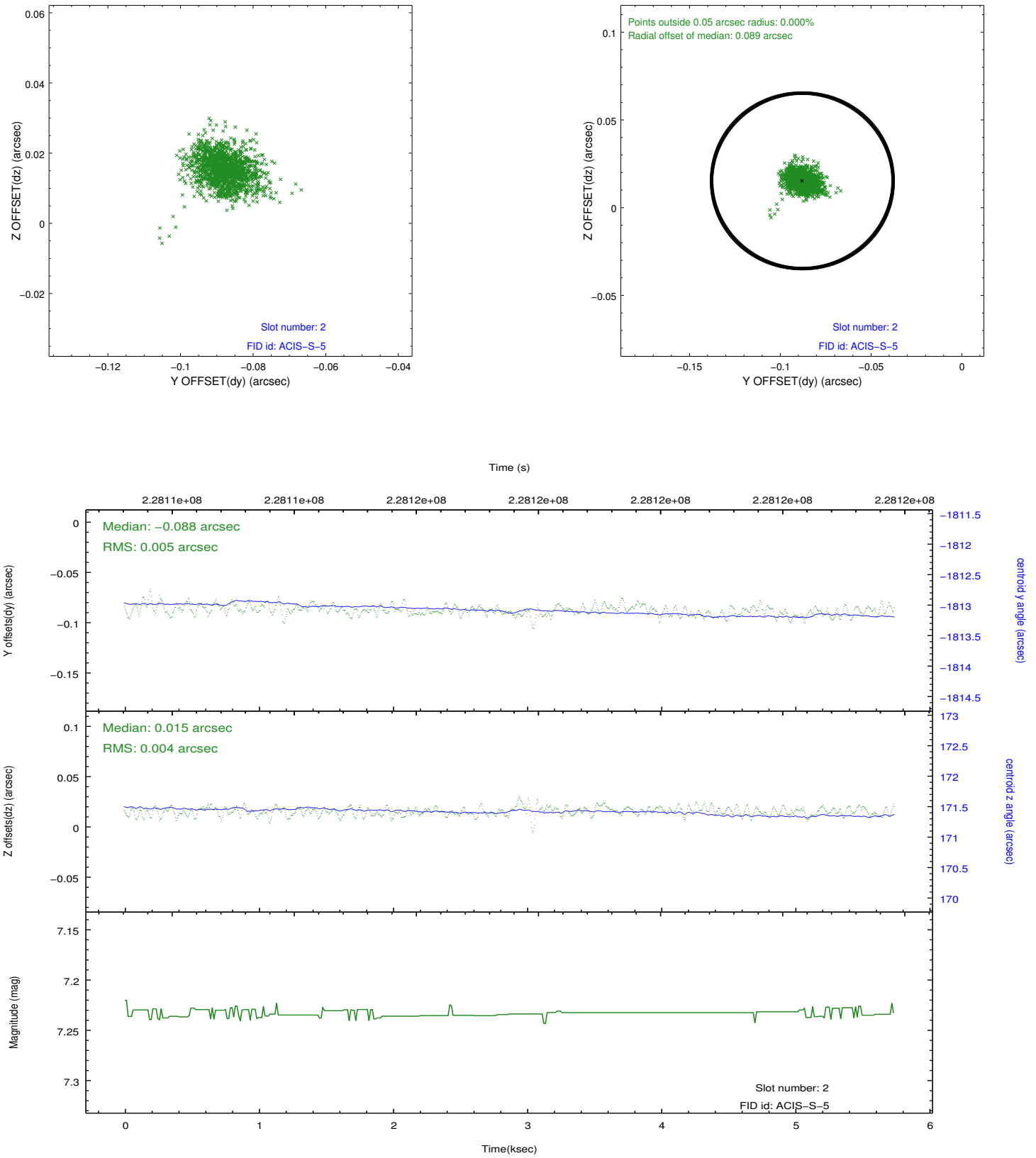
2.5.1 Slot 0



2.5.2 Slot 1



2.5.3 Slot 2



A Summary

A.1 Status

V&V Scientist	Jen Lauer
V&V Date (YYYY-MM-DD)	2013.01.14
V&V Edition	1
V&V Disposition and Status	OK
V&V Charge Time	4.956799

A.2 Comments