

V&V Reference Report

L2 ASCDS Version : 7.6.7.1

Observation 5720 - L2 Version 002
Chandra X-Ray Center

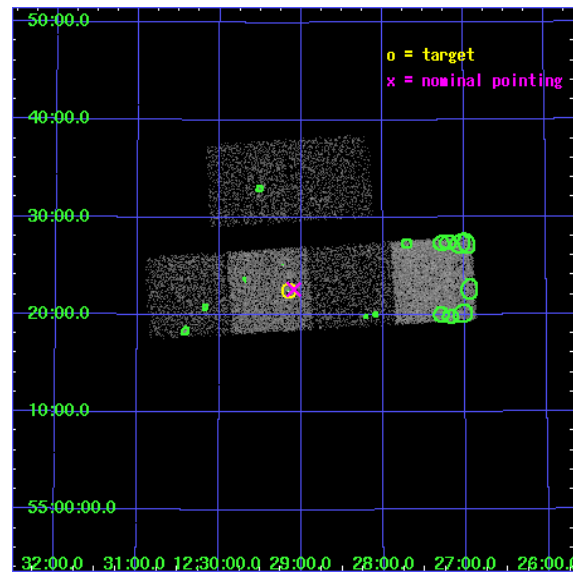
L2 Processing Date : Mar 17 2006

Contents

1	Front	2
2	OBI	3
2.1	OBI	3
2.1.1	Images	3
2.1.2	Bias	3
2.1.3	Parameters	4
2.1.4	Events	4
2.2	Compared Parameters	5
2.3	Aspect	6
2.4	Star Slots	9
2.4.1	Slot 3	9
2.4.2	Slot 4	10
2.4.3	Slot 5	11
2.4.4	Slot 6	12
2.4.5	Slot 7	13
2.5	FID Slots	14
2.5.1	Slot 0	14
2.5.2	Slot 1	15
2.5.3	Slot 2	16
3	Point Sources	17
A	Summary	18
A.1	Status	18
A.2	Comments	18

1 Front

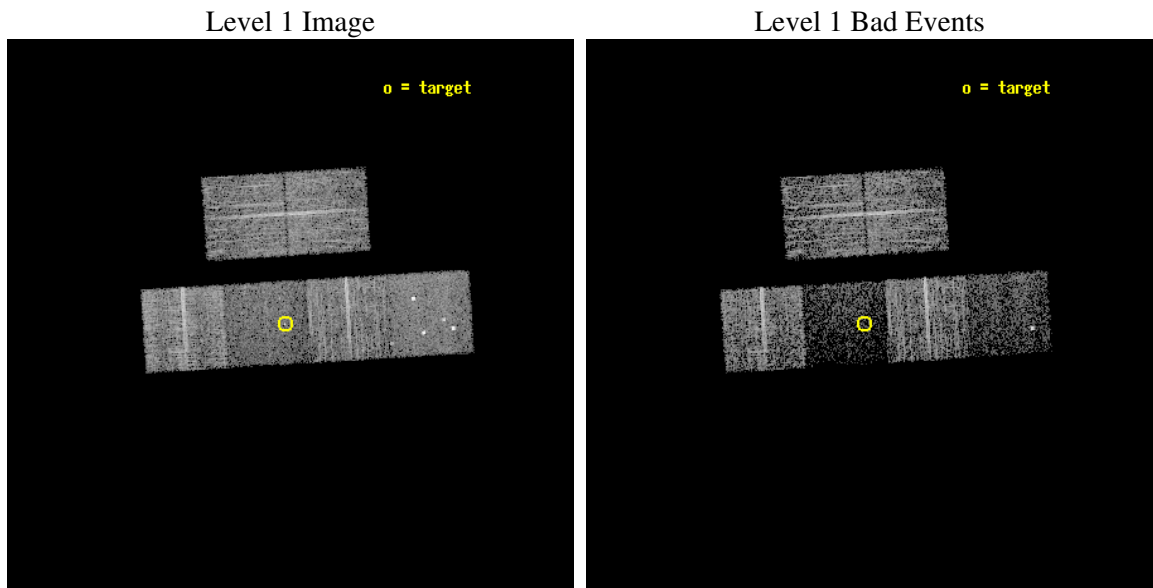
seq_num	701142
obs_id	5720
title	What kind of Jets does Nature make? X-ray characterization of the FIRST Flat Spectrum Sample
observer	Dr. Giovanni Fossati
object	87GB 1226+5539
dtcycle	0
cycle	P
ra_targ	187.28875
dec_targ	55.375194
ra_nom	187.27230921509
dec_nom	55.377417674521
roll_nom	176.48389825063
revision	2
ontime	4956.7999815345
livetime	4894.0339955417
ontime2	4956.7999815345
ontime3	4956.7999815345
ontime5	4956.7999815345
ontime6	4956.7999815345
ontime7	4956.7999815345
ontime8	4956.7999815345
l2events	28413



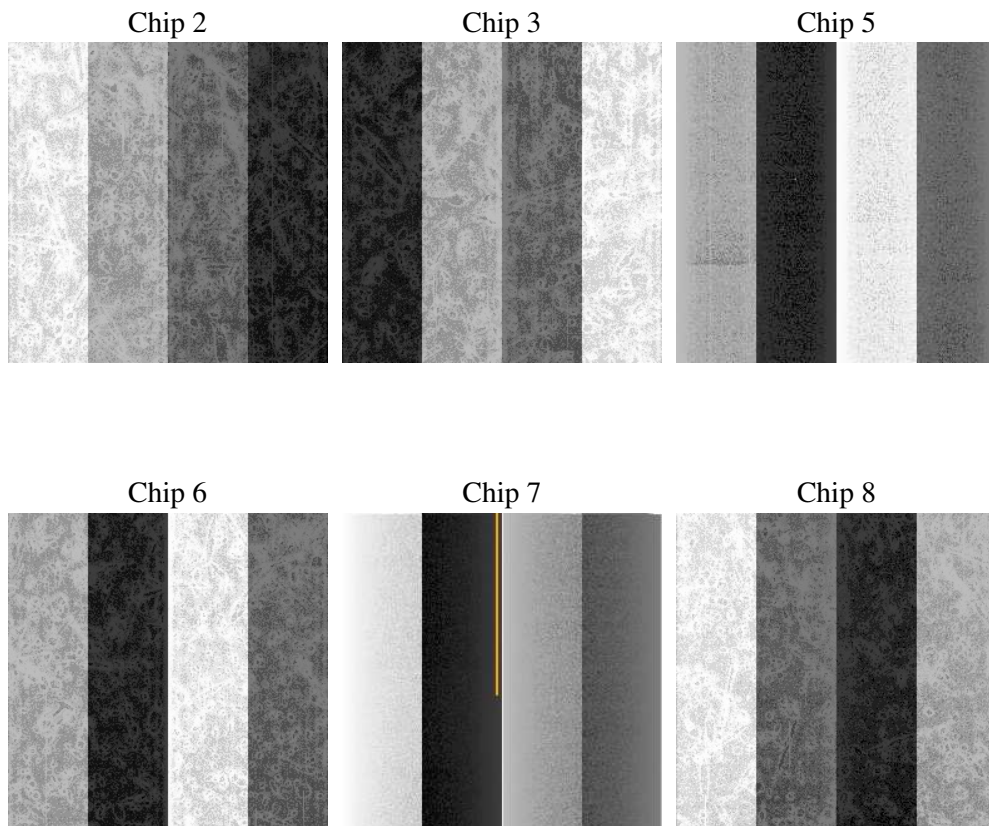
2 OBI

2.1 OBI

2.1.1 Images



2.1.2 Bias



2.1.3 Parameters

obi_num	0
ascdsver	7.6.7.1
caldsver	3.2.1
date	2006-03-17T13:37:11
revision	2

sched_exp_time	5000.000000
ontime	4961.9833052754
ontime2	4961.9832853973
ontime3	4961.9832853973
ontime5	4961.9833052754
ontime6	4961.9833052754
ontime7	4961.9833052754
ontime8	4961.9832853973
l1events	151318

2.1.4 Events

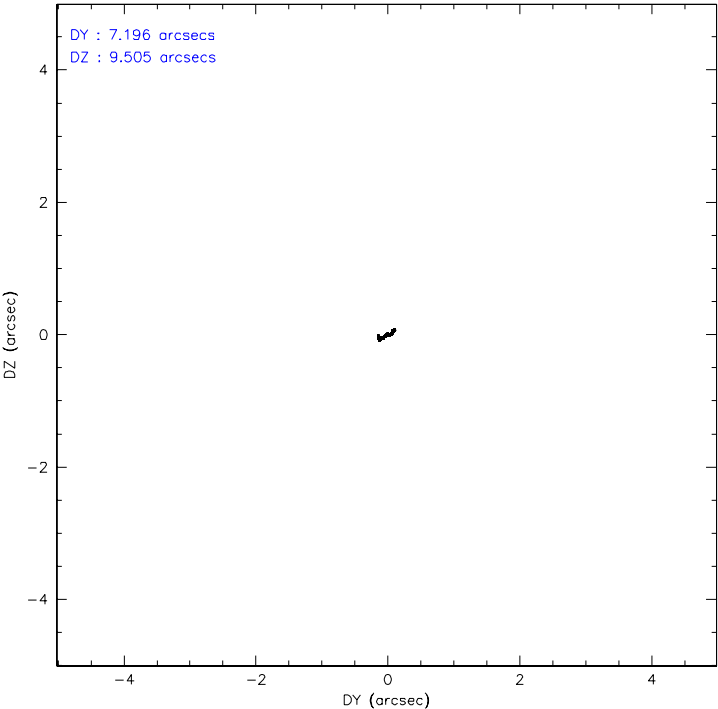
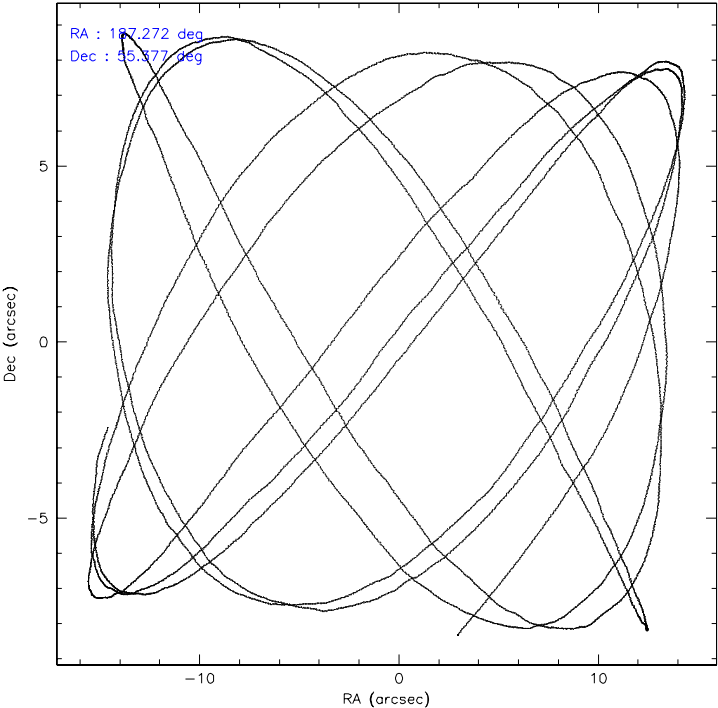
	ccd 2	ccd 3	ccd 5	ccd 6	ccd 7	ccd 8
level 1 events	26589	25332	25146	26562	15534	32155
rejected events	24336	23200	10245	24114	7163	24382
rejected %	91%	91%	40%	90%	46%	75%

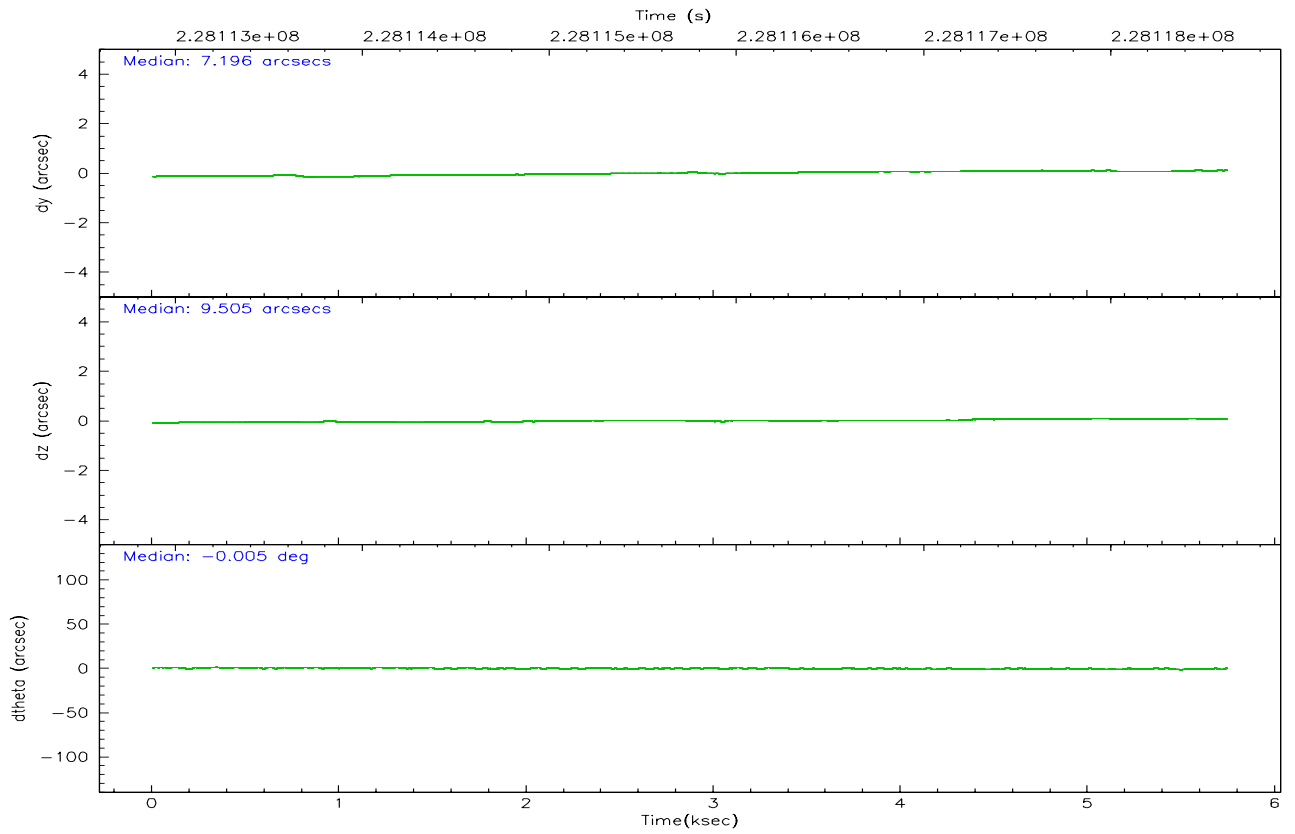
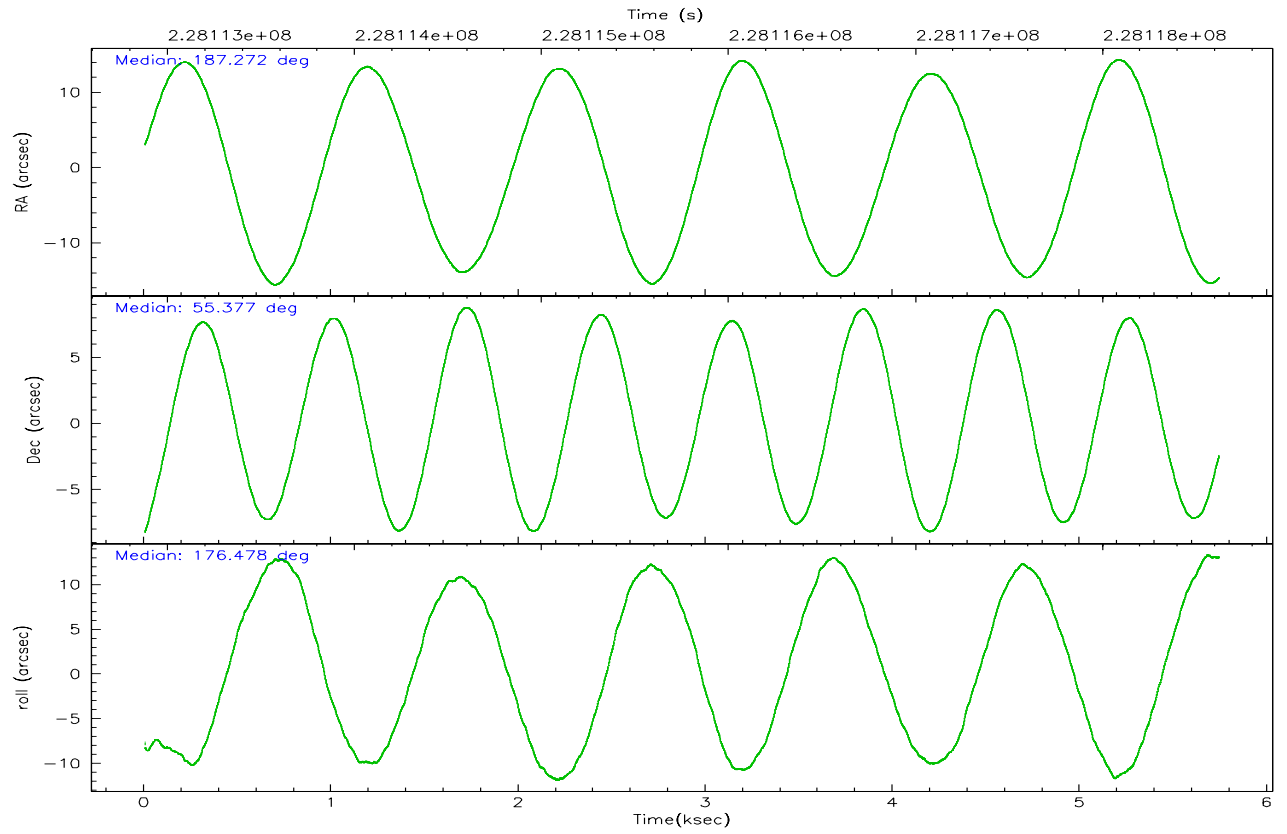
	ccd 2	ccd 3	ccd 5	ccd 6	ccd 7	ccd 8
grade 0 events	892	839	2354	1010	820	2210
	3%	3%	9%	3%	5%	6%
grade 1 events	15	14	25	17	28	17
	0%	0%	0%	0%	0%	0%
grade 2 events	502	446	4983	496	2327	1877
	1%	1%	19%	1%	14%	5%
grade 3 events	234	245	542	282	589	825
	0%	0%	2%	1%	3%	2%
grade 4 events	276	274	483	253	611	706
	1%	1%	1%	0%	3%	2%
grade 5 events	397	551	1569	509	1262	971
	1%	2%	6%	1%	8%	3%
grade 6 events	351	330	6549	409	4029	2158
	1%	1%	26%	1%	25%	6%
grade 7 events	23922	22633	8641	23586	5868	23391
	89%	89%	34%	88%	37%	72%

2.2 Compared Parameters

Parameter	Planned	Actual	Parameter	Planned	Actual
Instrument	ACIS	ACIS	Obspar format version number	6	6
Detector	ACIS-235678	ACIS-235678	Obspar file type	PREDICTED	ACTUAL
Grating	NONE	NONE	Obspar update status	NONE	UPDATED
Data mode	VFAINT	VFAINT	On-chip summing requested	N	N
Observation mode	POINTING	POINTING	Subarray requested	NONE	NONE
Pointing RA	187.314820	187.2723092150864	Alternating exposures requested	N	N
Pointing Dec	55.389943	55.37741767452128	Primary exposure time	0.000000	3.2
Pointing Roll	176.292282	176.4838982506297			
SIM focus pos (mm)	-0.684267	-0.6828225247311905			
SIM defocus (mm)	0	0.001444936568705701			
SIM translation stage pos (mm)	-190.132523	-190.1425803651734			
SIM translation stage offset (mm)	0	0.01005778216563158			
Observation start time	228113629.184000	228112387.42457			
Observation start date	2005-03-25T04:52:45	2005-03-25T04:33:07			
Observation end time	228118629.184000	228119266.71238			
Observation end date	2005-03-25T06:16:05	2005-03-25T06:27:46			
Read mode	TIMED	TIMED			

2.3 Aspect



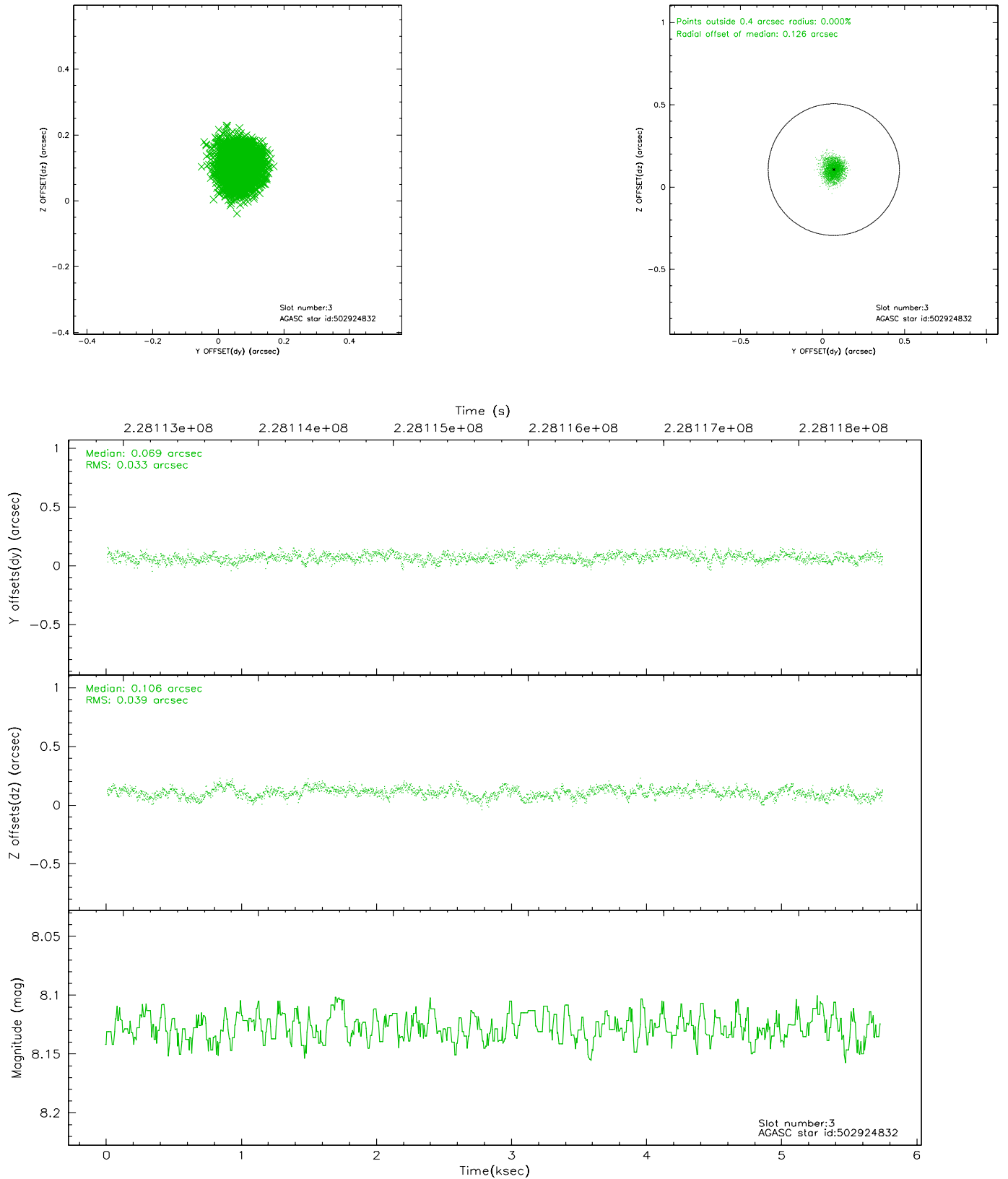


Slot Statistics

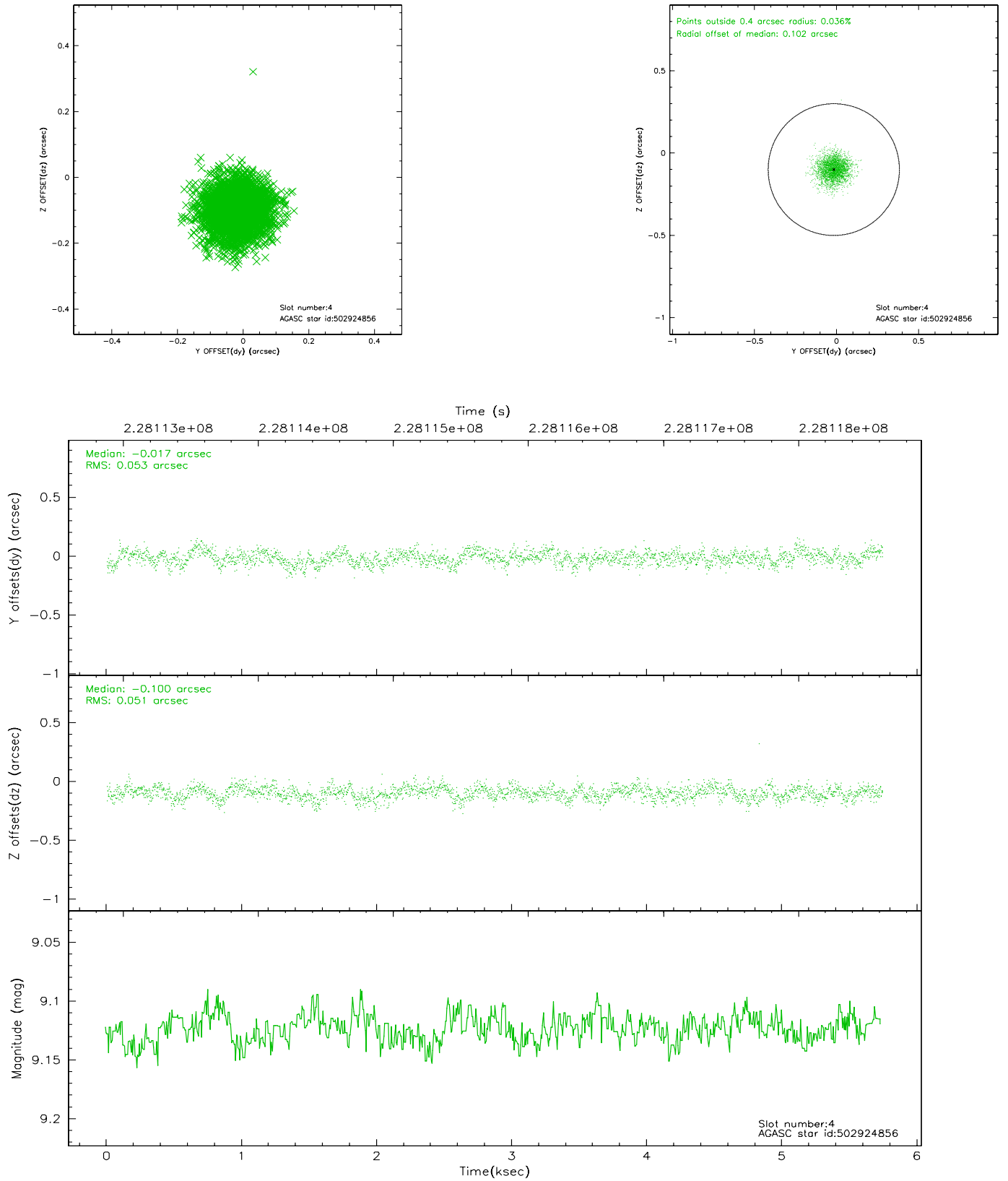
slot	status	id	mag	n_pts	med_dy	med_dz	dr1	dr2	ra	dec	mean_y	mean_z
0	FID	ACIS-S-2	7.10	1401	-0.034	-0.016	0.007	0.012	0.000000	0.000000	-759.95	-1730.72
1	FID	ACIS-S-4	7.21	1401	0.060	0.020	0.006	0.011	0.000000	0.000000	2152.92	176.78
2	FID	ACIS-S-5	7.23	1401	-0.057	0.004	0.007	0.012	0.000000	0.000000	-1811.51	171.55
3	GUIDE	502924832	8.13	2801	0.069	0.106	0.056	0.087	186.344916	55.510430	2002.33	-318.36
4	GUIDE	502924856	9.12	2801	-0.017	-0.100	0.078	0.128	186.527158	55.910797	1708.86	-1777.28
5	GUIDE	503842832	9.27	2802	-0.213	-0.095	0.092	0.151	187.959176	55.129024	-1381.88	844.82
6	GUIDE	503845368	9.19	2801	0.053	-0.019	0.082	0.133	188.336031	55.292341	-2110.91	200.13
7	GUIDE	503845568	9.34	2800	0.104	0.103	0.092	0.154	188.355103	55.005970	-2231.27	1224.92

2.4 Star Slots

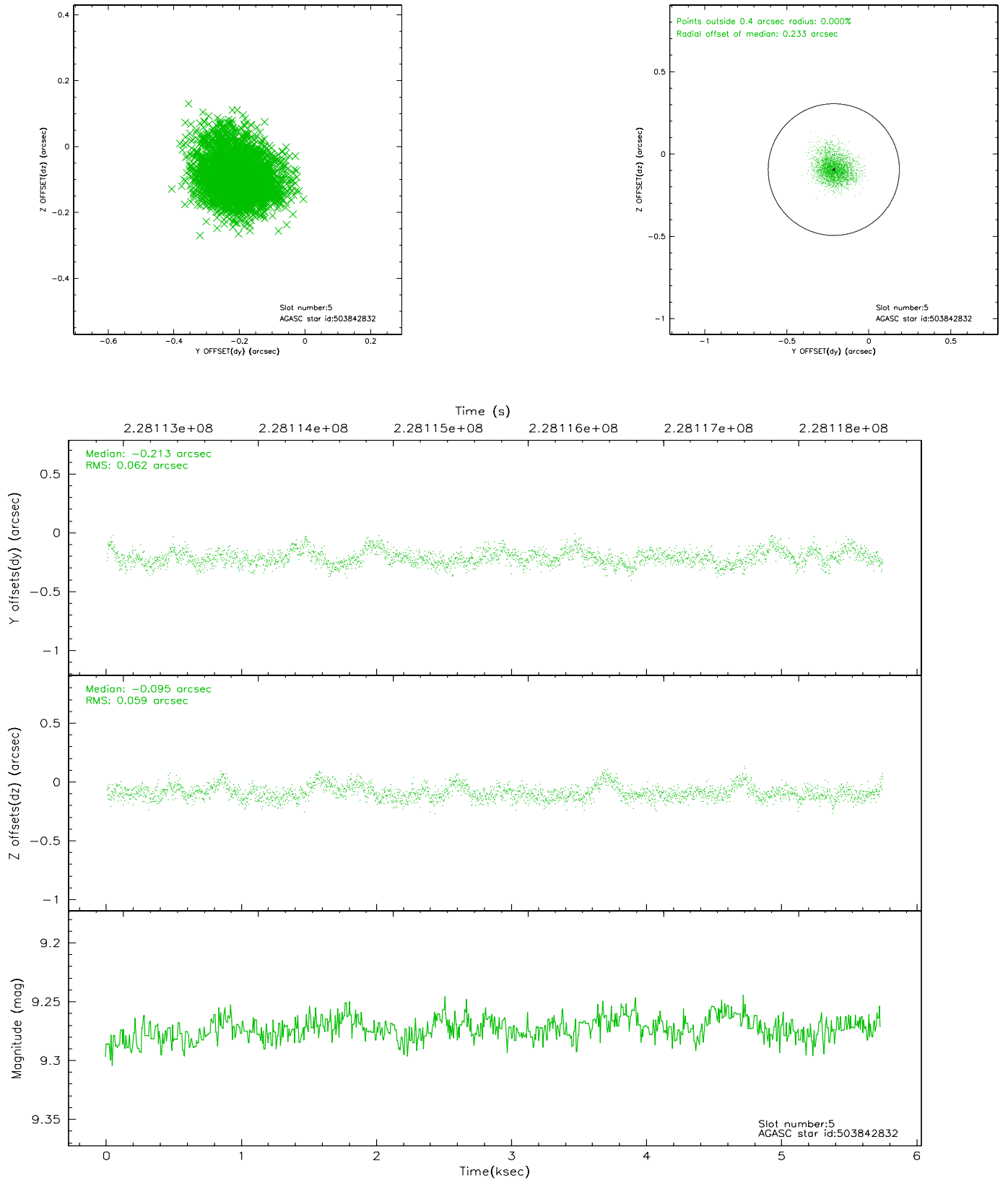
2.4.1 Slot 3



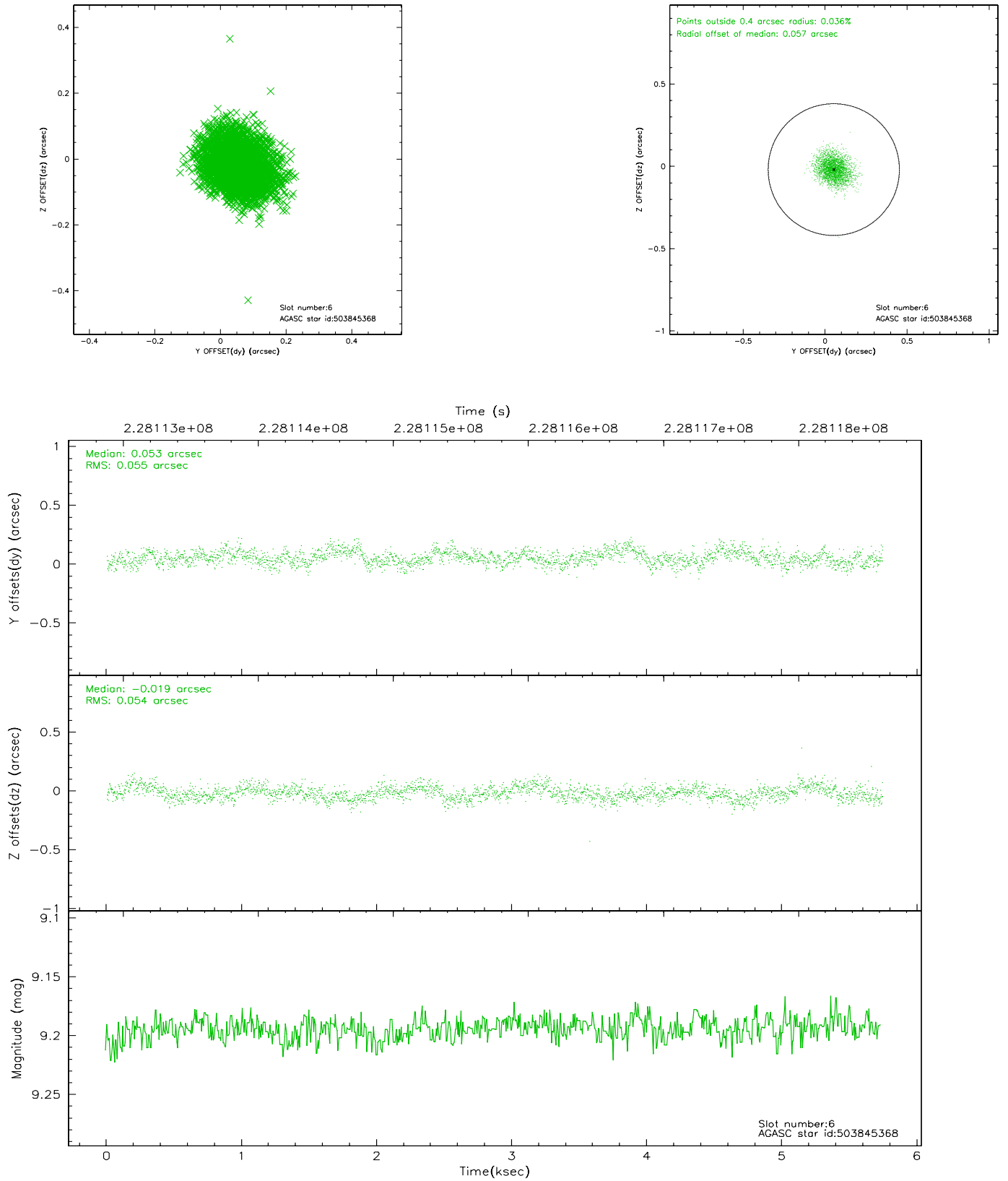
2.4.2 Slot 4



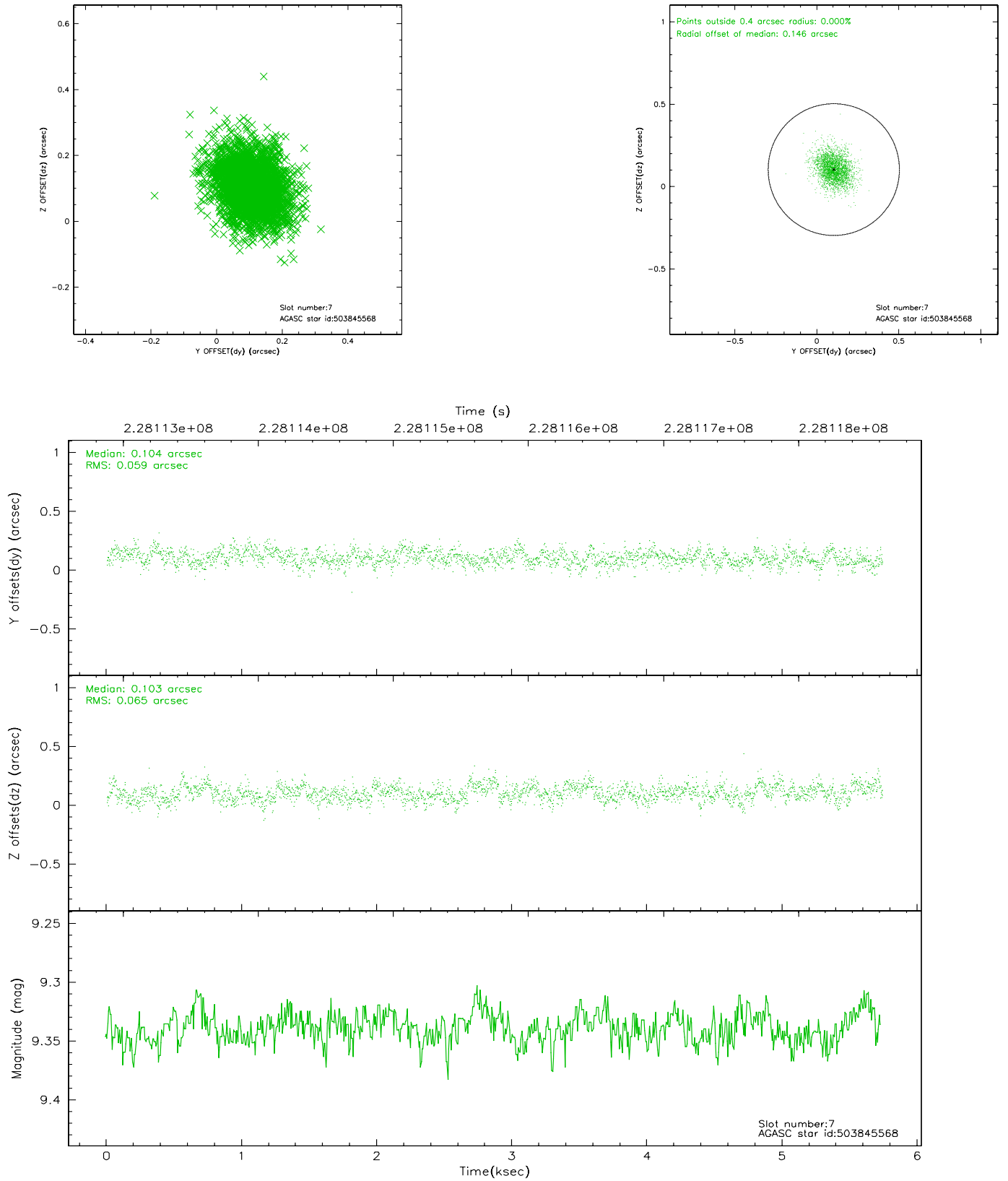
2.4.3 Slot 5



2.4.4 Slot 6

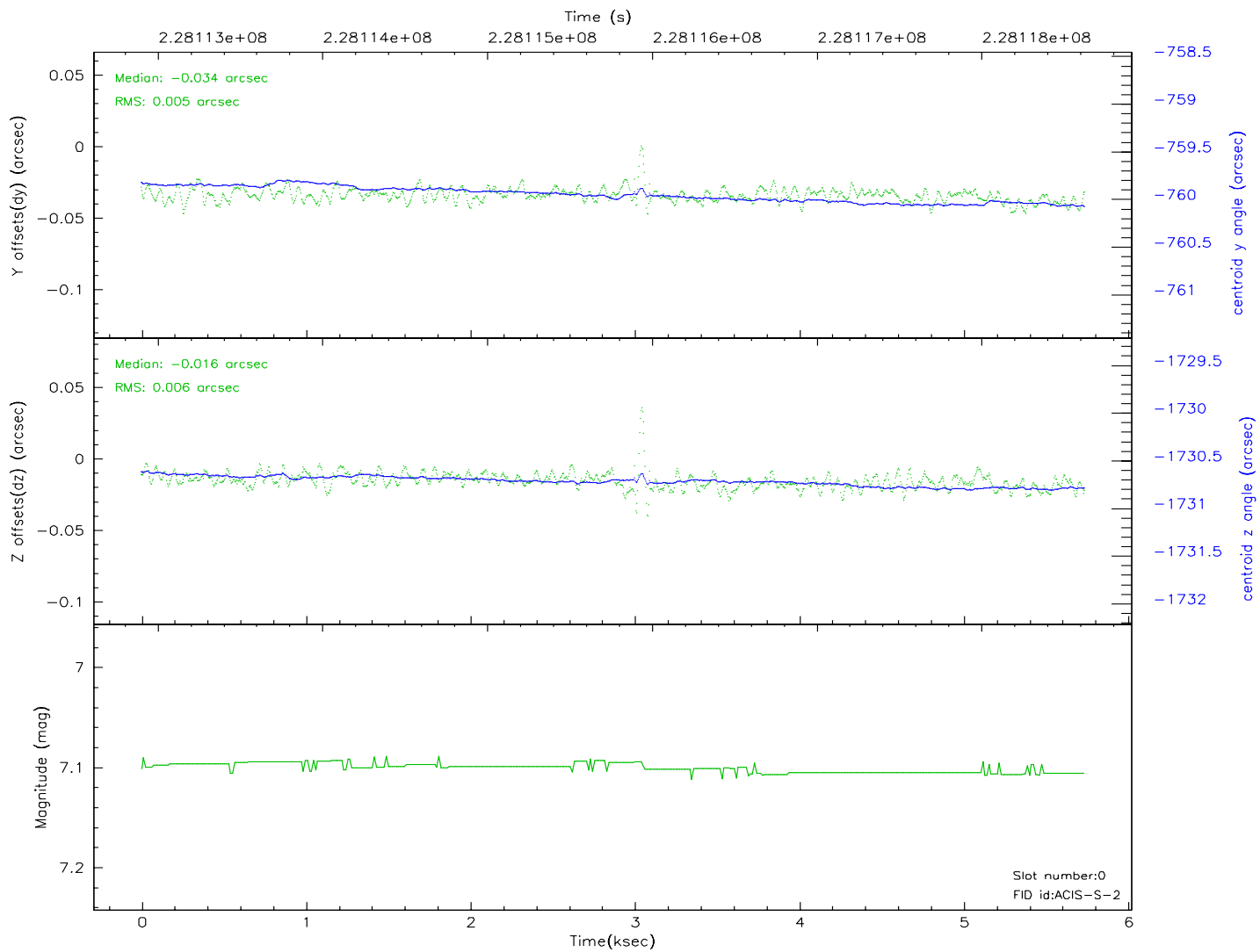
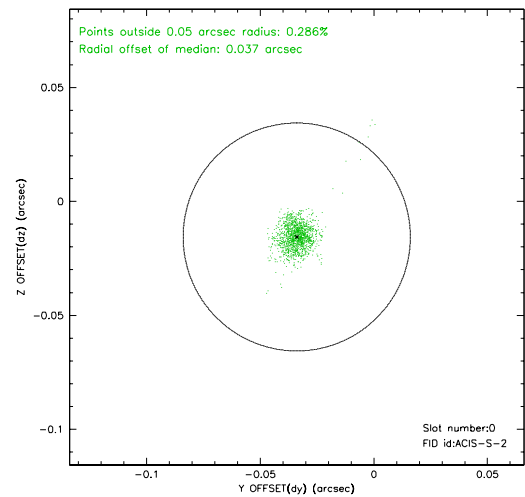
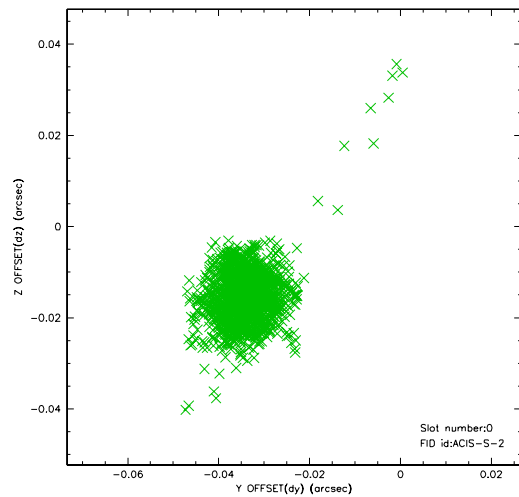


2.4.5 Slot 7

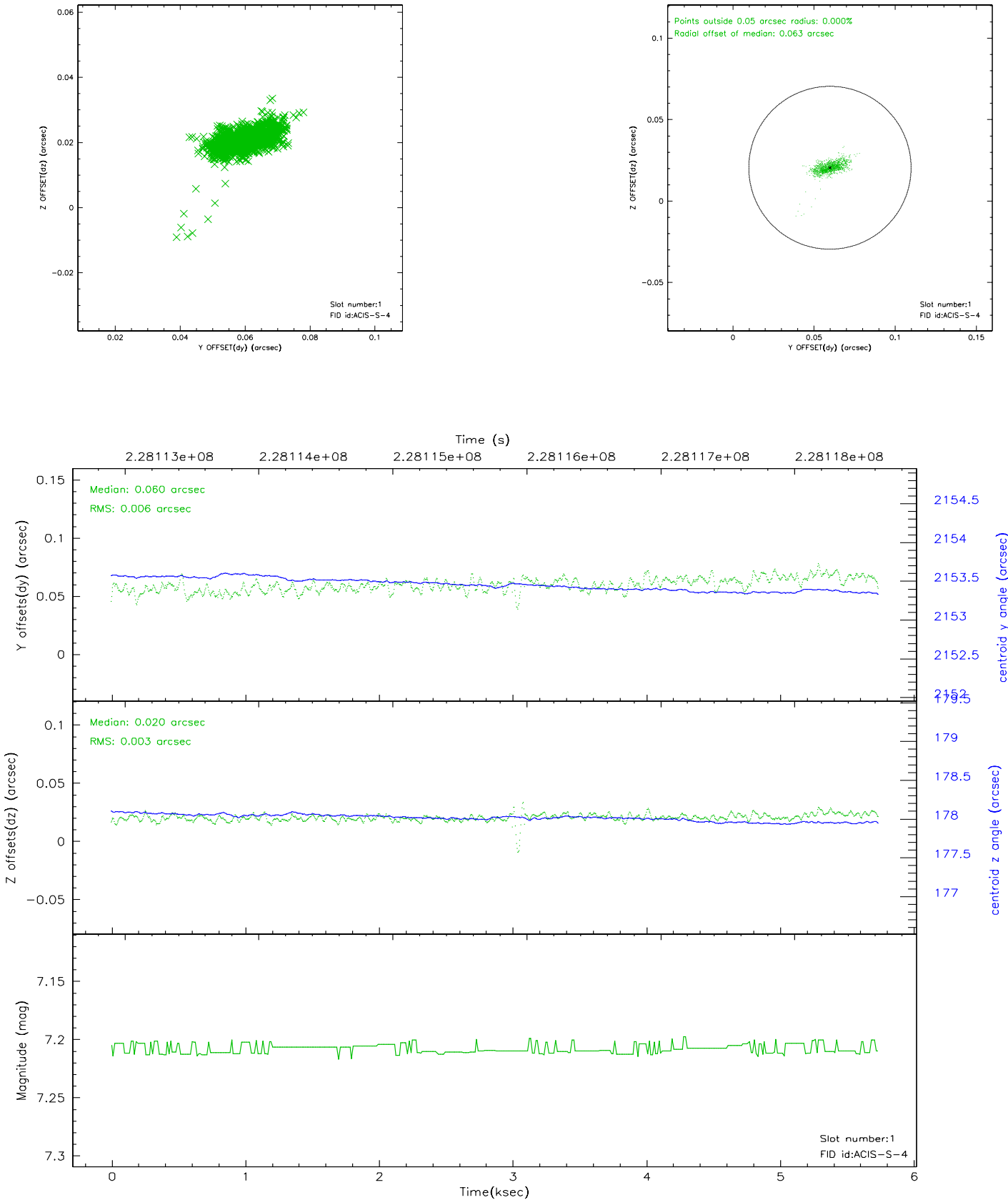


2.5 FID Slots

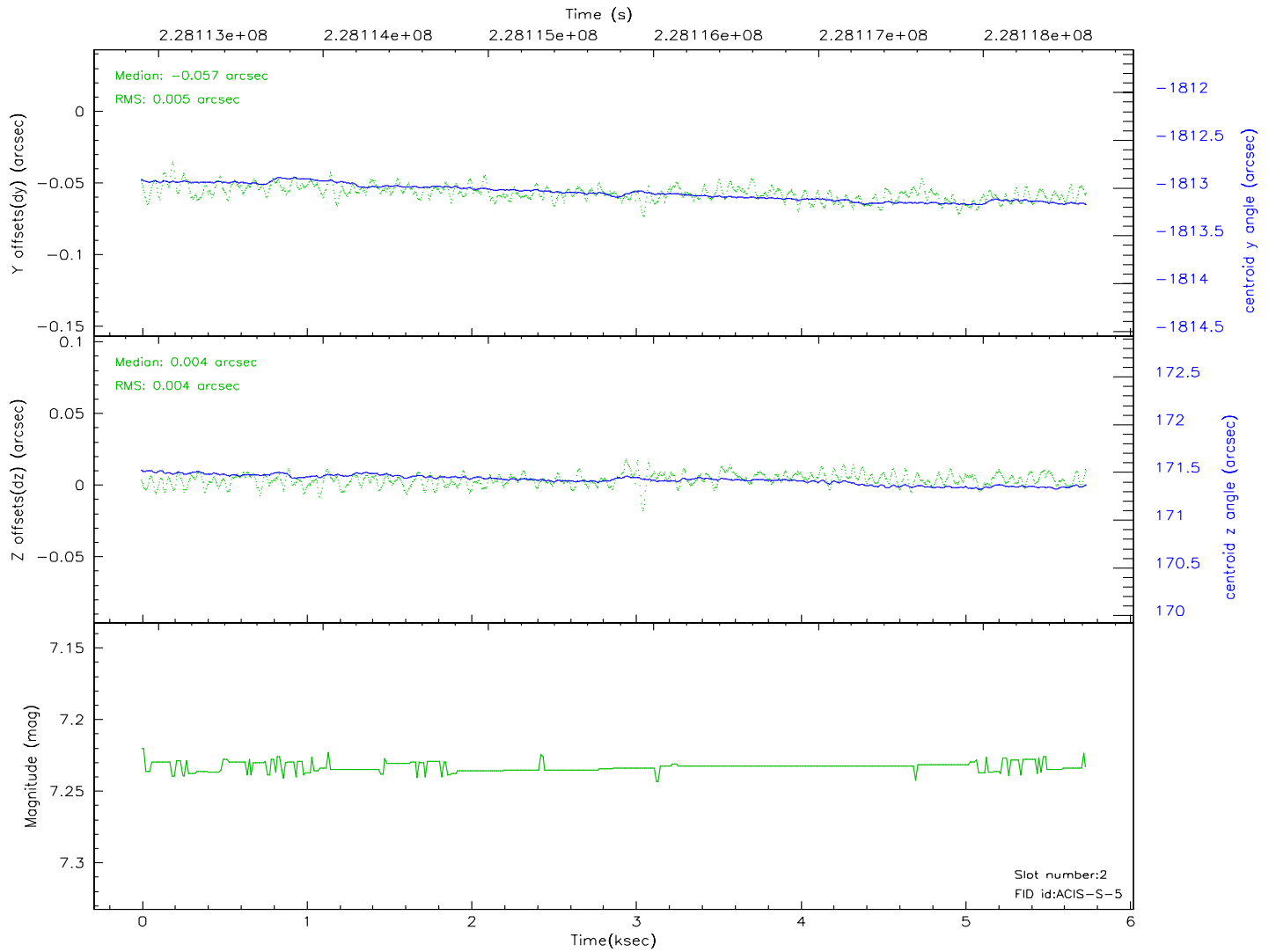
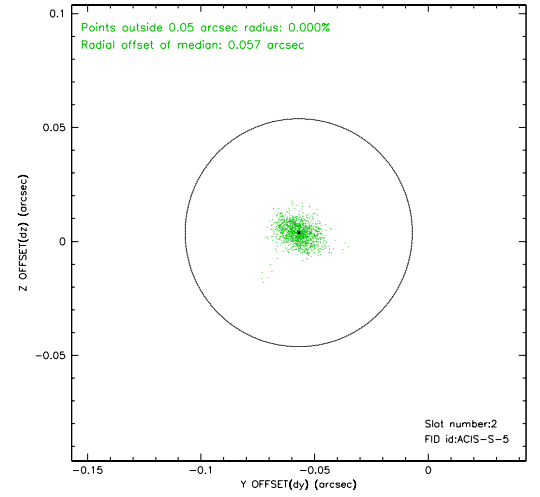
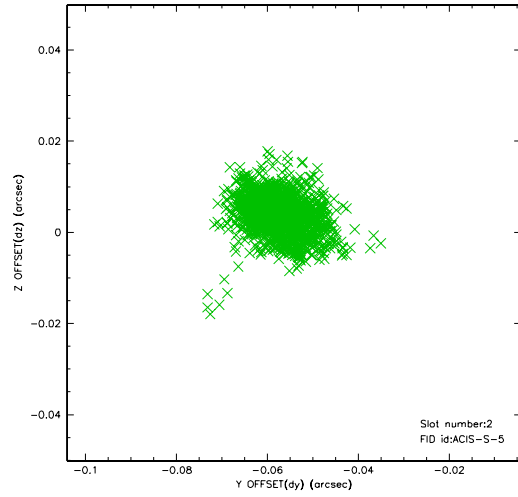
2.5.1 Slot 0



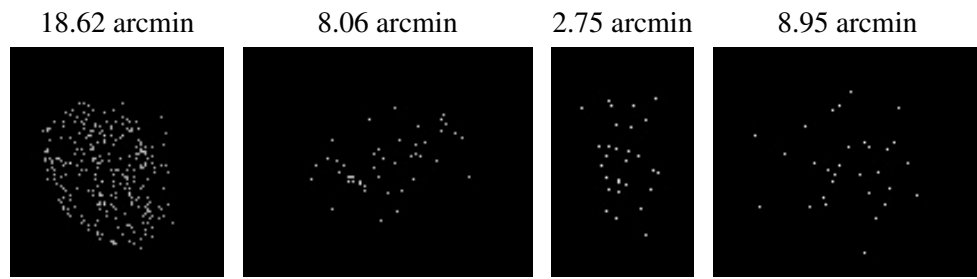
2.5.2 Slot 1



2.5.3 Slot 2



3 Point Sources



A Summary

A.1 Status

V&V Scientist	Jen Lauer
V&V Date (YYYY-MM-DD)	2006.03.17
V&V Edition	1
V&V Disposition and Status	OK
V&V Charge Time	4.956799

A.2 Comments