

V&V Reference Report

L2 ASCDS Version : 7.6.7

Observation 5710 - L2 Version 002
Chandra X-Ray Center

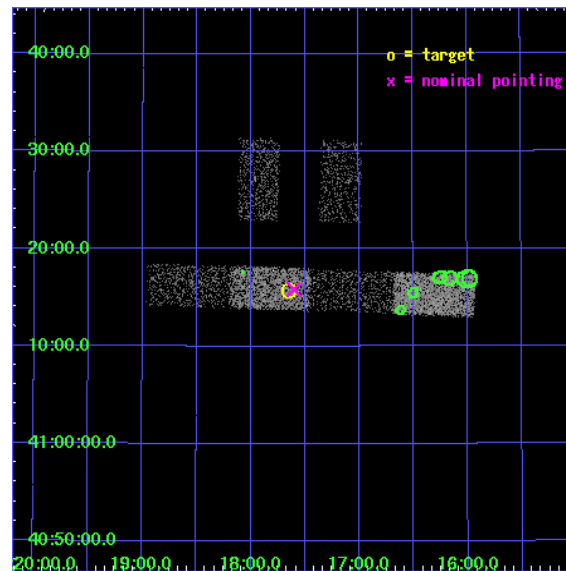
L2 Processing Date: Feb 28 2006

Contents

1	Front	2
2	OBI	3
2.1	OBI	3
2.1.1	Images	3
2.1.2	Bias	3
2.1.3	Parameters	4
2.1.4	Events	4
2.2	Compared Parameters	5
2.3	Aspect	6
2.4	Star Slots	9
2.4.1	Slot 3	9
2.4.2	Slot 4	10
2.4.3	Slot 5	11
2.4.4	Slot 6	12
2.4.5	Slot 7	13
2.5	FID Slots	14
2.5.1	Slot 0	14
2.5.2	Slot 1	15
2.5.3	Slot 2	16
3	Point Sources	17
A	Summary	18
A.1	Status	18
A.2	Comments	18

1 Front

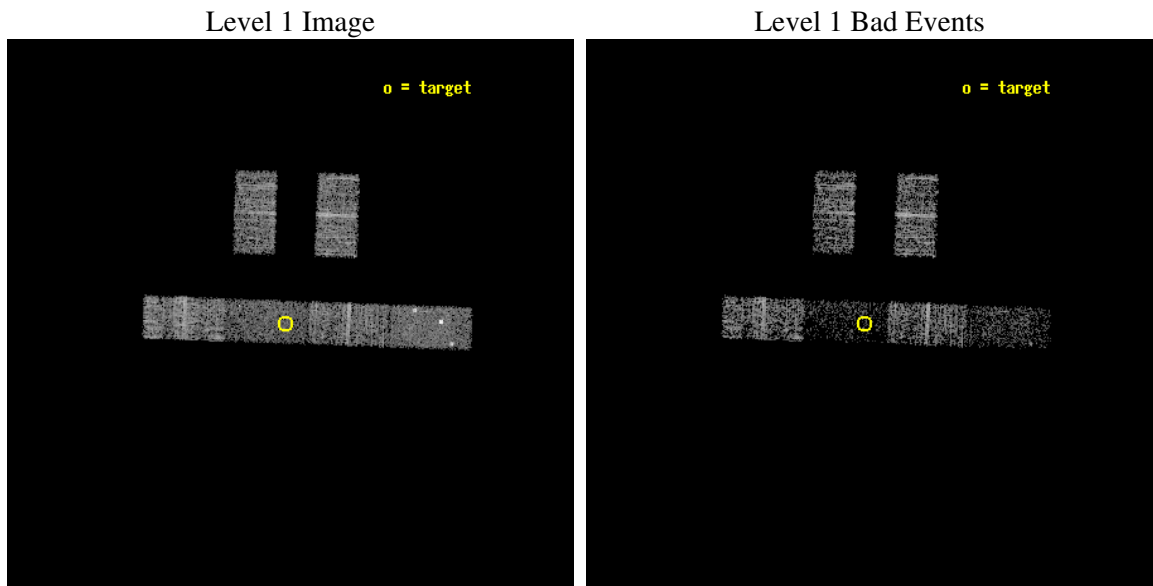
seq_num	701132
obs_id	5710
title	What kind of Jets does Nature make? X-ray characterization of the FIRST Flat Spectrum Sample
observer	Dr. Giovanni Fossati
object	FIRST J131739.2+411545
dtcycle	0
cycle	P
ra_targ	199.413333
dec_targ	41.262778
ra_nom	199.40049246355
dec_nom	41.264062904408
roll_nom	182.04731336132
revision	2
ontime	3180.6000210643
livetime	3109.6988864532
ontime2	3180.6000210643
ontime3	3180.6000210643
ontime5	3180.6000210643
ontime6	3180.6000210643
ontime7	3180.6000210643
ontime8	3180.6000210643
l2events	9929



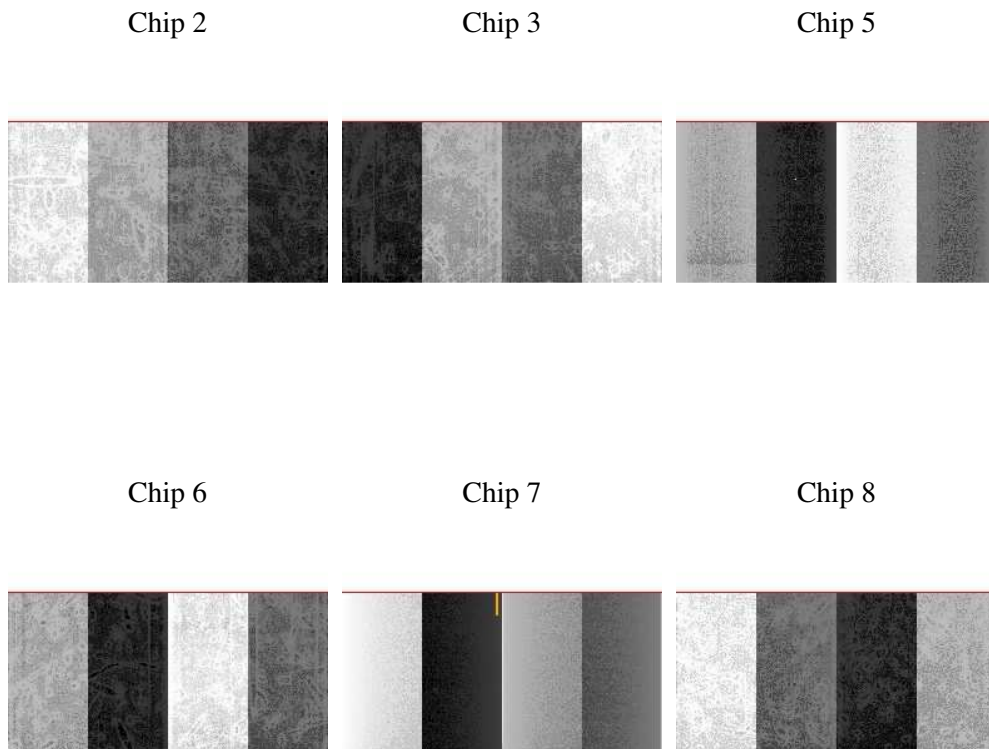
2 OBI

2.1 OBI

2.1.1 Images



2.1.2 Bias



2.1.3 Parameters

obi_num	0
ascdsver	7.6.7
caldsver	3.2.1
date	2006-02-28T21:10:03
revision	2

sched_exp_time	3000.000000
ontime	3682.0356173813
ontime2	3682.0356173813
ontime3	3682.0355974436
ontime5	3682.0356173813
ontime6	3682.0355974436
ontime7	3682.0356173813
ontime8	3682.0355974436
l1events	63925

2.1.4 Events

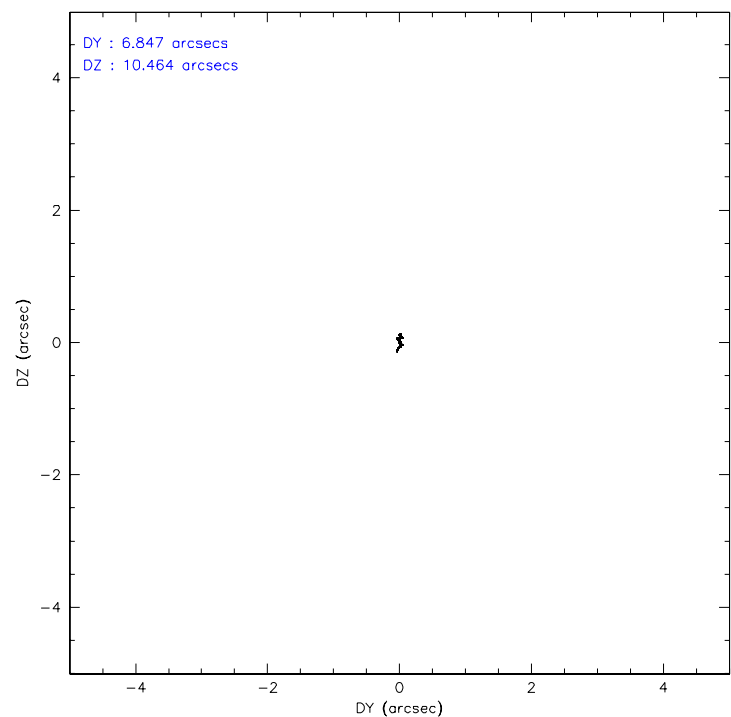
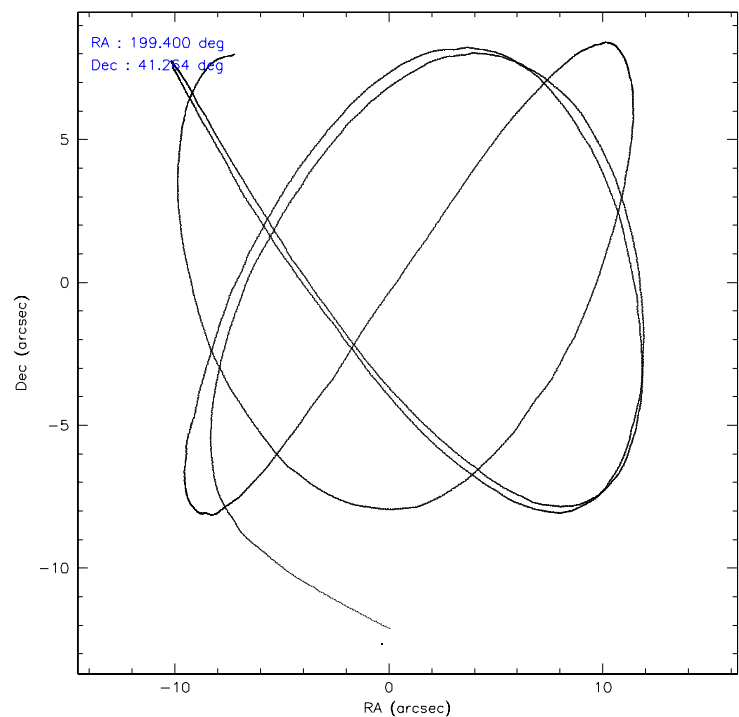
	ccd 2	ccd 3	ccd 5	ccd 6	ccd 7	ccd 8
level 1 events	12174	10454	11107	10277	6342	13571
rejected events	11375	9629	4875	9435	3139	10730
rejected %	93%	92%	43%	91%	49%	79%

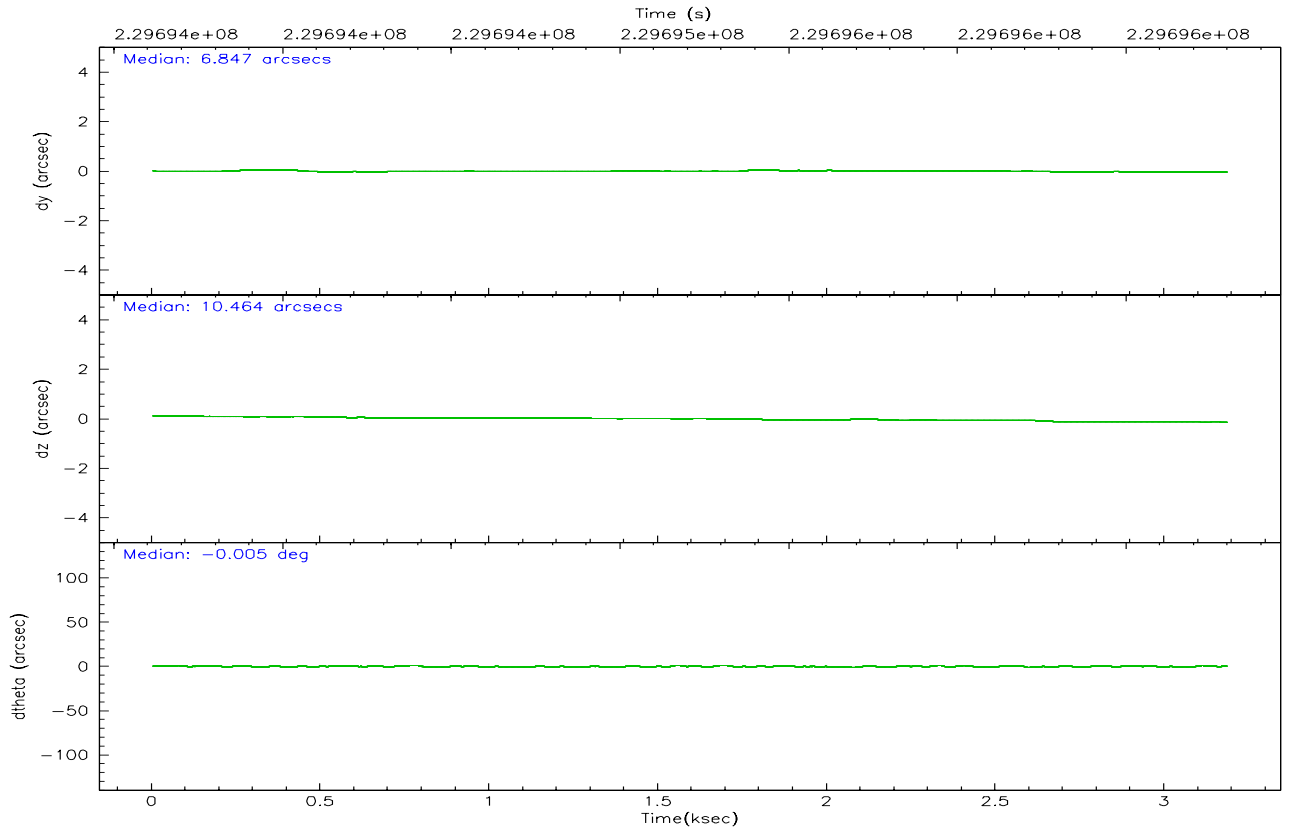
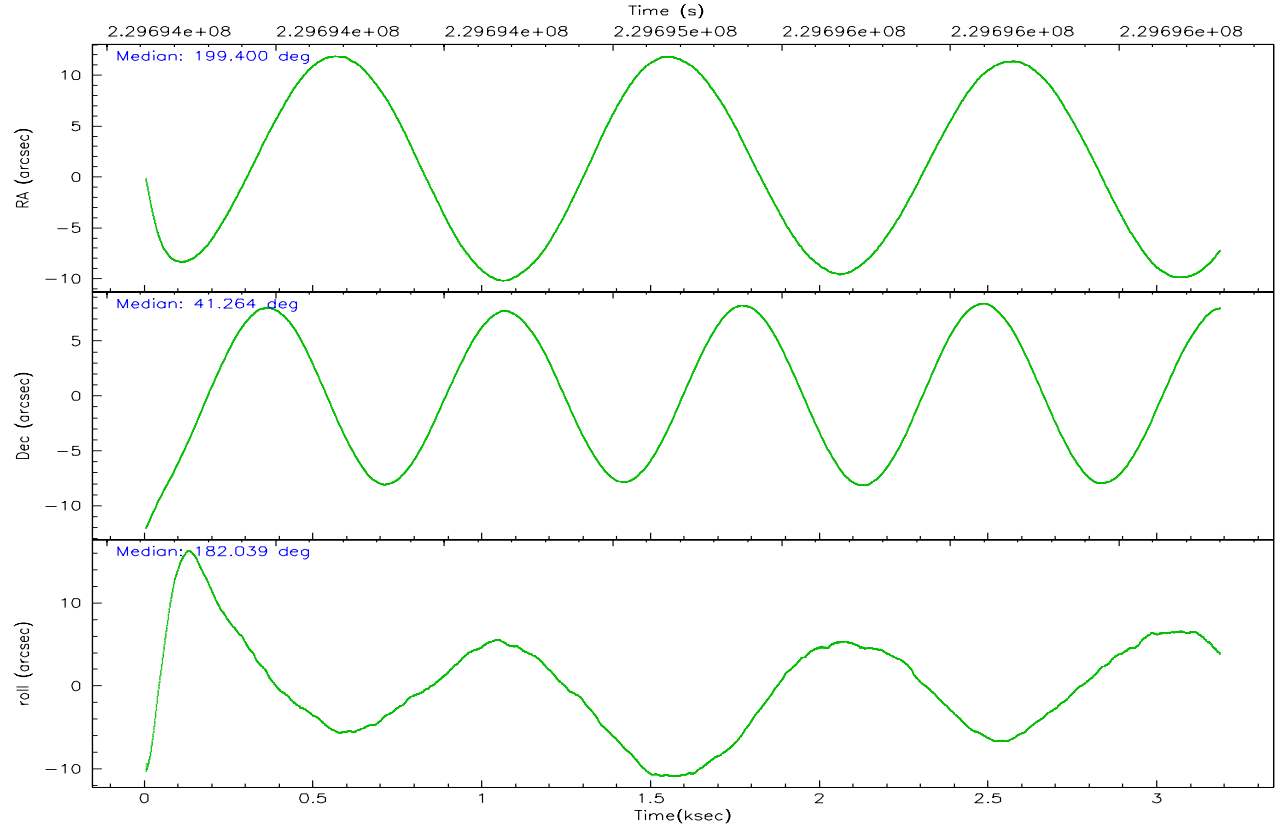
	ccd 2	ccd 3	ccd 5	ccd 6	ccd 7	ccd 8
grade 0 events	321	354	2284	368	412	859
	2%	3%	20%	3%	6%	6%
grade 1 events	1	6	0	1	3	9
	0%	0%	0%	0%	0%	0%
grade 2 events	195	187	1982	192	988	736
	1%	1%	17%	1%	15%	5%
grade 3 events	116	131	227	133	331	440
	0%	1%	2%	1%	5%	3%
grade 4 events	138	146	192	169	319	369
	1%	1%	1%	1%	5%	2%
grade 5 events	160	202	564	204	536	349
	1%	1%	5%	1%	8%	2%
grade 6 events	162	126	2527	132	1639	809
	1%	1%	22%	1%	25%	5%
grade 7 events	11081	9302	3331	9078	2114	10000
	91%	88%	29%	88%	33%	73%

2.2 Compared Parameters

Parameter	Planned	Actual	Parameter	Planned	Actual
Instrument	ACIS	ACIS	Obspar format version number	6	6
Detector	ACIS-235678	ACIS-235678	Obspar file type	PREDICTED	ACTUAL
Grating	NONE	NONE	Obspar update status	NONE	UPDATED
Data mode	FAINT	FAINT	On-chip summing requested	N	N
Observation mode	POINTING	POINTING	Subarray requested	1/2	1/2
Pointing RA	199.431043	199.4004924635467	Subarray start row	0	257
Pointing Dec	41.278887	41.26406290440765	Subarray row count	1024	512
Pointing Roll	181.870598	182.047313361321	Alternating exposures requested	N	N
SIM focus pos (mm)	-0.684267	-0.6828225247311905	Primary exposure time	0.000000	1.8
SIM defocus (mm)	0	0.001444936568705701			
SIM translation stage pos (mm)	-190.132523	-190.1400660498719			
SIM translation stage offset (mm)	0	0.00754346686406393			
Observation start time	229693804.184000	229692703.79634			
Observation start date	2005-04-12T11:49:00	2005-04-12T11:31:43			
Observation end time	229696804.184000	229697698.62157			
Observation end date	2005-04-12T12:39:00	2005-04-12T12:54:58			
Read mode	TIMED	TIMED			

2.3 Aspect



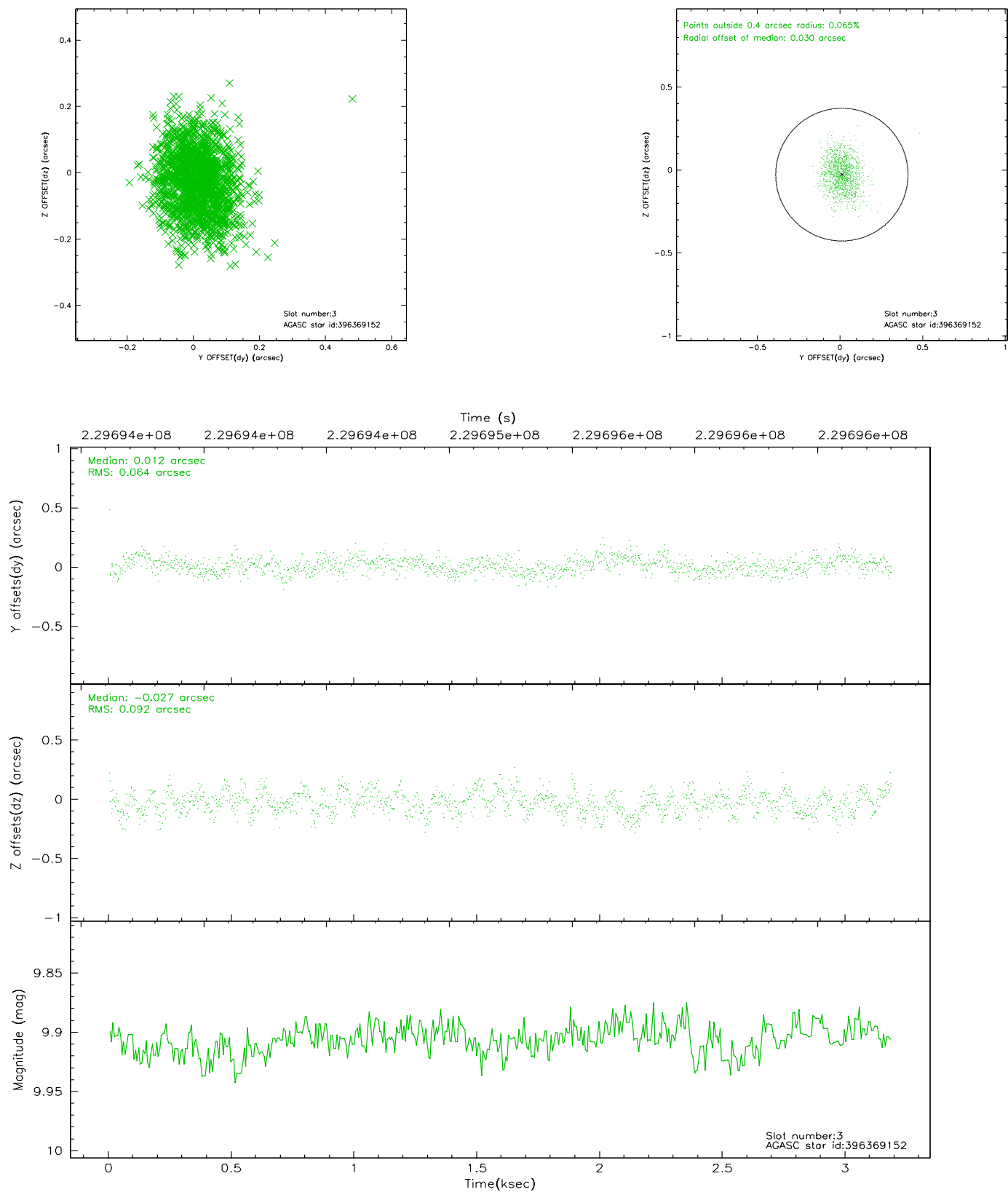


Slot Statistics

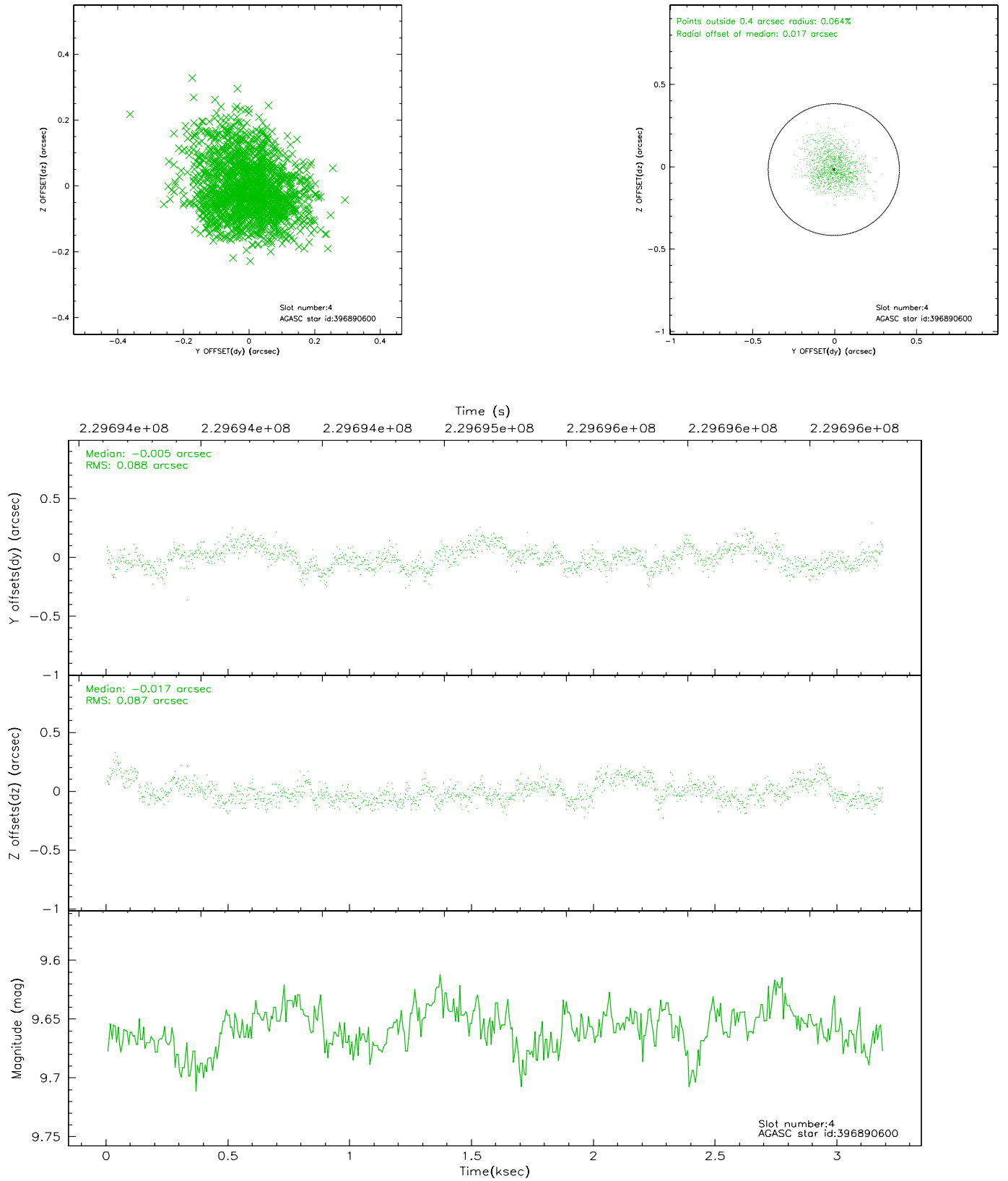
slot	status	id	mag	n_pts	med_dy	med_dz	dr1	dr2	ra	dec	mean_y	mean_z
0	FID	ACIS-S-2	7.09	777	-0.034	-0.013	0.004	0.009	0.000000	0.000000	-759.61	-1731.74
1	FID	ACIS-S-4	7.20	777	0.028	0.018	0.006	0.009	0.000000	0.000000	2152.80	174.74
2	FID	ACIS-S-6	7.35	777	-0.022	0.002	0.007	0.010	0.000000	0.000000	404.93	814.38
3	GUIDE	396369152	9.91	1550	0.012	-0.027	0.120	0.191	199.790482	41.802601	-1025.48	-1854.79
4	GUIDE	396890600	9.66	1551	-0.005	-0.017	0.131	0.213	200.243162	40.905071	-2165.81	1405.90
5	GUIDE	396892328	8.91	1554	-0.078	0.070	0.085	0.134	200.225719	41.751860	-2190.40	-1641.05
6	GUIDE	396892648	8.67	1553	-0.079	-0.008	0.090	0.141	200.297584	41.656880	-2375.78	-1296.67
7	GUIDE	396372232	9.92	1551	0.146	-0.024	0.174	0.272	198.497284	41.878058	2429.59	-2251.36

2.4 Star Slots

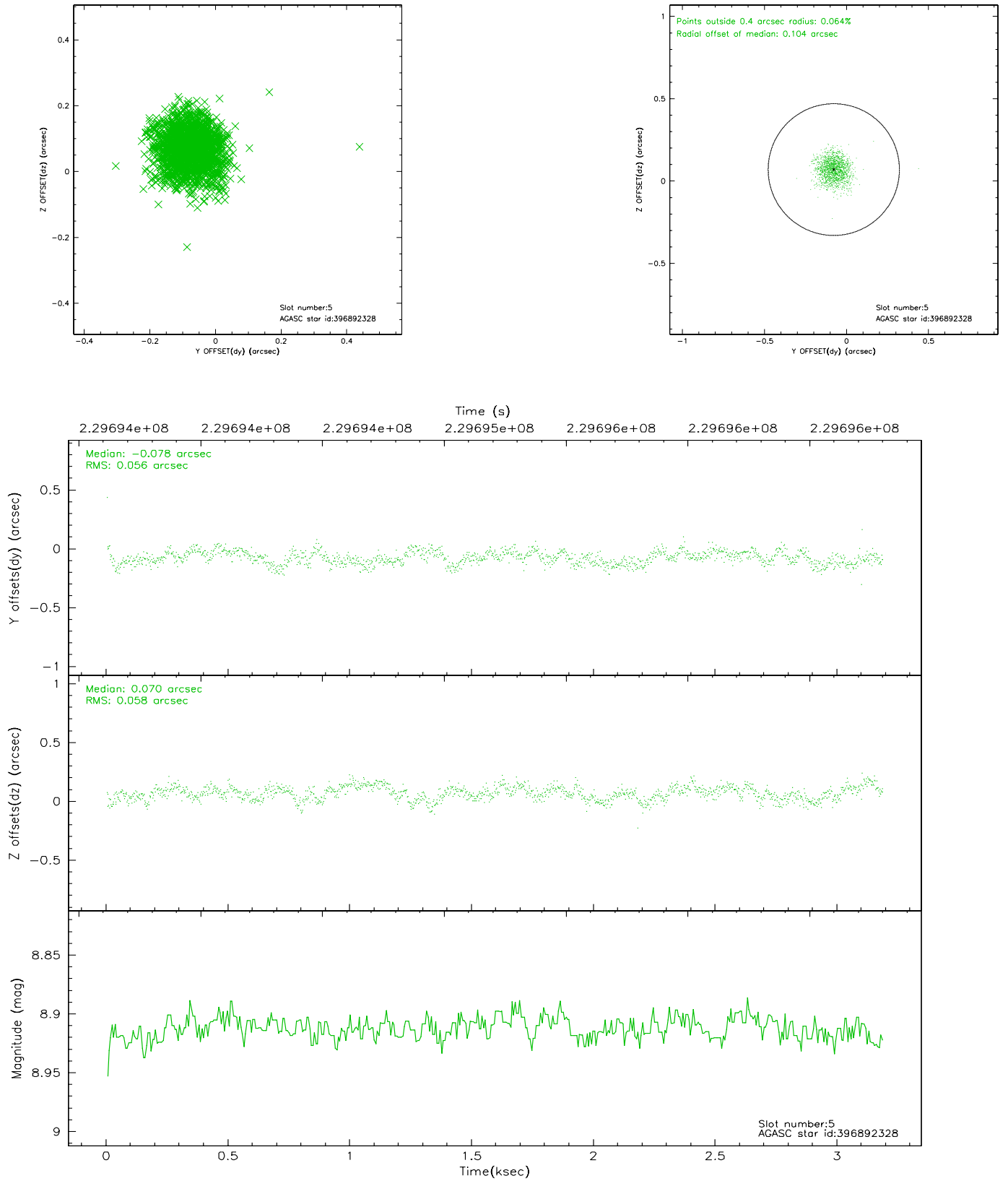
2.4.1 Slot 3



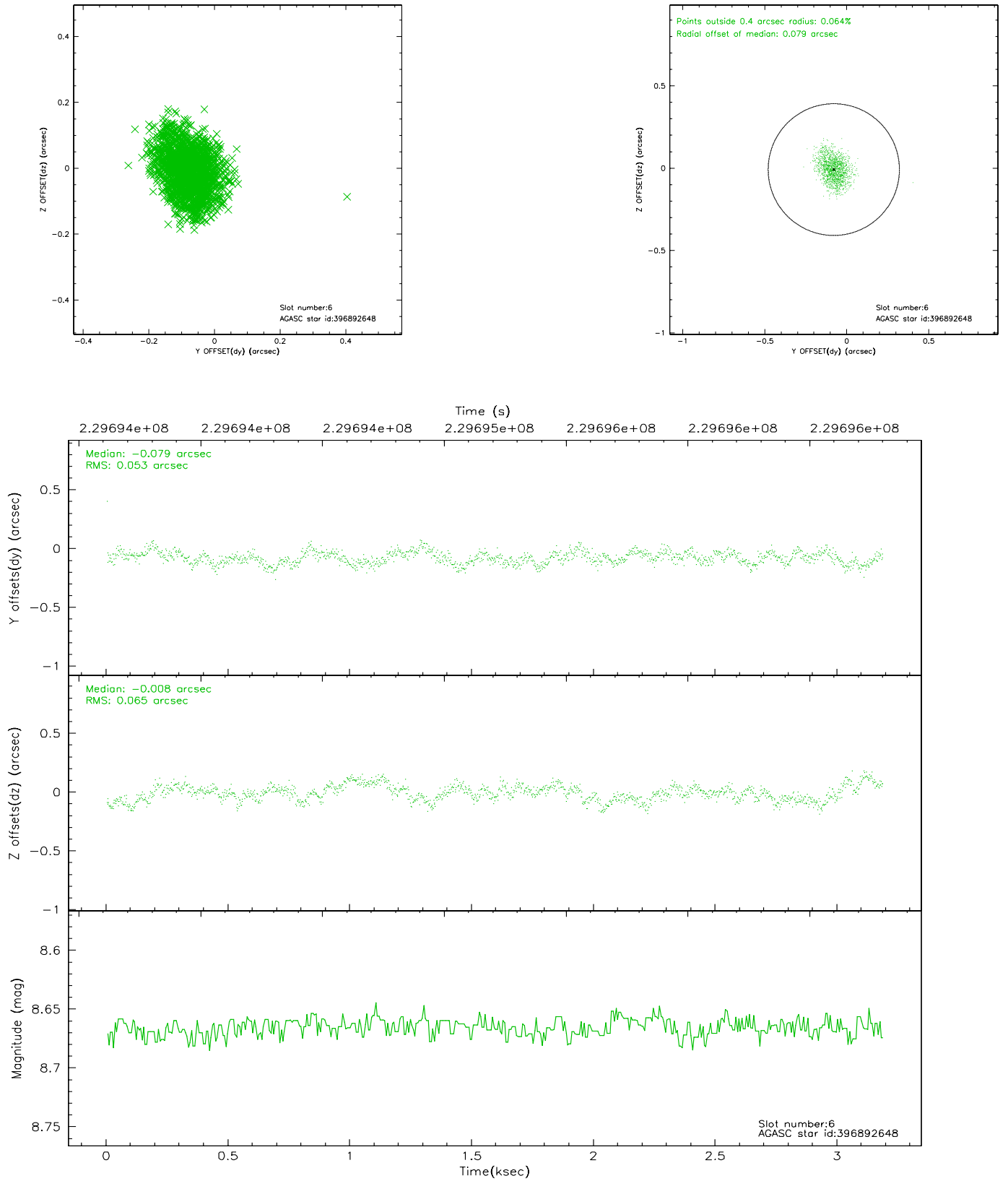
2.4.2 Slot 4



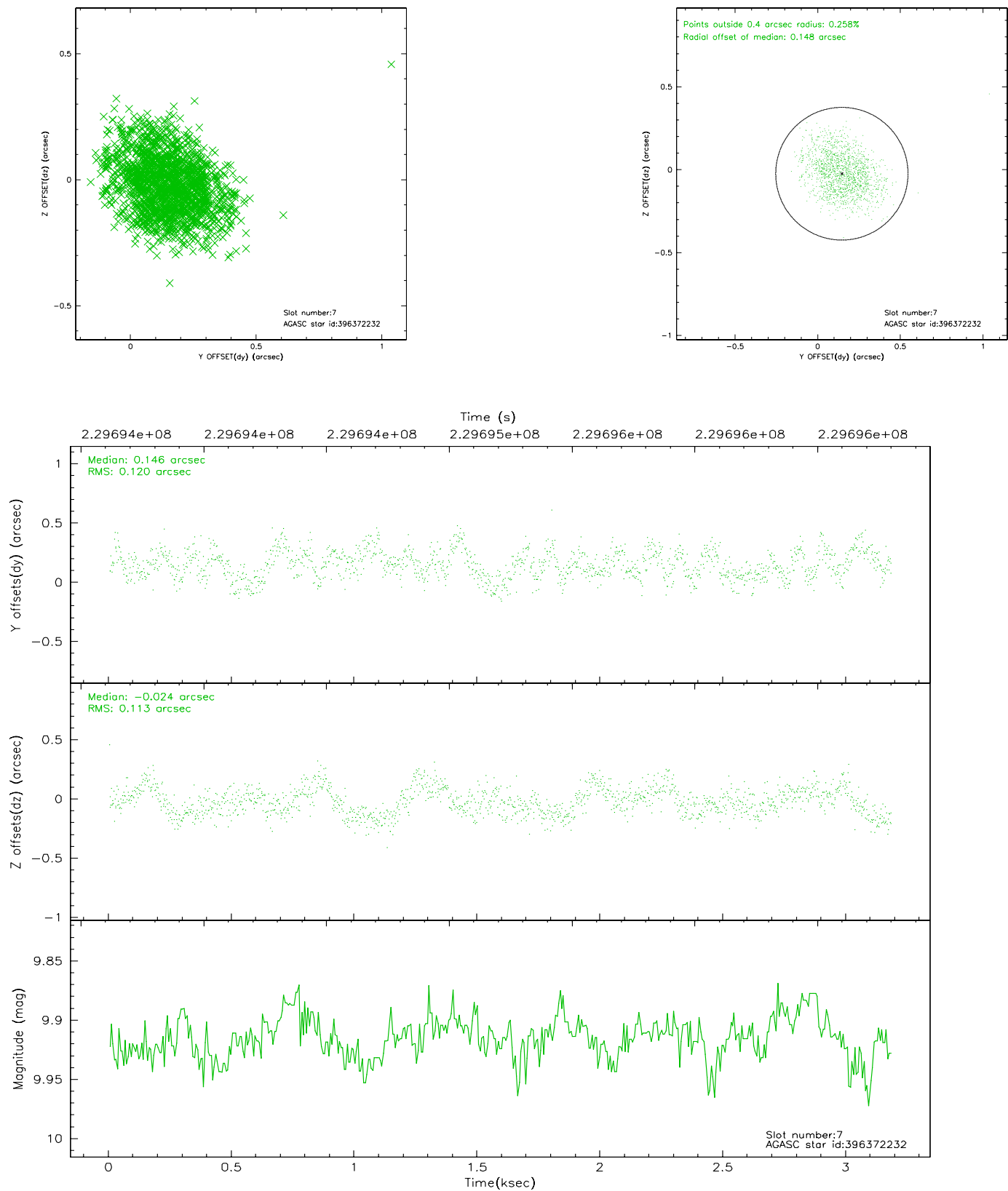
2.4.3 Slot 5



2.4.4 Slot 6

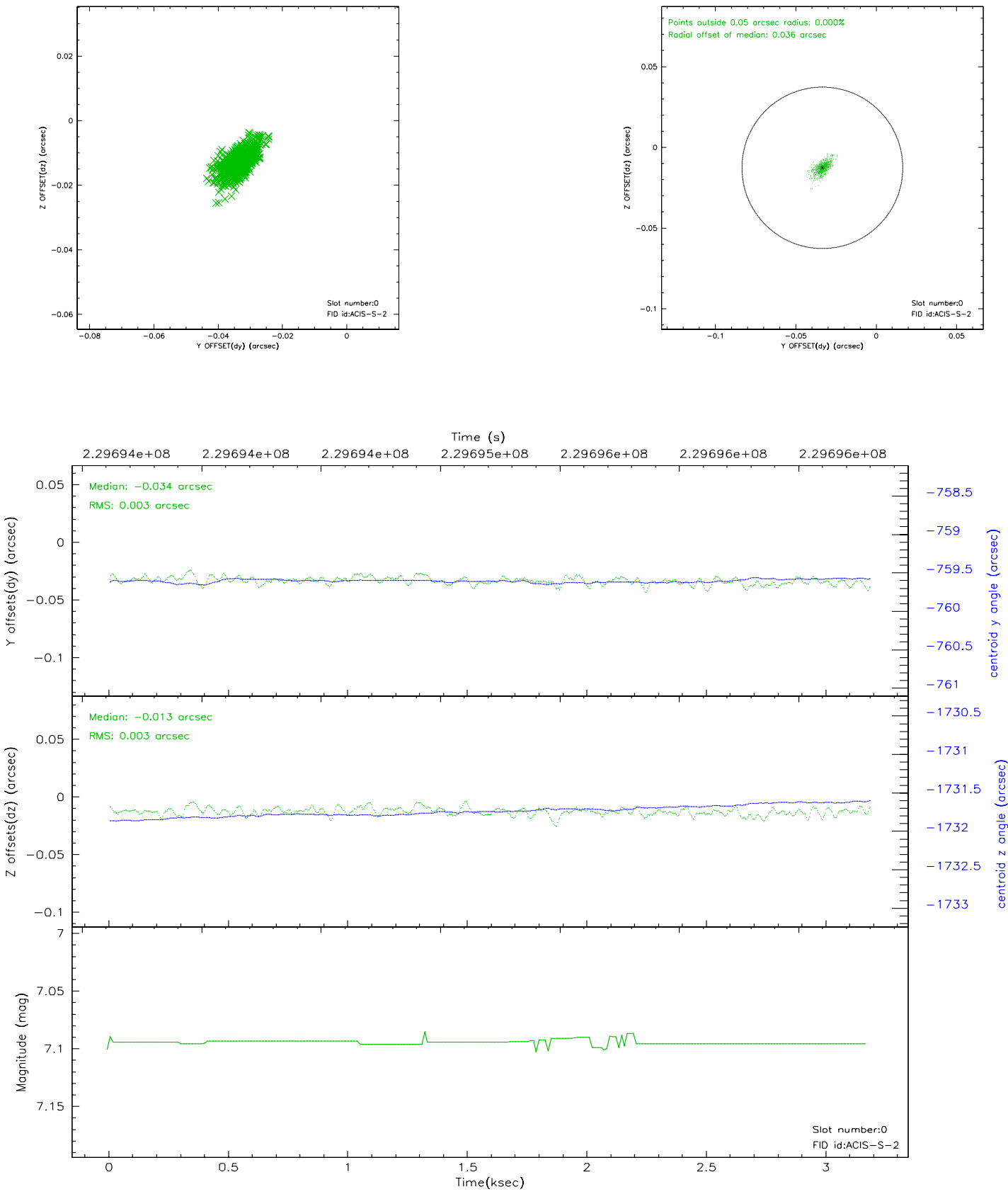


2.4.5 Slot 7

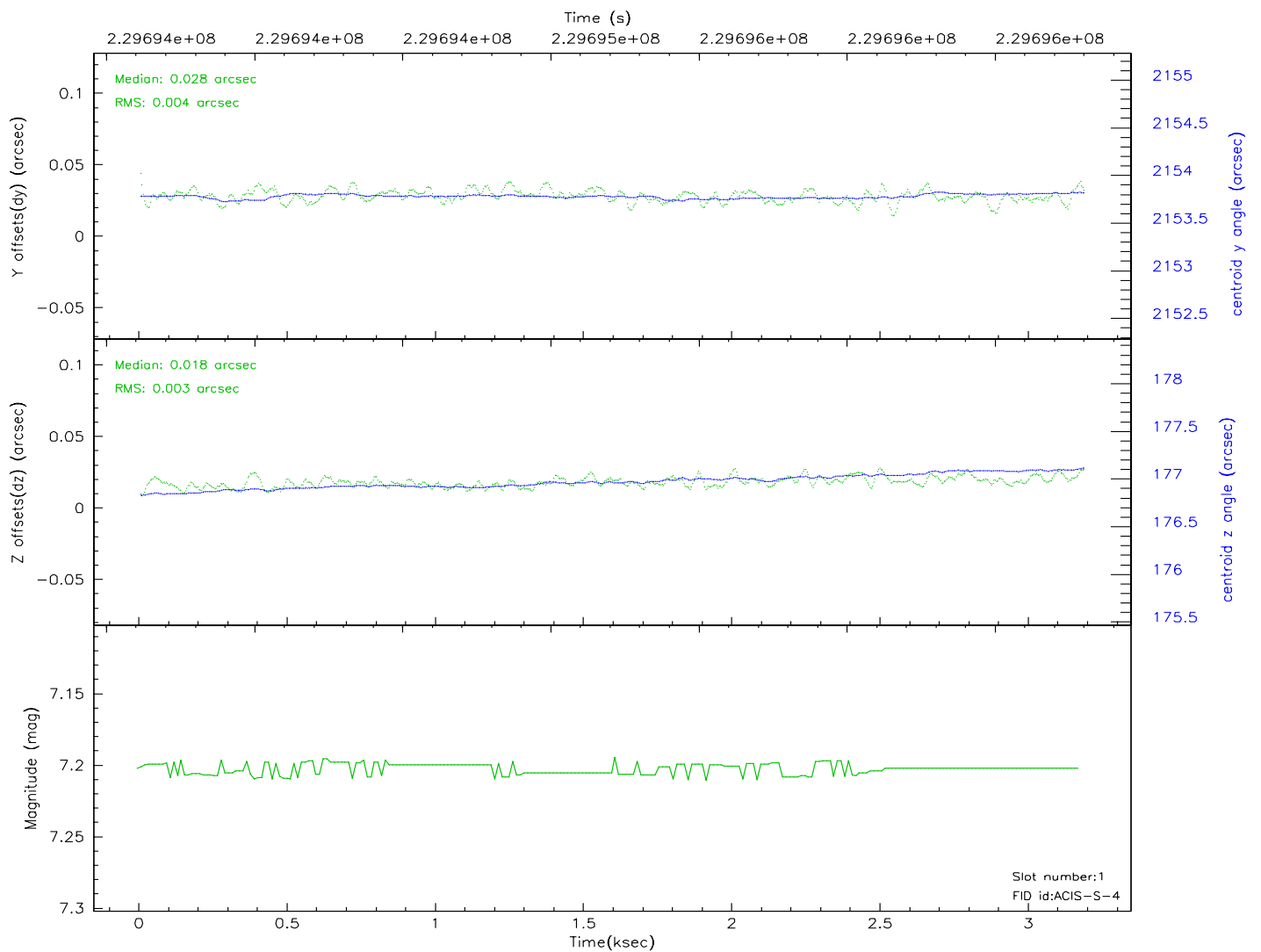
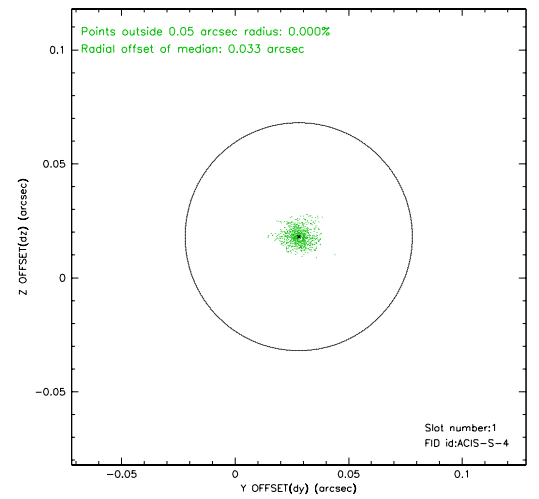
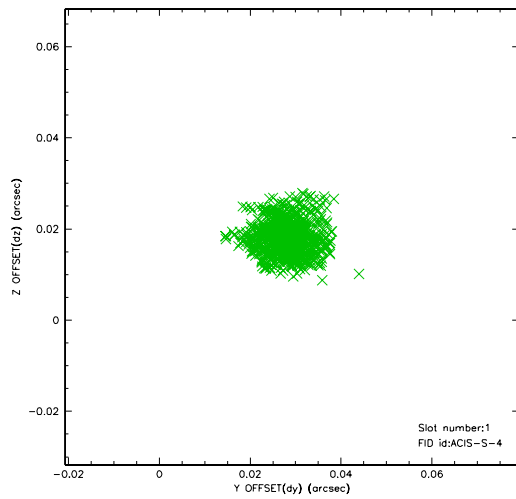


2.5 FID Slots

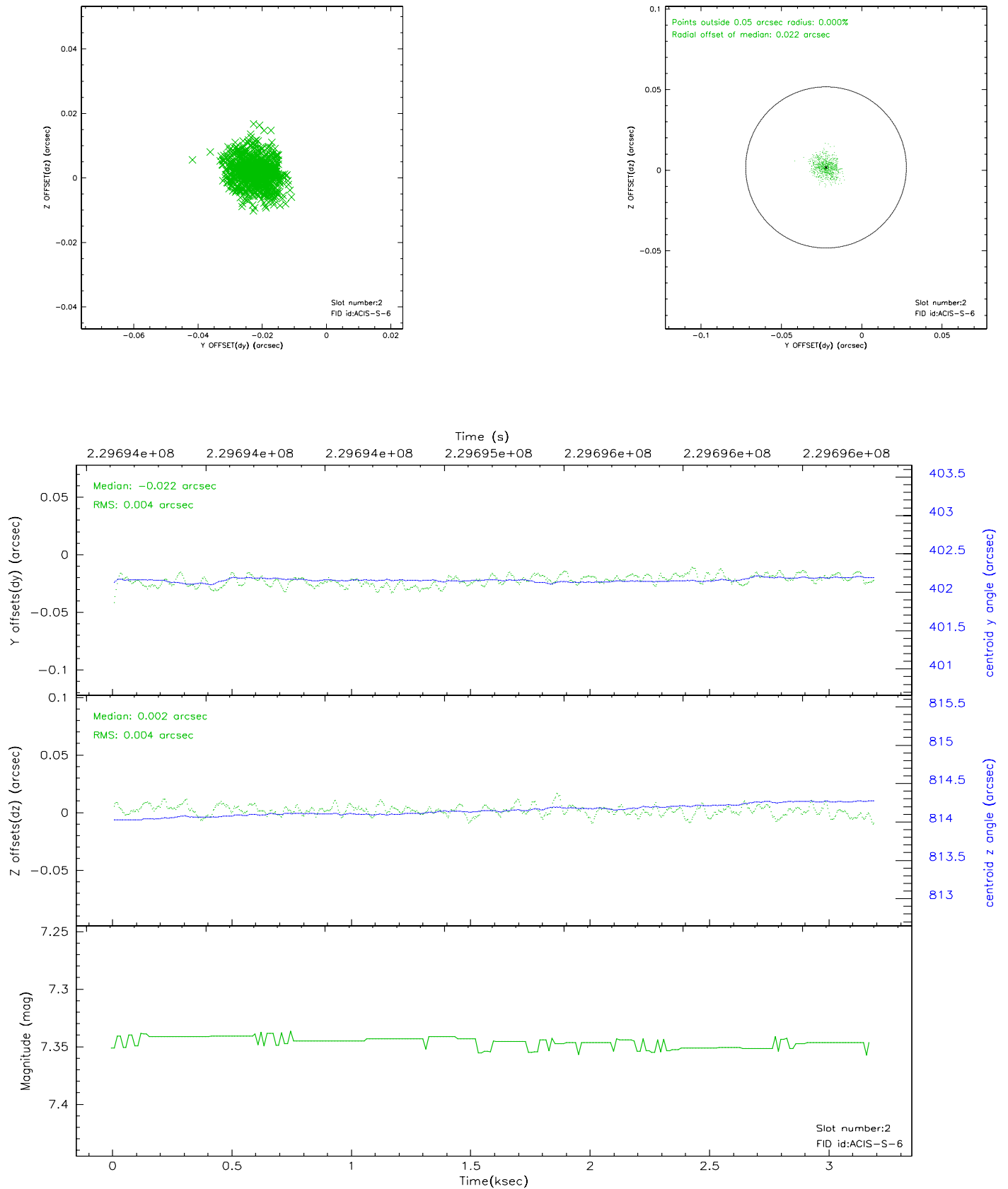
2.5.1 Slot 0



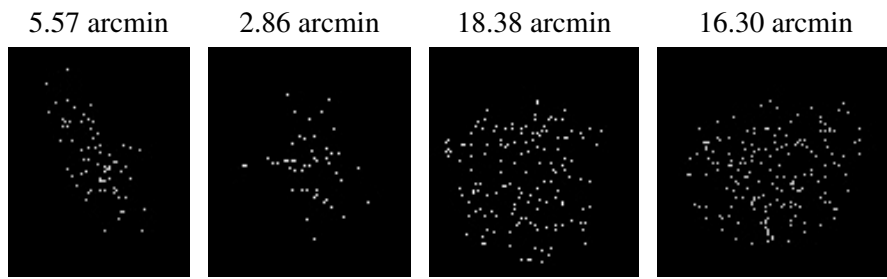
2.5.2 Slot 1



2.5.3 Slot 2



3 Point Sources



A Summary

A.1 Status

V&V Scientist	Beth Sundheim
V&V Date (YYYY-MM-DD)	2006.03.01
V&V Edition	1
V&V Disposition and Status	OK
V&V Charge Time	3.1806

A.2 Comments