

V&V Reference Report

L2 ASCDS Version : 8.5.1

Observation 5630 - L2 Version 3
Chandra X-Ray Center

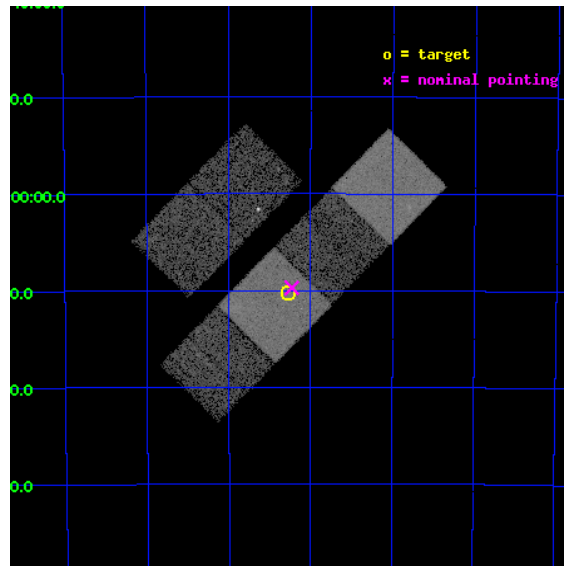
L2 Processing Date : Dec 17 2012

Contents

1	Front	2
2	OBI	3
2.1	OBI	3
2.1.1	Images	3
2.1.2	Bias	3
2.1.3	Parameters	4
2.1.4	Events	4
2.2	Compared Parameters	5
2.3	Aspect	6
2.4	Star Slots	9
2.4.1	Slot 3	9
2.4.2	Slot 4	10
2.4.3	Slot 5	11
2.4.4	Slot 6	12
2.4.5	Slot 7	13
2.5	FID Slots	14
2.5.1	Slot 0	14
2.5.2	Slot 1	15
2.5.3	Slot 2	16
A	Summary	17
A.1	Status	17
A.2	Comments	17

1 Front

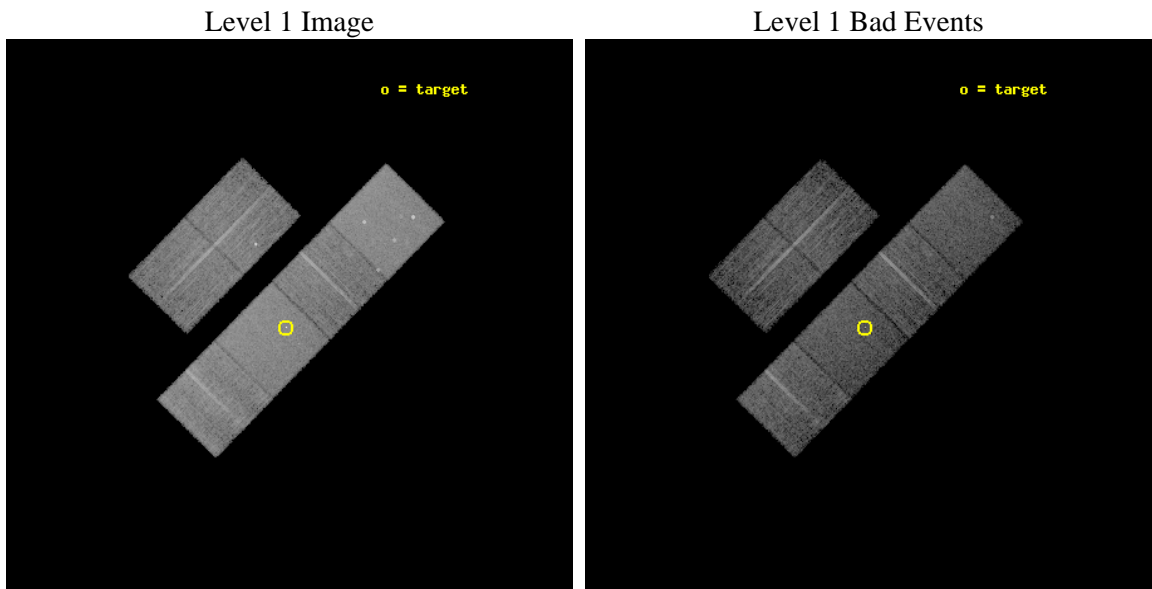
seq_num	701053	Sequence number
obs_id	5630	Observation id
title	THE X-RAY PROPERTIES OF HIGHER REDSHIFT RED AGN	Proposal title
observer	Dr. Belinda Wilkes	Principal investigator
object	2MASS 194915-551012	Source name
dtcycle	0	
cycle	P	events from which exps? Prim/Second/Both
ra_targ	297.316667	Observer's specified target RA [deg]
dec_targ	-55.170167	Observer's specified target Dec [deg]
ra_nom	297.30710377463	Nominal RA [deg]
dec_nom	-55.162134959554	Nominal Dec [deg]
roll_nom	134.39100321145	Nominal Roll [deg]
revision	3	Processing version of data
ontime	8958.5536945462	Sum of GTIs [s]
livetime	8845.1150934725	Livetime [s]
ontime2	8958.5947345495	Sum of GTIs [s]
ontime3	8958.4305745363	Sum of GTIs [s]
ontime5	8958.5126545429	Sum of GTIs [s]
ontime6	8958.4716145396	Sum of GTIs [s]
ontime7	8958.5536945462	Sum of GTIs [s]
ontime8	8958.3895345628	Sum of GTIs [s]
l2events	111252	Number of level 2 events



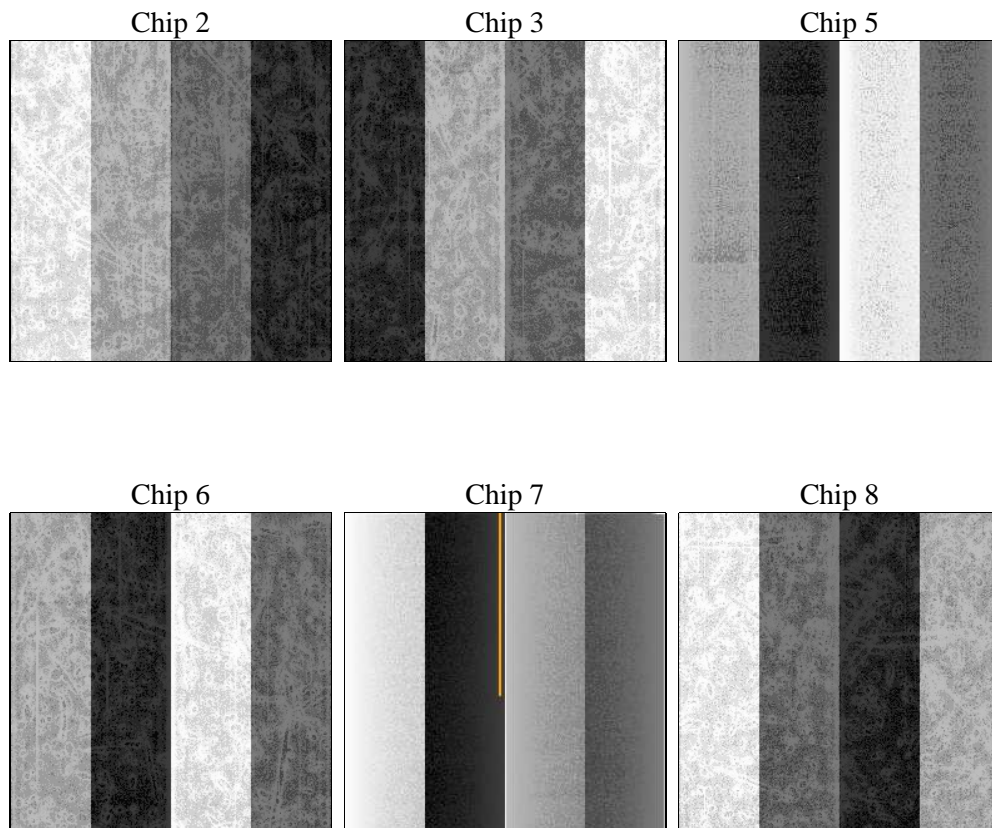
2 OBI

2.1 OBI

2.1.1 Images



2.1.2 Bias



2.1.3 Parameters

obi_num	0	Obi number	sched_exp_time	9000.000000	[s] Scheduled observation exposure time
ascdsver	8.5.1	Processing system revision	ontime	8958.5536945462	Sum of GTIs [s]
caldsver	4.5.5	 	ontime2	8958.5947345495	Sum of GTIs [s]
date	2012-12-17T16:43:03	Date and time of file creation	ontime3	8958.4305745363	Sum of GTIs [s]
revision	3	Processing version of data	ontime5	8958.5126545429	Sum of GTIs [s]
			ontime6	8958.4716145396	Sum of GTIs [s]
			ontime7	8958.5536945462	Sum of GTIs [s]
			ontime8	8958.3895345628	Sum of GTIs [s]
			l1events	468173	Number of level 1 events

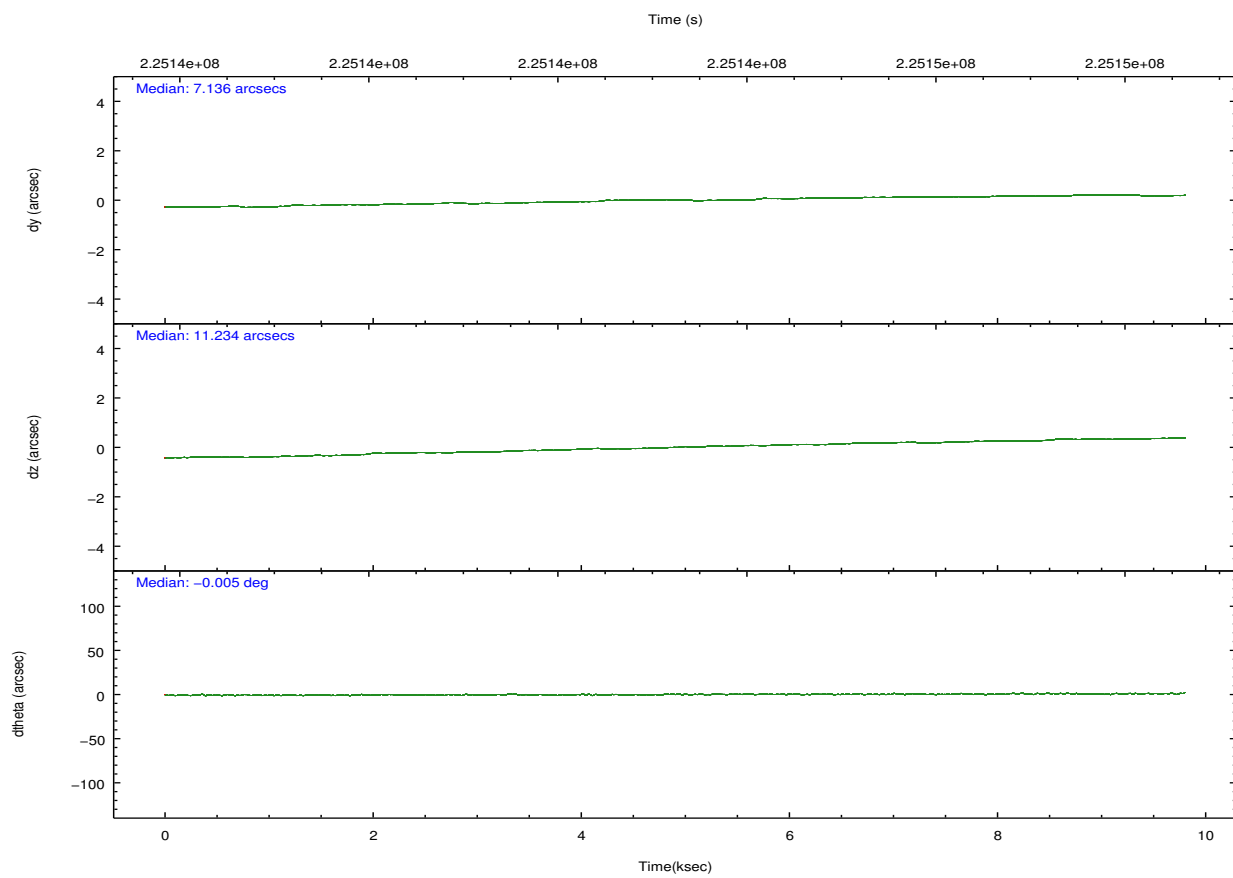
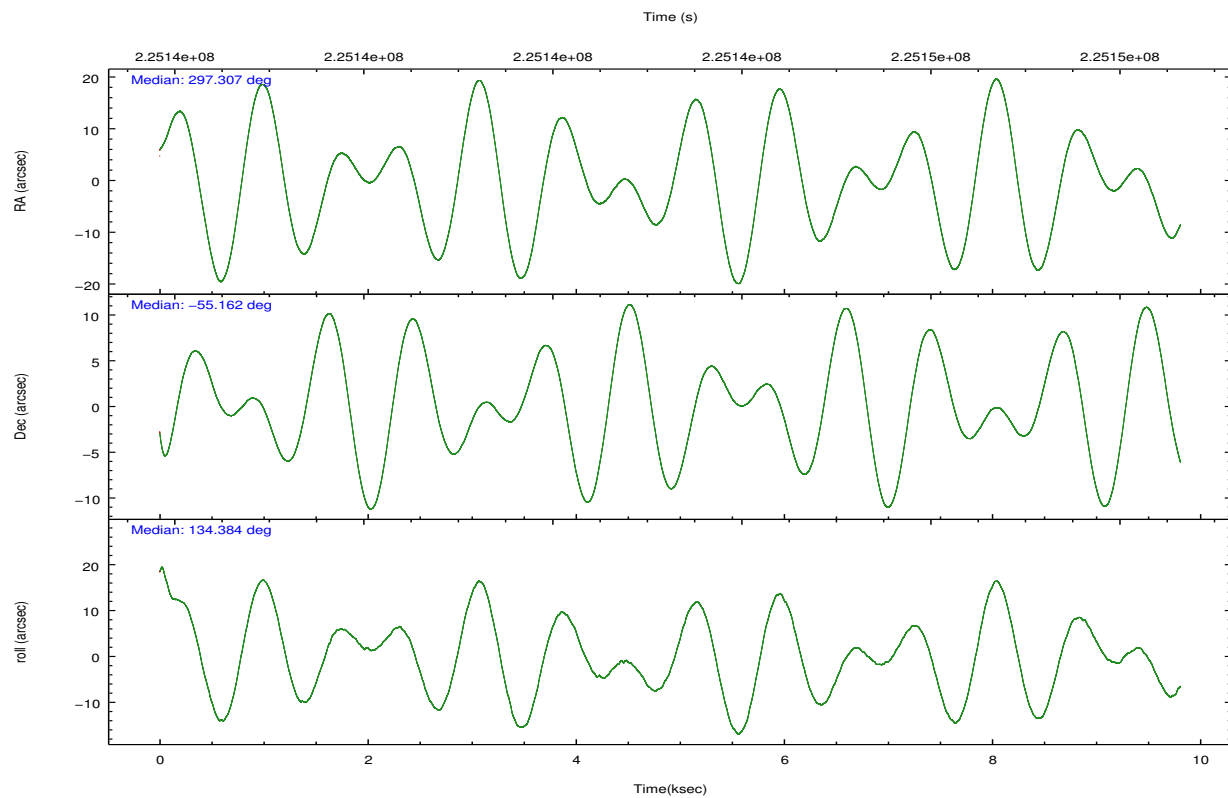
2.1.4 Events

	ccd 2	ccd 3	ccd 5	ccd 6	ccd 7	ccd 8		ccd 2	ccd 3	ccd 5	ccd 6	ccd 7	ccd 8
level 1 events	65916	61707	97906	66492	89747	86405	grade 0 events	4679	3836	5344	3633	4045	7060
rejected events	56514	53274	52547	57824	50749	64995		7%	6%	5%	5%	4%	8%
rejected %	85%	86%	53%	86%	56%	75%	grade 1 events	48	39	186	26	91	77
								0%	0%	0%	0%	0%	0%
							grade 2 events	1861	1716	13492	1863	7811	4352
								2%	2%	13%	2%	8%	5%
							grade 3 events	748	715	1738	760	3551	2510
								1%	1%	1%	1%	3%	2%
							grade 4 events	709	747	1728	704	3542	2383
								1%	1%	1%	1%	3%	2%
							grade 5 events	2494	2866	7076	2918	8156	3859
								3%	4%	7%	4%	9%	4%
							grade 6 events	1409	1424	23094	1721	20083	5115
								2%	2%	23%	2%	22%	5%
							grade 7 events	53968	50364	45248	54867	42468	61049
								81%	81%	46%	82%	47%	70%

2.2 Compared Parameters

Parameter	Planned	Actual	Parameter	Planned	Actual
Instrument	ACIS	ACIS	Obspar format version number	7	7
Detector	ACIS-235678	ACIS-235678	Obspar file type	PREDICTED	ACTUAL
Grating	NONE	NONE	Obspar update status	NONE	UPDATED
Data mode	FAINT	FAINT	Number of optional ACIS chips dropped	0	0
Observation mode	POINTING	POINTING	On-chip summing requested	N	N
[deg] Pointing RA	297.353214	297.3071037746265	Subarray requested	NONE	NONE
[deg] Pointing Dec	-55.169129	-55.16213495955429	Alternating exposures requested	N	N
[deg] Pointing Roll	134.272223	134.3910032114519	[s] Primary exposure time	0.000000	3.2
[mm] SIM focus pos	-0.684267	-0.6828225247311905			
[mm] SIM defocus	0	0.001444936568705701			
[mm] SIM translation stage pos	-190.132523	-190.1425803651734			
[mm] SIM translation stage offset	0	0.01005778216563158			
[s] Observation start time (MET)	225139142.184000	225137872.13977			
Observation start date	2005-02-18T18:37:58	2005-02-18T18:17:52			
[s] Observation end time (MET)	225148142.184000	225149268.60278			
Observation end date	2005-02-18T21:07:58	2005-02-18T21:27:48			
Read mode	TIMED	TIMED			

2.3 Aspect

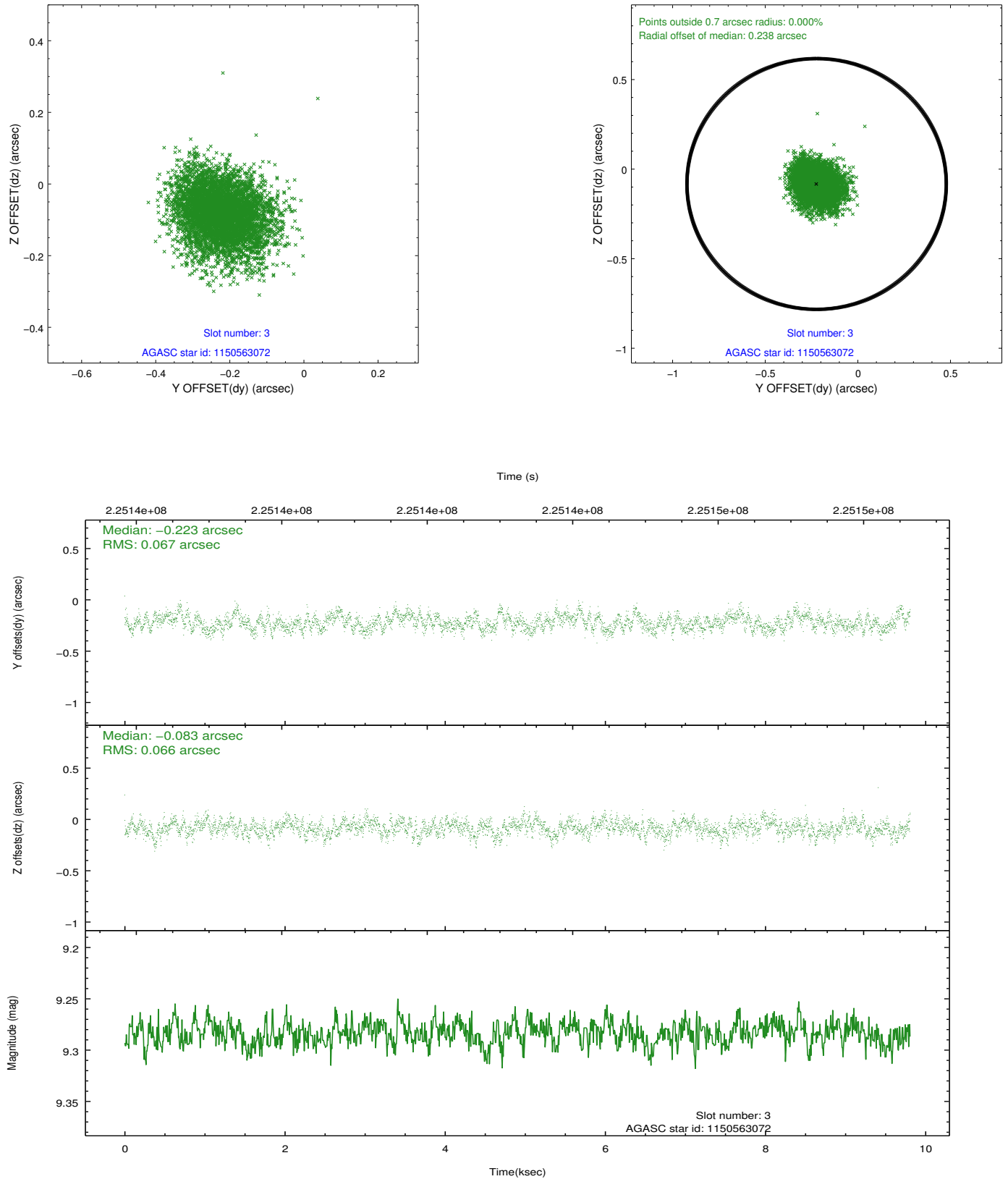


Slot Statistics

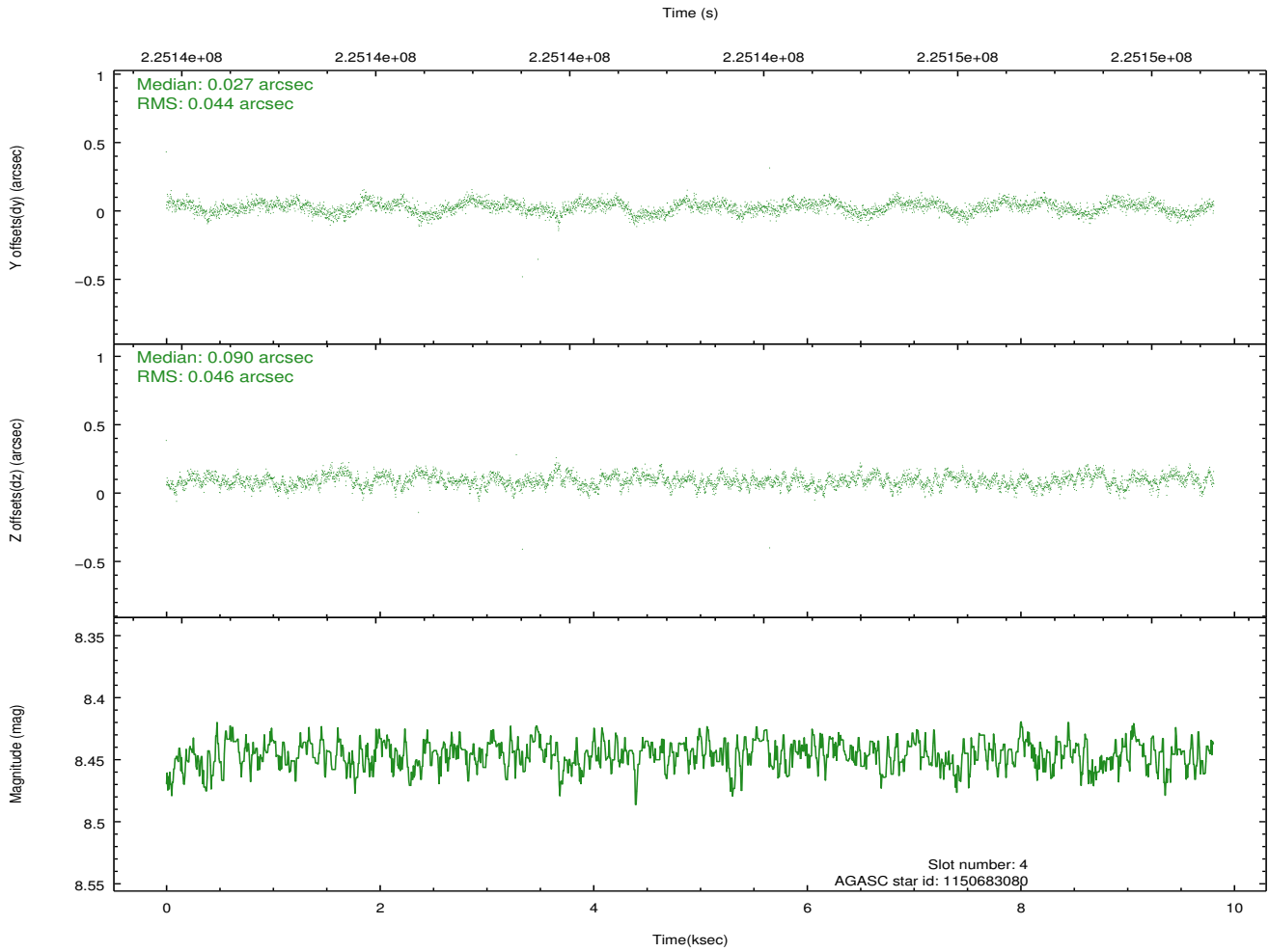
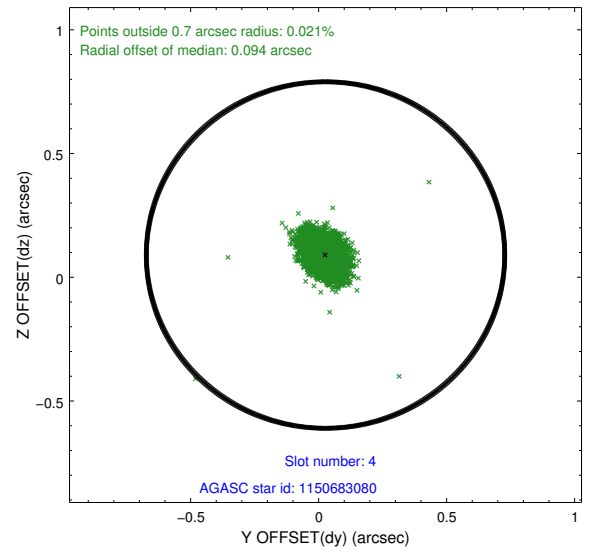
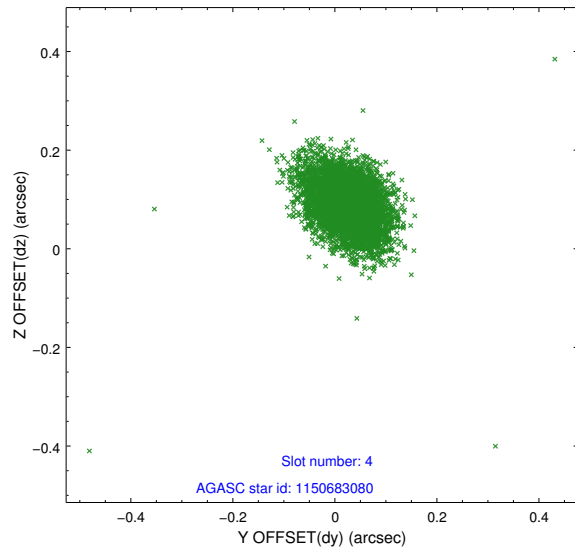
slot	status	id	mag	n_pts	med_dy	med_dz	dr1	dr2	ra	dec	mean_y	mean_z
0	FID	ACIS-S-2	7.10	2392	-0.039	-0.013	0.011	0.016	0.000000	0.000000	-759.89	-1732.47
1	FID	ACIS-S-4	7.20	2393	0.075	0.022	0.006	0.011	0.000000	0.000000	2153.23	175.53
2	FID	ACIS-S-5	7.23	2393	-0.066	-0.001	0.011	0.018	0.000000	0.000000	-1812.09	169.73
3	GUIDE	1150563072	9.28	4784	-0.223	-0.083	0.100	0.161	296.403777	-55.285043	1050.26	1694.47
4	GUIDE	1150683080	8.45	4784	0.027	0.090	0.065	0.109	297.306836	-54.888638	790.53	-635.42
5	GUIDE	1150683376	8.62	4786	-0.083	0.110	0.072	0.121	297.355078	-54.524093	1660.49	-1623.51
6	GUIDE	1150683784	8.66	4785	0.125	-0.210	0.070	0.110	296.840045	-54.917208	1388.34	129.66
7	GUIDE	1150685296	8.25	4783	0.154	0.098	0.067	0.106	297.953238	-55.420860	-1507.86	-241.42

2.4 Star Slots

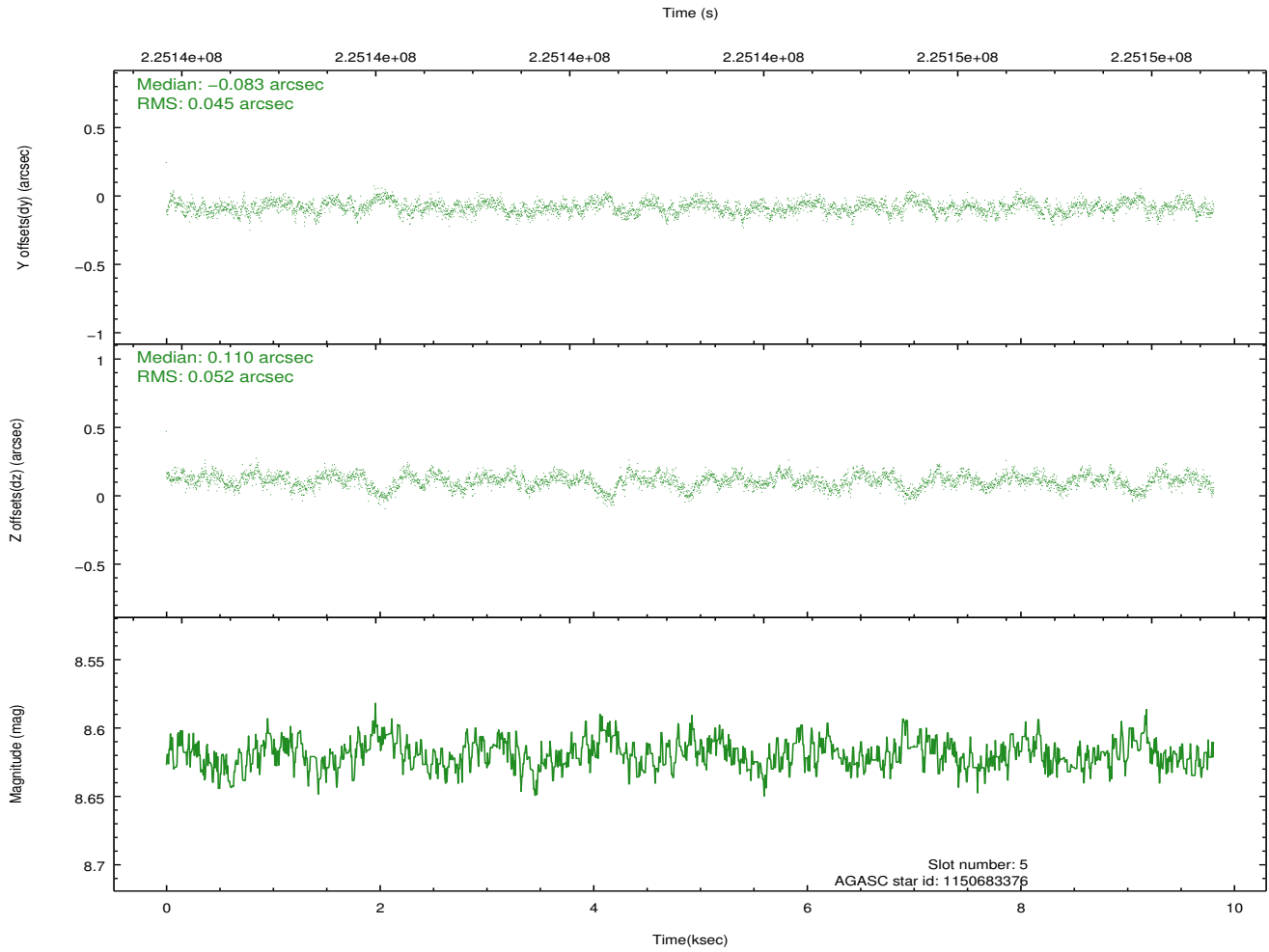
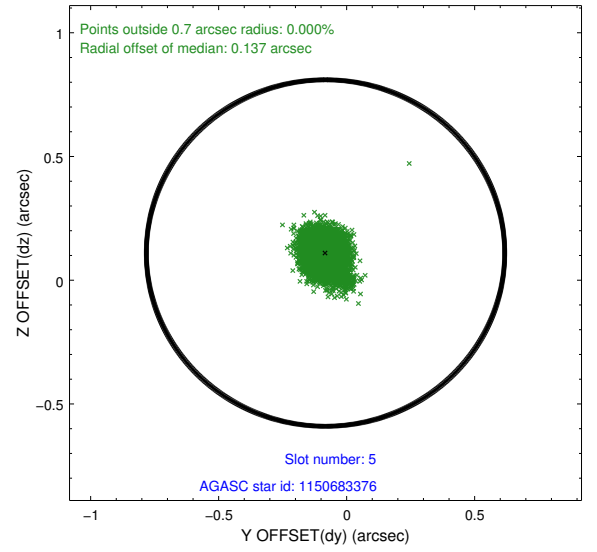
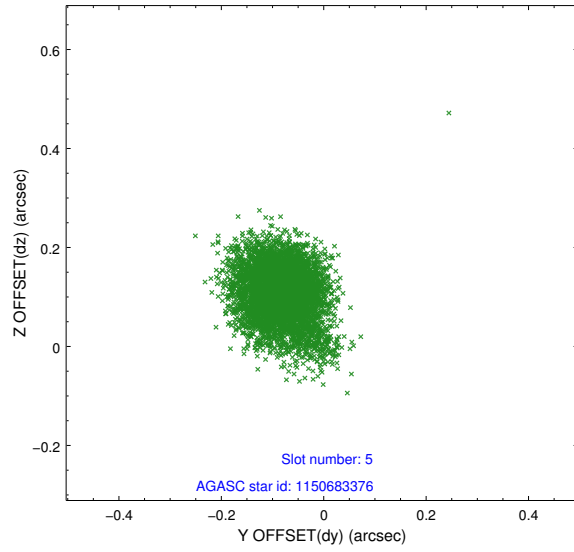
2.4.1 Slot 3



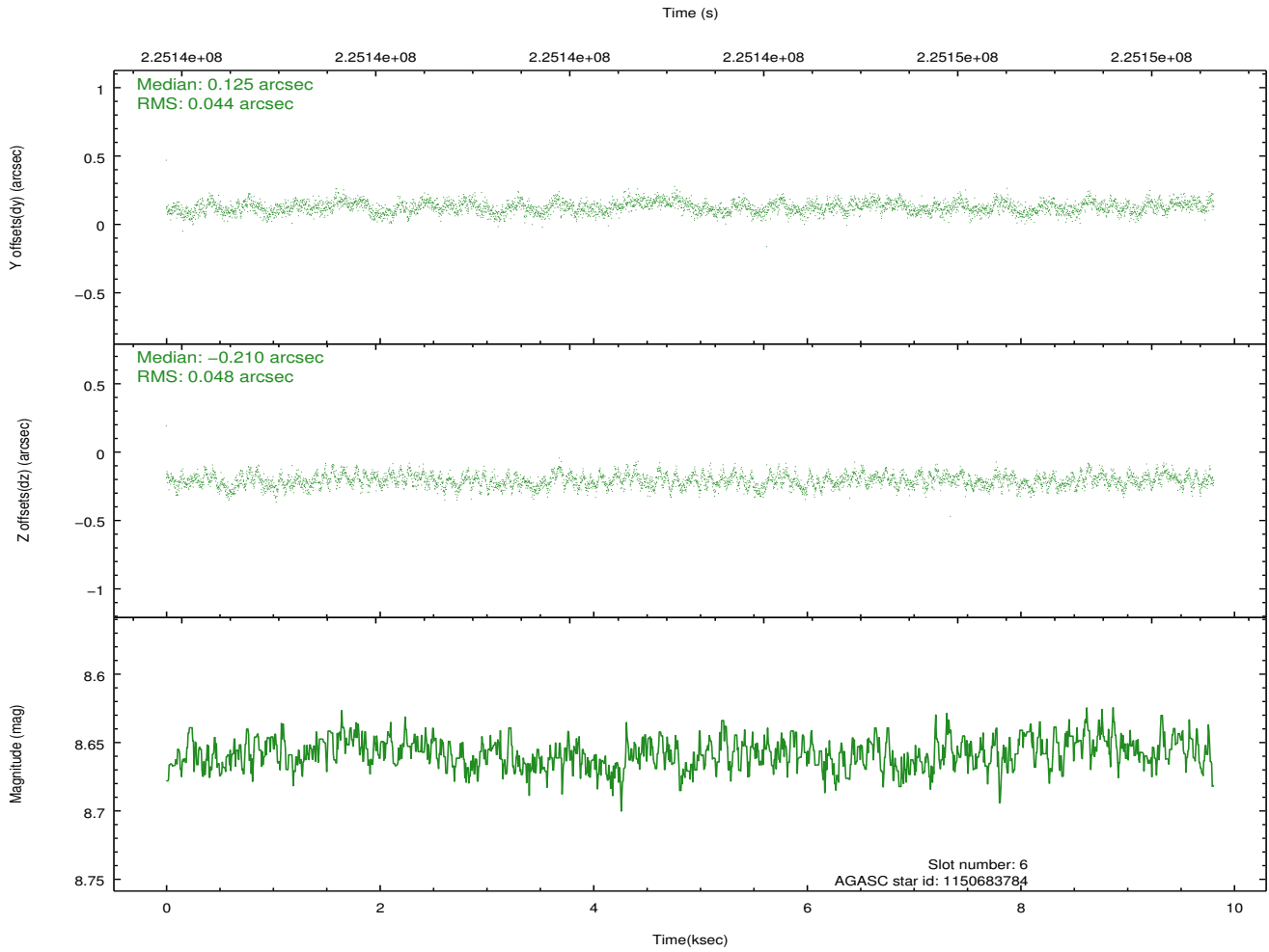
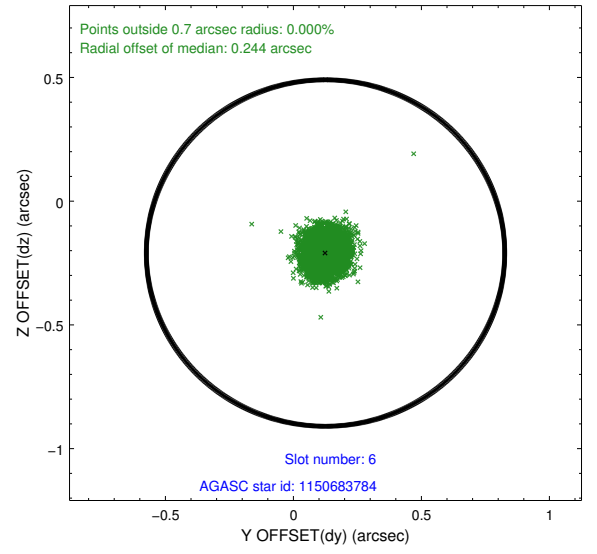
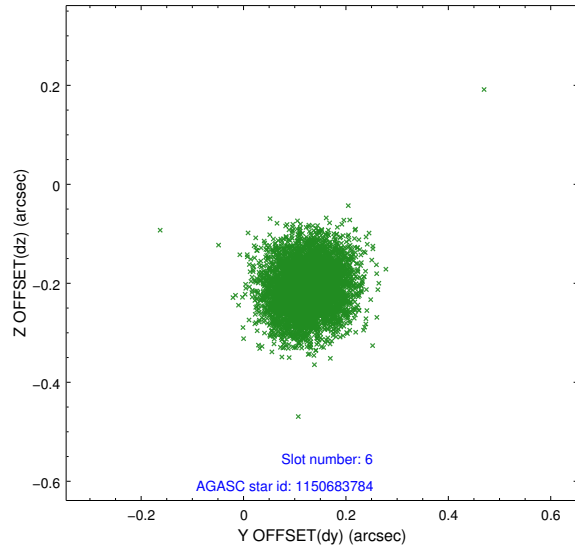
2.4.2 Slot 4



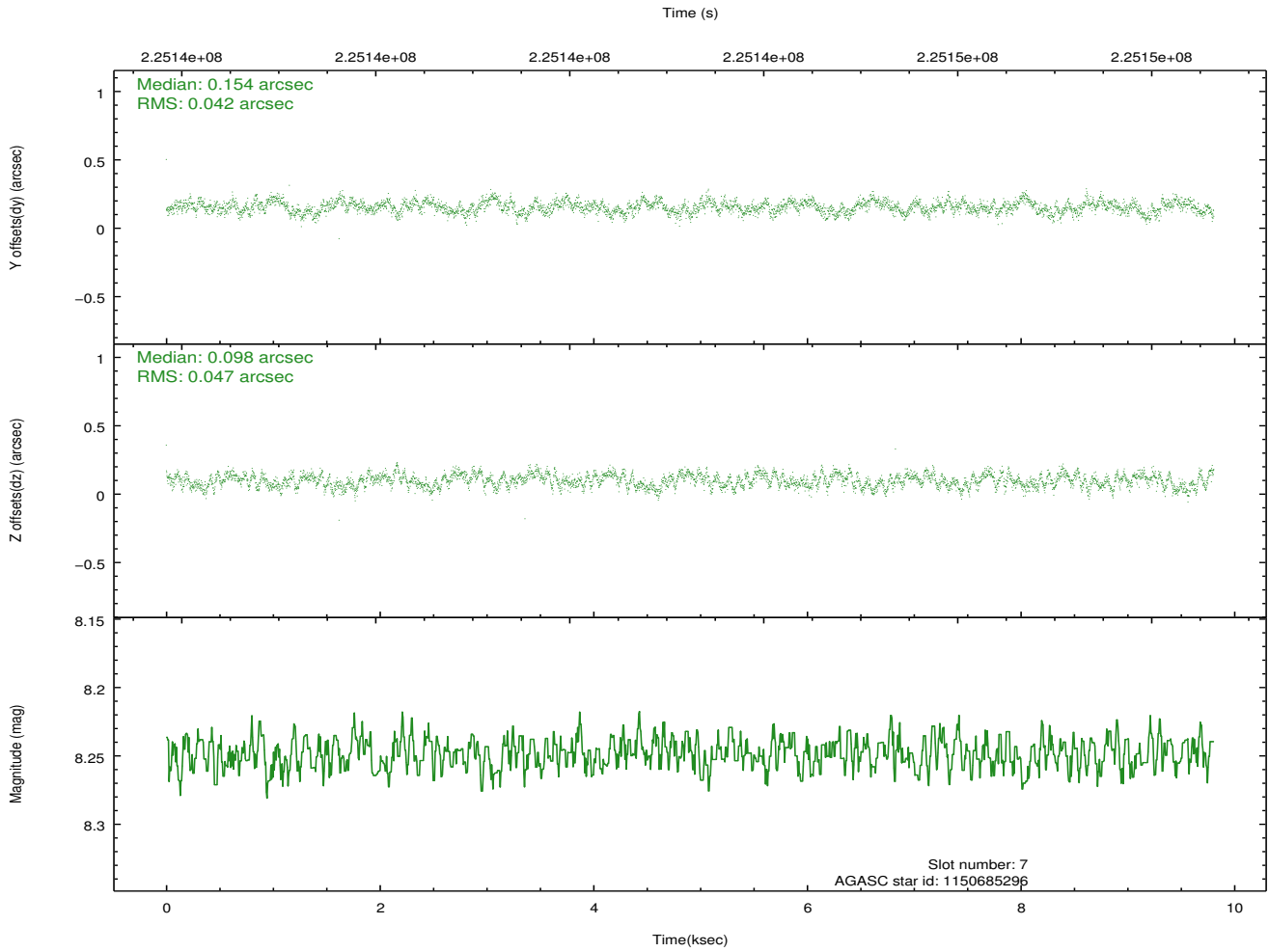
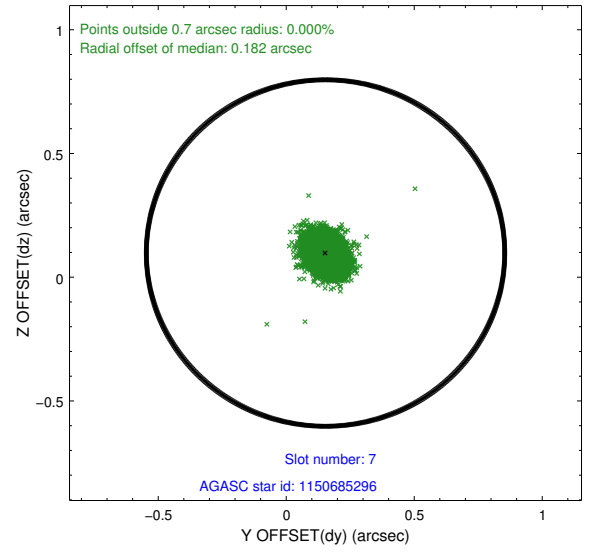
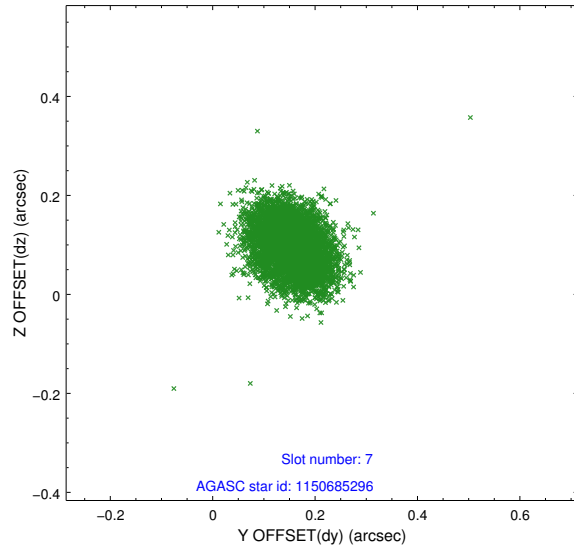
2.4.3 Slot 5



2.4.4 Slot 6

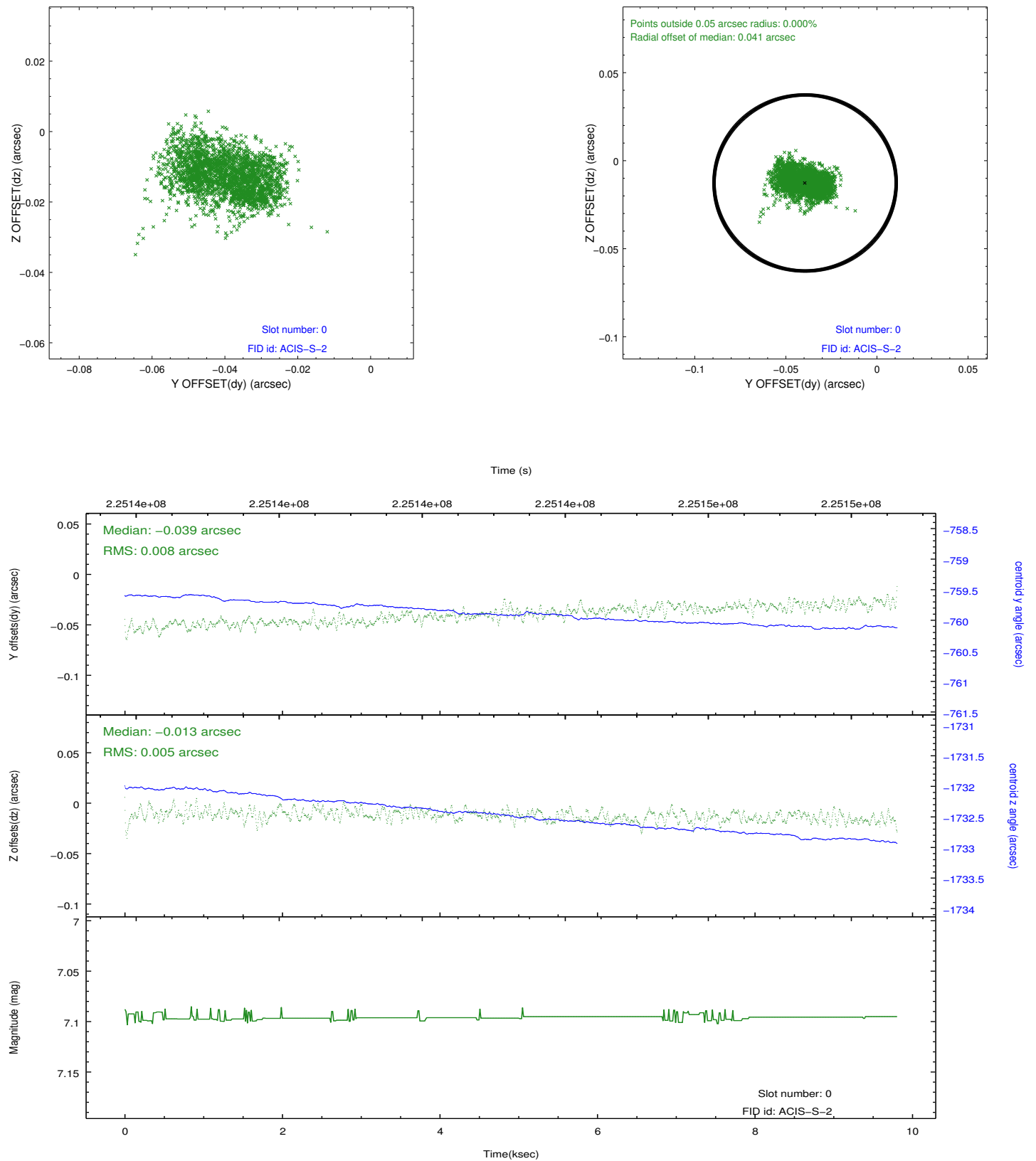


2.4.5 Slot 7

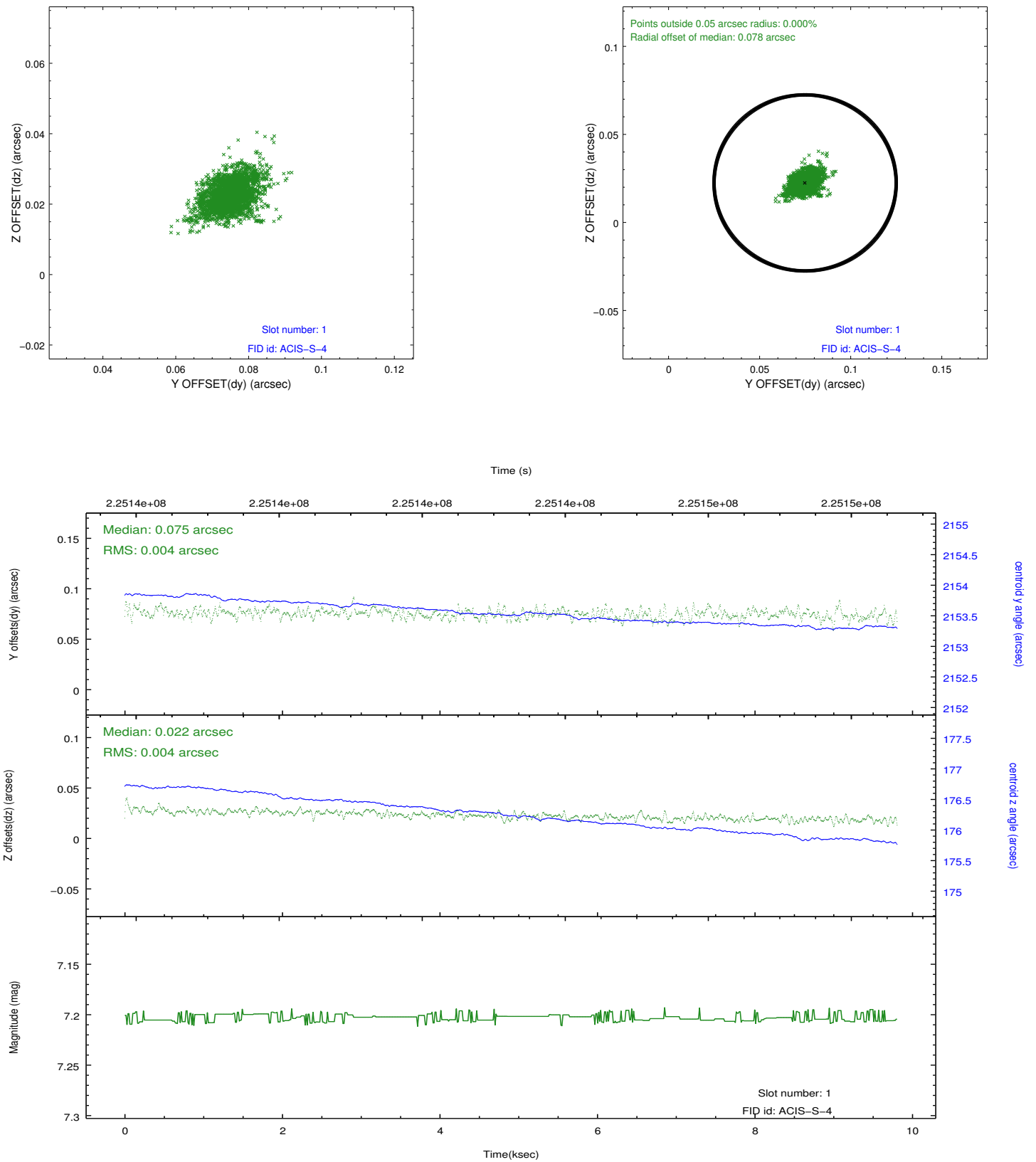


2.5 FID Slots

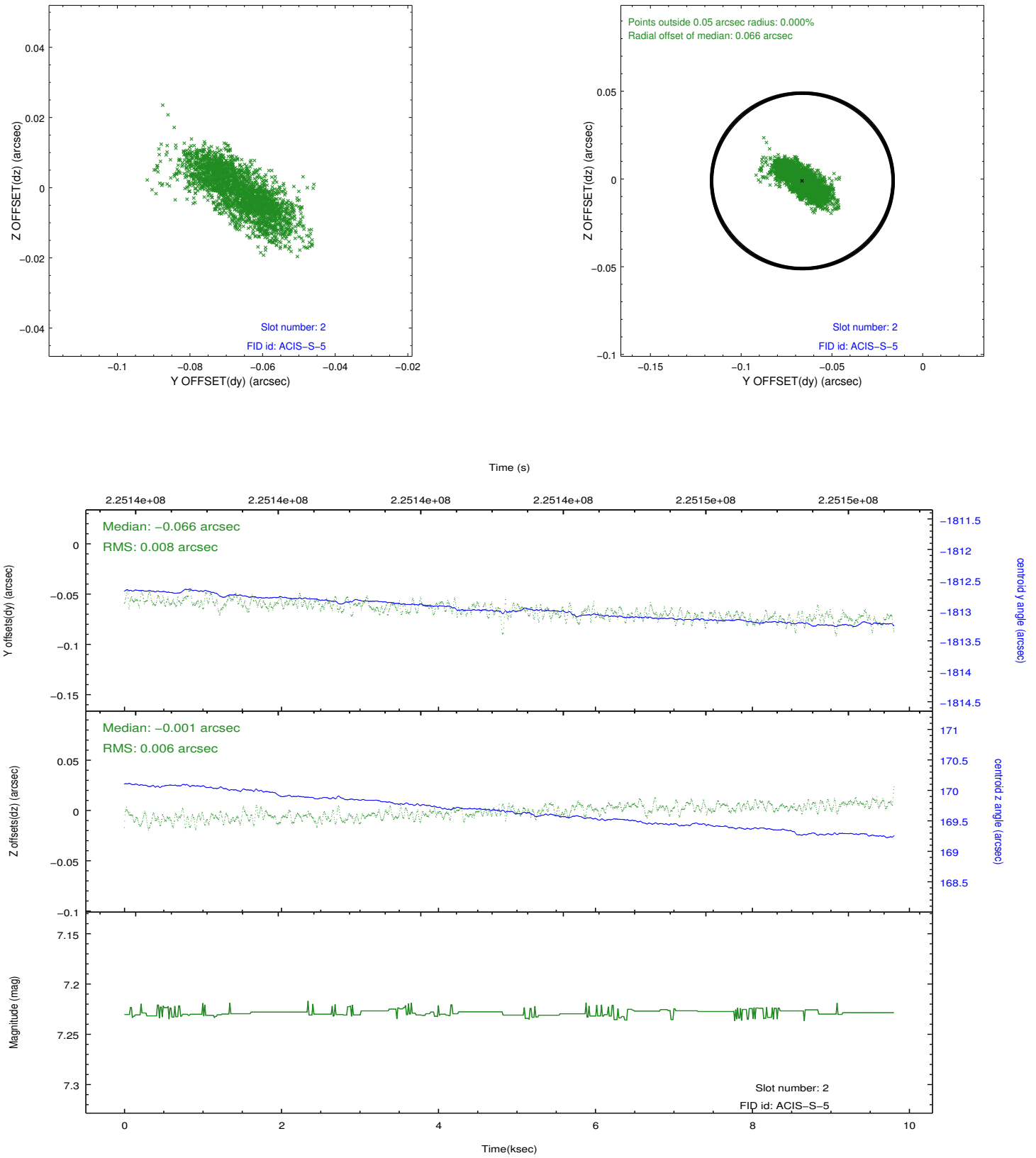
2.5.1 Slot 0



2.5.2 Slot 1



2.5.3 Slot 2



A Summary

A.1 Status

V&V Scientist	Jen Lauer
V&V Date (YYYY-MM-DD)	2013.01.10
V&V Edition	1
V&V Disposition and Status	OK
V&V Charge Time	8.959999

A.2 Comments