

V&V Reference Report

L2 ASCDS Version : 8.4.3

Observation 55690 - L2 Version 2
Chandra X-Ray Center

L2 Processing Date : Feb 2 2012

Contents

| | | |
|----------|-------------------------------|----------|
| 1 | Front | 2 |
| 2 | OBI | 3 |
| 2.1 | OBI | 3 |
| 2.1.1 | Images | 3 |
| 2.1.2 | Bias | 3 |
| 2.1.3 | Parameters | 4 |
| 2.1.4 | Events | 4 |
| 2.2 | Compared Parameters | 5 |
| 2.3 | Star Slots | 6 |
| 2.4 | FID Slots | 6 |
| A | Summary | 7 |
| A.1 | Status | 7 |
| A.2 | Comments | 7 |

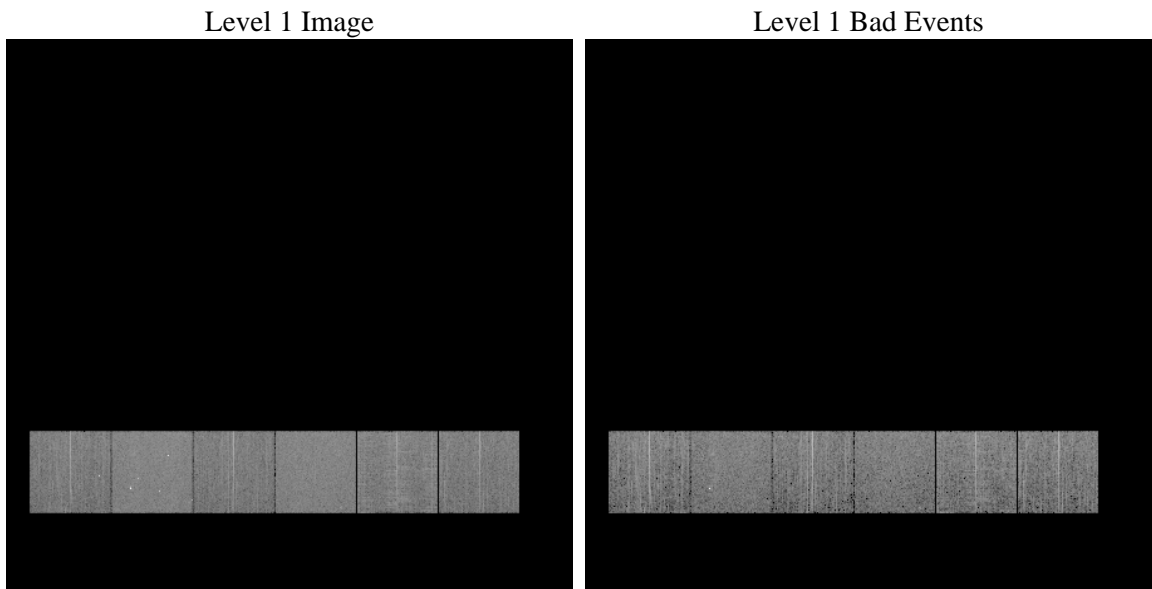
1 Front

| | | |
|----------|---|---|
| seq_num | | Sequence number |
| obs_id | 55690 | Observation id |
| title | ACIS-456789 diagnostics | Proposal title |
| observer | CHANDRA engineering request/realtime commanding | Principal investig |
| object | | Source name |
| dtcycle | 0 | |
| cycle | P | events from which exps? Prim/Second/Both |
| ra_targ | 0.0 | Observer's specified target RA [deg] |
| dec_targ | 0.0 | Observer's specified target Dec [deg] |
| ra_nom | 352.00209385381 | Nominal RA [deg] |
| dec_nom | -56.028787169842 | Nominal Dec [deg] |
| roll_nom | 239.56720844153 | Nominal Roll [deg] |
| revision | 2 | Processing version of data |
| ontime | 4898.7178336978 | Sum of GTIs [s] |
| livetime | 4836.6873188338 | Livetime [s] |
| ontime4 | 4898.5947136879 | Sum of GTIs [s] |
| ontime5 | 4898.6767936945 | Sum of GTIs [s] |
| ontime6 | 4898.6357536912 | Sum of GTIs [s] |
| ontime7 | 4898.7178336978 | Sum of GTIs [s] |
| ontime8 | 4898.5536736846 | Sum of GTIs [s] |
| ontime9 | 4898.7588737011 | Sum of GTIs [s] |
| l2events | 222910 | Number of level 2 events |

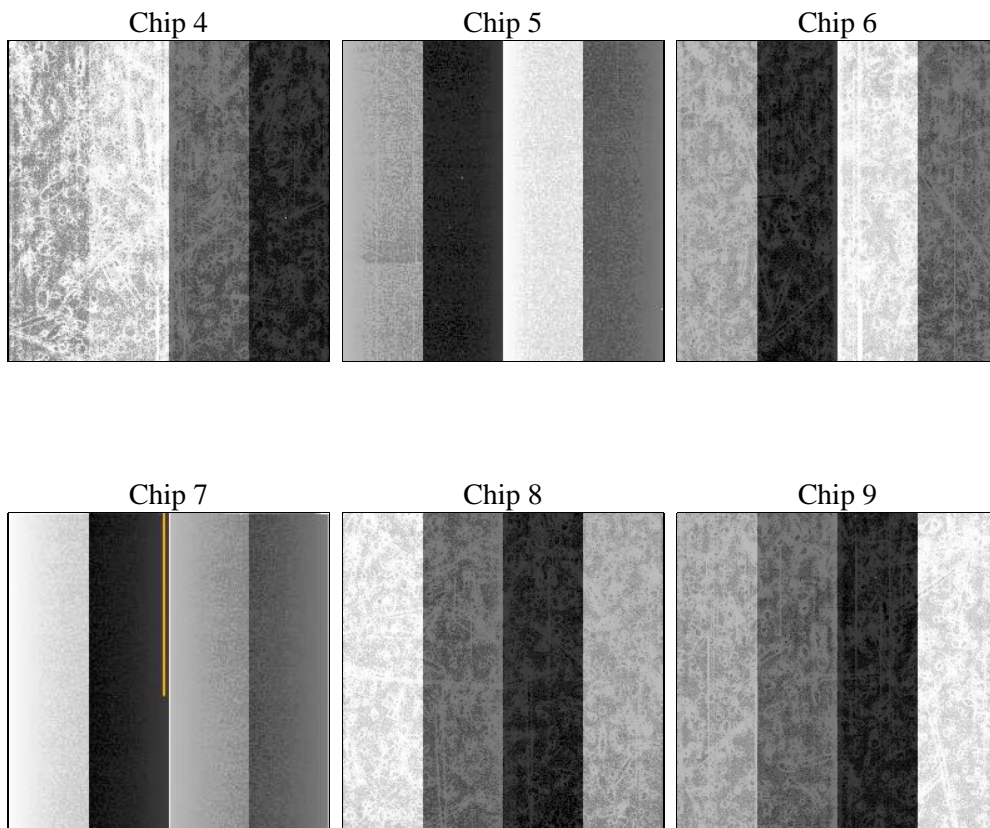
2 OBI

2.1 OBI

2.1.1 Images



2.1.2 Bias



2.1.3 Parameters

| | | | | | |
|----------|---------------------|--------------------------------|----------------|-----------------|---|
| obi_num | 0 | Obi number | sched_exp_time | 0.0 | [s] Scheduled observation exposure time |
| ascdsver | 8.4.3 | Processing system revision | ontime | 4898.7178336978 | Sum of GTIs [s] |
| caldsver | 4.4.7 | | ontime4 | 4898.5947136879 | Sum of GTIs [s] |
| date | 2012-02-03T00:48:51 | Date and time of file creation | ontime5 | 4898.6767936945 | Sum of GTIs [s] |
| revision | 2 | Processing version of data | ontime6 | 4898.6357536912 | Sum of GTIs [s] |
| | | | ontime7 | 4898.7178336978 | Sum of GTIs [s] |
| | | | ontime8 | 4898.5536736846 | Sum of GTIs [s] |
| | | | ontime9 | 4898.7588737011 | Sum of GTIs [s] |
| | | | l1events | 491776 | Number of level 1 events |

2.1.4 Events

| | ccd 4 | ccd 5 | ccd 6 | ccd 7 | ccd 8 | ccd 9 | | ccd 4 | ccd 5 | ccd 6 | ccd 7 | ccd 8 | ccd 9 |
|-----------------|-------|-------|-------|-------|-------|-------|----------------|-------|-------|-------|-------|-------|-------|
| level 1 events | 73749 | 96703 | 73564 | 90666 | 84065 | 73029 | grade 0 events | 18081 | 8168 | 17291 | 8984 | 19135 | 16809 |
| rejected events | 41748 | 41028 | 40119 | 38234 | 43309 | 40845 | | 24% | 8% | 23% | 9% | 22% | 23% |
| rejected % | 56% | 42% | 54% | 42% | 51% | 55% | grade 1 events | 186 | 105 | 114 | 84 | 131 | 102 |
| | | | | | | | | 0% | 0% | 0% | 0% | 0% | 0% |
| | | | | | | | grade 2 events | 5245 | 19442 | 6034 | 11223 | 8065 | 5754 |
| | | | | | | | | 7% | 20% | 8% | 12% | 9% | 7% |
| | | | | | | | grade 3 events | 2291 | 2405 | 2269 | 4724 | 3037 | 2288 |
| | | | | | | | | 3% | 2% | 3% | 5% | 3% | 3% |
| | | | | | | | grade 4 events | 2132 | 2305 | 2186 | 4658 | 2907 | 2212 |
| | | | | | | | | 2% | 2% | 2% | 5% | 3% | 3% |
| | | | | | | | grade 5 events | 2439 | 5554 | 2406 | 5945 | 3213 | 2724 |
| | | | | | | | | 3% | 5% | 3% | 6% | 3% | 3% |
| | | | | | | | grade 6 events | 4270 | 23399 | 5696 | 22875 | 7643 | 5145 |
| | | | | | | | | 5% | 24% | 7% | 25% | 9% | 7% |
| | | | | | | | grade 7 events | 39105 | 35325 | 37568 | 32173 | 39934 | 37995 |
| | | | | | | | | 53% | 36% | 51% | 35% | 47% | 52% |

2.2 Compared Parameters

| Parameter | Planned | Actual | Parameter | Planned | Actual |
|-----------------------------------|---------------------|----------------------|---------------------------------------|-----------|---------|
| Instrument | ACIS | ACIS | Obspar format version number | 7 | 7 |
| Detector | ACIS-456789 | ACIS-456789 | Obspar file type | PREDICTED | ACTUAL |
| Grating | NONE | NONE | Obspar update status | NONE | UPDATED |
| Data mode | FAINT | FAINT | Number of optional ACIS chips dropped | 0 | 0 |
| Observation mode | SECONDARY | SECONDARY | On-chip summing requested | N | N |
| [deg] Pointing RA | 0 | 352.0020938538077 | Subarray requested | NONE | NONE |
| [deg] Pointing Dec | 0 | -56.02878716984167 | Alternating exposures requested | N | N |
| [deg] Pointing Roll | 0.0 | 239.5672084415293 | [s] Primary exposure time | 3.2 | 3.2 |
| [mm] SIM focus pos | -1.429586 | -1.428180813131781 | | | |
| [mm] SIM defocus | 0.1037507710433287 | 0.1051558262725154 | | | |
| [mm] SIM translation stage pos | 250.455976 | 250.466033080201 | | | |
| [mm] SIM translation stage offset | 0 | -0.01005468664627074 | | | |
| [s] Observation start time (MET) | 412414654.173121 | 412414653.14812 | | | |
| Observation start date | 2011-01-26T07:37:34 | 2011-01-26T07:37:33 | | | |
| [s] Observation end time (MET) | 412421964.473499 | 412421963.4485 | | | |
| Observation end date | 2011-01-26T09:39:24 | 2011-01-26T09:39:23 | | | |
| Read mode | TIMED | TIMED | | | |

2.3 Star Slots

2.4 FID Slots

A Summary

A.1 Status

| | |
|----------------------------|-----------------|
| V&V Scientist | Joy Nichols |
| V&V Date (YYYY-MM-DD) | 2012.02.03 |
| V&V Edition | 1 |
| V&V Disposition and Status | OK |
| V&V Charge Time | 4.8987178336978 |

A.2 Comments