

V&V Reference Report

L2 ASCDS Version : 7.6.7

Observation 5540 - L2 Version 002
Chandra X-Ray Center

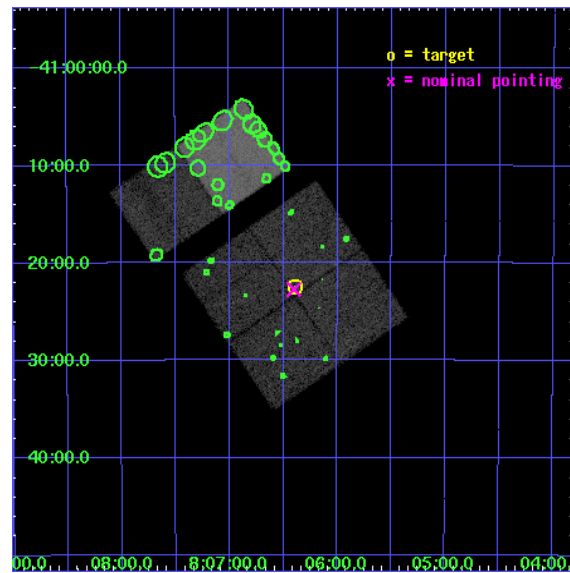
L2 Processing Date: Feb 23 2006

Contents

1	Front	2
2	OBI	3
2.1	OBI	3
2.1.1	Images	3
2.1.2	Bias	3
2.1.3	Parameters	4
2.1.4	Events	4
2.2	Compared Parameters	5
2.3	Aspect	6
2.4	Star Slots	9
2.4.1	Slot 3	9
2.4.2	Slot 4	10
2.4.3	Slot 5	11
2.4.4	Slot 6	12
2.4.5	Slot 7	13
2.5	FID Slots	14
2.5.1	Slot 0	14
2.5.2	Slot 1	15
2.5.3	Slot 2	16
3	Point Sources	17
A	Summary	18
A.1	Status	18
A.2	Comments	18

1 Front

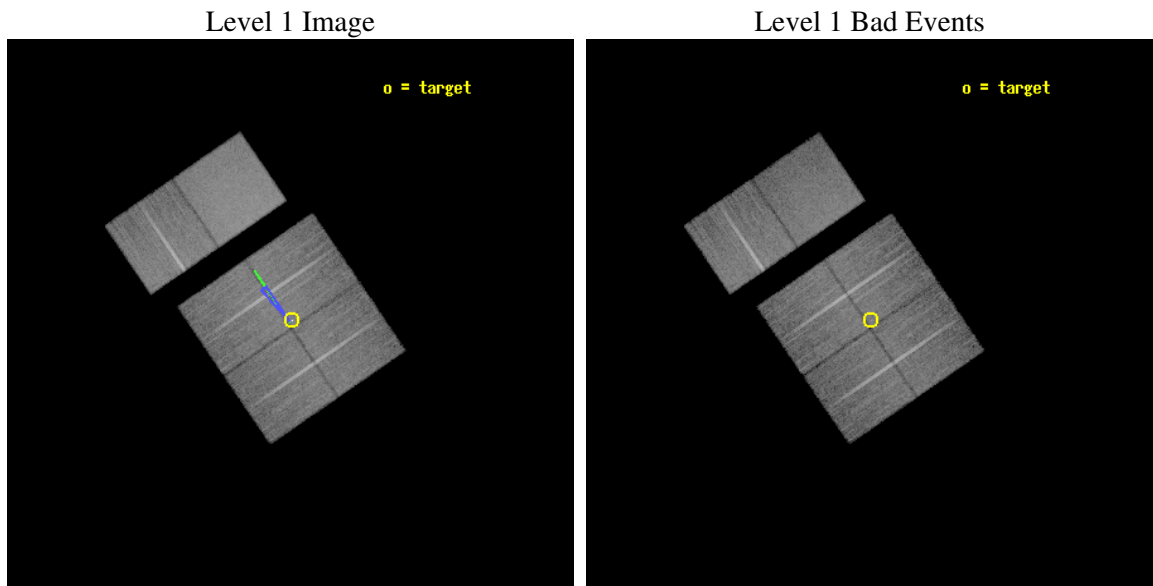
seq_num	500533
obs_id	5540
title	Astrometric study of isolated neutron stars
observer	Dr Christian Motch
object	RX J0806.4-4123
dtcycle	0
cycle	P
ra_targ	121.5975
dec_targ	-41.37525
ra_nom	121.60079887188
dec_nom	-41.379137267185
roll_nom	325.62699514771
revision	2
ontime	19958.399925649
livetime	19705.674648285
ontime0	19958.399925649
ontime1	19958.399925649
ontime2	19958.399925649
ontime3	19958.399925649
ontime6	19955.158925474
ontime7	19958.399925649
l2events	151097



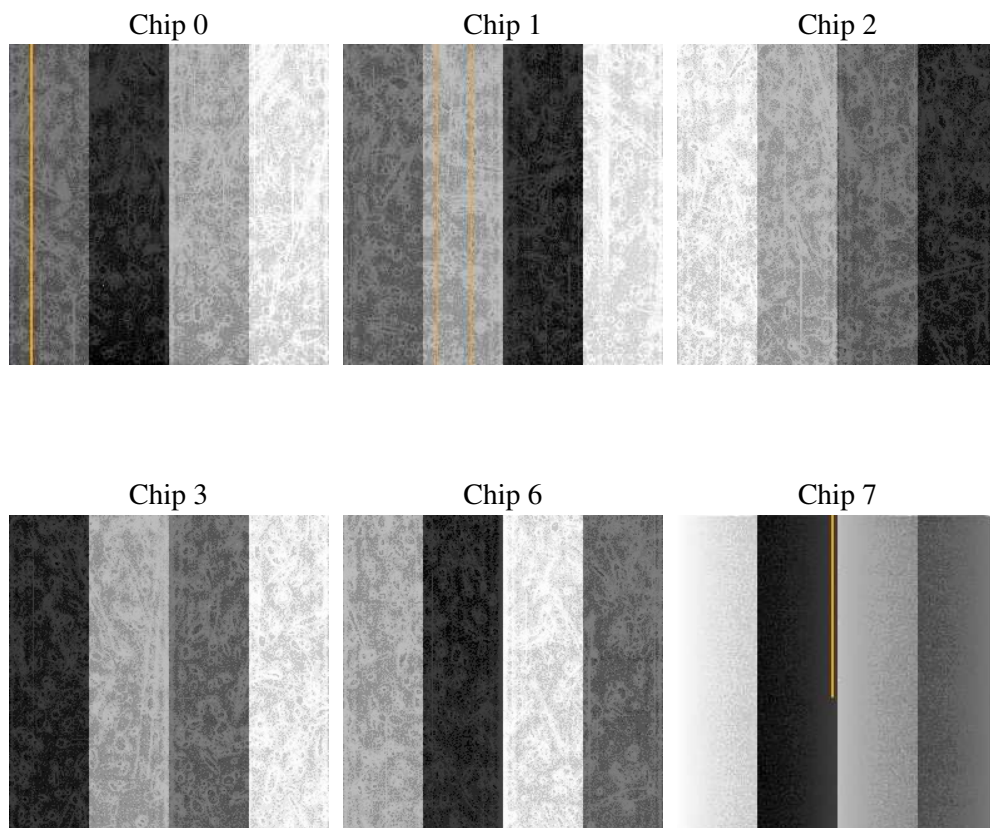
2 OBI

2.1 OBI

2.1.1 Images



2.1.2 Bias



2.1.3 Parameters

obi_num	0
ascdsver	7.6.7
caldsver	3.2.1
date	2006-02-23T21:38:28
revision	2

sched_exp_time	20000.000000
ontime	19964.616783649
ontime0	19964.616783649
ontime1	19964.616783649
ontime2	19964.616783649
ontime3	19964.616783649
ontime6	19961.375783473
ontime7	19964.616803586
l1events	894631

2.1.4 Events

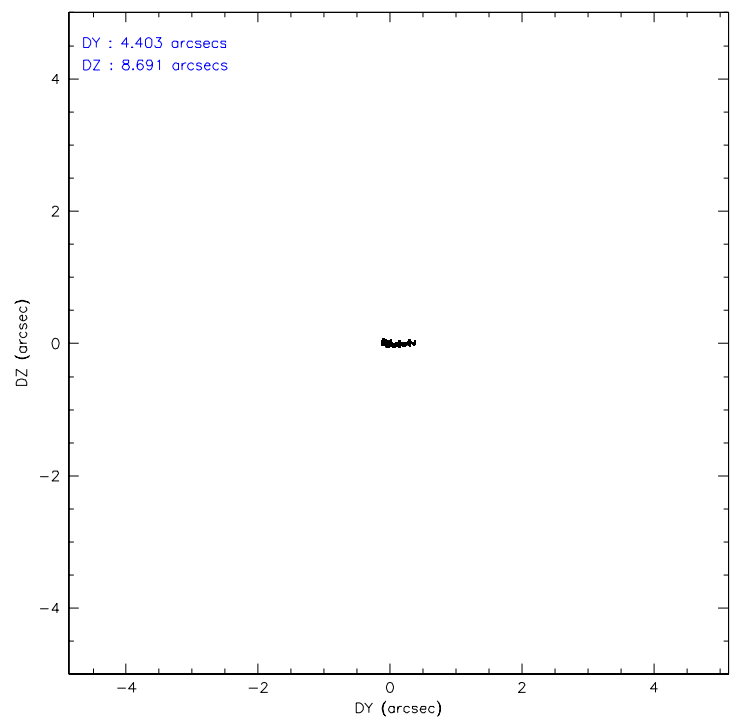
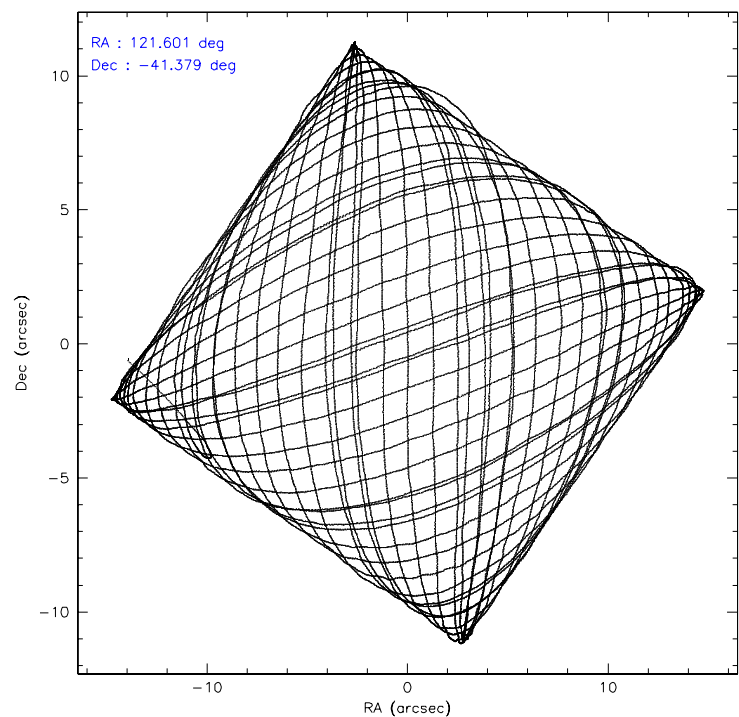
	ccd 0	ccd 1	ccd 2	ccd 3	ccd 6	ccd 7
level 1 events	129293	133182	141999	141752	153119	195286
rejected events	111191	114257	124577	123122	135355	121237
rejected %	85%	85%	87%	86%	88%	62%

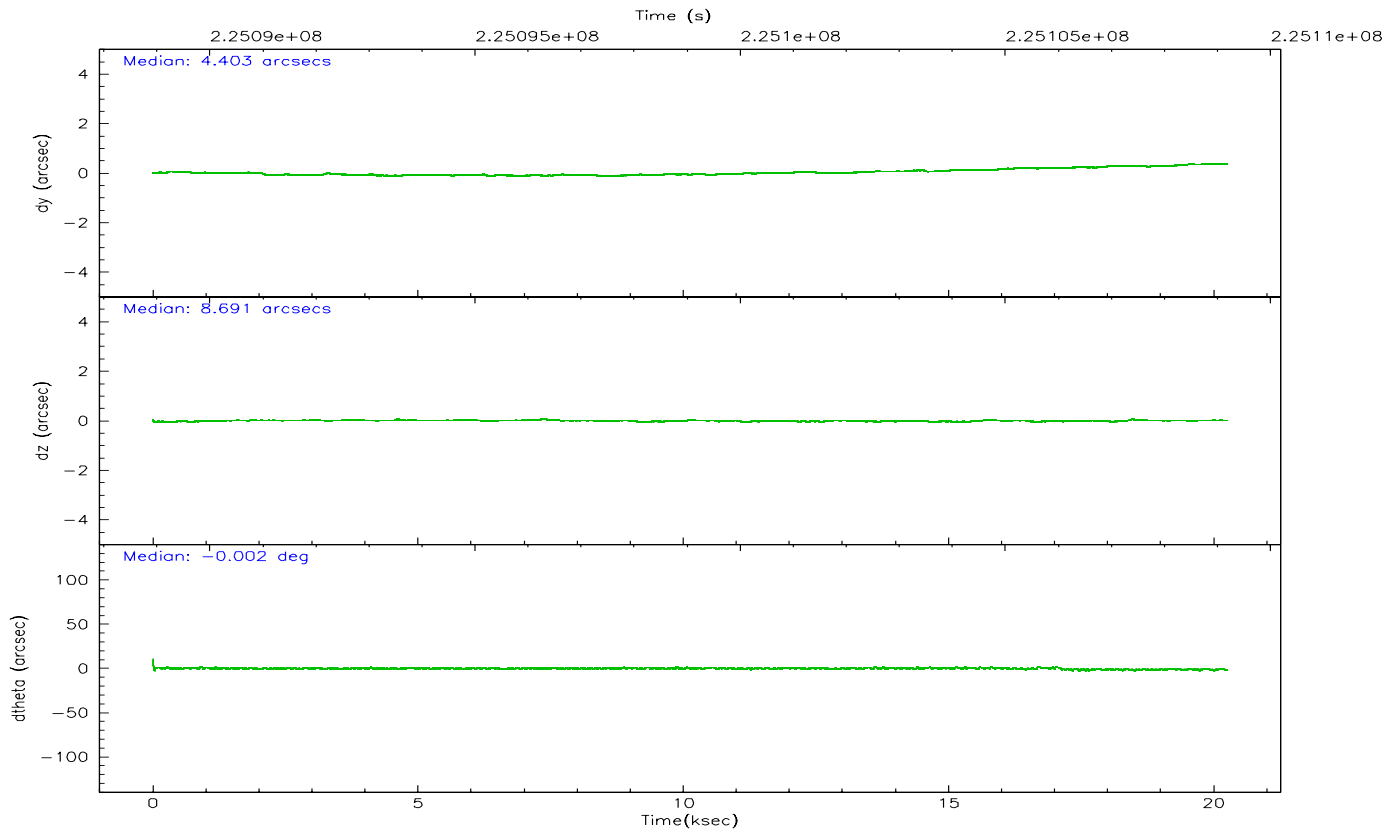
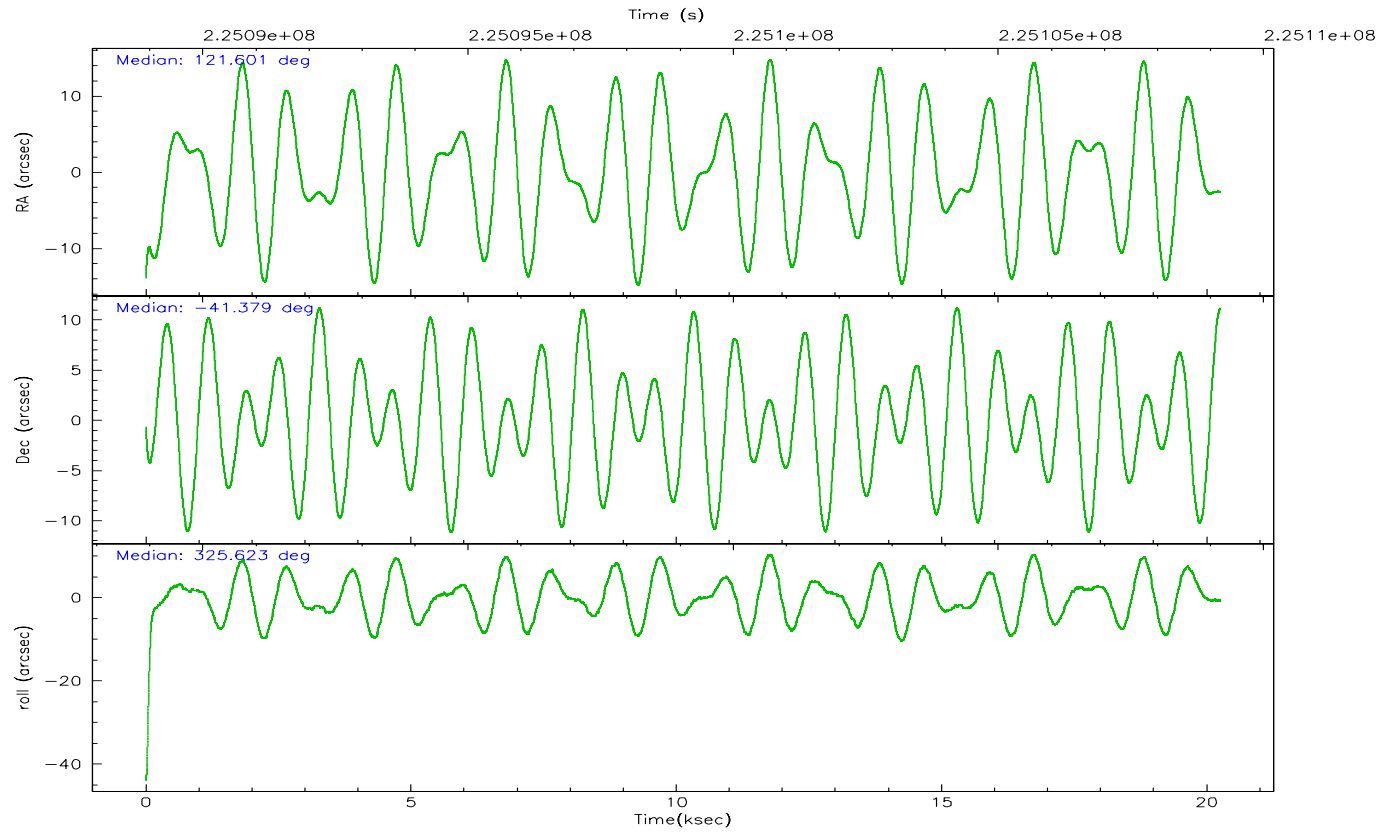
	ccd 0	ccd 1	ccd 2	ccd 3	ccd 6	ccd 7
grade 0 events	7748	7317	7733	8458	6947	4084
	5%	5%	5%	5%	4%	2%
grade 1 events	81	89	94	110	84	116
	0%	0%	0%	0%	0%	0%
grade 2 events	3949	4343	3610	3704	4004	18509
	3%	3%	2%	2%	2%	9%
grade 3 events	1662	1713	1592	1727	1690	3680
	1%	1%	1%	1%	1%	1%
grade 4 events	1604	1749	1623	1684	1634	3557
	1%	1%	1%	1%	1%	1%
grade 5 events	5893	6161	5782	6472	6952	12800
	4%	4%	4%	4%	4%	6%
grade 6 events	3143	3808	2868	3061	3490	44231
	2%	2%	2%	2%	2%	22%
grade 7 events	105213	108002	118697	116536	128318	108309
	81%	81%	83%	82%	83%	55%

2.2 Compared Parameters

Parameter	Planned	Actual	Parameter	Planned	Actual
Instrument	ACIS	ACIS	Obspar format version number	6	6
Detector	ACIS-012367	ACIS-012367	Obspar file type	PREDICTED	ACTUAL
Grating	NONE	NONE	Obspar update status	NONE	UPDATED
Data mode	FAINT	FAINT	On-chip summing requested	N	N
Observation mode	POINTING	POINTING	Subarray requested	NONE	NONE
Pointing RA	121.564440	121.6007988718837	Alternating exposures requested	N	N
Pointing Dec	-41.377175	-41.37913726718463	Primary exposure time	0.000000	3.2
Pointing Roll	325.394294	325.6269951477148			
Roll angle	322.440000	322.440000			
Roll tolerance	5.000000	5.000000			
Roll constraint allows 180D rotation	N	N			
Window start time	223603264.184000	223603264.184000			
Window stop time	227232004.184000	227232004.184000			
SIM focus pos (mm)	-0.782348	-0.7809083437167272			
SIM defocus (mm)	0	0.001439871863259334			
SIM translation stage pos (mm)	-233.592463	-233.5874344608287			
SIM translation stage offset (mm)	0	-0.005018542100998502			
Observation start time	225089183.184000	225088181.16252			
Observation start date	2005-02-18T04:45:19	2005-02-18T04:29:41			
Observation end time	225109183.184000	225109775.351			
Observation end date	2005-02-18T10:18:39	2005-02-18T10:29:35			
Read mode	TIMED	TIMED			

2.3 Aspect



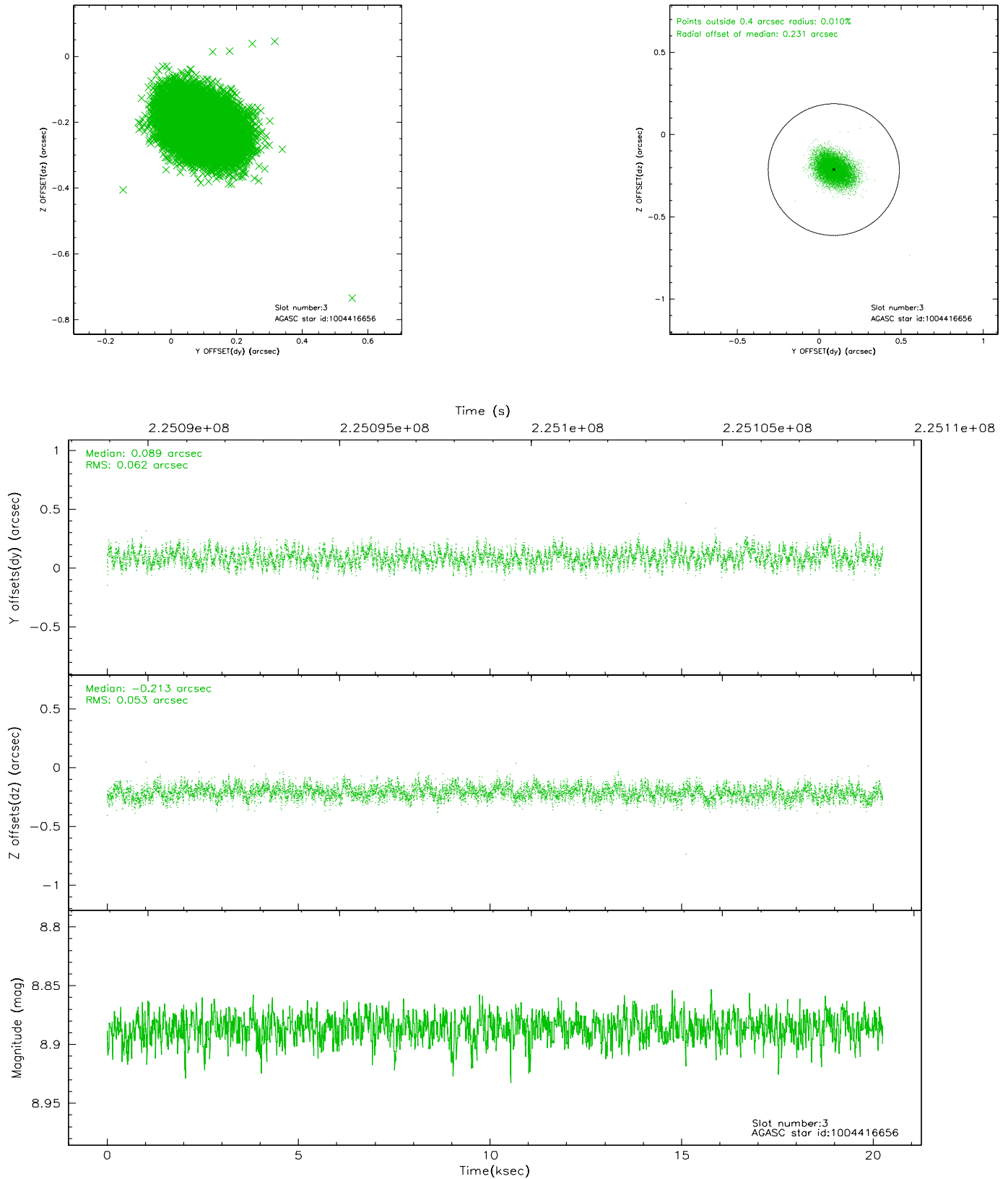


Slot Statistics

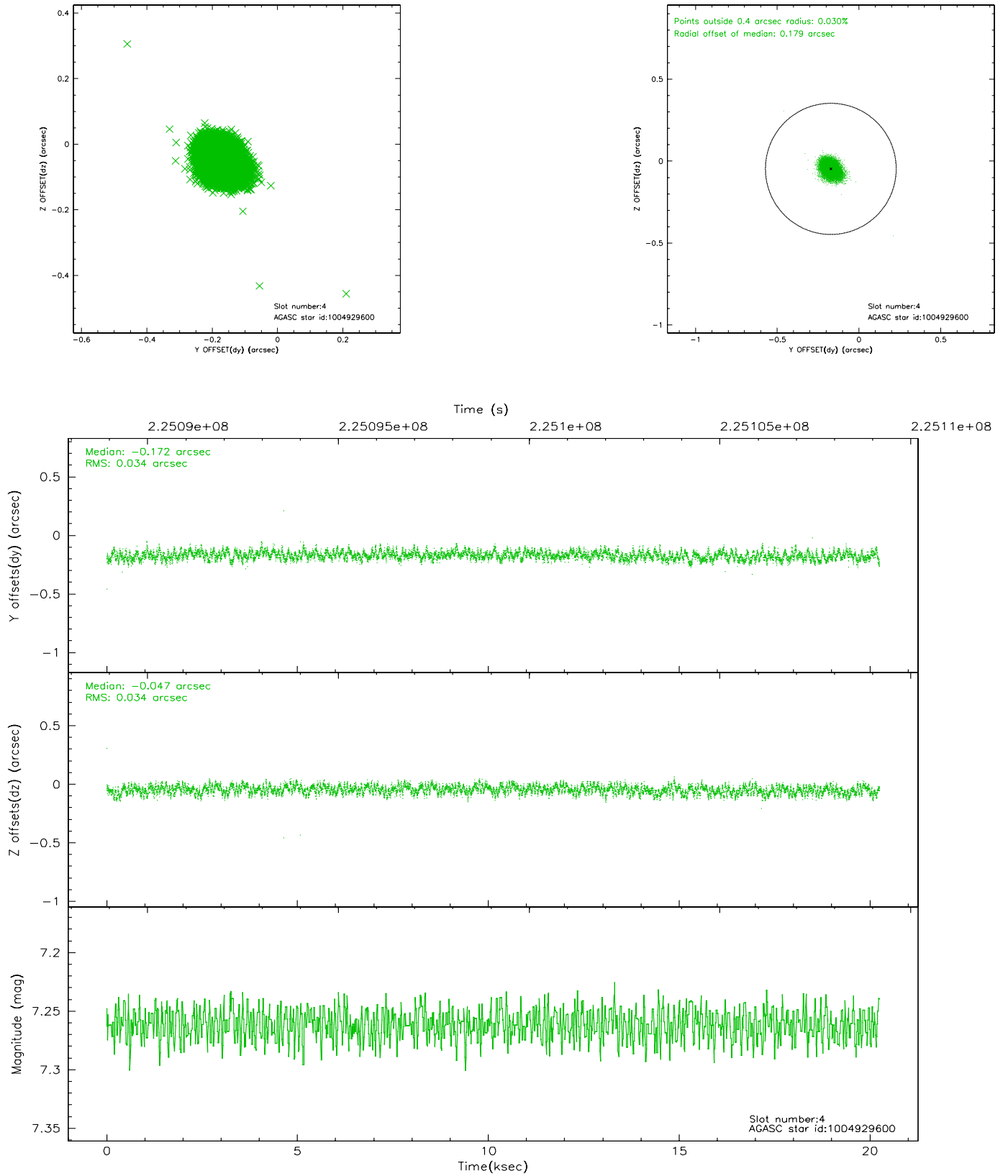
slot	status	id	mag	n_pts	med_dy	med_dz	dr1	dr2	ra	dec	mean_y	mean_z
0	FID	ACIS-I-1	7.24	4939	-0.020	0.056	0.011	0.020	0.000000	0.000000	935.29	-832.07
1	FID	ACIS-I-4	7.17	4940	0.104	-0.005	0.018	0.031	0.000000	0.000000	2155.56	1067.58
2	FID	ACIS-I-5	7.22	4940	-0.181	0.021	0.017	0.032	0.000000	0.000000	-1812.63	1065.67
3	GUIDE	1004416656	8.89	9878	0.089	-0.213	0.086	0.140	121.697217	-40.742577	-998.97	2085.77
4	GUIDE	1004929600	7.26	9880	-0.172	-0.047	0.051	0.082	122.465633	-41.276185	1807.50	1674.06
5	GUIDE	1004973776	7.04	9876	-0.079	0.030	0.041	0.066	121.821280	-41.735378	1301.33	-669.88
6	GUIDE	1004973784	7.64	9880	0.150	0.054	0.069	0.113	121.932741	-41.812272	1704.77	-729.41
7	GUIDE	1004412976	9.36	9863	0.014	0.175	0.080	0.132	120.810429	-41.043846	-2361.00	-182.21

2.4 Star Slots

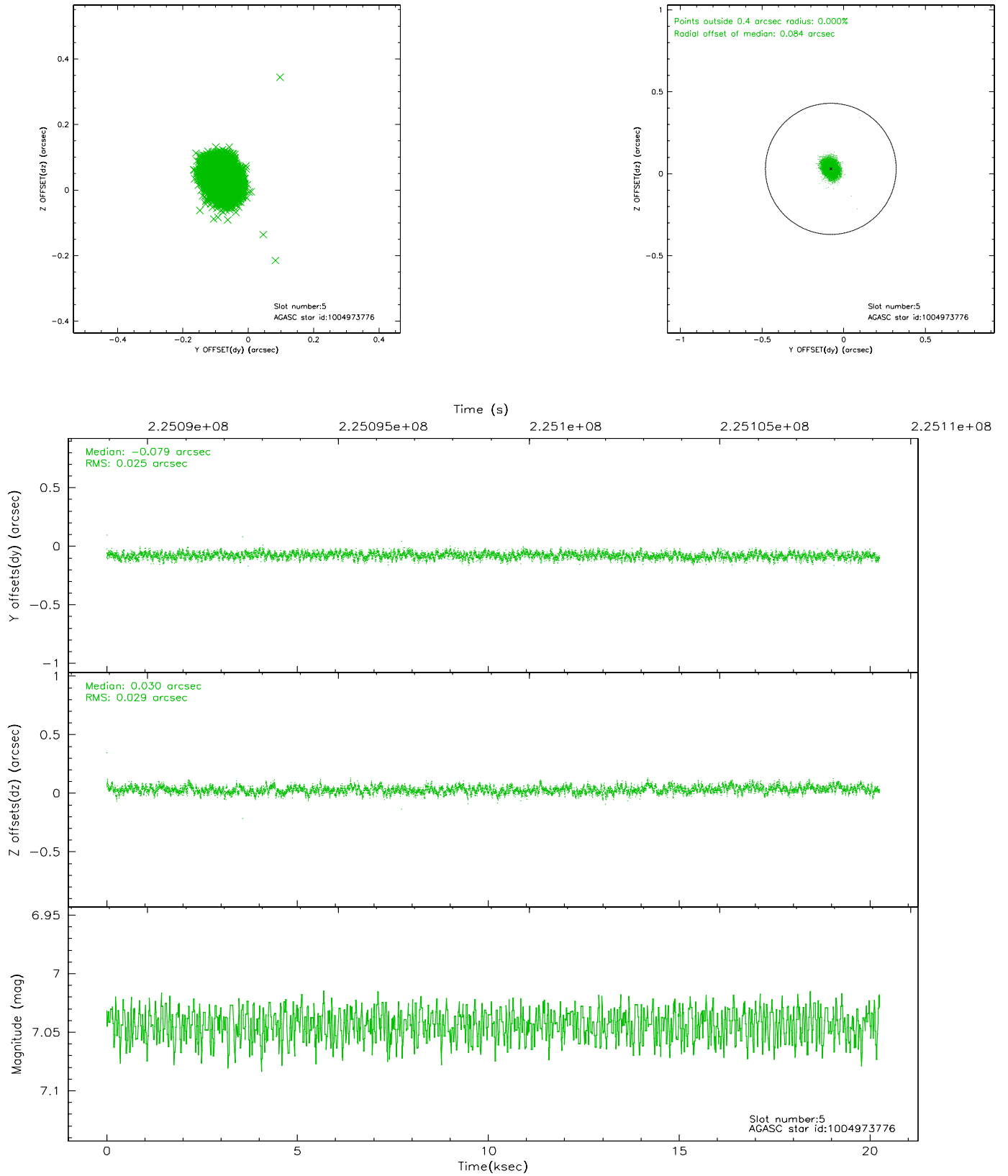
2.4.1 Slot 3



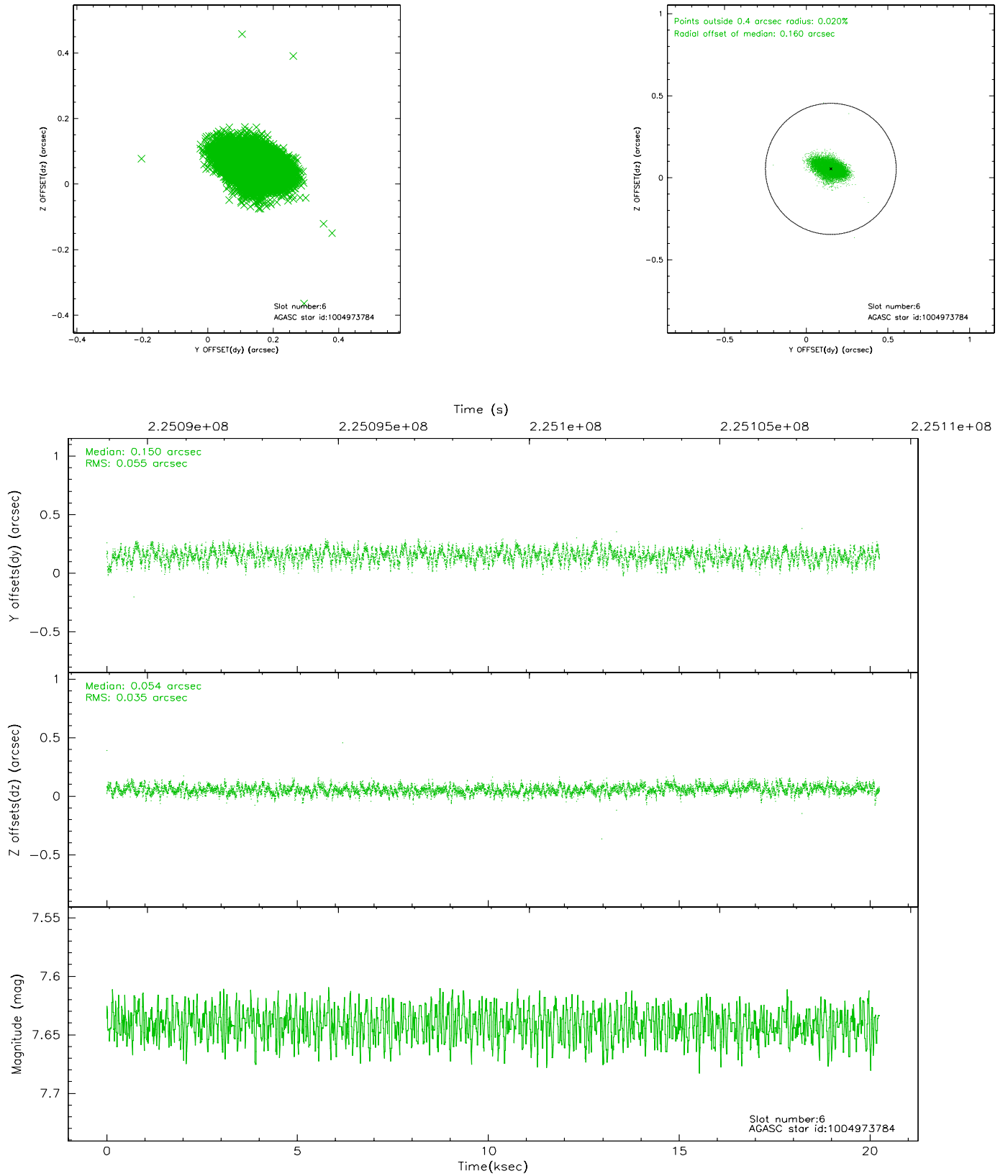
2.4.2 Slot 4



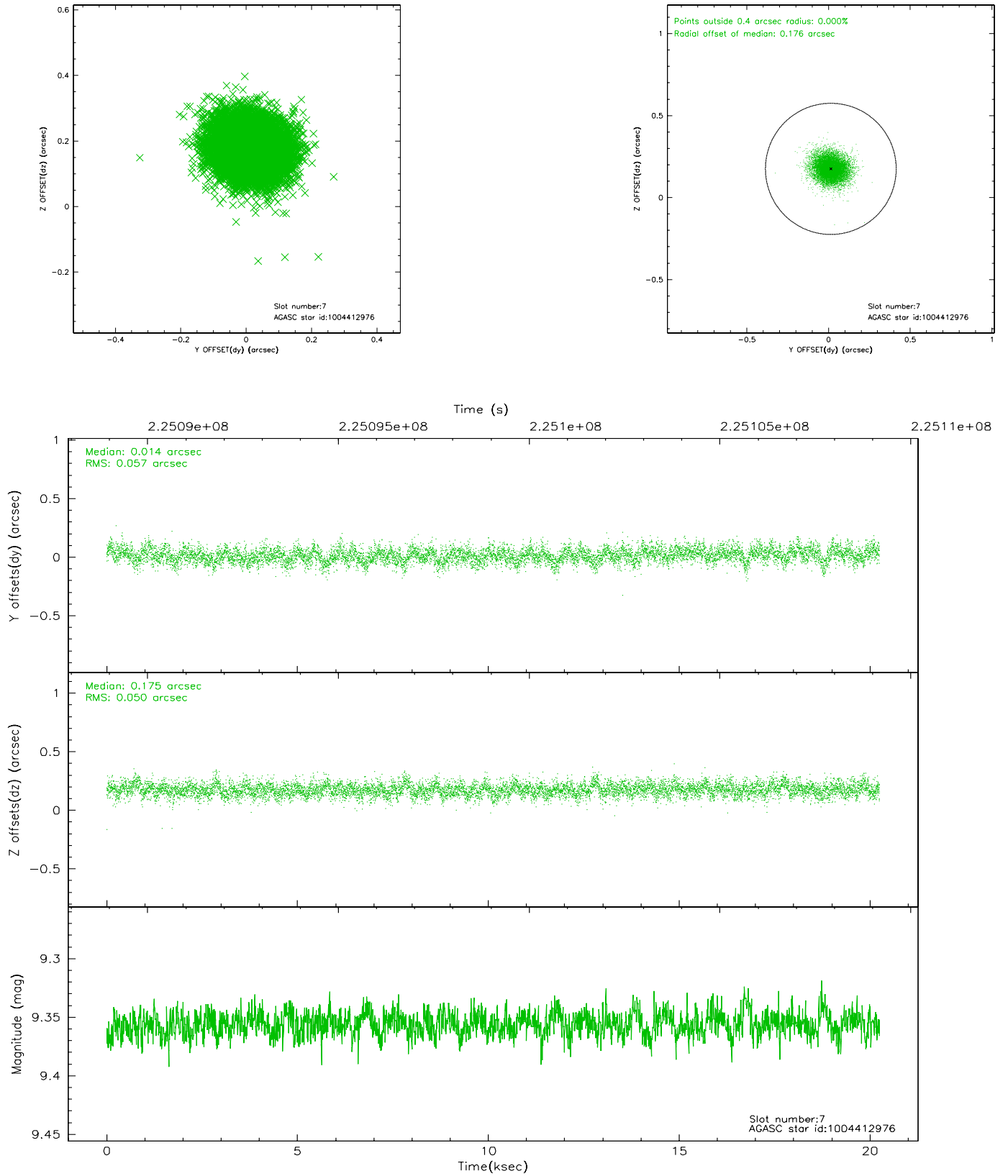
2.4.3 Slot 5



2.4.4 Slot 6

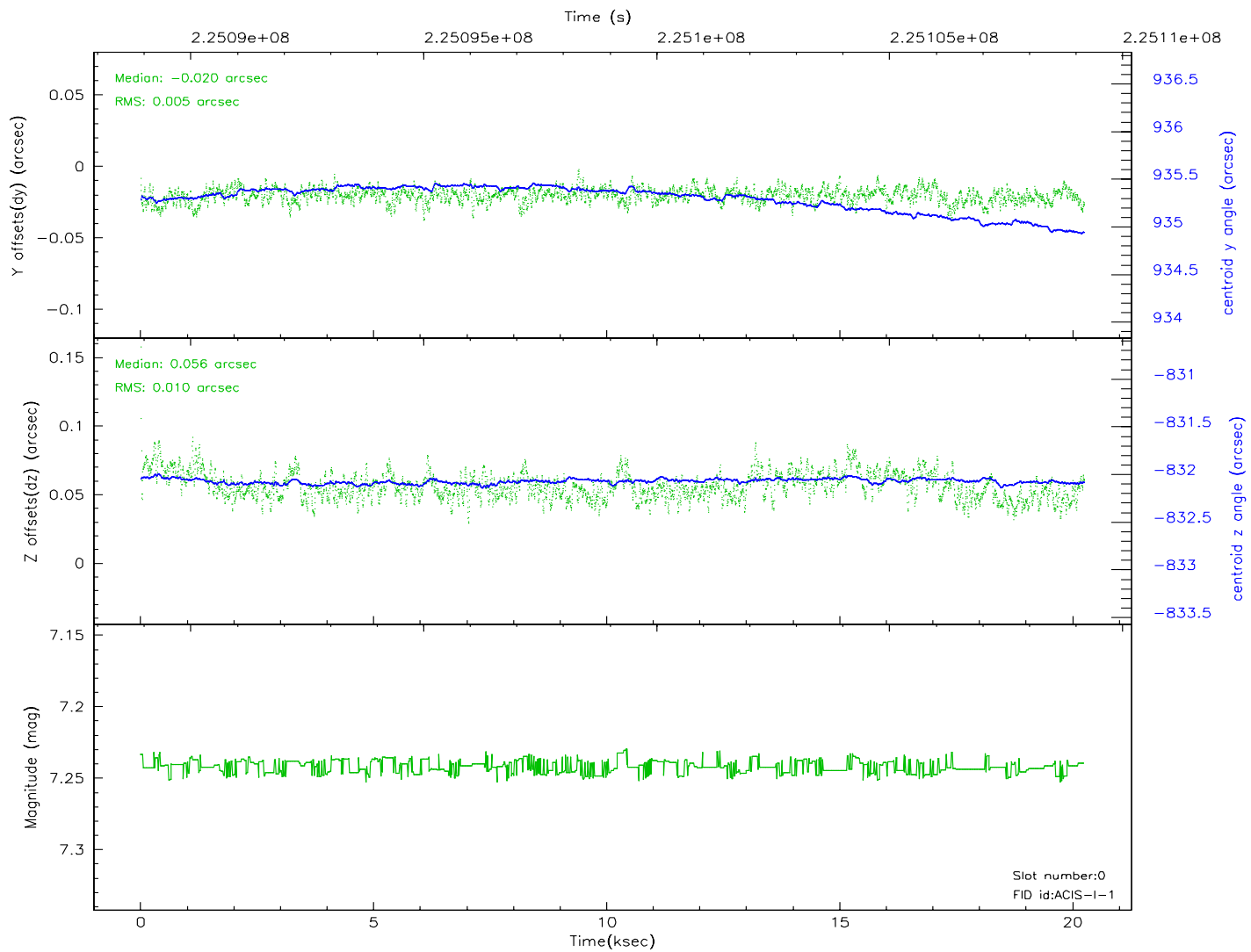
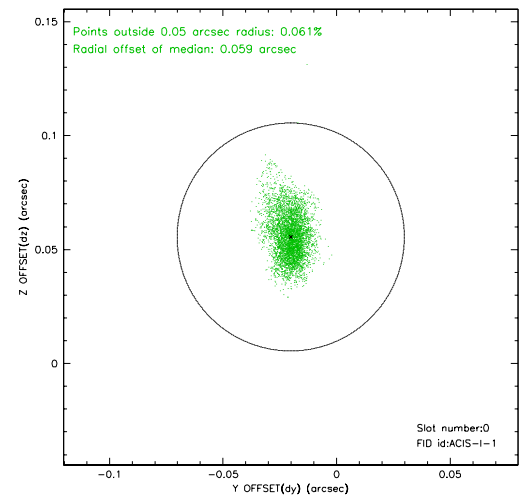
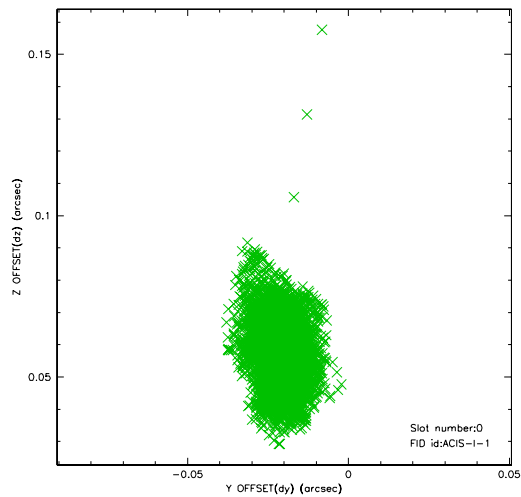


2.4.5 Slot 7

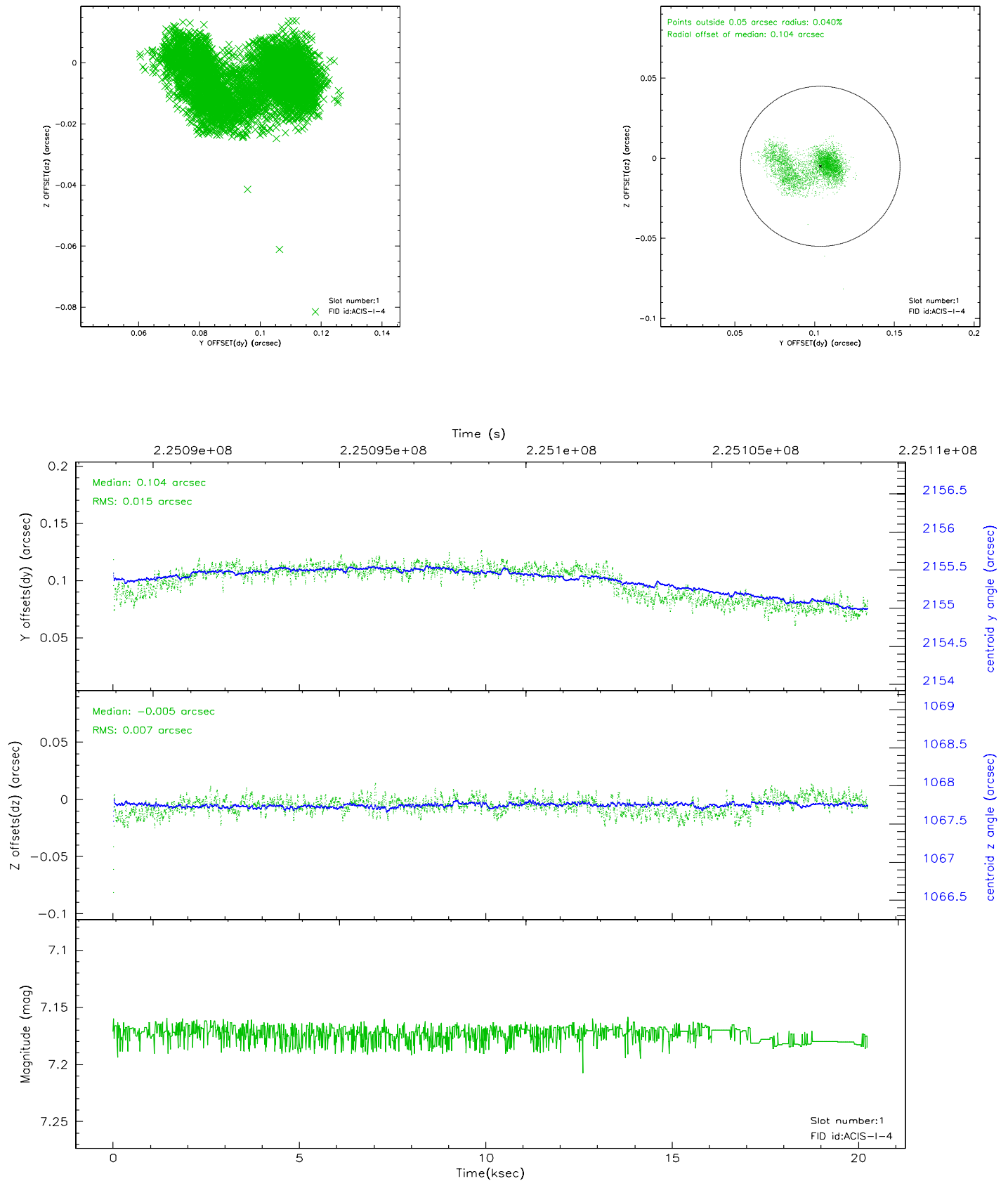


2.5 FID Slots

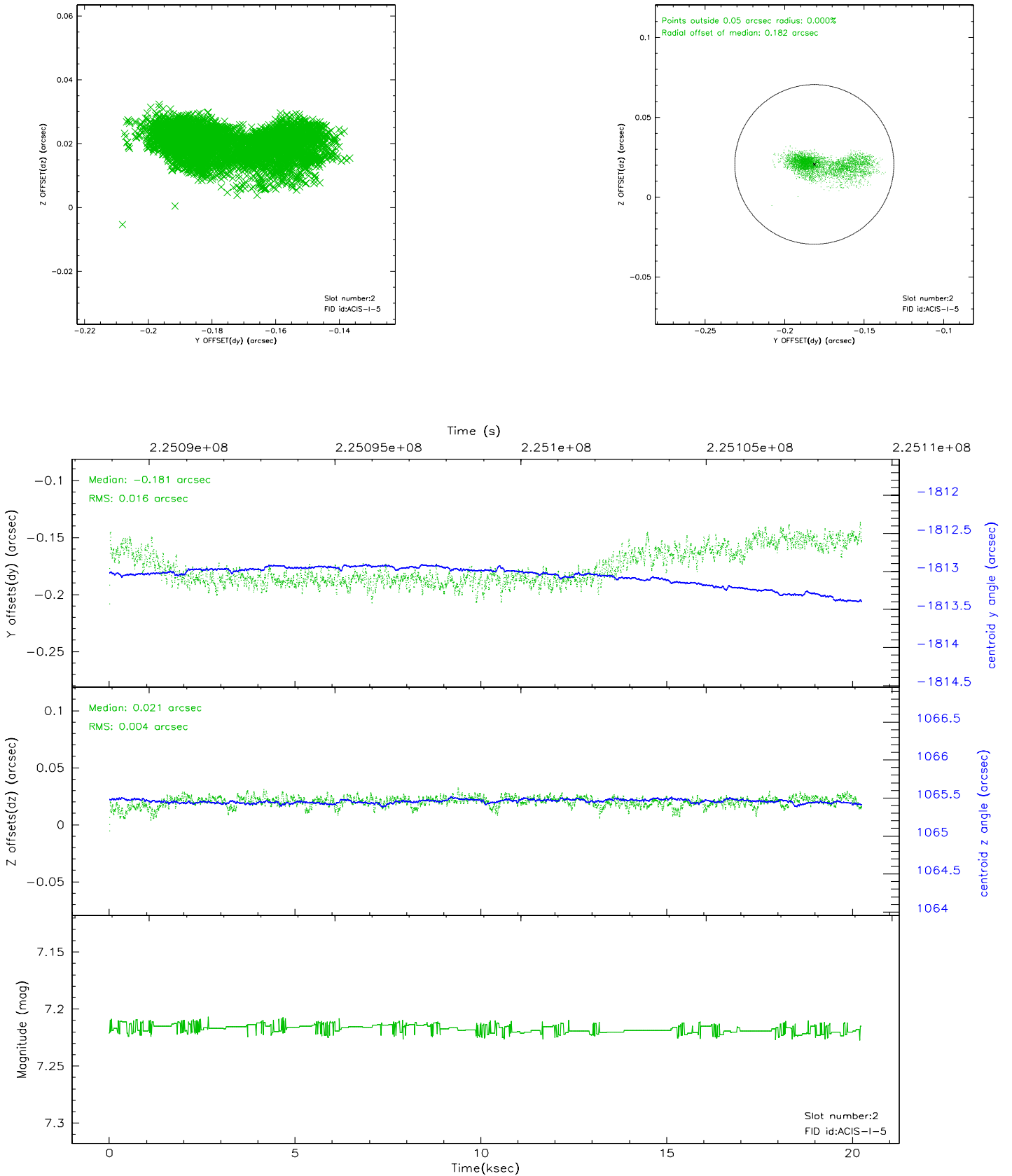
2.5.1 Slot 0



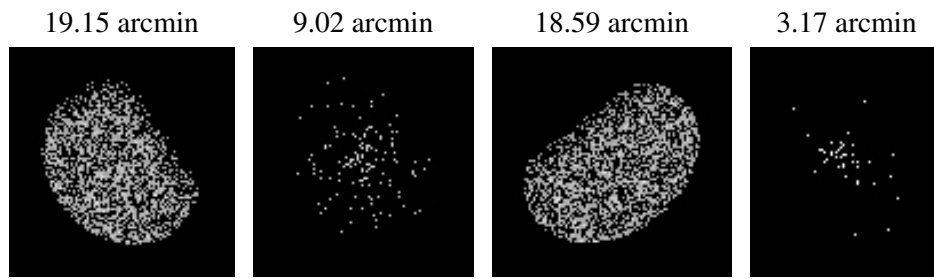
2.5.2 Slot 1



2.5.3 Slot 2



3 Point Sources



A Summary

A.1 Status

V&V Scientist	Beth Sundheim
V&V Date (YYYY-MM-DD)	2006.02.24
V&V Edition	1
V&V Disposition and Status	OK
V&V Charge Time	19.95839

A.2 Comments

Window and roll constraints satisfied.